



No Further Action Plan - Complete with Controls

RACER Coldwater Road Industrial Land
Genesee Township, Michigan

Revitalizing Auto Communities
Environmental Response Trust

Draft for Review

This document is in draft form. A final version of this document may differ from this draft. As such, the contents of this draft document shall not be relied upon. GHD disclaims any responsibility or liability arising from decisions made based on this draft document.





Table of Contents

- 1. Introduction..... 1
 - 1.1 Site Description and History 1
- 2. Summary of Previous Investigations..... 2
 - 2.1 Description of Current Conditions 2
 - 2.2 RCRA Facility Investigation 2
 - 2.2.1 Geologic Conditions 3
 - 2.2.2 Hydrogeological Conditions..... 3
 - 2.2.3 Distribution of Chemical Compounds in Soil 4
 - 2.2.4 Distribution of Chemical Compounds in Groundwater 4
 - 2.3 Background Evaluation 4
 - 2.4 Environmental Indicators 5
 - 2.4.1 Current Human Exposures Under Control - CA 725 5
 - 2.4.2 Migration of Contaminated Groundwater Under Control - CA 750..... 5
 - 2.5 Shallow on-Site Groundwater Quality Assessment 5
 - 2.6 Shallow Perched Groundwater Migration Assessment 5
 - 2.7 Deep Aquifer Impact Assessment 6
- 3. Interim Measures..... 6
- 4. Selected Corrective Measures 6
- 5. Remaining Corrective Measures Activities 7
- 6. Conclusions..... 7

Figure Index

- Figure 1.1 Site Location
- Figure 1.2 Former Site Plan
- Figure 3.1 Area Subject to Deed Restrictions
- Figure 3.2 Monitoring Well Locations

Table Index

- Table 2.1 Summary of Reports and Correspondence



Appendix Index

- Appendix A Environmental Indicators (CA 725 and CA 750)
- Appendix B Declaration of Restrictive Convent
- Appendix C Request for MDEQ Review of No Further Action (NFA) Report – Form and Supporting Documents



1. Introduction

This report was prepared as the No Further Action Report – Complete with Controls (NFA) for Revitalizing Auto Communities Environmental Response Trust (RACER's) Coldwater Road Industrial Land (Site) located at 1245E Coldwater Road in Genesee Township, near Flint, Michigan. The United States (U.S.) Environmental Protection Agency (EPA) Waste Identification Number for the Site is MIR000020743. This NFA Report summarizes previous environmental investigations and remedial activities performed at the Site for purposes of obtaining Michigan Department of Environmental Quality (MDEQ) approval and acknowledgment that No Further Action – Complete with Controls has been attained.

On June 1, 2009, General Motors Corporation (GMC) filed for Chapter 11 protection under the U.S. Bankruptcy Code. On July 10, 2009, GMC was renamed Motors Liquidation Company (MLC) and on the same day some of the operating assets of MLC were sold to a newly formed company "General Motors Company". General Motors Company changed its name to General Motors LLC (GM LLC) on October 16, 2009. Assets not sold to GM LLC remained the property of MLC, in its capacity as debtor in possession in the bankruptcy case. An Environmental Response Trust Consent Decree and Settlement Agreement (Settlement Agreement) was entered by the U.S. Bankruptcy Court for the Southern District of New York on March 29, 2011, in the case of *In re Motors Liquidation Company, et al., Debtors*, Case No. 09 50026 (REG), among the Debtors, the United States of America, certain states including the State of Michigan, the Saint Regis Mohawk Tribe, and EPLET, LLC, (not individually but solely in its representative capacity as Administrative Trustee of the Trust).

Pursuant to the terms of the Settlement Agreement, RACER Trust became effective on March 31, 2011, and interest in the 89 sites formerly owned by MLC, including this Site, were transferred to RACER at that time to conduct, manage, and fund cleanup. The Site was one of the properties transferred to RACER.

The Site completed voluntary Resource Conservation and Recovery Act (RCRA) Facility Investigation (RFI) activities in accordance with U.S. EPA guidance. It is noted that although U.S. EPA guidance was followed, the MDEQ is the lead agency. Interim Measures (IM) and RCRA Environmental Indicators (EI; CA725 and CA750) reporting were also completed for the Site. Since completion of the RFI in 2010, supplemental RFI investigations have been completed and submitted to the MDEQ.

The Site location is presented on Figure 1.1. A Site plan which identifies the Areas of Interest (AOIs) identified in the Description of Current Conditions (DOCC) as requiring additional investigation is presented on Figure 1.2. These AOIs were further evaluated in the RFI.

1.1 Site Description and History

The Site was a portion of a larger automotive components manufacturing facility previously owned and operated by GMC which, along with the Site, included a closed landfill and a waste water treatment facility located to the north of the Site. The Site is located on approximately 119 acres of land. Manufacturing of automotive interior components were historically conducted in the



approximately 2 million-square-foot (Building 44) and associated buildings formerly located at the Site.

GMC acquired the property as vacant land in 1951 from several private parties. The Buick Motor Division started construction of the plant buildings that same year. However, prior to completion, the Site was transferred to GMC's Ternstedt Division. The Fisher Body Division subsequently acquired and operated the Facility in 1968. In 1985, the Fisher Body hardware plants were merged with Guide Lamp and became the Fisher Guide Division. In early 1989, Fisher Guide Division was merged with Inland Division to become the Inland Fisher Guide Division. The Inland Fisher Guide Division became part of Delphi Automotive Systems in early 1995 and the Facility was operated as the Delphi Interior and Lighting Systems Division Coldwater Road Plant (Delphi) until GMC sold the Facility to Peregrine in December 1996. Peregrine ceased operations in 1998 and GMC's subsidiary REALM acquired the property in August 1999. From October 1999 to October 2000, the Administration Building was leased to GMC as a Transition Center/Jobs Bank. REALM completed environmental decommissioning and demolition of all above grade structures in June 2001.

2. Summary of Previous Investigations

Voluntary corrective actions have been undertaken at the Site and documented in the following submittals. A complete summary of report submittals and correspondence is provided in Table 2.1.

2.1 Description of Current Conditions

The DOCC Report was submitted to the MDEQ on March 31, 2000. The DOCC Report identified 21 Areas of Interest (AOIs) at the Site, based on the preliminary assessment/ visual Site inspection, and a review of historical information for the Site. Supplemental information to the DOCC Report regarding Underground Storage Tank (UST) closures at AOI 3 and AOI 15 were submitted to the MDEQ in correspondence dated September 25, 2000.

2.2 RCRA Facility Investigation

The RFI Work Plan was submitted to the MDEQ on May 16, 2000, which detailed the scope of work for further characterization of the 12 AOIs identified in the DOCC Report as requiring further investigation.

The first phase of RFI fieldwork was completed between May 2000 and August 2000. Results were submitted in the Draft RFI Report to the MDEQ on November 30, 2000. The MDEQ provided comments on the Draft RFI Report in their letter dated March 26, 2001.

The second phase of RFI investigation was conducted in the Building 44 basement pursuant to RFI Work Plan Addendum #1 in April and May 2001. Responses to the MDEQ's March 26, 2001 comments on the Draft RFI Report, results of the April and May 2001 investigation, and the RFI Work Plan Addendum #2, were provided in the Responses to Draft RFI Comments letter dated March 28, 2002.



The third phase of RFI investigation was conducted pursuant to RFI Work Plan Addendum #2. Additional groundwater sampling was conducted in October 2002 and results were submitted to MDEQ.

The investigative activities focused on 12 of the 21 AOIs identified as requiring further review in the DOCC Report. The RFI included supplemental soil sampling at AOI 3 (in the vicinity of the two former waste oil USTs which had been removed from outside the east wall of Building 44), supplemental soil sampling in the vicinity of BH-9-26-00, delineation sampling in the vicinity of BH-2-3-00, BH-9-23-00, BH-11-1-00, and K-35, and the collection of perched water samples from pre-existing monitoring wells. The supplemental rounds of investigation were completed between April 2001 and February 2003. The RFI also included perched water samples collected from MW-3, MW-4, MW-10, MW-13, and PFW-9 in June 2000. A second round of perched water samples were collected from MW-3, PFW-9, and PFW-10 in October 2002.

Additional delineation of soil samples was conducted in June 2002 and results were submitted to the MDEQ.

Follow-up groundwater investigation activities were completed between December 2010 and March 2018 including 4 years of quarterly monitoring (2011, 2014, 2015, and 2016), perimeter groundwater investigations, and preferential pathway evaluations to evaluate the stability and mobility of groundwater on Site.

2.2.1 Geologic Conditions

The bedrock of Genesee County is covered with glacial deposits. The Site is situated on a terminal or end moraine with a glacial cover of 150 to 200 feet.

The surficial deposits in the vicinity of the Facility consist of urban land and soils from the Conover-Brookston and Celina-Conover-Miami, based on information contained in the Soil Survey of Genesee County, Michigan prepared by the United States Department of Agriculture and the Soil Conservation Service. In general, these soil associations are characterized as level to gently sloping, somewhat poorly drained to well drained loams, that have a clay loam subsoil. In combination, the Conover-Brookston and Celina-Conover-Miami soil associations occupy 56 percent of the surficial soils throughout Genesee County.

The investigation results are consistent with regional geology which identified a thick (approximately 55 ft) clay till underlying 0 - 10 ft of saturated silty sand.

2.2.2 Hydrogeological Conditions

Both the glacial overburden and the bedrock in Genesee County have water bearing geologic units. The glacial overburden consists of mainly low permeability tills that are poor sources of groundwater, but some lenses of sand and gravel may provide adequate volumes of water for domestic use. The sandstone beds of the Saginaw and Marshall Formations are the best and most commonly used water bearing hydrogeologic units in Genesee County. This is because of the high yields that can be obtained and because bedrock wells in these formations are well protected by overlying clays and are easily maintained.



Rainfall and subsequent infiltration is the primary source of recharge for the water bearing units in the glacial overburden. These water bearing units are generally hydraulically connected to the surface waters in Genesee County. However, no surface water features are present at or in the vicinity of the Site.

The glacial drift water bearing units may also be locally connected hydraulically to the bedrock water bearing zones. Rainfall is the main source of recharge and the upland areas in the southern part of the County act as a regional recharge source. The flow direction in the bedrock conforms to a regional pattern and generally moves from recharge areas toward the Flint River (located north of the Site), which acts as a general point of groundwater discharge.

The types of material in Genesee County, and their formation are relevant to the potential for aquifer contamination. According to the Hydrogeologic Atlas of Michigan map "Aquifer Vulnerability to Surface Soil Contamination in Michigan", dated 1982, the majority of Genesee County contains moderately or slowly permeable soils over low sensitivity drift material. The Hydrogeologic Atlas of Michigan map "Quaternary Geology of Southern Michigan (upper 1 - 10 meters)", dated 1982, identifies that these low permeability soils are predominantly comprised of medium textured tills from end moraines or till plains, lacustrine clays, and lacustrine silts. As a result, groundwater in glacial overburden is generally of limited extent and usability.

The investigation results are consistent with regional geology which identified a drift aquifer underlying the thick (approximately 55 ft) clay till with perched/discontinuous water-bearing zones present in the shallow (0 - 10 ft) surficial silty sand.

2.2.3 Distribution of Chemical Compounds in Soil

The presence of various chemicals were detected in the shallow silty sands across the Site. As part of IMs complete at the Site, all soil exceeding Industrial Direct Contact Criteria, Particulate Soil Inhalation Criteria, and Soil Volatilization to Indoor Air Inhalation Criteria was excavated and disposed of off Site. In addition, there were no exceedances of Infinite Source Soil inhalation Criteria.

2.2.4 Distribution of Chemical Compounds in Groundwater

Groundwater contamination at the Site is generally not a widespread issue. With the exception of total and/or dissolved metals (arsenic, barium, iron, lead and manganese) within the shallow perched groundwater exceeding residential/non-residential drinking water criteria, which are contained on Site.

There is no evidence of impacts to deep groundwater at the Site.

2.3 Background Evaluation

Site-specific background values have been developed for the Site and used to evaluate constituent concentrations on Site relative to local soil and groundwater conditions. Soil background concentrations were developed in 2000. Background groundwater concentrations were developed for both the shallow and deep groundwater resources at the site for comparison with Site analytical results in 2013.



2.4 Environmental Indicators

2.4.1 Current Human Exposures Under Control - CA 725

In order to assess risks at the Site, characterization data for soil and groundwater was screened against MDEQ generic risk-based screening criteria. The data used to characterize current conditions (i.e., soil that remains at the Site and has not been excavated) support a determination that all current human exposures to contamination at the Site are under control.

Current Human Exposures Under Control was verified by the MDEQ on March 21, 2014. The completed CA725 documentation is provided in Appendix A.

2.4.2 Migration of Contaminated Groundwater Under Control - CA 750

Shallow groundwater at the Site has been monitored as part of a routine monitoring program. The results indicate that shallow groundwater is stable and not migrating. The results also indicate that the deep groundwater at the Site has not been impacted by former Site operations. Therefore, it has been determined that the migration of contaminated groundwater at the Site is under control.

Mitigation of Contaminated Groundwater Under Control was verified by the MDEQ on April 23, 2015. The completed CA750 documentation is provided in Appendix A.

2.5 Shallow on-Site Groundwater Quality Assessment

From 1996 to 2018, on-Site groundwater quality has been investigated and evaluated for the presences of metals, cyanide, volatile organic compounds (VOCs), semi-VOCs, polychlorinated biphenyls (PCBs), and per- and polyfluoroalkyl Substances (PFAS). Results have been screened to residential and non-residential MDEQ drinking water and volatilization to indoor air inhalation criteria.

All shallow groundwater exceedances of screening criteria reported on Site since the completion of interim measures (IMs) (see Section 2.3 of this report) are below screening criteria and/or Site-specific background groundwater values. In addition, groundwater is contained within the Site as presented in the Groundwater Quality Analysis Report (Feb, 2013).

The results and conclusions have been documented in correspondence with the MDEQ as presented in Table 2.1.

2.6 Shallow Perched Groundwater Migration Assessment

Off-Site migration of shallow groundwater from the Site has been evaluated. A borehole investigation around the perimeter of the Site was completed in December 2011 to determine the presence/absence of shallow groundwater at the perimeter of the Site. In general, no shallow groundwater was found at the perimeter of the Site with the exception of utility corridors and the MW-17-13 area. Additional groundwater quality investigations completed at utility corridor crossing locations and monitoring well MW-17-13 determined that no off-Site migration of impacted groundwater is occurring.

The results and conclusions have been documented in correspondence with the MDEQ as presented in Table 2.1.



2.7 Deep Aquifer Impact Assessment

Deep groundwater quality has been evaluated at the Site through comparison to shallow on-Site groundwater and background groundwater in the vicinity of the Site. Based on the comparison, there is no evidence that deep groundwater at the Site has been impacted by former Site Operations.

The results and conclusions have been documented in correspondence with the MDEQ as presented in Table 2.1.

3. Interim Measures

In response to RFI soil results, IM activities were conducted at the Facility between June 2001 and April 2009. The following IM activities are described in detail in the IM Report (CRA, 2010):

- Approximately 90 cubic yards of soil were excavated from an area approximately 21 feet by 19 feet by 6 feet deep, in the Building 44 basement, in June 2001. This soil was excavated due to exceedances of Industrial Direct Contact Criteria (IDCC) and Particulate Soil Inhalation Criteria (PSIC) at BH-9-26-00.
- Coal fines were removed from the former powerhouse area in June 2002.
- Based on soil delineation sampling completed in 2002, soil was excavated at sample locations K-35, BH-2-3-00, BH-9-23-00, and BH-11-1-00 due to exceedances of IDCC, PSIC, and/or Soil Volatilization to Indoor Air Inhalation Criteria (SVIAC). Approximately 30 cubic yards of soil were removed from each of the K-35, BH-2-3-00, and BH-9-23-00 locations, and approximately 60 cubic yards of soil were removed from the BH-11-1-00 location. Impacted concrete and soil from the Building 44 slab, and soil from the former Drum Storage Area, were also excavated. The excavation was conducted in March and April 2004. The excavations were backfilled with clean soil. Site restoration was completed in September 2004.
- A small release of oily water was discovered on the building slab and cleaned up in April 2009. Asphalt and a broken pipe were disrupted by a snow plow, and oily water was found on the ground. The broken asphalt was placed into drums along with other solids (PPE, plastic, absorbent booms). The water was containerized in a tanker truck. The water and solids were characterized as non-hazardous. The pipe was cut below grade and grouted with cement mix. An August 2, 2010 Site inspection confirmed that no additional oil-stained areas were observed.

4. Selected Corrective Measures

Corrective Measures were developed with the MDEQ in parallel with the RFI submittals discussed in Section 2.2. After developing and evaluating corrective measures alternatives based on the information obtained from the RFI activities, the final corrective measures for the Site including the following:

- Previously Completed Targeted Excavations: Removal of soils were completed in AOI 2 (Former Waste Pile Pad - located east of former Building 44 and approximately 100 feet north-northeast of Building 63), AOI 9 (Former Plating Area - three separate areas in former Building 44), and



AOI 11 (Former Coal Storage Area - located to the north of the powerhouse, former Building 45) as interim measures between 2001 and 2004 to address concentrations of constituents of concern (COCs) that represented a direct contact risk.

- Previously Completed Groundwater Investigation/Monitoring: various investigations to confirm plume stability and containment on Site to support EIs and other corrective measures components.
- Land Use Restrictions: Use of the entire Site was limited to nonresidential, with Site-wide soil management, Site-wide soil vapor management, and Site-wide subgrade utility restrictions. Figure 3.1 presents the Site land use restrictions and Appendix B presents the executed restrictive covenant.
- Groundwater Use Restrictions: Use of groundwater for the entire Site was prohibited for consumption, irrigation or any other purpose, with the exception of evaluating groundwater, remediation of subsurface contamination or short-term dewatering for construction purposes and Appendix B presents the executed restrictive covenant.
- Monitoring wells will remain on-Site, as needed, to support groundwater investigation activities being undertaken at the adjacent RACER Coldwater Road Landfill. Therefore, abandonment and/or annual inspection of all on-Site monitoring wells will be completed. Figure 3.2 presents the location of existing on-Site monitoring wells.

5. Remaining Corrective Measures Activities

Based on the Corrective Measures selected, the remaining activities at the Site include:

- Maintenance of the institutional controls in the Declaration of Restrictive Covenant **TO BE PROVIDED BY RACER** - Appendix B
- Monitoring wells will remain on-Site, as needed, to support groundwater investigation activities being undertaken at the adjacent RACER Coldwater Road Landfill. Therefore, monitoring well inspections will be completed annually for signs of damage or wear and tear such as rusted or broken locks or bent well casings. Signs of an inadequate seal, such as a cracked or mounded concrete pad, a missing well cap, or a loose cover will also be noted. Additionally, total depths are collected to check for signs of silting or erosion of the well screen. Any unusual conditions are noted in the field notebook. An effort is made to repair or replace any damaged item. If there is evidence of tampering or damage which could impair sample integrity, the well will not be sampled. Monitoring wells must be inspected and replaced if any damage occurs which makes them unusable. Alternatively, monitoring wells may be abandoned with MDEQ permission.

6. Conclusions

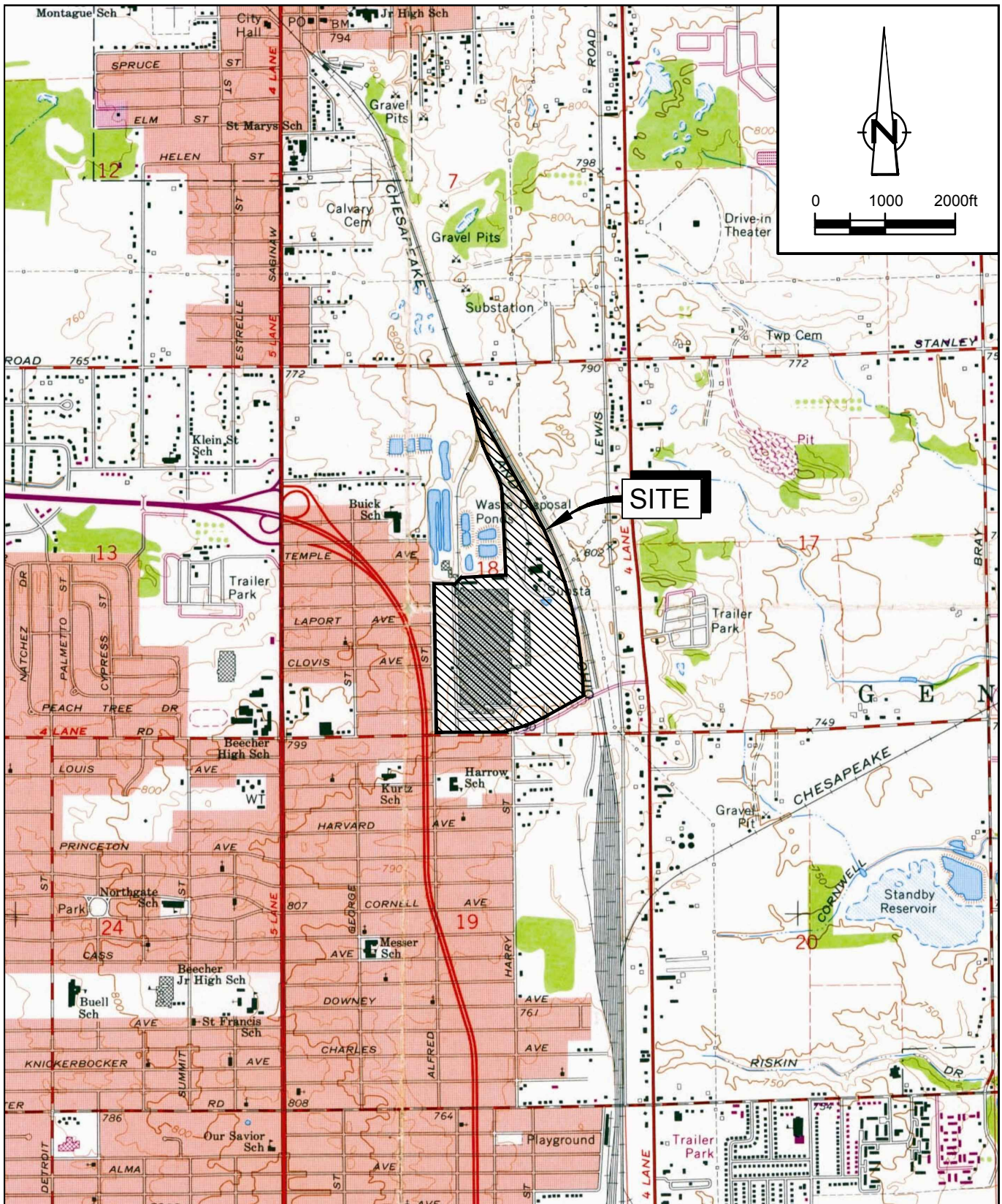
Implementation of the Corrective Measures for the Site is complete.

Based on the information provided in the report, RACER is requesting a No Further Action – Complete with Controls Determination from the MDEQ for the RACER Coldwater Road Industrial



Lands site located in Genesee Township, Michigan, USEPA Waste Identification Number MIR000020743.

The request for MDEQ review of NFA Report Form and supporting documents are provided in Appendix C.



SOURCE: USGS QUADRANGLE MAP;
FLINT NORTH, MICHIGAN

figure 1.1

SITE LOCATION
RACER COLDWATER ROAD INDUSTRIAL LAND
Genesee Township, Michigan



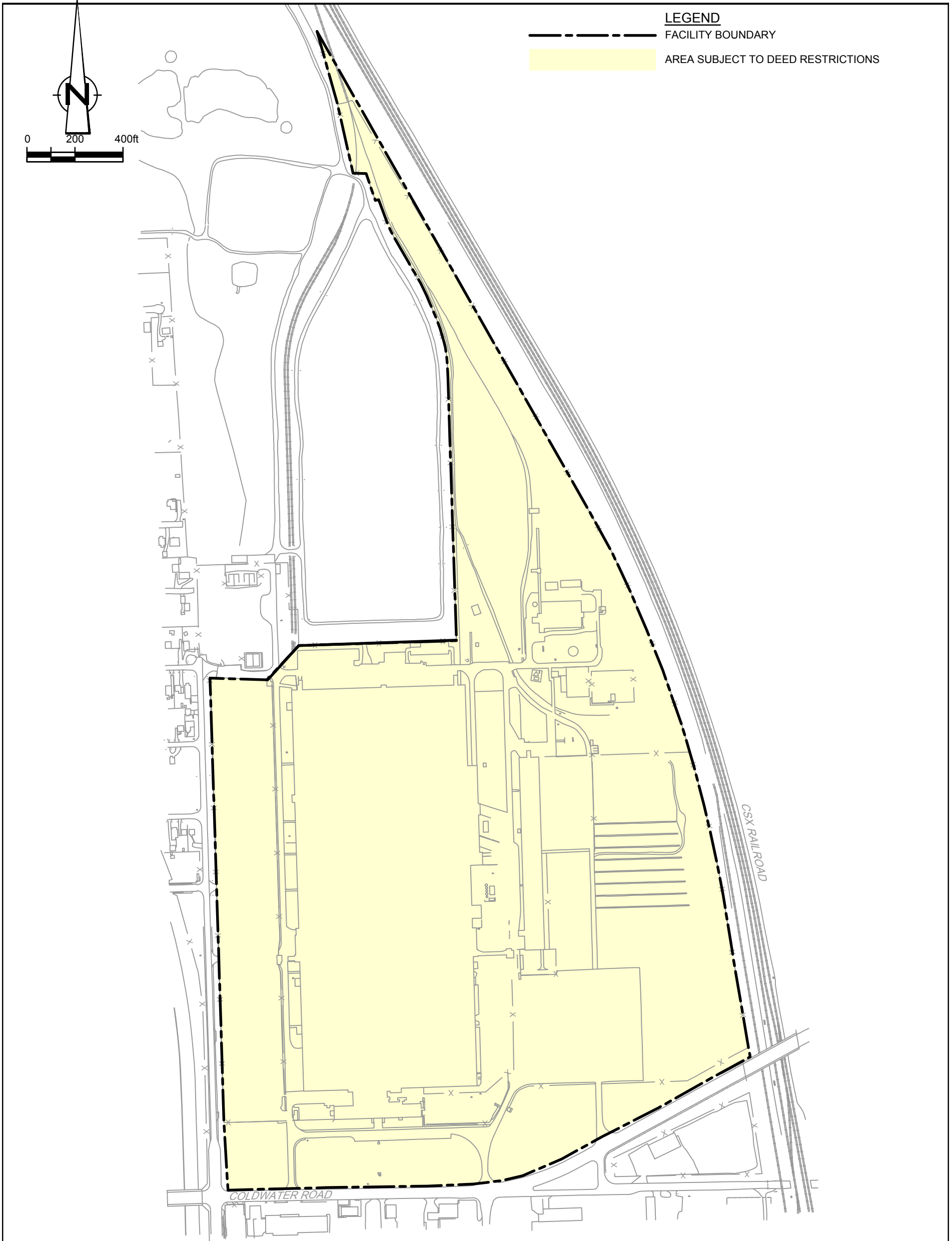


figure 3.1

**AREA SUBJECT TO DEED RESTRICTIONS
RACER COLDWATER ROAD INDUSTRIAL LAND
*Genesee Township, Michigan***



NOTE:
THIS DRAWING IS FOR REFERENCE ONLY AND IS NEITHER
COMPLETE NOR TO EXACTING SCALE.



LEGEND

- FACILITY BOUNDARY
- SHALLOW MONITORING WELL LOCATION (ANNUAL)
- DEEP MONITORING WELL LOCATION (ANNUAL)



NOTE:
THIS DRAWING IS FOR REFERENCE ONLY AND IS NEITHER
COMPLETE NOR TO EXACTING SCALE.

figure 3.2

**MONITORING WELL LOCATIONS
RACER COLDWATER ROAD INDUSTRIAL LAND
Genesee Township, Michigan**

Table 1

**Summary of Reports and Correspondence
Coldwater Road Industrial Lands
Genesee Township, Michigan**

Date	Document Title	Document Type	Author/ Consultant
09/30/1998	Preliminary Assessment/Visual Site Inspection Report	Memo	Techlaw
03/01/2000	Description of Current Conditions Report	Report	GHD
05/16/2000	RCRA Facility Investigation (RFI) Work Plan, Revision 0	Report	GHD
03/28/2002	Responses to Comments Draft RCRA Facility Investigation RFI Report (Vol I of II)	Letter	GHD/REALM
03/28/2002	Responses to Comments Draft RCRA Facility Investigation RFI Report (Vol II of II)	Letter	GHD/REALM
08/20/2010	RCRA Facility Investigation Report	Report	GHD
08/20/2010	Interim Measures Completion Report	Report	GHD
08/20/2010	RCRA Environmental Indicators (CA725 and CA750) Supporting Documentation	Report	GHD
08/20/2010	Building Decommissioning and Demolition Report	Report	GHD
09/07/2010	Proposed Drift Aquifer Monitoring Well Installation and Groundwater Monitoring Event	Letter	GHD
02/14/2011	Monitoring Well Installation and Groundwater Monitoring Report	Letter	GHD
03/29/2011	Comments on Monitoring Well Installation and Groundwater Monitoring Report	Letter	MDEQ
05/09/2011	Revised Monitoring Well Installation and Groundwater Monitoring Report	Letter	GHD
06/10/2011	Concerns Regarding Response to MDEQ March 29, 2011 Comments	Letter	MDEQ
07/27/2011	Reponse to MDEQ Comments Dated June 10, 2011	Letter	GHD
09/12/2011	Groundwater Monitoring Report and Revised Facility-Specific Background Study	Letter	GHD
09/28/2011	Response to CRA July 27, 2011 Letter	Letter	DEQ
11/11/2011	Reponse to MDEQ Comments Dated September 26, 2011	Letter	GHD
01/04/2012	Groundwater Monitoring Report September 2011 and Revised Facility-Specific Background Development	Letter	GHD
03/14/2012	Groundwater Monitoring Report December 2011 and Revised Facility-Specific Background Development	Letter	GHD
06/27/2012	Final Background Groundwater Sampling and Additional Utility Corridor Investigation Report, March 2012	Letter	GHD
01/18/2013	Calculated Site Specific Background Values for Inorganics in Groundwater - Revised	Memo	GHD
02/01/2013	Groundwater Quality Analysis	Letter	GHD
02/20/2013	Approval of Calculated Site-specific Background Values	Letter	MDEQ
04/23/2013	Comments on Groundwater Quality Analysis Report	Letter	MDEQ
05/27/2013	Response to MDEQ Comment dated April 23 2013 - Groundwater Quality Analysis	Letter	GHD
06/11/2013	Peregrine Meeting Summary - June_11_2013 Final	Email	GHD/MDEQ
09/16/2013	Supplemental RFI Groundwater Investigation Work Plan and Groundwater Monitoring Plan	Letter	GHD

Table 1

**Summary of Reports and Correspondence
Coldwater Road Industrial Lands
Genesee Township, Michigan**

Date	Document Title	Document Type	Author/ Consultant
06/23/2014	Supplemental RFI Groundwater Monitoring Annual Report (October 15, 2013 to March 31, 2014)	Letter	GHD
07/28/2014	Comments on Supplemental Groundwater Monitoring Annual Monitoring Report (October 15, 2013 to March 31, 2014)	Letter	MDEQ
08/14/2014	Response to Comments on 2013 Annual Monitoring Report	Letter	GHD
06/23/2015	Supplemental RFI Groundwater Monitoring Annual Report (March 31, 2014 to April 30, 2015)	Letter	GHD
06/30/2015	Comments on Supplemental RFI Groundwater Monitoring Annual Report (March 31, 2014 to April 30, 2015)	Letter	MDEQ
07/27/2015	Response to Comments of June 30, 2015	Letter	GHD
06/09/2016	Supplemental RFI Groundwater Monitoring Annual Report (April 30, 2015 to March 31, 2016)	Letter	GHD
07/13/2016	Comments on Supplemental RFI Groundwater Monitoring Annual Report (April 30, 2015 to March 31, 2016)	Letter	MDEQ
08/18/2016	MW17-13 Area Investigation Work Plan	Memo	GHD
08/19/2016	Response to Comments of July 13, 2016	Letter	GHD
10/07/2016	PFOS/PFAS Sampling at RACER Former Peregrine, Inc., Coldwater Road Facility and Coldwater Road Landfill	Letter	GHD
01/19/2017	MW-17-13 Area Investigation Results	Letter	GHD
02/13/2017	November 2016 PFAS Sampling Results Summary	Letter	GHD
07/18/2017	Supplemental RFI Groundwater Monitoring Annual Report (March 31, 2016 to March 31, 2017)	Letter	GHD
09/18/2017	Deep Dissolved Aluminum Detections in Groundwater	Email	GHD
10/03/2017	Comment on Supplemental RFI Groundwater Monitoring Annual Monitoring Report	Letter	MDEQ
10/27/2017	Response to Comments on Supplemental RFI Groundwater Monitoring Annual Report (March 31, 2016 to March 31, 2017)	Letter	GHD
05/04/2018	Supplemental RFI Groundwater Sampling Deep Groundwater Aluminum Sampling	Letter	GHD
06/08/2018	Shallow Monitoring Well Abandonment	Email	GHD
09/17/2018	Acceptance of Supplemental RFI Groundwater Monitoring, Deep Groundwater Aluminum Sampling Report	Letter	GHD

Notes

GHD Refers to all GHD and former Conestoga-Rovers and Associates (CRA) Reports
MDEQ Michigan Department of Environmental Quality

Appendices

Appendix A

Environmental Indicators (CA 725 and CA 750)

2020 Corrective Action Baseline: 3,779 facilities sorted by Location (EPA Region, State, City)

Last Updated September 30, 2017.

For additional information on Corrective Action Facilities, please visit our Cleanups in My Community page at:

<https://www.epa.gov/cleanups/cleanups-my-community>

Region	EPAID	Handler Name	Address	City	State	Zip Code	CA725	CA750	CA550	CA900	Federal Facility
1	CTD001165224	BRONSON HOMER D CO	MAIN ST	BEACON FALLS	CT	6403					
1	CTD001168137	IDEAL PRODUCTS LLC	158 PINESBRIDGE ROAD	BEACON FALLS	CT	6403	YE	YE	YE		
1	CTD052541695	CORBIN RUSSWIN INC	225 EPISCOPAL RD	BERLIN	CT	6037	YE	YE			
1	CTD001181205	VANDERBILT CHEMICALS LLC	31 TAYLOR AVE	BETHEL	CT	6801	YE	YE	YE		
1	CTD001449602	SANDVIK WIRE AND HEATING TECH	119 WOOSTER ST	BETHEL	CT	6801	YE	YE	YE		
1	CTD001144062	BIRKEN MANUFACTURING COMPANY	3 OLD WINDSOR ROAD	BLOOMFIELD	CT	06002-1397	YE	YE			
1	CTD001145671	BASS PLATING CO	82 OLD WINDSOR RD	BLOOMFIELD	CT	6002	YE	YE			
1	CTD001155225	KAMAN AEROSPACE CORP	50 OLD WINDSOR RD	BLOOMFIELD	CT	6002	YE	YE	YE		
1	CTD980667927	SAFETY KLEEN SYSTEMS INC	11 TIPPING DR LOT 4	BRANFORD	CT	6405	YE	YE	YE		
1	CTD000638627	BRIDGEPORT HARBOR STATION	1 ATLANTIC ST	BRIDGEPORT	CT	6604	YE	YE			
1	CTD000651927	SEASIDE PARK LANDFILL	SEASIDE PARK BARNUM BLVD	BRIDGEPORT	CT	6604	YE	YE			
1	CTD001174580	SPECIFICATIONS PLATING INC	740 SEAVIEW AVE	BRIDGEPORT	CT	6607		YE			
1	CTD001180587	O & G INDUSTRIES INC	325 HANCOCK AVE	BRIDGEPORT	CT	6605	YE	YE	YE		
1	CTD001183078	WESTINGHOUSE ELECTRIC CORP	1421 STATE STREET	BRIDGEPORT	CT	06605-2032	YE	YE	YE		
1	CTD001449735	SIKORSKY AIRCRAFT CORP	1210 SOUTH AVE	BRIDGEPORT	CT	6604	YE	YE	YE		
1	CTD001453216	SPORTING GOODS PROPERTIES INC	615 ASYLUM ST	BRIDGEPORT	CT	6610	YE	YE			
1	CTD001453711	GENERAL ELECTRIC CO	1285 BOSTON AVE	BRIDGEPORT	CT	6610	YE	YE			
1	CTD000604488	CLEAN HARBORS ENVIRONMENTAL SERVICES INC	51 BRODERICK RD	BRISTOL	CT	6010	YE	YE			
1	CTD000790725	BRISTOL SANITARY LANDFILL	685 LAKE AVE	BRISTOL	CT	6010	YE				
1	CTD001145267	SUPERIOR ELECTRIC HOLDING GROUP LLC	383 MIDDLE ST	BRISTOL	CT	6010	YE	YE			
1	CTD001145317	CERRO FABRICATED PRODUCTS	201 PINE ST	BRISTOL	CT	6010	YE	YE	YE		
1	CTD001153253	FLETCHER REALTY	76 RONZO RD	BRISTOL	CT	6010	YE	YE	YE		
1	CTD001701168	ACME RIVET & MACHINE CORP	400 MIDDLE ST	BRISTOL	CT	6010	YE	YE	YE		
1	CTD018625632	GENERAL MOTORS CORP DELCO CHASSIS DIV	780 JAMES P CASEY RD	BRISTOL	CT	6010	YE	YE			
1	CTD042308270	MCGRAW EDISON CO BUSSMANN DIV	210 REDSTONE HILL RD	BRISTOL	CT	6010	YE	YE	YE		
1	CTD980515290	SOUTHDOWN INC	0 CROSS ST	BRISTOL	CT	6010	YE	YE	YE	YE	
1	CTD001451855	TUCK A J CO	32 TUCK RD	BROOKFIELD	CT	6804	YE	YE	YE		
1	CTD001164334	VIRGINIA INDUSTRIES INC	30 KNOTTER DR	CHESHIRE	CT	6410	YE	YE	YE	YE	
1	CTD001167493	BALL & SOCKET MFG CO INC	493 W MAIN ST	CHESHIRE	CT	6410	YE	YE			
1	CTD001179316	BOVANO INDUSTRIES INC	830 S MAIN ST	CHESHIRE	CT	6410	YE	YE	YE	YE	
1	CTD054476973	MICROTECH INC	1425 HIGHLAND AVE	CHESHIRE	CT	6410	YE	YE	YE		
1	CTD980916779	ARCH CHEMICALS, INC.	350 KNOTTER DRIVE	CHESHIRE	CT	6410	YE	YE	YE	YE	
1	CTD080848666	BATES SUSAN INC	212 MIDDLESEX AVE RTE 9A	CHESTER	CT	6412	YE	YE	YE		
1	CTD004531042	AEROSPACE TECHNIQUES INC	5 PASCO HILL RD	CROMWELL	CT	6416	YE	YE	YE		
1	CTD000791095	MANKIND CORP	1 CASPER ST	DANBURY	CT	6810	YE	YE	YE		
1	CTD000841163	DANBURY LANDFILL	PLUMTREES RD	DANBURY	CT	6810	YE	YE	YE		
1	CTD001168558	RISDON AMS CORP	15 OLD NEWTOWN ROAD	DANBURY	CT	6810	YE	YE	YE		
1	CTD001184324	TOPPAN PHOTOMASKS INC	4 FINANCE DRIVE	DANBURY	CT	6810	YE	YE	YE	YE	
1	CTD001265636	MEDALLIC ART	OLD RIDGEBURY RD	DANBURY	CT	6810	YE	YE			
1	CTD050628148	COLUMBIA MAGNETICS	15 GREAT PASTURE RD	DANBURY	CT	6810	YE	YE	YE	YE	
1	CTD053707741	TEKNICIRCUITS INC	84 SHELTER ROCK RD	DANBURY	CT	6810	YE	YE	YE		
1	CTD064834914	ELECTROFORMERS INC GAR ELECTROFORMING DIV	11 AUGUSTA DR	DANBURY	CT	6810	YE	YE			
1	CTD075397992	ELECTRONICS METAL FINISHING CORP	88 TAYLOR ST	DANBURY	CT	6810	YE	YE	YE		
1	CTD001140862	SPIROL INTERNATIONAL CORP	30 ROCK AVE	DANIELSON	CT	6239	YE	YE			
1	CTD046238630	HUTCHINSON PRECISION SEALING SYSTEMS	39 WAUREGAN RD	DANIELSON	CT	6239	YE	YE	YE		
1	CTD001140920	PRYM WILLIAM INC	400 HARTFORD PIKE	DAYVILLE	CT	6241	YE	YE			
1	CTD000844399	PRATT & WHITNEY	100 COLT ST	EAST HARTFORD	CT	6118	YE	YE			
1	CTD000845131	PRATT & WHITNEY ANDREW WILLGOOS TURBINE LAB	PENT RD	EAST HARTFORD	CT	6118	YE	YE			
1	CTD990672081	PRATT & WHITNEY	400 MAIN ST	EAST HARTFORD	CT	6118	YE				
1	CTD001181148	EXIDE GROUP INC	2190 POST RD	FAIRFIELD	CT	6430	YE	YE	YE		
1	CTD018656819	HANDY & HARMAN	1770 KINGS HIGHWAY	FAIRFIELD	CT	6430	YE	YE			
1	CTD059831479	NEW ENGLAND AIRFOIL PRODUCTS INC	36 SPRING LN	FARMINGTON	CT	6032	YE	YE	YE		

Region	EPAID	Handler Name	Address	City	State	Zip Code	CA725	CA750	CA550	CA900	Federal Facility
5	MID981200835	SYSTECH ENVIRONMENTAL CORP	1480 FORD AVE	ALPENA	MI	49707	YE	YE	YE	YE	
5	MID005356688	REVITALIZING AUTO COMMUNITIES ENVIRONMENTAL RESPONSE	1001 WOODSIDE AVE	BAY CITY	MI	48708	YE	YE	YE	YE	
5	MID005359286	DORE INDUSTRIAL INC	501 MORTON ST	BAY CITY	MI	48706	YE	YE	YE		
5	MID005380258	THE DOW CHEMICAL COMPANY	4868 WILDER RD	BAY CITY	MI	48706	YE	YE			
5	MID006017966	ANCHOR LAMINA AMERICA INC	3650 S DERENZY RD	BELLAIRE	MI	49615	YE	YE	YE		
5	MID000724831	MICHIGAN DISPOSAL INC	49350 NORTH I94 SERVICE DRIVE	BELLEVILLE	MI	48111	YE	YE	YE		
5	MID048090633	WAYNE DISPOSAL INC	49350 N I94 SERVICE DR	BELLEVILLE	MI	48111	YE	YE			
5	MIR000001834	UNIVERSITY OF MICHIGAN	8501 BECK RD	BELLEVILLE	MI	48111	YE	YE	YE	YE	
5	MID096963194	PERMA FIX OF MICHIGAN INC	18550 ALLEN RD	BROWNSTOWN TOWNSHIP	MI	48193	YE	YE	YE	YE	
5	MID000810408	WASTE MANAGEMENT OF MICHIGAN INC	4620 HANNAN RD	CANTON	MI	48188	YE	YE	YE		
5	MID087738431	AK STEEL CORPORATION	4001 MILLER RD	DEARBORN	MI	48120	YE	YE			
5	MID005356803	DETROIT DIESEL CORPORATION	13400 W OUTER DR	DETROIT	MI	48239	YE	YE	YE		
5	MID074259565	US ECOLOGY MICHIGAN INC	6520 GEORGIA ST	DETROIT	MI	48211	YE	YE	YE	YE	
5	MID088754668	EDWARDS OIL SERVICE INC	530 S ROUGE ST	DETROIT	MI	48217	YE	YE			
5	MID091605972	TREX PROPERTIES LLC	12886 EATON AVE	DETROIT	MI	48227		YE			
5	MID094549425	EDWARD C LEVY CO	13950 MELLON RD	DETROIT	MI	48217	YE	YE			
5	MID094553419	ST MARYS CEMENT	9333 DEARBORN ST	DETROIT	MI	48209	YE	YE	YE	YE	
5	MID098011992	LE PETOMANE VII CUSTODIAL TRUST	12381 SCHAEFER HWY	DETROIT	MI	48227					
5	MID099114704	HONEYWELL INTERNATIONAL INC	7819 W JEFFERSON AVE	DETROIT	MI	48209	YE				
5	MID980615298	PETRO-CHEM PROCESSING GROUP OF NORTRU LLC	421 LYCASTE ST	DETROIT	MI	48214	YE	YE		YE	
5	MID980991566	US ECOLOGY	1923 FREDERICK ST	DETROIT	MI	48211	YE	YE	YE	YE	
5	MID990760100	OLD CARCO LLC	2880 ZEEB RD	DEXTER	MI	48130	YE	YE	YE		
5	MID005068507	PRAIRIE RONDE REALTY COMPANY	415 E PRAIRIE RONDE ST	DOWAGIAC	MI	49047	YE	YE	YE		
5	MID005038500	LAFARGE HOLCIM (DUNDEE, MICHIGAN FACILITY)	15215 DAY RD	DUNDEE	MI	48131					
5	MID000809665	EDWARD C LEVY CO	100 E WESTFIELD ST	ECORSE	MI	48229	YE	YE			
5	MID005338371	MACDERMID INC	1221 FARROW ST	FERNDALE	MI	48220					
5	MID005338801	GAGE PRODUCTS CO	625 WANDA ST	FERNDALE	MI	48220	YE				
5	MID020087128	REICHOLD INC	601 WOODWARD HTS BLVD	FERNDALE	MI	48220	YE	YE	YE	YE	
5	MID005356647	DPH ENVIRONMENTAL RESPONSE TRUST	2926 DAVISON RD	FLINT	MI	48506	YE	YE			
5	MID005356654	CITY OF FLINT	300 N CHEVROLET AVE	FLINT	MI	48555	YE				
5	MID005356712	REVITALIZING AUTO COMMUNITIES ENVIRONMENTAL RESPONSE	902 E LEITH ST	FLINT	MI	48550	YE	YE			
5	MID005356860	REVITALIZING AUTO COMMUNITIES ENVIRONMENTAL RESPONSE	1245 E COLDWATER RD	FLINT	MI	48505	YE	YE	YE	YE	
5	MID005356951	GENERAL MOTORS LLC	65100 VAN SETRE RD	FLINT	MI	48551					
5	MID005512066	EI DUPONT FLINT SITE	1555 JAMES P COLE BLVD	FLINT	MI	48503	YE	YE	YE		
5	MID980568620	DPH ENVIRONMENTAL RESPONSE TRUST	1601 N AVERILL AVE	FLINT	MI	48556	YE	YE			
5	MIR000020743	REVITALIZING AUTO COMMUNITIES ENVIRONMENTAL RESPONSE	1245 E COLDWATER RD	FLINT	MI	48505	YE	YE	YE		
5	MID099124299	JOHNSON CONTROLS INC	425 FRANK ST	FOWLerville	MI	48836	YE	YE	YE		
5	MID980506265	GRAND BLANC LANDFILL	2277 W GRAND BLANC RD	GRAND BLANC	MI	48439	YE	YE	YE		
5	MID082771700	GRANGER LAND DEVELOPMENT COMPANY	8550 W GRAND RIVER HWY	GRAND LEDGE	MI	48837	YE	YE	YE		
5	MID006014666	LACKS INDUSTRIES INC	1601 GALBRAITH AVE SE	GRAND RAPIDS	MI	49546	YE	YE			
5	MID072589328	MI DEPT/NATURAL RESOURCES AND ENVIRONMENT	2637 WILSON SW	GRAND RAPIDS	MI	49534	YE	YE			
5	MID006021414	FEDERAL-MOGUL LLC	510 E GROVE ST	GREENVILLE	MI	48838	YE	YE			
5	MID006013643	WARNER LAMBERT COMPANY LLC	188 HOWARD AVE	HOLLAND	MI	49424	YE	YE	YE		
5	MID006020895	KHI INC	582 E LAKEWOOD BLVD	HOLLAND	MI	49424	YE	YE	YE	YE	
5	MID006411953	BLACK RIVER SCHOOLS	491 COLUMBIA AVE	HOLLAND	MI	49423	YE	YE	YE		
5	MID048223986	BASF CORP	471 HOWARD AVE	HOLLAND	MI	49424	YE	YE	YE		
5	MID041413154	DYNO NOBEL INC	9045 COUNTY ROAD 476	ISHPEMING	MI	49849	YE				
5	MID000820381	PHARMACIA & UPJOHN CO LLC	7171 PORTAGE RD	KALAMAZOO	MI	49001-0199	YE	YE	YE	YE	
5	MID001876663	5200 EAST CORK ST INVESTORS LLC	5200 E CORK ST	KALAMAZOO	MI	49048	YE				
5	MID005360680	CYTEC INDUSTRIES INC	3115 MILLER RD	KALAMAZOO	MI	49001	YE	YE			
5	MID005356894	GENERAL MOTORS LLC	920 TOWNSEND ST MC 489-066-600	LANSING	MI	48933	YE	YE			
5	MID005356928	REVITALIZING AUTO COMMUNITIES ENVIRONMENTAL RESPONSE	401 N VERLINDEN AVE	LANSING	MI	48915	YE	YE			
5	MID005380134	DEMME PROPERTIES LLC	1600 N LARCH ST	LANSING	MI	48906	YE	YE			
5	MID047173653	ASHLAND INC	1800 GLENROSE AVE	LANSING	MI	48915	YE	YE			
5	MID053343976	MICHIGAN STATE UNIVERSITY - WASTE STORAGE FACILITY	3634 EAST JOLLY RD	LANSING	MI	48910	YE	YE	YE	YE	
5	MID980700827	REVITALIZING AUTO COMMUNITIES ENVIRONMENTAL RESPONSE	2800-2801WEST SAGINAW ST MC 489-070-	LANSING	MI	48917	YE	YE			
5	MID005356621	AMAZON.COM.DEDC, LLC	39000 AMRHEIN RD	LIVONIA	MI	48150	YE	YE			

Appendix B

Declaration of Restrictive Convent

Appendix C
Request for MDEQ Review of No Further Action
(NFA) Report – Form and Supporting Documents

Section D: Facility/Property Subject to (Check all that apply):

Facility regulated under Part 201, source other than listed below or source unknown Part 201 Site ID, if known:	<input checked="" type="checkbox"/>
Leaking Underground Storage Tank regulated pursuant to Part 213. Part 211/213 Facility ID, if known:	<input type="checkbox"/>
Oil or gas production and development regulated pursuant to Part 615 or 625	<input type="checkbox"/>
Licensed landfill regulated pursuant to Part 115	<input type="checkbox"/>
Licensed hazardous waste treatment, storage, or disposal facility regulated pursuant to Part 111	<input type="checkbox"/>
Consent Agreement or other legal agreement with the MDEQ	<input type="checkbox"/>

Section E: Are/were the following present at the facility (Check all that apply):

	Current	Previously	Unknown
Mobil or migrating non aqueous phase liquids (NAPL)	<input type="checkbox"/>	<input type="checkbox"/>	<input type="checkbox"/>
Soil contamination above residential criteria	<input checked="" type="checkbox"/>	<input type="checkbox"/>	<input type="checkbox"/>
Soil contamination above non-residential criteria	<input type="checkbox"/>	<input checked="" type="checkbox"/>	<input type="checkbox"/>
Soil aesthetic impacts	<input type="checkbox"/>	<input type="checkbox"/>	<input type="checkbox"/>
Groundwater contamination above residential criteria	<input checked="" type="checkbox"/>	<input type="checkbox"/>	<input type="checkbox"/>
Groundwater contamination above non-residential criteria	<input type="checkbox"/>	<input checked="" type="checkbox"/>	<input type="checkbox"/>
Groundwater aesthetic impacts	<input type="checkbox"/>	<input type="checkbox"/>	<input type="checkbox"/>
Soil Gas contamination above residential vapor intrusion (VI) screening levels	<input type="checkbox"/>	<input type="checkbox"/>	<input type="checkbox"/>
Soil Gas contamination above non-residential VI screening levels	<input type="checkbox"/>	<input type="checkbox"/>	<input type="checkbox"/>
Conditions immediately dangerous to life or health (IDLH)	<input type="checkbox"/>	<input type="checkbox"/>	<input type="checkbox"/>
Fire & Explosion hazards related to releases	<input type="checkbox"/>	<input type="checkbox"/>	<input type="checkbox"/>
Contamination existing in drinking water supply	<input type="checkbox"/>	<input type="checkbox"/>	<input type="checkbox"/>
Imminent threat to drinking water supply	<input type="checkbox"/>	<input type="checkbox"/>	<input type="checkbox"/>
Impact to surface water	<input type="checkbox"/>	<input type="checkbox"/>	<input type="checkbox"/>
Impact to surface water sediments above screening levels	<input type="checkbox"/>	<input type="checkbox"/>	<input type="checkbox"/>

Section F: The following questions assist MDEQ in evaluating the No Further Action Report:

Have other plans or reports, BEAs, DDCs, NFAs, etc. been submitted for this facility?		
Facility Name, if different than this submittal:		
Date and Name of most recent submittal:		
Response Activities or Remedial Action that have been Implemented (Check all that apply):		
	Current	Previously
Excavation	<input type="checkbox"/>	<input checked="" type="checkbox"/>
Physical or Engineered Exposure Barrier	<input type="checkbox"/>	<input type="checkbox"/>
Active Soil Remediation System	<input type="checkbox"/>	<input type="checkbox"/>
In-situ Soil Remediation	<input type="checkbox"/>	<input type="checkbox"/>
Active Groundwater Remediation System	<input type="checkbox"/>	<input type="checkbox"/>
In-situ Groundwater Remediation	<input type="checkbox"/>	<input type="checkbox"/>
Groundwater Monitored Natural Attenuation	<input type="checkbox"/>	<input type="checkbox"/>
Containment, Physical or Hydraulic	<input type="checkbox"/>	<input type="checkbox"/>
Vapor Intrusion Barrier	<input type="checkbox"/>	<input type="checkbox"/>
Vapor Intrusion Remediation System	<input type="checkbox"/>	<input type="checkbox"/>
Other, Specify:		
Remedial Action Relies on (Check all that apply):		
Mixing Zone	<input type="checkbox"/>	
Part 201 Section 20118(4) and (5)	<input type="checkbox"/>	
MIOSHA demonstration (Section 20120a(18))	<input type="checkbox"/>	
Restrictive Covenant	<input checked="" type="checkbox"/>	
Institutional Control (Section 20121(8))	<input type="checkbox"/>	
Alternative Instruments (Section 20121(9))	<input type="checkbox"/>	

Post Closure Plan and Components:
 Post Closure Plan Required? Yes No (Residential, Unrestricted Category Only)
 Plan Includes:
 Permanent Markers
 Restrictive Covenant
 Other Institutional Controls

Post Closure Agreement and Components:
 Post Closure Agreement Required? Yes No
 Agreement Includes:
 FAM
 FAM, de minimus
 Waiver of Permanent Marker

Section G: Attachments (Required):

	Yes
Environmental Professional's Affidavit is attached:	<input checked="" type="checkbox"/>
Environmental Professional's Certificate of Insurance is attached:	<input checked="" type="checkbox"/>
Submitter's Affidavit is attached:	<input checked="" type="checkbox"/>

Section H: Environmental Professional Signature:

With my signature below, I certify that this report and all related materials are true, accurate, and complete to the best of my knowledge and belief.

Signature: _____ Date: _____

Printed Name: Michael Tomka

Company: GHD Services, Inc.

Mailing Address: 26850 Haggerty Road City: Farmington Hills State: MI Zip: 48331

Telephone: 519-884-0510 E-mail: Michael.Tomka@GHD.com

Section I: Submitter Signature:

With my signature below, I certify that this report and all related materials are true, accurate, and complete to the best of my knowledge and belief and I am legally authorized to sign for the submitter.

Signature: _____ Date: _____

(Person legally authorized to bind the legal entity)

Printed Name: Dave Favero

Title and Relationship of signatory to submitter: Deputy Cleanup Manager - Michigan

Address: 500 Woodward Ave., Suite 2650 City: Detroit State: MI Zip: 48226

Telephone: 313-486-2908 E-Mail:

This form and the No Further Action Report should be submitted to the DEQ Remediation and Redevelopment Division District Office unless the response activity is related to a facility that is regulated by another DEQ Division. A district map is located at www.michigan.gov/deqrrd. If regulated by another division, contact should be made with that division for information on where to submit the form and report.



about GHD

GHD is one of the world's leading professional services companies operating in the global markets of water, energy and resources, environment, property and buildings, and transportation. We provide engineering, environmental, and construction services to private and public sector clients.

Michael Tomka
Michael.Tomka@ghd.com
519.3403-3823

Richard Chatfield
Richard.Chatfield@ghd.com
519.340.3870

www.ghd.com