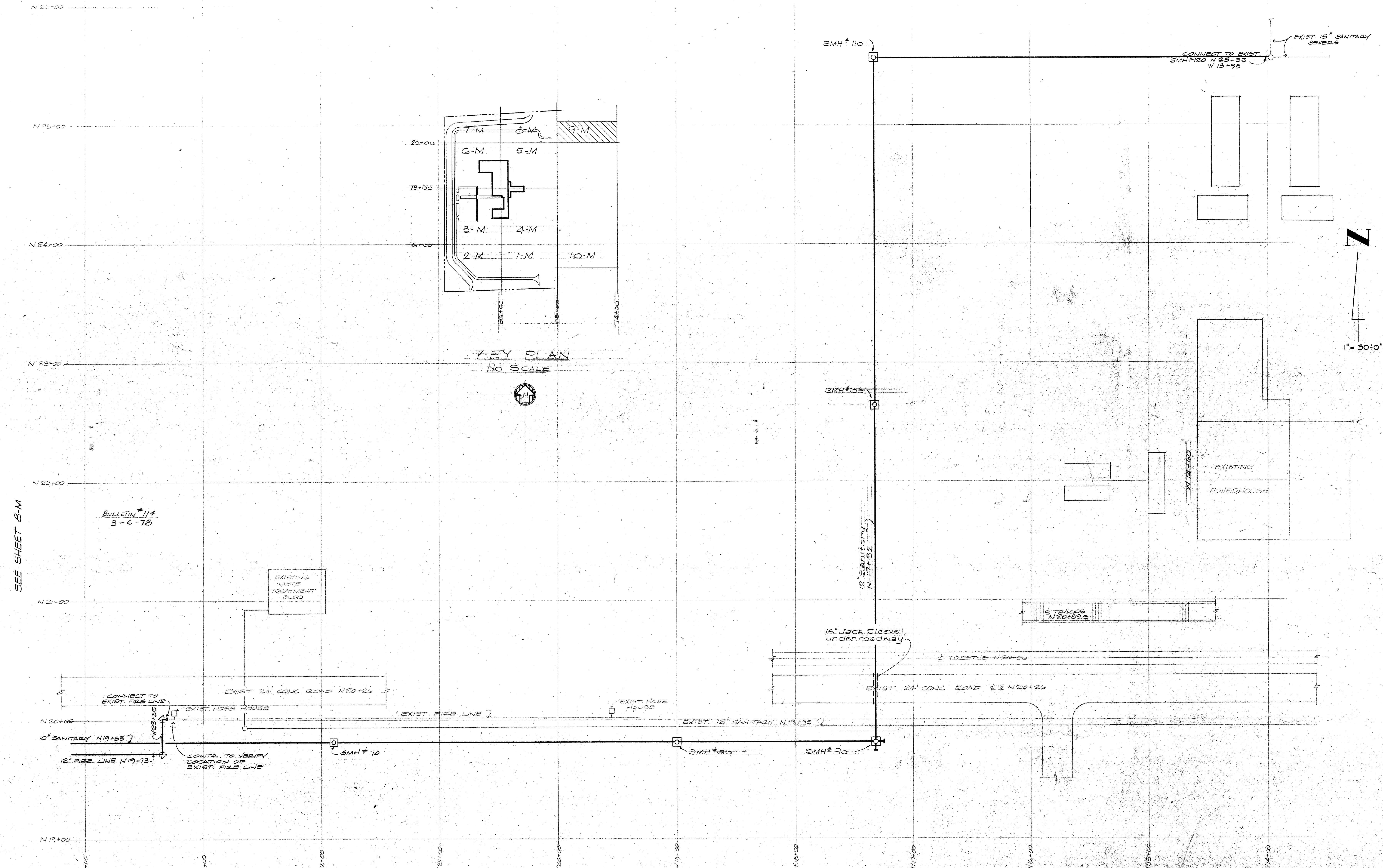


NOTE - CONTRACTOR SHALL OBTAIN PERMIT TO CONNECT NEW SANITARY SEWER TO EXISTING FROM THE WAYNE COUNTY BOARD OF PUBLIC WORKS.



SEE SHEET 8-M

REVISIONS		IN CHARGE: G.W. HOLNESS	
Date	By	Date	By
10-30-77	GH	1/8	
3-2-78	GH	1/8	
4-19-78	GH	1/20	
7-27-78	GH	1/24	
7-31-78	GH	1/24	

DESIGN: G.W.H.
 DRAWN: R.S.W.
 CHECKED: J.N.
 DATE: 3-20-77 APP: [Signature]

ALBERT KAHN ASSOCIATES, INC.
 ARCHITECTS AND ENGINEERS
 NEW CENTER BUILDING
 DETROIT, MICHIGAN 48226

JOB TITLE: ROMULUS ENGINEERING COMPLEX
 DETROIT DIESEL ALLISON DIVISION
 GENERAL MOTORS CORPORATION MICHIGAN
 SHEET TITLE: PART SITE PLAN - MECHANICAL SERVICES
 JOB NO. 2297
 SHEET NO. 9-M