



October 13, 2015

Mr. Richard Conforti
Environmental Engineer
Office of Waste Management and Radiological Protection
Department of Environmental Quality
PO Box 30241
Lansing, MI 48909-7741

RE: *Quarterly Status Report –July 2015 – September 2015*
Coldwater Road Landfill
1245 East Coldwater Road, Flint, MI
MID 005 356 860

FILE: 15388/60794/Docs

Dear Mr. Conforti:

In accordance with requirements of the approved Post-Closure Care Plan, we are providing you with this Quarterly Status Report for the third quarter 2015.

1. Work Completed This Reporting Period

- » Dewatering of the leak detection vaults occurred on July 17, 2015, August 11, 2015, and September 24, 2015.
- » The grass along access roads was mowed on August 4, 2015.
- » Sampling of accumulated liquids was conducted on August 25, 2015.
- » Annual inspection with the City of Flint, Department of Public Works and Utilities Water Pollution Control occurred on September 2, 2015.
- » The third quarter 2015 site inspection occurred on September 2, 2015.
- » Discharge of liquids from the accumulation tank occurred on September 2, 2015.

2. Summaries of Findings

- » Observed 2 potentially active animal burrows on June 19, 2015 and September 24, 2015 and set traps. On July 29, 2015 a trapped animal was observed and the burrow was closed out. On September 24, 2015 an animal was trapped and the burrow was closed out. See attached figure for animal burrow locations and photo log for detailed information concerning animal burrow activities for this quarter.

3. Summaries of Changes

- » None.

4. Summaries of all Contact with Local Community

- » None.

5. Summaries of all Problems

- » None.

6. Actions Being Taken to Rectify Problems

» None.

7. Changes in Personnel

» None.

8. Projected Work

- » Dewatering of the leak detection vaults is scheduled for October 16, 2015, November 18, 2015, and December 16, 2015.
- » Sampling and discharge of accumulated liquids will be conducted as needed.
- » The fourth quarter 2015 site inspection will be conducted in December 2015.
- » The semiannual groundwater monitoring and leak detection sampling will be conducted during the fourth quarter.

9. Reports/Data

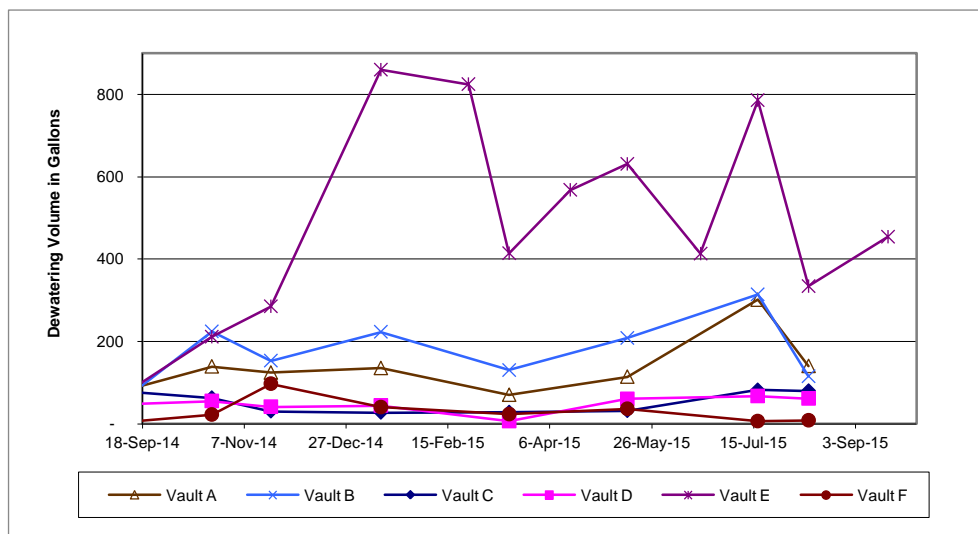
» The following table presents the vault dewatering and monthly leachate sump data for the third quarter:

DATE 2015	GALLONS LEAK DET A	GALLONS LEAK DET B	GALLONS LEAK DET C	GALLONS LEAK DET D	GALLONS LEAK DET E	GALLONS LEAK DET F	TOTAL LEAK GALLONS	MONTHLY SUMP VOLUMES GALLONS
17-Jul-15	301*	314*	82*	67*	786	6*	1,556	169
11-Aug-15	140	115	80	61	334	8	738	163
19-Sep-15	--	--	--	--	454	--	454	151
TOTAL	441	429	162	128	1,574	14	2,748	483

* Indicates 2 month totals

Total volume of water removed from the vaults during the third quarter was 2,748 gallons. According to the master flow meter and discharge records, a total of 483 gallons were pumped from the sumps during the third quarter.

The following graph presents the vault dewatering data in graphical format for the past year:



10. Active Task 2015 Budget Status

- » Task 1 – Continue Ongoing OMM: 75% complete, 73% of 2015 budget.
- » Task 4 – Fe & Mn Delineation: 90% complete, 100% of 2015 budget.
- » Task 6 – Agency Coord./Negotiation & Reporting: 55% complete, 54% of 2015 budget.
- » Task 7 – Project Management & Coordination: 75% complete, 65% of 2015 budget.

Please call me at 248-477-5701 x16 if you have any questions.

Very truly yours,

O'BRIEN & GERE ENGINEERS, INC.



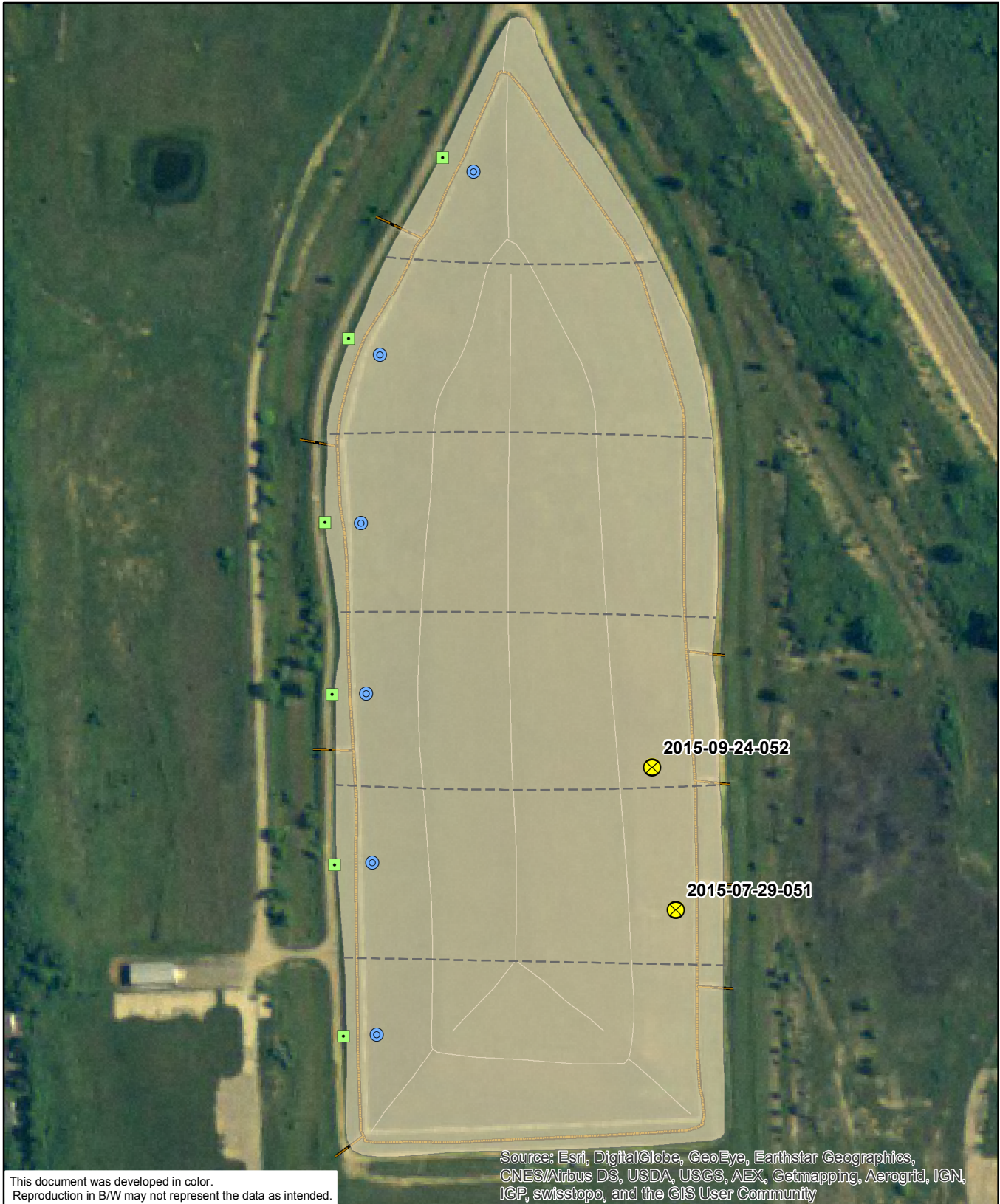
Clifford Yantz
Scientist-3

cc: Mr. Grant Trigger – RACER Trust
Mr. David Favero – RACER Trust
Mr. Kevin Schneider – O'Brien & Gere

LOCATION: Cell E4 – Bottom of slope		APPROX. LENGTH: 2 feet	APPROX. DEPTH: 1 foot	APPROX. DIAMETER: 10 inches
DATE FOUND: 6/19/15	DATE CLOSED: 7/29/15			
NOTES: ID: 2015-07-29-051 PRE repair photo of burrow. Trap set up for 7 weeks. Trapped animal. No signs of liner damage				
LOCATION: Cell E4 – Bottom of slope		APPROX. LENGTH: 2 feet	APPROX. DEPTH: 1 foot	APPROX. DIAMETER: 10 inches
DATE FOUND: 6/19/15	DATE CLOSED: 7/29/15			
NOTES: POST repair photo. Filled in burrow.				

LOCATION: Cell D4 – Bottom of slope		APPROX. LENGTH: 5 feet	APPROX. DEPTH: 15 inches	APPROX. DIAMETER: 6 inches
DATE FOUND: 9/24/15	DATE CLOSED: 9/24/15			
NOTES: ID: 2015-09-24-052 PRE repair photo of burrow. Trap set up for one day. Trapped animal. No signs of liner damage				
LOCATION: Cell D4 – Bottom of slope		APPROX. LENGTH: 5 feet	APPROX. DEPTH: 15 inches	APPROX. DIAMETER: 6 inches
DATE FOUND: 9/24/15	DATE CLOSED: 9/24/15			
NOTES: POST repair photo. Filled in burrow.				

PLOTDATE: 09/18/13 10:58:32 AM SchneikB
I:\Racer-Trust.15388\60794.Coldwater-Rd-L\Docs\Reports\Quarterly Progress Report\3rd Qrt - September\001 - Animal Burrow Location Map 3rd Qrt-2015.mxd



This document was developed in color.
Reproduction in B/W may not represent the data as intended.

Source: Esri, DigitalGlobe, GeoEye, Earthstar Geographics, CNES/Airbus DS, USDA, USGS, AEX, Getmapping, Aerogrid, IGN, IGP, swisstopo, and the GIS User Community

LEGEND

- LEACHATE COLLECTION SUMP
- ACCESS PORT FOR LEAK DETECTION VAULT
- ⊗ ANIMAL BURROW LOCATION

RACER TRUST
COLDWATER ROAD
LANDFILL FACILITY
FLINT, MICHIGAN

**3RD QUARTER 2015
BURROW LOCATION
MAP**

