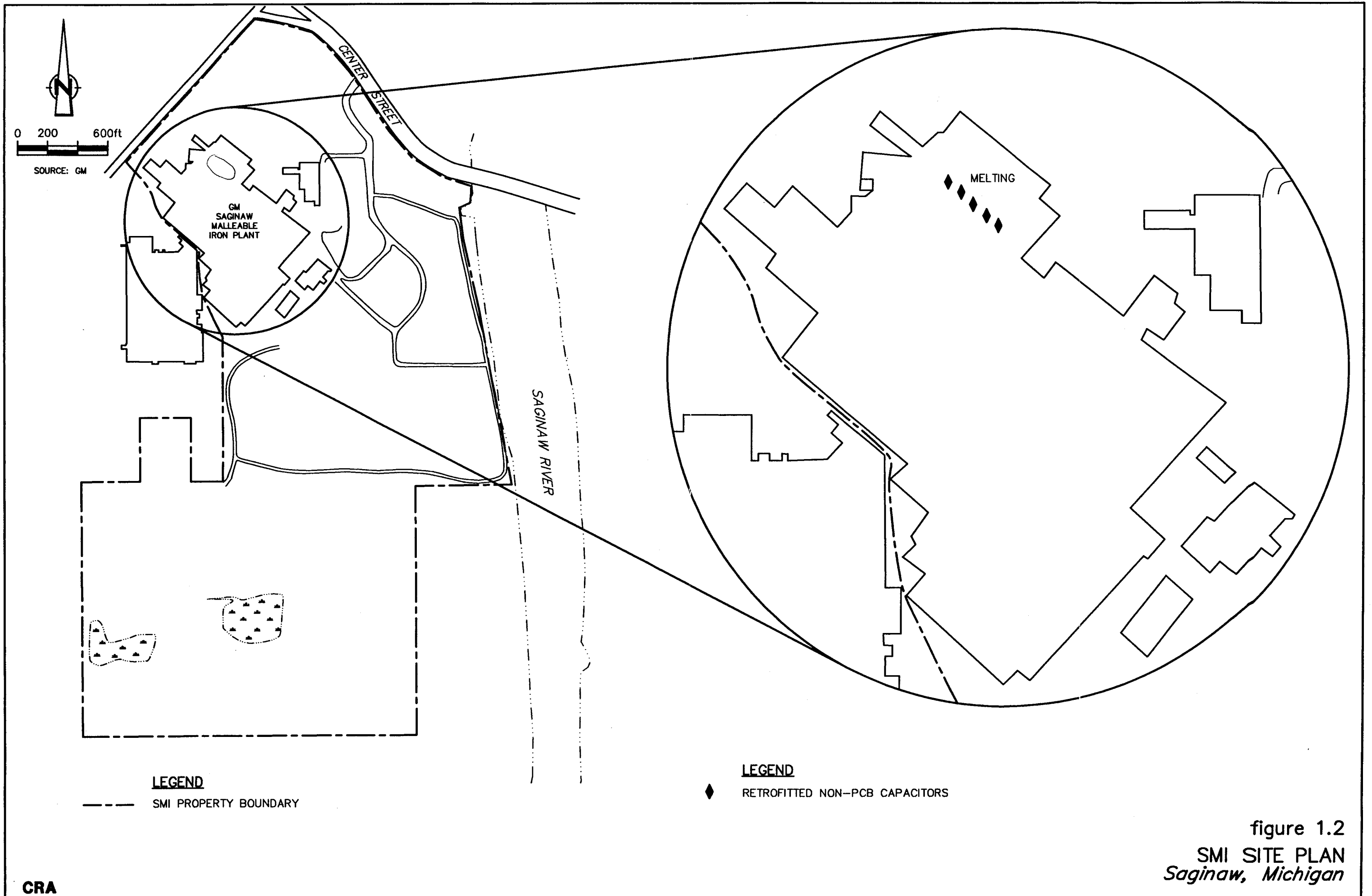


SOURCE: USGS QUADRANGLE MAP;
SAGINAW, MICHIGAN



CRA

figure 1.1
SITE LOCATION
GMPT SAGINAW MALLEABLE IRON PLANT
Saginaw, Michigan



LEGEND

----- SMI PROPERTY BOUNDARY

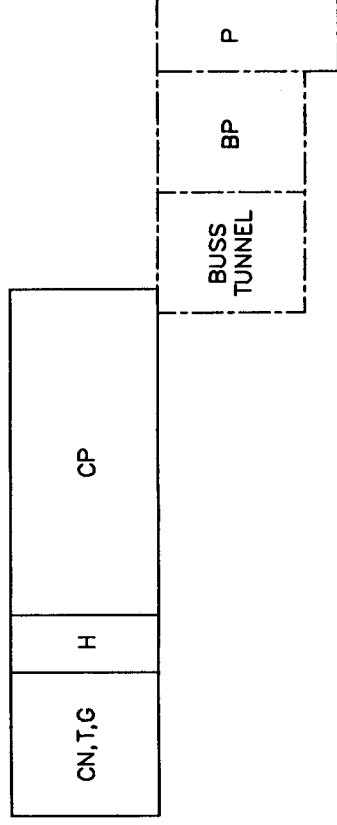
LEGEND

◆ RETROFITTED NON-PCB CAPACITORS

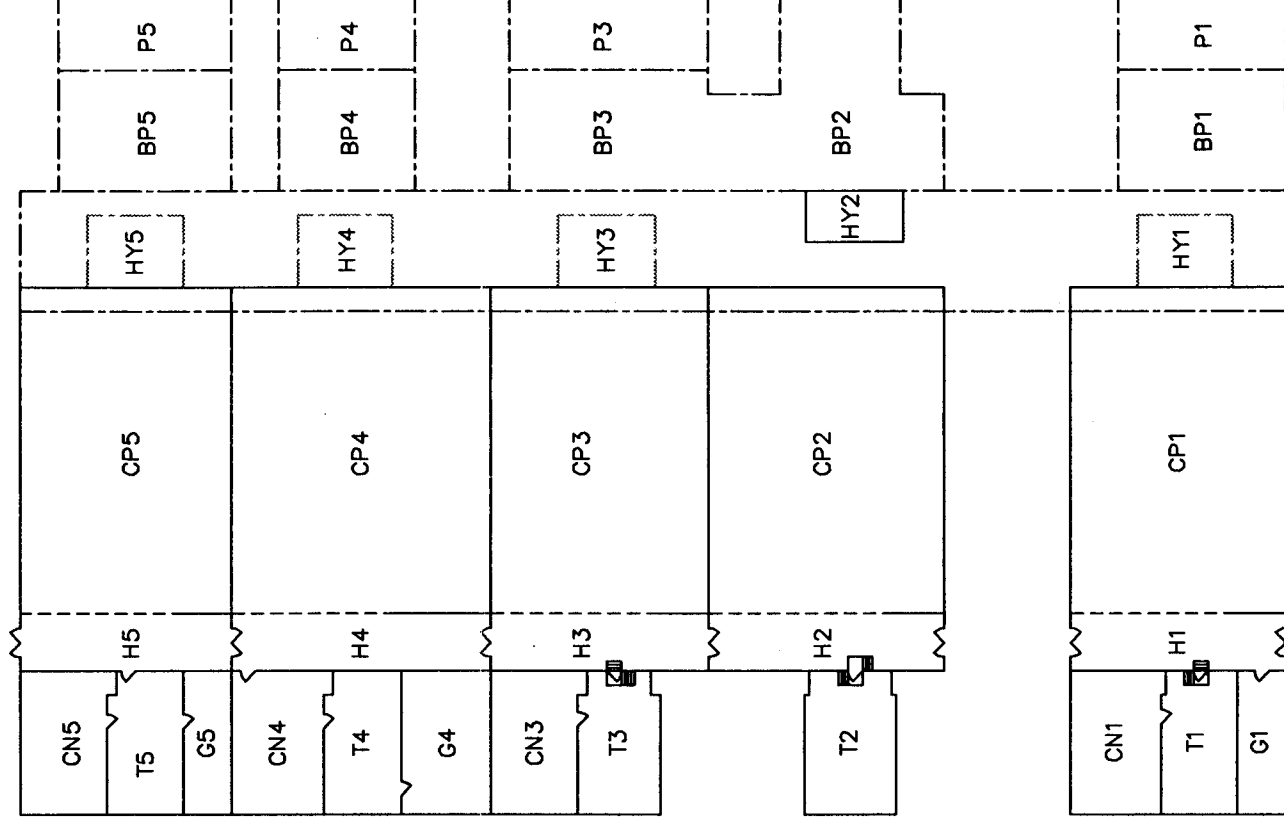
figure 1.2
 SMI SITE PLAN
 Saginaw, Michigan

0 20 40ft
 SCALE: 1/8" = 5'-0"

HY



PROFILE



PLAN VIEW

LEGEND

WALL MARKINGS:

- SCREEN
- - - ON LOWER LEVEL
- · - · - ON UPPER LEVEL
- ON MAIN LEVEL

ROOM DESIGNATIONS:

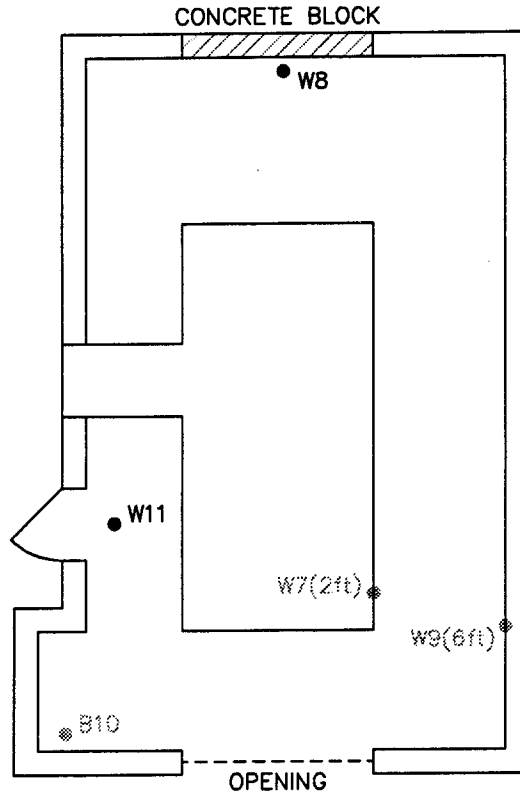
- CP5 CAPACITOR ROOM 5
- CN5 CONTROL ROOM 5
- G5 GENERATOR ROOM 5
- T5 TRANSFORMER ROOM 5
- HY5 HYDRAULIC ROOM 5
- BP5 BUSS TUNNEL TO PIT 5
- P5 PIT 5
- H5 HALL 5

figure 2.1
 ROOM LOCATIONS
 OVERVIEW PLAN
 GMPT SAGINAW MALLEABLE IRON PLANT
 Saginaw, Michigan



SCALE: 1/8" = 1'-0"

CEILING HEIGHT = 15'



SAMPLE ID	CONCENTRATION
W7	<10 μ g/100cm ²
W8	11 μ g/100cm ²
W9	<10 μ g/100cm ²
B10	<0.33mg/kg
W11	24 μ g/100cm ²

NOTES: SAMPLES TAKEN NOV.11/93
 B=BULK SAMPLES
 W=WIPE SAMPLES

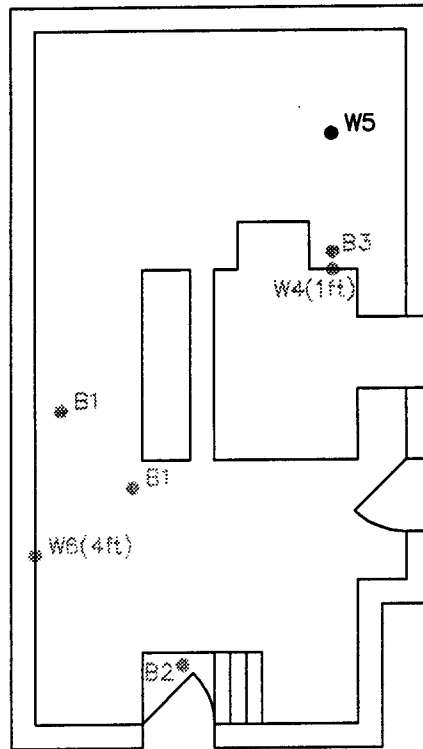
figure 2.2
 SAMPLE LOCATIONS
 CONTROL ROOM 1
 GMPT SAGINAW MALLEABLE IRON PLANT
 Saginaw, Michigan

CRA



SCALE: 1/8" = 1'-0"

CEILING HEIGHT = 20'



SAMPLE ID	CONCENTRATION
B1	<0.33mg/kg
B2	<0.33mg/kg
B3	<0.33mg/kg
W4	<10µg/100cm ²
W5	46µg/100cm ²
W6	<10µg/100cm ²

NOTES: SAMPLES TAKEN NOV.11/93
 B=BULK SAMPLES
 W=WIPE SAMPLES
 B2 TAKEN UNDER LANDING

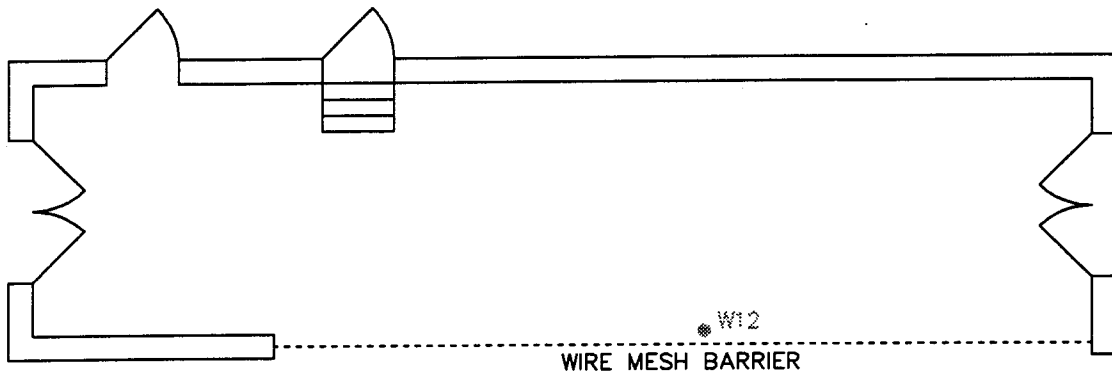
figure 2.3
 SAMPLE LOCATIONS
 TRANSFORMER ROOM 1
 GMPT SAGINAW MALLEABLE IRON PLANT
 Saginaw, Michigan

CRA



SCALE: 1/8" = 1'-0"

CEILING HEIGHT = 15'



SAMPLE ID	CONCENTRATION
W12	<10 μ g/100cm ²

NOTES: SAMPLES TAKEN NOV.11/93
W=WIPE SAMPLES

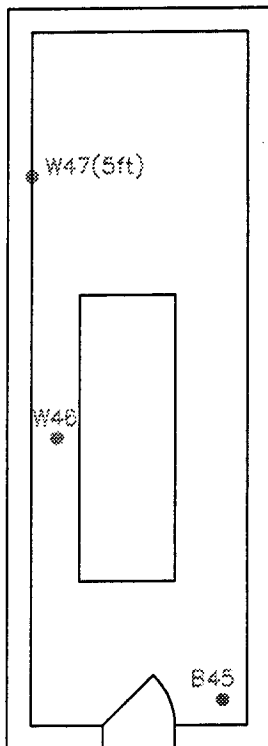
figure 2.4
SAMPLE LOCATIONS
HALLWAY 1
GMPT SAGINAW MALLEABLE IRON PLANT
Saginaw, Michigan

CRA



SCALE: 1/8" = 1'-0"

CEILING HEIGHT = 15'

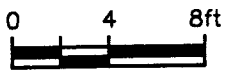


SAMPLE ID	CONCENTRATION
B45	<0.33mg/kg
W46	<10µg/100cm ²
W47	<10µg/100cm ²

NOTES: SAMPLES TAKEN NOV.11/93
 B=BULK SAMPLES
 W=WIPE SAMPLES

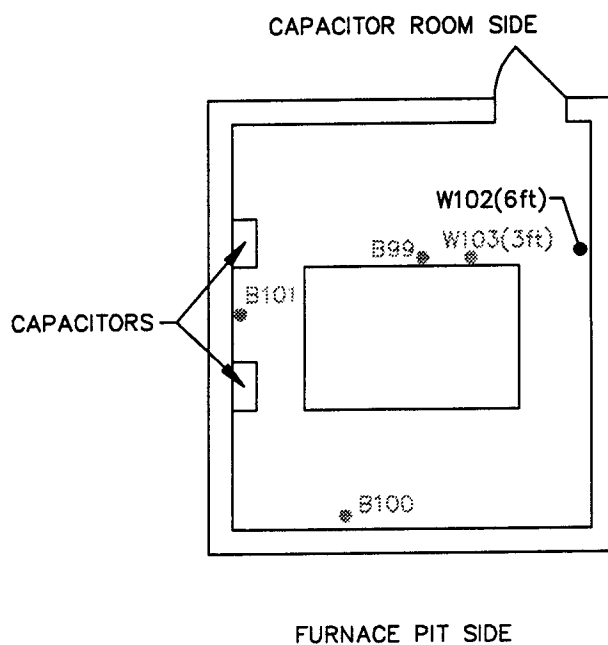
figure 2.5
 SAMPLE LOCATIONS
 GENERATOR ROOM 1
 GMPT SAGINAW MALLEABLE IRON PLANT
 Saginaw, Michigan

CRA



SCALE: 1/8" = 1'-0"

CEILING HEIGHT = 8'



SAMPLE ID	CONCENTRATION
B99	<0.43mg/kg
B100	<0.33mg/kg
B101	<0.46mg/kg
W102	10µg/100cm ²
W103	<10µg/100cm ²

NOTES: SAMPLES TAKEN NOV.11/93
 B=BULK SAMPLES
 W=WIPE SAMPLES

figure 2.6

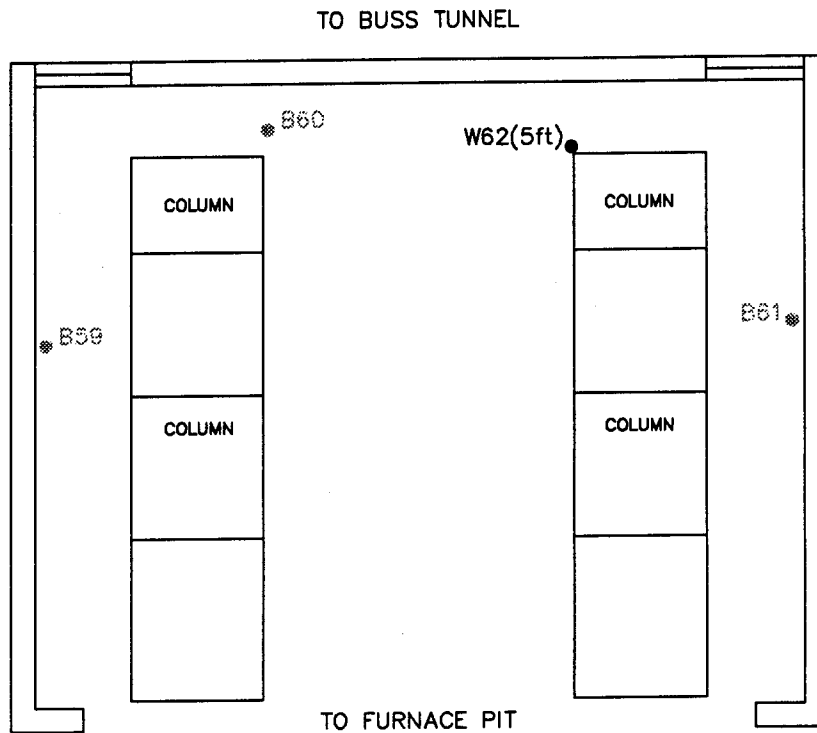
SAMPLE LOCATIONS
 HYDRAULIC ROOM 1
 GMPT SAGINAW MALLEABLE IRON PLANT
 Saginaw, Michigan

CRA



SCALE: 1/8" = 1'-0"

CEILING HEIGHT = 12'



SAMPLE ID	CONCENTRATION
B59	<0.33mg/kg
B60	<0.33mg/kg
B61	<0.33mg/kg
W62	29µg/100cm ²

NOTES: SAMPLES TAKEN NOV.11/93
 B=BULK SAMPLES
 W=WIPE SAMPLES

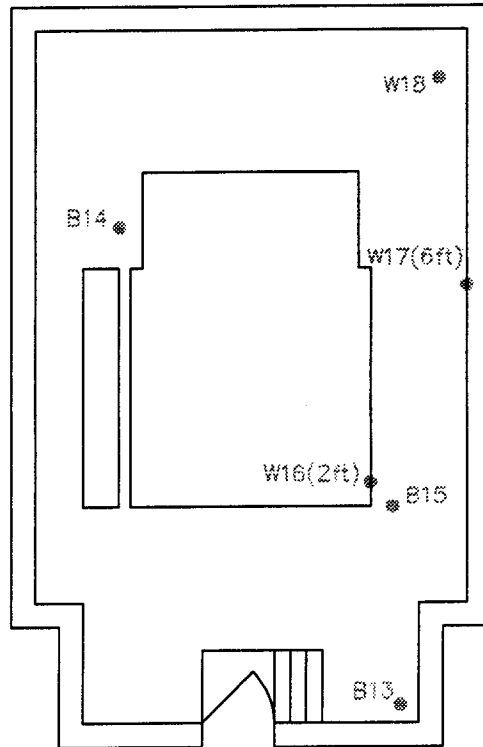
figure 2.7
 SAMPLE LOCATIONS
 BUSS TUNNEL TO PIT 1
 GMPT SAGINAW MALLEABLE IRON PLANT
 Saginaw, Michigan

CRA



SCALE: 1/8" = 1'-0"

CEILING HEIGHT = 20'



SAMPLE ID	CONCENTRATION
B13	<0.33mg/kg
B14	<0.33mg/kg
B15	<0.33mg/kg
W16	<10µg/100cm ²
W17	<10µg/100cm ²
W18	<10µg/100cm ²

NOTES: SAMPLES TAKEN NOV.11/93
 B=BULK SAMPLES
 W=WIPE SAMPLES

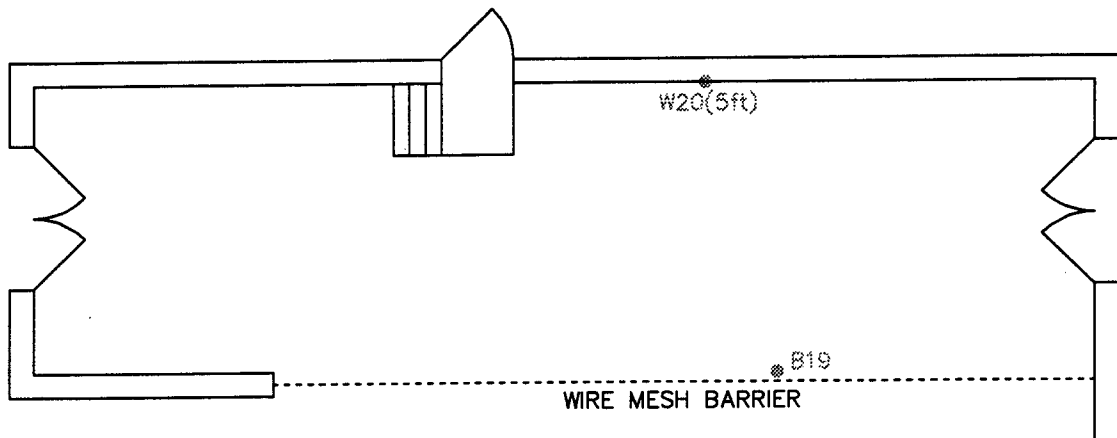
figure 2.8
 SAMPLE LOCATIONS
 TRANSFORMER ROOM 2
 GMPT SAGINAW MALLEABLE IRON PLANT
 Saginaw, Michigan

CRA



SCALE: 1/8" = 1'-0"

CEILING HEIGHT = 15'



SAMPLE ID	CONCENTRATION
B19	<0.33mg/kg
W20	<10µg/100cm ²

NOTES: SAMPLES TAKEN NOV.11/93
 B=BULK SAMPLES
 W=WIPE SAMPLES

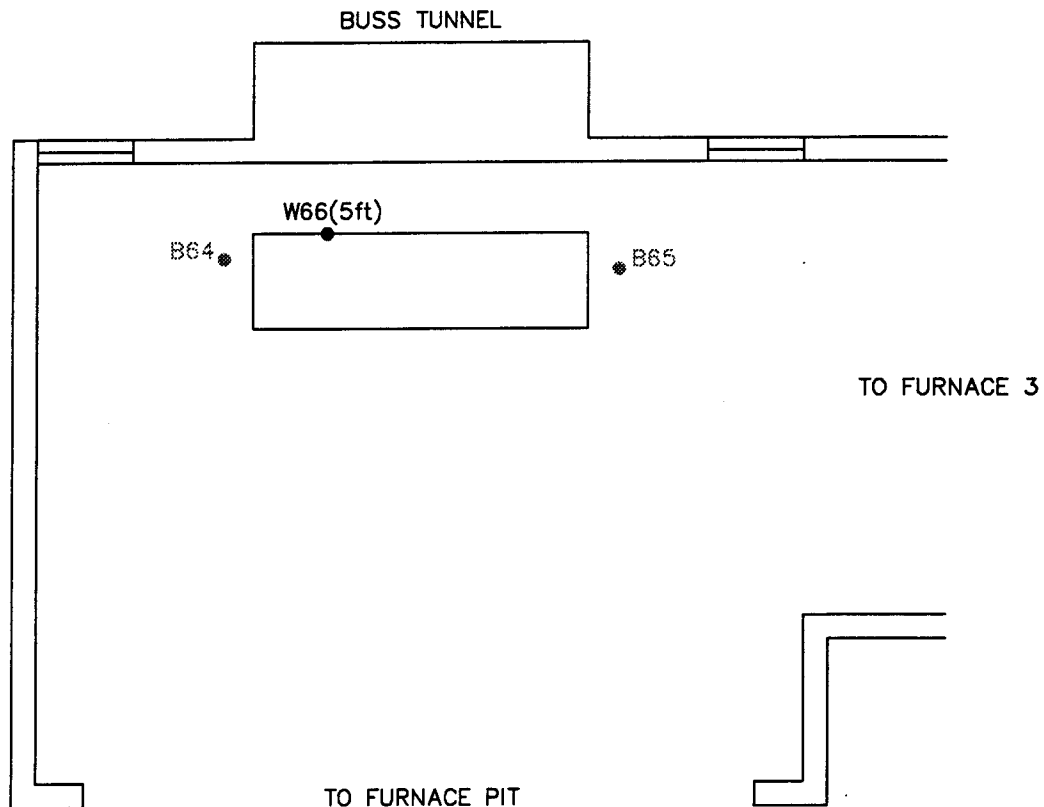
figure 2.9
 SAMPLE LOCATIONS
 HALLWAY 2
 GMPT SAGINAW MALLEABLE IRON PLANT
 Saginaw, Michigan

CRA



SCALE: 1/8" = 1'-0"

CEILING HEIGHT = 18'

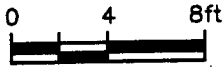


SAMPLE ID	CONCENTRATION
B64	0.36mg/kg
B65	<0.46mg/kg
W66	400µg/100cm ²

NOTES: SAMPLES TAKEN NOV.11/93
 B=BULK SAMPLES
 W=WIPE SAMPLES

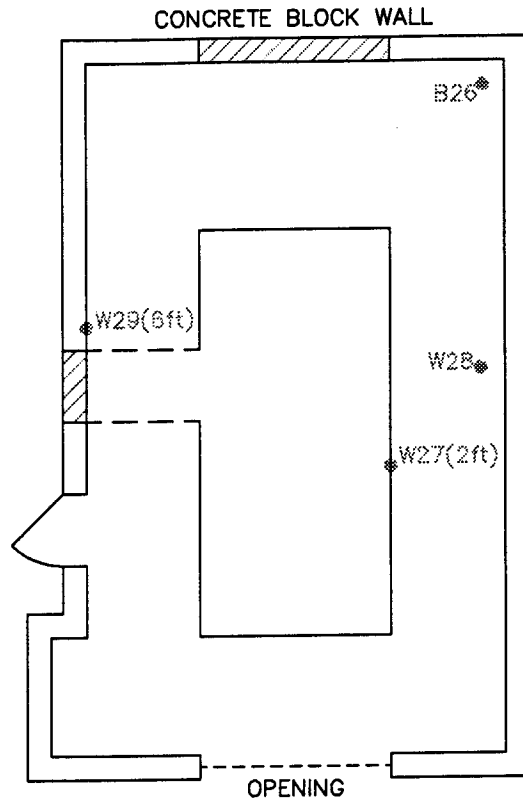
figure 2.10
 SAMPLE LOCATIONS
 BUSS TUNNEL TO PIT 2
 GMPT SAGINAW MALLEABLE IRON PLANT
 Saginaw, Michigan

CRA



SCALE: 1/8" = 1'-0"

CEILING HEIGHT = 15'

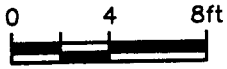


SAMPLE ID	CONCENTRATION
B26	<0.33mg/kg
W27	<10µg/100cm ²
W28	<10µg/100cm ²
W29	<10µg/100cm ²

NOTES: SAMPLES TAKEN NOV.11/93
 B=BULK SAMPLES
 W=WIPE SAMPLES

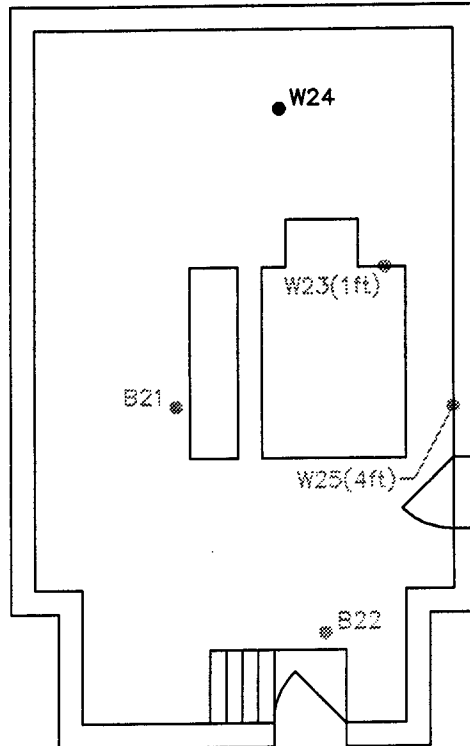
figure 2.11
 SAMPLE LOCATIONS
 CONTROL ROOM 3
 GMPT SAGINAW MALLEABLE IRON PLANT
 Saginaw, Michigan

CRA



SCALE: 1/8" = 1'-0"

CEILING HEIGHT = 20'



SAMPLE ID	CONCENTRATION
B21	<0.33mg/kg
B22	<0.33mg/kg
W23	<10 μ g/100cm ²
W24	130 μ g/100cm ²
W25	<10 μ g/100cm ²

NOTES: SAMPLES TAKEN NOV.11/93
 B=BULK SAMPLES
 W=WIPE SAMPLES

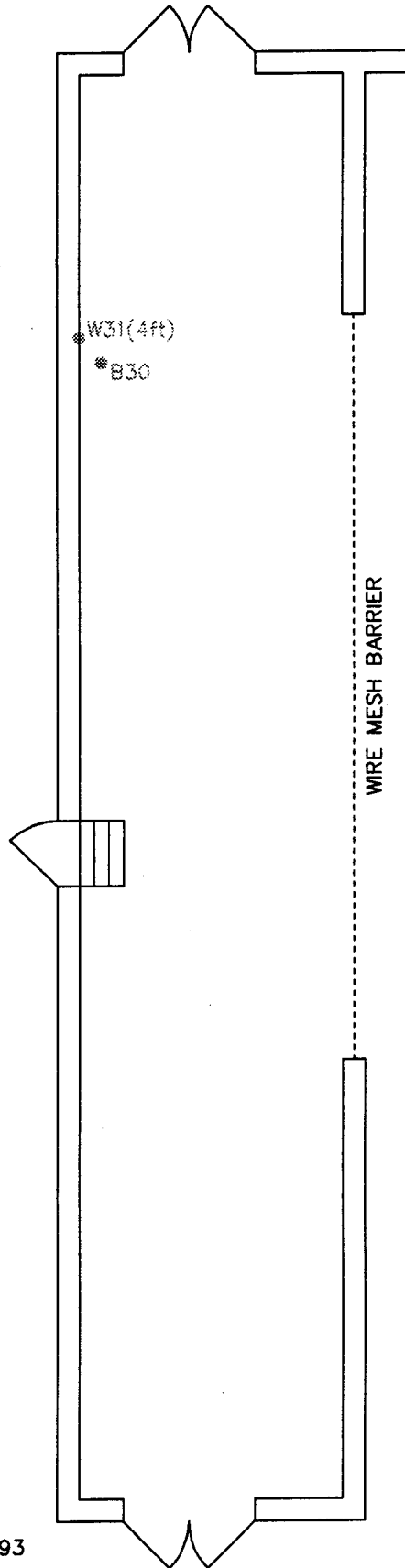
figure 2.12
 SAMPLE LOCATIONS
 TRANSFORMER ROOM 3
 GMPT SAGINAW MALLEABLE IRON PLANT
 Saginaw, Michigan

CRA



SCALE: 1/8" = 1'-0"

CEILING HEIGHT = 15'



SAMPLE ID	CONCENTRATION
B30	<0.33mg/kg
W31	<10µg/100cm ²

NOTES: SAMPLES TAKEN NOV.11/93
 B=BULK SAMPLES
 W=WIPE SAMPLES

GMPT SAGINAW MALLEABLE IRON PLANT
 Saginaw, Michigan

figure 2.13

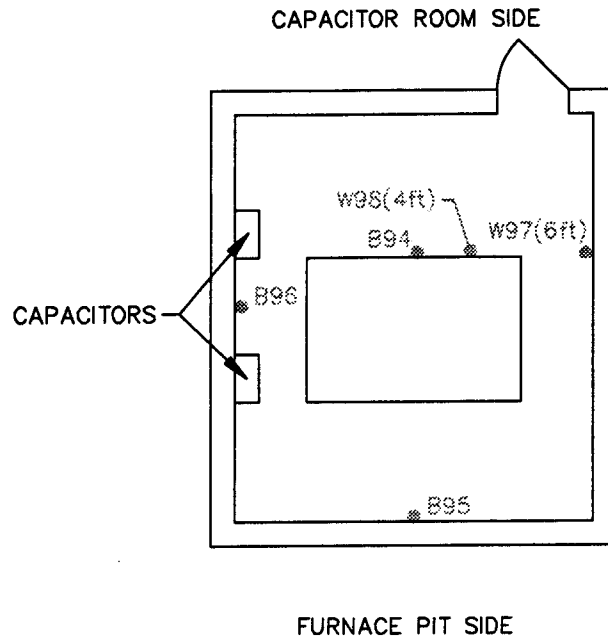
SAMPLE LOCATIONS
 HALLWAY 3

CRA



SCALE: 1/8" = 1'-0"

CEILING HEIGHT = 8'



SAMPLE ID	CONCENTRATION
B94	<0.36mg/kg
B95	<0.33mg/kg
B96	<0.56mg/kg
W97	<10µg/100cm ²
W98	<10µg/100cm ²

NOTES: SAMPLES TAKEN NOV.11/93
 B=BULK SAMPLES
 W=WIPE SAMPLES

figure 2.14

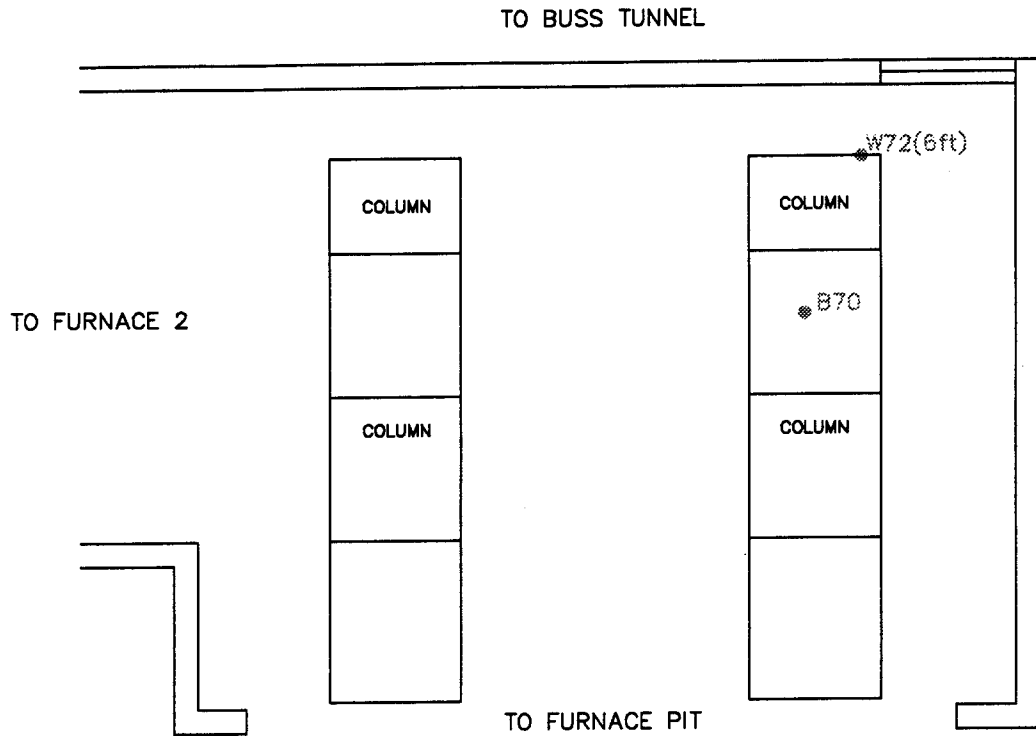
SAMPLE LOCATIONS
 HYDRAULIC ROOM 3
 GMPT SAGINAW MALLEABLE IRON PLANT
 Saginaw, Michigan

CRA



SCALE: 1/8" = 1'-0"

CEILING HEIGHT = 12'



SAMPLE ID	CONCENTRATION
B70	<0.33mg/kg
W72	<10µg/100cm ²

NOTES: SAMPLES TAKEN NOV.11/93
 B=BULK SAMPLES
 W=WIPE SAMPLES

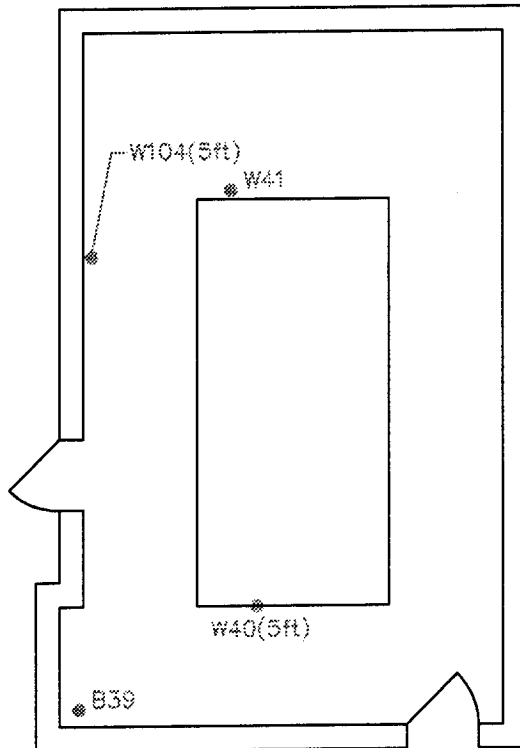
figure 2.15
 SAMPLE LOCATIONS
 BUSS TUNNEL TO PIT 3
 GMPT SAGINAW MALLEABLE IRON PLANT
 Saginaw, Michigan

CRA



SCALE: 1/8" = 1'-0"

CEILING HEIGHT = 15'



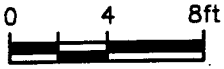
SAMPLE ID	CONCENTRATION
B39	<0.33mg/kg
W40	<10µg/100cm ²
W41	<10µg/100cm ²
W104	<10µg/100cm ²

NOTES: SAMPLES TAKEN NOV.11/93
 B=BULK SAMPLES
 W=WIPE SAMPLES

figure 2.16

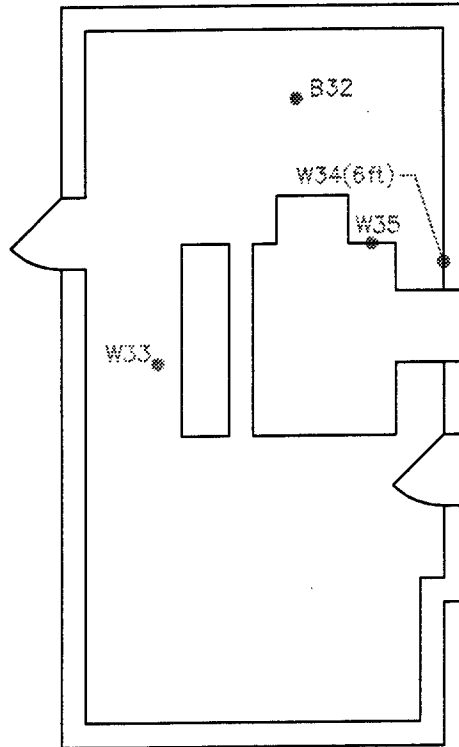
SAMPLE LOCATIONS
 CONTROL ROOM 4
 GMPT SAGINAW MALLEABLE IRON PLANT
 Saginaw, Michigan

CRA



SCALE: 1/8" = 1'-0"

CEILING HEIGHT = 20'

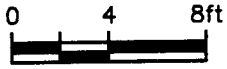


SAMPLE ID	CONCENTRATION
B32	<0.33mg/kg
W33	<10µg/100cm ²
W34	<10µg/100cm ²
W35	<10µg/100cm ²

NOTES: SAMPLES TAKEN NOV.11/93
 B=BULK SAMPLES
 W=WIPE SAMPLES

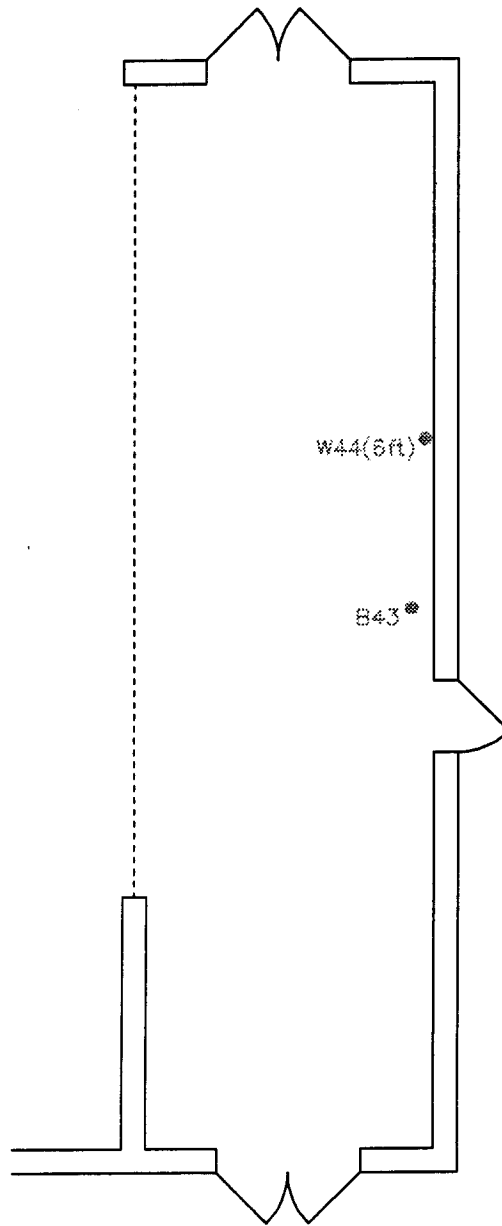
figure 2.17
 SAMPLE LOCATIONS
 TRANSFORMER ROOM 4
 GMPT SAGINAW MALLEABLE IRON PLANT
 Saginaw, Michigan

CRA



SCALE: 1/8" = 1'-0"

CEILING HEIGHT = 15'



SAMPLE ID	CONCENTRATION
W44	<10µg/100cm ²
B43	<0.33mg/kg

NOTES: SAMPLES TAKEN NOV.11/93
 B=BULK SAMPLES
 W=WIPE SAMPLES

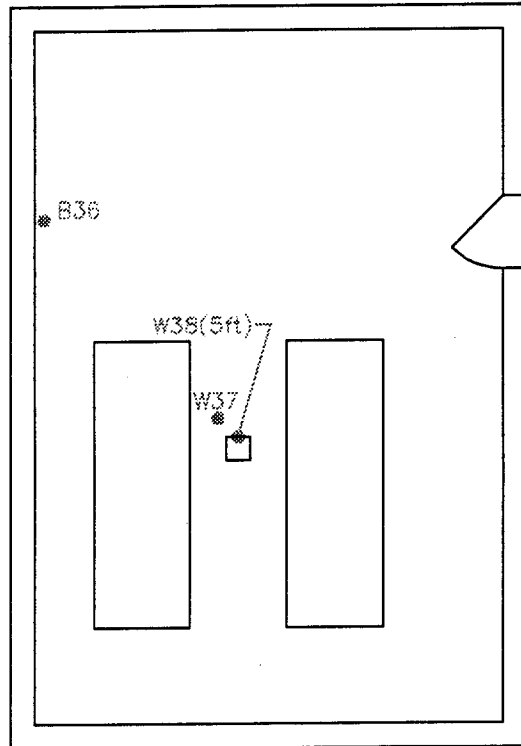
figure 2.18
 SAMPLE LOCATIONS
 HALLWAY 4
 GMPT SAGINAW MALLEABLE IRON PLANT
 Saginaw, Michigan

CRA



SCALE: 1/8" = 1'-0"

CEILING HEIGHT = 15'



SAMPLE ID	CONCENTRATION
B36	<0.33mg/kg
W37	<10 μ g/100cm ²
W38	<10 μ g/100cm ²

NOTES: SAMPLES TAKEN NOV.11/93
 B=BULK SAMPLES
 W=WIPE SAMPLES

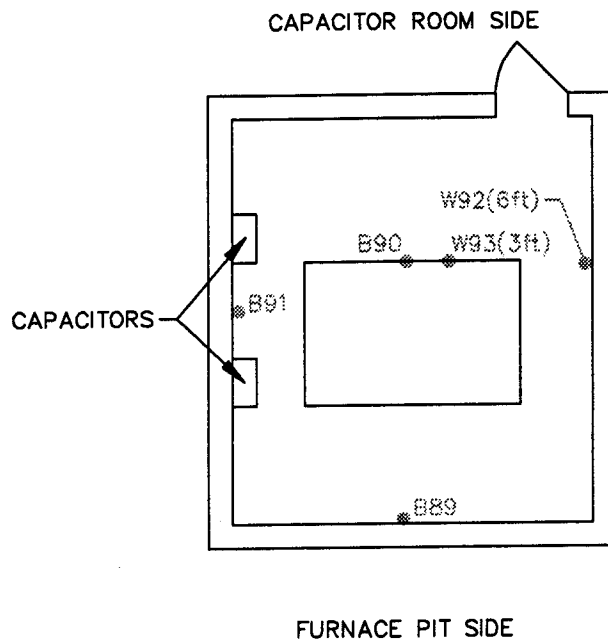
figure 2.19
 SAMPLE LOCATIONS
 GENERATOR ROOM 4
 GMPT SAGINAW MALLEABLE IRON PLANT
 Saginaw, Michigan

CRA



SCALE: 1/8" = 1'-0"

CEILING HEIGHT = 8'



SAMPLE ID	CONCENTRATION
B89	<0.33mg/kg
B90	<3.3mg/kg
B91	<0.89mg/kg
W92	<10µg/100cm ²
W93	<10µg/100cm ²

NOTES: SAMPLES TAKEN NOV.11/93
 B=BULK SAMPLES
 W=WIPE SAMPLES

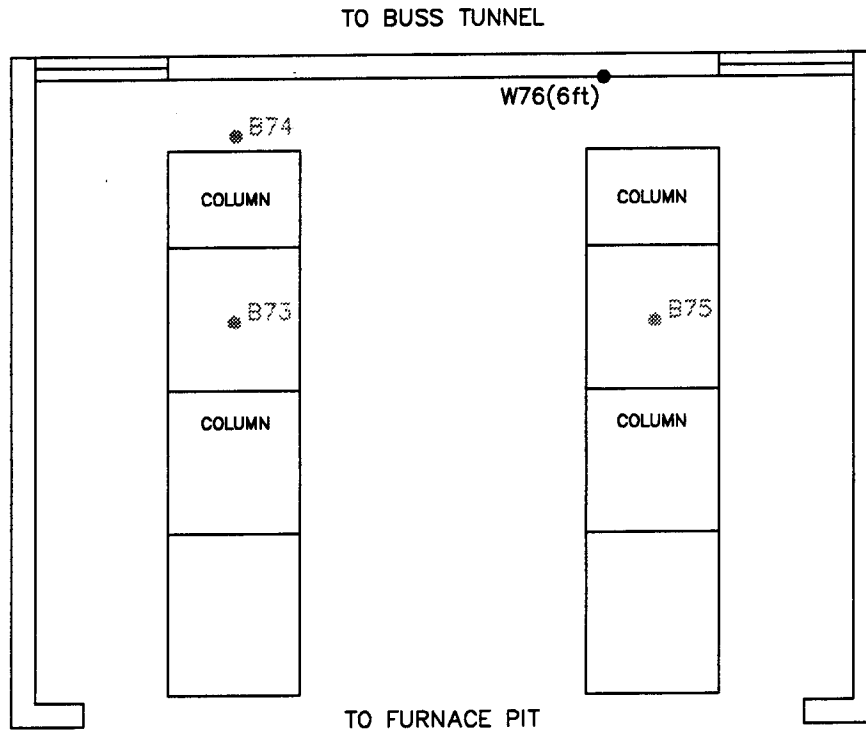
figure 2.20
 SAMPLE LOCATIONS
 HYDRAULIC ROOM 4
 GMPT SAGINAW MALLEABLE IRON PLANT
 Saginaw, Michigan

CRA



SCALE: 1/8" = 1'-0"

CEILING HEIGHT = 12'

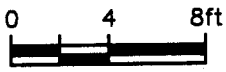


SAMPLE ID	CONCENTRATION
B73	<0.53mg/kg
B74	<0.33mg/kg
B75	<0.33mg/kg
W76	80µg/100cm ²

NOTES: SAMPLES TAKEN NOV.11/93
 B=BULK SAMPLES
 W=WIPE SAMPLES

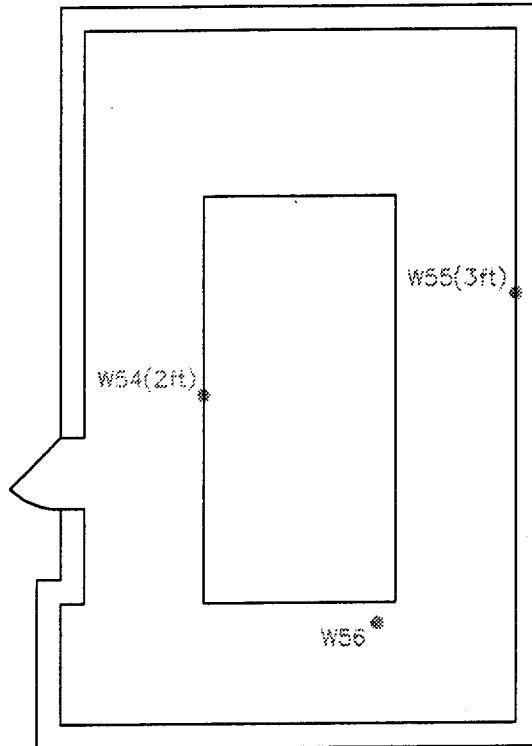
figure 2.21
 SAMPLE LOCATIONS
 BUSS TUNNEL TO PIT 4
 GMPT SAGINAW MALLEABLE IRON PLANT
 Saginaw, Michigan

CRA



SCALE: 1/8" = 1'-0"

CEILING HEIGHT = 15'



SAMPLE ID	CONCENTRATION
W54	<10µg/100cm ²
W55	<10µg/100cm ²
W56	<10µg/100cm ²

NOTES: SAMPLES TAKEN NOV.11/93
W=WIPE SAMPLES

figure 2.22

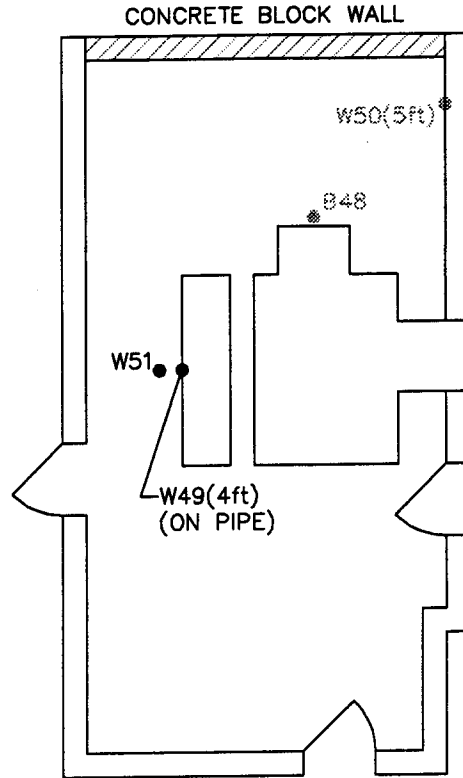
SAMPLE LOCATIONS
CONTROL ROOM 5
GMPT SAGINAW MALLEABLE IRON PLANT
Saginaw, Michigan

CRA



SCALE: 1/8" = 1'-0"

CEILING HEIGHT = 20'

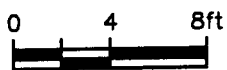


SAMPLE ID	CONCENTRATION
B48	<0.33mg/kg
W49	840µg/100cm ²
W50	<10µg/100cm ²
W51	69µg/100cm ²

NOTES: SAMPLES TAKEN NOV.11/93
 B=BULK SAMPLES
 W=WIPE SAMPLES

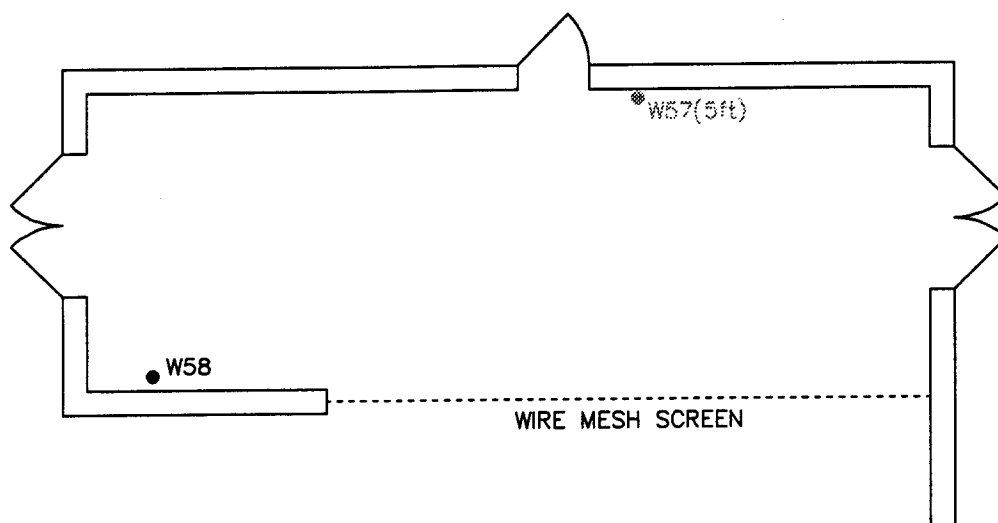
figure 2.23
 SAMPLE LOCATIONS
 TRANSFORMER ROOM 5
 GMPT SAGINAW MALLEABLE IRON PLANT
 Saginaw, Michigan

CRA



SCALE: 1/8" = 1'-0"

CEILING HEIGHT = 15'

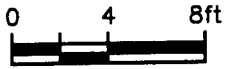


SAMPLE ID	CONCENTRATION
W57	<10 μ g/100cm ²
W58	13 μ g/100cm ²

NOTES: SAMPLES TAKEN NOV.11/93
W=WIPE SAMPLES

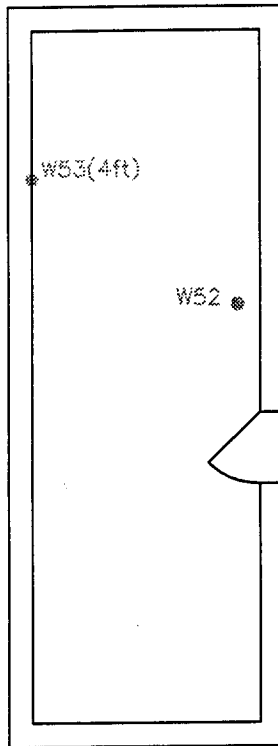
figure 2.24
SAMPLE LOCATIONS
HALLWAY 5
GMPT SAGINAW MALLEABLE IRON PLANT
Saginaw, Michigan

CRA



SCALE: 1/8" = 1'-0"

CEILING HEIGHT = 15'



SAMPLE ID	CONCENTRATION
W52	<10 μ g/100cm ²
W53	<10 μ g/100cm ²

NOTES: SAMPLES TAKEN NOV.11/93
W=WIPE SAMPLES

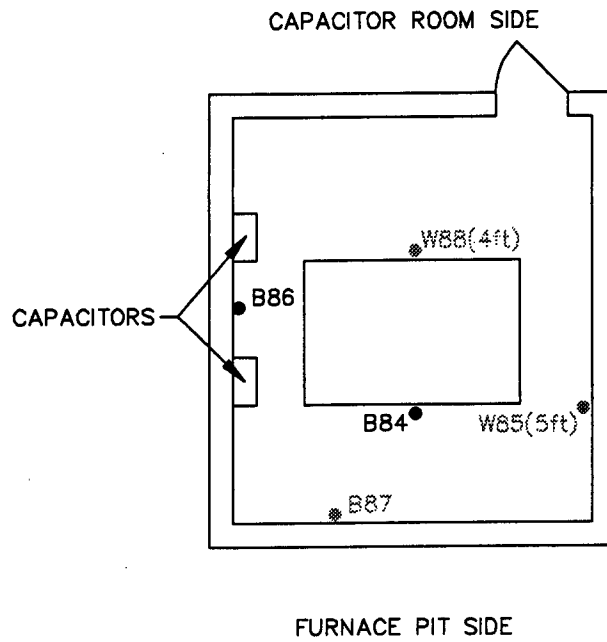
figure 2.25
SAMPLE LOCATIONS
GENERATOR ROOM 5
GMPT SAGINAW MALLEABLE IRON PLANT
Saginaw, Michigan

CRA



SCALE: 1/8" = 1'-0"

CEILING HEIGHT = 8'



SAMPLE ID	CONCENTRATION
B84*	1.6mg/kg
W85	<10µg/100cm ²
B86*	1.4mg/kg
B87	<0.36mg/kg
W88	<10µg/100cm ²

NOTES: SAMPLES TAKEN NOV.11/93

B=BULK SAMPLES

W=WIPE SAMPLES

* = AROCLOR 1254

figure 2.26

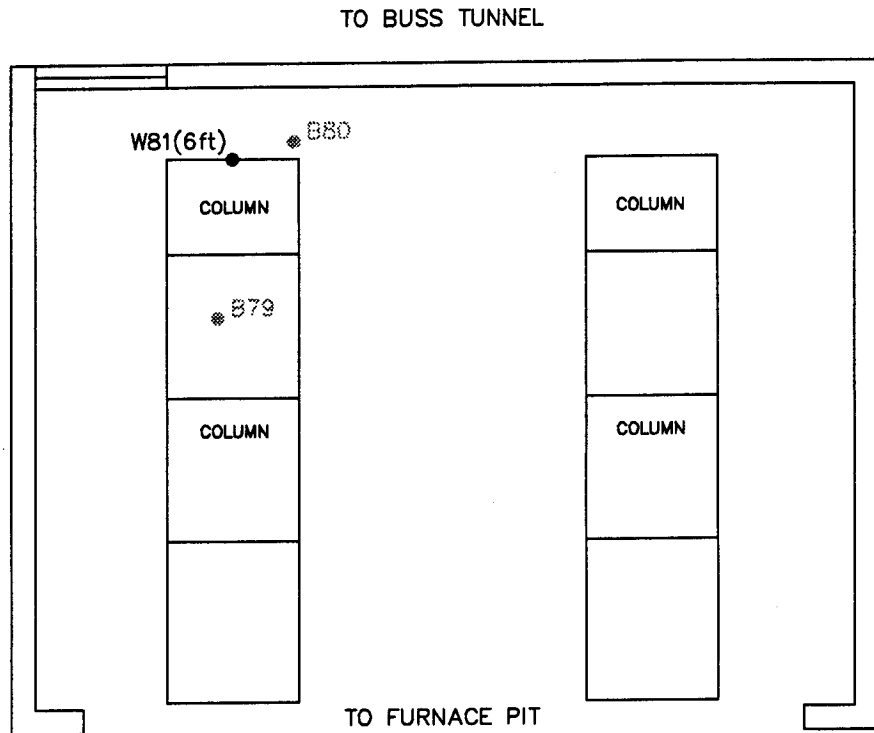
SAMPLE LOCATIONS
HYDRAULIC ROOM 5
GMPT SAGINAW MALLEABLE IRON PLANT
Saginaw, Michigan

CRA



SCALE: 1/8" = 1'-0"

CEILING HEIGHT = 12'

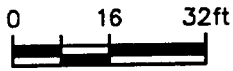


SAMPLE ID	CONCENTRATION
B79	<0.5mg/kg
B80	<0.33mg/kg
W81	26µg/100cm ²

NOTES: SAMPLES TAKEN NOV.11/93
 B=BULK SAMPLES
 W=WIPE SAMPLES

figure 2.27
 SAMPLE LOCATIONS
 BUSS TUNNEL TO PIT 5
 GMPT SAGINAW MALLEABLE IRON PLANT
 Saginaw, Michigan

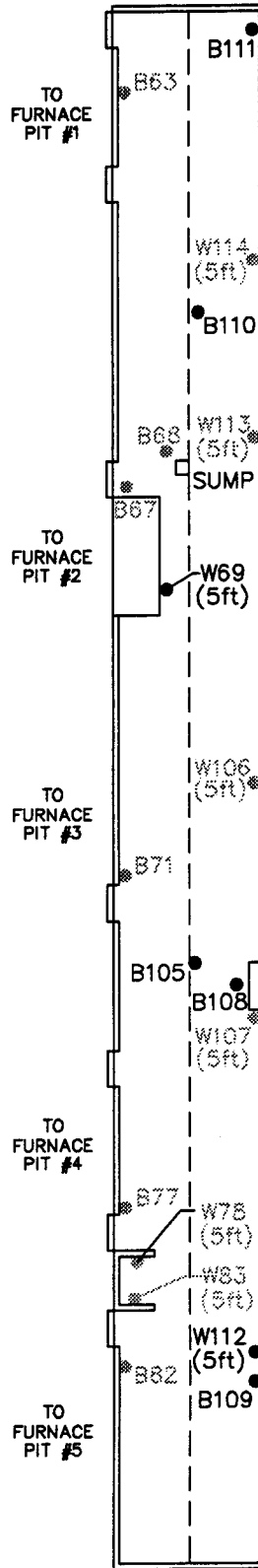
CRA



SCALE: 1/8" = 4'-0"

METAL CEILING HEIGHT = 7'
 CONCRETE CEILING HEIGHT = 14'

SAMPLE ID	CONCENTRATION
B63	<0.33mg/kg
B67	<0.33mg/kg
B68	<0.33mg/kg
W69	31µg/100cm ²
B71	<0.33mg/kg
B77	<0.43mg/kg
W78	<10µg/100cm ²
B82	<0.33mg/kg
W83	<10µg/100cm ²
B105	190mg/kg
W106	<10µg/100cm ²
W107	<10µg/100cm ²
B108	36mg/kg
B109	510mg/kg
B110	330mg/kg
B111	570mg/kg
W112	19µg/100cm ²
W113	<10µg/100cm ²
W114	<10µg/100cm ²

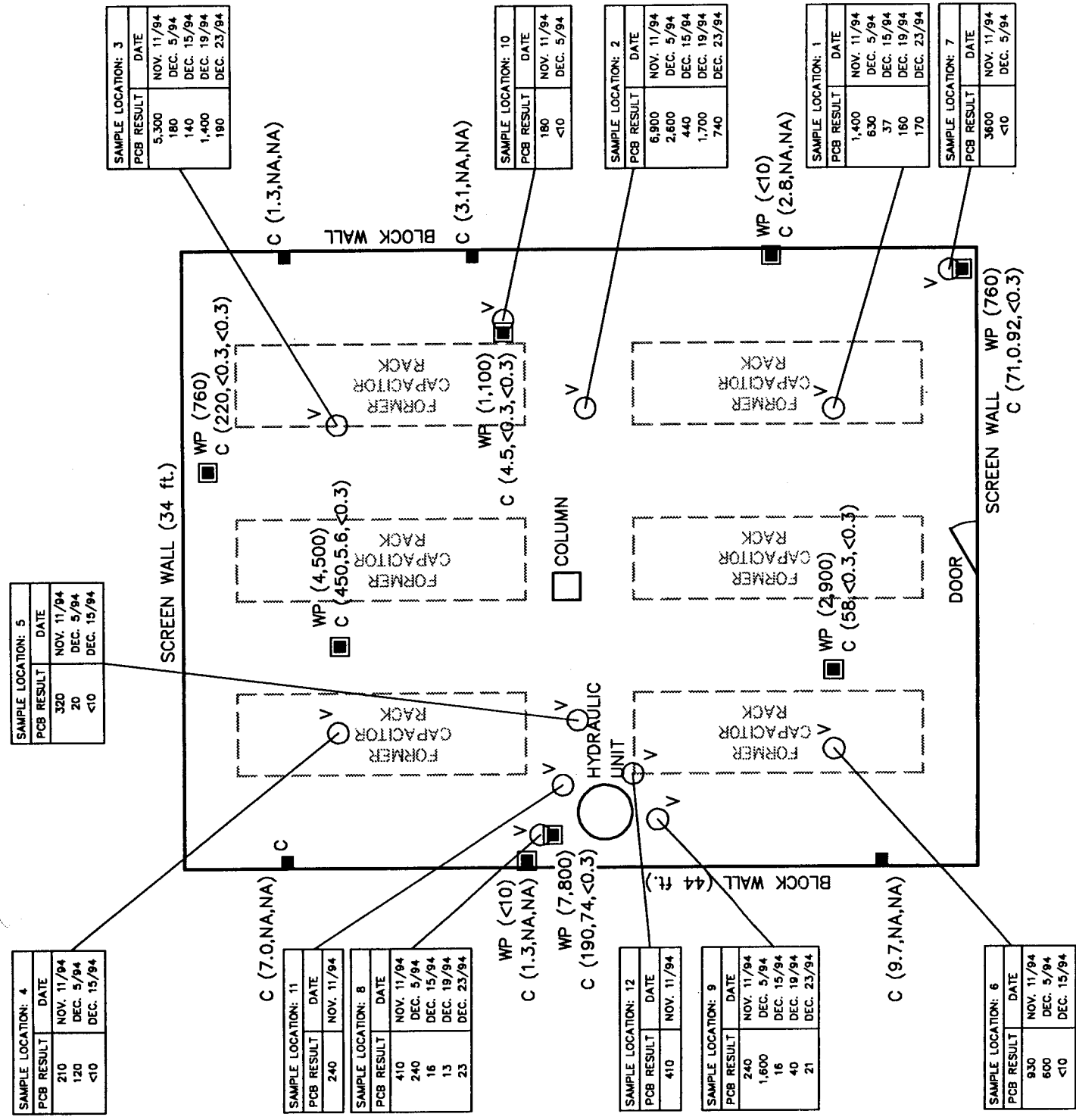


NOTES: SAMPLES TAKEN NOV.11/93
 B=BULK SAMPLES
 W=WIPE SAMPLES
 VALUES FROM CORE SAMPLES
 ARE AROCLOR 1242

figure 2.28
 SAMPLE LOCATIONS
 BUSS TUNNEL
 GMPT SAGINAW MALLEABLE IRON PLANT
 Saginaw, Michigan

CRA

0 4 8ft
 SCALE: 1/8" = 1'-0"
 CEILING HEIGHT = 15'



LEGEND

- WP WIPE SAMPLE - MAR. 23, 1994
(PCB RESULTS - ug/100cm²)
- C CORE SAMPLES - MAR. 23, 1994
(PCB RESULTS - mg/kg - 0-1/2, 1"-5", 5"-10")
- V VERIFICATION WIPE SAMPLE
(PCB RESULTS - ug/100cm²)

figure 3.1
 SAMPLE LOCATIONS AND ANALYTICAL RESULTS
 FOR CAPACITOR ROOM 2
 GMPT SAGINAW MALLEABLE IRON PLANT
 Saginaw, Michigan

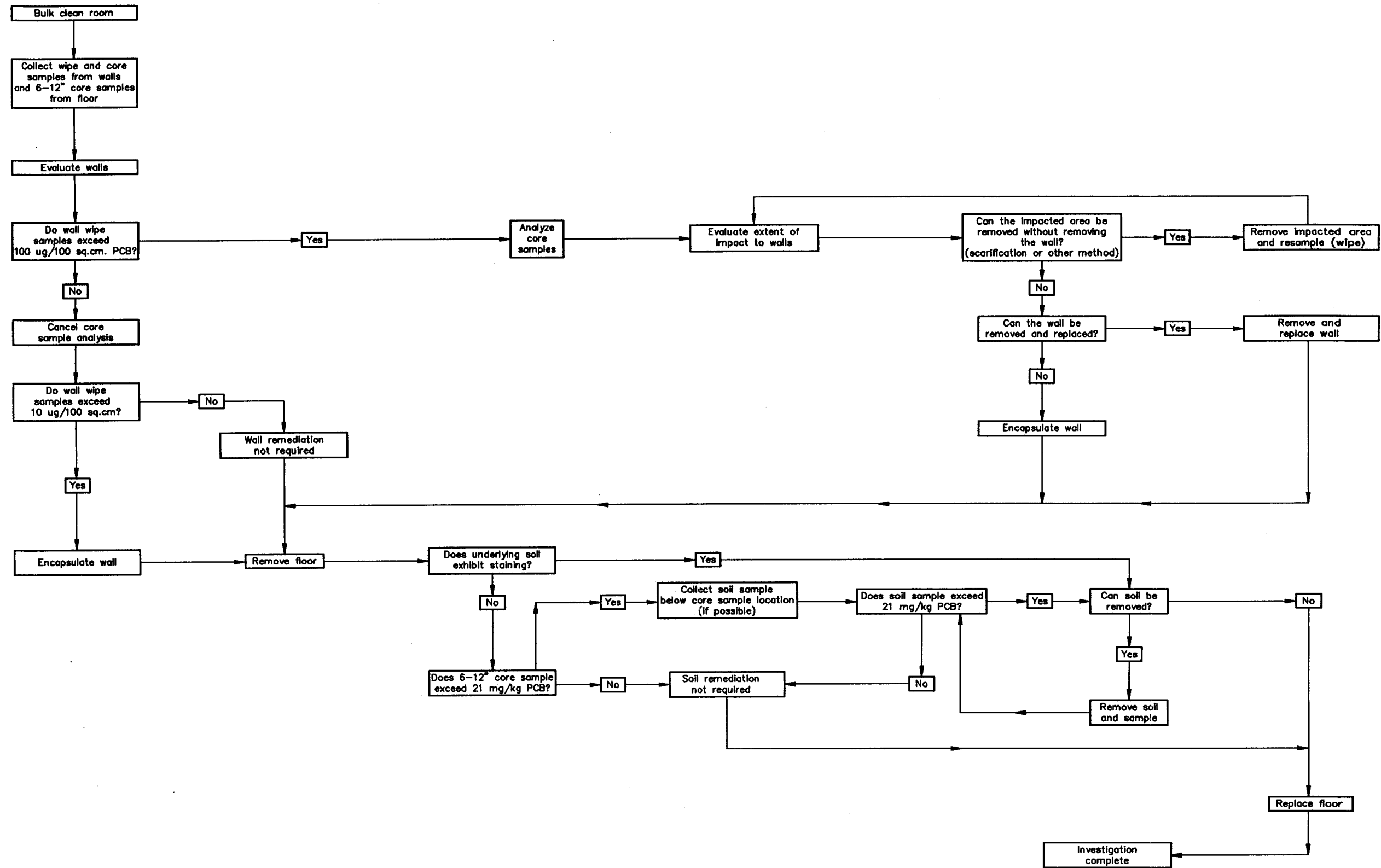
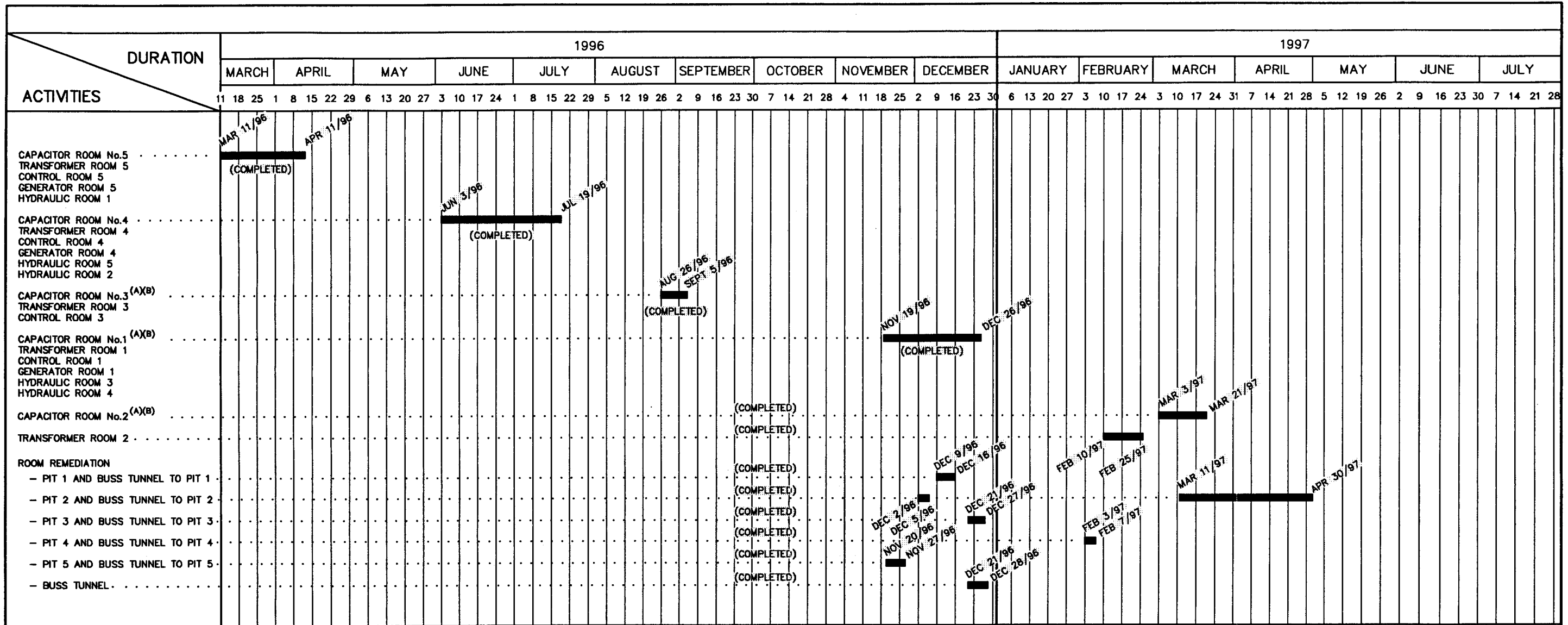


figure 4.1
 REMEDIATION ACTIVITY FLOW CHART – CAPACITOR ROOMS
 GMPT SAGINAW MALLEABLE IRON PLANT
 Saginaw, Michigan

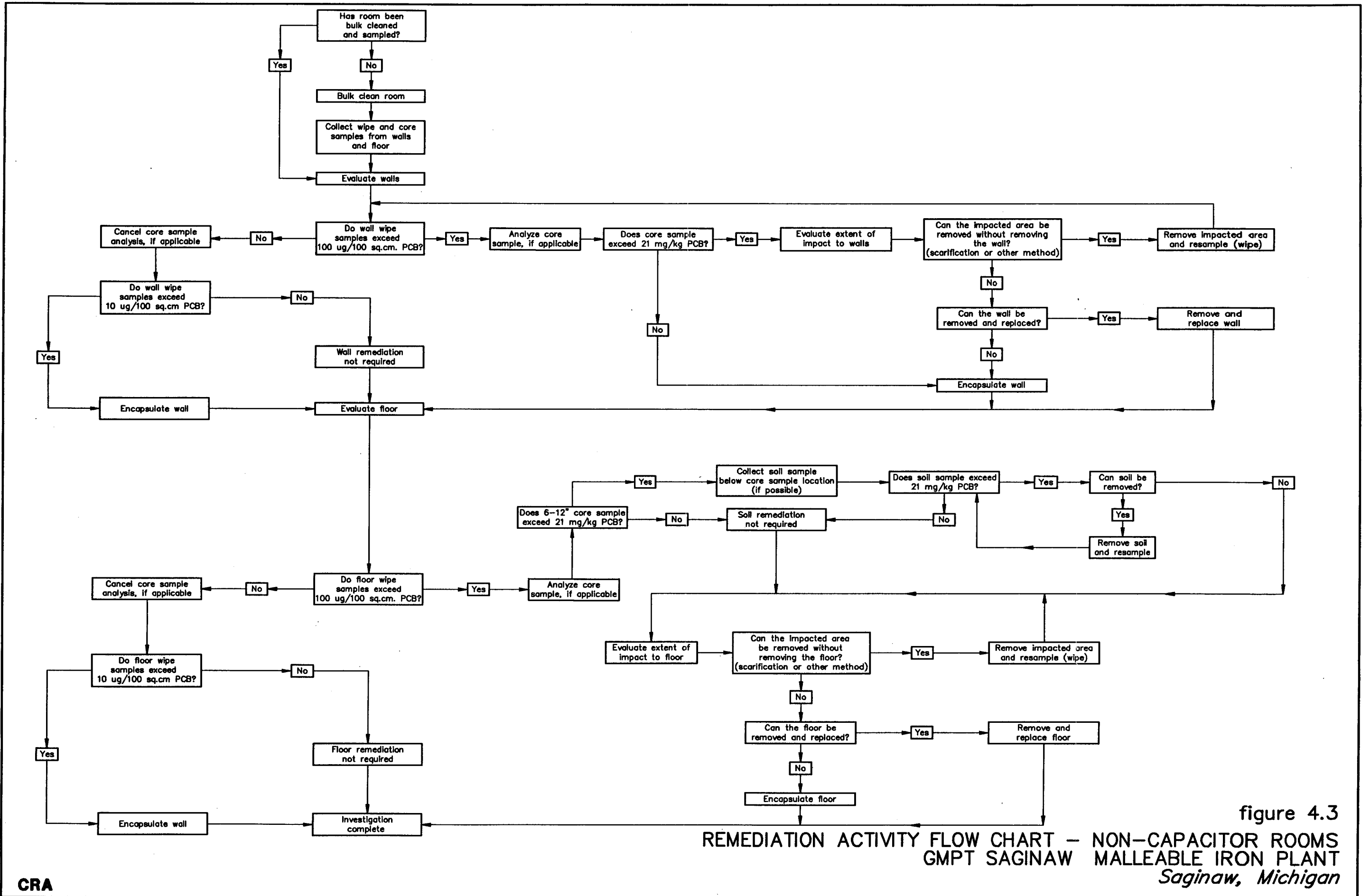


LEGEND

- CONTINUOUS ACTIVITY
 CONSISTING OF THE FOLLOWING TASKS:
 - ROOM CLEANING
 - CONCRETE REHABILITATION/REPLACEMENT
 - SAMPLING AND ANALYSIS

- NOTES: (A) FLOOR WILL BE REMOVED AND REPLACED.
 (B) ORDER OF WORK WILL DEPEND ON GM PLANT PRODUCTION SCHEDULE.
 (C) ROOMS ASSOCIATED WITH A FURNACE (TRANSFORMER, CONTROL, GENERATOR, HYDRAULIC) MUST BE COMPLETED WITH ASSOCIATED CAPACITOR ROOM.

figure 4.2
 PROJECT SCHEDULE
 GMPT SAGINAW MALLEABLE IRON PLANT
 Saginaw, Michigan

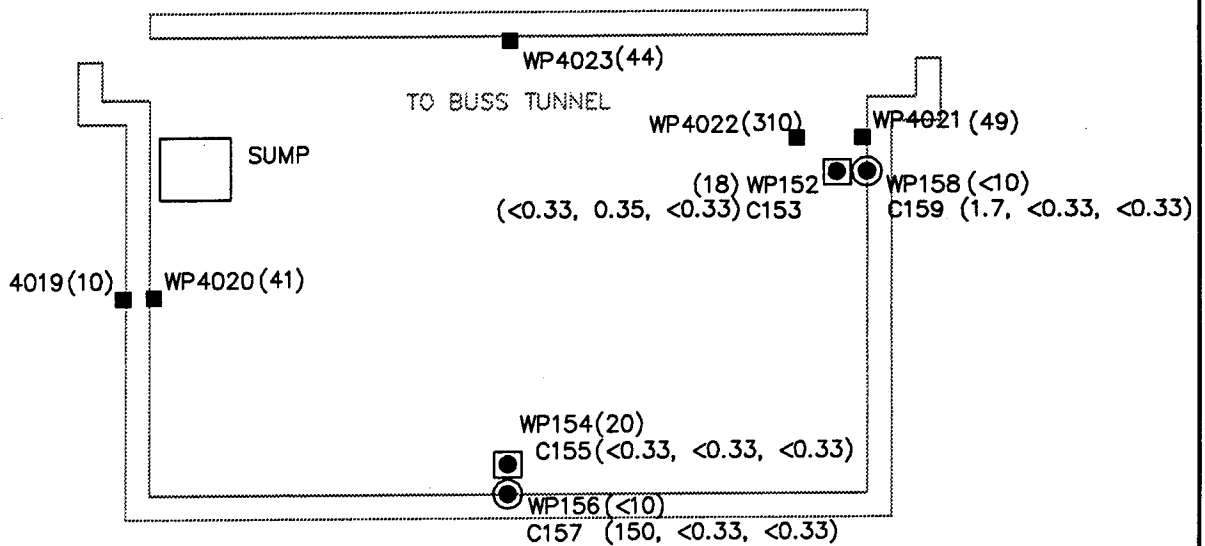


REMEDIATION ACTIVITY FLOW CHART - NON-CAPACITOR ROOMS
 GMPT SAGINAW MALLEABLE IRON PLANT
 Saginaw, Michigan



SCALE: 1/8" = 1'-0"

CEILING HEIGHT = 12'



LEGEND

- WP4020 WIPE SAMPLES (PCB RESULTS- $\mu\text{g}/100\text{cm}^2$, DECEMBER 16/96)
- WP140 WIPE SAMPLES (PCB RESULTS- $\text{g}/100\text{cm}^2$, JULY 8/94, JULY 9/94)
- C157 WALL CORE SAMPLES (PCB RESULTS- mg/kg 0-1/2", 1/2"-5", 5"-10", JULY 9/94)
- C155 FLOOR CORE SAMPLES (PCB RESULTS- mg/kg BRICK, BRICK-1/2", 1/2"-10", JULY 8/94)

figure 5.1

**SAMPLE LOCATIONS
PIT 1**

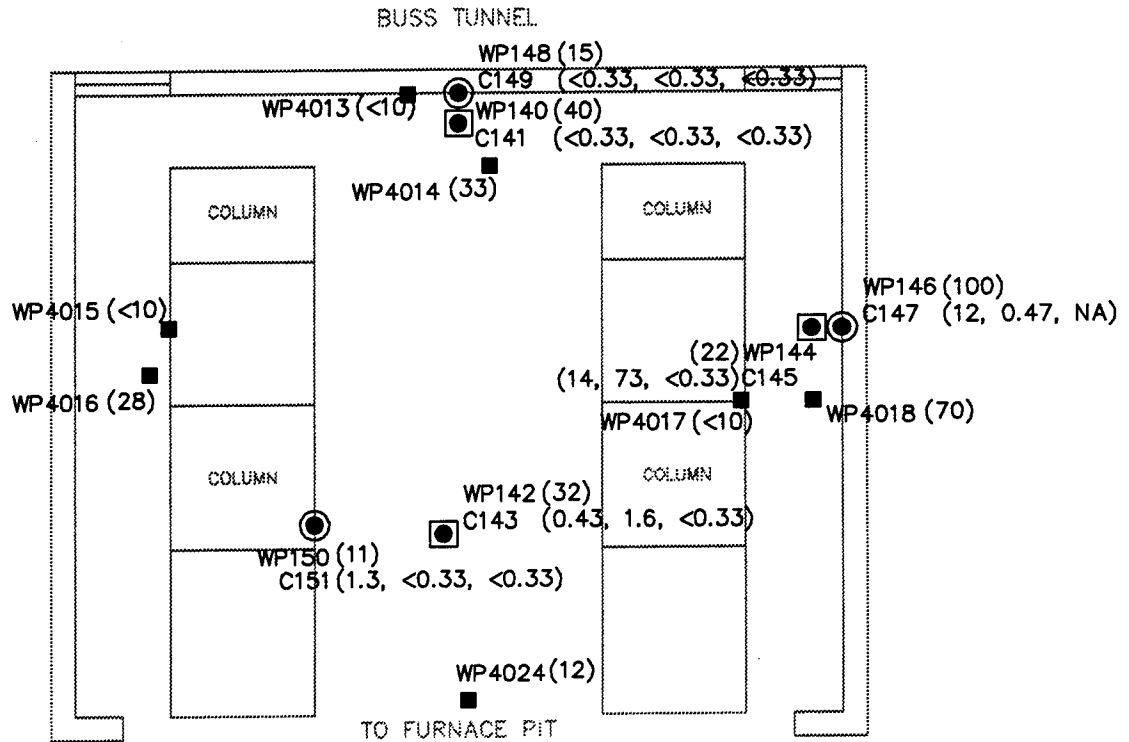
**GMPT SAGINAW MALLEABLE IRON PLANT
Saginaw, Michigan**

CRA



SCALE: 1/8" = 1'-0"

CEILING HEIGHT = 12'

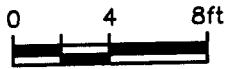


LEGEND

- WP4024 WIPE SAMPLES (PCB RESULTS— $\mu\text{g}/100\text{cm}^2$, DECEMBER 16/96)
- WP140 WIPE SAMPLES (PCB RESULTS— $\mu\text{g}/100\text{cm}^2$, JULY 9/94)
- C193 WALL CORE SAMPLES (PCB RESULTS— mg/kg 0—1/2", 1/2"—5", 5"—10", JULY 8/94)
- C195 FLOOR CORE SAMPLES (PCB RESULTS— mg/kg 0—1/2", 1/2"—5", 5"—10", JULY 8/94)
- NA NOT AVAILABLE

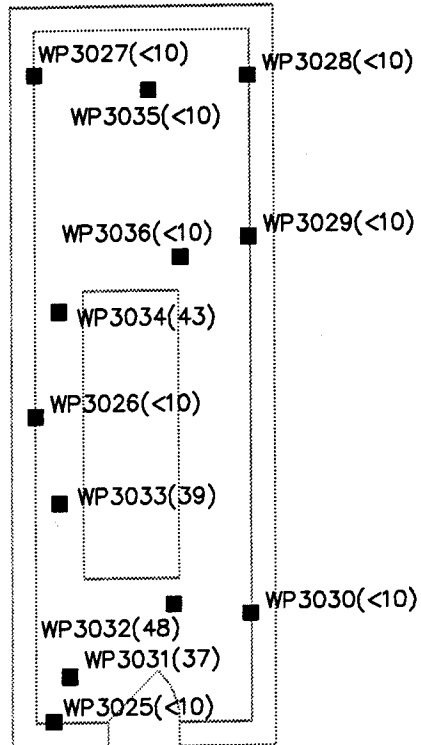
figure 5.2
SAMPLE LOCATIONS
BUSS TUNNEL TO PIT 1
GMPT SAGINAW MALLEABLE IRON PLANT
Saginaw, Michigan

CRA



SCALE: 1/8" = 1'-0"

CEILING HEIGHT = 15'



LEGEND

■ WP3025 WIPE SAMPLES (PCB RESULTS- $\mu\text{g}/100\text{cm}^2$)

NOTES: SAMPLES TAKEN NOVEMBER 26/96

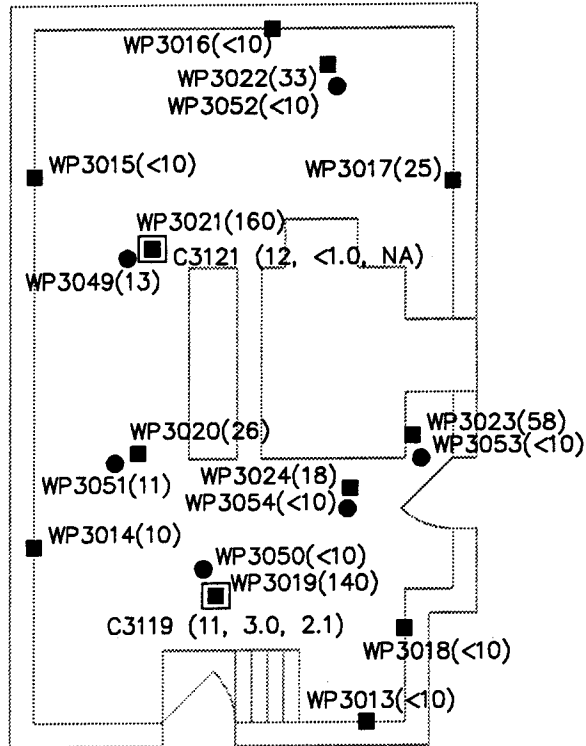
figure 5.3
 SAMPLE LOCATIONS
 GENERATOR ROOM 1
 GMPT SAGINAW MALLEABLE IRON PLANT
 Saginaw, Michigan

CRA



SCALE: 1/8" = 1'-0"

CEILING HEIGHT = 20'



LEGEND

- WP3017 WIPE SAMPLES (PCB RESULTS— $\mu\text{g}/100\text{cm}^2$, NOVEMBER 26/96)
- C3119 FLOOR CORE SAMPLES (PCB RESULTS—mg/kg 0-1/2", 1/2"-5", 5"-10", NOVEMBER 26/96)
- WP3050 VERIFICATION WIPE SAMPLES (PCB RESULTS— $\mu\text{g}/100\text{cm}^2$, DECEMBER 26/96)
- NA NOT AVAILABLE

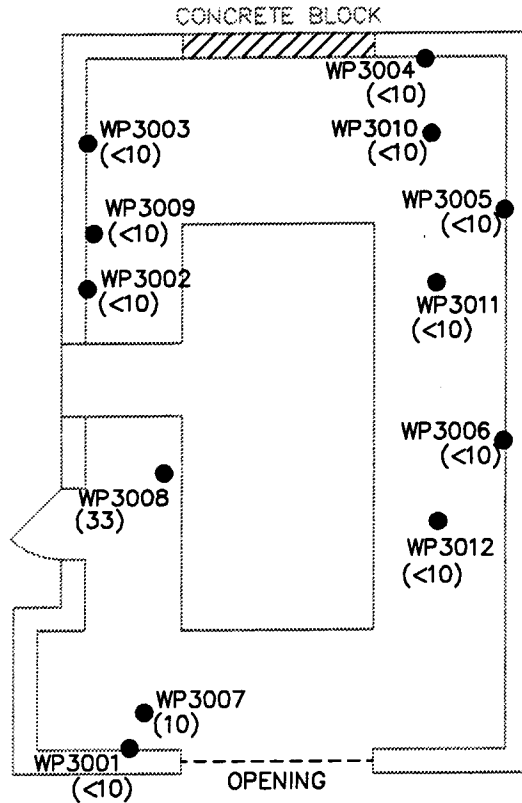
figure 5.4
SAMPLE LOCATIONS
TRANSFORMER ROOM 1
GMPT SAGINAW MALLEABLE IRON PLANT
Saginaw, Michigan

CRA



SCALE: 1/8" = 1'-0"

CEILING HEIGHT = 15'



LEGEND

● WP3001 WPE SAMPLES (PCB RESULTS- $\mu\text{g}/100\text{cm}^2$)

NOTE: SAMPLES TAKEN NOV.26/96

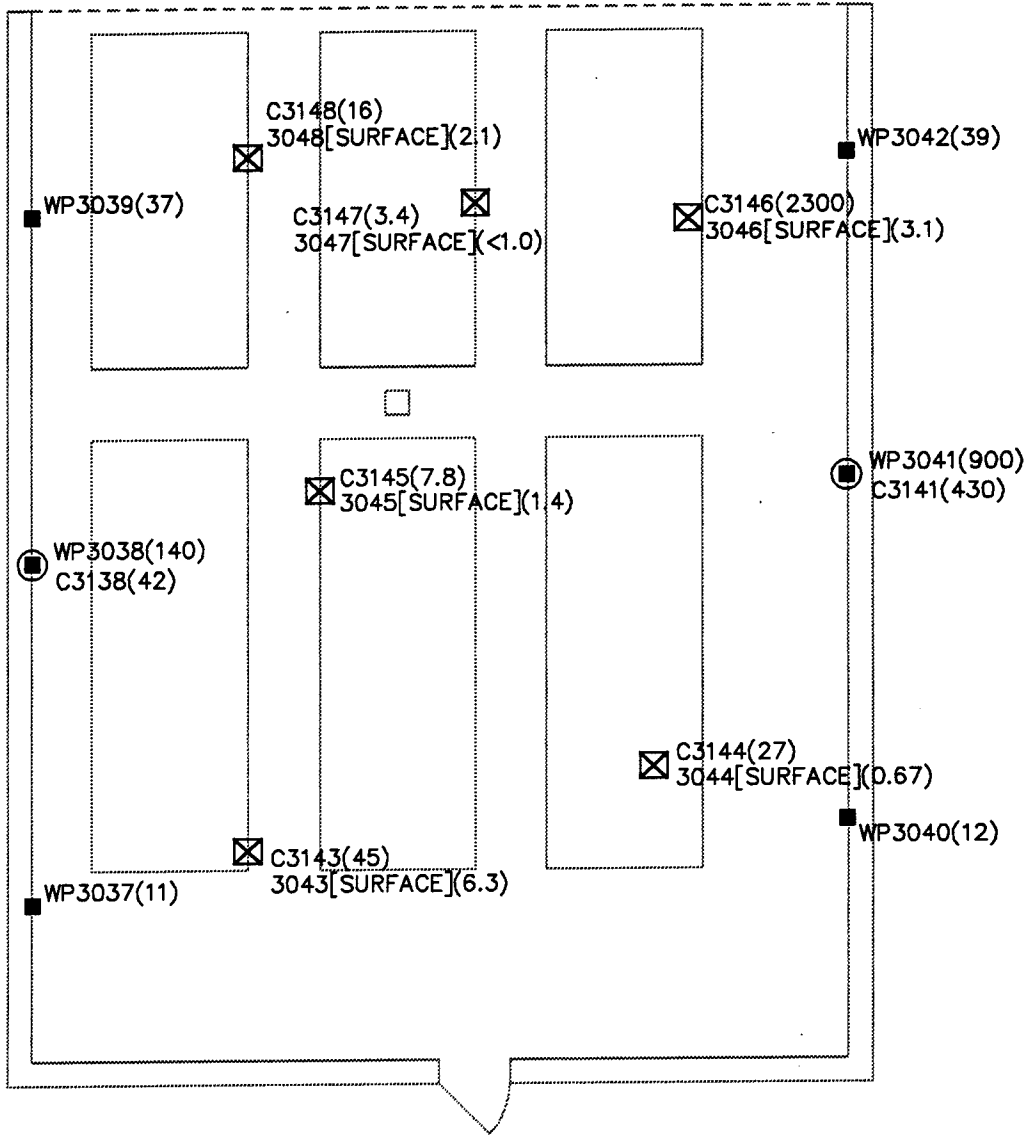
figure 5.5
 SAMPLE LOCATIONS
 CONTROL ROOM 1
 GMPT SAGINAW MALLEABLE IRON PLANT
 Saginaw, Michigan

CRA



SCALE: 1/8" = 1'-0"

CEILING HEIGHT = 15'



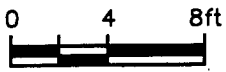
LEGEND

- WP3037 WIPE SAMPLES (PCB RESULTS- $\mu\text{g}/100\text{cm}^2$)
- C3138 WALL CORE SAMPLES (PCB RESULTS-mg/kg 0"-1/2")
- C3143 FLOOR CORE SAMPLES (PCB RESULTS-mg/kg 5"-10")
- ⊗ 3043 SOIL SAMPLES [DEPTH OF SAMPLE] (PCB RESULTS-mg/kg)

NOTES: SAMPLES TAKEN NOVEMBER 27/96

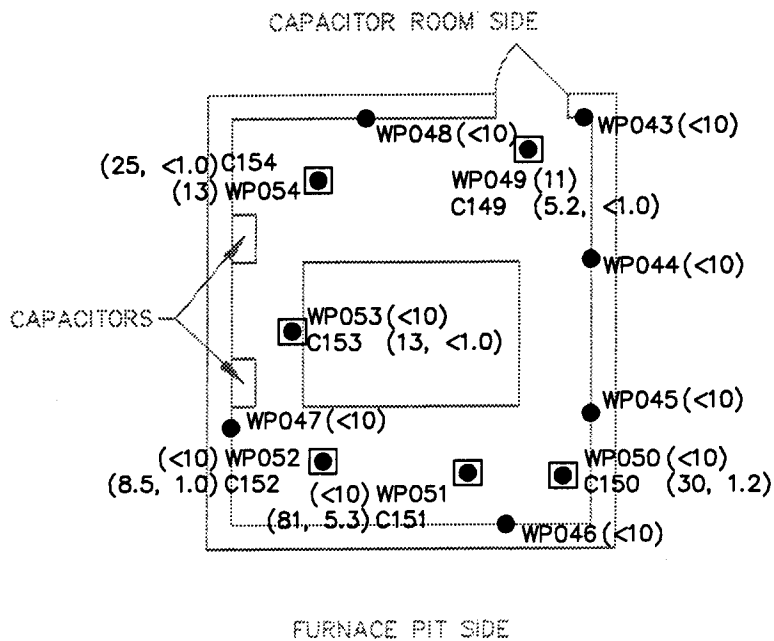
figure 5.6
SAMPLE LOCATIONS
CAPACITOR ROOM 1
GMPT SAGINAW MALLEABLE IRON PLANT
Saginaw, Michigan

CRA



SCALE: 1/8" = 1'-0"

CEILING HEIGHT = 8'



LEGEND

- WP140 WIPE SAMPLES (PCB RESULTS—µg/100cm²)
- C195 FLOOR CORE SAMPLES (PCB RESULTS—mg/kg 0-1/2", 1/2"-3")

NOTES: SAMPLES TAKEN MAR 18/96

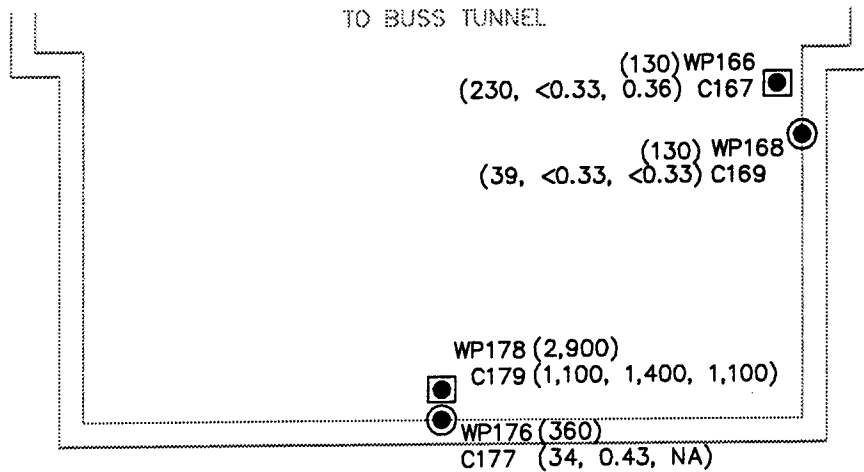
figure 5.7
SAMPLE LOCATIONS
HYDRAULIC ROOM 1
GMPT SAGINAW MALLEABLE IRON PLANT
Saginaw, Michigan

CRA



SCALE: 1/8" = 1'-0"

CEILING HEIGHT = 18'



LEGEND

- WP140 WIPE SAMPLES (PCB RESULTS— $\mu\text{g}/100\text{cm}^2$)
- C177 WALL CORE SAMPLES (PCB RESULTS— mg/kg 0—1/2", 1/2"—5", 5"—10")
- C179 FLOOR CORE SAMPLES (PCB RESULTS— mg/kg BRICK, BRICK—1/2", 1/2"—10")
- NA NOT AVAILABLE

NOTES: SAMPLES TAKEN JULY 9/94

figure 6.1

SAMPLE LOCATIONS

PIT 2

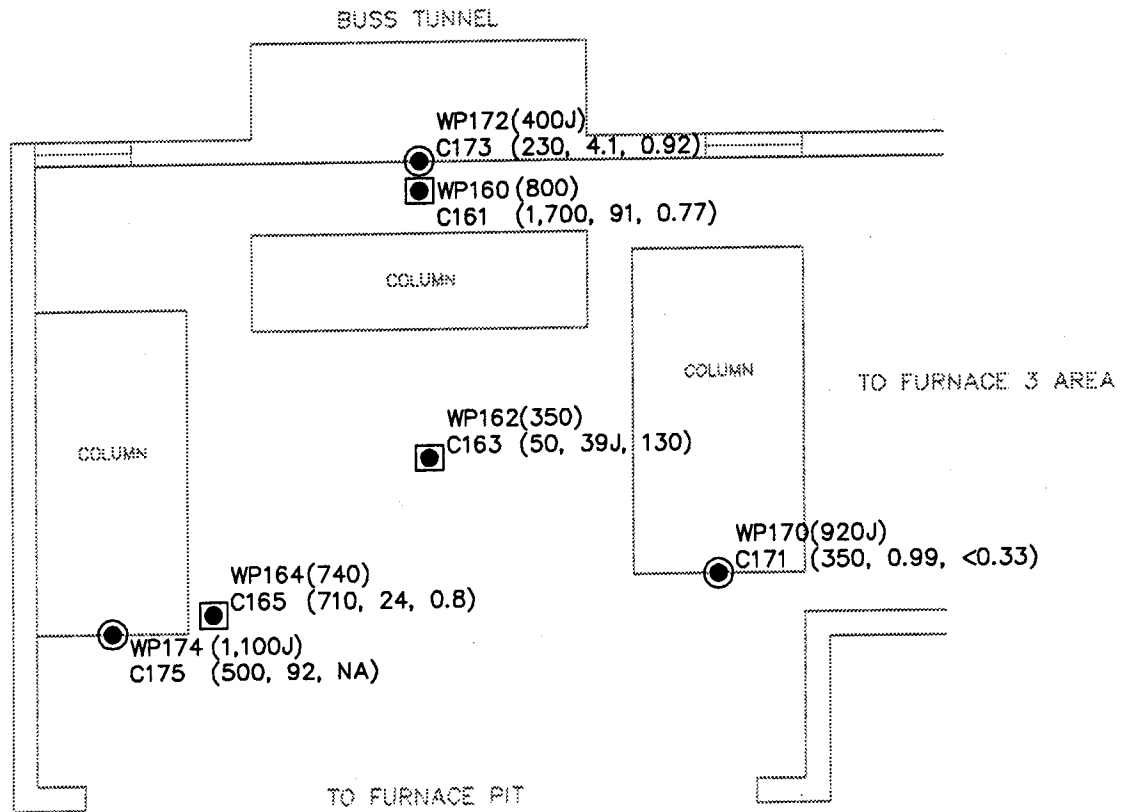
GMPT SAGINAW MALLEABLE IRON PLANT
Saginaw, Michigan

CRA



SCALE: 1/8" = 1'-0"

CEILING HEIGHT = 18'



LEGEND

- WP140 WIPE SAMPLES (PCB RESULTS- $\mu\text{g}/100\text{cm}^2$)
- C193 WALL CORE SAMPLES (PCB RESULTS-mg/kg 0-1/2", 1/2"-5", 5"-10")
- C195 FLOOR CORE SAMPLES (PCB RESULTS-mg/kg 0-1/2", 1/2"-5", 5"-10")
- NA NOT AVAILABLE
- J ESTIMATED VALUE

NOTES: SAMPLES TAKEN JULY 9/94

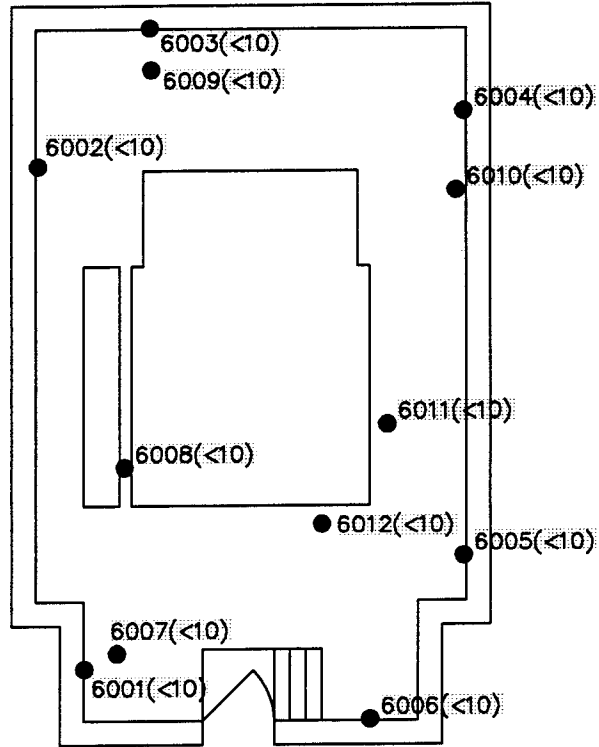
figure 6.2
SAMPLE LOCATIONS
BUSS TUNNEL TO PIT 2
GMPT SAGINAW MALLEABLE IRON PLANT
Saginaw, Michigan

CRA



SCALE: 1/8" = 1'-0"

CEILING HEIGHT = 20'



LEGEND

● 6001 WIPE SAMPLES (PCB RESULTS— $\mu\text{g}/100\text{cm}^2$, JULY 9/94)

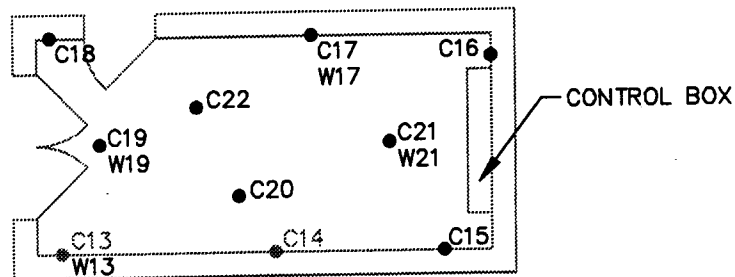
NOTES: SAMPLES TAKEN FEB. 25/97

figure 6.3
SAMPLE LOCATIONS
TRANSFORMER ROOM 2
GMPT SAGINAW MALLEABLE IRON PLANT
Saginaw, Michigan



SCALE: 1/8" = 1'-0"

CEILING HEIGHT = 15'

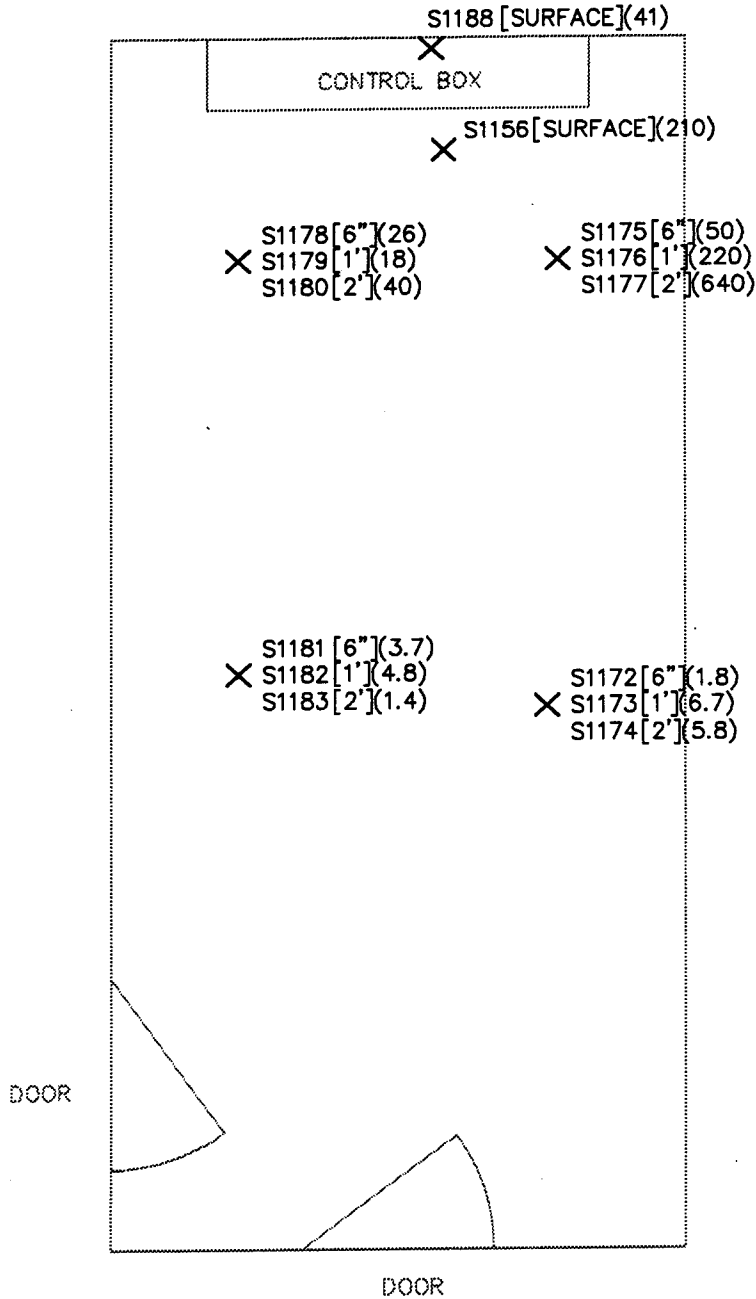


SAMPLE ID	CONCENTRATION
W13	<10 μ g/100cm ²
C13	<0.33mg/kg (0-1/2")
C14	<0.33mg/kg (0-1/2")
C15	1.0mg/kg (0-1/2")
C16	0.5mg/kg (0-1/2")
W17	13 μ g/100cm ²
C17	<0.33mg/kg (0-1/2")
C18	2.6mg/kg (0-1/2")
W19	950 μ g/100cm ²
C19	100,<0.33,<0.33mg/kg (0-1/2", 1/2"-5", 5-10)
C20	630,310,85mg/kg (0-1/2", 1/2"-5", 5-10")
W21	490 μ g/100cm ²
C21	150,<0.33,<0.33mg/kg (0-1/2", 1/2"-5", 5-10")
C22	160,350,<0.3mg/kg (0-1/2", 1/2"-5", 5-10")

NOTES: SAMPLES TAKEN MARCH 23/94
 W=WIPE
 C=CORE
 (VALUES FROM CORE SAMPLES
 ARE AROCLOR 1242)

figure 6.4

SAMPLE LOCATIONS
 HYDRAULIC ROOM 2
 GMPT SAGINAW MALLEABLE IRON PLANT
 Saginaw, Michigan



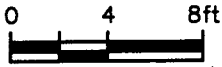
LEGEND

X SOIL SAMPLES [DEPTH OF SAMPLE] (PCB RESULTS—mg/kg)

NOTES: SAMPLES TAKEN JUNE 7/96,
JUNE 20/96 AND JULY 15/96

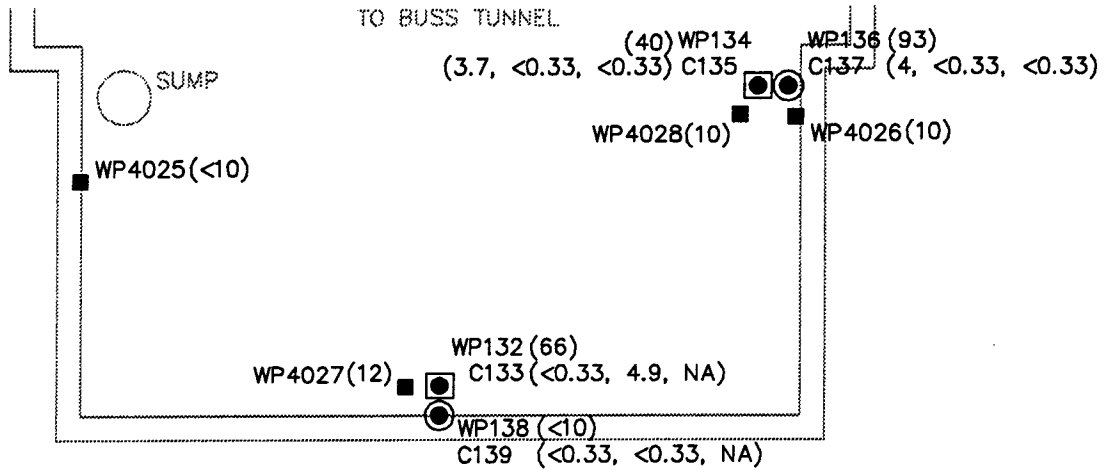
figure 6.5

SOIL SAMPLE LOCATIONS
HYDRAULIC ROOM 2
GMPT SAGINAW MALLEABLE IRON PLANT
Saginaw, Michigan



SCALE: 1/8" = 1'-0"

CEILING HEIGHT = 12'

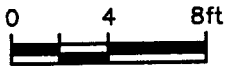


LEGEND

- WP4027 WIPE SAMPLES (PCB RESULTS- $\mu\text{g}/100\text{cm}^2$, DECEMBER 27/96)
- WP132 WIPE SAMPLES (PCB RESULTS- $\mu\text{g}/100\text{cm}^2$, JULY 8/94)
- C139 WALL CORE SAMPLES (PCB RESULTS-mg/kg 0-1/2", 1/2"-5", 5"-10", JULY 8/94)
- C133 FLOOR CORE SAMPLES (PCB RESULTS-mg/kg BRICK, BRICK-1/2", 1/2"-10", JULY 8/94)
- NA NOT AVAILABLE

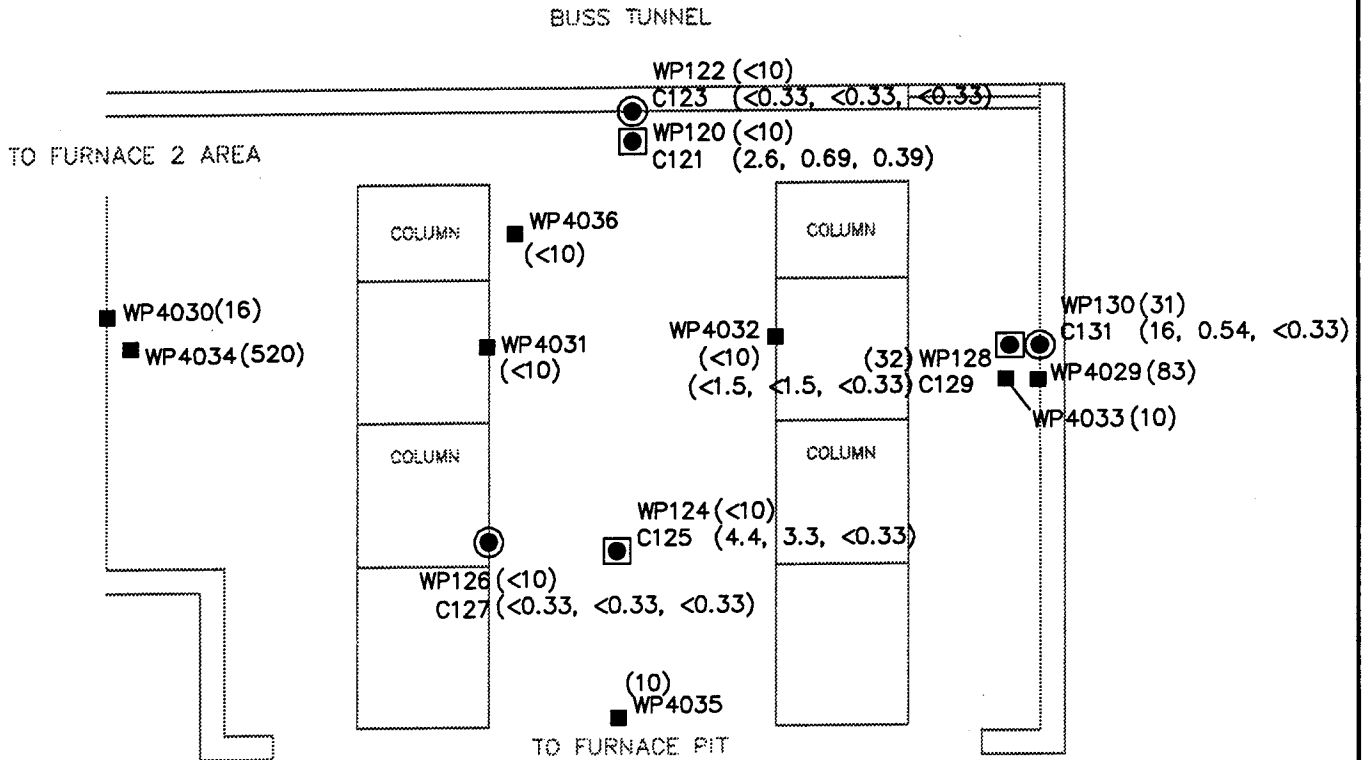
figure 7.1
SAMPLE LOCATIONS
PIT 3
GMPT SAGINAW MALLEABLE IRON PLANT
Saginaw, Michigan

CRA



SCALE: 1/8" = 1'-0"

CEILING HEIGHT = 12'



LEGEND

- WP4035 WIPE SAMPLES (PCB RESULTS- $\mu\text{g}/100\text{cm}^2$, DECEMBER 27/96)
- WP126 WIPE SAMPLES (PCB RESULTS- $\mu\text{g}/100\text{cm}^2$, JULY 8/94)
- C193 WALL CORE SAMPLES (PCB RESULTS-mg/kg 0-1/2", 1/2"-5", 5"-10", JULY 8/94)
- C195 FLOOR CORE SAMPLES (PCB RESULTS-mg/kg 0-1/2", 1/2"-5", 5"-10", JULY 8/94)

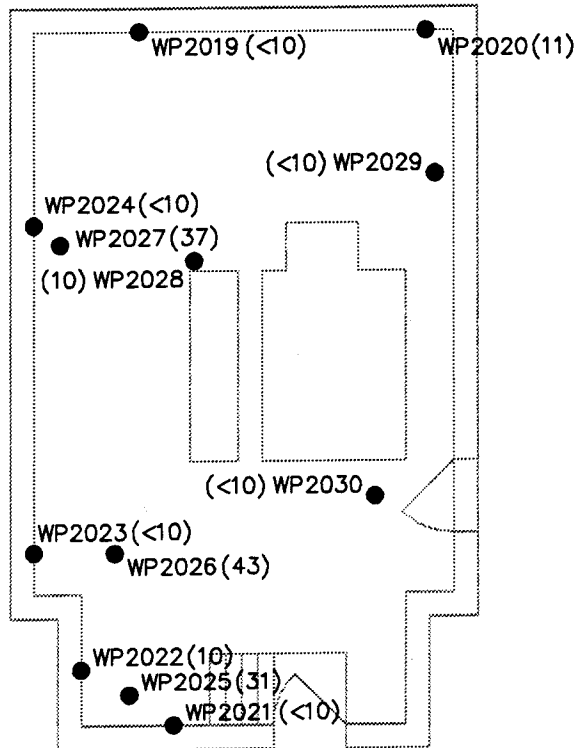
figure 7.2
SAMPLE LOCATIONS
BUSS TUNNEL TO PIT 3
GMPT SAGINAW MALLEABLE IRON PLANT
Saginaw, Michigan

CRA



SCALE: 1/8" = 1'-0"

CEILING HEIGHT = 20'



LEGEND

● WP140 WIPE SAMPLES (PCB RESULTS— $\mu\text{g}/100\text{cm}^2$)

NOTES: SAMPLES TAKEN SEPT 4/96

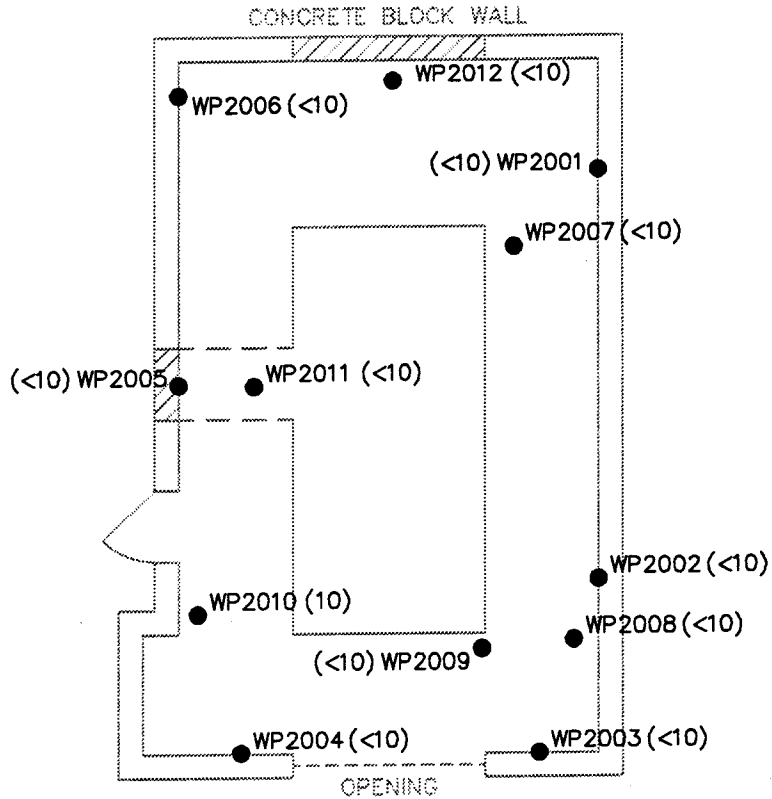
figure 7.3
 SAMPLE LOCATIONS
 TRANSFORMER ROOM 3
 GMPT SAGINAW MALLEABLE IRON PLANT
 Saginaw, Michigan

CRA



SCALE: 1/8" = 1'-0"

CEILING HEIGHT = 15'



LEGEND

● WP140 WIPE SAMPLES (PCB RESULTS— $\mu\text{g}/100\text{cm}^2$)

NOTES: SAMPLES TAKEN SEPT 4/96

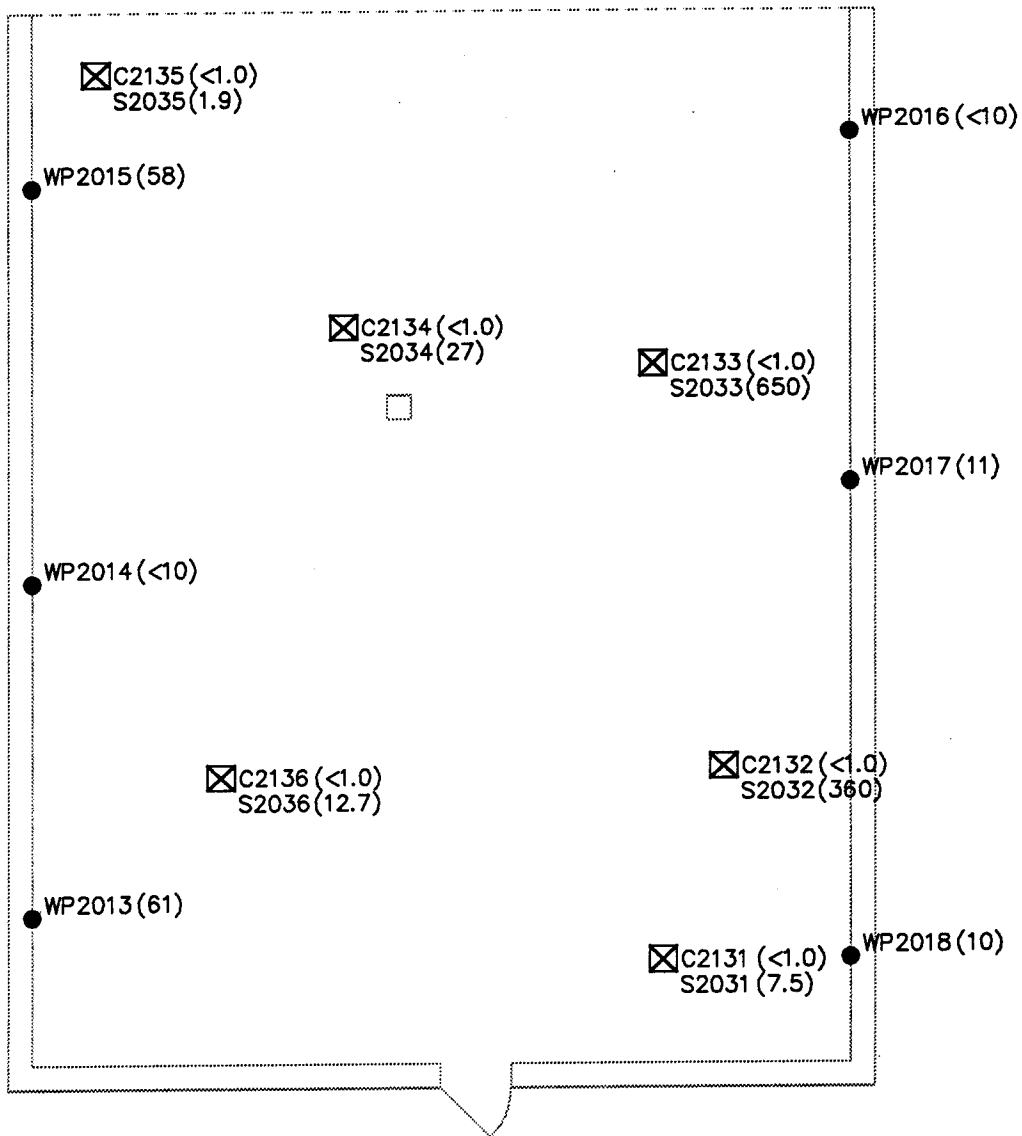
figure 7.4
 SAMPLE LOCATIONS
 CONTROL ROOM 3
 GMPT SAGINAW MALLEABLE IRON PLANT
 Saginaw, Michigan

CRA



SCALE: 1/8" = 1'-0"

CEILING HEIGHT = 15'



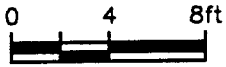
LEGEND

- WP140 WIPE SAMPLES (PCB RESULTS— $\mu\text{g}/100\text{cm}^2$)
- C195 FLOOR CORE SAMPLES (PCB RESULTS— mg/kg BRICK, 5"—10")
- ⊗ SOIL SAMPLES (PCB RESULTS— $\mu\text{g}/100\text{cm}^2$)

NOTES: SAMPLES TAKEN SEPT 4/96, SEPT 5/96

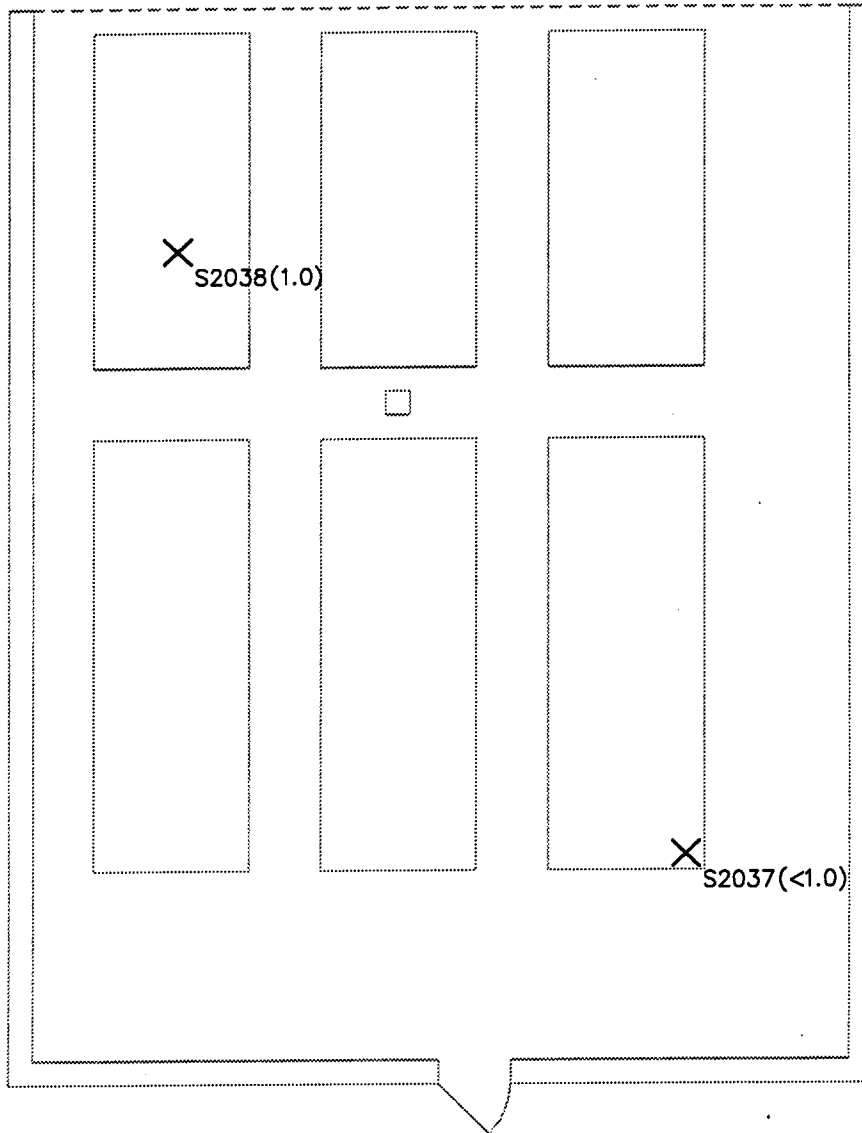
figure 7.5
SAMPLE LOCATIONS
CAPACITOR ROOM 3
GMPT SAGINAW MALLEABLE IRON PLANT
Saginaw, Michigan

CRA



SCALE: 1/8" = 1'-0"

CEILING HEIGHT = 15'



LEGEND

X SOIL SAMPLES (PCB RESULTS—mg/kg)

NOTES: SAMPLES TAKEN SEPT 24/96

figure 7.6

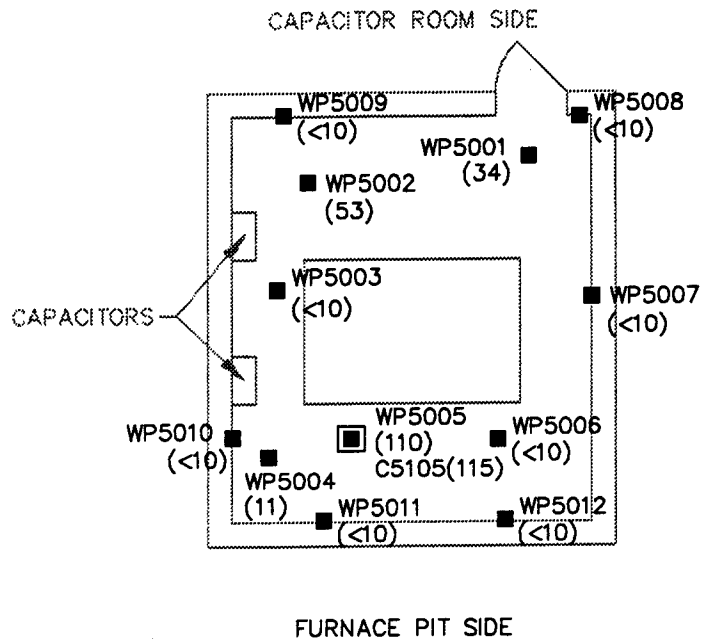
VERIFICATION SAMPLE LOCATIONS
CAPACITOR ROOM 3
GMPT SAGINAW MALLEABLE IRON PLANT
Saginaw, Michigan

CRA



SCALE: 1/8" = 1'-0"

CEILING HEIGHT = 8'



LEGEND

- WP5004 WIPE SAMPLES (PCB RESULTS— $\mu\text{g}/100\text{cm}^2$)
- C5105 FLOOR CORE SAMPLES (PCB RESULTS— mg/kg 0—1/2", 1/2"—5", 5"—10")

NOTES: SAMPLES TAKEN DECEMBER 26/96

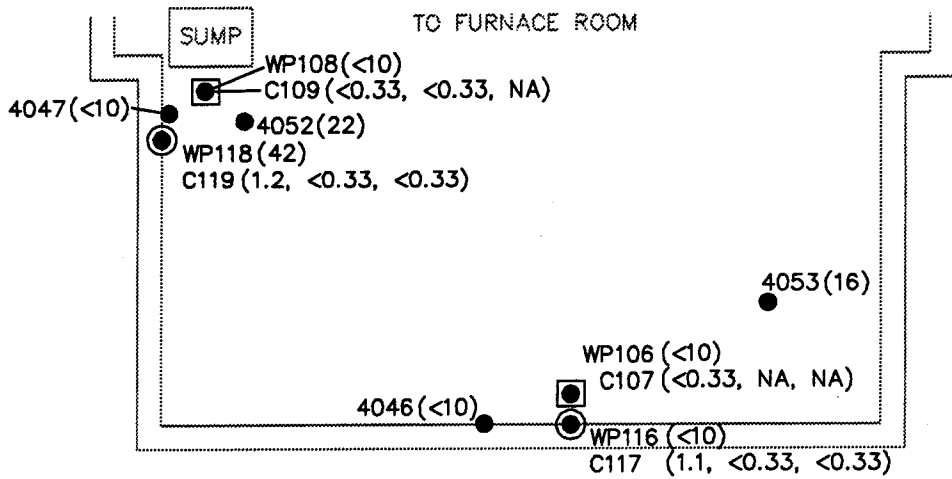
figure 7.7
 SAMPLE LOCATIONS
 HYDRAULIC ROOM 3
 GMPT SAGINAW MALLEABLE IRON PLANT
 Saginaw, Michigan

CRA



SCALE: 1/8" = 1'-0"

CEILING HEIGHT = 12'



LEGEND

- WP140 WIPE SAMPLES (PCB RESULTS— $\mu\text{g}/100\text{cm}^2$)
- C117 WALL CORE SAMPLES (PCB RESULTS— mg/kg 0—1/2", 1/2"—5", 5"—10")
- C107 FLOOR CORE SAMPLES (PCB RESULTS— mg/kg BRICK, BRICK—1/2", 1/2"—10")
- NA NOT AVAILABLE

NOTES: SAMPLES TAKEN JULY 8/94 AND FEB 7/97

figure 8.1

SAMPLE LOCATIONS

PIT 4

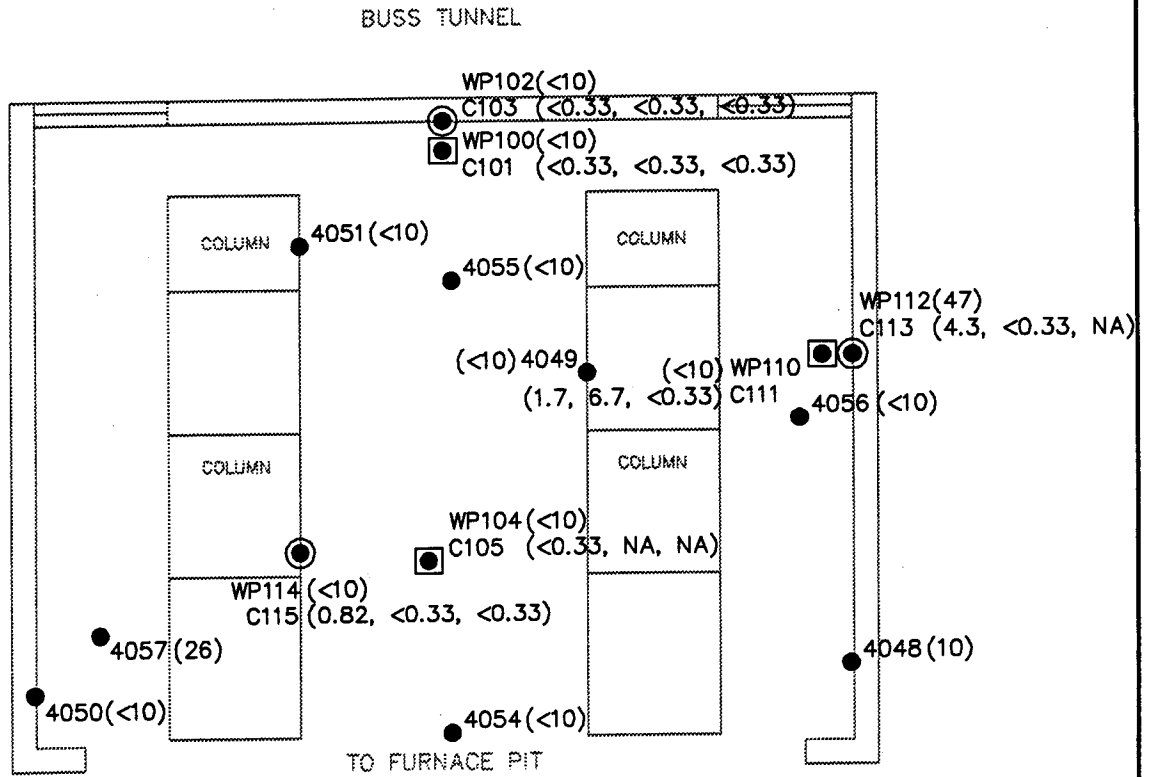
GMPT SAGINAW MALLEABLE IRON PLANT
Saginaw, Michigan

CRA



SCALE: 1/8" = 1'-0"

CEILING HEIGHT = 12'



LEGEND

- WP140 WIPE SAMPLES (PCB RESULTS— $\mu\text{g}/100\text{cm}^2$)
- C193 WALL CORE SAMPLES (PCB RESULTS— mg/kg 0—1/2", 1/2"—5", 5"—10")
- C195 FLOOR CORE SAMPLES (PCB RESULTS— mg/kg 0—1/2", 1/2"—5", 5"—10")
- NA NOT AVAILABLE

NOTES: SAMPLES TAKEN JULY 8/94 AND FEB 7/97

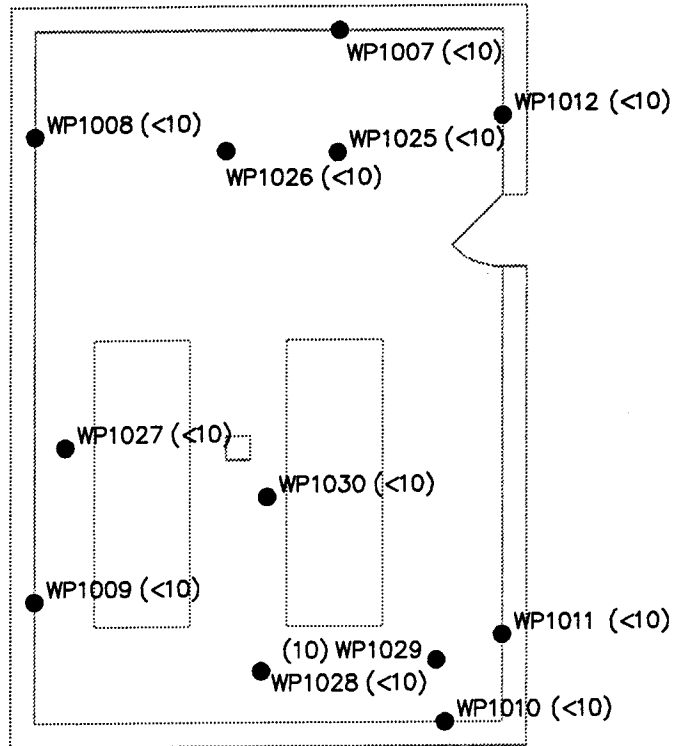
figure 8.2
SAMPLE LOCATIONS
BUSS TUNNEL TO PIT 4
GMPT SAGINAW MALLEABLE IRON PLANT
Saginaw, Michigan

CRA



SCALE: 1/8" = 1'-0"

CEILING HEIGHT = 15'



LEGEND

● WP140 WIPE SAMPLES (PCB RESULTS— $\mu\text{g}/100\text{cm}^2$)

NOTES: SAMPLES TAKEN JUNE 7/96, JUNE 10/96

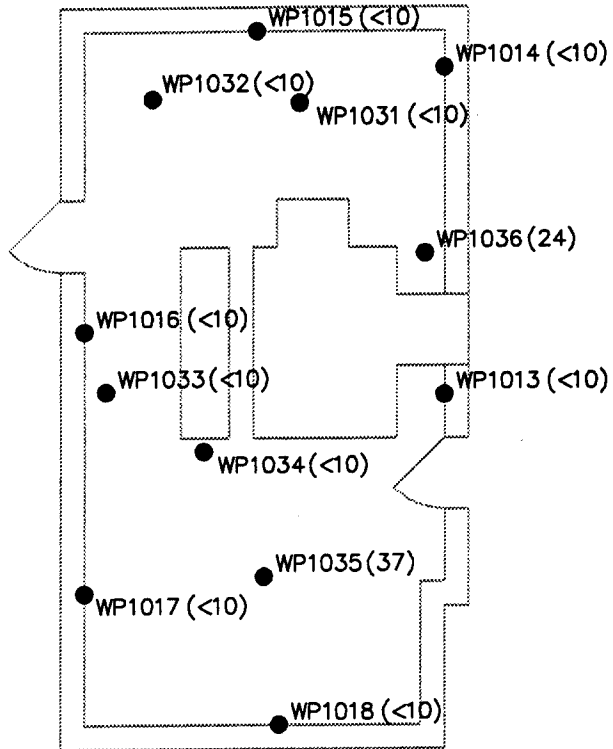
figure 8.3
 SAMPLE LOCATIONS
 GENERATOR ROOM 4
 GMPT SAGINAW MALLEABLE IRON PLANT
 Saginaw, Michigan

CRA



SCALE: 1/8" = 1'-0"

CEILING HEIGHT = 20'



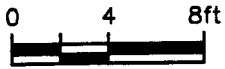
LEGEND

● WP140 WIPE SAMPLES (PCB RESULTS-- $\mu\text{g}/100\text{cm}^2$)

NOTES: SAMPLES TAKEN JUNE 7/96, JUNE 10/96

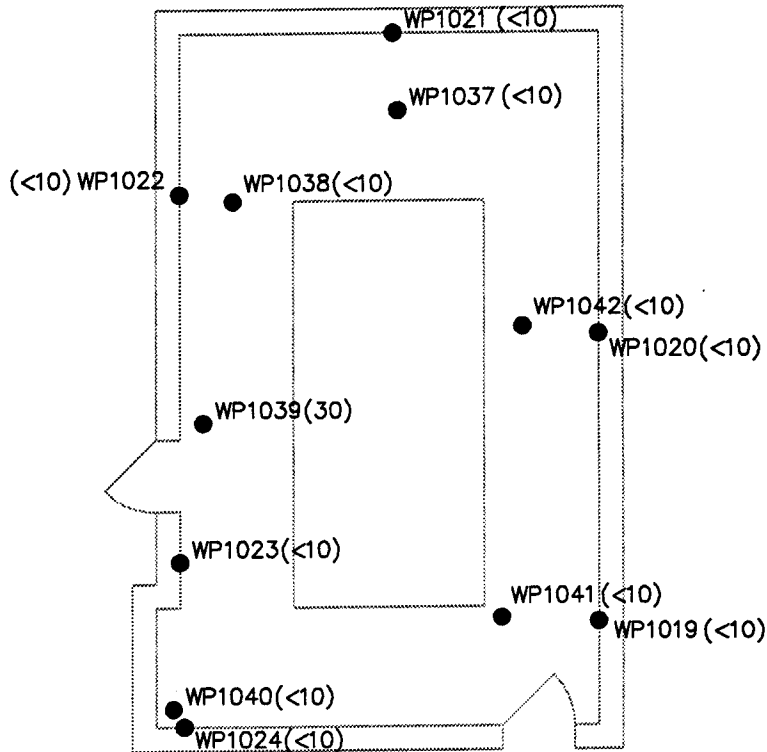
figure 8.4
 SAMPLE LOCATIONS
 TRANSFORMER ROOM 4
 GMPT SAGINAW MALLEABLE IRON PLANT
 Saginaw, Michigan

CRA



SCALE: 1/8" = 1'-0"

CEILING HEIGHT = 15'



LEGEND

● WP140 WIPE SAMPLES (PCB RESULTS— $\mu\text{g}/100\text{cm}^2$)

NOTES: SAMPLES TAKEN JUNE 7/96, JUNE 10/96

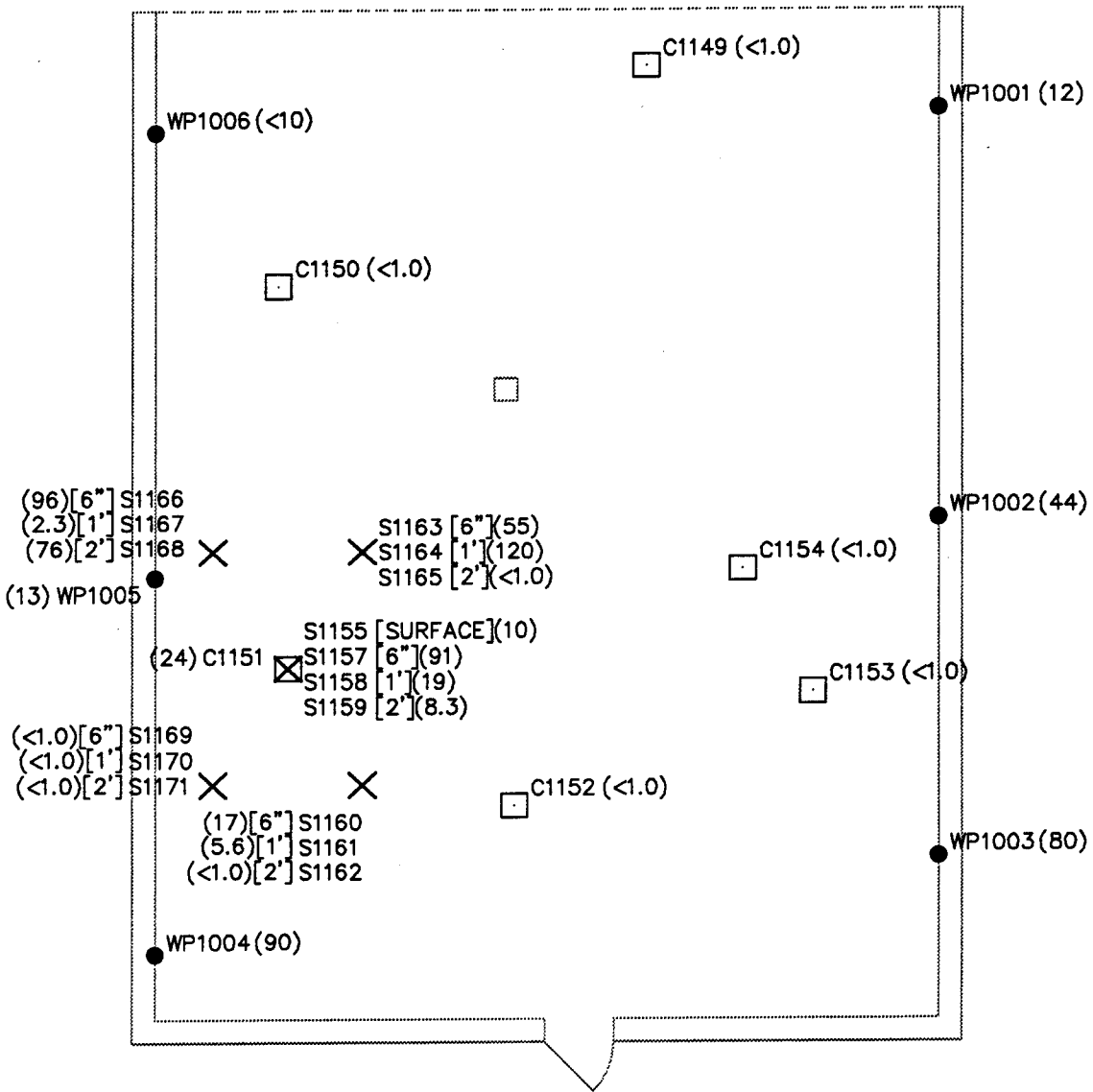
figure 8.5
 SAMPLE LOCATIONS
 CONTROL ROOM 4
 GMPT SAGINAW MALLEABLE IRON PLANT
 Saginaw, Michigan

CRA



SCALE: 1/8" = 1'-0"

CEILING HEIGHT = 15'



LEGEND

- WP140 WIPE SAMPLES (PCB RESULTS— $\mu\text{g}/100\text{cm}^2$)
- × SOIL SAMPLES [DEPTH OF SAMPLE] (PCB RESULTS— mg/kg)
- C195 FLOOR CORE SAMPLES (PCB RESULTS— mg/kg 5"—10")

NOTES: SAMPLES TAKEN JUNE 7/96,
JUNE 17/96, JUNE 20/96

figure 8.6

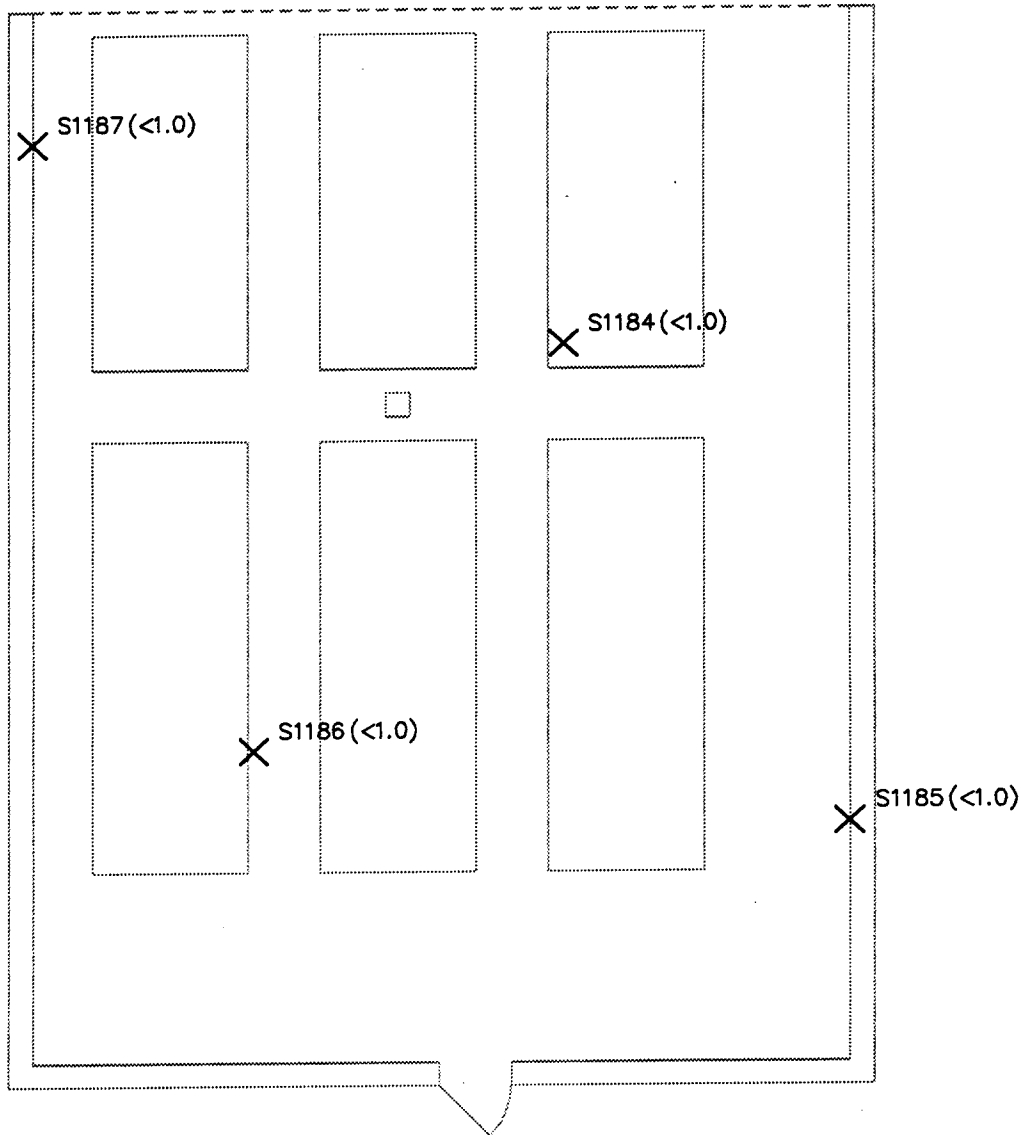
**SAMPLE LOCATIONS
CAPACITOR ROOM 4
GMPT SAGINAW MALLEABLE IRON PLANT
Saginaw, Michigan**

CRA



SCALE: 1/8" = 1'-0"

CEILING HEIGHT = 15'



LEGEND

× SOIL SAMPLES (PCB RESULTS—mg/kg)

NOTES: SAMPLES TAKEN JULY 9/96

figure 8.7

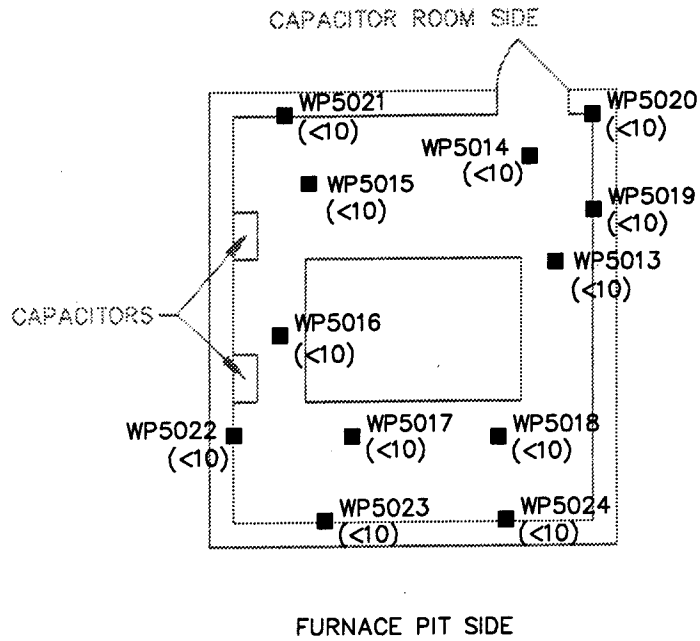
VERIFICATION SAMPLE LOCATIONS
CAPACITOR ROOM 4
GMPT SAGINAW MALLEABLE IRON PLANT
Saginaw, Michigan

CRA



SCALE: 1/8" = 1'-0"

CEILING HEIGHT = 8'



LEGEND

■ WP5024 WIPE SAMPLES (PCB RESULTS— $\mu\text{g}/100\text{cm}^2$)

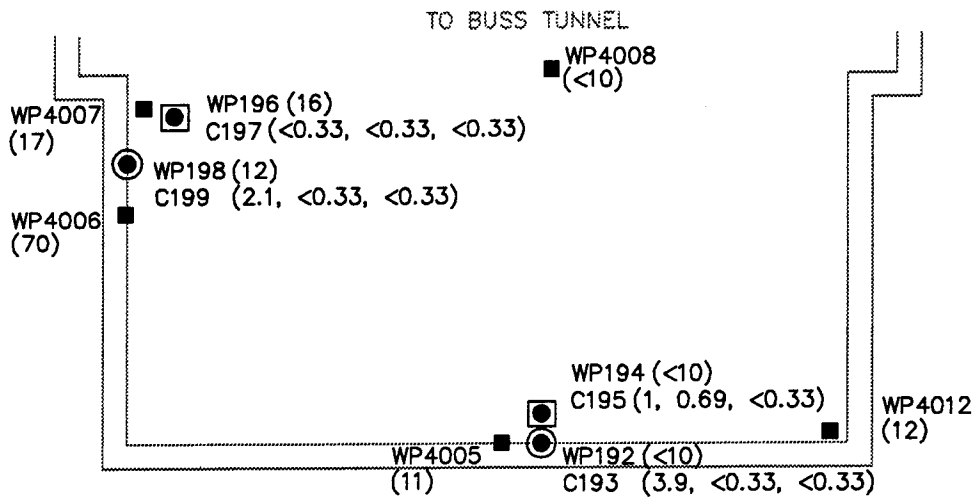
NOTES: SAMPLES TAKEN DECEMBER 26/96

figure 8.8
 SAMPLE LOCATIONS
 HYDRAULIC ROOM 4
 GMPT SAGINAW MALLEABLE IRON PLANT
 Saginaw, Michigan



SCALE: 1/8" = 1'-0"

CEILING HEIGHT = 12'



LEGEND

- WP140 WIPE SAMPLES (PCB RESULTS—
μg/100cm², JULY 9/94)
- C193 WALL CORE SAMPLES (PCB RESULTS—mg/kg 0-1/2",
1/2"-5", 5"-10", JULY 9/94)
- C195 FLOOR CORE SAMPLES (PCB RESULTS—mg/kg BRICK,
BRICK-1/2", 1/2"-10", JULY 9/94)
- WP4006 WIPE SAMPLES (PCB RESULTS—
μg/100cm², NOVEMBER 27/96)

figure 9.1

SAMPLE LOCATIONS
PIT 5

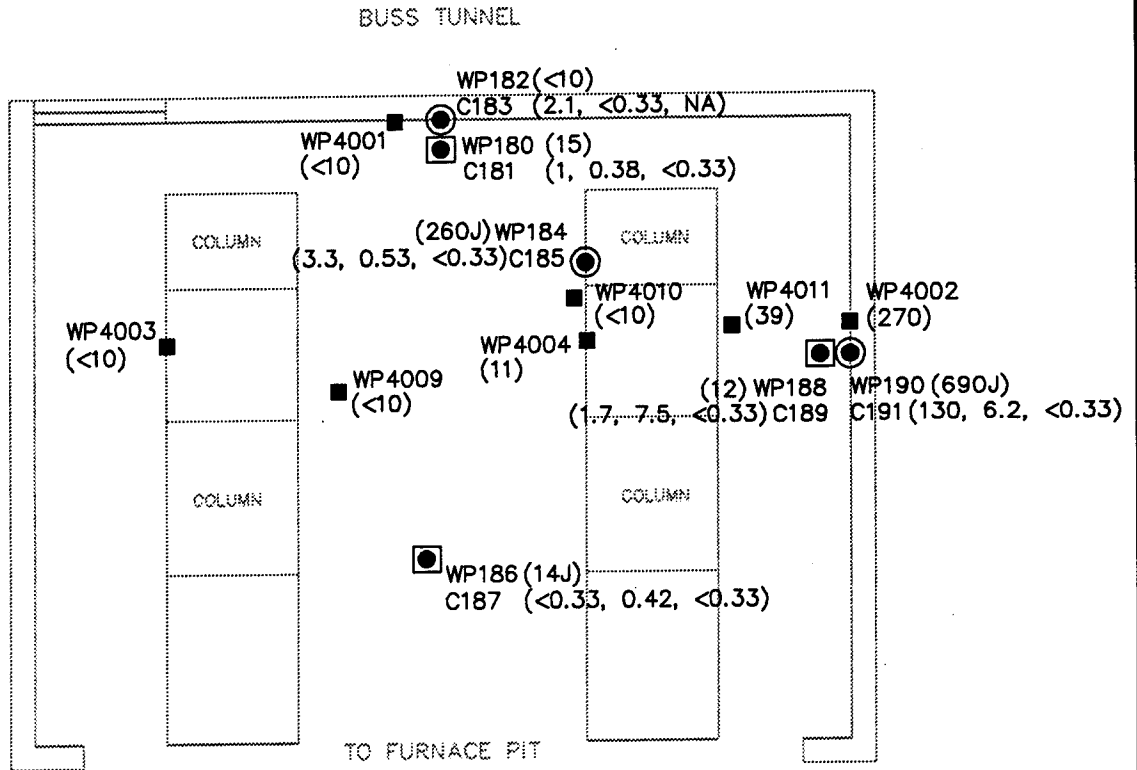
GMPT SAGINAW MALLEABLE IRON PLANT
Saginaw, Michigan

CRA



SCALE: 1/8" = 1'-0"

CEILING HEIGHT = 12'

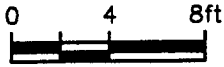


LEGEND

- WP140 WIPE SAMPLES (PCB RESULTS—
μg/100cm², JULY 9/94)
- C193 WALL CORE SAMPLES (PCB RESULTS—mg/kg 0-1/2",
1/2"-5", 5"-10", JULY 9/94)
- C195 FLOOR CORE SAMPLES (PCB RESULTS—mg/kg 0-1/2",
1/2"-5", 5"-10", JULY 9/94)
- WP4001 WIPE SAMPLES (PCB RESULTS—
μg/100cm², NOVEMBER 27/96)
- NA NOT AVAILABLE
- J ESTIMATED VALUE

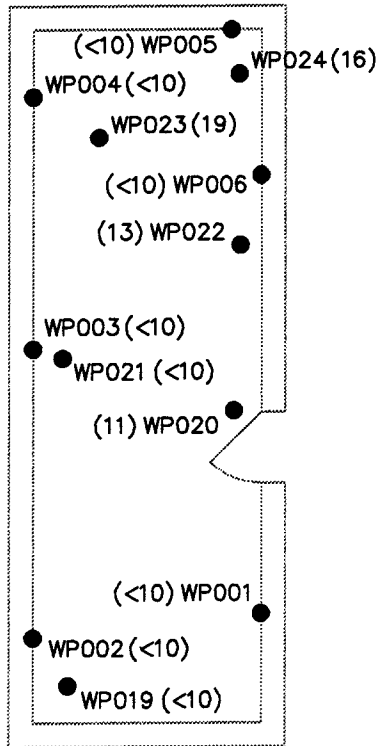
figure 9.2
SAMPLE LOCATIONS
BUSS TUNNEL TO PIT 5
GMPT SAGINAW MALLEABLE IRON PLANT
Saginaw, Michigan

CRA



SCALE: 1/8" = 1'-0"

CEILING HEIGHT = 15'



LEGEND

● WP140 WIPE SAMPLES (PCB RESULTS- $\mu\text{g}/100\text{cm}^2$)

NOTES: SAMPLES TAKEN MAR 13/96, MAR 14/96

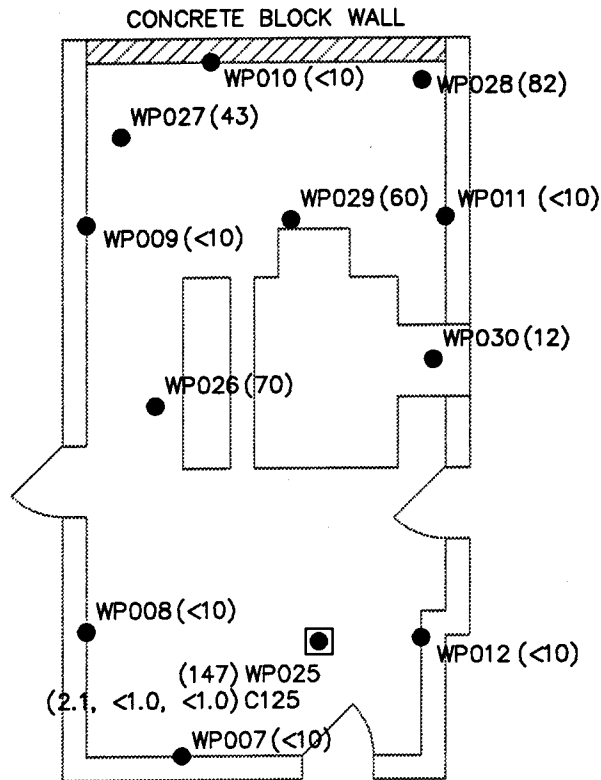
figure 9.3
 SAMPLE LOCATIONS
 GENERATOR ROOM 5
 GMPT SAGINAW MALLEABLE IRON PLANT
 Saginaw, Michigan

CRA



SCALE: 1/8" = 1'-0"

CEILING HEIGHT = 20'



LEGEND

- WP140 WIPE SAMPLES (PCB RESULTS-- $\mu\text{g}/100\text{cm}^2$)
- C195 FLOOR CORE SAMPLES (PCB RESULTS-- mg/kg 0-1/2", 1/2"-5", 5"-10")

NOTES: SAMPLES TAKEN MAR 13/96, MAR 15/96

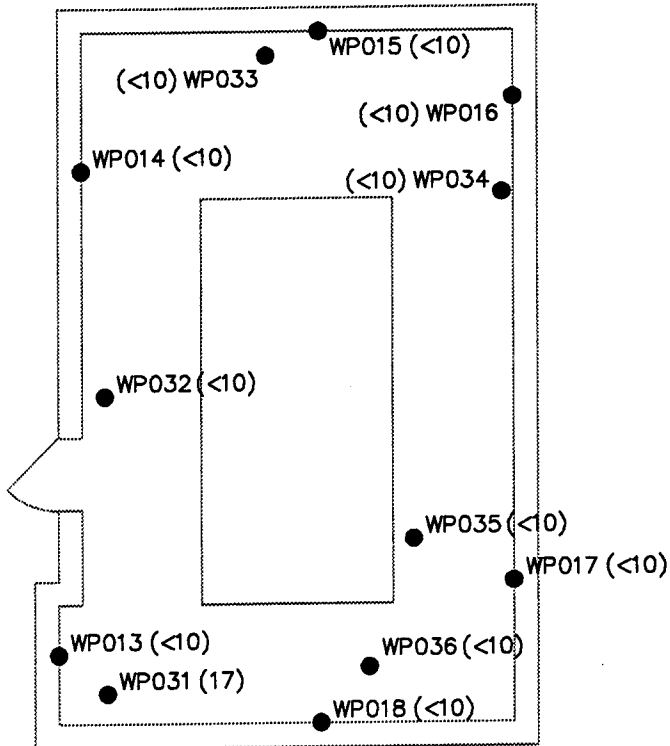
figure 9.4
**SAMPLE LOCATIONS
 TRANSFORMER ROOM 5
 GMPT SAGINAW MALLEABLE IRON PLANT
 Saginaw, Michigan**

CRA



SCALE: 1/8" = 1'-0"

CEILING HEIGHT = 15'



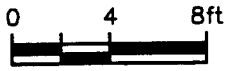
LEGEND

● WP140 WIPE SAMPLES (PCB RESULTS— $\mu\text{g}/100\text{cm}^2$)

NOTES: SAMPLES TAKEN MAR 13/96, MAR 15/96

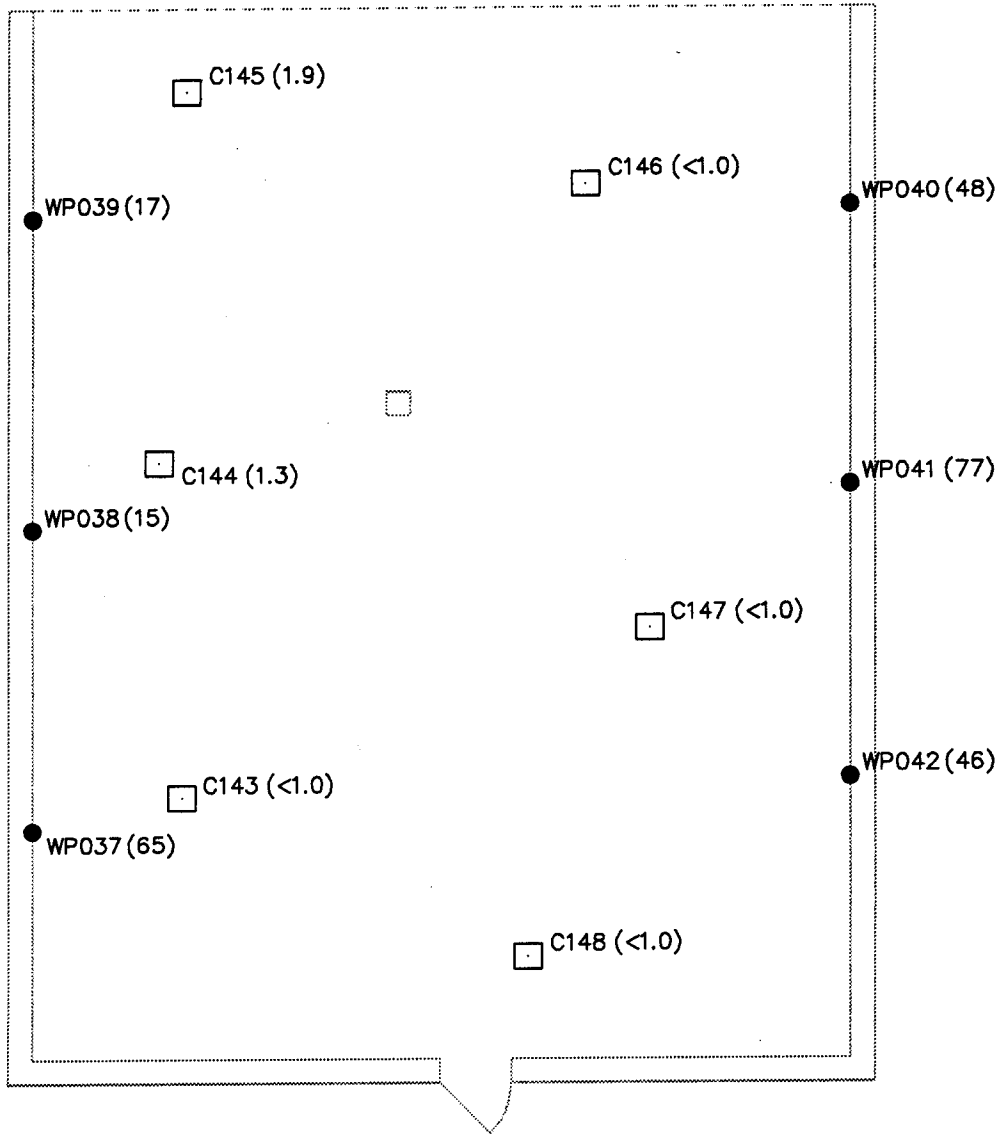
figure 9.5
 SAMPLE LOCATIONS
 CONTROL ROOM 5
 GMPT SAGINAW MALLEABLE IRON PLANT
 Saginaw, Michigan

CRA



SCALE: 1/8" = 1'-0"

CEILING HEIGHT = 15'



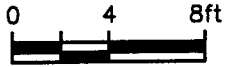
LEGEND

- WP140 WIPE SAMPLES (PCB RESULTS— $\mu\text{g}/100\text{cm}^2$)
- C195 FLOOR CORE SAMPLES (PCB RESULTS— mg/kg 5"—10")

NOTES: SAMPLES TAKEN MAR 15/96

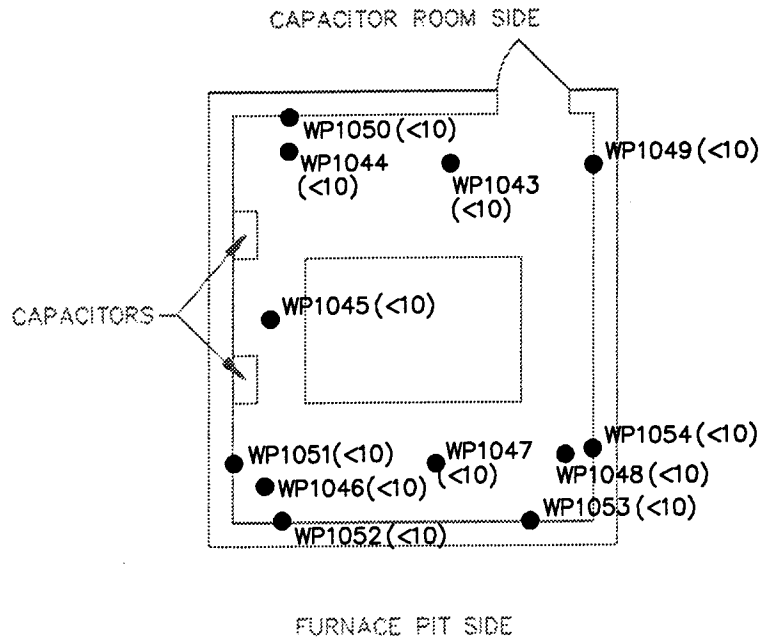
figure 9.6
SAMPLE LOCATIONS
CAPACITOR ROOM 5
GMPT SAGINAW MALLEABLE IRON PLANT
Saginaw, Michigan

CRA



SCALE: 1/8" = 1'-0"

CEILING HEIGHT = 8'



LEGEND

● WP140 WIPE SAMPLES (PCB RESULTS— $\mu\text{g}/100\text{cm}^2$)

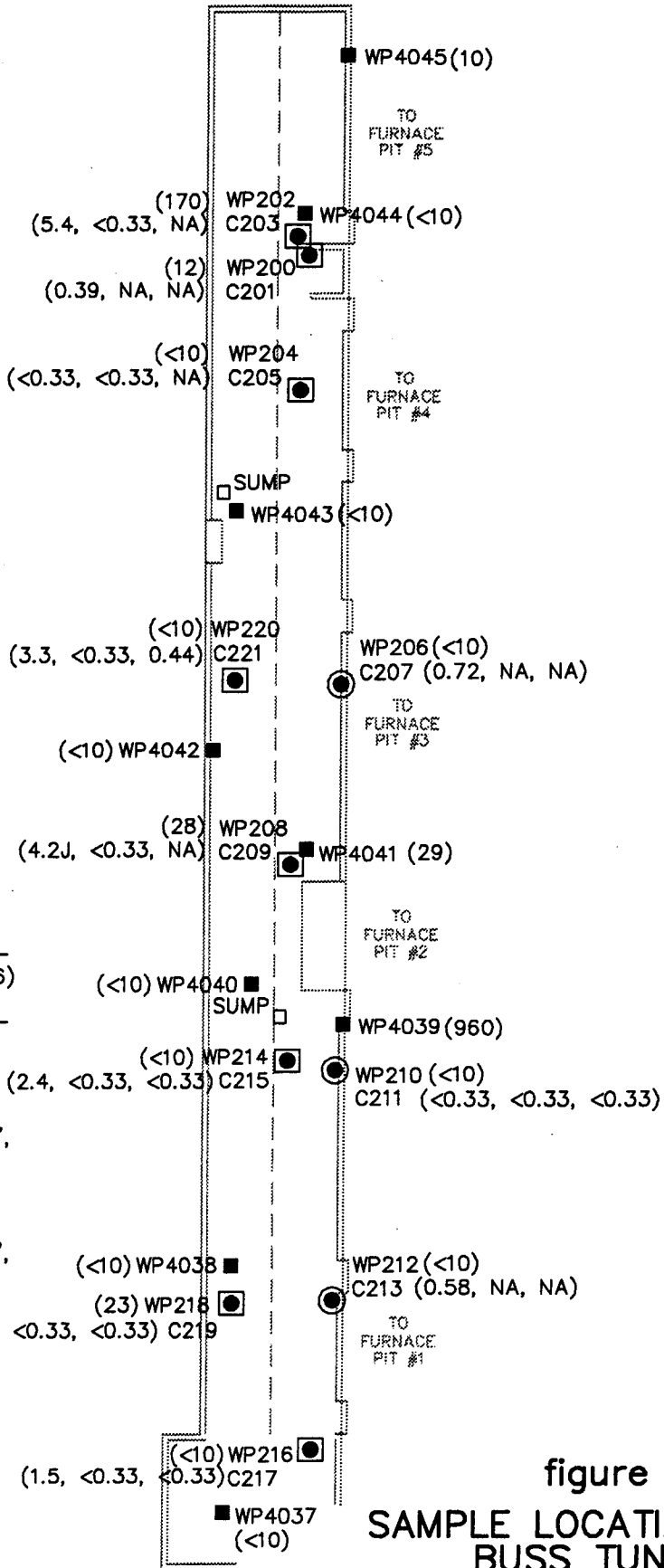
NOTES: SAMPLES TAKEN JUNE 11/96

figure 9.7
 SAMPLE LOCATIONS
 HYDRAULIC ROOM 5
 GMPT SAGINAW MALLEABLE IRON PLANT
 Saginaw, Michigan



SCALE: 1/8" = 4'-0"

METAL CEILING HEIGHT = 7'
 CONCRETE CEILING HEIGHT = 14'



LEGEND

- WP4038 WIPE SAMPLES (PCB RESULTS— $\mu\text{g}/100\text{cm}^2$, DECEMBER 28/96)
- WP218 WIPE SAMPLES (PCB RESULTS— $\mu\text{g}/100\text{cm}^2$, JULY 9/94, SEPTEMBER 13/94)
- C213 WALL CORE SAMPLES (PCB RESULTS—mg/kg 0-1/2", 1/2"-5", 5"-10", JULY 9/94, SEPTEMBER 13/94)
- C133 FLOOR CORE SAMPLES (PCB RESULTS—mg/kg 0-1/2", 1/2"-5", 5"-10", JULY 9/94, SEPTEMBER 13/94)
- NA NOT AVAILABLE
- J ESTIMATED VALUE

figure 10.1
SAMPLE LOCATIONS
BUSS TUNNEL
GMPT SAGINAW MALLEABLE IRON PLANT
Saginaw, Michigan

CRA