

Transmitted via email

Mr. Brian Zuber
Senior Environmental Quality Analyst
Emerging Pollutants Section, WRD
Department of Environment, Great Lakes,
and Energy
PO Box 30473
Lansing, MI 48909-7974

Ms. Nicole Sanabria & Ms. Christina Hebert
Geologist and Environmental Quality Analyst
Materials Management Division
Department of Environment, Great Lakes,
and Energy
PO Box 30241
Lansing, MI 48909-7741

RE: Corrective Action Plan – South and West of Site Storm Sewer Evaluation Update
Coldwater Road Site
6220 Horton Street, Mount Morris, MI
MID 005 356 860

Date August 22, 2024

Dear Mr. Zuber, Ms. Sanabria, & Ms. Hebert:

On behalf of Revitalizing Auto Communities Environmental Response (RACER) Trust, Ramboll Americas Engineering Solutions, Inc. (Ramboll) is providing the following update to the April 17, 2024, South and West of Site Evaluation Update related to the storm sewer system south of Coldwater Road at the RACER Coldwater Road Facility located at 6220 Horton Street, Mount Morris, Genesee County, Michigan (Site).

Ramboll
2090 Commonwealth Blvd.
Ann Arbor, MI 48105
USA

T 734-761-4000
F 734-761-2050
<https://ramboll.com>

Additional sample collection was completed to provide further information to the South of Site Evaluation Letter and Task 1 of the June 3, 2022, Corrective Action Plan (CAP) submitted to the Michigan Department of Environmental, Great Lakes, and Energy (EGLE) Water Resources Division, via MiEnviro to address Violation Notice (No. VN-012757) dated May 4, 2022.

The evaluation was also conducted in response to the analytical results from per- and polyfluoroalkyl substances (PFAS), specifically perfluorooctanesulfonic acid (PFOS), samples collected on September 22, 2021 by EGLE along the Cornwell Drain.

The purpose of this letter is to provide a summary of the additional sample collection information related to the storm sewer system along the southern Site boundary east of the middle entry drive and south of Coldwater Road, summarize the results collected west of the Site from the storm sewer line along the eastern side of Saginaw Road, and to provide a summary of the storm water inspection which was conducted during the sample collection.

Storm water inspections have been completed quarterly since August 2019 to monitor the corrective measures performed to the storm water system to mitigate the discharge of surface water from the Site. The storm water matrix and figure are included as **Appendix A**.

Sample Collection

On June 17, 2024, six storm water samples were collected from the storm water system south of the southern Site boundary. MW-10E-W, SS-14, and SS-23 were collected along Coldwater Road near the southern Site boundary. SS-12, SS-15, and SS-16 were collected along Harry Street south of Coldwater Road from storm water flowing away from the Site (**Figure 1**). A storm water sample was also collected from SS-10 (see **Figure 2** for SS-10 sample location) from the storm sewer line along the eastern side of Saginaw Road west of Site, which was part of the lining activities. This location is sampled to further evaluate the effectiveness of the lining activities.

Prior to collecting the samples for the events there was approximately 0.45 inches of precipitation on June 17, 2024 in the area. The sample location SS-11 on East Kurtz Avenue west of Harry Street (and EGLE's CD-10 sample location) had no flow or standing water and was not sampled. The storm water flow rate was a little less than average during this most recent event.

The sample collection was completed following the protocols set forth in the EGLE Michigan PFAS Action Response Team (MPART) Surface Water PFAS Sampling Guidance dated October 2022 and Ramboll's PFAS Sampling Field Guidance Document Number 1.07.

Samples were collected either by using the direct sampling method of collecting the water directly into the sample container or by using a peristaltic pump and high-density polyethylene tubing that was weighted down with a stainless-steel weight and lowered into the manhole.

The samples were labeled, packed on ice, and shipped via courier under routine chain-of-custody protocols to Merit Laboratories, Inc. (Merit) of East Lansing, Michigan.

Analytical Results

The storm water samples were analyzed for PFAS by method ASTM D7979-19 (no preservative). The analytical results for the recent storm water samples and historical storm water samples collected south of the Site are summarized in **Table 1**, the samples collected west of the Site are summarized in **Table 2**, and the analytical laboratory report is included in **Appendix B**.

During the June 17, 2024 sampling event, the samples collected along Harry Street from storm water flowing away from the Site: SS-12 (100 ng/l PFOS), SS-15 (100 ng/l PFOS), and SS-16 (82 ng/l PFOS), and storm water samples collected along Coldwater Road near the southern Site boundary: MH-10E-W (27 ng/l PFOS), SS-14 (52 ng/l PFOS), and SS-23 (92 ng/l) were detected above the October 12, 2023 Part 201 Groundwater Generic Cleanup Criteria and Screening Levels and the Rule 57 Surface Water Quality Value of 12 ng/l for PFOS.

The PFOS concentrations increased compared to the last sampling event and were more comparable to historical sample results than the decrease that was observed during the last event.

The PFOS concentration of sample SS-10 collected along Saginaw Road west of the Site was 14 ng/l, which is consistent with historical post-lining sample results.

Conclusions and Recommendations

The PFOS concentrations increased compared to the last event and were more comparable to historical results detected prior to the recent plugging activities completed in October and November 2023.

To allow for evaluation of concentration variability and trends, we propose to collect another round of samples from sample location SS-10 west of the Site, and from sample locations SS-12, SS-14, SS-15, SS-16, MH-10E-W, and SS-23 in September 2024. An update similar to this one will be provided within approximately four weeks of receipt of the analytical results from the laboratory.

If you would like a paper copy of any of the attached information let me know. Please contact me at 313-333-0211 or clifford.yantz@ramboll.com or Brendan Mullen with RACER at bmullen@racertrust.org or 201-247-4890, if you have any questions.

Yours sincerely,

RAMBOLL AMERICAS ENGINEERING SOLUTIONS, INC.



Clifford Yantz

Project Manager
1943864 - MIDWEST EAST Resources 056

M 313-333-0211
clifford.yantz@ramboll.com

CC:

Brendan Mullen (RACER Trust)
David Favero (RACER Trust)
Kevin Schneider (Ramboll)

Enclosures:

Table 1 – South of Site Storm Water PFAS Sample Results
Table 2 – West of Site Storm Water PFAS Sample Results
Figure 1 – Storm Water Sewers – Horton Street to Dort Highway
Figure 2 – Storm Water Sewers – West of Site
Appendix A – Storm Water Monitoring Matrix and Figure
Appendix B – Analytical Laboratory Report

TABLES

TABLE 1
RACER Trust - Coldwater Road Peregrine Facilities
Per-and Polyfluoroalkyl Substances Sampling Results - Storm Water Samples South Portion of Site

Coldwater Road - Storm Water Samples - South Portion of Site

Perfluorinated Compound	Well/Sample ID: EGLE Part 201 Generic Cleanup Criteria and Screening Levels GSI	SS-02	SS-02 (DUP-1)	SS-02	SS-04	SS-DUP-2/SS-04	SS-08	SS-11
		(Storm Sewer)	(Storm Sewer)	(Storm Sewer)	(Storm Sewer)	(Storm Sewer)	(Storm Sewer)	(Storm Water)
Sample Date:		11/12/2018	11/12/2018	12/21/2021	3/19/2020	3/19/2020	8/28/2020	4/14/2022
Perfluorobutanoic Acid (PFBA)	--	20	20	13	<100	<100	<10	<9.8
Perfluoropentanoic Acid (PFPeA)	--	<10	<10	6.1	<10	<10	<4.1	<3.9
4:2 Fluorotelomer Sulfonic Acid (4:2 FTSA)	--	<10	<10	<2.1	<10	<10	<2.1	<2.0
Perfluorohexanoic Acid (PFHxA)	--	10	10	4.5	<10	<10	<2.1	<2.0
Perfluorobutane Sulfonic Acid (PFBS)	670,000	<10	<10	3.1	<10	<10	<2.1	82
Perfluoroheptanoic Acid (PFHpA)	--	<10	<10	2.2	<10	<10	<2.1	<2.0
Perfluoropentane Sulfonic Acid (PFPeS)	--	<10	<10	<2.1	<10	<10	<2.1	<2.0
6:2 Fluorotelomer Sulfonic Acid (6:2 FTSA)	--	<10	<10	<4.2	<10	<10	<2.1	<2.0
Perfluorooctanoic Acid (PFOA)	170	20	20	4.8	<10	<10	1.9 J	<2.0
Perfluorohexane Sulfonic Acid (PFHxS)	210	20	20	3.7	<10	<10	<2.1	<2.0
Perfluorohexane Sulfonic Acid - LN (PFHxS-LN)	--	20	20	2.8	<10	<10	<2.1	<2.0
Perfluorohexane Sulfonic Acid - BR (PFHxS-BR)	--	<10	<10	<2.1	<10	<10	<2.1	<2.0
Perfluorononanoic Acid (PFNA)	30	<10	<10	<2.1	<10	<10	<2.1	<2.0
8:2 Fluorotelomer Sulfonic Acid (8:2 FTSA)	--	<10	<10	<4.2	<10	<10	<2.1	<2.0
Perfluoroheptane Sulfonic Acid (PFHpS)	--	10	<10	<2.1	<10	<10	<2.1	<2.0
Perfluorodecanoic Acid (PFDA)	--	<10	<10	<2.1	<10	<10	<2.1	<2.0
N-methyl Perfluorooctanesulfonamidoacetic Acid (N-MeFOSAA)	--	<10	<10	<2.1	<10	<10	<2.1	<2.0
N-Ethyl Perfluorooctane Sulfonamidoacetic Acid (EtFOSAA)	--	<10	<10	<4.2	<10	<10	<4.1	<3.9
Perfluorooctane Sulfonic Acid (PFOS)	12	1520	1250	86	<10	<10	7.3	4.8
Perfluorooctane Sulfonic Acid (PFOS-LN)	--	1160	950	62	<10	<10	4.1	<2.0
Perfluorooctane Sulfonic Acid (PFOS-BR)	--	380	280	24	<10	<10	2.8	4.1
Perfluoroundecanoic Acid (PFUnDA)	--	<10	<10	<2.1	<10	<10	<2.1	<2.0
Perfluorononane Sulfonic Acid (PFNS)	--	<10	<10	<2.1	<10	<10	<2.1	<2.0
Perfluorododecanoic Acid (PFDoDA)	--	<10	<10	<2.1	<10	<10	<2.1	<2.0
Perfluorodecane Sulfonic Acid (PFDS)	--	<10	<10	<2.1	<10	<10	<2.1	<2.0
Perfluorotridecanoic Acid (PFTrDA)	--	<10	<10	<2.1	<10	<10	<2.1	<2.0
Perfluorooctane Sulfonamide (FOSA)	--	<10	<10	<2.1	<10	<10	<2.1	<2.0
Perfluorotetradecanoic Acid (PFTeDA)	--	<10	<10	<4.2	<10	<10	<4.1	<3.9
11-chloroicosafafluoro-3-oxaundecane-1-sulfonic acid (11Cl-PF3OUdS)	--	--	--	<2.1	<10	<10	<2.1	<2.0
9-chlorohexadecafluoro-3-oxanone-1-sulfonic acid (9Cl-PF3ONS)	--	--	--	<2.1	<10	<10	<2.1	<2.0
4,8-dioxa-3H-perfluorononanoic acid (ADONA)	--	--	--	<2.1	<10	<10	<2.1	<2.0
Hexafluoropropylene oxide dimer (HFPO-DA)	--	--	--	<10	<10	<10	<2.1	<3.9
3-Perfluoroheptyl propanoic acid (FHpPA (7:3 FTCA))	--	--	--	--	--	--	--	--
3-Perfluoropentyl propanoic acid (FPePA (5:3 FTCA))	--	--	--	--	--	--	--	--
3-Perfluoropropyl propanoic acid (FPrPA (3:3 FTCA))	--	--	--	--	--	--	--	--
Perfluorobutanesulfonamide (PFBSA)	--	--	--	--	--	--	--	--
Perfluoro-4-ethylcyclohexanesulfonate (PFECHS)	--	--	--	--	--	--	--	--
Perfluorohexanesulfonamide (PFHxSA)	--	--	--	--	--	--	--	--
Total Per-and Polyfluoroalkyl Substances	--	1600.0	1320.0	123.4	0.0	0.0	9.2	86.8

Notes

- 1) Detections in **bold**.
- 2) Concentrations in ng/L.
- 3) < = Not detected at specified reporting limit.
- 4) -- = Not analyzed/No criteria.
- 5) Dup = Duplicate sample.
- 6) EGLE Part 201 Groundwater Generic Cleanup Criteria and Screening Levels, October 12, 2023.
- 7) Concentration above the groundwater surface water interface (GSI) criteria are highlighted in yellow.
- 8) B - Compound also found in associated method blank.
- 9) I - Matrix interference with internal standard.
- 10) J - Estimated value less than reporting limit, but greater than MDL.
- 11) X - Elevated reporting limit due to matrix interference.
- 12) Light gray header is most recent sampling event result.
- 13) QA/QC Samples were either not detected above the reporting limit or below the EGLE Part 201 Groundwater Generic Cleanup Criteria.

TABLE 1
RACER Trust - Coldwater Road Peregrine Facilities
Per-and Polyfluoroalkyl Substances Sampling Results - Storm Water Samples South Portion of Site

Coldwater Road - Storm Water Samples - South Portion of Site

Perfluorinated Compound	Well/Sample ID:	EGLE Part 201 Generic Cleanup Criteria and Screening Levels GSI	SS-12	SS-12	SS-12	SS-12	SS-12	SS-12	SS-12	SS-12	SS-12	SS-12
			(Storm Sewer)	(Storm Sewer)	(Storm Sewer)	(Storm Sewer)	(Storm Sewer)	(Storm Sewer)	(Storm Sewer)	(Storm Sewer)	(Storm Sewer)	(Storm Sewer)
	Sample Date:		4/14/2022	6/22/2022	8/4/2022	1/4/2023	3/23/2023	6/27/2023	8/7/2023	12/18/2023	6/17/2024	
Perfluorobutanoic Acid (PFBA)	--	--	<9.8	<11	<10	<10.0	<10	<10.0	<15 X	<9.8	8.8 J	
Perfluoropentanoic Acid (PFPeA)	--	--	2.1 J	4.0 J	4.2	1.1 J	<4.0	2.9 J	<3.9	<3.9	1.7 J	
4:2 Fluorotelomer Sulfonic Acid (4:2 FTSA)	--	--	<2.0	<2.1	<2.0	<2.0	<2.0	<2.0	<2.0	<2.0	<2.1	
Perfluorohexanoic Acid (PFHxA)	--	--	3.3	5.2	4.2	2.6	2.0 J	2.7	<2.0	2.0	4.3	
Perfluorobutane Sulfonic Acid (PFBS)	670,000	--	2.0	5.6	3.9	2.6	<2.0	4.4	2.3	2.1	2.5	
Perfluoroheptanoic Acid (PFHpA)	--	--	2.1	2.7	2.7	<2.0	<2.0	1.7	<2.0	<3.9	1.4 J	
Perfluoropentane Sulfonic Acid (PFPeS)	--	--	<2.0	<2.1	<2.0	<2.0	<2.0	<2.0	<2.0	<2.0	<2.1	
6:2 Fluorotelomer Sulfonic Acid (6:2 FTSA)	--	--	<2.0	<2.1	<2.0	<2.0	<2.0	<2.0	<2.0	<2.0	<2.1	
Perfluorooctanoic Acid (PFOA)	170	--	5.8	11	7.5	2.1	<2.0	3.6	4.2	1.5 J	4.7	
Perfluorohexane Sulfonic Acid (PFHxS)	210	--	2.8	3.5	3.0	1.6 J	<2.0	<2.0	<2.0	<2.0	3.0	
Perfluorohexane Sulfonic Acid - LN (PFHxS-LN)	--	--	1.7 J	2.8	2.4	<2.0	<2.0	<2.0	<2.0	<2.0	2.3	
Perfluorohexane Sulfonic Acid - BR (PFHxS-BR)	--	--	<2.0	<2.1	<2.0	<2.0	<2.0	<2.0	<2.0	<2.0	<2.1	
Perfluorononanoic Acid (PFNA)	30	--	<2.0	<2.1	<2.0	<2.0	<2.0	<2.0	<2.0	<2.0	<2.1	
8:2 Fluorotelomer Sulfonic Acid (8:2 FTSA)	--	--	<2.0	<2.1	<2.0	<2.0	<2.0	<2.0	<2.0	<2.0	<2.1	
Perfluoroheptane Sulfonic Acid (PFHpS)	--	--	<2.0	<2.1	<2.0	<2.0	<2.0	<2.0	<2.0	<2.0	<2.1	
Perfluorodecanoic Acid (PFDA)	--	--	<2.0	<2.1	<2.0	<2.0	<2.0	<2.0	<2.0	<2.0	<2.1	
N-methyl Perfluorooctanesulfonamidoacetic Acid (N-MeFOSAA)	--	--	<2.0	<2.1	<2.0	<2.0	<2.0	<2.0	<2.0	<2.0	<2.1	
N-Ethyl Perfluorooctane Sulfonamidoacetic Acid (EtFOSAA)	--	--	<3.9	<4.2	<4.1	<4.0	<4.0	<4.0	<3.9	<3.9	<4.1	
Perfluorooctane Sulfonic Acid (PFOS)	12	--	140	91	190	86	34	64	93	22	100	
Perfluorooctane Sulfonic Acid (PFOS-LN)	--	--	100	63	140	68	28	46	71	16	74	
Perfluorooctane Sulfonic Acid (PFOS-BR)	--	--	34	28	44	17	6	17	19	5.7	25	
Perfluoroundecanoic Acid (PFUnDA)	--	--	<2.0	<2.1	<2.0	<2.0	<2.0	<2.0	<2.0	<2.0	<2.1	
Perfluorononane Sulfonic Acid (PFNS)	--	--	<2.0	<2.1	<2.0	<2.0	<2.0	<2.0	<2.0	<2.0	<2.1	
Perfluorododecanoic Acid (PFDoDA)	--	--	<2.0	<2.1	<2.0	<2.0	<2.0	<2.0	<2.0	<2.0	<2.1	
Perfluorodecane Sulfonic Acid (PFDS)	--	--	<2.0	<2.1	<2.0	<2.0	<2.0	<2.0	<2.0	<2.0	<2.1	
Perfluorotridecanoic Acid (PFTriDA)	--	--	<2.0	<2.1	<2.0	<2.0	<2.0	<2.0	<2.0	<2.0	<2.1	
Perfluorooctane Sulfonamide (FOSA)	--	--	<2.0	<2.1	<2.0	<2.0	<2.0	<2.0	<2.0	<2.0	<2.1	
Perfluorotetradecanoic Acid (PFTeDA)	--	--	<3.9	<4.2	<4.1	<4.0	<4.0	<4.0	<3.9	<3.9	<4.1	
11-chlorooicosafluoro-3-oxaundecane-1-sulfonic acid (11Cl-PF3OUdS)	--	--	<2.0	<2.1	<2.0	<2.0	<2.0	<2.0	<2.0	<2.0	<2.1	
9-chlorohexadecafluoro-3-oxanone1-sulfonic acid (9Cl-PF3ONS)	--	--	<2.0	<2.1	<2.0	<2.0	<2.0	<2.0	<2.0	<2.0	<2.1	
4,8-dioxo-3H-perfluorononanoic acid (ADONA)	--	--	<2.0	<2.1	<2.0	<2.0	<2.0	<2.0	<2.0	<2.0	<2.1	
Hexafluoropropylene oxide dimer (HFPO-DA)	--	--	<3.9	<11	<10	<10.0	<2.0	<2.0	<2.0	<2.0	<10	
3-Perfluoroheptyl propanoic acid (FHpPA (7:3 FTCA))	--	--	--	--	--	--	--	<4.0	<3.9	<9.8	<10	
3-Perfluoropentyl propanoic acid (FPePA (5:3 FTCA))	--	--	--	--	--	--	--	<4.0	<3.9	<9.8	<10	
3-Perfluoropropyl propanoic acid (FPrPA (3:3 FTCA))	--	--	--	--	--	--	--	<4.0	<3.9	<9.8	<10	
Perfluorobutanesulfonamide (PFBSA)	--	--	--	--	--	--	--	<2.0	<2.0	0.71 J	0.81 J	
Perfluoro-4-ethylcyclohexanesulfonate (PFECHS)	--	--	--	--	--	--	--	19	17	11	41	
Perfluorohexanesulfonamide (PFHxSA)	--	--	--	--	--	--	--	<2.0	<2.0	<2.0	<2.1	
Total Per-and Polyfluoroalkyl Substances	--	--	158.1	123.0	215.5	96.0	36.0	98.3	116.5	39.3	168.2	

Notes

- 1) Detections in **bold**.
- 2) Concentrations in ng/L.
- 3) < = Not detected at specified reporting limit.
- 4) -- = Not analyzed/No criteria.
- 5) Dup = Duplicate sample.
- 6) EGLE Part 201 Groundwater Generic Cleanup Criteria and Screening Levels, October 12, 2023.
- 7) Concentration above the groundwater surface water interface (GSI) criteria are highlighted in yellow.
- 8) B - Compound also found in associated method blank.
- 9) I - Matrix interference with internal standard.
- 10) J - Estimated value less than reporting limit, but greater than MDL.
- 11) X - Elevated reporting limit due to matrix interference.
- 12) Light gray header is most recent sampling event result.
- 13) QA/QC Samples were either not detected above the reporting limit or below the EGLE Part 201 Groundwater Generic Cleanup Criteria.



TABLE 1
RACER Trust - Coldwater Road Peregrine Facilities
Per-and Polyfluoroalkyl Substances Sampling Results - Storm Water Samples South Portion of Site

Coldwater Road - Storm Water Samples - South Portion of Site

Perfluorinated Compound	Well/Sample ID: EGLE Part 201 Generic Cleanup Criteria and Screening Levels GSI	SS-13	SS-13	SS-14	SS-14	SS-14	SS-14	SS-14	SS-14	SS-14	SS-14	SS-14	SS-14
		(Storm Sewer)	(Storm Sewer)	(Storm Sewer)	(Storm Sewer)	(Storm Sewer)	(Storm Sewer)	(Storm Sewer)	(Storm Sewer)	(Storm Sewer)	(Storm Sewer)	(Storm Sewer)	(Storm Sewer)
Sample Date:		5/16/2022	8/4/2022	5/16/2022	6/22/2022	8/4/2022	1/4/2023	3/23/2023	6/27/2023	8/7/2023	12/18/2023	6/17/2024	
Perfluorobutanoic Acid (PFBA)	--	<39	<10	14	12	<10	<10	<10	<9.7	<21 X	<10	7.9 J	
Perfluoropentanoic Acid (PFPeA)	--	<3.9	1.6 J	2.1 J	5.2	3.5 J	<4.0	<4.0	3.0 J	<3.8	<4.1	1.8 J	
4:2 Fluorotelomer Sulfonic Acid (4:2 FTSA)	--	<2.0	<2.0	<2.1	<2.1	<2.0	<2.0	<2.0	<1.9	<1.9	<2.1	<2.0	
Perfluorohexanoic Acid (PFHxA)	--	2.5	3.2	4.3	7.0	3.5	2.2	2.0	2.7	3.0	1.7 J	2.7	
Perfluorobutane Sulfonic Acid (PFBS)	670,000	<2.0	3.5	2.8	6.7	3.5	2.5	<2.0	6.3	3.3	2.3	3.1	
Perfluoroheptanoic Acid (PFHpA)	--	<2.0	1.8 J	2.3	5.0	2.9	<2.0	<2.0	2.4	2.7	<4.1	0.91 J	
Perfluoropentane Sulfonic Acid (PFPeS)	--	<2.0	<2.0	<2.1	<2.1	<2.0	<2.0	<2.0	<1.9	<1.9	<2.1	<2.0	
6:2 Fluorotelomer Sulfonic Acid (6:2 FTSA)	--	<2.0	<2.0	<2.1	<2.1	<2.0	<2.0	<2.0	<1.9	<1.9	<2.1	<2.0	
Perfluorooctanoic Acid (PF ₈ OA)	170	<2.0	4.8	8.4	15	5.1	2.1	<2.0	4.7	6.0	1.6 J	3.4	
Perfluorohexane Sulfonic Acid (PFHxS)	210	<2.0	3.5	1.8 J	4.5	2.1	<2.0	<2.0	<1.9	<1.9	<2.1	1.7 J	
Perfluorohexane Sulfonic Acid - LN (PFHxS-LN)	--	<2.0	2.5	<2.1	3.7	<2.0	<2.0	<2.0	<1.9	<1.9	<2.1	1.1 J	
Perfluorohexane Sulfonic Acid - BR (PFHxS-BR)	--	<2.0	<2.0	<2.1	<2.1	<2.0	<2.0	<2.0	<1.9	<1.9	<2.1	<2.0	
Perfluorononanoic Acid (PFNA)	30	<2.0	<2.0	<2.1	<2.1	<2.0	<2.0	<2.0	<1.9	<1.9	<2.1	1.2 J	
8:2 Fluorotelomer Sulfonic Acid (8:2 FTSA)	--	<2.0	<2.0	<2.1	<2.1	<2.0	<2.0	<2.0	<1.9	<1.9	<2.1	<2.0	
Perfluoroheptane Sulfonic Acid (PFHpS)	--	<2.0	<2.0	<2.1	<2.1	<2.0	<2.0	<2.0	<1.9	<1.9	<2.1	<2.0	
Perfluorodecanoic Acid (PFDA)	--	<2.0	<2.0	<2.1	<2.1	<2.0	<2.0	<2.0	<1.9	<1.9	<2.1	<2.0	
N-methyl Perfluorooctanesulfonamidoacetic Acid (N-MeFOSAA)	--	<2.0	<2.0	<2.1	<2.1	<2.0	<2.0	<2.0	<1.9	<1.9	<2.1	<2.0	
N-Ethyl Perfluorooctane Sulfonamidoacetic Acid (EtFOSAA)	--	<3.9	<4.0	<4.1	<4.1	<4.0	<4.0	<4.0	<3.9	<3.8	<4.1	<4.0	
Perfluorooctane Sulfonic Acid (PFOS)	12	20	25	30	39	21	12	6.3	24	33	17	52	
Perfluorooctane Sulfonic Acid (PFOS-LN)	--	16	17	20	24	13	7.1	3.8	14	22	12	38	
Perfluorooctane Sulfonic Acid (PFOS-BR)	--	4.0	6.7	9.1	14	8	5.4	2.5	9.3	10	4.3	13	
Perfluoroundecanoic Acid (PFUnDA)	--	<2.0	<2.0	<2.1	<2.1	<2.0	<2.0	<2.0	<1.9	<1.9	<2.1	<2.0	
Perfluorononane Sulfonic Acid (PFNS)	--	<2.0	<2.0	<2.1	<2.1	<2.0	<2.0	<2.0	<1.9	<1.9	<2.1	<2.0	
Perfluorododecanoic Acid (PFDoDA)	--	<2.0	<2.0	<2.1	<2.1	<2.0	<2.0	<2.0	<1.9	<1.9	<2.1	<2.0	
Perfluorodecane Sulfonic Acid (PFDS)	--	<2.0	<2.0	<2.1	<2.1	<2.0	<2.0	<2.0	<1.9	<1.9	<2.1	<2.0	
Perfluorotridecanoic Acid (PFTrDA)	--	<2.0	<2.0	<2.1	<2.1	<2.0	<2.0	<2.0	<1.9	<1.9	<2.1	<2.0	
Perfluorooctane Sulfonamide (FOSA)	--	<2.0	<2.0	<2.1	<2.1	<2.0	<2.0	<2.0	<1.9	<1.9	<2.1	<2.0	
Perfluorotetradecanoic Acid (PFTeDA)	--	<3.9	<4.0	<4.1	<4.1	<4.0	<4.0	<4.0	<3.9	<3.8	<4.1	<4.0	
11-chlorooicosafluoro-3-oxaundecane-1-sulfonic acid (11Cl-PF3OUdS)	--	<2.0	<2.0	<2.1	<2.1	<2.0	<2.0	<2.0	<1.9	<1.9	<2.1	<2.0	
9-chlorohexadecafluoro-3-oxanone1-sulfonic acid (9Cl-PF3ONS)	--	<2.0	<2.0	<2.1	<2.1	<2.0	<2.0	<2.0	<1.9	<1.9	<2.1	<2.0	
4,8-dioxa-3H-perfluorononanoic acid (ADONA)	--	<2.0	<2.0	<2.1	<2.1	<2.0	<2.0	<2.0	<1.9	<1.9	<2.1	<2.0	
Hexafluoropropylene oxide dimer (HFPO-DA)	--	<3.9	<10	<4.1	<10	<10	<10	<2.0	<1.9	<1.9	<10	<10	
3-Perfluoroheptyl propanoic acid (FHpPA (7:3 FTCA))	--	--	--	--	--	--	--	--	<3.9	<3.8	<10	<10	
3-Perfluoropentyl propanoic acid (FPePA (5:3 FTCA))	--	--	--	--	--	--	--	--	<3.9	<3.8	<10	<10	
3-Perfluoropropyl propanoic acid (FPrPA (3:3 FTCA))	--	--	--	--	--	--	--	--	<3.9	<3.8	<10	<10	
Perfluorobutanesulfonamide (PFBSA)	--	--	--	--	--	--	--	--	<1.9	<1.9	0.70 J	<2.0	
Perfluoro-4-ethylcyclohexanesulfonate (PFECHS)	--	--	--	--	--	--	--	--	9.0	5.4	4.6	12	
Perfluorohexanesulfonamide (PFHxSA)	--	--	--	--	--	--	--	--	<1.9	<1.9	<2.1	<2.0	
Total Per-and Polyfluoroalkyl Substances	--	22.5	43.4	65.7	94.4	41.6	18.8	8.3	52.1	53.4	27.9	86.7	

- Notes
- 1) Detections in **bold**.
 - 2) Concentrations in ng/L.
 - 3) < = Not detected at specified reporting limit.
 - 4) -- = Not analyzed/No criteria.
 - 5) Dup = Duplicate sample.
 - 6) EGLE Part 201 Groundwater Generic Cleanup Criteria and Screening Levels, October 12, 2023.
 - 7) Concentration above the groundwater surface water interface (GSI) criteria are highlighted in yellow.
 - 8) B - Compound also found in associated method blank.
 - 9) I - Matrix interference with internal standard.
 - 10) J - Estimated value less than reporting limit, but greater than MDL.
 - 11) X - Elevated reporting limit due to matrix interference.
 - 12) Light gray header is most recent sampling event result.
 - 13) QA/QC Samples were either not detected above the reporting limit or below the EGLE Part 201 Groundwater Generic Cleanup Criteria.

TABLE 1
RACER Trust - Coldwater Road Peregrine Facilities
Per-and Polyfluoroalkyl Substances Sampling Results - Storm Water Samples South Portion of Site

Coldwater Road - Storm Water Samples - South Portion of Site

Perfluorinated Compound	Well/Sample ID: EGLE Part 201 Generic Cleanup Criteria and Screening Levels GSI	SS-15	SS-15	SS-15	SS-15	SS-15	SS-15	SS-16	SS-16	SS-16	SS-16	SS-16
		(Storm Sewer)	(Storm Sewer)	(Storm Sewer)	(Storm Sewer)	(Storm Sewer)	(Storm Sewer)	(Storm Sewer)	(Storm Sewer)	(Storm Sewer)	(Storm Sewer)	(Storm Sewer)
Sample Date:		8/4/2022	1/4/2023	3/23/2023	6/27/2023	12/18/2023	6/17/2024	1/4/2023	3/23/2023	6/27/2023	12/18/2023	6/17/2024
Perfluorobutanoic Acid (PFBA)	--	<10	<10	<9.8	10	<9.8	<9.6	<10	<11	10	<9.4	<10
Perfluoropentanoic Acid (PFPeA)	--	4.1 J	1.8 J	<3.9	<3.9	<3.9	<4.6 X	<4.2	<4.3	<3.8	<3.8	2.8 J
4:2 Fluorotelomer Sulfonic Acid (4:2 FTSA)	--	<2.1	<2.0	<2.0	<2.0	<2.0	<1.9	<2.1	<2.1	<1.9	<1.9	<2.0
Perfluorohexanoic Acid (PFHxA)	--	3.5	3.2	1.7 J	1.9 J	2.0	3.2	2.8	<2.1	<1.9	2.1	2.6
Perfluorobutane Sulfonic Acid (PFBS)	670,000	3.5	3.1	1.7 J	4.3	1.4 J	1.9	2.3	<2.1	2.5	1.2 J	1.5 J
Perfluoroheptanoic Acid (PFHpA)	--	1.8 J	1.6 J	<2.0	<2.0	<3.9	1.0 J	<2.1	<2.1	<1.9	<3.8	0.96 J
Perfluoropentane Sulfonic Acid (PFPeS)	--	<2.1	<2.0	<2.0	<2.0	<2.0	<1.9	<2.1	<2.1	<1.9	<1.9	<2.0
6:2 Fluorotelomer Sulfonic Acid (6:2 FTSA)	--	<2.1	<2.0	<2.0	<2.0	<2.0	<1.9	<2.1	<2.1	<1.9	<1.9	<2.0
Perfluorooctanoic Acid (PFOA)	170	5.5	2.9	<2.0	3.2	0.99 J	3.6	3.2	<2.1	2.0	1.6 J	3.4
Perfluorohexane Sulfonic Acid (PFHxS)	210	2.9	<2.0	<2.0	<2.0	<2.0	0.99 J	<2.1	<2.1	<1.9	<1.9	1.6 J
Perfluorohexane Sulfonic Acid - LN (PFHxS-LN)	--	2.2	<2.0	<2.0	<2.0	<2.0	0.96 J	<2.1	<2.1	<1.9	<1.9	<2.0
Perfluorohexane Sulfonic Acid - BR (PFHxS-BR)	--	<2.1	<2.0	<2.0	<2.0	<2.0	<1.9	<2.1	<2.1	<1.9	<1.9	<2.0
Perfluorononanoic Acid (PFNA)	30	<2.1	<2.0	<2.0	<2.0	<2.0	<1.9	<2.1	<2.1	<1.9	<1.9	<2.0
8:2 Fluorotelomer Sulfonic Acid (8:2 FTSA)	--	<2.1	<2.0	<2.0	<2.0	<2.0	<1.9	<2.1	<2.1	<1.9	<1.9	<2.0
Perfluoroheptane Sulfonic Acid (PFHpS)	--	<2.1	<2.0	<2.0	<2.0	<2.0	<1.9	<2.1	<2.1	<1.9	<1.9	<2.0
Perfluorodecanoic Acid (PFDA)	--	<2.1	<2.0	<2.0	<2.0	<2.0	<1.9	<2.1	<2.1	<1.9	<1.9	<2.0
N-methyl Perfluorooctanesulfonamidoacetic Acid (N-MeFOSAA)	--	<2.1	<2.0	<2.0	<2.0	<2.0	<1.9	<2.1	<2.1	<1.9	<1.9	<2.0
N-Ethyl Perfluorooctane Sulfonamidoacetic Acid (EtFOSAA)	--	<4.1	<4.1	<3.9	<3.9	<3.9	<3.8	<4.2	<4.3	<3.8	<3.8	<4.0
Perfluorooctane Sulfonic Acid (PFOS)	12	220	100	29	86	23	100	99	27	63	30	82
Perfluorooctane Sulfonic Acid (PFOS-LN)	--	170	72	22	56	17	79	72	21	39	23	66
Perfluorooctane Sulfonic Acid (PFOS-BR)	--	50	27	6.8	28	5.3	21	27	5.1	23	7.3	13
Perfluoroundecanoic Acid (PFUnDA)	--	<2.1	<2.0	<2.0	<2.0	<2.0	<1.9	<2.1	<2.1	<1.9	<1.9	<2.0
Perfluorononane Sulfonic Acid (PFNS)	--	<2.1	<2.0	<2.0	<2.0	<2.0	<1.9	<2.1	<2.1	<1.9	<1.9	<2.0
Perfluorododecanoic Acid (PFDoDA)	--	<2.1	<2.0	<2.0	<2.0	<2.0	<1.9	<2.1	<2.1	<1.9	<1.9	<2.0
Perfluorodecane Sulfonic Acid (PFDS)	--	<2.1	<2.0	<2.0	<2.0	<2.0	<1.9	<2.1	<2.1	<1.9	<1.9	<2.0
Perfluorotridecanoic Acid (PFTrDA)	--	<2.1	<2.0	<2.0	<2.0	<2.0	<1.9	<2.1	<2.1	<1.9	<1.9	<2.0
Perfluorooctane Sulfonamide (FOSA)	--	<2.1	<2.0	<2.0	<2.0	<2.0	<1.9	<2.1	<2.1	<1.9	<1.9	<2.0
Perfluorotetradecanoic Acid (PFTeDA)	--	<4.1	<4.1	<4.1	<3.9	<3.9	<3.8	<4.2	<4.3	<3.8	<3.8	<4.0
11-chloroicosafluoro-3-oxaundecane-1-sulfonic acid (11Cl-PF3OUdS)	--	<2.1	<2.0	<2.0	<2.0	<2.0	<1.9	<2.1	<2.1	<1.9	<1.9	<2.0
9-chlorohexadecafluoro-3-oxanone1-sulfonic acid (9Cl-PF3ONS)	--	<2.1	<2.0	<2.0	<2.0	<2.0	<1.9	<2.1	<2.1	<1.9	<1.9	<2.0
4,8-dioxa-3H-perfluorononanoic acid (ADONA)	--	<2.1	<2.0	<2.0	<2.0	<2.0	<1.9	<2.1	<2.1	<1.9	<1.9	<2.0
Hexafluoropropylene oxide dimer (HFPO-DA)	--	<10	<10	<2.0	<2.0	<9.8	<9.6	<10	<2.0	<1.9	<1.9	<10
3-Perfluoroheptyl propanoic acid (FHpPA (7:3 FTCA))	--	--	--	--	<3.9	<9.8	<9.6	--	--	<3.8	<9.4	<10
3-Perfluoropentyl propanoic acid (FPePA (5:3 FTCA))	--	--	--	--	<3.9	<9.8	<9.6	--	--	<3.8	<9.4	<10
3-Perfluoropropyl propanoic acid (FPpPA (3:3 FTCA))	--	--	--	--	<3.9	<9.8	<9.6	--	--	<3.8	<9.4	<10
Perfluorobutanesulfonamide (PFBSA)	--	--	--	--	1.2 J	0.62 J	<1.9	--	--	<1.9	0.62 J	<2.0
Perfluoro-4-ethylcyclohexanesulfonate (PFECHS)	--	--	--	--	20	6.0	27	--	--	15	9.1	17
Perfluorohexanesulfonamide (PFHxSA)	--	--	--	--	<2.0	<2.0	<1.9	--	--	<1.9	<1.9	<2.0
Total Per-and Polyfluoroalkyl Substances	--	241.3	112.6	32.4	126.6	34.0	137.7	107.3	27.0	92.5	44.6	111.9

- Notes
- 1) Detections in **bold**.
 - 2) Concentrations in ng/L.
 - 3) < = Not detected at specified reporting limit.
 - 4) -- = Not analyzed/No criteria.
 - 5) Dup = Duplicate sample.
 - 6) EGLE Part 201 Groundwater Generic Cleanup Criteria and Screening Levels, October 12, 2023.
 - 7) Concentration above the groundwater surface water interface (GSI) criteria are highlighted in yellow.
 - 8) B - Compound also found in associated method blank.
 - 9) I - Matrix interference with internal standard.
 - 10) J - Estimated value less than reporting limit, but greater than MDL.
 - 11) X - Elevated reporting limit due to matrix interference.
 - 12) Light gray header is most recent sampling event result.
 - 13) QA/QC Samples were either not detected above the reporting limit or below the EGLE Part 201 Groundwater Generic Cleanup Criteria.

TABLE 1
RACER Trust - Coldwater Road Peregrine Facilities
Per-and Polyfluoroalkyl Substances Sampling Results - Storm Water Samples South Portion of Site

Coldwater Road - Storm Water Samples - South Portion of Site

Perfluorinated Compound	Well/Sample ID: EGLE Part 201 Generic Cleanup Criteria and Screening Levels GSI	SS-19	SS-20	SS-22	SS-23	SS-23	SS-23	MH-10E	MH-10E
		(Storm Sewer)	(Storm Sewer)	(Storm Sewer)	(Storm Sewer)	(Storm Sewer)	(Storm Sewer)	(Storm Sewer)	(Storm Sewer)
Sample Date:		3/23/2023	3/23/2023	8/7/2023	8/7/2023	12/18/2023	6/17/2024	3/19/2020	8/3/2020
Perfluorobutanoic Acid (PFBA)	--	<10	<9.7	<10	<15 X	<9.6	6.8 J	<9.8	<9.9
Perfluoropentanoic Acid (PFPeA)	--	1.9 J	<3.9	<4.0	2.2 J	<3.8	2.0 J	<9.8	1.4 J
4:2 Fluorotelomer Sulfonic Acid (4:2 FTSA)	--	<2.0	<1.9	<2.0	<2.0	<1.9	<2.0	<9.8	<2.0
Perfluorohexanoic Acid (PFHxA)	--	2.0 J	<1.9	2.0 J	1.8 J	1.5 J	3.9	<9.8	2.9
Perfluorobutane Sulfonic Acid (PFBS)	670,000	<2.0	<1.9	2.3	2.5	2.2	2.6	<9.8	1.9 J
Perfluoroheptanoic Acid (PFHpA)	--	1.5 J	<2.3 X	<2.0	1.9 J	<3.8	0.82 J	<9.8	2.0
Perfluoropentane Sulfonic Acid (PFPeS)	--	<2.0	<1.9	<2.0	<2.0	<1.9	<2.0	<9.8	<2.0
6:2 Fluorotelomer Sulfonic Acid (6:2 FTSA)	--	<2.0	4.3	<2.0	<2.0	<1.9	<2.0	<9.8	<2.0
Perfluorooctanoic Acid (PFOA)	170	<2.0	<1.9	3.2	5.3	1.6 J	4.1	<9.8	4.8
Perfluorohexane Sulfonic Acid (PFHxS)	210	<2.0	<1.9	<2.0	<2.0	1.1 J	3.1	<9.8	<2.0
Perfluorohexane Sulfonic Acid - LN (PFHxS-LN)	--	<2.0	<1.9	<2.0	<2.0	1.1 J	2.0	<9.8	<2.0
Perfluorohexane Sulfonic Acid - BR (PFHxS-BR)	--	<2.0	<1.9	<2.0	<2.0	<1.9	<2.0	<9.8	<2.0
Perfluorononanoic Acid (PFNA)	30	<2.0	<1.9	<2.0	<2.0	<1.9	0.98 J	<9.8	<2.0
8:2 Fluorotelomer Sulfonic Acid (8:2 FTSA)	--	<2.0	<1.9	<2.0	<2.0	<1.9	<2.0	<9.8	<2.0
Perfluoroheptane Sulfonic Acid (PFHpS)	--	<2.0	<1.9	<2.0	<2.0	<1.9	1.0 J	<9.8	<2.0
Perfluorodecanoic Acid (PFDA)	--	<2.0	<1.9	<2.0	<2.0	<1.9	<2.0	<9.8	<2.0
N-methyl Perfluorooctanesulfonamidoacetic Acid (N-MeFOSAA)	--	<2.0	<1.9	<2.0	<2.0	<1.9	<2.0	<9.8	<2.0
N-Ethyl Perfluorooctane Sulfonamidoacetic Acid (EtFOSAA)	--	<4.0	<3.9	<4.0	<3.9	<3.8	<3.9	<9.8	<3.9
Perfluorooctane Sulfonic Acid (PFOS)	12	5.6	3.6	320	60	32	92	70	61
Perfluorooctane Sulfonic Acid (PFOS-LN)	--	3.3	1.9 J	260	45	22	66	49	44
Perfluorooctane Sulfonic Acid (PFOS-BR)	--	2.2	<1.9	61	14	9.4	23	19	14
Perfluoroundecanoic Acid (PFUnDA)	--	<2.0	<1.9	<2.0	<2.0	<1.9	<2.0	<9.8	<2.0
Perfluorononane Sulfonic Acid (PFNS)	--	<2.0	<1.9	<2.0	<2.0	<1.9	<2.0	<9.8	<2.0
Perfluorododecanoic Acid (PFDoDA)	--	<2.0	<1.9	<2.0	<2.0	<1.9	<2.0	<9.8	<2.0
Perfluorodecane Sulfonic Acid (PFDS)	--	<2.0	<1.9	<2.0	<2.0	<1.9	<2.0	<9.8	<2.0
Perfluorotridecanoic Acid (PFTrDA)	--	<2.0	<1.9	<2.0	<2.0	<1.9	<2.0	<9.8	<2.0
Perfluorooctane Sulfonamide (FOSA)	--	<2.0	<1.9	<2.0	<2.0	<1.9	<2.0	<9.8	<2.0
Perfluorotetradecanoic Acid (PFTeDA)	--	<4.0	<3.9	<4.0	<3.9	<3.8	<3.9	<9.8	<3.9
11-chlorooicosafluoro-3-oxaundecane-1-sulfonic acid (11Cl-PF30Uds)	--	<2.0	<1.9	<2.0	<2.0	<1.9	<2.0	<9.8	<2.0
9-chlorohexadecafluoro-3-oxanone1-sulfonic acid (9Cl-PF30NS)	--	<2.0	<1.9	<2.0	<2.0	<1.9	<2.0	<9.8	<2.0
4,8-dioxa-3H-perfluorononanoic acid (ADONA)	--	<2.0	<1.9	<2.0	<2.0	<1.9	<2.0	<9.8	<2.0
Hexafluoropropylene oxide dimer (HFPO-DA)	--	<2.0	<1.9	<2.0	<2.0	<9.6	<9.8	<9.8	<2.0
3-Perfluoroheptyl propanoic acid (FHpPA (7:3 FTCA))	--	--	--	<4.0	<3.9	<9.6	<9.8	--	--
3-Perfluoropentyl propanoic acid (FPePA (5:3 FTCA))	--	--	--	<4.0	<3.9	<9.6	<9.8	--	--
3-Perfluoropropyl propanoic acid (FPrPA (3:3 FTCA))	--	--	--	<4.0	<3.9	<9.6	<9.8	--	--
Perfluorobutanesulfonamide (PFBSA)	--	--	--	<2.0	<2.0	0.74 J	<2.0	--	--
Perfluoro-4-ethylcyclohexanesulfonate (PFECHS)	--	--	--	49	14	20	51	--	--
Perfluorohexanesulfonamide (PFHxSA)	--	--	--	<2.0	<2.0	<1.9	<2.0	--	--
Total Per-and Polyfluoroalkyl Substances	--	11.0	7.9	376.5	87.7	59.1	168.3	70.0	74.0

Notes

- 1) Detections in **bold**.
- 2) Concentrations in na/L.
- 3) < = Not detected at specified reporting limit.
- 4) -- = Not analyzed/No criteria.
- 5) Dup = Duplicate sample.
- 6) EGLE Part 201 Groundwater Generic Cleanup Criteria and Screening Levels, October 12, 2023.
- 7) Concentration above the groundwater surface water interface (GSI) criteria are highlighted in yellow.
- 8) B - Compound also found in associated method blank.
- 9) I - Matrix interference with internal standard.
- 10) J - Estimated value less than reporting limit, but greater than MDL.
- 11) X - Elevated reporting limit due to matrix interference.
- 12) Light gray header is most recent sampling event result.
- 13) QA/QC Samples were either not detected above the reporting limit or below the EGLE Part 201 Groundwater Generic Cleanup Criteria.

TABLE 1
RACER Trust - Coldwater Road Peregrine Facilities
Per-and Polyfluoroalkyl Substances Sampling Results - Storm Water Samples South Portion of Site

Coldwater Road - Storm Water Samples - South Portion of Site

Perfluorinated Compound	Well/Sample ID:	EGLE Part 201 Generic Cleanup Criteria and Screening Levels GSI	MH-10E-W	MH-10E-W	MH-10E-W	MH-10E-W	MH-10E-W	MH-10E-W	MH-10E-W	MH-10E-W	MH-10E-W
			(Storm Sewer)	(Storm Sewer)	(Storm Sewer)	(Storm Sewer)	(Storm Sewer)	(Storm Sewer)	(Storm Sewer)	(Storm Sewer)	(Storm Sewer)
	Sample Date:		8/3/2020	12/18/2020	3/11/2021	8/4/2022	1/4/2023	3/23/2023	6/27/2023	12/18/2023	6/17/2024
Perfluorobutanoic Acid (PFBA)	--	--	<9.8	<10	<10	<9.8	<9.8	<10	10	<9.8	8.0 J
Perfluoropentanoic Acid (PFPeA)	--	--	1.3 J	<4.2	<4.1	3.5 J	<3.9	1.1 J	3.5 J	<3.9	1.9 J
4:2 Fluorotelomer Sulfonic Acid (4:2 FTSA)	--	--	<2.0	<2.1	<2.1	<2.0	<2.0	<2.0	<1.9	<2.0	<1.9
Perfluorohexanoic Acid (PFHxA)	--	--	2.2	<2.1	<2.1	3.2	2.9	<2.0	3.5	2.2	2.6
Perfluorobutane Sulfonic Acid (PFBS)	670,000	--	4.0	4.7	<2.1	3.5	1.9 J	<2.0	7.2	3.7	3.5
Perfluoroheptanoic Acid (PFHpA)	--	--	1.6 J	<2.1	<2.1	2.1	1.4 J	<2.0	2.5	<3.9	1.5 J
Perfluoropentane Sulfonic Acid (PFPeS)	--	--	<2.0	<2.1	<2.1	<2.0	<2.0	<2.0	<1.9	<2.0	<1.9
6:2 Fluorotelomer Sulfonic Acid (6:2 FTSA)	--	--	<2.0	<2.1	<2.1	<2.0	<2.0	<2.0	<1.9	<2.0	<1.9
Perfluorooctanoic Acid (PF ₈ OA)	170	--	5.8	<2.1	<2.1	6.6	2.7	<2.0	6.9	3.4	5.5
Perfluorohexane Sulfonic Acid (PFHxS)	210	--	2.2	<2.1	<2.1	<2.0	<2.0	<2.0	1.5 J	<2.0	1.1 J
Perfluorohexane Sulfonic Acid - LN (PFHxS-LN)	--	--	1.7 J	<2.1	<2.1	<2.0	<2.0	<2.0	1.5 J	<2.0	<1.9
Perfluorohexane Sulfonic Acid - BR (PFHxS-BR)	--	--	<2.0	<2.1	<2.1	<2.0	<2.0	<1.9	<2.0	<2.0	<1.9
Perfluorononanoic Acid (PFNA)	30	--	<2.0	<2.1	<2.1	<2.0	<2.0	<2.0	2.0	<2.0	1.0 J
8:2 Fluorotelomer Sulfonic Acid (8:2 FTSA)	--	--	<2.0	<2.1	<2.1	<2.0	<2.0	<2.0	<1.9	<2.0	<1.9
Perfluoroheptane Sulfonic Acid (PFHpS)	--	--	<2.0	<2.1	<2.1	<2.0	<2.0	<2.0	<1.9	<2.0	<1.9
Perfluorodecanoic Acid (PFDA)	--	--	<2.0	<2.1	<2.1	<2.0	<2.0	<2.0	<1.9	<2.0	<1.9
N-methyl Perfluorooctanesulfonamidoacetic Acid (N-MeFOSAA)	--	--	<2.0	<2.1	<2.1	<2.0	<2.0	<2.0	<1.9	<2.0	<1.9
N-Ethyl Perfluorooctane Sulfonamidoacetic Acid (EtFOSAA)	--	--	<3.9	<4.2	<4.1	<3.9	<3.9	<4.0	<3.8	<3.9	<3.9
Perfluorooctane Sulfonic Acid (PFOS)	12	--	39	10	3.2	15	8.1	5.7	58	22	27
Perfluorooctane Sulfonic Acid (PFOS-LN)	--	--	24	3.5	<2.1	8.3	4.5	3.9	39	14	17
Perfluorooctane Sulfonic Acid (PFOS-BR)	--	--	12	5.9	<2.1	6.1	3.4	<2.0	18	7.2	8.4
Perfluoroundecanoic Acid (PFUnDA)	--	--	<2.0	<2.1	<2.1	<2.0	<2.0	<2.0	<1.9	<2.0	<1.9
Perfluorononane Sulfonic Acid (PFNS)	--	--	<2.0	<2.1	<2.1	<2.0	<2.0	<2.0	<1.9	<2.0	<1.9
Perfluorododecanoic Acid (PFDoDA)	--	--	<2.0	<2.1	<2.1	<2.0	<2.0	<2.0	<1.9	<2.0	<1.9
Perfluorodecane Sulfonic Acid (PFDS)	--	--	<2.0	<2.1	<2.1	<2.0	<2.0	<2.0	<1.9	<2.0	<1.9
Perfluorotridecanoic Acid (PFTriDA)	--	--	<2.0	<2.1	<2.1	<2.0	<2.0	<2.0	<1.9	<2.0	<1.9
Perfluorooctane Sulfonamide (FOSA)	--	--	<2.0	<2.1	<2.1	<2.0	<2.0	<2.0	<1.9	<2.0	<1.9
Perfluorotetradecanoic Acid (PFTeDA)	--	--	<3.9	<4.2	<4.1	<3.9	<3.9	<4.0	<3.8	<3.9	<3.9
11-chlorooicosafluoro-3-oxaundecane-1-sulfonic acid (11Cl-PF30UdS)	--	--	<2.0	<2.1	<2.1	<2.0	<2.0	<2.0	<1.9	<2.0	<1.9
9-chlorohexadecafluoro-3-oxanone1-sulfonic acid (9Cl-PF30NS)	--	--	<2.0	<2.1	<2.1	<2.0	<2.0	<2.0	<1.9	<2.0	<1.9
4,8-dioxo-3H-perfluorononanoic acid (ADONA)	--	--	<2.0	<2.1	<2.1	<2.0	<2.0	<2.0	<1.9	<2.0	<1.9
Hexafluoropropylene oxide dimer (HFPO-DA)	--	--	<2.0	<2.0	<2.1	<9.8	<9.8	<2.0	<1.9	<9.8	<9.7
3-Perfluoroheptyl propanoic acid (FHpPA (7:3 FTCA))	--	--	--	--	--	--	--	--	<3.8	<9.8	<9.7
3-Perfluoropentyl propanoic acid (FPePA (5:3 FTCA))	--	--	--	--	--	--	--	--	<3.8	<9.8	<9.7
3-Perfluoropropyl propanoic acid (FPrPA (3:3 FTCA))	--	--	--	--	--	--	--	--	<3.8	<9.8	<9.7
Perfluorobutanesulfonamide (PFBSA)	--	--	--	--	--	--	--	--	<1.9	0.82	<1.9
Perfluoro-4-ethylcyclohexanesulfonate (PFECHS)	--	--	--	--	--	--	--	--	9.5	2.6	2.9
Perfluorohexanesulfonamide (PFHxSA)	--	--	--	--	--	--	--	--	<1.9	<2.0	<1.9
Total Per-and Polyfluoroalkyl Substances	--	--	56.1	14.7	3.2	33.9	17.0	6.8	104.6	34.7	55.0

Notes

- 1) Detections in **bold**.
- 2) Concentrations in ng/L.
- 3) < = Not detected at specified reporting limit.
- 4) -- = Not analyzed/No criteria.
- 5) Dup = Duplicate sample.
- 6) EGLE Part 201 Groundwater Generic Cleanup Criteria and Screening Levels, October 12, 2023.
- 7) Concentration above the groundwater surface water interface (GSI) criteria are highlighted in yellow.
- 8) B - Compound also found in associated method blank.
- 9) I - Matrix interference with internal standard.
- 10) J - Estimated value less than reporting limit, but greater than MDL.
- 11) X - Elevated reporting limit due to matrix interference.
- 12) Light gray header is most recent sampling event result.
- 13) QA/QC Samples were either not detected above the reporting limit or below the EGLE Part 201 Groundwater Generic Cleanup Criteria.

TABLE 2
RACER Trust - Coldwater Road Peregrine Facilities
Per-and Polyfluoroalkyl Substances Sampling Results
Storm Water Samples - West of Site

Coldwater Rd - Storm Water Samples West of Site

Perfluorinated Compound	Well/Sample ID:	EGLE Part 201 Generic Cleanup Criteria and Screening Levels GSI	SS-06 (Storm Sewer)	SS-06 (Storm Sewer)	SS-06 (Storm Sewer)	SS-DUP- 031121 (SS-06) Storm Sewer	SS-06 (Storm Sewer)	SS-10	SS-10	SS-10	SS-10	SS-10	SS-10
	Sample Date:		8/28/2020	12/18/2020	3/11/2021	3/11/2021	6/29/2021	9/7/2022	1/4/2023	3/23/2023	6/27/2023	12/18/2023	6/17/2024
Perfluorobutanoic Acid (PFBA)	--	--	<10	<9.9	<10	<11	<11	11	<9.7	<9.5	<14 X	<10	<10
Perfluoropentanoic Acid (PFPeA)	--	--	<4.1	20	1.4 J	1.9 J	3.1 J	7.9	<3.9	1.7 J	<6.4 X	2.0 J	<4.1
4:2 Fluorotelomer Sulfonic Acid (4:2 FTSA)	--	--	<2.0	<2.0	<2.1	<2.1	<2.1	<2.1	<1.9	<1.9	<2.0	<2.0	<2.0
Perfluorohexanoic Acid (PFHxA)	--	--	1.8 J	<2.0	<2.1	1.5 J	3.2	7.2	<1.9	1.4 J	3.5	2.0	2.2
Perfluorobutane Sulfonic Acid (PFBS)	670,000	--	2.1	1.6 J	3.3	3.4	4.8	23	<1.9	2.4	3.5	2.4	3.7
Perfluoroheptanoic Acid (PFHpA)	--	--	<2.0	<2.0	<2.1	<2.1	<2.1	5.1	<1.9	<1.9	1.9 J	<4.1	<2.0
Perfluoropentane Sulfonic Acid (PFPeS)	--	--	<2.0	<2.0	3.2	2.2	<2.1	<2.1	<1.9	<1.9	<1.9	<2.0	<2.0
6:2 Fluorotelomer Sulfonic Acid (6:2 FTSA)	--	--	<2.0	<2.0	<2.1	<2.1	<2.1	<4.2	<1.9	<1.9	<1.9	<2.0	<2.0
Perfluorooctanoic Acid (PFOA)	170	--	2.6	<2.0	<2.1	<2.1	2.0 J	9.7	<1.9	<1.9	2.2	0.99 J	2.1
Perfluorohexane Sulfonic Acid (PFHxS)	210	--	3.4	<2.0	9.3	9.4	2.9	4.2	<1.9	1.5 J	<1.9	1.1 J	1.6 J
Perfluorohexane Sulfonic Acid - LN (PFHxS-LN)	--	--	2.4	<2.0	7.3	7.3	2.1 J	3.0	<1.9	<1.9	<1.9	1.1 J	<2.0
Perfluorohexane Sulfonic Acid - BR (PFHxS-BR)	--	--	<2.0	<2.0	<2.1	<2.1	<2.1	<2.1	<1.9	<1.9	<1.9	<2.0	<2.0
Perfluorononanoic Acid (PFNA)	30	--	<2.0	<2.0	<2.1	<2.1	<2.1	<2.1	<1.9	<1.9	<1.9	<2.0	<2.0
8:2 Fluorotelomer Sulfonic Acid (8:2 FTSA)	--	--	<2.0	<2.0	<2.1	<2.1	<2.1	<2.1	<1.9	<1.9	<1.9	<2.0	<2.0
Perfluoroheptane Sulfonic Acid (PFHpS)	--	--	<2.0	<2.0	2.2	<2.1	<2.1	<2.1	<1.9	<1.9	<1.9	<2.0	<2.0
Perfluorodecanoic Acid (PFDA)	--	--	<2.0	<2.0	<2.1	<2.1	<2.1	<2.1	<1.9	<1.9	<1.9	<2.0	<2.0
N-methyl Perfluorooctanesulfonamidoacetic Acid (N-MeFOSAA)	--	--	<2.0	<2.0	<2.1	<2.1	<2.1	<2.1	<1.9	<1.9	<1.9	<2.0	<2.0
N-Ethyl Perfluorooctane Sulfonamidoacetic Acid (EtFOSAA)	--	--	<4.1	<3.9	<4.1	<4.2	<4.2	<4.1	<3.9	<3.9	<3.9	<4.1	<4.1
Perfluorooctane Sulfonic Acid (PFOS)	12	--	85	3.6	180	160	14	17	<1.9	12	11	11	14
Perfluorooctane Sulfonic Acid (PFOS-LN)	--	--	49	<2.0	88	81	5.7	3.8	<1.9	4.8	3.9	2.8	4.0
Perfluorooctane Sulfonic Acid (PFOS-BR)	--	--	37	<2.0	86	76	8.5	13	<1.9	6.8	6.8	7.7	9.0
Perfluoroundecanoic Acid (PFUnDA)	--	--	<2.0	<2.0	<2.1	<2.1	<2.1	<2.1	<1.9	<1.9	<1.9	<2.0	<2.0
Perfluorononane Sulfonic Acid (PFNS)	--	--	<2.0	<2.0	<2.1	<2.1	<2.1	<2.1	<1.9	<1.9	<1.9	<2.0	<2.0
Perfluorododecanoic Acid (PFDoDA)	--	--	<2.0	<2.0	<2.1	<2.1	<2.1	<2.1	<1.9	<1.9	<1.9	<2.0	<2.0
Perfluorodecane Sulfonic Acid (PFDS)	--	--	<2.0	<2.0	<2.1	<2.1	<2.1	<2.1	<1.9	<1.9	<1.9	<2.0	<2.0
Perfluorotridecanoic Acid (PFTDA)	--	--	<2.0	<2.0	<2.1	<2.1	<2.1	<2.1	<1.9	<1.9	<1.9	<2.0	<2.0
Perfluorooctane Sulfonamide (FOSA)	--	--	<2.0	<2.0	<2.1	<2.1	<2.1	<2.1	<1.9	<1.9	<1.9	<2.0	<2.0
Perfluorotetradecanoic Acid (PFTeDA)	--	--	<4.1	<3.9	<4.1	<4.2	<4.2	<4.1	<3.9	<3.8	<3.9	<4.1	<4.1
11-chloroicosafuoro-3-oxaundecane-1-sulfonic acid (11CI-PF30UdS)	--	--	<2.0	<2.0	<2.1	<2.1	<2.1	<2.1	<1.9	<1.9	<1.9	<2.0	<2.0
9-chlorohexadecafluoro-3-oxanone1-sulfonic acid (9CI-PF30NS)	--	--	<2.0	<2.0	<2.1	<2.1	<2.1	<2.1	<1.9	<1.9	<1.9	<2.0	<2.0
4,8-dioxa-3H-perfluorononanoic acid (ADONA)	--	--	<2.0	<2.0	<2.1	<2.1	<2.1	<2.1	<1.9	<1.9	<1.9	<2.0	<2.0
Hexafluoropropylene oxide dimer (HFPO-DA)	--	--	<2.0	<2.0	<2.1	<2.1	<11	<10	<9.7	<1.9	<1.9	<10	<10
3-Perfluoroheptyl propanoic acid (FHpPA (7:3 FTCA))	--	--	--	--	--	--	--	--	--	--	<3.9	<10	<10
3-Perfluoropentyl propanoic acid (FPePA (5:3 FTCA))	--	--	--	--	--	--	--	--	--	--	<3.9	<10	<10
3-Perfluoropropyl propanoic acid (FPpPA (3:3 FTCA))	--	--	--	--	--	--	--	--	--	--	<3.9	<10	<10
Perfluorobutanesulfonamide (PFBSA)	--	--	--	--	--	--	--	--	--	--	<3.9	<10	<10
Perfluoro-4-ethylcyclohexanesulfonate (PFECHS)	--	--	--	--	--	--	--	--	--	--	9.7	19	13
Perfluorohexanesulfonamide (PFHxSA)	--	--	--	--	--	--	--	--	--	--	<1.9	<2.0	<2.0
Total Per-and Polyfluoroalkyl Substances	--	--	94.9	25.2	199.4	178.4	30.0	85.1	0.0	19.0	34.5	39.5	38.2

- Notes
- 1) Detections in **bold**.
 - 2) Concentrations in ng/L.
 - 3) < = Not detected at specified reporting limit.
 - 4) -- = Not analyzed/No criteria.
 - 5) Dup = Duplicate sample.
 - 6) EGLE Part 201 Groundwater Generic Cleanup Criteria and Screening Levels, October 12, 2023.
 - 7) Concentration above the groundwater surface water interface (GSI) criteria are highlighted in yellow.
 - 8) The detection of PFBA in Field Blank-062520 was caused from the centrifuge tubes leaching out PFBA during the extraction process. The 5X Rule was applied to PFBA detections. If the sample value(s) is less than 5 times the blank concentration (5X Rule), then positive results are qualified "U," undetected.
 - 9) B - Compound also found in associated method blank.
 - 10) I - Matrix interference with internal standard.
 - 11) J - Estimated value less than reporting limit, but greater than MDL.
 - 12) X - Elevated reporting limit due to matrix interference.
 - 13) Light gray header is most recent sampling event result.
 - 14) OA/QC Samples were either not detected above the reporting limit or below the EGLE Part 201 Groundwater Generic Cleanup Criteria.

TABLE 2
RACER Trust - Coldwater Road Peregrine Facilities
Per-and Polyfluoroalkyl Substances Sampling Results
Storm Water Samples - West of Site

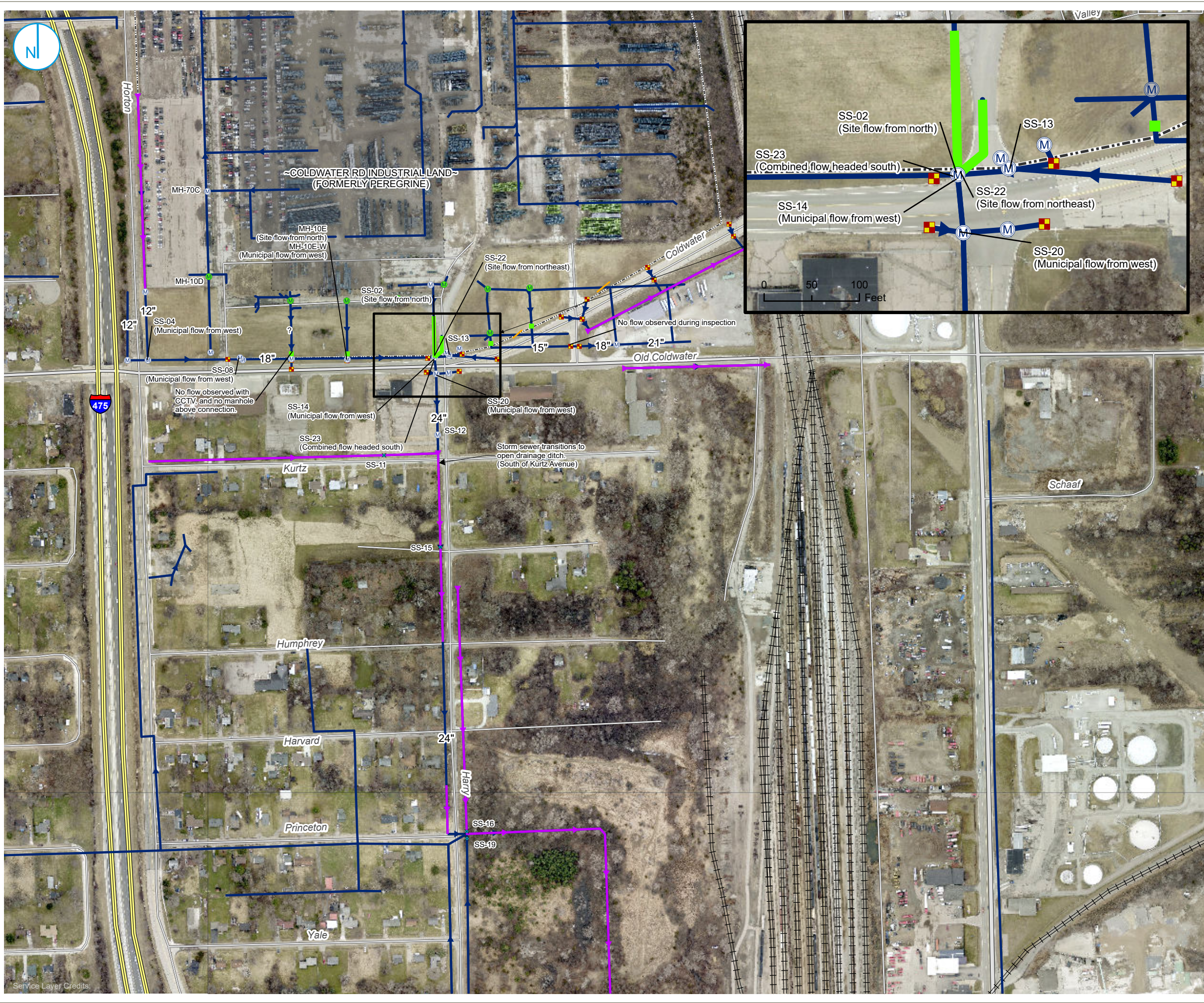
Coldwater Rd - Storm Water Samples West of Site

Perfluorinated Compound	Well/Sample ID:	EGLE Part 201 Generic Cleanup Criteria and Screening Levels GSI	MH-18	MH-18	MH-18	MH-18	MH-18
			(Storm Sewer)	(Storm Sewer)	(Storm Sewer)	(Storm Sewer)	(Storm Sewer)
Sample Date:			11/5/2019	8/3/2020	12/18/2020	3/11/2021	6/29/2021
Perfluorobutanoic Acid (PFBA)	--	--	<20	<10	<10	<9.9	15
Perfluoropentanoic Acid (PFPeA)	--	--	<10	<4.0	<4.1	<3.9	2.4 J
4:2 Fluorotelomer Sulfonic Acid (4:2 FTSA)	--	--	<10	<2.0	<2.0	<2.0	<2.0
Perfluorohexanoic Acid (PFHxA)	--	--	<10	<2.0	<2.0	1.9 J	2.7
Perfluorobutane Sulfonic Acid (PFBS)	670,000	<10	<2.0	4.8	6.8	6.3	6.3
Perfluoroheptanoic Acid (PFHpA)	--	<10	<2.0	<2.0	<2.0	<2.0	<2.0
Perfluoropentane Sulfonic Acid (PFPeS)	--	<10	2.2	8.1	14	13	13
6:2 Fluorotelomer Sulfonic Acid (6:2 FTSA)	--	<10	<2.0	<2.0	<2.0	<2.0	<3.9
Perfluorooctanoic Acid (PF ₈ OA)	170	<10	<2.0	1.8 J	<2.0	<2.0	3.7
Perfluorohexane Sulfonic Acid (PFHxS)	210	15	8.6	33	40	30	30
Perfluorohexane Sulfonic Acid - LN (PFHxS-LN)	--	12	7.4	28	31	24	24
Perfluorohexane Sulfonic Acid - BR (PFHxS-BR)	--	<10	<2.0	4.3	7.9	5.3	5.3
Perfluorononanoic Acid (PFNA)	30	<10	<2.0	<2.0	<2.0	<2.0	<2.0
8:2 Fluorotelomer Sulfonic Acid (8:2 FTSA)	--	<10	<2.0	<2.0	<2.0	<2.0	<2.0
Perfluoroheptane Sulfonic Acid (PFHpS)	--	<10	2.5	9.8	5.5	4.8	4.8
Perfluorodecanoic Acid (PFDA)	--	<10	<2.0	<2.0	<2.0	<2.0	<2.0
N-methyl Perfluorooctanesulfonamidoacetic Acid (N-MeFOSAA)	--	<10	<2.0	<2.0	<2.0	<2.0	<2.0
N-Ethyl Perfluorooctane Sulfonamidoacetic Acid (EtFOSAA)	--	<10	<4.0	<4.1	<3.9	<3.9	<3.9
Perfluorooctane Sulfonic Acid (PFOS)	12	210	240	460	280	310	310
Perfluorooctane Sulfonic Acid (PFOS-LN)	--	110	150	230	130	180	180
Perfluorooctane Sulfonic Acid (PFOS-BR)	--	91	88	230	140	130	130
Perfluoroundecanoic Acid (PFUnDA)	--	<10	<2.0	<2.0	<2.0	<2.0	<2.0
Perfluorononane Sulfonic Acid (PFNS)	--	<10	<2.0	<2.0	<2.0	<2.0	<2.0
Perfluorododecanoic Acid (PFDoDA)	--	<10	<2.0	<2.0	<2.0	<2.0	<2.0
Perfluorodecane Sulfonic Acid (PFDS)	--	<10	<2.0	<2.0	<2.0	<2.0	<2.0
Perfluorotridecanoic Acid (PFTrDA)	--	<10	<2.0	<2.0	<2.0	<2.0	<2.0
Perfluorooctane Sulfonamide (FOSA)	--	<10	<2.0	<2.0	<2.0	<2.0	<2.0
Perfluorotetradecanoic Acid (PFTeDA)	--	<10	<4.0	<4.1	<3.9	<3.9	<3.9
11-chloroicosafauro-3-oxaundecane-1-sulfonic acid (11Cl-PF3OUdS)	--	<10	<2.0	<2.0	<2.0	<2.0	<2.0
9-chlorohexadecafluoro-3-oxanone1-sulfonic acid (9Cl-PF3ONS)	--	<10	<2.0	<2.0	<2.0	<2.0	<2.0
4,8-dioxo-3H-perfluorononanoic acid (ADONA)	--	<10	<2.0	<2.0	<2.0	<2.0	<2.0
Hexafluoropropylene oxide dimer (HFPO-DA)	--	<10	<2.0	<2.0	<2.0	<2.0	<9.9
3-Perfluoroheptyl propanoic acid (FHpPA (7:3 FTCA))	--	--	--	--	--	--	--
3-Perfluoropentyl propanoic acid (FPePA (5:3 FTCA))	--	--	--	--	--	--	--
3-Perfluoropropyl propanoic acid (FPPrPA (3:3 FTCA))	--	--	--	--	--	--	--
Perfluorobutanesulfonamide (PFBSA)	--	--	--	--	--	--	--
Perfluoro-4-ethylcyclohexanesulfonate (PFECHS)	--	--	--	--	--	--	--
Perfluorohexanesulfonamide (PFHxSA)	--	--	--	--	--	--	--
Total Per-and Polyfluoroalkyl Substances	--	--	225.0	253.3	517.5	348.2	387.9

Notes

- 1) Detections in **bold**.
- 2) Concentrations in ng/L.
- 3) < = Not detected at specified reporting limit.
- 4) -- = Not analyzed/No criteria.
- 5) Dup = Duplicate sample.
- 6) EGLE Part 201 Groundwater Generic Cleanup Criteria and Screening Levels, October 12, 2023.
- 7) Concentration above the groundwater surface water interface (GSI) criteria are highlighted in yellow.
- 8) The detection of PFBA in Field Blank-062520 was caused from the centrifuge tubes leaching out PFBA during the extraction process. The 5X Rule was applied to PFBA detections. If the sample value(s) is less than 5 times the blank concentration (5X Rule), then positive results are qualified "U," undetected.
- 9) B - Compound also found in associated method blank.
- 10) I - Matrix interference with internal standard.
- 11) J - Estimated value less than reporting limit, but greater than MDL.
- 12) X - Elevated reporting limit due to matrix interference.
- 13) Light gray header is most recent sampling event result.
- 14) OA/OC Samples were either not detected above the reporting limit or below the EGLE Part 201 Groundwater Generic Cleanup Criteria.

FIGURES



- M ABANDONED MANHOLE
- STORM SEWER DRAIN
- M STORM SEWER MANHOLE
- █ PIPE PLUG
- ✕ SURFACE WATER
- └─ OPEN DRAINAGE DITCH
- └─ STORM SEWER
- TEST PIT
- FORMER BUILDING
- PROPERTY BOUNDARY

0 175 350
Feet

**GENESEE STORM SEWERS
(HORTON ST TO N DORT HWY)**

RACER TRUST
COLDWATER ROAD
FLINT, MICHIGAN

FIGURE 01

RAMBOLL AMERICAS
ENGINEERING SOLUTIONS, INC.
A RAMBOLL COMPANY



Service Layer Credits:



KLEIN STREET AREA STORM SEWER CONFIGURATION

RACER TRUST
 COLDWATER ROAD
 FLINT, MICHIGAN

FIGURE 02

RAMBOLL AMERICAS
 ENGINEERING SOLUTIONS, INC.
 A RAMBOLL COMPANY



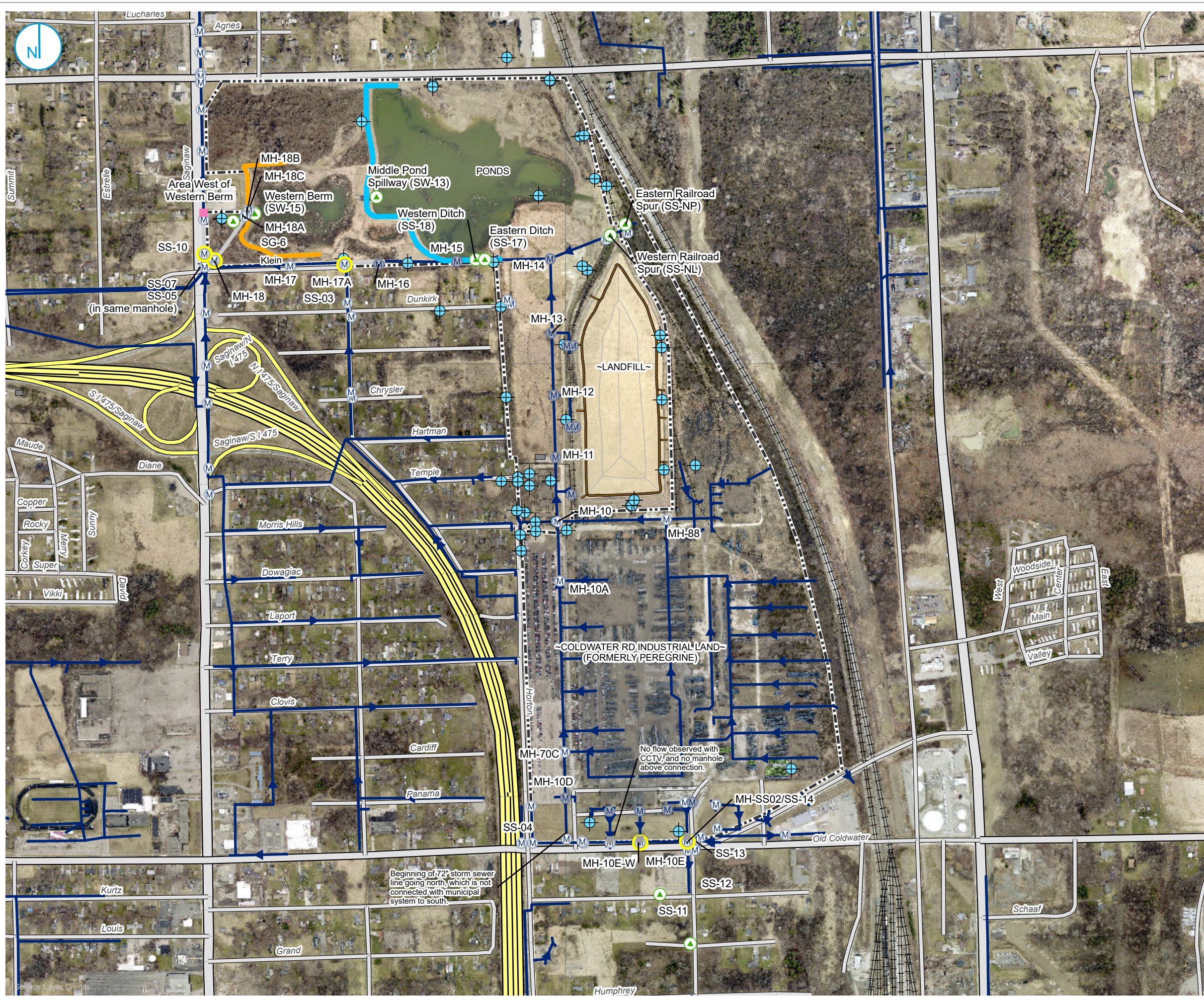
**APPENDIX A
STORM WATER MONITORING
MATRIX AND FIGURE**

TABLE 1
RACER Trust - Coldwater Road
Per- and Polyfluoroalkyl Substances Stormwater Monitoring Matrix

STORM WATER MONITORING LOCATIONS SAMPLE ID / DESCRIPTION	VISUAL FLOW OBSERVATION (YES/NO)	FLOW RATE ESTIMATE (GPM)	SAMPLE COLLECTED FOR PFAS ANALYSIS (YES/NO)	OTHER OBSERVATIONS
SITE & POND AREA	DATE:	Monday, June 17, 2024		
Middle Pond to Western Pond Spillway - Discharge to Western Pond (Sample ID: SW-13)	No flow	--	--	middle pond elevation 788.039'
Western Pond Berm (Sample ID: SW-15)	No flow	--	--	western pond elevation 771.672'
Area West of Western Pond Berm - Check for Poned Water in Area	Yes	--	--	
MH-18C - Receives discharge, if any, from Western pond	No flow	--	--	
MH-18B - Receives water from MH-18C	No flow	--	--	little water in manhole, no flow
MH-18A - Receives water from MH-18B	No flow	--	--	Water discharging from temp system
MH-18 - Receives water from MH-18A, discharge monitoring point (Sample ID: MH-18)	Yes	150-200 gpm	--	Flow due to pond discharge
MH-10 - East of Entrance Gate Along Drive (near OBG MW-4) - Check Water Level	12" below rim	--	--	
RAILROAD SPURS EAST OF PONDS				
Eastern RR Spur - Flow from South to North from Peregrine Property (Sample ID: SS-NP)	No flow	--	--	Some ponded water
Western RR Spur - Flow from South to North from West of Landfill (Sample ID: SS-NL)	No flow	--	--	Some ponded water
DRAINAGE DITCHES WEST OF RMA				
Eastern Ditch - Flow from South (Sample ID: SS-17)	No flow	--	--	
Western Ditch - Flow from South (Sample ID: SS-18)	No flow	--	--	
INDIVIDUAL STORM WATER MANHOLES - Klein Street				
Corner of George St and E Klein St - 72-Inch Line from East - Downstream of MH-16 plug (Sample ID: MH-17A)	No flow from plug	--	--	
Corner of George St and E Klein St - Flow from the South From Neighborhood	Yes	1-2 gpm average	--	
INDIVIDUAL STORM WATER MANHOLES - Saginaw Road				
Northeast Corner of Saginaw Rd and E Klein St - Flow from the South (Sample ID: SS-05)	Yes	--	--	
Northeast Corner of Saginaw Rd and E Klein St - Flow from the East	Yes	--	--	
Northeast Corner of Saginaw Rd and E Klein St - Combined flow toward West Sample ID: SS-07)	Yes	--	--	
North of E Klein St on Eastside of Saginaw Rd - Municipal Flow from North (Sample ID: SS-10)	Yes	1-2 gpm average	YES	
North of E Klein St on Eastside of Saginaw Rd (west of OBG MW-26) - Flow Coming from Site	No flow	--	--	
INDIVIDUAL STORM WATER MANHOLES - Coldwater Road				
Corner of Coldwater Rd and Horton Ave - Municipal Flow from West (Sample ID: SS-04)	Yes	trickle	--	
Coldwater Rd Approx. 170 ft West of MH-10E - Municipal Flow from West (Sample ID: SS-08)	Yes	--	--	
Coldwater Rd Approx. 300 ft West of SS-02 - Municipal Flow from West (Sample ID: MH-10E-W)	Yes	--	YES	
Coldwater Rd Approx. 300 ft West of SS-02 - Check Plugged Pipe - Flow from RACER Site (Sample ID: MH-10E)	No flow from plug	--	--	
Coldwater Rd for Peregrine Site - Municipal Flow from West (Sample ID: SS-14)	Yes	2-3 gpm average to less than average	YES	
Coldwater Rd for Peregrine Site - Check Plugged Pipe - Flow from RACER Site (Sample ID: SS-02)	No flow from plug	--	--	

Precipitation Past 24 hours: 0.45"

Note: -- No sample/information was collected.



- ⊕ MONITORING WELL / PIEZOMETER
- Ⓜ STORM SEWER MANHOLE
- Ⓜ MANHOLE ABANDONED AND PLUGGED
- Ⓜ STORM SEWER SAMPLE LOCATION TO BE SAMPLED
- Ⓜ SURFACE WATER SAMPLE LOCATION
- CATCH BASIN
- STORM SEWER PIPE PLUG
- ➔ STORM SEWER
- SEALED STORM SEWER
- PROPERTY BOUNDARY
- ▭ FORMER BUILDING
- COMPLETED BERM
- MIDDLE POND BERM - ELEV. 792.5

0 325 650
 Feet

**STORM SEWER / MANHOLE
 INSPECTION / SAMPLE
 LOCATIONS**

RACER TRUST
 COLDWATER ROAD
 FLINT, MICHIGAN

FIGURE 01

RAMBOLL AMERICAS ENGINEERING
 SOLUTIONS, INC



Beginning of 72" storm sewer line going north, which is not connected with municipal system to south.

No flow observed with CCTV, and no manhole above connection.

Source Layer Credits:

**APPENDIX B
LABORATORY ANALYTICAL REPORTS**



Analytical Laboratory Report

Report ID: S63238.01(01)
Generated on 06/25/2024

Report to

Attention: Clifford Yantz
Ramboll Americas
2090 Commonwealth Blvd
Ann Arbor, MI 48105

Phone: 313-333-0211 FAX:
Email: Clifford.Yantz@ramboll.com

Additional Contacts: Kevin Schneider, Nicole Pitkorchemny

Report produced by

Merit Laboratories, Inc.
2680 East Lansing Drive
East Lansing, MI 48823

Phone: (517) 332-0167 FAX: (517) 332-6333

Contacts for report questions:
John Lavery (johnlavery@meritlabs.com)
Barbara Ball (bball@meritlabs.com)

Report Summary

Lab Sample ID(s): S63238.01-S63238.08
Project: RACER Coldwater Road
Collected Date(s): 06/17/2024
Submitted Date/Time: 06/17/2024 16:35
Sampled by: Kevin Schneider
P.O. #: 1940008845 TASK 37

Table of Contents

Cover Page (Page 1)
General Report Notes (Page 2)
Report Narrative (Page 2)
Laboratory Accreditations (Page 3)
Qualifier Descriptions (Page 3)
Glossary of Abbreviations (Page 3)
Method Summary (Page 4)
Parameter Summary (Page 5)
Sample Summary (Page 6)

Maya Murshak
Technical Director



Analytical Laboratory Report

General Report Notes

Analytical results relate only to the samples tested, in the condition received by the laboratory.

Methods may be modified for improved performance.

Results reported on a dry weight basis where applicable.

'Not detected' indicates that parameter was not found at a level equal to or greater than the reporting limit (RL).

When MDL results are provided, then 'Not detected' indicates that parameter was not found at a level equal to or greater than the MDL.

40 CFR Part 136 Table II Required Containers, Preservation Techniques and Holding Times for the Clean Water Act specify that samples for acrolein and acrylonitrile, and 2-chloroethylvinyl ether need to be preserved at a pH in the range of 4 to 5 or if not preserved, analyzed within 3 days of sampling.

QA/QC corresponding to this analytical report is a separate document with the same Merit ID reference and is available upon request.

Starred (*) analytes are not NY NELAP accredited.

Samples are held by the lab for 30 days from the final report date unless a written request to hold longer is provided by the client.

Report shall not be reproduced except in full, without the written approval of Merit Laboratories, Inc.

Limits for drinking water samples, are listed as the MCL Limits (Maximum Contaminant Level Concentrations)

PFAS requirement: Section 9.3.8 of U.S. EPA Method 537.1 states "If the method analyte(s) found in the Field Sample is present in the

FRB at a concentration greater than 1/3 the MRL, then all samples collected with that FRB are invalid and must be recollected and reanalyzed."

Samples submitted without an accompanying FRB may not be acceptable for compliance purposes.

Wisconsin PFAs analysis: MDL = LOD; RL = LOQ. LOD and LOQ are adjusted for dilution.

All accreditations/certifications held by this laboratory are listed on page 3. Not all accreditations/certifications are applicable to this report.

For a specific list of accredited analytes, please feel free to contact the laboratory or visit <https://www.meritlabs.com/certifications>.

Report Narrative

There is no additional narrative for this analytical report



Analytical Laboratory Report

Laboratory Accreditations (For Reference Only)

Authority	Accreditation ID
Michigan DEQ	#9956
DOD ELAP & ISO/IEC 17025:2017	#69699 PJLA Testing
WBENC	#2005110032
Ohio VAP	#CL0002
Indiana DOH	#C-MI-07
New York NELAC	#11814
North Carolina DENR	#680
North Carolina DOH	#26702
Pennsylvania DEP	#68-05884
Wisconsin DNR	FID# 399147320

Qualifier Descriptions

Qualifier	Description
!	Result is outside of stated limit criteria
B	Compound also found in associated method blank
E	Concentration exceeds calibration range
F	Analysis run outside of holding time
G	Estimated result due to extraction run outside of holding time
H	Sample submitted and run outside of holding time
I	Matrix interference with internal standard
J	Estimated value less than reporting limit, but greater than MDL
L	Elevated reporting limit due to low sample amount
M	Result reported to MDL not RDL
O	Analysis performed by outside laboratory. See attached report.
R	Preliminary result
S	Surrogate recovery outside of control limits
T	No correction for total solids
X	Elevated reporting limit due to matrix interference
Y	Elevated reporting limit due to high target concentration
b	Value detected less than reporting limit, but greater than MDL
e	Reported value estimated due to interference
j	Analyte also found in associated method blank
o	Associated EIS outside of control limits
p	Benzo(b)Fluoranthene and Benzo(k)Fluoranthene integrated as one peak.
q	Qualifier ion ratio outside of control limits
x	Preserved from bulk sample

Glossary of Abbreviations

Abbreviation	Description
RL/RDL	Reporting Limit
MDL	Method Detection Limit
MS	Matrix Spike
MSD	Matrix Spike Duplicate
SW	EPA SW 846 (Soil and Wastewater) Methods
E	EPA Methods
SM	Standard Methods
LN	Linear
BR	Branched



Analytical Laboratory Report

Method Summary

Method	Version
ASTMD7979-19M	ASTM Method D7979 - 19 Modified (Isotopic Dilution)

Parameter Summary

Parameter	Synonym	Cas #
PFBA	Perfluorobutanoic Acid	375-22-4
PFPeA	Perfluoropentanoic Acid	2706-90-3
4:2 FTSA	4:2 Fluorotelomer Sulfonic Acid	757124-72-4
PFHxA	Perfluorohexanoic Acid	307-24-4
PFBS	Perfluorobutane sulfonic Acid	375-73-5
PFHpA	Perfluoroheptanoic Acid	375-85-9
PFPeS	Perfluoropentane Sulfonic Acid	2706-91-4
6:2 FTSA	6:2 Fluorotelomer Sulfonic Acid	27619-97-2
PFOA	Perfluorooctanoic Acid	335-67-1
PFHxS	Perfluorohexane Sulfonic Acid	355-46-4
PFHxS-LN	Perfluorohexane Sulfonic Acid - LN	355-46-4-LN
PFHxS-BR	Perfluorohexane Sulfonic Acid - BR	355-46-4-BR
PFNA	Perfluorononanoic Acid	375-95-1
8:2 FTSA	8:2 Fluorotelomer Sulfonic Acid	39108-34-4
PFHpS	Perfluoroheptane Sulfonic Acid	375-92-8
PFDA	Perfluorodecanoic Acid	335-76-2
N-MeFOSAA	N-methyl perfluorooctanesulfonamidoacetic acid	2355-31-9
EtFOSAA	N-Ethyl Perfluorooctane Sulfonamidoacetic Acid	2991-50-6
PFOS	Perfluorooctane Sulfonic Acid	1763-23-1
PFOS-LN	Perfluorooctane Sulfonic Acid - LN	1763-23-1-LN
PFOS-BR	Perfluorooctane Sulfonic Acid - BR	1763-23-1-BR
PFUnDA	Perfluoroundecanoic Acid	2058-94-8
PFNS	Perfluorononane Sulfonic Acid	68259-12-1
PFDoDA	Perfluorododecanoic Acid	307-55-1
PFDS	Perfluorodecane Sulfonic Acid	335-77-3
PFTTrDA	Perfluorotridecanoic Acid	72629-94-8
FOSA	Perfluorooctane Sulfonamide	754-91-6
PFTeDA	Perfluorotetradecanoic Acid	376-06-7
11Cl-PF3OUdS	11-chloroeicosafuoro-3-oxaundecane-1-sulfonic acid	763051-92-9
9Cl-PF3ONS	9-chlorohexadecafluoro-3-oxanone1-sulfonic acid	756426-58-1
ADONA	4,8-dioxa-3H-perfluorononanoic acid	919005-14-4
HFPO-DA	Hexafluoropropylene oxide dimer	13252-13-6
FHpPA (7:3 FTCA)	3-Perfluoroheptyl propanoic acid	812-70-4
FPePA (5:3 FTCA)	3-Perfluoropentyl propanoic acid	914637-49-3
FPrPA (3:3 FTCA)	3-Perfluoropropyl propanoic acid	356-02-5
PFBSA	Perfluorobutanesulfonamide	30334-69-1
PFECHS	Perfluoro-4-ethylcyclohexanesulfonate	67584-42-3
PFHxSA	Perfluorohexanesulfonamide	41997-13-1



Analytical Laboratory Report

Sample Summary (8 samples)

Sample ID	Sample Tag	Matrix	Collected Date/Time
S63238.01	SS-10-06172024	Groundwater	06/17/24 14:10
S63238.02	SS-12-06172024	Groundwater	06/17/24 13:40
S63238.03	SS-14-06172024	Groundwater	06/17/24 13:08
S63238.04	SS-15-06172024	Groundwater	06/17/24 12:58
S63238.05	SS-16-06172024	Groundwater	06/17/24 12:45
S63238.06	MH-10E-W-06172024	Groundwater	06/17/24 13:28
S63238.07	SS-23-06172024	Groundwater	06/17/24 13:16
S63238.08	Field Blank-06172024	Groundwater	06/17/24 14:15



Analytical Laboratory Report

Lab Sample ID: S63238.01

Sample Tag: SS-10-06172024

Collected Date/Time: 06/17/2024 14:10

Matrix: Groundwater

COC Reference: 155561

Sample Containers

#	Type	Preservative(s)	Refrigerated?	Arrival Temp. (C)	Thermometer #
1	15mL Centrifuge Tube	None	Yes	14.2	IR

Extraction / Prep.

Parameter	Result	Method	Run Date	Analyst	Flags
Initial wt. (g) / Final wt. (g) / Volume (ml)*	12.31/6.43/12	ASTMD7979-19M	06/19/24 06:00	SRP	

Organics

34 PFAs, Method: ASTMD7979-19M, Run Date: 06/19/24 22:09, Analyst: KCV

Parameter	Result	RL	MDL	Units	Dilution	CAS#	Flags
PFBA*	Not detected	10	2.0	ng/L	2.04	375-22-4	
PFPeA*	Not detected	4.1	1.2	ng/L	2.04	2706-90-3	
4:2 FTSA*	Not detected	2.0	0.20	ng/L	2.04	757124-72-4	
PFHxA*	2.2	2.0	1.2	ng/L	2.04	307-24-4	
PFBS*	3.7	2.0	0.61	ng/L	2.04	375-73-5	
PFHpA*	Not detected	2.0	0.82	ng/L	2.04	375-85-9	
PFPeS*	Not detected	2.0	1.8	ng/L	2.04	2706-91-4	
6:2 FTSA*	Not detected	2.0	1.0	ng/L	2.04	27619-97-2	
PFOA*	2.1	2.0	0.82	ng/L	2.04	335-67-1	
PFHxS*	1.6	2.0	1.0	ng/L	2.04	355-46-4	J
PFHxS-LN*	Not detected	2.0	1.0	ng/L	2.04	355-46-4-LN	
PFHxS-BR*	Not detected	2.0	1.0	ng/L	2.04	355-46-4-BR	
PFNA*	Not detected	2.0	1.0	ng/L	2.04	375-95-1	
8:2 FTSA*	Not detected	2.0	1.2	ng/L	2.04	39108-34-4	
PFHpS*	Not detected	2.0	0.82	ng/L	2.04	375-92-8	
PFDA*	Not detected	2.0	1.2	ng/L	2.04	335-76-2	
N-MeFOSAA*	Not detected	2.0	1.0	ng/L	2.04	2355-31-9	
EtFOSAA*	Not detected	4.1	1.0	ng/L	2.04	2991-50-6	
PFOS*	14	2.0	0.82	ng/L	2.04	1763-23-1	
PFOS-LN*	4.0	2.0	0.82	ng/L	2.04	1763-23-1-LN	
PFOS-BR*	9.0	2.0	0.82	ng/L	2.04	1763-23-1-BR	
PFUnDA*	Not detected	2.0	0.82	ng/L	2.04	2058-94-8	
PFNS*	Not detected	2.0	1.0	ng/L	2.04	68259-12-1	
PFDODA*	Not detected	2.0	0.61	ng/L	2.04	307-55-1	
PFDS*	Not detected	2.0	1.0	ng/L	2.04	335-77-3	
PFTTrDA*	Not detected	2.0	0.82	ng/L	2.04	72629-94-8	
FOSA*	Not detected	2.0	0.82	ng/L	2.04	754-91-6	
PFTeDA*	Not detected	4.1	0.61	ng/L	2.04	376-06-7	
11Cl-PF3OUdS*	Not detected	2.0	1.0	ng/L	2.04	763051-92-9	
9Cl-PF3ONS*	Not detected	2.0	1.0	ng/L	2.04	756426-58-1	
ADONA*	Not detected	2.0	0.61	ng/L	2.04	919005-14-4	
HFPO-DA*	Not detected	10	2.0	ng/L	2.04	13252-13-6	
FHpPA (7:3 FTCA)*	Not detected	10	8.2	ng/L	2.04	812-70-4	
FPePA (5:3 FTCA)*	Not detected	10	4.1	ng/L	2.04	914637-49-3	
FPrPA (3:3 FTCA)*	Not detected	10	4.1	ng/L	2.04	356-02-5	
PFBSA*	1.6	2.0	0.61	ng/L	2.04	30334-69-1	J

J-Estimated value less than reporting limit, but greater than MDL



Analytical Laboratory Report

Lab Sample ID: S63238.01 (continued)

Sample Tag: SS-10-06172024

34 PFAs, Method: ASTMD7979-19M, Run Date: 06/19/24 22:09, Analyst: KCV (continued)

Parameter	Result	RL	MDL	Units	Dilution	CAS#	Flags
PFECHS*	13	2.0	0.82	ng/L	2.04	67584-42-3	
PFHxSA*	Not detected	2.0	0.61	ng/L	2.04	41997-13-1	



Analytical Laboratory Report

Lab Sample ID: S63238.02

Sample Tag: SS-12-06172024

Collected Date/Time: 06/17/2024 13:40

Matrix: Groundwater

COC Reference: 155561

Sample Containers

#	Type	Preservative(s)	Refrigerated?	Arrival Temp. (C)	Thermometer #
1	15mL Centrifuge Tube	None	Yes	14.2	IR

Extraction / Prep.

Parameter	Result	Method	Run Date	Analyst	Flags
Initial wt. (g) / Final wt. (g) / Volume (ml)*	12.27/6.46/12	ASTMD7979-19M	06/19/24 06:00	SRP	

Organics

34 PFAs, Method: ASTMD7979-19M, Run Date: 06/19/24 22:49, Analyst: KCV

Parameter	Result	RL	MDL	Units	Dilution	CAS#	Flags
PFBA*	8.8	10	2.1	ng/L	2.07	375-22-4	J
PFPeA*	1.7	4.1	1.2	ng/L	2.07	2706-90-3	J
4:2 FTSA*	Not detected	2.1	0.21	ng/L	2.07	757124-72-4	
PFHxA*	4.3	2.1	1.2	ng/L	2.07	307-24-4	
PFBS*	2.5	2.1	0.62	ng/L	2.07	375-73-5	
PFHpA*	1.4	2.1	0.83	ng/L	2.07	375-85-9	J
PFPeS*	Not detected	2.1	1.9	ng/L	2.07	2706-91-4	
6:2 FTSA*	Not detected	2.1	1.0	ng/L	2.07	27619-97-2	
PFOA*	4.7	2.1	0.83	ng/L	2.07	335-67-1	
PFHxS*	3.0	2.1	1.0	ng/L	2.07	355-46-4	
PFHxS-LN*	2.3	2.1	1.0	ng/L	2.07	355-46-4-LN	
PFHxS-BR*	Not detected	2.1	1.0	ng/L	2.07	355-46-4-BR	
PFNA*	Not detected	2.1	1.0	ng/L	2.07	375-95-1	
8:2 FTSA*	Not detected	2.1	1.2	ng/L	2.07	39108-34-4	
PFHpS*	Not detected	2.1	0.83	ng/L	2.07	375-92-8	
PFDA*	Not detected	2.1	1.2	ng/L	2.07	335-76-2	
N-MeFOSAA*	Not detected	2.1	1.0	ng/L	2.07	2355-31-9	
EtFOSAA*	Not detected	4.1	1.0	ng/L	2.07	2991-50-6	
PFOS*	100	2.1	0.83	ng/L	2.07	1763-23-1	
PFOS-LN*	74	2.1	0.83	ng/L	2.07	1763-23-1-LN	
PFOS-BR*	25	2.1	0.83	ng/L	2.07	1763-23-1-BR	
PFUnDA*	Not detected	2.1	0.83	ng/L	2.07	2058-94-8	
PFNS*	Not detected	2.1	1.0	ng/L	2.07	68259-12-1	
PFDODA*	Not detected	2.1	0.62	ng/L	2.07	307-55-1	
PFDS*	Not detected	2.1	1.0	ng/L	2.07	335-77-3	
PFTTrDA*	Not detected	2.1	0.83	ng/L	2.07	72629-94-8	
FOSA*	Not detected	2.1	0.83	ng/L	2.07	754-91-6	
PFTeDA*	Not detected	4.1	0.62	ng/L	2.07	376-06-7	
11Cl-PF3OUdS*	Not detected	2.1	1.0	ng/L	2.07	763051-92-9	
9Cl-PF3ONS*	Not detected	2.1	1.0	ng/L	2.07	756426-58-1	
ADONA*	Not detected	2.1	0.62	ng/L	2.07	919005-14-4	
HFPO-DA*	Not detected	10	2.1	ng/L	2.07	13252-13-6	
FHpPA (7:3 FTCA)*	Not detected	10	8.3	ng/L	2.07	812-70-4	
FPePA (5:3 FTCA)*	Not detected	10	4.1	ng/L	2.07	914637-49-3	
FPrPA (3:3 FTCA)*	Not detected	10	4.1	ng/L	2.07	356-02-5	
PFBSA*	0.81	2.1	0.62	ng/L	2.07	30334-69-1	J

J-Estimated value less than reporting limit, but greater than MDL



Analytical Laboratory Report

Lab Sample ID: S63238.02 (continued)

Sample Tag: SS-12-06172024

34 PFAs, Method: ASTMD7979-19M, Run Date: 06/19/24 22:49, Analyst: KCV (continued)

Parameter	Result	RL	MDL	Units	Dilution	CAS#	Flags
PFECHS*	41	2.1	0.83	ng/L	2.07	67584-42-3	
PFHxSA*	Not detected	2.1	0.62	ng/L	2.07	41997-13-1	



Analytical Laboratory Report

Lab Sample ID: S63238.03

Sample Tag: SS-14-06172024

Collected Date/Time: 06/17/2024 13:08

Matrix: Groundwater

COC Reference: 155561

Sample Containers

#	Type	Preservative(s)	Refrigerated?	Arrival Temp. (C)	Thermometer #
1	15mL Centrifuge Tube	None	Yes	14.2	IR

Extraction / Prep.

Parameter	Result	Method	Run Date	Analyst	Flags
Initial wt. (g) / Final wt. (g) / Volume (ml)*	12.40/6.45/12	ASTMD7979-19M	06/19/24 06:00	SRP	

Organics

34 PFAs, Method: ASTMD7979-19M, Run Date: 06/19/24 23:29, Analyst: KCV

Parameter	Result	RL	MDL	Units	Dilution	CAS#	Flags
PFBA*	7.9	10	2.0	ng/L	2.02	375-22-4	J
PFPeA*	1.8	4.0	1.2	ng/L	2.02	2706-90-3	J
4:2 FTSA*	Not detected	2.0	0.20	ng/L	2.02	757124-72-4	
PFHxA*	2.7	2.0	1.2	ng/L	2.02	307-24-4	
PFBS*	3.1	2.0	0.61	ng/L	2.02	375-73-5	
PFHpA*	0.91	2.0	0.81	ng/L	2.02	375-85-9	J
PFPeS*	Not detected	2.0	1.8	ng/L	2.02	2706-91-4	
6:2 FTSA*	Not detected	2.0	1.0	ng/L	2.02	27619-97-2	
PFOA*	3.4	2.0	0.81	ng/L	2.02	335-67-1	
PFHxS*	1.7	2.0	1.0	ng/L	2.02	355-46-4	J
PFHxS-LN*	1.1	2.0	1.0	ng/L	2.02	355-46-4-LN	J
PFHxS-BR*	Not detected	2.0	1.0	ng/L	2.02	355-46-4-BR	
PFNA*	1.2	2.0	1.0	ng/L	2.02	375-95-1	J
8:2 FTSA*	Not detected	2.0	1.2	ng/L	2.02	39108-34-4	
PFHpS*	Not detected	2.0	0.81	ng/L	2.02	375-92-8	
PFDA*	Not detected	2.0	1.2	ng/L	2.02	335-76-2	
N-MeFOSAA*	Not detected	2.0	1.0	ng/L	2.02	2355-31-9	
EtFOSAA*	Not detected	4.0	1.0	ng/L	2.02	2991-50-6	
PFOS*	52	2.0	0.81	ng/L	2.02	1763-23-1	
PFOS-LN*	38	2.0	0.81	ng/L	2.02	1763-23-1-LN	
PFOS-BR*	13	2.0	0.81	ng/L	2.02	1763-23-1-BR	
PFUnDA*	Not detected	2.0	0.81	ng/L	2.02	2058-94-8	
PFNS*	Not detected	2.0	1.0	ng/L	2.02	68259-12-1	
PFDoDA*	Not detected	2.0	0.61	ng/L	2.02	307-55-1	
PFDS*	Not detected	2.0	1.0	ng/L	2.02	335-77-3	
PFTTrDA*	Not detected	2.0	0.81	ng/L	2.02	72629-94-8	
FOSA*	Not detected	2.0	0.81	ng/L	2.02	754-91-6	
PFTeDA*	Not detected	4.0	0.61	ng/L	2.02	376-06-7	
11Cl-PF3OUdS*	Not detected	2.0	1.0	ng/L	2.02	763051-92-9	
9Cl-PF3ONS*	Not detected	2.0	1.0	ng/L	2.02	756426-58-1	
ADONA*	Not detected	2.0	0.61	ng/L	2.02	919005-14-4	
HFPO-DA*	Not detected	10	2.0	ng/L	2.02	13252-13-6	
FHpPA (7:3 FTCA)*	Not detected	10	8.1	ng/L	2.02	812-70-4	
FPePA (5:3 FTCA)*	Not detected	10	4.0	ng/L	2.02	914637-49-3	
FPrPA (3:3 FTCA)*	Not detected	10	4.0	ng/L	2.02	356-02-5	
PFBSA*	Not detected	2.0	0.61	ng/L	2.02	30334-69-1	

J-Estimated value less than reporting limit, but greater than MDL



Analytical Laboratory Report

Lab Sample ID: S63238.03 (continued)

Sample Tag: SS-14-06172024

34 PFAs, Method: ASTMD7979-19M, Run Date: 06/19/24 23:29, Analyst: KCV (continued)

Parameter	Result	RL	MDL	Units	Dilution	CAS#	Flags
PFECHS*	12	2.0	0.81	ng/L	2.02	67584-42-3	
PFHxSA*	Not detected	2.0	0.61	ng/L	2.02	41997-13-1	



Analytical Laboratory Report

Lab Sample ID: S63238.04

Sample Tag: SS-15-06172024

Collected Date/Time: 06/17/2024 12:58

Matrix: Groundwater

COC Reference: 155561

Sample Containers

#	Type	Preservative(s)	Refrigerated?	Arrival Temp. (C)	Thermometer #
1	15mL Centrifuge Tube	None	Yes	14.2	IR

Extraction / Prep.

Parameter	Result	Method	Run Date	Analyst	Flags
Initial wt. (g) / Final wt. (g) / Volume (ml)*	12.62/6.35/12	ASTMD7979-19M	06/19/24 06:00	SRP	

Organics

34 PFAs, Method: ASTMD7979-19M, Run Date: 06/19/24 23:49, Analyst: KCV

Parameter	Result	RL	MDL	Units	Dilution	CAS#	Flags
PFBA*	Not detected	9.6	1.9	ng/L	1.91	375-22-4	
PFPeA*	Not detected	4.6	1.1	ng/L	1.91	2706-90-3	X
4:2 FTSA*	Not detected	1.9	0.19	ng/L	1.91	757124-72-4	
PFHxA*	3.2	1.9	1.1	ng/L	1.91	307-24-4	
PFBS*	1.9	1.9	0.57	ng/L	1.91	375-73-5	
PFHpA*	1.0	1.9	0.76	ng/L	1.91	375-85-9	J
PFPeS*	Not detected	1.9	1.7	ng/L	1.91	2706-91-4	
6:2 FTSA*	Not detected	1.9	0.96	ng/L	1.91	27619-97-2	
PFOA*	3.6	1.9	0.76	ng/L	1.91	335-67-1	
PFHxS*	0.99	1.9	0.96	ng/L	1.91	355-46-4	J
PFHxS-LN*	0.96	1.9	0.96	ng/L	1.91	355-46-4-LN	J
PFHxS-BR*	Not detected	1.9	0.96	ng/L	1.91	355-46-4-BR	
PFNA*	Not detected	1.9	0.96	ng/L	1.91	375-95-1	
8:2 FTSA*	Not detected	1.9	1.1	ng/L	1.91	39108-34-4	
PFHpS*	Not detected	1.9	0.76	ng/L	1.91	375-92-8	
PFDA*	Not detected	1.9	1.1	ng/L	1.91	335-76-2	
N-MeFOSAA*	Not detected	1.9	0.96	ng/L	1.91	2355-31-9	
EtFOSAA*	Not detected	3.8	0.96	ng/L	1.91	2991-50-6	
PFOS*	100	1.9	0.76	ng/L	1.91	1763-23-1	
PFOS-LN*	79	1.9	0.76	ng/L	1.91	1763-23-1-LN	
PFOS-BR*	21	1.9	0.76	ng/L	1.91	1763-23-1-BR	
PFUnDA*	Not detected	1.9	0.76	ng/L	1.91	2058-94-8	
PFNS*	Not detected	1.9	0.96	ng/L	1.91	68259-12-1	
PFDODA*	Not detected	1.9	0.57	ng/L	1.91	307-55-1	
PFDS*	Not detected	1.9	0.96	ng/L	1.91	335-77-3	
PFTTrDA*	Not detected	1.9	0.76	ng/L	1.91	72629-94-8	
FOSA*	Not detected	1.9	0.76	ng/L	1.91	754-91-6	
PFTeDA*	Not detected	3.8	0.57	ng/L	1.91	376-06-7	
11Cl-PF3OUdS*	Not detected	1.9	0.96	ng/L	1.91	763051-92-9	
9Cl-PF3ONS*	Not detected	1.9	0.96	ng/L	1.91	756426-58-1	
ADONA*	Not detected	1.9	0.57	ng/L	1.91	919005-14-4	
HFPO-DA*	Not detected	9.6	1.9	ng/L	1.91	13252-13-6	
FHpPA (7:3 FTCA)*	Not detected	9.6	7.6	ng/L	1.91	812-70-4	
FPePA (5:3 FTCA)*	Not detected	9.6	3.8	ng/L	1.91	914637-49-3	
FPrPA (3:3 FTCA)*	Not detected	9.6	3.8	ng/L	1.91	356-02-5	

X-Elevated reporting limit due to matrix interference

J-Estimated value less than reporting limit, but greater than MDL



Analytical Laboratory Report

Lab Sample ID: S63238.04 (continued)

Sample Tag: SS-15-06172024

34 PFAs, Method: ASTMD7979-19M, Run Date: 06/19/24 23:49, Analyst: KCV (continued)

Parameter	Result	RL	MDL	Units	Dilution	CAS#	Flags
PFBSA*	Not detected	1.9	0.57	ng/L	1.91	30334-69-1	
PFECHS*	27	1.9	0.76	ng/L	1.91	67584-42-3	
PFHxSA*	Not detected	1.9	0.57	ng/L	1.91	41997-13-1	



Analytical Laboratory Report

Lab Sample ID: S63238.05

Sample Tag: SS-16-06172024

Collected Date/Time: 06/17/2024 12:45

Matrix: Groundwater

COC Reference: 155561

Sample Containers

#	Type	Preservative(s)	Refrigerated?	Arrival Temp. (C)	Thermometer #
1	15mL Centrifuge Tube	None	Yes	14.2	IR

Extraction / Prep.

Parameter	Result	Method	Run Date	Analyst	Flags
Initial wt. (g) / Final wt. (g) / Volume (ml)*	12.44/6.46/12	ASTMD7979-19M	06/19/24 06:00	SRP	

Organics

34 PFAs, Method: ASTMD7979-19M, Run Date: 06/20/24 00:09, Analyst: KCV

Parameter	Result	RL	MDL	Units	Dilution	CAS#	Flags
PFBA*	Not detected	10	2.0	ng/L	2.01	375-22-4	
PFPeA*	2.8	4.0	1.2	ng/L	2.01	2706-90-3	J
4:2 FTSA*	Not detected	2.0	0.20	ng/L	2.01	757124-72-4	
PFHxA*	2.6	2.0	1.2	ng/L	2.01	307-24-4	
PFBS*	1.5	2.0	0.60	ng/L	2.01	375-73-5	J
PFHpA*	0.96	2.0	0.80	ng/L	2.01	375-85-9	J
PFPeS*	Not detected	2.0	1.8	ng/L	2.01	2706-91-4	
6:2 FTSA*	Not detected	2.0	1.0	ng/L	2.01	27619-97-2	
PFOA*	3.4	2.0	0.80	ng/L	2.01	335-67-1	
PFHxS*	1.6	2.0	1.0	ng/L	2.01	355-46-4	J
PFHxS-LN*	Not detected	2.0	1.0	ng/L	2.01	355-46-4-LN	
PFHxS-BR*	Not detected	2.0	1.0	ng/L	2.01	355-46-4-BR	
PFNA*	Not detected	2.0	1.0	ng/L	2.01	375-95-1	
8:2 FTSA*	Not detected	2.0	1.2	ng/L	2.01	39108-34-4	
PFHpS*	Not detected	2.0	0.80	ng/L	2.01	375-92-8	
PFDA*	Not detected	2.0	1.2	ng/L	2.01	335-76-2	
N-MeFOSAA*	Not detected	2.0	1.0	ng/L	2.01	2355-31-9	
EtFOSAA*	Not detected	4.0	1.0	ng/L	2.01	2991-50-6	
PFOS*	82	2.0	0.80	ng/L	2.01	1763-23-1	
PFOS-LN*	66	2.0	0.80	ng/L	2.01	1763-23-1-LN	
PFOS-BR*	13	2.0	0.80	ng/L	2.01	1763-23-1-BR	
PFUnDA*	Not detected	2.0	0.80	ng/L	2.01	2058-94-8	
PFNS*	Not detected	2.0	1.0	ng/L	2.01	68259-12-1	
PFDODA*	Not detected	2.0	0.60	ng/L	2.01	307-55-1	
PFDS*	Not detected	2.0	1.0	ng/L	2.01	335-77-3	
PFTTrDA*	Not detected	2.0	0.80	ng/L	2.01	72629-94-8	
FOSA*	Not detected	2.0	0.80	ng/L	2.01	754-91-6	
PFTeDA*	Not detected	4.0	0.60	ng/L	2.01	376-06-7	
11Cl-PF3OUdS*	Not detected	2.0	1.0	ng/L	2.01	763051-92-9	
9Cl-PF3ONS*	Not detected	2.0	1.0	ng/L	2.01	756426-58-1	
ADONA*	Not detected	2.0	0.60	ng/L	2.01	919005-14-4	
HFPO-DA*	Not detected	10	2.0	ng/L	2.01	13252-13-6	
FHpPA (7:3 FTCA)*	Not detected	10	8.0	ng/L	2.01	812-70-4	
FPePA (5:3 FTCA)*	Not detected	10	4.0	ng/L	2.01	914637-49-3	
FPrPA (3:3 FTCA)*	Not detected	10	4.0	ng/L	2.01	356-02-5	
PFBSA*	Not detected	2.0	0.60	ng/L	2.01	30334-69-1	

J-Estimated value less than reporting limit, but greater than MDL



Analytical Laboratory Report

Lab Sample ID: S63238.05 (continued)

Sample Tag: SS-16-06172024

34 PFAs, Method: ASTMD7979-19M, Run Date: 06/20/24 00:09, Analyst: KCV (continued)

Parameter	Result	RL	MDL	Units	Dilution	CAS#	Flags
PFECHS*	17	2.0	0.80	ng/L	2.01	67584-42-3	
PFHxSA*	Not detected	2.0	0.60	ng/L	2.01	41997-13-1	



Analytical Laboratory Report

Lab Sample ID: S63238.06

Sample Tag: MH-10E-W-06172024

Collected Date/Time: 06/17/2024 13:28

Matrix: Groundwater

COC Reference: 155561

Sample Containers

#	Type	Preservative(s)	Refrigerated?	Arrival Temp. (C)	Thermometer #
1	15mL Centrifuge Tube	None	Yes	14.2	IR

Extraction / Prep.

Parameter	Result	Method	Run Date	Analyst	Flags
Initial wt. (g) / Final wt. (g) / Volume (ml)*	12.13/6.43/11	ASTMD7979-19M	06/19/24 06:00	SRP	

Organics

34 PFAs, Method: ASTMD7979-19M, Run Date: 06/20/24 00:29, Analyst: KCV

Parameter	Result	RL	MDL	Units	Dilution	CAS#	Flags
PFBA*	8.0	9.7	1.9	ng/L	1.93	375-22-4	J
PFPeA*	1.9	3.9	1.2	ng/L	1.93	2706-90-3	J
4:2 FTSA*	Not detected	1.9	0.19	ng/L	1.93	757124-72-4	
PFHxA*	2.6	1.9	1.2	ng/L	1.93	307-24-4	
PFBS*	3.5	1.9	0.58	ng/L	1.93	375-73-5	
PFHpA*	1.5	1.9	0.77	ng/L	1.93	375-85-9	J
PFPeS*	Not detected	1.9	1.7	ng/L	1.93	2706-91-4	
6:2 FTSA*	Not detected	1.9	0.97	ng/L	1.93	27619-97-2	
PFOA*	5.5	1.9	0.77	ng/L	1.93	335-67-1	
PFHxS*	1.1	1.9	0.97	ng/L	1.93	355-46-4	J
PFHxS-LN*	Not detected	1.9	0.97	ng/L	1.93	355-46-4-LN	
PFHxS-BR*	Not detected	1.9	0.97	ng/L	1.93	355-46-4-BR	
PFNA*	1.0	1.9	0.97	ng/L	1.93	375-95-1	J
8:2 FTSA*	Not detected	1.9	1.2	ng/L	1.93	39108-34-4	
PFHpS*	Not detected	1.9	0.77	ng/L	1.93	375-92-8	
PFDA*	Not detected	1.9	1.2	ng/L	1.93	335-76-2	
N-MeFOSAA*	Not detected	1.9	0.97	ng/L	1.93	2355-31-9	
EtFOSAA*	Not detected	3.9	0.97	ng/L	1.93	2991-50-6	
PFOS*	27	1.9	0.77	ng/L	1.93	1763-23-1	
PFOS-LN*	17	1.9	0.77	ng/L	1.93	1763-23-1-LN	
PFOS-BR*	8.4	1.9	0.77	ng/L	1.93	1763-23-1-BR	
PFUnDA*	Not detected	1.9	0.77	ng/L	1.93	2058-94-8	
PFNS*	Not detected	1.9	0.97	ng/L	1.93	68259-12-1	
PFDODA*	Not detected	1.9	0.58	ng/L	1.93	307-55-1	
PFDS*	Not detected	1.9	0.97	ng/L	1.93	335-77-3	
PFTTrDA*	Not detected	1.9	0.77	ng/L	1.93	72629-94-8	
FOSA*	Not detected	1.9	0.77	ng/L	1.93	754-91-6	
PFTeDA*	Not detected	3.9	0.58	ng/L	1.93	376-06-7	
11Cl-PF3OUdS*	Not detected	1.9	0.97	ng/L	1.93	763051-92-9	
9Cl-PF3ONS*	Not detected	1.9	0.97	ng/L	1.93	756426-58-1	
ADONA*	Not detected	1.9	0.58	ng/L	1.93	919005-14-4	
HFPO-DA*	Not detected	9.7	1.9	ng/L	1.93	13252-13-6	
FHpPA (7:3 FTCA)*	Not detected	9.7	7.7	ng/L	1.93	812-70-4	
FPePA (5:3 FTCA)*	Not detected	9.7	3.9	ng/L	1.93	914637-49-3	
FPrPA (3:3 FTCA)*	Not detected	9.7	3.9	ng/L	1.93	356-02-5	
PFBSA*	Not detected	1.9	0.58	ng/L	1.93	30334-69-1	

J-Estimated value less than reporting limit, but greater than MDL



Analytical Laboratory Report

Lab Sample ID: S63238.06 (continued)

Sample Tag: MH-10E-W-06172024

34 PFAs, Method: ASTMD7979-19M, Run Date: 06/20/24 00:29, Analyst: KCV (continued)

Parameter	Result	RL	MDL	Units	Dilution	CAS#	Flags
PFECHS*	2.9	1.9	0.77	ng/L	1.93	67584-42-3	
PFHxSA*	Not detected	1.9	0.58	ng/L	1.93	41997-13-1	



Analytical Laboratory Report

Lab Sample ID: S63238.07

Sample Tag: SS-23-06172024

Collected Date/Time: 06/17/2024 13:16

Matrix: Groundwater

COC Reference: 155561

Sample Containers

#	Type	Preservative(s)	Refrigerated?	Arrival Temp. (C)	Thermometer #
1	15mL Centrifuge Tube	None	Yes	14.2	IR

Extraction / Prep.

Parameter	Result	Method	Run Date	Analyst	Flags
Initial wt. (g) / Final wt. (g) / Volume (ml)*	12.09/6.46/11	ASTMD7979-19M	06/19/24 06:00	SRP	

Organics

34 PFAs, Method: ASTMD7979-19M, Run Date: 06/20/24 00:49, Analyst: KCV

Parameter	Result	RL	MDL	Units	Dilution	CAS#	Flags
PFBA*	6.8	9.8	2.0	ng/L	1.95	375-22-4	J
PFPeA*	2.0	3.9	1.2	ng/L	1.95	2706-90-3	J
4:2 FTSA*	Not detected	2.0	0.20	ng/L	1.95	757124-72-4	
PFHxA*	3.9	2.0	1.2	ng/L	1.95	307-24-4	
PFBS*	2.6	2.0	0.59	ng/L	1.95	375-73-5	
PFHpA*	0.82	2.0	0.78	ng/L	1.95	375-85-9	J
PFPeS*	Not detected	2.0	1.8	ng/L	1.95	2706-91-4	
6:2 FTSA*	Not detected	2.0	0.98	ng/L	1.95	27619-97-2	
PFOA*	4.1	2.0	0.78	ng/L	1.95	335-67-1	
PFHxS*	3.1	2.0	0.98	ng/L	1.95	355-46-4	
PFHxS-LN*	2.0	2.0	0.98	ng/L	1.95	355-46-4-LN	
PFHxS-BR*	Not detected	2.0	0.98	ng/L	1.95	355-46-4-BR	
PFNA*	0.98	2.0	0.98	ng/L	1.95	375-95-1	J
8:2 FTSA*	Not detected	2.0	1.2	ng/L	1.95	39108-34-4	
PFHpS*	1.0	2.0	0.78	ng/L	1.95	375-92-8	J
PFDA*	Not detected	2.0	1.2	ng/L	1.95	335-76-2	
N-MeFOSAA*	Not detected	2.0	0.98	ng/L	1.95	2355-31-9	
EtFOSAA*	Not detected	3.9	0.98	ng/L	1.95	2991-50-6	
PFOS*	92	2.0	0.78	ng/L	1.95	1763-23-1	
PFOS-LN*	66	2.0	0.78	ng/L	1.95	1763-23-1-LN	
PFOS-BR*	23	2.0	0.78	ng/L	1.95	1763-23-1-BR	
PFUnDA*	Not detected	2.0	0.78	ng/L	1.95	2058-94-8	
PFNS*	Not detected	2.0	0.98	ng/L	1.95	68259-12-1	
PFDODA*	Not detected	2.0	0.59	ng/L	1.95	307-55-1	
PFDS*	Not detected	2.0	0.98	ng/L	1.95	335-77-3	
PFTTrDA*	Not detected	2.0	0.78	ng/L	1.95	72629-94-8	
FOSA*	Not detected	2.0	0.78	ng/L	1.95	754-91-6	
PFTeDA*	Not detected	3.9	0.59	ng/L	1.95	376-06-7	
11Cl-PF3OUdS*	Not detected	2.0	0.98	ng/L	1.95	763051-92-9	
9Cl-PF3ONS*	Not detected	2.0	0.98	ng/L	1.95	756426-58-1	
ADONA*	Not detected	2.0	0.59	ng/L	1.95	919005-14-4	
HFPO-DA*	Not detected	9.8	2.0	ng/L	1.95	13252-13-6	
FHpPA (7:3 FTCA)*	Not detected	9.8	7.8	ng/L	1.95	812-70-4	
FPePA (5:3 FTCA)*	Not detected	9.8	3.9	ng/L	1.95	914637-49-3	
FPrPA (3:3 FTCA)*	Not detected	9.8	3.9	ng/L	1.95	356-02-5	
PFBSA*	Not detected	2.0	0.59	ng/L	1.95	30334-69-1	

J-Estimated value less than reporting limit, but greater than MDL



Analytical Laboratory Report

Lab Sample ID: S63238.07 (continued)

Sample Tag: SS-23-06172024

34 PFAs, Method: ASTMD7979-19M, Run Date: 06/20/24 00:49, Analyst: KCV (continued)

Parameter	Result	RL	MDL	Units	Dilution	CAS#	Flags
PFECHS*	51	2.0	0.78	ng/L	1.95	67584-42-3	
PFHxSA*	Not detected	2.0	0.59	ng/L	1.95	41997-13-1	



Analytical Laboratory Report

Lab Sample ID: S63238.08

Sample Tag: Field Blank-06172024

Collected Date/Time: 06/17/2024 14:15

Matrix: Groundwater

COC Reference: 155561

Sample Containers

#	Type	Preservative(s)	Refrigerated?	Arrival Temp. (C)	Thermometer #
1	15mL Centrifuge Tube	None	Yes	14.2	IR

Extraction / Prep.

Parameter	Result	Method	Run Date	Analyst	Flags
Initial wt. (g) / Final wt. (g) / Volume (ml)*	11.40/6.43/10	ASTMD7979-19M	06/19/24 06:00	SRP	

Organics

34 PFAs, Method: ASTMD7979-19M, Run Date: 06/20/24 01:09, Analyst: KCV

Parameter	Result	RL	MDL	Units	Dilution	CAS#	Flags
PFBA*	Not detected	10	2.0	ng/L	2.01	375-22-4	
PFPeA*	Not detected	4.0	1.2	ng/L	2.01	2706-90-3	
4:2 FTSA*	Not detected	2.0	0.20	ng/L	2.01	757124-72-4	
PFHxA*	Not detected	2.0	1.2	ng/L	2.01	307-24-4	
PFBS*	Not detected	2.0	0.60	ng/L	2.01	375-73-5	
PFHpA*	Not detected	2.0	0.80	ng/L	2.01	375-85-9	
PFPeS*	Not detected	2.0	1.8	ng/L	2.01	2706-91-4	
6:2 FTSA*	Not detected	2.0	1.0	ng/L	2.01	27619-97-2	
PFOA*	Not detected	2.0	0.80	ng/L	2.01	335-67-1	
PFHxS*	Not detected	2.0	1.0	ng/L	2.01	355-46-4	
PFHxS-LN*	Not detected	2.0	1.0	ng/L	2.01	355-46-4-LN	
PFHxS-BR*	Not detected	2.0	1.0	ng/L	2.01	355-46-4-BR	
PFNA*	Not detected	2.0	1.0	ng/L	2.01	375-95-1	
8:2 FTSA*	Not detected	2.0	1.2	ng/L	2.01	39108-34-4	
PFHpS*	Not detected	2.0	0.80	ng/L	2.01	375-92-8	
PFDA*	Not detected	2.0	1.2	ng/L	2.01	335-76-2	
N-MeFOSAA*	Not detected	2.0	1.0	ng/L	2.01	2355-31-9	
EtFOSAA*	Not detected	4.0	1.0	ng/L	2.01	2991-50-6	
PFOS*	Not detected	2.0	0.80	ng/L	2.01	1763-23-1	
PFOS-LN*	Not detected	2.0	0.80	ng/L	2.01	1763-23-1-LN	
PFOS-BR*	Not detected	2.0	0.80	ng/L	2.01	1763-23-1-BR	
PFUnDA*	Not detected	2.0	0.80	ng/L	2.01	2058-94-8	
PFNS*	Not detected	2.0	1.0	ng/L	2.01	68259-12-1	
PFDODA*	Not detected	2.0	0.60	ng/L	2.01	307-55-1	
PFDS*	Not detected	2.0	1.0	ng/L	2.01	335-77-3	
PFTTrDA*	Not detected	2.0	0.80	ng/L	2.01	72629-94-8	
FOSA*	Not detected	2.0	0.80	ng/L	2.01	754-91-6	
PFTeDA*	Not detected	4.0	0.60	ng/L	2.01	376-06-7	
11Cl-PF3OUdS*	Not detected	2.0	1.0	ng/L	2.01	763051-92-9	
9Cl-PF3ONS*	Not detected	2.0	1.0	ng/L	2.01	756426-58-1	
ADONA*	Not detected	2.0	0.60	ng/L	2.01	919005-14-4	
HFPO-DA*	Not detected	10	2.0	ng/L	2.01	13252-13-6	
FHpPA (7:3 FTCA)*	Not detected	10	8.0	ng/L	2.01	812-70-4	
FPePA (5:3 FTCA)*	Not detected	10	4.0	ng/L	2.01	914637-49-3	
FPrPA (3:3 FTCA)*	Not detected	10	4.0	ng/L	2.01	356-02-5	
PFBSA*	Not detected	2.0	0.60	ng/L	2.01	30334-69-1	
PFECHS*	Not detected	2.0	0.80	ng/L	2.01	67584-42-3	



Analytical Laboratory Report

Lab Sample ID: S63238.08 (continued)

Sample Tag: Field Blank-06172024

34 PFAs, Method: ASTMD7979-19M, Run Date: 06/20/24 01:09, Analyst: KCV (continued)

Parameter	Result	RL	MDL	Units	Dilution	CAS#	Flags
PFHxSA*	Not detected	2.0	0.60	ng/L	2.01	41997-13-1	

Merit Laboratories Login Checklist

Lab Set ID:S63238

Client:RAMBOLL (Ramboll Americas)

Project: RACER Coldwater Road

Submitted:06/17/2024 16:35 Login User: MMC

Attention: Clifford Yantz

Address: Ramboll Americas
2090 Commonwealth Blvd
Ann Arbor, MI 48105

Phone: 313-333-0211 FAX:
Email: Clifford.Yantz@ramboll.com

Selection	Description	Note
-----------	-------------	------

Sample Receiving

- | | | |
|-----|--|---|
| 01. | <input type="checkbox"/> Yes <input checked="" type="checkbox"/> No <input type="checkbox"/> N/A | Samples are received at 4C +/- 2C Thermometer # IR 14.2 |
| 02. | <input checked="" type="checkbox"/> Yes <input type="checkbox"/> No <input type="checkbox"/> N/A | Received on ice/ cooling process begun |
| 03. | <input type="checkbox"/> Yes <input checked="" type="checkbox"/> No <input type="checkbox"/> N/A | Samples shipped |
| 04. | <input type="checkbox"/> Yes <input checked="" type="checkbox"/> No <input type="checkbox"/> N/A | Samples left in 24 hr. drop box |
| 05. | <input type="checkbox"/> Yes <input type="checkbox"/> No <input checked="" type="checkbox"/> N/A | Are there custody seals/tape or is the drop box locked |

Chain of Custody

- | | | |
|-----|--|--|
| 06. | <input checked="" type="checkbox"/> Yes <input type="checkbox"/> No <input type="checkbox"/> N/A | COC adequately filled out |
| 07. | <input checked="" type="checkbox"/> Yes <input type="checkbox"/> No <input type="checkbox"/> N/A | COC signed and relinquished to the lab |
| 08. | <input checked="" type="checkbox"/> Yes <input type="checkbox"/> No <input type="checkbox"/> N/A | Sample tag on bottles match COC |
| 09. | <input type="checkbox"/> Yes <input checked="" type="checkbox"/> No <input type="checkbox"/> N/A | Subcontracting needed? Subcontracted to: |

Preservation

- | | | |
|-----|--|---|
| 10. | <input checked="" type="checkbox"/> Yes <input type="checkbox"/> No <input type="checkbox"/> N/A | Do sample have correct chemical preservation |
| 11. | <input type="checkbox"/> Yes <input type="checkbox"/> No <input checked="" type="checkbox"/> N/A | Completed pH checks on preserved samples? (no VOAs) |
| 12. | <input type="checkbox"/> Yes <input checked="" type="checkbox"/> No <input type="checkbox"/> N/A | Did any samples need to be preserved in the lab? |

Bottle Conditions

- | | | |
|-----|--|---|
| 13. | <input checked="" type="checkbox"/> Yes <input type="checkbox"/> No <input type="checkbox"/> N/A | All bottles intact |
| 14. | <input checked="" type="checkbox"/> Yes <input type="checkbox"/> No <input type="checkbox"/> N/A | Appropriate analytical bottles are used |
| 15. | <input checked="" type="checkbox"/> Yes <input type="checkbox"/> No <input type="checkbox"/> N/A | Merit bottles used |
| 16. | <input checked="" type="checkbox"/> Yes <input type="checkbox"/> No <input type="checkbox"/> N/A | Sufficient sample volume received |
| 17. | <input type="checkbox"/> Yes <input checked="" type="checkbox"/> No <input type="checkbox"/> N/A | Samples require laboratory filtration |
| 18. | <input checked="" type="checkbox"/> Yes <input type="checkbox"/> No <input type="checkbox"/> N/A | Samples submitted within holding time |
| 19. | <input type="checkbox"/> Yes <input type="checkbox"/> No <input checked="" type="checkbox"/> N/A | Do water VOC or TOX bottles contain headspace |

Corrective action for all exceptions is to call the client and to notify the project manager.

Client Review By: _____ Date: _____



2680 East Lansing Dr., East Lansing, MI 48823
 Phone (517) 332-0167 Fax (517) 332-4034
 www.meritlabs.com

C.O.C. PAGE # 1 OF 1 155561

REPORT TO

CHAIN OF CUSTODY RECORD

INVOICE TO

CONTACT NAME Clifford Yantz / Kevin Schneider
 COMPANY Ramboll
 ADDRESS 2090 Commonwealth Blvd
 CITY Ann Arbor STATE MI ZIP CODE 48105
 PHONE NO. CELL NO. 313-333-0211 P.O. NO. 1940008845 Insk 37
 E-MAIL ADDRESS Kevin.Schneider@Ramboll.com Clifford.Yantz@Ramboll.com QUOTE NO.

CONTACT NAME SAME
 COMPANY
 ADDRESS
 CITY STATE ZIP CODE
 PHONE NO. E-MAIL ADDRESS

PROJECT NO./NAME RACER Coldwater Road SAMPLER(S) - PLEASE PRINT/SIGN NAME Kevin Schneider K SCL
 TURNAROUND TIME REQUIRED 1 DAY 2 DAYS 3 DAYS STANDARD OTHER
 DELIVERABLES REQUIRED STD LEVEL II LEVEL III LEVEL IV EDD OTHER

MATRIX W=WATER GW=GROUNDWATER WW=WASTEWATER S=SOIL L=LIQUID SD=SOLID
 CODE: SL=SLUDGE DW=DRINKING WATER O=OIL WP=WIFE A=AIR WS=WASTE

ANALYSIS (ATTACH LIST IF MORE SPACE IS REQUIRED)

Certifications	<input type="checkbox"/> OHIO VAP	<input type="checkbox"/> Drinking Water
	<input type="checkbox"/> DoD	<input type="checkbox"/> NPDES
Project Locations	<input type="checkbox"/> Detroit	<input type="checkbox"/> New York
	<input type="checkbox"/> Other	
Special Instructions		

MERIT LAB NO. <small>FOR LAB USE ONLY</small>	COLLECTION		SAMPLE TAG IDENTIFICATION-DESCRIPTION	MATRIX	# OF BOTTLES	NONE	HCl	HNO ₃	H ₂ SO ₄	NaOH	MeOH	OTHER	PFAS (7979)							
	DATE	TIME																		
63238.01	6/17/24	1410	SS-10-06172024	L	3	X							X							
.02	6/17/24	1340	SS-12-06172024	L	3	X							X							
.03	6/17/24	1308	SS-14-06172024	L	3	X							X							
.04	6/17/24	1258	SS-15-06172024	L	3	X							X							
.05	6/17/24	1245	SS-16-06172024	L	3	X							X							
.06	6/17/24	1328	MH-10E-W-06172024	L	3	X							X							
.07	6/17/24	1316	SS-23-06172024	L	3	X							X							
.08	6/17/24	1415	Field Blank-06172024	L	1	X							X							

RELINQUISHED BY: [Signature] Sampler DATE 6/17/24 TIME 1635
 RECEIVED BY: Johanna Murray DATE 6/17/24 TIME 1635
 RELINQUISHED BY: DATE TIME
 RECEIVED BY: DATE TIME

RELINQUISHED BY: DATE TIME
 RECEIVED BY: DATE TIME
 SEAL NO. SEAL INTACT YES NO INITIALS
 SEAL NO. SEAL INTACT YES NO INITIALS
 NOTES: 10E TEMP. ON ARRIVAL 14.2



Quality Control Report

Report ID: QC-S63238-01
Generated on 06/28/2024

Report to

Attention: Clifford Yantz
Ramboll Americas
2090 Commonwealth Blvd
Ann Arbor, MI 48105

Phone: 313-333-0211 FAX:

Report Produced by

Merit Laboratories
2680 East Lansing Drive
East Lansing, MI 48823

Phone: (517) 332-0167 FAX: (517) 332-6333

Report Summary

Lab Sample ID(s): S63238.01-S63238.08
Project: RACER Coldwater Road
Submitted Date/Time: 06/17/2024 16:35
Sampled by: Kevin Schneider
P.O. #: 1940008845 TASK 37

QC Report Sections

Cover Page (Page 1)
Analysis Summary (Pages 2-9)
Prep Batch Summary (Page 10)
Internal Standards per Lab Sample (Pages 11-18)
Internal Standards per QC Sample (Pages 19-23)
Batch QC Results (Pages 24-28)

Report Flag Descriptions

*: QC result is outside of indicated control limits
W: Surrogate result not applicable due to sample dilution

I certify that this data package is in compliance with the terms and conditions of the program, and project, and contractual requirements both technically and for completeness. Release of the data contained in this hardcopy data package and its computer-readable data submitted has been authorized by the Quality Assurance Manager and his/her designee, as verified by the following signature.

Barbara Ball
Quality Assurance Manager

QC Report - Analysis Summary

Lab Sample ID: S63238.01

Sample Tag: SS-10-06172024

Collected Date/Time: 06/17/2024 14:10

Matrix: Groundwater

COC Reference: 155561

Analysis	Method	Run Date/Time	Batch ID	Prep ID	Surr	QC Types
Organics - Volatiles						
34 PFAs	ASTMD7979-19M	06/19/24 22:09	AK240619	PF240619W1	Yes	BLK/LCS/LCSD/MS/DU

QC Report - Analysis Summary

Lab Sample ID: S63238.02

Sample Tag: SS-12-06172024

Collected Date/Time: 06/17/2024 13:40

Matrix: Groundwater

COC Reference: 155561

Analysis	Method	Run Date/Time	Batch ID	Prep ID	Surr	QC Types
Organics - Volatiles						
34 PFAs	ASTMD7979-19M	06/19/24 22:49	AK240619	PF240619W1	Yes	BLK/LCS/LCSD/MS/DU

QC Report - Analysis Summary

Lab Sample ID: S63238.03

Sample Tag: SS-14-06172024

Collected Date/Time: 06/17/2024 13:08

Matrix: Groundwater

COC Reference: 155561

Analysis	Method	Run Date/Time	Batch ID	Prep ID	Surr	QC Types
Organics - Volatiles						
34 PFAs	ASTMD7979-19M	06/19/24 23:29	AK240619	PF240619W1	Yes	BLK/LCS/LCSD/MS/DU

QC Report - Analysis Summary

Lab Sample ID: S63238.04

Sample Tag: SS-15-06172024

Collected Date/Time: 06/17/2024 12:58

Matrix: Groundwater

COC Reference: 155561

Analysis	Method	Run Date/Time	Batch ID	Prep ID	Surr	QC Types
Organics - Volatiles						
34 PFAs	ASTMD7979-19M	06/19/24 23:49	AK240619	PF240619W1	Yes	BLK/LCS/LCSD/MS/DU

QC Report - Analysis Summary

Lab Sample ID: S63238.05

Sample Tag: SS-16-06172024

Collected Date/Time: 06/17/2024 12:45

Matrix: Groundwater

COC Reference: 155561

Analysis	Method	Run Date/Time	Batch ID	Prep ID	Surr	QC Types
Organics - Volatiles						
34 PFAs	ASTMD7979-19M	06/20/24 00:09	AK240619	PF240619W1	Yes	BLK/LCS/LCSD/MS/DU

QC Report - Analysis Summary

Lab Sample ID: S63238.06

Sample Tag: MH-10E-W-06172024

Collected Date/Time: 06/17/2024 13:28

Matrix: Groundwater

COC Reference: 155561

Analysis	Method	Run Date/Time	Batch ID	Prep ID	Surr	QC Types
Organics - Volatiles						
34 PFAs	ASTMD7979-19M	06/20/24 00:29	AK240619	PF240619W1	Yes	BLK/LCS/LCSD/MS/DU

QC Report - Analysis Summary

Lab Sample ID: S63238.07

Sample Tag: SS-23-06172024

Collected Date/Time: 06/17/2024 13:16

Matrix: Groundwater

COC Reference: 155561

Analysis	Method	Run Date/Time	Batch ID	Prep ID	Surr	QC Types
Organics - Volatiles						
34 PFAs	ASTMD7979-19M	06/20/24 00:49	AK240619	PF240619W1	Yes	BLK/LCS/LCSD/MS/DU

QC Report - Analysis Summary

Lab Sample ID: S63238.08

Sample Tag: Field Blank-06172024

Collected Date/Time: 06/17/2024 14:15

Matrix: Groundwater

COC Reference: 155561

Analysis	Method	Run Date/Time	Batch ID	Prep ID	Surr	QC Types
Organics - Volatiles						
34 PFAs	ASTMD7979-19M	06/20/24 01:09	AK240619	PF240619W1	Yes	BLK/LCS/LCSD/MS/DU

QC Report - Prep Batch Summary

Organics - Volatiles, Prep Batch ID: PF240619W1

Surrogates: Yes, QC Types: BLK/LCS/LCSD/MS/DUP

Sample ID	Analysis	Method	Run Date/Time	Batch ID
S63238.01	34 PFAs	ASTMD7979-19M	06/19/24 22:09	AK240619
S63238.02	34 PFAs	ASTMD7979-19M	06/19/24 22:49	AK240619
S63238.03	34 PFAs	ASTMD7979-19M	06/19/24 23:29	AK240619
S63238.04	34 PFAs	ASTMD7979-19M	06/19/24 23:49	AK240619
S63238.05	34 PFAs	ASTMD7979-19M	06/20/24 00:09	AK240619
S63238.06	34 PFAs	ASTMD7979-19M	06/20/24 00:29	AK240619
S63238.07	34 PFAs	ASTMD7979-19M	06/20/24 00:49	AK240619
S63238.08	34 PFAs	ASTMD7979-19M	06/20/24 01:09	AK240619

QC Report - Internal Standards per Lab Sample

Lab Sample ID: S63238.01

Sample Tag: SS-10-06172024

Collected Date/Time: 06/17/2024 14:10

Matrix: Groundwater

COC Reference: 155561

Organics - Volatiles, Analysis: 34 PFAs

Run in Batch: AK240619, Run Date: 06/19/2024 22:09, Matrix: WW, Dilution: 2.04

Internal Standard	Flags	%Rec	LCL	UCL
M2-4:2FTSA		114.2	50.0	150.0
M2-6:2FTSA		88.0	50.0	150.0
M2-8:2FTSA		92.9	50.0	150.0
M2PFTeDA		109.0	12.0	218.0
M3PFBS		108.3	50.0	150.0
M3PFHxS		112.9	50.0	150.0
M4PFHpA		106.5	50.0	150.0
M5PFHxA		114.2	50.0	150.0
M5PFPeA		108.3	50.0	150.0
M6PFDA		110.4	50.0	150.0
M7PFUnDA		108.3	50.0	150.0
M8FOSA		103.7	50.0	150.0
M8PFOA		111.4	50.0	150.0
M8PFOS		117.6	50.0	150.0
M9-PFNA		111.0	50.0	150.0
MPFBA		106.9	50.0	150.0
MPFDoDA		97.8	50.0	150.0
d3N-MeFOSAA		112.1	50.0	150.0
d5EtFOSAA		110.4	50.0	150.0
MHFPO-DA		102.7	50.0	150.0
d-N-EtFOSA-M		103.7	50.0	150.0
d-N-MeFOSA-M		103.5	50.0	150.0
d7-N-MeFOSE-M		103.0	50.0	150.0
d9-N-EtFOSE-M		110.2	50.0	150.0

QC Report - Internal Standards per Lab Sample

Lab Sample ID: **S63238.02**

Sample Tag: SS-12-06172024

Collected Date/Time: 06/17/2024 13:40

Matrix: Groundwater

COC Reference: 155561

Organics - Volatiles, Analysis: 34 PFAs

Run in Batch: AK240619, Run Date: 06/19/2024 22:49, Matrix: WW, Dilution: 2.07

Internal Standard	Flags	%Rec	LCL	UCL
M2-4:2FTSA		121.6	50.0	150.0
M2-6:2FTSA		114.9	50.0	150.0
M2-8:2FTSA		100.4	50.0	150.0
M2PFTeDA		128.5	12.0	218.0
M3PFBS		119.3	50.0	150.0
M3PFHxS		111.0	50.0	150.0
M4PFHpA		110.6	50.0	150.0
M5PFHxA		115.7	50.0	150.0
M5PFPeA		112.7	50.0	150.0
M6PFDA		124.9	50.0	150.0
M7PFUnDA		109.0	50.0	150.0
M8FOSA		113.9	50.0	150.0
M8PFOA		113.5	50.0	150.0
M8PFOS		125.6	50.0	150.0
M9-PFNA		105.5	50.0	150.0
MPFBA		112.9	50.0	150.0
MPFDoDA		116.5	50.0	150.0
d3N-MeFOSAA		111.7	50.0	150.0
d5EtFOSAA		112.1	50.0	150.0
MHFPO-DA		109.6	50.0	150.0
d-N-EtFOSA-M		110.0	50.0	150.0
d-N-MeFOSA-M		105.1	50.0	150.0
d7-N-MeFOSE-M		108.6	50.0	150.0
d9-N-EtFOSE-M		124.7	50.0	150.0

QC Report - Internal Standards per Lab Sample

Lab Sample ID: S63238.03

Sample Tag: SS-14-06172024

Collected Date/Time: 06/17/2024 13:08

Matrix: Groundwater

COC Reference: 155561

Organics - Volatiles, Analysis: 34 PFAs

Run in Batch: AK240619, Run Date: 06/19/2024 23:29, Matrix: WW, Dilution: 2.02

Internal Standard	Flags	%Rec	LCL	UCL
M2-4:2FTSA		119.1	50.0	150.0
M2-6:2FTSA		86.5	50.0	150.0
M2-8:2FTSA		106.9	50.0	150.0
M2PFTeDA		113.2	12.0	218.0
M3PFBS		102.3	50.0	150.0
M3PFHxS		103.3	50.0	150.0
M4PFHpA		101.6	50.0	150.0
M5PFHxA		107.0	50.0	150.0
M5PFPeA		110.1	50.0	150.0
M6PFDA		108.2	50.0	150.0
M7PFUnDA		109.5	50.0	150.0
M8FOSA		111.4	50.0	150.0
M8PFOA		126.4	50.0	150.0
M8PFOS		120.3	50.0	150.0
M9-PFNA		110.2	50.0	150.0
MPFBA		104.9	50.0	150.0
MPFDoDA		109.7	50.0	150.0
d3N-MeFOSAA		111.2	50.0	150.0
d5EtFOSAA		105.9	50.0	150.0
MHFPO-DA		104.3	50.0	150.0
d-N-EtFOSA-M		104.8	50.0	150.0
d-N-MeFOSA-M		106.4	50.0	150.0
d7-N-MeFOSE-M		103.5	50.0	150.0
d9-N-EtFOSE-M		113.3	50.0	150.0

QC Report - Internal Standards per Lab Sample

Lab Sample ID: **S63238.04**

Sample Tag: SS-15-06172024

Collected Date/Time: 06/17/2024 12:58

Matrix: Groundwater

COC Reference: 155561

Organics - Volatiles, Analysis: 34 PFAs

Run in Batch: AK240619, Run Date: 06/19/2024 23:49, Matrix: WW, Dilution: 1.91

Internal Standard	Flags	%Rec	LCL	UCL
M2-4:2FTSA		130.0	50.0	150.0
M2-6:2FTSA		110.8	50.0	150.0
M2-8:2FTSA		105.7	50.0	150.0
M2PFTeDA		101.0	12.0	218.0
M3PFBS		101.8	50.0	150.0
M3PFHxS		107.7	50.0	150.0
M4PFHpA		118.8	50.0	150.0
M5PFHxA		107.8	50.0	150.0
M5PFPeA		103.0	50.0	150.0
M6PFDA		112.3	50.0	150.0
M7PFUnDA		110.8	50.0	150.0
M8FOSA		111.0	50.0	150.0
M8PFOA		109.0	50.0	150.0
M8PFOS		124.2	50.0	150.0
M9-PFNA		113.6	50.0	150.0
MPFBA		107.2	50.0	150.0
MPFDoDA		111.5	50.0	150.0
d3N-MeFOSAA		113.6	50.0	150.0
d5EtFOSAA		115.8	50.0	150.0
MHFPO-DA		101.6	50.0	150.0
d-N-EtFOSA-M		106.4	50.0	150.0
d-N-MeFOSA-M		109.7	50.0	150.0
d7-N-MeFOSE-M		107.7	50.0	150.0
d9-N-EtFOSE-M		117.0	50.0	150.0

QC Report - Internal Standards per Lab Sample

Lab Sample ID: **S63238.05**

Sample Tag: SS-16-06172024

Collected Date/Time: 06/17/2024 12:45

Matrix: Groundwater

COC Reference: 155561

Organics - Volatiles, Analysis: 34 PFAs

Run in Batch: AK240619, Run Date: 06/20/2024 00:09, Matrix: WW, Dilution: 2.01

Internal Standard	Flags	%Rec	LCL	UCL
M2-4:2FTSA		112.6	50.0	150.0
M2-6:2FTSA		110.0	50.0	150.0
M2-8:2FTSA		97.2	50.0	150.0
M2PFTeDA		103.3	12.0	218.0
M3PFBS		100.5	50.0	150.0
M3PFHxS		106.4	50.0	150.0
M4PFHpA		103.8	50.0	150.0
M5PFHxA		110.0	50.0	150.0
M5PFPeA		105.6	50.0	150.0
M6PFDA		117.0	50.0	150.0
M7PFUnDA		105.2	50.0	150.0
M8FOSA		106.8	50.0	150.0
M8PFOA		102.2	50.0	150.0
M8PFOS		118.3	50.0	150.0
M9-PFNA		117.0	50.0	150.0
MPFBA		105.0	50.0	150.0
MPFDoDA		98.1	50.0	150.0
d3N-MeFOSAA		100.8	50.0	150.0
d5EtFOSAA		103.4	50.0	150.0
MHFPO-DA		98.1	50.0	150.0
d-N-EtFOSA-M		105.2	50.0	150.0
d-N-MeFOSA-M		102.5	50.0	150.0
d7-N-MeFOSE-M		101.9	50.0	150.0
d9-N-EtFOSE-M		108.3	50.0	150.0

QC Report - Internal Standards per Lab Sample

Lab Sample ID: S63238.06

Sample Tag: MH-10E-W-06172024

Collected Date/Time: 06/17/2024 13:28

Matrix: Groundwater

COC Reference: 155561

Organics - Volatiles, Analysis: 34 PFAs

Run in Batch: AK240619, Run Date: 06/20/2024 00:29, Matrix: WW, Dilution: 1.93

Internal Standard	Flags	%Rec	LCL	UCL
M2-4:2FTSA		120.7	50.0	150.0
M2-6:2FTSA		101.7	50.0	150.0
M2-8:2FTSA		98.6	50.0	150.0
M2PFTeDA		89.3	12.0	218.0
M3PFBS		113.0	50.0	150.0
M3PFHxS		112.9	50.0	150.0
M4PFHpA		111.9	50.0	150.0
M5PFHxA		110.5	50.0	150.0
M5PFPeA		109.2	50.0	150.0
M6PFDA		120.2	50.0	150.0
M7PFUnDA		100.6	50.0	150.0
M8FOSA		112.8	50.0	150.0
M8PFOA		105.9	50.0	150.0
M8PFOS		125.6	50.0	150.0
M9-PFNA		108.2	50.0	150.0
MPFBA		111.3	50.0	150.0
MPFDoDA		95.9	50.0	150.0
d3N-MeFOSAA		118.1	50.0	150.0
d5EtFOSAA		109.8	50.0	150.0
MHFPO-DA		109.2	50.0	150.0
d-N-EtFOSA-M		85.6	50.0	150.0
d-N-MeFOSA-M		98.2	50.0	150.0
d7-N-MeFOSE-M		107.5	50.0	150.0
d9-N-EtFOSE-M		105.7	50.0	150.0

QC Report - Internal Standards per Lab Sample

Lab Sample ID: **S63238.07**

Sample Tag: SS-23-06172024

Collected Date/Time: 06/17/2024 13:16

Matrix: Groundwater

COC Reference: 155561

Organics - Volatiles, Analysis: 34 PFAs

Run in Batch: AK240619, Run Date: 06/20/2024 00:49, Matrix: WW, Dilution: 1.95

Internal Standard	Flags	%Rec	LCL	UCL
M2-4:2FTSA		121.9	50.0	150.0
M2-6:2FTSA		97.7	50.0	150.0
M2-8:2FTSA		95.3	50.0	150.0
M2PFTeDA		108.1	12.0	218.0
M3PFBS		109.1	50.0	150.0
M3PFHxS		107.5	50.0	150.0
M4PFHpA		109.2	50.0	150.0
M5PFHxA		104.4	50.0	150.0
M5PFPeA		103.8	50.0	150.0
M6PFDA		122.2	50.0	150.0
M7PFUnDA		104.8	50.0	150.0
M8FOSA		102.6	50.0	150.0
M8PFOA		97.7	50.0	150.0
M8PFOS		117.9	50.0	150.0
M9-PFNA		105.2	50.0	150.0
MPFBA		106.8	50.0	150.0
MPFDoDA		110.3	50.0	150.0
d3N-MeFOSAA		109.4	50.0	150.0
d5EtFOSAA		119.2	50.0	150.0
MHFPO-DA		102.0	50.0	150.0
d-N-EtFOSA-M		103.2	50.0	150.0
d-N-MeFOSA-M		102.8	50.0	150.0
d7-N-MeFOSE-M		104.8	50.0	150.0
d9-N-EtFOSE-M		108.3	50.0	150.0

QC Report - Internal Standards per Lab Sample

Lab Sample ID: S63238.08

Sample Tag: Field Blank-06172024

Collected Date/Time: 06/17/2024 14:15

Matrix: Groundwater

COC Reference: 155561

Organics - Volatiles, Analysis: 34 PFAs

Run in Batch: AK240619, Run Date: 06/20/2024 01:09, Matrix: WW, Dilution: 2.01

Internal Standard	Flags	%Rec	LCL	UCL
M2-4:2FTSA		116.8	50.0	150.0
M2-6:2FTSA		111.2	50.0	150.0
M2-8:2FTSA		101.0	50.0	150.0
M2PFTeDA		87.8	12.0	218.0
M3PFBS		121.2	50.0	150.0
M3PFHxS		119.7	50.0	150.0
M4PFHpA		107.4	50.0	150.0
M5PFHxA		110.1	50.0	150.0
M5PFPeA		116.3	50.0	150.0
M6PFDA		112.5	50.0	150.0
M7PFUnDA		116.3	50.0	150.0
M8FOSA		111.2	50.0	150.0
M8PFOA		111.9	50.0	150.0
M8PFOS		133.6	50.0	150.0
M9-PFNA		119.0	50.0	150.0
MPFBA		112.1	50.0	150.0
MPFDoDA		93.6	50.0	150.0
d3N-MeFOSAA		108.4	50.0	150.0
d5EtFOSAA		107.9	50.0	150.0
MHFPO-DA		109.4	50.0	150.0
d-N-EtFOSA-M		98.7	50.0	150.0
d-N-MeFOSA-M		101.0	50.0	150.0
d7-N-MeFOSE-M		107.1	50.0	150.0
d9-N-EtFOSE-M		116.1	50.0	150.0

QC Report - Internal Standards per QC Sample

Organics - Volatiles, Prep Batch ID: PF240619W1

QC Types: BLK/LCS/LCSD/MS/DUP

Blank (BLK)

Lab Sample ID: AK240619.BLK240619

Run in Batch: AK240619, Run Date: 06/19/2024 18:29, Prep Date: 06/19/2024, Matrix: WW, Dilution: 1

Internal Standard	Flags	%Rec	LCL	UCL
M2-4:2FTSA		82.8	50.0	150.0
M2-6:2FTSA		77.8	50.0	150.0
M2-8:2FTSA		77.8	50.0	150.0
M2PFTeDA		83.6	12.0	218.0
M3PFBS		91.5	50.0	150.0
M3PFHxS		89.5	50.0	150.0
M4PFHpA		86.2	50.0	150.0
M5PFHxA		91.3	50.0	150.0
M5PFPeA		83.2	50.0	150.0
M6PFDA		99.4	50.0	150.0
M7PFUnDA		84.0	50.0	150.0
M8FOSA		86.9	50.0	150.0
M8PFOA		86.4	50.0	150.0
M8PFOS		97.4	50.0	150.0
M9-PFNA		88.6	50.0	150.0
MPFBA		87.3	50.0	150.0
MPFDoDA		81.1	50.0	150.0
d3N-MeFOSAA		82.7	50.0	150.0
d5EtFOSAA		86.1	50.0	150.0
MHFPO-DA		85.4	50.0	150.0
d-N-EtFOSA-M		82.9	50.0	150.0
d-N-MeFOSA-M		82.7	50.0	150.0
d7-N-MeFOSE-M		82.0	50.0	150.0
d9-N-EtFOSE-M		91.5	50.0	150.0

QC Report - Internal Standards per QC Sample

Laboratory Control Sample (LCS)

Lab Sample ID: AK240619.LCS240619

Run in Batch: AK240619, Run Date: 06/19/2024 17:49, Prep Date: 06/19/2024, Matrix: WW, Dilution: 1

Internal Standard	Flags	%Rec	LCL	UCL
M2-4:2FTSA		95.1	50.0	150.0
M2-6:2FTSA		84.3	50.0	150.0
M2-8:2FTSA		90.0	50.0	150.0
M2PFTeDA		74.2	12.0	218.0
M3PFBS		92.8	50.0	150.0
M3PFHxS		96.4	50.0	150.0
M4PFHpA		89.2	50.0	150.0
M5PFHxA		93.3	50.0	150.0
M5PFPeA		91.3	50.0	150.0
M6PFDA		99.0	50.0	150.0
M7PFUnDA		88.2	50.0	150.0
M8FOSA		93.2	50.0	150.0
M8PFOA		93.1	50.0	150.0
M8PFOS		110.7	50.0	150.0
M9-PFNA		93.5	50.0	150.0
MPFBA		94.0	50.0	150.0
MPFDoDA		81.3	50.0	150.0
d3N-MeFOSAA		102.6	50.0	150.0
d5EtFOSAA		97.0	50.0	150.0
MHFPO-DA		92.8	50.0	150.0
d-N-EtFOSA-M		89.3	50.0	150.0
d-N-MeFOSA-M		94.3	50.0	150.0
d7-N-MeFOSE-M		92.9	50.0	150.0
d9-N-EtFOSE-M		92.5	50.0	150.0

QC Report - Internal Standards per QC Sample

Laboratory Control Sample Duplicate (LCSD)

Lab Sample ID: AK240619.LCSD240619, Parent Sample ID: AK240619.LCS240619

Run in Batch: AK240619, Run Date: 06/19/2024 18:09, Prep Date: 06/19/2024, Matrix: WW, Dilution: 1

Internal Standard	Flags	%Rec	LCL	UCL
M2-4:2FTSA		90.7	50.0	150.0
M2-6:2FTSA		82.1	50.0	150.0
M2-8:2FTSA		73.6	50.0	150.0
M2PFTeDA		80.9	12.0	218.0
M3PFBS		97.8	50.0	150.0
M3PFHxS		102.2	50.0	150.0
M4PFHpA		96.2	50.0	150.0
M5PFHxA		87.0	50.0	150.0
M5PFPeA		95.9	50.0	150.0
M6PFDA		98.8	50.0	150.0
M7PFUnDA		98.6	50.0	150.0
M8FOSA		99.2	50.0	150.0
M8PFOA		83.7	50.0	150.0
M8PFOS		113.2	50.0	150.0
M9-PFNA		96.0	50.0	150.0
MPFBA		97.2	50.0	150.0
MPFDoDA		85.4	50.0	150.0
d3N-MeFOSAA		98.2	50.0	150.0
d5EtFOSAA		93.4	50.0	150.0
MHFPO-DA		93.1	50.0	150.0
d-N-EtFOSA-M		84.2	50.0	150.0
d-N-MeFOSA-M		96.4	50.0	150.0
d7-N-MeFOSE-M		95.1	50.0	150.0
d9-N-EtFOSE-M		105.1	50.0	150.0

QC Report - Internal Standards per QC Sample

Matrix Spike (MS)

Lab Sample ID: AK240619.6323801M, Parent Sample ID: S63238.01

Run in Batch: AK240619, Run Date: 06/19/2024 22:29, Prep Date: 06/19/2024, Matrix: WW, Dilution: 2.04

Internal Standard	Flags	%Rec	LCL	UCL
M2-4:2FTSA		98.8	50.0	150.0
M2-6:2FTSA		91.9	50.0	150.0
M2-8:2FTSA		97.9	50.0	150.0
M2PFTeDA		94.5	12.0	218.0
M3PFBS		108.8	50.0	150.0
M3PFHxS		103.7	50.0	150.0
M4PFHpA		107.6	50.0	150.0
M5PFHxA		103.2	50.0	150.0
M5PFPeA		106.0	50.0	150.0
M6PFDA		109.9	50.0	150.0
M7PFUnDA		104.2	50.0	150.0
M8FOSA		99.1	50.0	150.0
M8PFOA		100.5	50.0	150.0
M8PFOS		119.9	50.0	150.0
M9-PFNA		109.9	50.0	150.0
MPFBA		103.9	50.0	150.0
MPFDoDA		93.1	50.0	150.0
d3N-MeFOSAA		96.8	50.0	150.0
d5EtFOSAA		99.8	50.0	150.0
MHFPO-DA		103.4	50.0	150.0
d-N-EtFOSA-M		99.1	50.0	150.0
d-N-MeFOSA-M		98.3	50.0	150.0
d7-N-MeFOSE-M		101.0	50.0	150.0
d9-N-EtFOSE-M		109.3	50.0	150.0

QC Report - Internal Standards per QC Sample

Duplicate (DUP)

Lab Sample ID: AK240619.6323802D, Parent Sample ID: S63238.02

Run in Batch: AK240619, Run Date: 06/19/2024 23:09, Prep Date: 06/19/2024, Matrix: WW, Dilution: 2.07

Internal Standard	Flags	%Rec	LCL	UCL
M2-4:2FTSA		124.8	50.0	150.0
M2-6:2FTSA		107.7	50.0	150.0
M2-8:2FTSA		107.2	50.0	150.0
M2PFTeDA		127.8	12.0	218.0
M3PFBS		110.6	50.0	150.0
M3PFHxS		114.3	50.0	150.0
M4PFHpA		106.0	50.0	150.0
M5PFHxA		106.5	50.0	150.0
M5PFPeA		111.6	50.0	150.0
M6PFDA		119.3	50.0	150.0
M7PFUnDA		106.6	50.0	150.0
M8FOSA		115.8	50.0	150.0
M8PFOA		103.6	50.0	150.0
M8PFOS		119.4	50.0	150.0
M9-PFNA		114.6	50.0	150.0
MPFBA		109.9	50.0	150.0
MPFDoDA		113.6	50.0	150.0
d3N-MeFOSAA		104.2	50.0	150.0
d5EtFOSAA		111.8	50.0	150.0
MHFPO-DA		100.1	50.0	150.0
d-N-EtFOSA-M		96.9	50.0	150.0
d-N-MeFOSA-M		102.6	50.0	150.0
d7-N-MeFOSE-M		107.3	50.0	150.0
d9-N-EtFOSE-M		119.8	50.0	150.0

QC Report - Batch QC Results

Organics - Volatiles, Prep Batch ID: PF240619W1

Surrogates: Yes, QC Types: BLK/LCS/LCSD/MS/DUP

Blank (BLK)

Lab Sample ID: AK240619.BLK240619

Run in Batch: AK240619, Run Date: 06/19/2024 18:29, Prep Date: 06/19/2024, Matrix: WW, Dilution: 1

Analyte	Flags	Conc	RDL	Units
PFBA		ND	10	ng/l
PFMPA		ND	2	ng/l
FPrPA (3:3 FTCA)		ND	10	ng/l
PFPeA		ND	4	ng/l
PFPPrS		ND	2	ng/l
PFMBA		ND	2	ng/l
4:2 FTSA		ND	2	ng/l
NFDHA		ND	2	ng/l
PFHxA		ND	2	ng/l
PFBS		ND	2	ng/l
HFPO-DA		ND	10	ng/l
FPePA (5:3 FTCA)		ND	10	ng/l
PFEESA		ND	2	ng/l
PFHpA		ND	2	ng/l
ADONA		ND	2	ng/l
PFPeS		ND	2	ng/l
6:2 FTSA		ND	2	ng/l
PFBSA		ND	2	ng/l
PFOA		ND	2	ng/l
PFHxS-BR		ND	2	ng/l
PFHxS		ND	2	ng/l
PFHxS-LN		ND	2	ng/l
FHpPA (7:3 FTCA)		ND	10	ng/l
PFNA		ND	2	ng/l
8:2 FTSA		ND	2	ng/l
PFECHS		ND	2	ng/l
PFHpS		ND	2	ng/l
N-MeFOSAA		ND	2	ng/l
PFDA		ND	2	ng/l
EtFOSAA		ND	4	ng/l
PFOS-BR		ND	2	ng/l
PFOS		ND	2	ng/l
PFHxSA		ND	2	ng/l
PFOS-LN		ND	2	ng/l
PFUnDA		ND	2	ng/l
9CL-PF3ONS		ND	2	ng/l
PFNS		ND	2	ng/l
PFDoDA		ND	2	ng/l
PFDS		ND	2	ng/l
PFTTrDA		ND	2	ng/l
FOSA		ND	2	ng/l
11CL-PF3OUdS		ND	2	ng/l
PFTTeDA		ND	4	ng/l
PFDOS		ND	6	ng/l
NMeFOSE		ND	4	ng/l
NMeFOSAM		ND	2	ng/l

QC Report - Batch QC Results

Organics - Volatiles, Prep Batch ID: PF240619W1 (continued)

Surrogates: Yes, QC Types: BLK/LCS/LCSD/MS/DUP

Blank (BLK) (continued)

Lab Sample ID: AK240619.BLK240619

Run in Batch: AK240619, Run Date: 06/19/2024 18:29, Prep Date: 06/19/2024, Matrix: WW, Dilution: 1

Analyte	Flags	Conc	RDL	Units
NEtFOSE		ND	4	ng/l
NEtFOSAM		ND	2	ng/l

Laboratory Control Sample (LCS)

Lab Sample ID: AK240619.LCS240619

Run in Batch: AK240619, Run Date: 06/19/2024 17:49, Prep Date: 06/19/2024, Matrix: WW, Dilution: 1

Analyte	Flags	% Rec	LCL	UCL
PFBA		117.6	70.0	130.0
PFMPA		83.0	70.0	130.0
FPrPA (3:3 FTCA)		117.8	70.0	130.0
PFPeA		117.0	70.0	130.0
PFPPrS		106.0	70.0	130.0
PFMBA		85.0	70.0	130.0
4:2 FTSA		95.0	70.0	130.0
NFDHA		88.6	70.0	130.0
PFHxA		115.6	70.0	130.0
PFBS		112.8	70.0	130.0
HFPO-DA		99.8	70.0	130.0
FPePA (5:3 FTCA)		117.0	70.0	130.0
PFEESA		85.6	70.0	130.0
PFHpA		114.2	70.0	130.0
ADONA		112.8	70.0	130.0
PFPeS		108.4	70.0	130.0
6:2 FTSA		110.2	70.0	130.0
PFBSA		110.6	70.0	130.0
PFOA		99.2	70.0	130.0
PFHxS		108.8	70.0	130.0
FHpPA (7:3 FTCA)		102.6	70.0	130.0
PFNA		108.0	70.0	130.0
8:2 FTSA		99.4	70.0	130.0
PFECHS		93.4	70.0	130.0
PFHpS		127.0	70.0	130.0
N-MeFOSAA		118.4	70.0	130.0
PFDA		114.0	70.0	130.0
EtFOSAA		114.4	70.0	130.0
PFOS		109.0	70.0	130.0
PFHxSA		106.8	70.0	130.0
PFUnDA		129.8	70.0	130.0
9CL-PF3ONS		112.2	70.0	130.0
PFNS		99.8	70.0	130.0
PFDoDA		112.4	70.0	130.0
PFDS		114.6	70.0	130.0
PFTTrDA		115.6	70.0	130.0
FOSA		111.2	70.0	130.0
11CL-PF3OUdS		102.2	70.0	130.0
PFTeDA		99.4	70.0	130.0

QC Report - Batch QC Results

Organics - Volatiles, Prep Batch ID: PF240619W1 (continued)

Surrogates: Yes, QC Types: BLK/LCS/LCSD/MS/DUP

Laboratory Control Sample (LCS) (continued)

Lab Sample ID: AK240619.LCS240619

Run in Batch: AK240619, Run Date: 06/19/2024 17:49, Prep Date: 06/19/2024, Matrix: WW, Dilution: 1

Analyte	Flags	% Rec	LCL	UCL
PFDOS		89.6	70.0	130.0
NMeFOSE		99.4	70.0	130.0
NMeFOSAM		89.6	70.0	130.0
NEtFOSE		111.2	70.0	130.0
NEtFOSAM		96.0	70.0	130.0

Laboratory Control Sample Duplicate (LCSD)

Lab Sample ID: AK240619.LCSD240619, Parent Sample ID: AK240619.LCS240619

Run in Batch: AK240619, Run Date: 06/19/2024 18:09, Prep Date: 06/19/2024, Matrix: WW, Dilution: 1

Analyte	Flags	% Rec	LCL	UCL	RPD	RPD CL
PFBA		117.6	70.0	130.0	0.0	30.0
PFMPA		82.4	70.0	130.0	0.7	30.0
FPrPA (3:3 FTCA)		108.8	70.0	130.0	7.9	30.0
PFPeA		115.8	70.0	130.0	1.0	30.0
PFPPrS		105.4	70.0	130.0	0.6	30.0
PFMBA		83.6	70.0	130.0	1.7	30.0
4:2 FTSA		104.4	70.0	130.0	9.4	30.0
NFDHA		87.4	70.0	130.0	1.4	30.0
PFHxA		122.8	70.0	130.0	6.0	30.0
PFBS		106.8	70.0	130.0	5.5	30.0
HFPO-DA		94.8	70.0	130.0	5.1	30.0
FPePA (5:3 FTCA)		112.6	70.0	130.0	3.8	30.0
PFEESA		84.8	70.0	130.0	0.9	30.0
PFHpA		106.0	70.0	130.0	7.4	30.0
ADONA		120.6	70.0	130.0	6.7	30.0
PFPeS		100.4	70.0	130.0	7.7	30.0
6:2 FTSA		113.2	70.0	130.0	2.7	30.0
PFBSA		117.8	70.0	130.0	6.3	30.0
PFOA		112.8	70.0	130.0	12.8	30.0
PFHxS		102.4	70.0	130.0	6.1	30.0
FHpPA (7:3 FTCA)		119.8	70.0	130.0	15.5	30.0
PFNA		116.4	70.0	130.0	7.5	30.0
8:2 FTSA		125.8	70.0	130.0	23.4	30.0
PFECHS		101.2	70.0	130.0	8.0	30.0
PFHpS		113.0	70.0	130.0	11.7	30.0
N-MeFOSAA		119.0	70.0	130.0	0.5	30.0
PFDA		115.4	70.0	130.0	1.2	30.0
EtFOSAA		118.0	70.0	130.0	3.1	30.0
PFOS		113.8	70.0	130.0	4.3	30.0
PFHxSA		97.6	70.0	130.0	9.0	30.0
PFUnDA		117.6	70.0	130.0	9.9	30.0
9CL-PF3ONS		113.8	70.0	130.0	1.4	30.0
PFNS		108.0	70.0	130.0	7.9	30.0
PFDoDA		110.2	70.0	130.0	2.0	30.0
PFDS		114.0	70.0	130.0	0.5	30.0
PFTTrDA		110.6	70.0	130.0	4.4	30.0

QC Report - Batch QC Results

Organics - Volatiles, Prep Batch ID: PF240619W1 (continued)

Surrogates: Yes, QC Types: BLK/LCS/LCSD/MS/DUP

Laboratory Control Sample Duplicate (LCSD) (continued)

Lab Sample ID: AK240619.LCSD240619, Parent Sample ID: AK240619.LCS240619

Run in Batch: AK240619, Run Date: 06/19/2024 18:09, Prep Date: 06/19/2024, Matrix: WW, Dilution: 1

Analyte	Flags	% Rec	LCL	UCL	RPD	RPD CL
FOSA		104.2	70.0	130.0	6.5	30.0
11CL-PF3OUdS		106.0	70.0	130.0	3.7	30.0
PFTeDA		103.4	70.0	130.0	3.9	30.0
PFDOS		90.2	70.0	130.0	0.7	30.0
NMeFOSE		98.6	70.0	130.0	0.8	30.0
NMeFOSAM		86.8	70.0	130.0	3.2	30.0
NEtFOSE		97.4	70.0	130.0	13.2	30.0
NEtFOSAM		102.2	70.0	130.0	6.3	30.0

Matrix Spike (MS)

Lab Sample ID: AK240619.6323801M, Parent Sample ID: S63238.01

Run in Batch: AK240619, Run Date: 06/19/2024 22:29, Prep Date: 06/19/2024, Matrix: WW, Dilution: 2.04

Analyte	Flags	% Rec	LCL	UCL
PFBA		117.6	70.0	130.0
PFPeA		107.8	70.0	130.0
4:2 FTSA		98.0	70.0	130.0
PFHxA		95.9	70.0	130.0
PFBS		94.4	70.0	130.0
PFHpA		98.0	70.0	130.0
PFPeS		96.1	70.0	130.0
6:2 FTSA		107.8	70.0	130.0
PFOA		96.0	70.0	130.0
PFHxS		106.3	70.0	130.0
PFNA		98.0	70.0	130.0
8:2 FTSA		87.3	70.0	130.0
PFHpS		107.8	70.0	130.0
PFDA		107.8	70.0	130.0
N-MeFOSAA		127.5	70.0	130.0
EtFOSAA		117.6	70.0	130.0
PFOS		103.9	70.0	130.0
PFUnDA		117.6	70.0	130.0
PFNS		98.0	70.0	130.0
PFDoDA		117.6	70.0	130.0
PFDS		107.8	70.0	130.0
PFTrDA		117.6	70.0	130.0
FOSA		107.8	70.0	130.0
PFTeDA		98.0	70.0	130.0
11CL-PF3OUdS		97.1	70.0	130.0
9CL-PF3ONS		107.8	70.0	130.0
ADONA		107.8	70.0	130.0
HFPO-DA		90.2	70.0	130.0
FHpPA (7:3 FTCA)		98.0	70.0	130.0
FPePA (5:3 FTCA)		93.1	70.0	130.0
FPrPA (3:3 FTCA)		107.8	70.0	130.0
PFBSA		106.3	70.0	130.0
PFECHS		95.1	70.0	130.0

QC Report - Batch QC Results

Organics - Volatiles, Prep Batch ID: PF240619W1 (continued)

Surrogates: Yes, QC Types: BLK/LCS/LCSD/MS/DUP

Matrix Spike (MS) (continued)

Lab Sample ID: AK240619.6323801M, Parent Sample ID: S63238.01

Run in Batch: AK240619, Run Date: 06/19/2024 22:29, Prep Date: 06/19/2024, Matrix: WW, Dilution: 2.04

Analyte	Flags	% Rec	LCL	UCL
PFHxSA		98.0	70.0	130.0

Duplicate (DUP)

Lab Sample ID: AK240619.6323802D, Parent Sample ID: S63238.02

Run in Batch: AK240619, Run Date: 06/19/2024 23:09, Prep Date: 06/19/2024, Matrix: WW, Dilution: 2.07

Analyte	Flags	RPD	RPD CL
PFBA	J	10.8	30.0
PFPeA	J	6.1	30.0
4:2 FTSA		NC	30.0
PFHxA		8.9	30.0
PFBS		7.7	30.0
PFHpA	J	0.0	30.0
PFPeS		NC	30.0
6:2 FTSA		NC	30.0
PFOA		8.9	30.0
PFHxS		14.3	30.0
PFHxS-LN	J	19.0	30.0
PFHxS-BR		NC	30.0
PFNA		NC	30.0
8:2 FTSA		NC	30.0
PFHpS		NC	30.0
PFDA		NC	30.0
N-MeFOSAA		NC	30.0
EtFOSAA		NC	30.0
PFOS		18.2	30.0
PFOS-LN		15.0	30.0
PFOS-BR		11.3	30.0
PFUnDA		NC	30.0
PFNS		NC	30.0
PFDoDA		NC	30.0
PFDS		NC	30.0
PFTTrDA		NC	30.0
FOSA		NC	30.0
PFTeDA		NC	30.0
11CL-PF3OUdS		NC	30.0
9CL-PF3ONS		NC	30.0
ADONA		NC	30.0
HFPO-DA		NC	30.0
FHpPA (7:3 FTCA)		NC	30.0
FPePA (5:3 FTCA)		NC	30.0
FPrPA (3:3 FTCA)		NC	30.0
PFBSA	*	200.0	30.0
PFECHS		2.4	30.0
PFHxSA		NC	30.0



2680 East Lansing Dr., East Lansing, MI 48823
 Phone (517) 332-0167 Fax (517) 332-4034
 www.meritlabs.com

C.O.C. PAGE # 1 OF 1 155561

REPORT TO

CHAIN OF CUSTODY RECORD

INVOICE TO

CONTACT NAME Clifford Yantz / Kevin Schneider
 COMPANY Ramboll
 ADDRESS 2090 Commonwealth Blvd
 CITY Ann Arbor STATE MI ZIP CODE 48105
 PHONE NO. CELL NO. 313-333-0211 P.O. NO. 1940008845 Inst 37
 E-MAIL ADDRESS Kevin.Schneider@Ramboll.com Clifford.Yantz@Ramboll.com QUOTE NO.

CONTACT NAME SAME
 COMPANY
 ADDRESS
 CITY STATE ZIP CODE
 PHONE NO. E-MAIL ADDRESS

PROJECT NO./NAME RACER Coldwater Road SAMPLER(S) - PLEASE PRINT/SIGN NAME Kevin Schneider K SCL
 TURNAROUND TIME REQUIRED 1 DAY 2 DAYS 3 DAYS STANDARD OTHER
 DELIVERABLES REQUIRED STD LEVEL II LEVEL III LEVEL IV EDD OTHER

MATRIX W=WATER GW=GROUNDWATER WW=WASTEWATER S=SOIL L=LIQUID SD=SOLID
 CODE: SL=SLUDGE DW=DRINKING WATER O=OIL WP=WIFE A=AIR WS=WASTE

ANALYSIS (ATTACH LIST IF MORE SPACE IS REQUIRED)

Certifications
 OHIO VAP Drinking Water
 DoD NPDES

Project Locations
 Detroit New York
 Other

Special Instructions

MERIT LAB NO. <small>FOR LAB USE ONLY</small>	COLLECTION		SAMPLE TAG IDENTIFICATION-DESCRIPTION	MATRIX	# OF BOTTLES	NONE	HCl	HNO ₃	H ₂ SO ₄	NaOH	MeOH	OTHER	PFAS (7979)							
	DATE	TIME																		
63238.01	6/17/24	1410	SS-10-06172024	L	3	X							X							
.02	6/17/24	1340	SS-12-06172024	L	3	X							X							
.03	6/17/24	1308	SS-14-06172024	L	3	X							X							
.04	6/17/24	1258	SS-15-06172024	L	3	X							X							
.05	6/17/24	1245	SS-16-06172024	L	3	X							X							
.06	6/17/24	1328	MH-10E-W-06172024	L	3	X							X							
.07	6/17/24	1316	SS-23-06172024	L	3	X							X							
.08	6/17/24	1415	Field Blank-06172024	L	1	X							X							

RELINQUISHED BY: [Signature] Sampler DATE 6/17/24 TIME 1635
 RECEIVED BY: Johanna Murray DATE 6/17/24 TIME 1635

RELINQUISHED BY: SIGNATURE/ORGANIZATION DATE TIME
 RECEIVED BY: SIGNATURE/ORGANIZATION DATE TIME

SEAL NO. SEAL INTACT YES NO INITIALS
 SEAL NO. SEAL INTACT YES NO INITIALS

NOTES: 10E TEMP. ON ARRIVAL 14.2

PLEASE NOTE: SIGNING ACKNOWLEDGES ADHERENCE TO MERIT'S SAMPLE ACCEPTANCE POLICY ON REVERSE SIDE