

VB Landfill

~~50000 Ecorse Rd~~

Belleville, MI 48111

50700 Ecorse Road

Inquiry Number: 7102605.1

August 30, 2022

The EDR Aerial Photo Decade Package



6 Armstrong Road, 4th floor
Shelton, CT 06484
Toll Free: 800.352.0050
www.edrnet.com

EDR Aerial Photo Decade Package

08/30/22

Site Name:

VB Landfill
~~50000 Eeorse Rd~~
Belleville, MI 48111
EDR Inquiry # 7102605.1

Client Name:

The Mannik & Smith Group
2365 Haggerty Road South
Canton, MI 48188
Contact: Tom Peters



Environmental Data Resources, Inc. (EDR) Aerial Photo Decade Package is a screening tool designed to assist environmental professionals in evaluating potential liability on a target property resulting from past activities. EDR's professional researchers provide digitally reproduced historical aerial photographs, and when available, provide one photo per decade.

Search Results:

<u>Year</u>	<u>Scale</u>	<u>Details</u>	<u>Source</u>
2016	1"=500'	Flight Year: 2016	USDA/NAIP
2012	1"=500'	Flight Year: 2012	USDA/NAIP
2009	1"=500'	Flight Year: 2009	USDA/NAIP
2006	1"=500'	Flight Year: 2006	USDA/NAIP
1999	1"=500'	Acquisition Date: March 27, 1999	USGS/DOQQ
1997	1"=500'	Flight Date: April 26, 1997	DTE
1994	1"=500'	Flight Date: May 13, 1994	USDA
1987	1"=500'	Flight Date: June 05, 1987	USDA
1983	1"=500'	Flight Date: May 05, 1983	USDA
1978	1"=500'	Flight Date: June 28, 1978	USDA
1972	1"=500'	Flight Date: July 01, 1972	USDA
1969	1"=500'	Flight Date: April 12, 1969	USDA
1961	1"=500'	Flight Date: May 23, 1961	DTE
1955	1"=500'	Flight Date: September 06, 1955	USDA
1952	1"=500'	Flight Date: June 10, 1952	DTE
1949	1"=500'	Flight Date: April 29, 1949	DTE
1940	1"=500'	Flight Date: July 04, 1940	USDA
1937	1"=500'	Flight Date: July 23, 1937	USDA

1970 Aerial from the CCR is also included

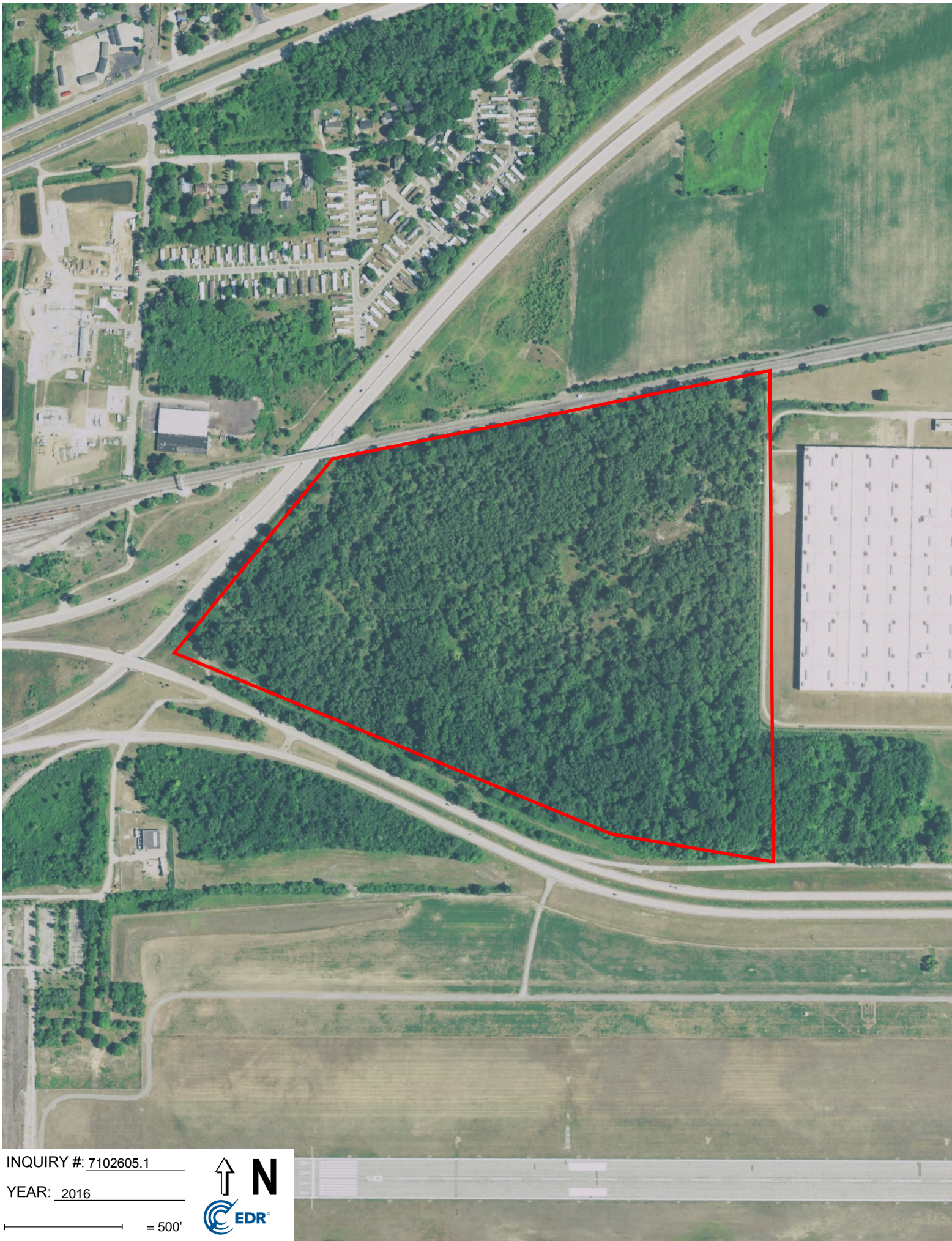
When delivered electronically by EDR, the aerial photo images included with this report are for ONE TIME USE ONLY. Further reproduction of these aerial photo images is prohibited without permission from EDR. For more information contact your EDR Account Executive.

Disclaimer - Copyright and Trademark Notice

This Report contains certain information obtained from a variety of public and other sources reasonably available to Environmental Data Resources, Inc. It cannot be concluded from this Report that coverage information for the target and surrounding properties does not exist from other sources. NO WARRANTY EXPRESSED OR IMPLIED, IS MADE WHATSOEVER IN CONNECTION WITH THIS REPORT. ENVIRONMENTAL DATA RESOURCES, INC. SPECIFICALLY DISCLAIMS THE MAKING OF ANY SUCH WARRANTIES, INCLUDING WITHOUT LIMITATION, MERCHANTABILITY OR FITNESS FOR A PARTICULAR USE OR PURPOSE. ALL RISK IS ASSUMED BY THE USER. IN NO EVENT SHALL ENVIRONMENTAL DATA RESOURCES, INC. BE LIABLE TO ANYONE, WHETHER ARISING OUT OF ERRORS OR OMISSIONS, NEGLIGENCE, ACCIDENT OR ANY OTHER CAUSE, FOR ANY LOSS OF DAMAGE, INCLUDING, WITHOUT LIMITATION, SPECIAL, INCIDENTAL, CONSEQUENTIAL, OR EXEMPLARY DAMAGES. ANY LIABILITY ON THE PART OF ENVIRONMENTAL DATA RESOURCES, INC. IS STRICTLY LIMITED TO A REFUND OF THE AMOUNT PAID FOR THIS REPORT. Purchaser accepts this Report "AS IS". Any analyses, estimates, ratings, environmental risk levels or risk codes provided in this Report are provided for illustrative purposes only, and are not intended to provide, nor should they be interpreted as providing any facts regarding, or prediction or forecast of, any environmental risk for any property. Only a Phase I Environmental Site Assessment performed by an environmental professional can provide information regarding the environmental risk for any property. Additionally, the information provided in this Report is not to be construed as legal advice.

Copyright 2022 by Environmental Data Resources, Inc. All rights reserved. Reproduction in any media or format, in whole or in part, of any report or map of Environmental Data Resources, Inc., or its affiliates, is prohibited without prior written permission.

EDR and its logos (including Sanborn and Sanborn Map) are trademarks of Environmental Data Resources, Inc. or its affiliates. All other trademarks used herein are the property of their respective owners.



INQUIRY #: 7102605.1

YEAR: 2016

— = 500'



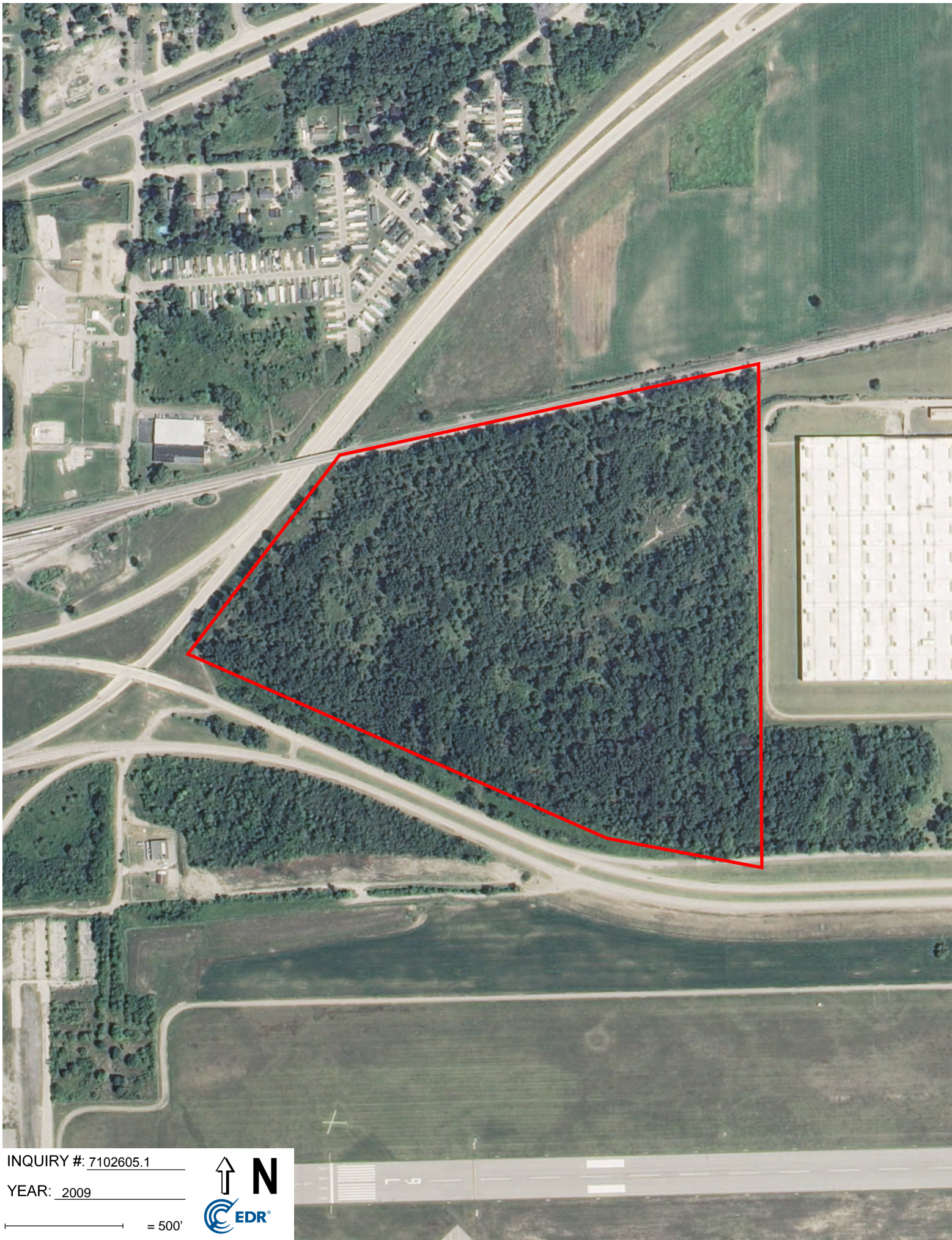


INQUIRY #: 7102605.1

YEAR: 2012

— = 500'





INQUIRY #: 7102605.1

YEAR: 2009

— = 500'



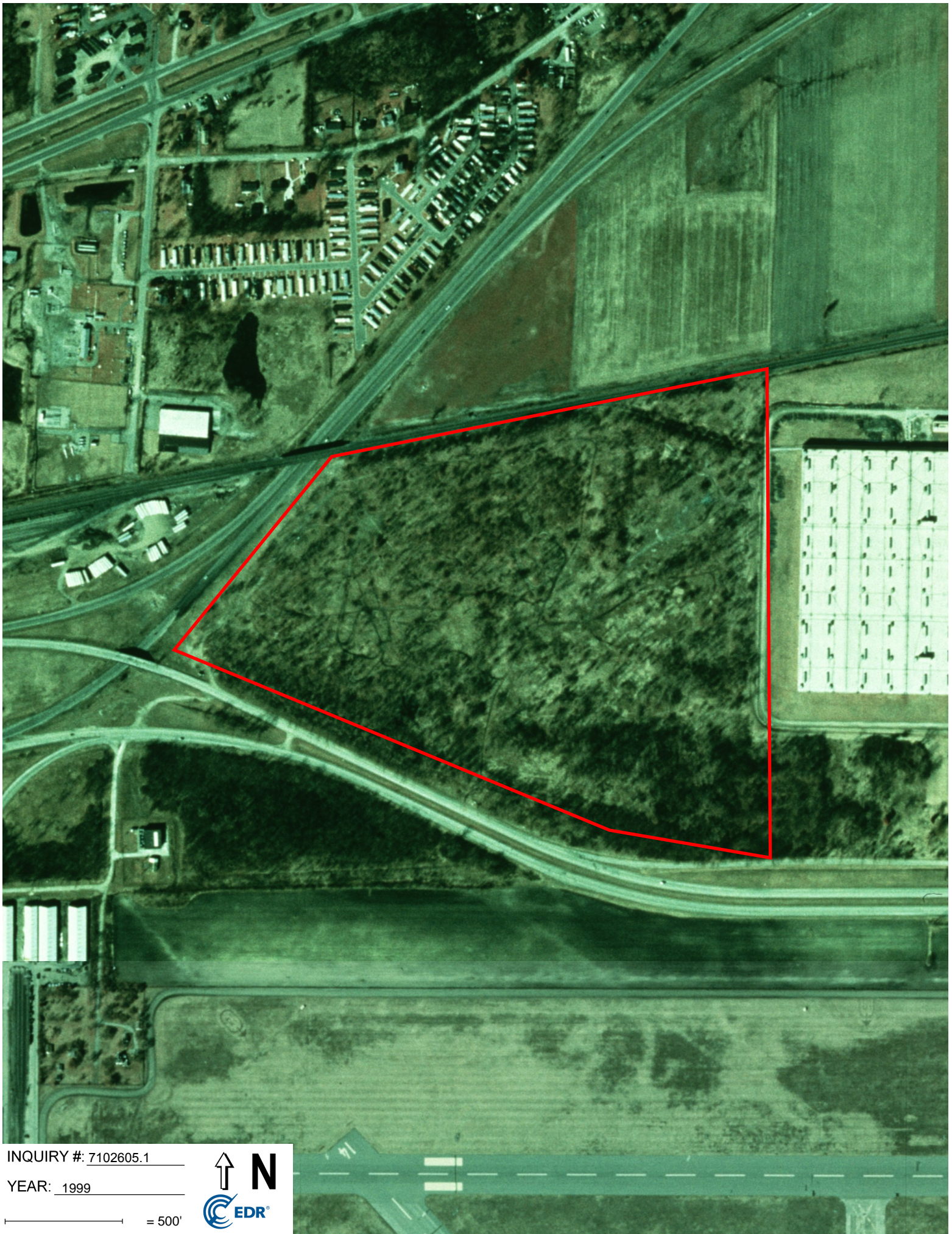


INQUIRY #: 7102605.1

YEAR: 2006

— = 500'





INQUIRY #: 7102605.1

YEAR: 1999

— = 500'





INQUIRY #: 7102605.1

YEAR: 1997

— = 500'





INQUIRY #: 7102605.1

YEAR: 1994

— = 500'





INQUIRY #: 7102605.1

YEAR: 1987

— = 500'



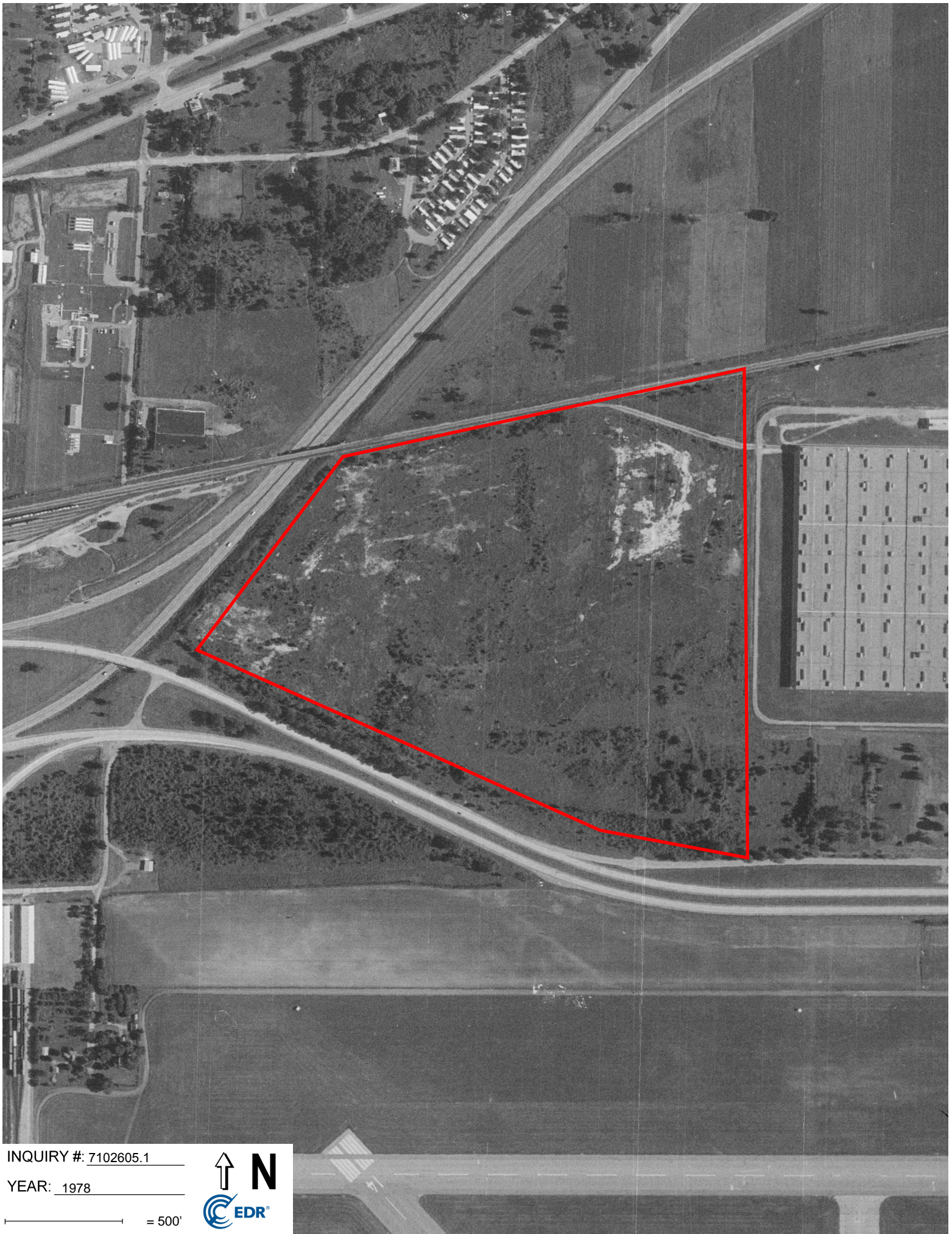


INQUIRY #: 7102605.1

YEAR: 1983

— = 500'



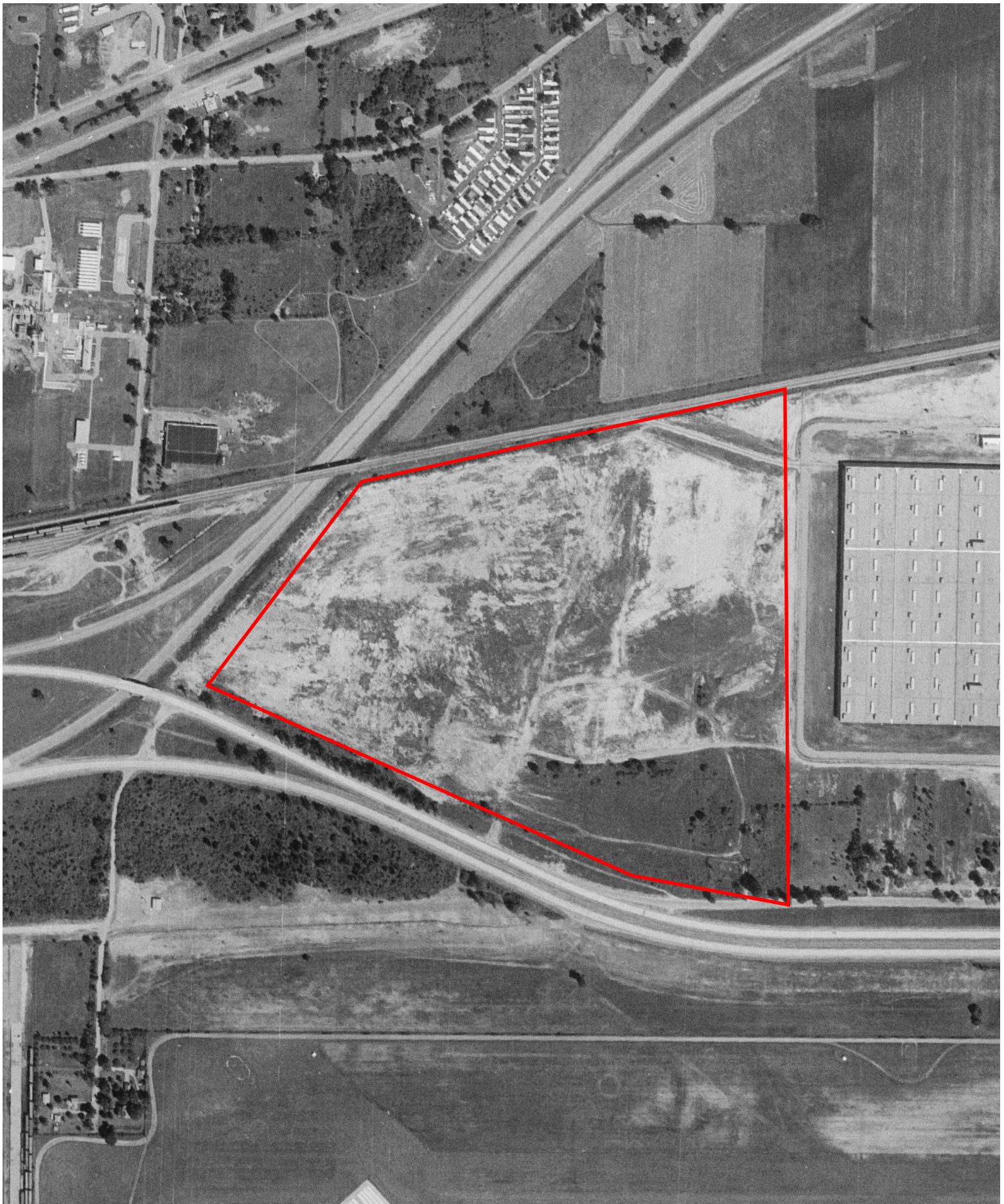


INQUIRY #: 7102605.1

YEAR: 1978

— = 500'





INQUIRY #: 7102605.1

YEAR: 1972

— = 500'



APR. 26 -70

151.91 A

M.D.S.H CZL- 10

1970 Aerial from 2011 CCR

SITE LOCATION



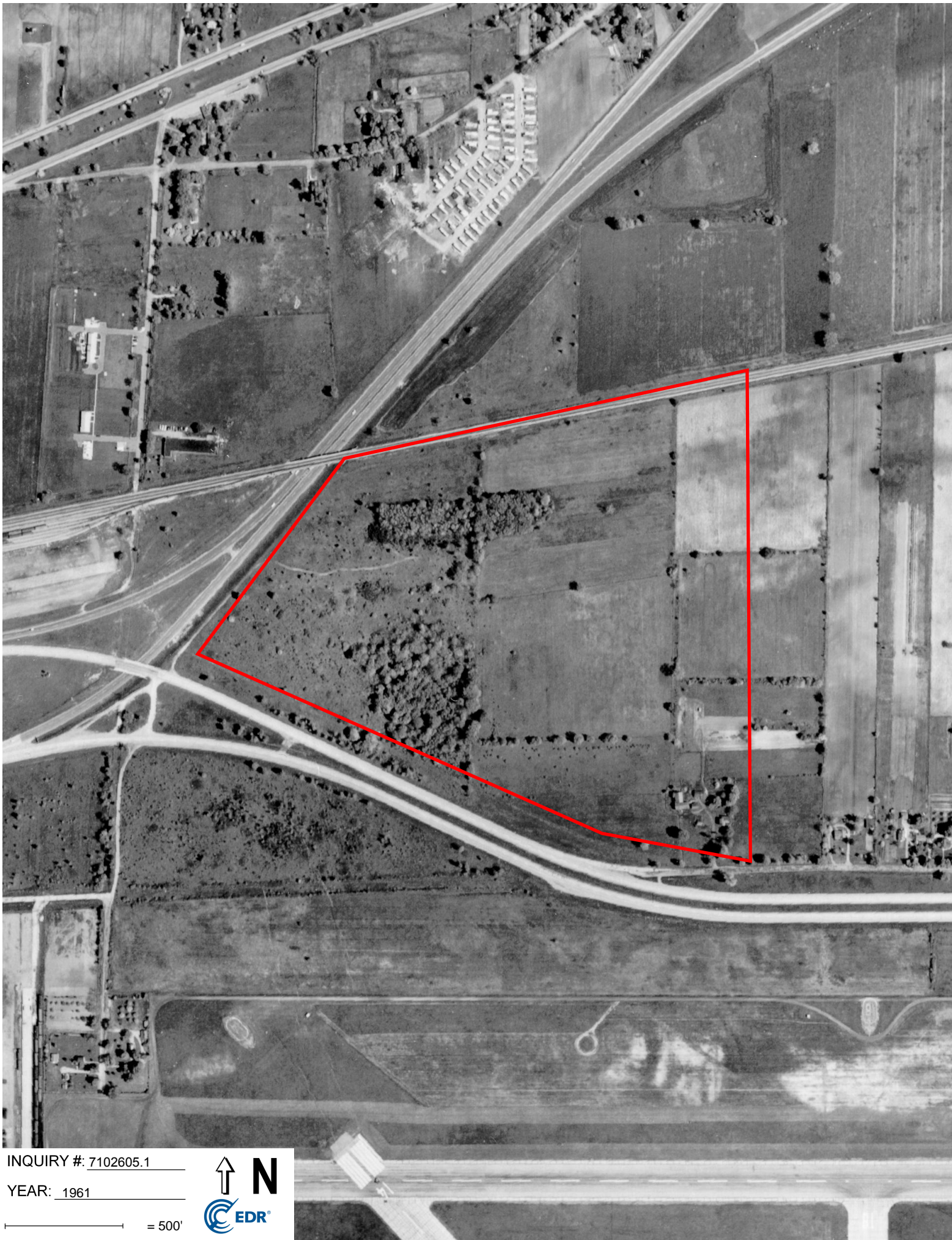


INQUIRY #: 7102605.1

YEAR: 1969

— = 500'





INQUIRY #: 7102605.1

YEAR: 1961

— = 500'



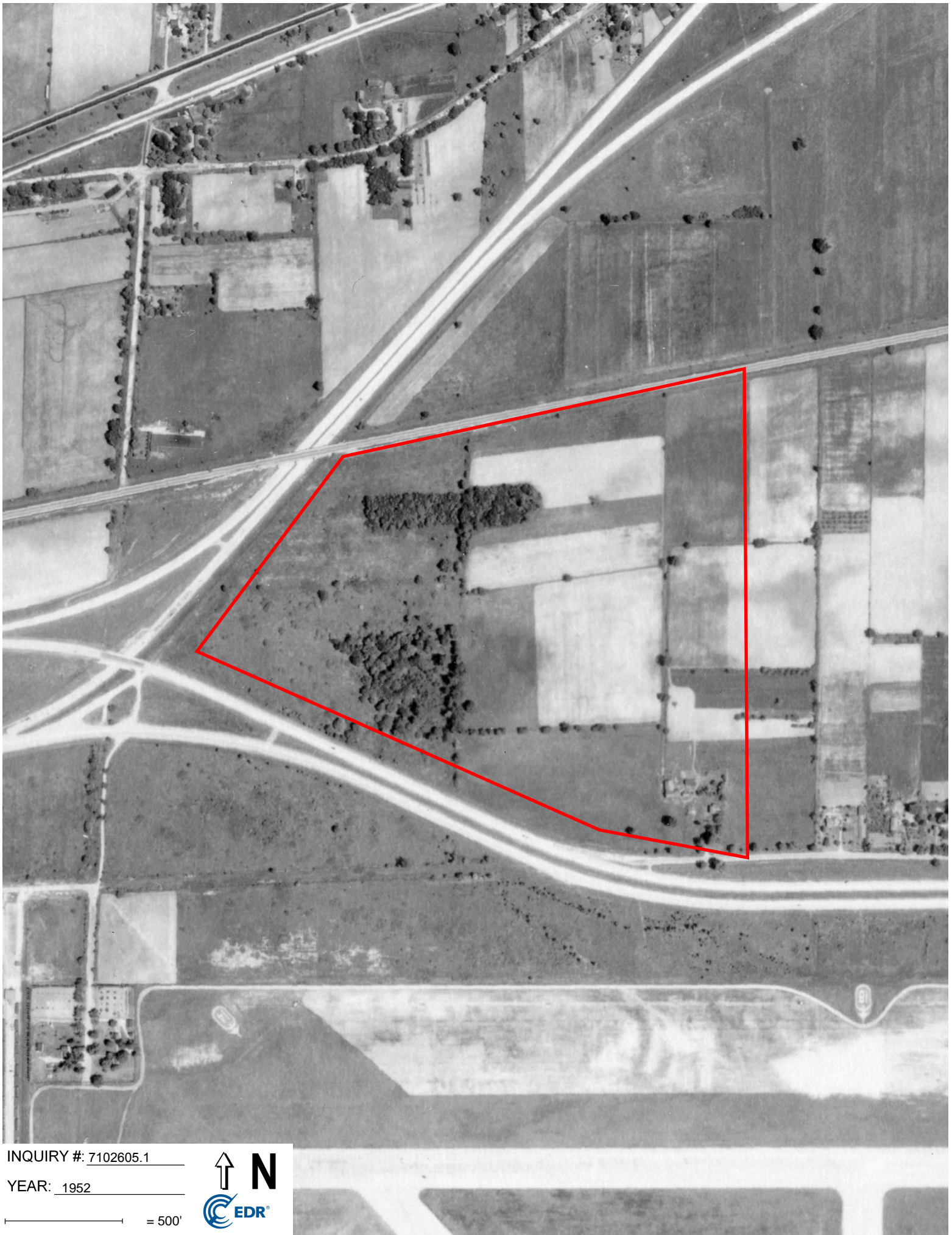


INQUIRY #: 7102605.1

YEAR: 1955

— = 500'



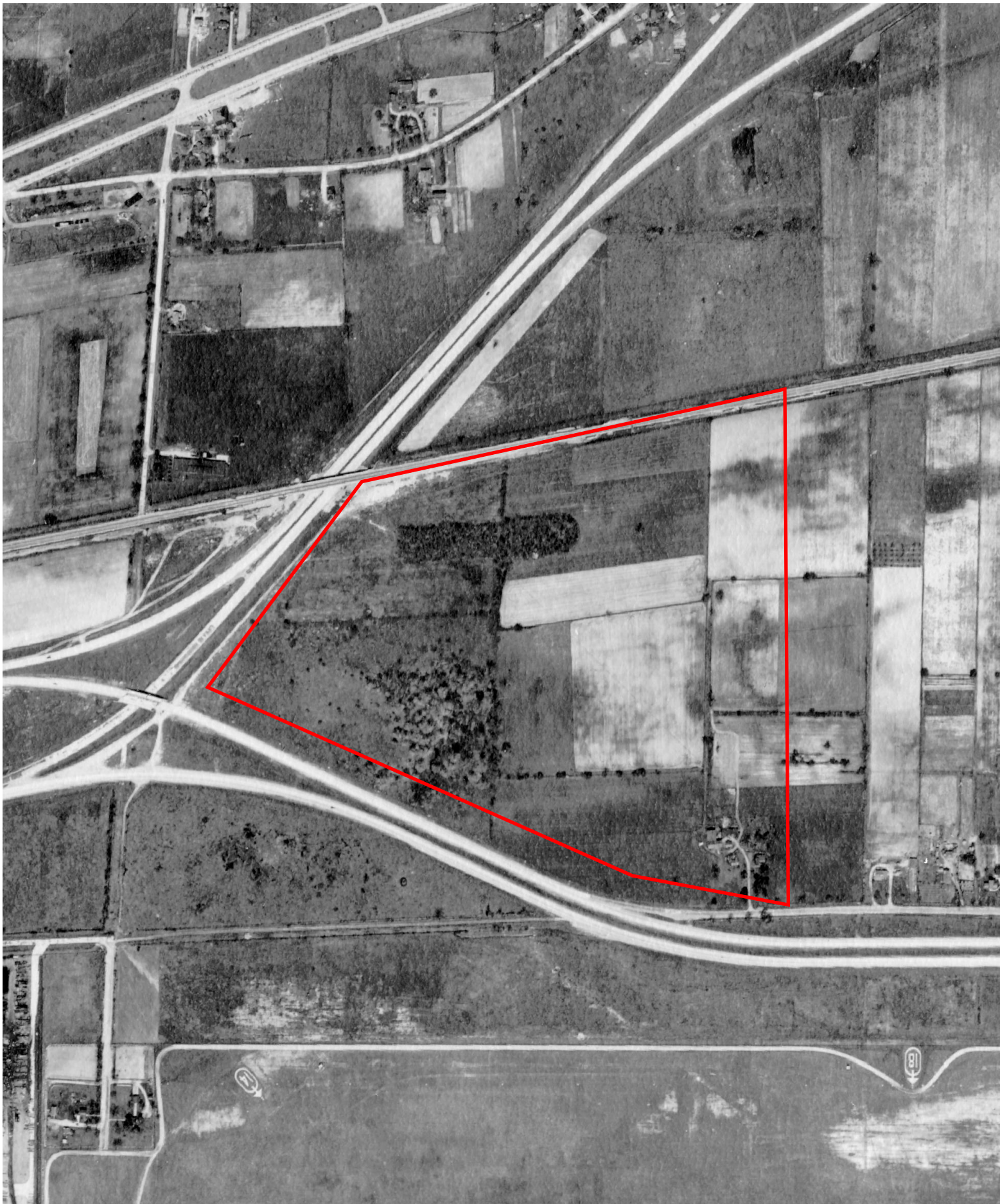


INQUIRY #: 7102605.1

YEAR: 1952

— = 500'





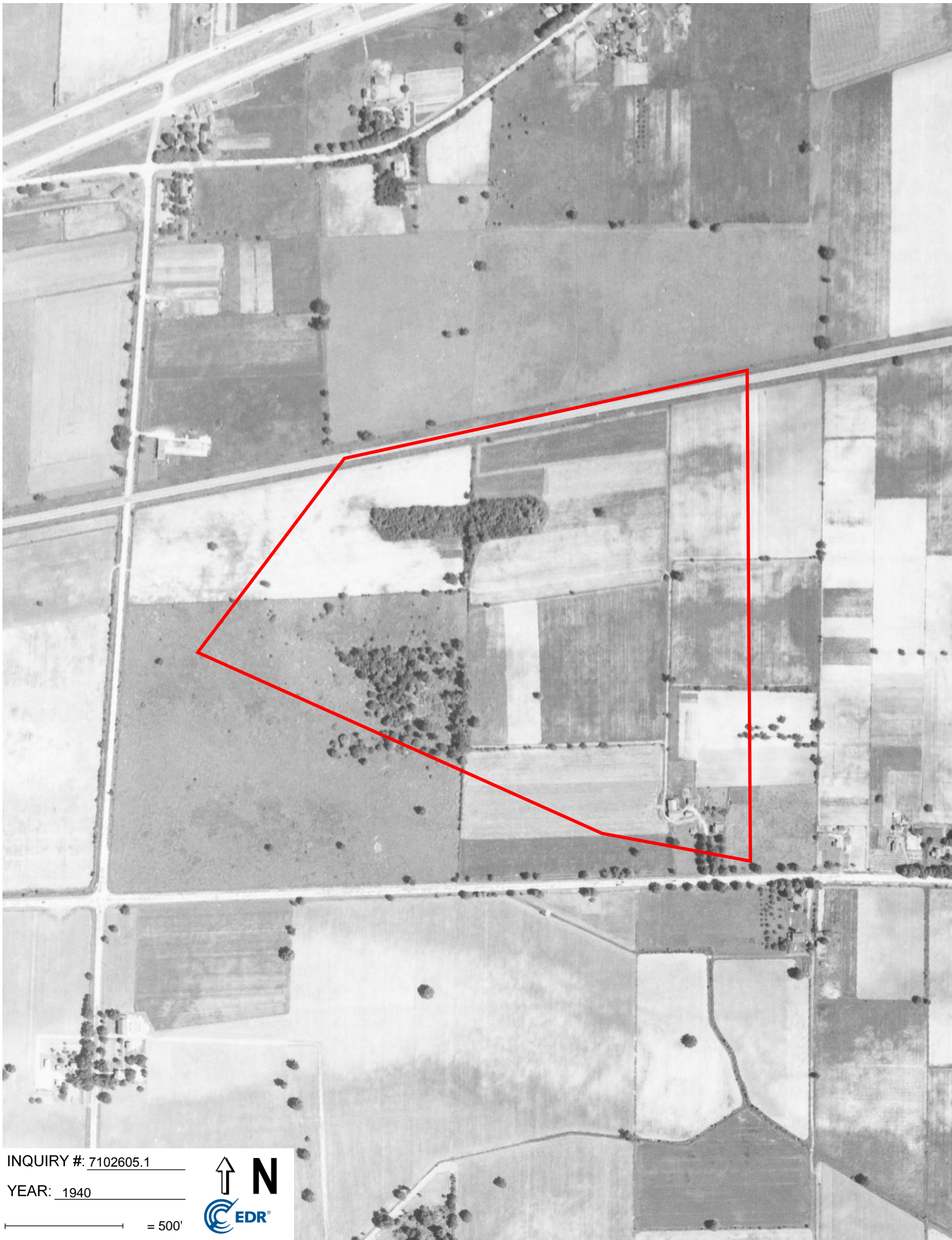
INQUIRY #: 7102605.1

YEAR: 1949

— = 500'



81

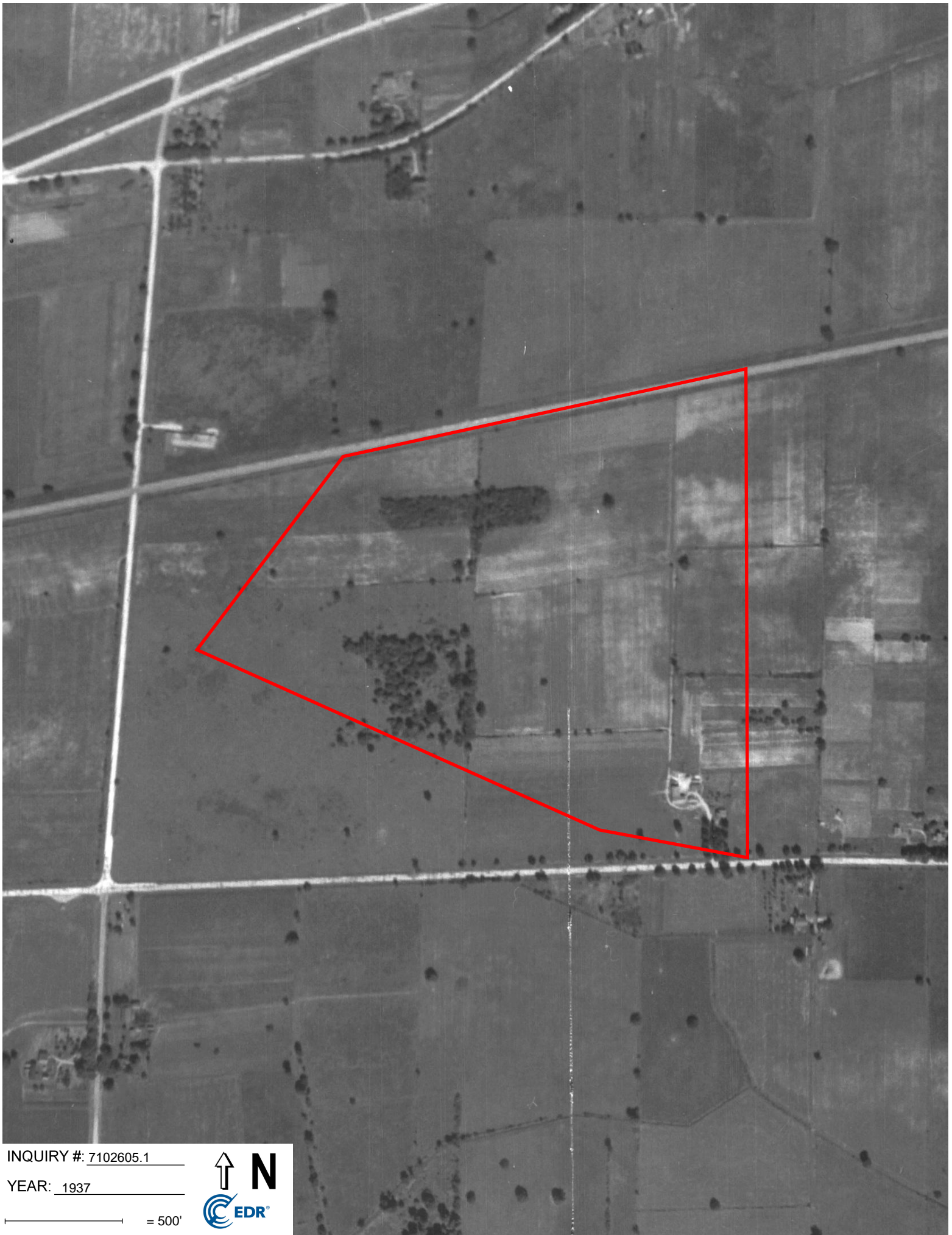


INQUIRY #: 7102605.1

YEAR: 1940

— = 500'





INQUIRY #: 7102605.1

YEAR: 1937

— = 500'

