



ARCADIS G&M of Michigan, LLC
10559 Citation Drive
Suite 100
Brighton
Michigan 48116
Tel 810 229 8594
Fax 810 229 8837
www.arcadis-us.com

Transmitted via E-mail

Peter Quackenbush
Michigan Department of Environmental Quality, RMD
525 West Allegan Street
Constitution Hall, North Atrium
Lansing, Michigan 48909-7741

ENVIRONMENT

Subject:
Quarterly Progress Report – 2nd Quarter 2012
Lansing Plants 2, 3, and 6 Industrial Land
USEPA I.D.s MID980700827 and MID005356928
2801 West Saginaw St., 2800 West Saginaw St., and 401 Verlinden St.
Lansing, Michigan

Date:
July 16, 2012

Contact:
Amy Hoeksema

Dear Mr. Quackenbush:

Phone:
810.225.1911

ARCADIS is submitting this Quarterly Progress Report on behalf of Revitalizing Auto Communities Environmental Response (RACER) Trust for the Lansing Plants 2, 3, and 6, Industrial Land, in Lansing, Michigan (the Sites). This Quarterly Progress Report covers the period of April 1, 2012 through June 30, 2012. The following briefly summarizes the data collected, work performed, problems encountered, project schedule, and estimated percent complete for various activities. The activities discussed in this report were completed in accordance with the approved Resource Conservation and Recovery Act Facility Investigation (RFI) Work Plan (ARCADIS, August 2011) and the RFI Phase 2 Work Plan (ARCADIS, March 12, 2012)

Email:
Amy.Hoeksema@arcadis-us.com

Our ref:
B0064479.2012
B0064480.2012
B0064481.2012

Data Collected During the 2nd Quarter of 2012

The following samples were collected during the 2nd Quarter of 2012. Summary tables of the data collected during the 2nd quarter of 2012 will be provided in the Phase 2 Investigation Summary report scheduled to be completed during the 4th quarter 2012 or 1st quarter 2013.

- Plant 2: Two (2) bedrock monitoring wells, MW-12-01 and MW-12-02 (figure 1), were sampled on April 17 and 18, 2012, and analyzed for Target Compound List (TCL) Volatile Organic Compounds (VOCs), TCL Semi-Volatile Organic

Imagine the result

Compounds (SVOCs), and Target Analyte List (TAL) Metals. Refer to the Quality Assurance Project Plan (QAPP) in the RFI Work Plan (August 2011) for a full list of analytes on these lists. Between April 30, 2012 and June 8, 2012, the Assessment Stage of the RFI Work Plan Phase 2 Investigation was implemented at the Sites, resulting in the installation and sampling of 111 soil borings at Plant 2. From these borings a total of 938 soil samples and 175 groundwater samples were collected and submitted to either Stone Environmental, Inc. (Stone), the on-site mobile laboratory or Merit, Inc. (Merit) the fixed lab located in Lansing, Michigan. The analyses completed for these samples are described below:

- 417 soil samples and 79 groundwater samples were submitted to Stone and analyzed for TCL VOCs, including 1,4-Dioxane.
 - 521 soil samples and 96 groundwater samples were submitted to Merit and analyzed for some or all of the following: TCL VOCs, TCL SVOCs, PCBs, and TAL Metals. The actual analysis completed on each sample was based on the constituents of concern (COCs) present at a particular Area of Interest (AOI) as determined from the Phase I Investigation completed in 2011.
 - A Non-Aqueous Phase Liquid (NAPL) sample was taken from P2-SB-37 on May 31, 2012 and submitted to Merit for PCB analysis.
- Plant 3: Between April 30, 2012 and June 8, 2012, the Assessment Stage of the RFI Work Plan Phase 2 Investigation was implemented at the Sites, resulting in the installation and sampling of 75 soil borings. From these borings, a total of 399 soil samples and 55 groundwater samples were submitted for analysis. The analyses completed for these samples is described below:
- 99 soil samples and 21 groundwater samples were submitted to Stone and analyzed for TCL VOCs, including 1,4-Dioxane.
 - 300 soil samples and 34 groundwater samples were submitted to Merit and analyzed for some or all of the following: TCL VOCs, TCL SVOCs, PCBs, and TAL Metals. As noted above, the actual analysis completed on each sample was determined based on the Phase I Investigation results.
 - Off-site bedrock monitoring well MW-12-04, located west of Plant 3, (see Figure 2) was sampled on April 17, 2012, and analyzed for TCL VOCs, TCL SVOCs, and TAL Metals.

- Plant 6: Bedrock well MW-12-03 was sampled on April 18, 2012, and analyzed for TCL VOCs, TCL SVOCs, and TAL Metals. From April 30 to June 8, 2012, the Assessment Stage of the RFI Work Plan Phase 2 Investigation was implemented at the Sites, resulting in the installation and sampling of 75 soil borings. From these soil borings a total of 472 soil samples and 90 groundwater samples were submitted for analysis. The analyses completed for these samples is described below:
 - 197 soil samples and 38 groundwater samples were submitted to Stone and analyzed for TCL VOCs, including 1,4-Dioxane.
 - 275 soil samples and 52 groundwater samples were submitted to Merit and analyzed for some or all of the following: TCL VOCs, TCL SVOCs, PCBs, and TAL Metals. As noted above, the analysis completed was determined based on the Phase I Investigation results.

Work Performed During the 2nd Quarter of 2012

- Between April 16, 2012 and April 18, 2012, ARCADIS collected groundwater samples from each of the four (4) new sentinel bedrock monitoring wells (MW-12-01 through MW-12-04, see figures 1 and 2). In addition to collecting groundwater samples, groundwater elevation data was collected from the following bedrock groundwater monitoring wells:
 - Plant 3: MW-02-02, MW-02-03, MW-02-04, MW-04-01, MW-04-02, MW-04-03, MW-91-3 and MW-91-5.
 - Plant 6: MW-04-01 and MW-04-06.
- Between April 18, 2012 and April 27, 2012, ARCADIS located and marked the boring locations for each of the proposed Assessment Stage borings. Beginning April 23, 2012, Stock Drilling, Inc. of Ida, Michigan (Stock) mobilized to the Sites and began coring the concrete slabs at the proposed boring locations ahead of drilling activities.
- On April 30, 2012, GeoServ Inc. of New Hudson, Michigan (GeoServ) mobilized to the Sites and drilling activities began. GeoServ completed all Vertical Aquifer Borings (VAP) borings and Hydraulic Profile Tool (HPT) borings. Stock completed all shallow vadose zone borings and LIF borings. Between April 30 and June 8, 2012 the following drilling activities were completed:

- Plant 2: 111 soil borings; 9 VAP borings; 102 shallow Vadose Zone borings and 13 HPT borings were completed.
- Plant 3: 75 soil borings; 6 VAP borings and 69 shallow Vadose Zone borings were completed.
- Plant 6: 75 soil borings; 9 VAP borings; 66 shallow Vadose Zone borings and 12 HPT borings were completed.
- Between May 7, 2012 and May 16, 2012 40 Laser Induced Fluorescent (LIF) direct-push borings were completed in Area 5.2 at Plant 2. Between June 4, 2012 and June 6, 2012, an additional 16 LIF borings were completed in Area 5.2.
- Between May 11, 2012 and May 15, 2012, 16 LIF direct-push borings were completed in Area 17 at Plant 3.
- On May 22, 2012, a conference call was held with representatives from RACER Trust, MDEQ, ARCADIS and PM Environmental to review the initial findings from the Assessment Stage of the Phase 2 Investigation.
- The Assessment Stage of the Phase 2 Investigation was completed on June 8, 2012.

Problems Encountered

- Plant 2: The extent of LIF response in Area 5.2 was determined to be larger than estimated from Phase I boring data and covers approximately 2 acres. During the investigation in Area 5.2, a concrete subfloor was encountered at a depth of approximately 4-feet below grade. This subfloor caused delays in completing the LIF survey and some borings were not able to be advanced as deep as identified in the RFI Phase 2 Work Plan. These borings were augmented with borings that stepped out from the original locations in order to obtain samples and/or readings at depth. Plant 3: A second area of LIF response was discovered at Plant 3 on the southern edge of Area 17 approximately 120-feet south of the known NAPL in Area 17. This new area of LIF response appears to be limited in extent (approximately 75 feet by 50 feet).

Project Schedule – Near-Term Milestone Activities Anticipated During the Next Quarter

- Milestone meeting with MDEQ on July 19, 2012 to review the results from the Assessment Stage and to discuss the scope for the Characterization and Delineation stages.
- Begin the Characterization Stage and Delineation Stage of the Phase 2 Investigation field activities in August 2012.

If you have any questions, please call or e-mail me.

Sincerely,

ARCADIS G&M of Michigan, LLC



Amy L. Hoeksema, CPG
Project Manager

Attachments:

Figure 1 – Plants 2 & 6 Site Plan

Figure 2 – Plant 3 Site Plan

Copies:

Joe Rogers (MDEQ)

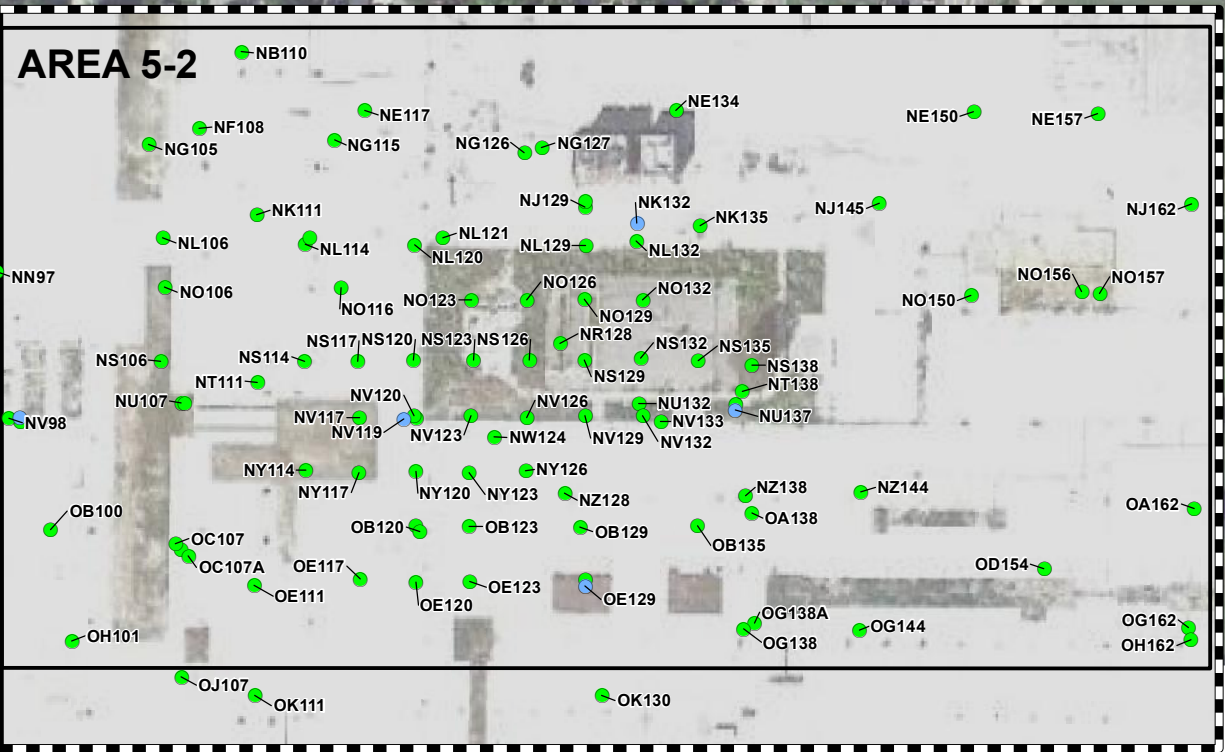
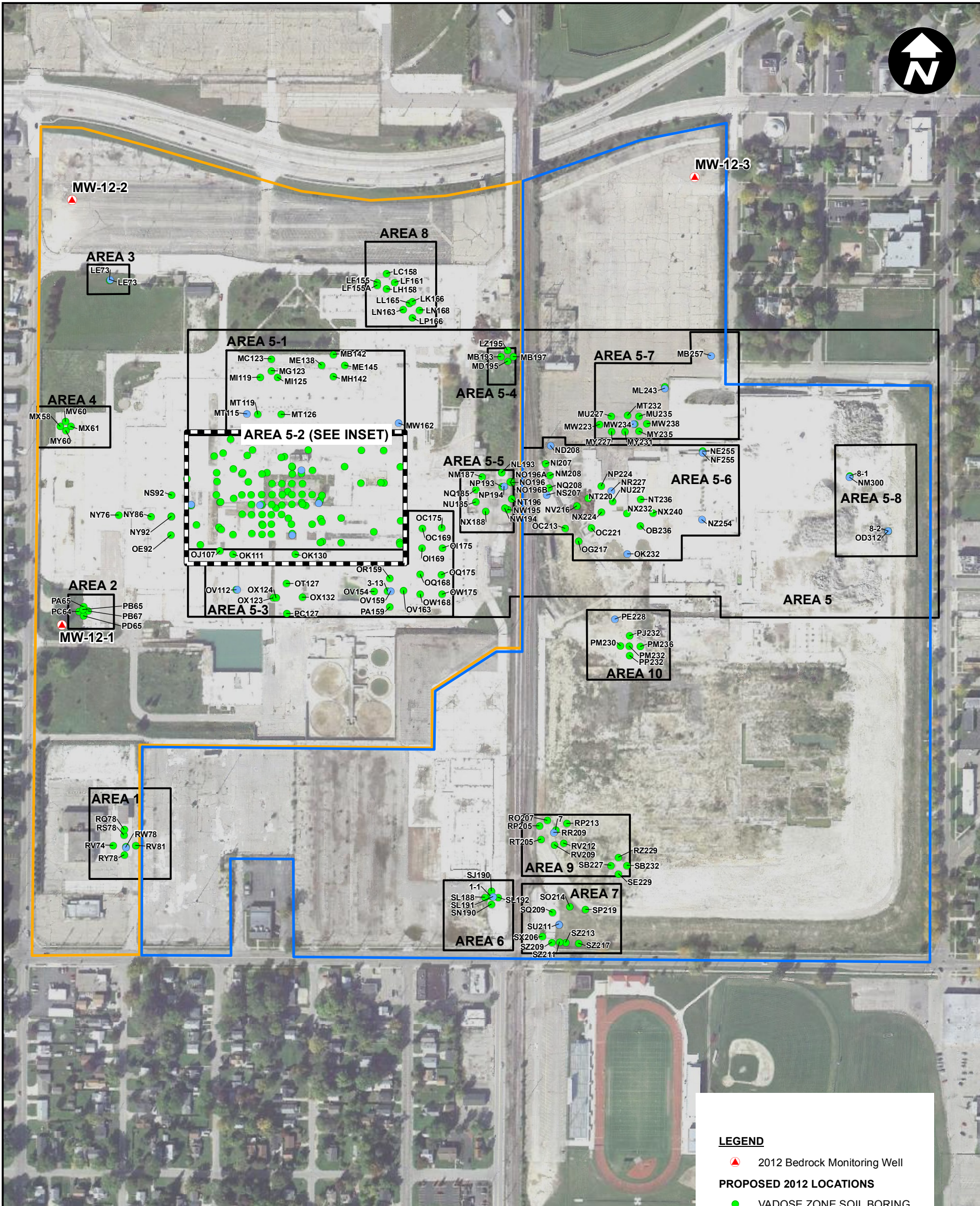
John McCabe (MDEQ)

Deborah R. Mackenzie-Taylor (MDEQ)

Grant Trigger (RACER)

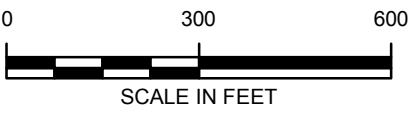
Dave Favero (RACER)

Figures



LEGEND

- 2012 Bedrock Monitoring Well
- PROPOSED 2012 LOCATIONS**
- VADOSE ZONE SOIL BORING
- VAP BORING
- PLANT 2 BOUNDARY
- PLANT 6 BOUNDARY
- WORK PLAN AREAS



AERIAL SOURCE: GOOGLE EARTH PRO, ACCESSED 7/10/2012
IMAGE DATE: 10/3/2010.

RACER TRUST
PLANTS 2, 3, & 6
LANSING, MICHIGAN

**SITE PLAN
PLANTS 2 AND 6**



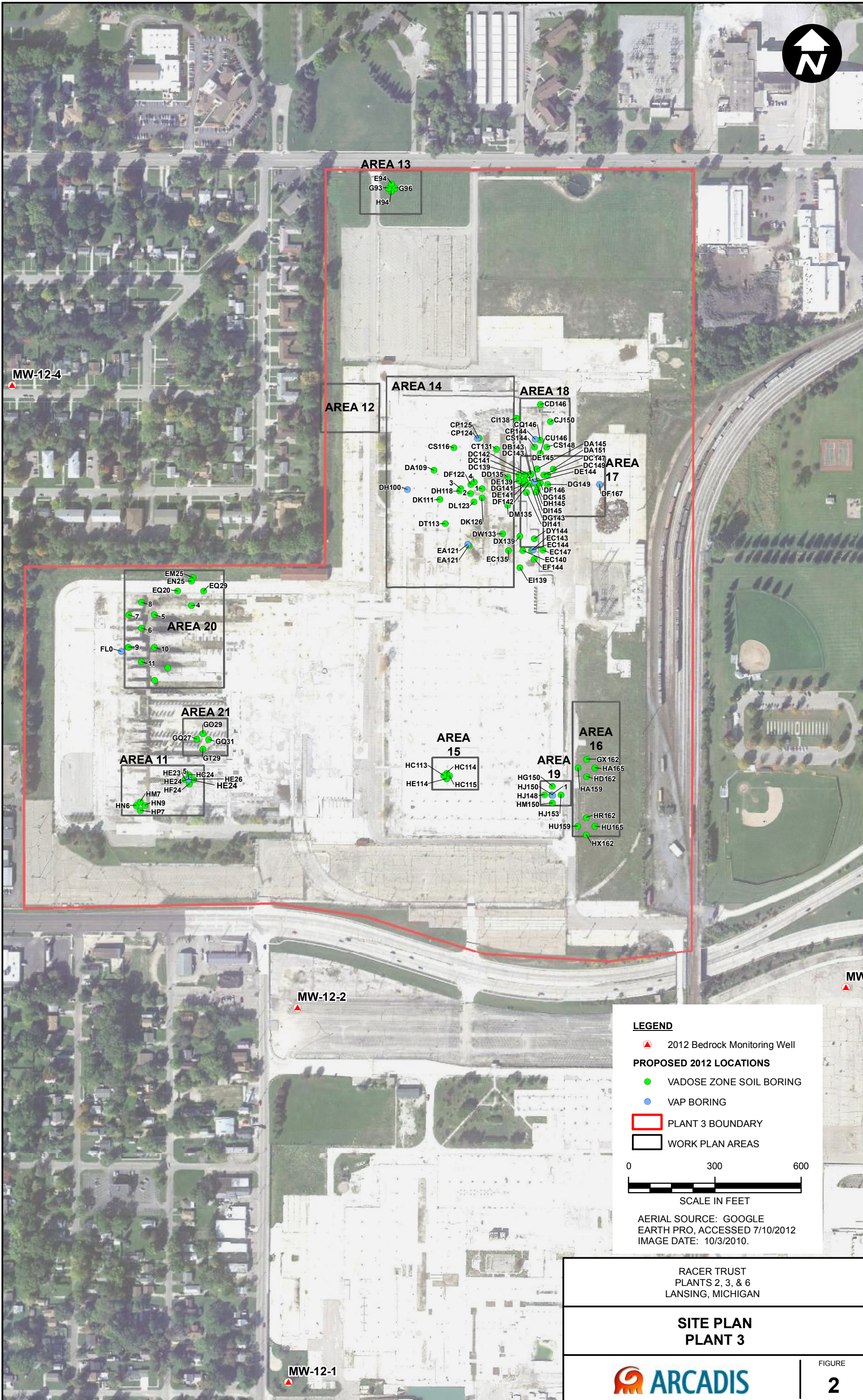
FIGURE

1






CITY: BRIGHTON DIV: ENV DB: A.YANITES PIC: PM: TR: PROJECT NUMBER: COORDINATE SYSTEM: NAD 1983 StatePlane Michigan South FIPS 2113 Feet Intl
FOR TOBI Y MotorsLiquidationCompany\ Lansing\Docs\PHASE 2 ANALYSIS\RACER Site Plan Plant 2 and 6.mxd PLOTTED: 7/11/2012 2:30:53 PM BY: rgmckinney

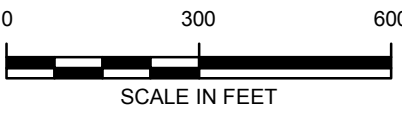


CITY: BRIGHTON DIV. ENV. DB: A.YANITES. PIC: PM. TR: PROJECT NUMBER: COORDINATE SYSTEM: NAD 1983 StatePlane Michigan South FIPS 2113 Feet Intl
FOR TOBI Y Motors Liquidation Company \Lansing\Docs\PHASE 2 ANALYSIS\RACER Site Plan Plant 3.mxd PLOTTED: 7/11/2012 3:34:46 PM BY: rgmckimney



LEGEND

-  2012 Bedrock Monitoring Well
- PROPOSED 2012 LOCATIONS**
-  VADOSE ZONE SOIL BORING
-  VAP BORING
-  PLANT 3 BOUNDARY
-  WORK PLAN AREAS



AERIAL SOURCE: GOOGLE
EARTH PRO. ACCESSED 7/10/2012
IMAGE DATE: 10/3/2010.

RACER TRUST
PLANTS 2, 3, & 6
LANSING, MICHIGAN

**SITE PLAN
PLANT 3**

