

Parcel C Northwest Corner of Ecorse and Denton Road

A photograph recording of trash needing to be removed.
Certain trash has been recently deposited and other trash was noted in GPS recordings of
August 2002 and February 2007.

Photographs are not inclusive and for general planning of work effort.

Photographs of certain GPS Items 039 to 048 are in this presentation

GPS Items 017 to 021 are not shown and to be identified

GPS Items 051 to 054 are not shown and to be identified.

List of items needed at Work Site

- Work Crew of three GGW employees – Green Works
- Work Crew of one or two TMRS employees - TMRS
- One Bobcat with trailer and Pick up Truck - TMRS
- One Chainsaw and branch cutting tools – TMRS
- Shovels and large containers for removal of pile of shingles - TMRS
- One 30 foot Roll Off for Trash - TMRS
- 100 heavy duty trash bags – TMRS
- Other items??

Parking, GM Guards and Bobcat

- Transportation vehicles and Bobcat Trailer need to be parked on Ecorse Road or Denton Road. GM guards are strict about using their service drive.
- On GM Service Drive, the Bobcat will hug tree line. At wooded entry point, a few branches will need to be cut. After that, the area is open and Bobcat should be able to easily maneuver

Parcel C Site

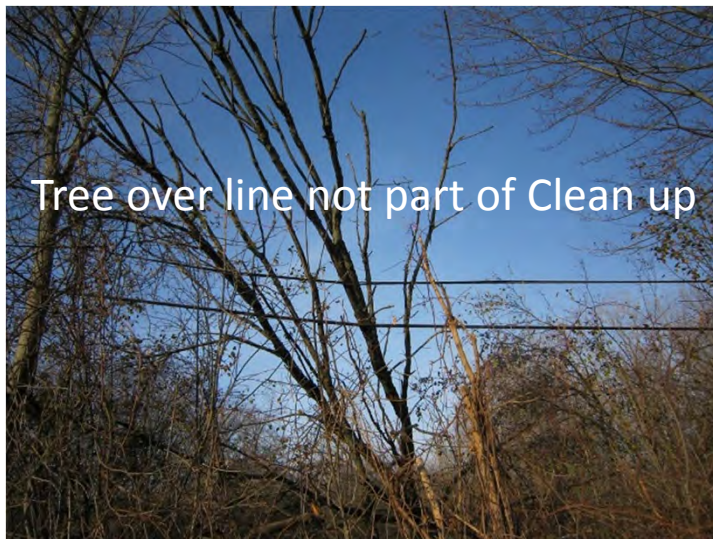
- Maps are from 2002 and 2007
- Trapezoid area is approximately $\frac{1}{2}$ mile x $\frac{1}{4}$ mile x $\frac{1}{2}$ mile x $\frac{1}{4}$ mile
- No residential structures were visible
- None of the large AST liquid containers were observed
- Additional tires will be need to be removed near the Willow Run factory. Approximately 20 tires

Denton Road



Work Crew - General Clean up along road for
Trash and Tires.

Denton Road Continued



Denton Road near RR Tracks Removal of Metal Debris



RR Ties noted on Brown's GPS Survey

RR Ties are on Railroad Property and not part of trash removal



Railroad Border Side of Property

- Stumps line the northern side of property.
It appears that stumps were removed from utility line area and moved to tree line.
Not part of trash removal



Example of Trash along Ecorse Road



Examples of Trash on GM Service Drive Road



Entered Parcel C from GM Service Drive and Identified Most GPS Items 033 to 048



Leaves are covering trash and more items will be identified for removal



Parcel C - GPS Items from 038 to 049



Parcel C - GPS Items from 038 to 049



Found Six Perfect Circular Pits in GPS areas 048 and 049

Racer should investigate nature of pits

PER DISCUSSION WITH BOB, THIS SHOULD BE 047 AND 048. IW ILL CHAECK OUT THE AREA.



North and South Bound views of Bobcat Entry From Ecorse Road Parking



Bobcat route from Ecorse Road and entry point for GPS 038-048. This is directly across from GM Blue door



Entry point for items 038 to 049

