

**SOIL REMEDIATION AND
VERIFICATION SAMPLING RESULTS
LINDEN ROAD LANDFILL
PARCELS NO. 2 AND NO. 3
(FRONTAGE PROPERTY)
FLINT TOWNSHIP, MICHIGAN**

Prepared for

**GENERAL MOTORS CORPORATION
REMEDICATION TEAM**
Flint, Michigan

Prepared by

ROY F. WESTON, INC.
Three Hawthorn Parkway
Vernon Hills, Illinois 60061

May 1999

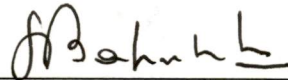
Work Order No. 01138-079-003

**SOIL REMEDIATION AND
VERIFICATION SAMPLING RESULTS
LINDEN ROAD LANDFILL
PARCELS NO. 2 AND NO. 3
(FRONTAGE PROPERTY)
FLINT TOWNSHIP, MICHIGAN**

Prepared for

GENERAL MOTORS CORPORATION
Flint, Michigan

May 1999



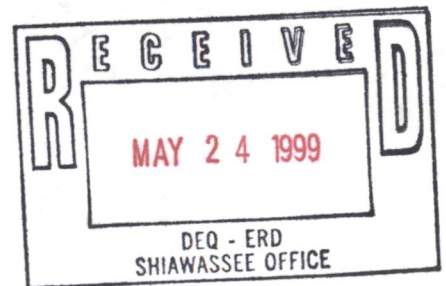
S. Babusukumar, P.G.
Project Manager



Scott D. Springer
Project Director

Prepared by

ROY F. WESTON, INC.
Three Hawthorn Parkway
Vernon Hills, Illinois 60061



Work Order No. 01138-079-003

TABLE OF CONTENTS

<u>Section</u>	<u>Title</u>	<u>Page</u>
ES	EXECUTIVE SUMMARY	ES-1
1	INTRODUCTION	1-1
2	SOIL EXCAVATION AND CONSOLIDATION	2-1
2.1	Area 1 – Excavation and Consolidation	2-2
2.2	Area 2 – Excavation and Consolidation	2-2
2.3	Area 3 – Excavation and Consolidation	2-2
2.4	Area 4 – Excavation and Consolidation	2-2
2.5	Area 5 – Excavation and Consolidation	2-3
3	VERIFICATION OF SOIL REMEDIATION SAMPLING AND ANALYTICAL RESULTS	3-1
3.1	Verification Sampling Approach	3-1
3.2	Area 1 – Analytical Results	3-2
3.3	Area 2 – Analytical Results	3-3
3.4	Area 3 – Analytical Results	3-3
3.5	Area 4 – Analytical Results	3-4
3.6	Area 5 – Analytical Results	3-4
3.7	Evaluation of Analytical Results	3-4
4	CONCLUSIONS	4-1

LIST OF FIGURES

<u>Figure</u>	<u>Title</u>	<u>Page</u>
1-1	Site Location Map	1-3
1-2	Parcels Identification Map	1-4
1-3	Soil Excavation Areas	1-5

LIST OF TABLES

<u>Table</u>	<u>Title</u>	<u>Page</u>
2-1	Summary of Soil/Fill Excavation Volumes	2-4
3-1	Area 1 – Analytical Results of Verification Sampling	3-6
3-2	Area 2 – Analytical Results of Verification Sampling	3-8
3-3	Area 3 – Analytical Results of Verification Sampling	3-10
3-4	Area 4 – Analytical Results of Verification Sampling	3-11
3-5	Area 5 – Analytical Results of Verification Sampling	3-12

LIST OF APPENDICES

Appendix

- A Analytical Results of Verification Sampling
- B Calculations of 95 Percent UCL for Residual Arsenic Concentrations within Parcels No. 2 and No. 3
- C Legal Descriptions of Parcels No. 2 and No. 3

EXECUTIVE SUMMARY

This report has been prepared on behalf of General Motors Corporation (GM) by Roy F. Weston, Inc. (WESTON) to document the soil remediation activities and present the results of verification sampling conducted recently within two parcels that constitute a 400-foot wide frontage zone at the Linden Road site located in Flint Township, Michigan (Figure 1-1). The purpose of this project was to remediate the two parcels to meet the Michigan Department of Environmental Quality (MDEQ) Part 201 Generic Commercial Sub-Category I criteria, which is equivalent to the Residential Direct Contact criteria, as indicated in the January 1996 Remedial Action Plan (RAP) and the December 1996 Addendum to the RAP for the Linden Road site.

Based on the findings of a detailed characterization study (WESTON, July 1997) of the surface and subsurface soils within the two parcels (Figure 1-2), five separate areas were identified as requiring soil remediation. The proposed remedial actions included the excavation of fill material from these five areas and consolidating these materials within the western portion of the Linden Road site, which was being capped, as proposed in the RAP. A sampling plan for the verification of soil remediation (WESTON, January 1998) was submitted to, and approved by, the MDEQ in February 1998.

The soil remediation and verification sampling was conducted in July and August of 1998. Approximately 38,600 cubic yards of soil/fill material from all five areas was excavated, transported, and consolidated with the materials in low areas within the western portion of the site during the capping process as proposed. Verification sampling of the excavation floors and sidewalls was conducted in conjunction with excavation activities. Sample analytical results were obtained on a 24-hour turnaround basis in order to facilitate making appropriate decisions regarding the extent of soil remediation at each of the areas. A total of 52 sidewall samples and 130 floor samples were collected and analyzed for specific parameters as defined in the sampling plan. Analytical parameters included arsenic, benzo (a) pyrene, and lead and were dependent on the areas remediated consistent with the sampling plan.

Post-remediation verification sampling results indicated that except for minor exceedences in arsenic concentrations, the residual constituent concentrations in the subsurface soil within the

two parcels remediated are below the MDEQ Generic Commercial Sub-Category I criteria which is equivalent to the Residential Direct Contact criteria. A calculation of average residual arsenic concentration using the analytical results of 149 subsurface samples from the two subject parcels indicates that the 95 percent Upper Confidence Limit (UCL) for residual arsenic is 6.2 mg/kg which is below the MDEQ Generic Commercial Sub-Category I criteria, which is equivalent to the Residential Direct Contact criteria.

Based upon data generated from the characterization study, soil remediation activities completed, and verification of remediation sampling conducted, the approximately 400-foot-wide frontage property consisting of two parcels within the Linden Road site has been remediated to meet the MDEQ Generic Commercial Sub-Category I criteria which is equivalent to the Residential Direct Contact criteria.

SECTION 1 INTRODUCTION

In April and May 1997, Roy F. Weston, Inc. (WESTON®) conducted a characterization study of subsurface material within a portion of the Linden Road site located in Flint Township, Michigan (Figure 1-1). The objective of this study was to evaluate soil quality of the approximate 400-foot wide frontage zone encompassed by two parcels (Parcels No. 2 and No. 3) within the site and along Linden Road to assist in evaluating the potential for remediating this area to meet the Michigan Department of Environmental Quality (MDEQ) Generic Commercial Sub-Category I criteria which is equivalent to the Residential Direct Contact criteria as indicated in the January 1996 Remedial Action Plan (RAP) and in the December 1996 Addendum to the RAP for the Linden Road site. A map identifying the above-referenced parcels is presented in Figure 1-2. Legal descriptions of Parcels No. 2 and No. 3 are presented in Appendix C.

Findings of the characterization study indicated that by removing soil associated with five selected areas it was feasible to clean up the approximate 400-foot wide Frontage area (hereafter referred to as Parcels No. 2 and No. 3) to meet the MDEQ Generic Commercial Sub-category I criteria which is equivalent to the Residential Direct Contact criteria. The results of the above-referenced study were submitted to the MDEQ in a report entitled "Findings of the subsurface Soil Sampling Investigation for Frontage Development, Linden Road Site, Genessee County, Michigan" dated July 1997. The areas requiring soil remediation to meet the Commercial Sub-Category I Direct Contact Criteria were included in Figure 5-2 of the above referenced report that is included in the current report as Figure 1-3. The above-referenced report also presented the proposed actions in the Parcels No. 2 and No. 3 which included the excavation of soils and waste material from the five areas requiring remediation, and consolidating these materials within the remainder of the site (Parcel No. 1) of the Linden Road site as proposed in the Remedial Action Plan.

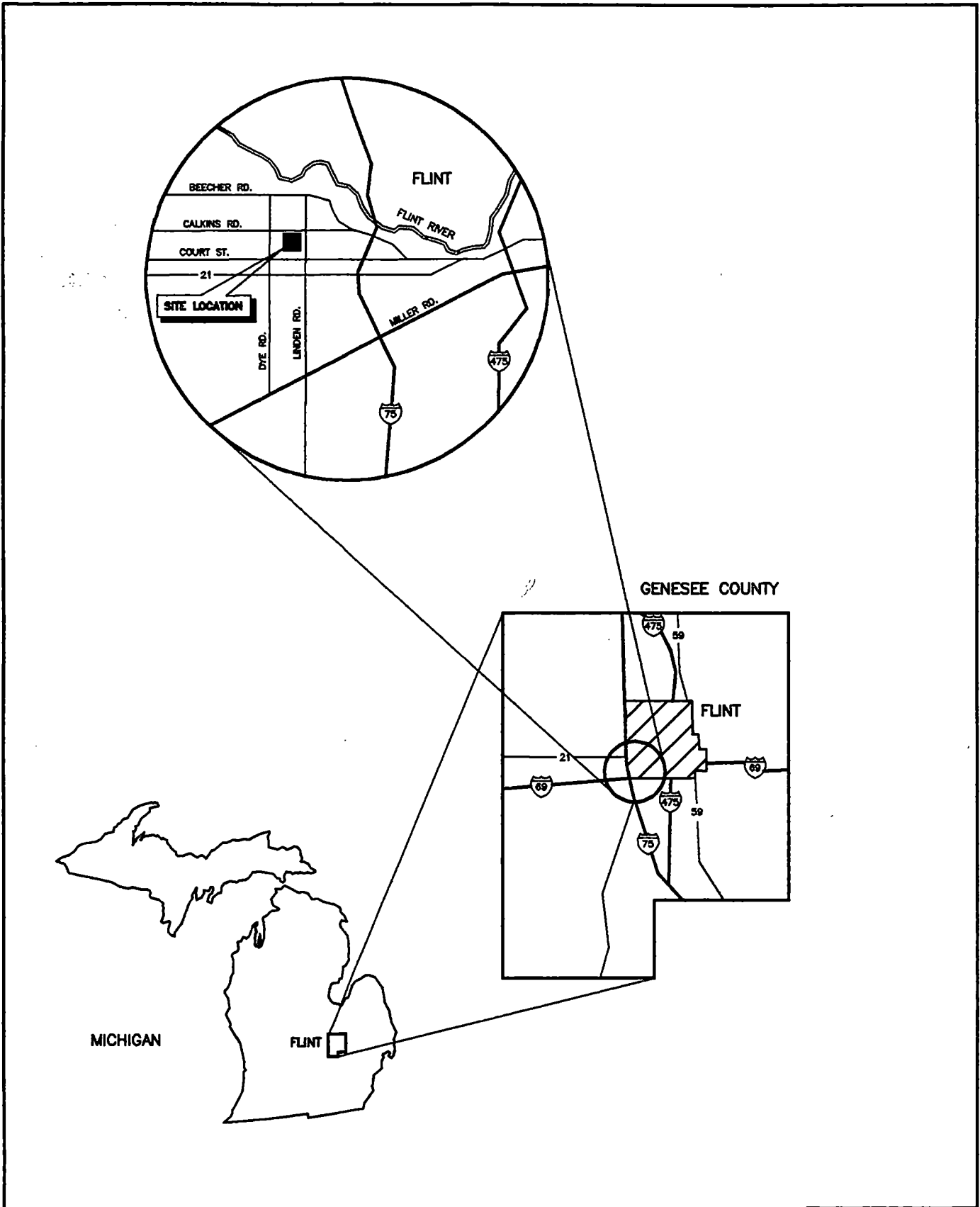
Subsequently, a sampling plan entitled "Sampling Plan for Verification of Soil Remediation, Linden Road Site Frontage Zone Soil Remediation, Flint Township, Michigan" was submitted to MDEQ in January 1998. This sampling plan was prepared in accordance with the MDEQ

Verification of Soil Remediation (VSR) guidance document dated April 1994. The MDEQ approved this sampling plan via a letter dated 10 February 1998 to GM.

The current report summarizes the waste consolidation and verification sampling activities associated with the five remediation areas within the Parcels No. 2 and No. 3 at the Linden Road site. Waste consolidation was conducted during July and August of 1998 by GM's contractor, Carl Bolander and Sons Co. of Shelby Township, Michigan. The excavated soil was consolidated with soil/fill material in the western portion of the site which is being capped, as proposed in the RAP. Verification sampling was conducted by WESTON during the waste consolidation activities. Verification samples were analyzed by Fire and Environmental Consulting Laboratory (FECL) of East Lansing, Michigan. All verification sampling activities were conducted in accordance with the MDEQ-approved sampling plan.

Results of the post-remediation verification sampling indicates that the subsurface soils within Parcels No. 2 and No. 3 have been cleaned up to meet the MDEQ Generic Commercial Subcategory I criteria which is equivalent to the Residential Direct Contact criteria pursuant to Part 201 of the State of Michigan Natural Resources and Environmental Protection Act, 1994 PA 451, as amended.

Section 2 presents details of soil excavation and consolidation activities related to each of the five areas. Section 3 presents the verification of soil remediation sampling procedures and presents the analytical results on an area-by-area basis. The summary and conclusions are presented in Section 4.



HERNANDD-05/10/99-12:09-J:\CAD\66891

FIGURE 1-1

WESTON MANAGERS DESIGNERS/CONSULTANTS
 Three Hawthorn Parkway
 Vernon Hills, Illinois
 60061

SITE LOCATION MAP
 LINDEN ROAD LANDFILL SITE
 Flint, Michigan

HERNAND-03/24/99-12:35-J:\CAD93\000\09299

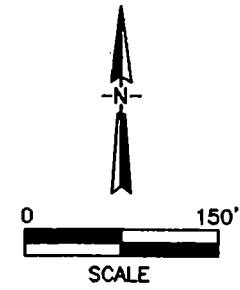
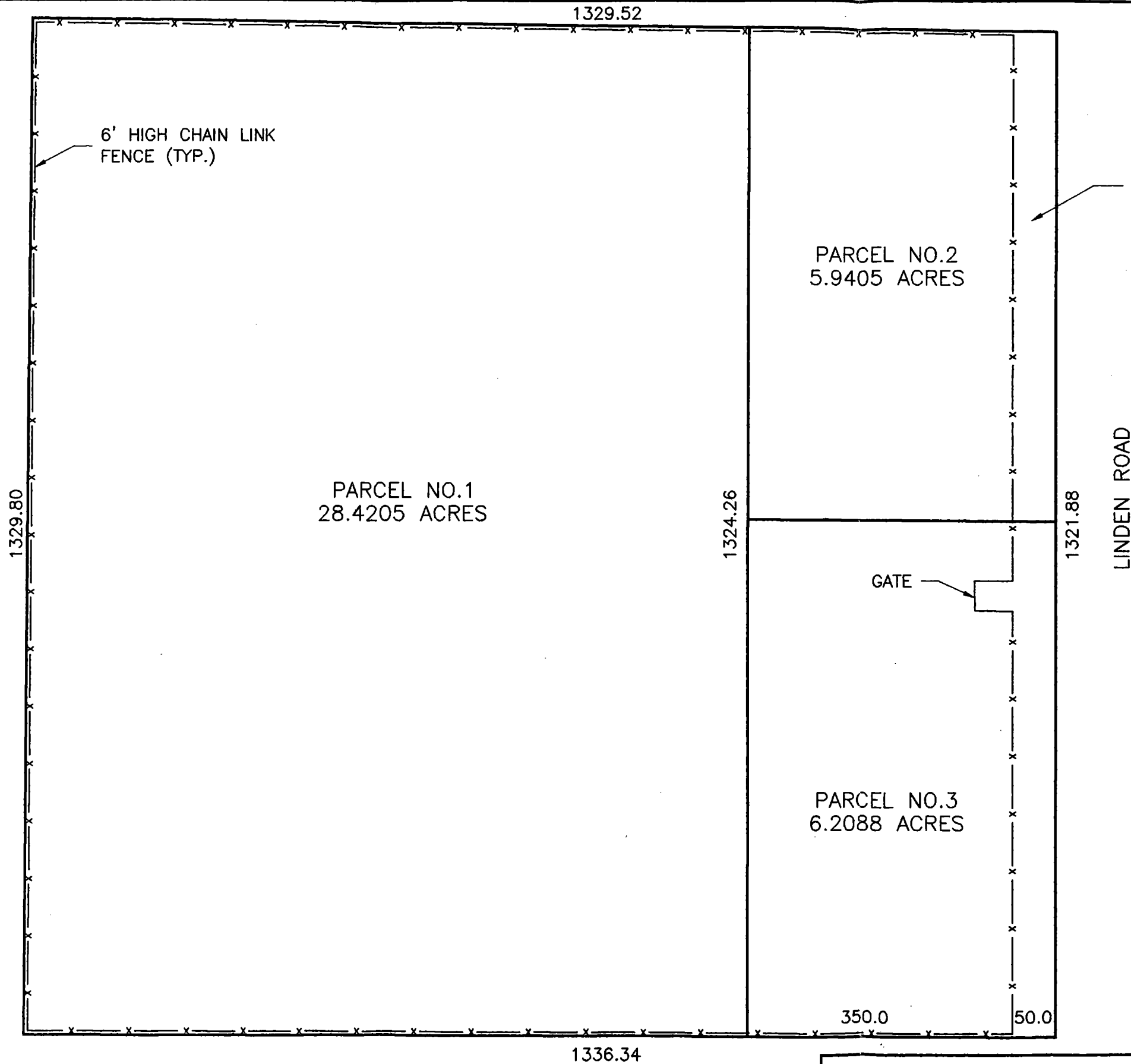


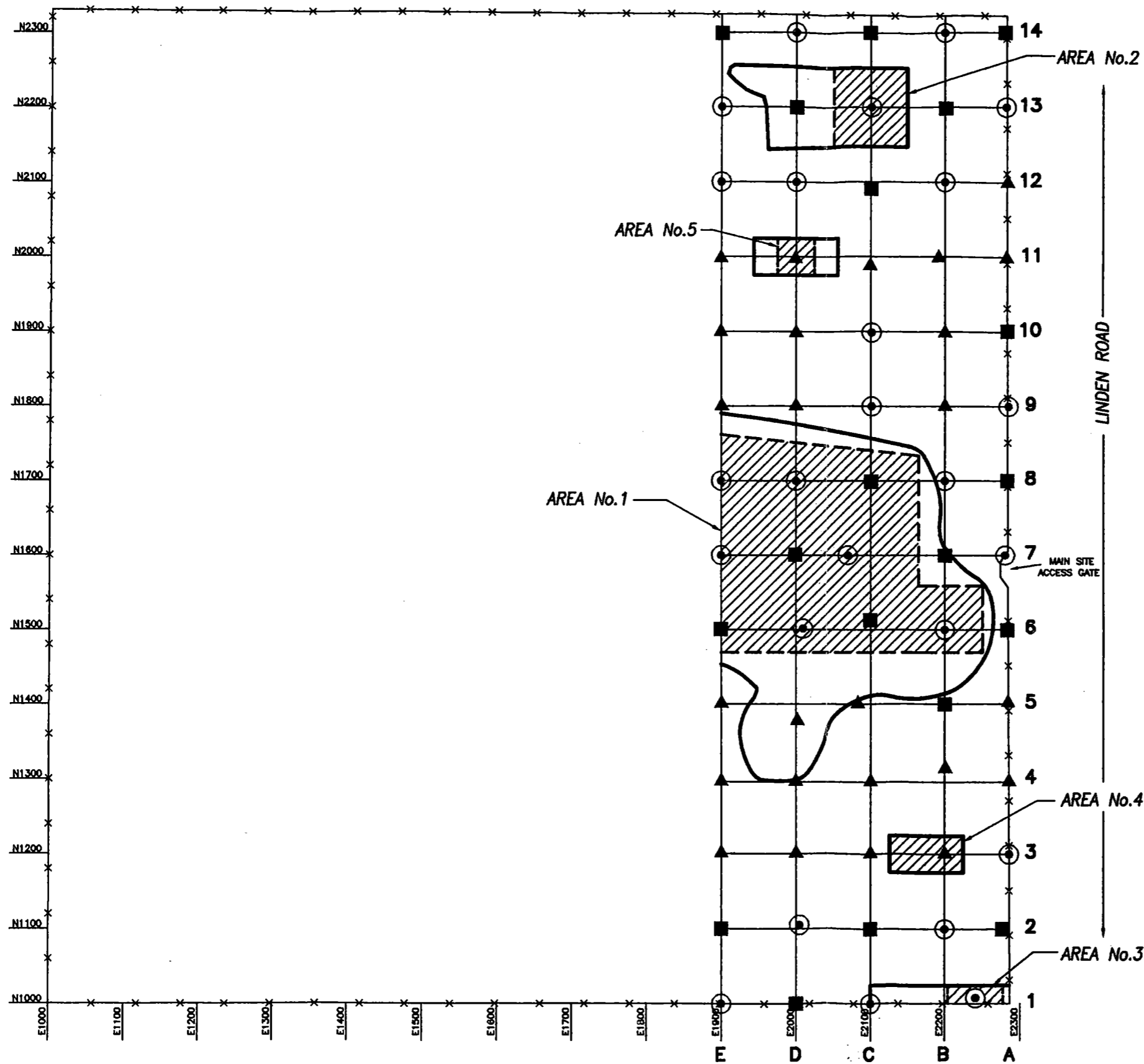
FIGURE 1-2

WESTON
MANAGERS DESIGNERS/CONSULTANTS

Three Hawthorn Parkway
Vernon Hills, Illinois
60061

PARCEL IDENTIFICATION MAP
LINDEN ROAD SITE
Flint Township, Michigan

HERNANDD-05/10/99-12:12-J:\CAD93\000\09097



LEGEND

- ⊙ SOIL BORING LOCATION
- AUGER PROBE LOCATION
- ▲ HAND AUGER LOCATION
- ▨ ORIGINALLY PROPOSED AREAS OF SOIL REMEDIATION
- APPROXIMATE BOUNDARIES OF AREAS REMEDIATED

FIGURE 1-3

WESTON Three Hawthorn Parkway
 MANAGERS DESIGNERS/CONSULTANTS Vernon Hills, Illinois
 60061

SOIL REMEDIATION AREAS
 LINDEN ROAD LANDFILL SITE
 Flint, Michigan

SECTION 2

SOIL EXCAVATION AND CONSOLIDATION

Soil was excavated from each of the five remediation areas (Figure 1-2) within Parcels No. 2 and No. 3 using a bucket excavator (back hoe). The depths of excavations in the five areas were consistent with those proposed in the Soil Remediation Verification Sampling Plan. The areal extent of the excavations, however, were increased from the proposed excavation areas based on field observations of subsurface material as well as analytical results. The excavated soil was loaded into trucks, hauled, and placed within Parcel No. 1 at various locations that were at least 50 feet from the western boundaries of Parcels No. 2 and No. 3. The soil was spread using a bulldozer and then proof-rolled to ensure adequate compaction. Air monitoring was conducted during waste consolidation activities using an organic vapor meter (OVM) and a combustible gas indicator (CGI). Monitoring of particulate matter was conducted using a Miniram Aerosol Monitor. Throughout waste consolidation activities a Euclid TS-14 Water Truck was employed for dust suppression.

Upon excavation and removal of the initial volumes of soil as specified in the Sampling Plan, the excavations were temporarily fenced using caution flagging while samples were being collected and analyzed. Analytical results were compared to MDEQ Generic Commercial Sub-Category I Criteria as discussed in Section 3 of this report. Once the limits of the excavation were determined to be clean based on verification samples, the excavation was then backfilled with clean fill material and a four-inch layer of topsoil. As indicated in the Sampling Plan, additional volumes of soil were excavated and further verification sampling was performed when initial sampling results indicated exceedances of the MDEQ Generic Commercial Sub-Category I Direct Contact criteria. All fill material was analyzed for Target Analyte List/Target Compound List (TAL/TCL) constituents prior to being imported to the site. The approximate volumes of soil removed from each area are summarized in Table 2-1.

The following subsections present brief descriptions of the soil excavation and consolidation activities associated with each area.

2.1 AREA 1 - SOIL EXCAVATION AND CONSOLIDATION

Approximately 32,650 cubic yards of soil/fill material was removed from Area 1 (Figure 1-3). The soil/fill material in Area 1 included debris consisting of tires, wood blocks, metal scraps, and glass mixed into the soil. Debris was placed in low areas of the west property (Parcel No. 1) that required a thick layer of clean fill material during the cover process, thus eliminating the potential for debris to effect the integrity of the final protective cover.

2.2 AREA 2 – SOIL EXCAVATION AND CONSOLIDATION

Approximately 4,200 cubic yards of soil/fill material was excavated from Area 2 (Figure 1-3). The waste material in Area 2 consisted primarily of black fine sandy material. In the northwest corner of the excavation, concentrations of debris including metal scraps and glass were observed and removed. The excavation was extended westward in this area to the west property line of Parcel No. 3.

2.3 AREA 3 – SOIL EXCAVATION AND CONSOLIDATION

Approximately 400 cubic yards of soil/fill was excavated from Area 3 (Figure 1-3). The soil/fill material was composed primarily of fine black sandy material. The soil/fill layer was underlain by a layer of gray clay.

2.4 AREA 4 – SOIL EXCAVATION AND CONSOLIDATION

Approximately 500 cubic yards of soil/fill material was excavated from Area 4 (Figure 1-3). The excavated material was composed of primarily fine black sandy material that ranged from approximately 2.0 to 3.5 feet in thickness which was underlain by a uniform gray clay.

2.5 AREA 5 – SOIL EXCAVATION AND CONSOLIDATION

Approximately 850 cubic yards of waste material were excavated from Area 5 (Figure 1-3). The excavated material was composed of primarily fine sandy fill material. A small quantity of debris including metal scraps and glass were observed outside of the original excavation limits in the westward direction. This material was also removed and hauled to the west property for consolidation.

Table 2-1

**Summary of Soil/Fill Excavation Volumes
Linden Road Site
Soil Remediation (Parcels No. 2 and No. 3)**

Location	Approximate Volumes of Excavated Soil (cubic yards)
Area 1	32,650
Area 2	4,200
Area 3	400
Area 4	500
Area 5	850
TOTAL	38,600

SECTION 3
VERIFICATION OF SOIL REMEDIATION SAMPLING
AND ANALYTICAL RESULTS

3.1 VERIFICATION SAMPLING APPROACH

Following initial excavation of soil/fill material in each of the five remediation areas, verification sampling was conducted to determine the extent of impacted soil (if any) remaining in the excavations. Samples were submitted on a 24-hour turnaround to the laboratory in order to continue excavation activities without delays. Samples were collected from the floor and side-walls (when present) in accordance with the MDEQ VSR guidance document as specified in the Sampling Plan. Once results were received, a decision was made based on the analytical results to either continue excavation or begin backfilling activities. Once the limits of the excavation were determined clean based on verification sample results, the excavation was backfilled with clean fill material including a 4-inch-thick layer of clean topsoil.

The number and locations of samples collected were based on the dimensions of the excavations as specified in the MDEQ VSR guidance document, and were greater in number than those presented in the Sampling Plan. Sidewalls were not present at every location due to the nature of the topography or when piles of soil were sampled such as in Area 5.

Based on the actual dimensions of the excavations performed at the site, Areas 1 and 2, which were each greater than 0.25 acre in area, were classified as medium sites. For medium sites a grid was employed to facilitate the unbiased selection of sampling points. A grid interval (GI) of approximately 40 feet was employed for Area 1 and a GI of approximately 20 feet for Area 2. Grid intervals were established using the medium site equation $(GI = (A/\pi)^{1/2} / 4)$ recommended in the MDEQ VSR guidance document. The following number of samples were collected for analysis from the medium sites :

<u>Location</u>	<u>No. of Sidewall Samples</u>	<u>No. of Floor Samples</u>
Area 1	15	62
Area 2	19	44

Areas 3, 4, and 5, which were less than 0.25 acre in area, were classified as small sites. Based on Tables 1 and 2 of the VSR, the following number of samples were collected for analysis from these areas:

<u>Location</u>	<u>No. of Sidewall Samples</u>	<u>No. of Floor Samples</u>
Area 3	11	11
Area 4	7	7
Area 5	0	6

Each sample was collected as a discrete sample using a clean stainless steel scoop, placed in a 4-oz glass jar and immediately sealed. Samples were collected within 6 inches of the ground surface and designated with unique sample identification numbers. Surgical gloves were changed between each sample location to ensure that no cross contamination of samples occurred. After collection, samples were placed on ice in a cooler. Samples were picked up at the site by FECL laboratory personnel on the day of collection and analyzed within a 24-hour turnaround time. Sample information, including identification number, time, date were recorded on a chain of custody and field logbook as appropriate. Sample analytical results are discussed in the following subsections.

The selection of analytical parameters for verification samples from each area were based on the findings of the April/May characterization study and as proposed in the MDEQ-approved verification of soil remediation sampling plans (WESTON, January 1998).

3.2 AREA 1 – ANALYTICAL RESULTS

The analytical results of samples collected from Area 1 are summarized in Table 3-1. A total of 77 samples from Area 1 were analyzed for arsenic, lead, and benzo(a)pyrene. Most of the southern and northern edges of the excavation were excavated to the surrounding grade and did

not have sidewalls. The west edge of the excavation extended into the western property boundary and therefore did not require sidewall sampling. Analytical results of verification samples were compared to the MDEQ Generic Sub-Category I Direct Contact Criteria for arsenic, lead and benzo (a) pyrene of 6.6 mg/kg, 400mg/kg and 1.0 mg/kg, respectively. Benzo(a)pyrene was not detected in any of the samples. Lead concentrations were all below the MDEQ criteria, with the highest concentration at 139 mg/kg. Eighty percent of the samples contained lead concentrations less than 10 mg/kg. Arsenic concentrations ranged from 0.87 mg/kg to 9.96 mg/kg except in a single sample (LR-A1-D4) in which the arsenic concentration was detected at 18.0 mg/kg. Arsenic concentrations in 21 of the 77 samples analyzed exceeded the MDEQ criteria of 6.6 mg/kg. In the majority of these 21 samples, the arsenic concentrations were below 10 mg/kg.

3.3 AREA 2 – ANALYTICAL RESULTS

After the initial excavation, a total of 63 verification samples were collected and analyzed for benzo(a)pyrene from Area 2. The analytical results of the verification samples (Table 3-2) were compared to the MDEQ Generic Sub-Category I Criteria for benzo(a)pyrene of 1.4 mg/kg. Analytical results of verification samples indicated only a single detection of benzo(a)pyrene at 3.5 mg/kg in one sidewall sample (LR-A2-A5S). Excavation was continued laterally approximately 5 feet in each direction of the impacted sample location and a second sample was collected. Benzo(a)pyrene was not detected in the second verification sample (LR-A2-A5Sa) (Table 3-2).

3.4 AREA 3 – ANALYTICAL RESULTS

A total of 22 verification samples were collected and analyzed for arsenic. Analytical results of Area 3 verification sampling are provided in Table 3-3. Arsenic concentrations from 0.63 mg/kg to 26.8 mg/kg with concentrations in nine samples exceeding the MDEQ criteria of 6.6 mg/kg.

3.5 AREA 4 – ANALYTICAL RESULTS

A total of 14 verification samples were collected initially and analyzed for arsenic. Analytical results of Area 4 verification sampling are provided in Table 3-4. Two of the samples LR-A4-08 and LR-A4-11 contained arsenic at concentrations of 13.4 mg/kg and 7.98 mg/kg, respectively, exceeding the MDEQ criteria and two verification samples collected at these locations after further excavations indicated arsenic concentrations of 3.0 mg/kg and 7.75 mg/kg, respectively.

3.6 AREA 5 – ANALYTICAL RESULTS

Following removal of the waste material, six verification samples were collected and analyzed for arsenic. The soil/fill in this area were present in piles, therefore, the excavation had no sidewalls and did not require sidewall sampling. Analytical results of Area 5 verification sampling are provided in Table 3-5. Arsenic concentrations ranged from 4.26 mg/kg to 12.4 mg/kg with four samples exceeding MDEQ criteria of 6.6 mg/kg.

3.7 EVALUATION OF ANALYTICAL RESULTS

The verification of soil remediation sampling results indicated that with the exception of arsenic all the constituents analyzed for were either not detected or were below the Commercial Subcategory I criteria which is equivalent to the Residential Direct Contact criteria. Arsenic concentrations exceeded the above-referenced criteria of 6.6 mg/kg in selected samples in Area 1, Area 3, Area 4, and Area 5. It should be noted that arsenic occurs naturally in soils and the presence of arsenic at the levels detected may represent typical background concentrations in the areas sampled.

In order to calculate the average residual arsenic concentrations within Parcels No. 2 and No. 3, WESTON compiled all the data for arsenic from the previous investigation (WESTON, July 1997) and the data from the current verification of soil remediation sampling. Then, all arsenic data associated with the areas remediated were eliminated. The remaining database represented the residual concentrations of arsenic in Parcels No. 2 and No. 3. This database included a total

of 149 sample analytical results for arsenic. The values in this database were used to calculate the average arsenic concentration of 6.2 mg/kg. This average arsenic concentration is below the MDEQ Sub-Category I (Residential) Direct Contact Criteria of 6.6 mg/kg.

The average arsenic concentration was derived by calculating the 95 percent upper confidence level (UCL) on the arithmetic mean. The 95 percent UCL on the arithmetic mean was calculated following the U.S. EPA (1992) guidance. The data was assumed to be lognormally distributed, as typically anticipated for environmental data (U.S. EPA, 1992). The calculations and the data used for the derivation of the UCL for arsenic are presented in Appendix B.

Table 3-1

**Area 1 - Analytical Results of Verification Sampling
Linden Road Site Parcels No. 2 and No. 3 Soil Remediation
July/August 1998
(mg/kg)**

Sample ID	Arsenic	Lead	Benzo(a)pyrene
LR-A1-B3	7.14	8.5	ND
LR-A1-B4	9.96	10.3	ND
LR-A1-C3	9.86	11.4	ND
LR-A1-C4	2.24	3.3	ND
LR-A1-C5	10.6	8.5	ND
LR-A1-D2	11.3	9.6	ND
LR-A1-D3	9.69	9.8	ND
LR-A1-D4	18.0	8.5	ND
LR-A1-D5	11.7	7.5	ND
LR-A1-D6	6.4	6.9	ND
LR-A1-D7	6.17	7.0	ND
LR-A1-E2	8.83	6.4	ND
LR-A1-E3	6.29	7.7	ND
LR-A1-E4	4.87	6.0	ND
LR-A1-E5	6.8	8.0	ND
LR-A1-E6	6.9	14.8	ND
LR-A1-E7	16.6	8.8	ND
LR-A1-E8	6.35	15.1	ND
LR-A1-E9	8.67	10.4	ND
LR-A1-F2	8.09	9.8	ND
LR-A1-F3	4.64	6.2	ND
LR-A1-F4	3.55	7.3	ND
LR-A1-F5	3.51	6.2	ND
LR-A1-F6	5.84	7.1	ND
LR-A1-F7	4.03	19.3	ND
LR-A1-F8	2.74	7.3	ND
LR-A1-F9	1.86	4.5	ND
LR-A1-G2	4.74	5.3	ND
LR-A1-G3	6.96	7.2	ND
LR-A1-G4	5.11	5.7	ND
LR-A1-G5	4.57	6.1	ND
LR-A1-G6	6.2	6.2	ND
LR-A1-G7	5.29	5.5	ND
LR-A1-G8	3.87	9.4	ND
LR-A1-G9	4.64	16.0	ND
LR-A1-H2	4.93	27.1	ND
LR-A1-H3	5.55	5.8	ND
LR-A1-H4	5.53	5.5	ND
LR-A1-H5	4.12	5.7	ND
LR-A1-H6	4.23	11.2	ND

MDEQ Commercial Sub-Category I Direct Contact Criteria : As = 6.6 mg/kg, Pb = 400 mg/kg, benzo(a)pyrene = 1.4 mg/kg

Table 3-1

**Area 1 - Analytical Results of Verification Sampling
Linden Road Site Parcels No. 2 and No. 3 Soil Remediation
July/August 1998
(mg/kg)
(Continued)**

Sample ID	Arsenic	Lead	Benzo(a)pyrene
LR-A1-H7	3.94	8.8	ND
LR-A1-H8	1.59	9.5	ND
LR-A1-H9	3.92	5.4	ND
LR-A1-I2	8.87	6.3	ND
LR-A1-I3	5.87	13.4	ND
LR-A1-I4	7.77	7.0	ND
LR-A1-I5	6.09	6.5	ND
LR-A1-I6	5.89	5.8	ND
LR-A1-I7	5.0	5.7	ND
LR-A1-J2	6.09	24.1	ND
LR-A1-J3	8.17	7.2	ND
LR-A1-J4	5.78	8.6	ND
LR-A1-J5	4.05	5.7	ND
LR-A1-J6	3.37	6.4	ND
LR-A1-J7	3.76	7.0	ND
LR-A1-K2	3.54	7.3	ND
LR-A1-K3	3.62	6.3	ND
LR-A1-K4	4.15	6.0	ND
LR-A1-K5	4.55	19.8	ND
LR-A1-K6	3.67	8.5	ND
LR-A1-K7	3.78	6.1	ND
LR-A1-L2	3.3	6.0	ND
LR-A1-L3	5.25	12.4	ND
LR-A1-L4	1.06	7.9	ND
LR-A1-SW1	7.83	8.7	ND
LR-A1-SW2	3.64	6.8	ND
LR-A1-SW3	6.16	6.3	ND
LR-A1-SW4	10.8	35.7	ND
LR-A1-SW5	8.45	6.5	ND
LR-A1-SW6	0.87	9.9	ND
LR-A1-SW7	3.31	139	ND
LR-A1-SW8	1.59	18.3	ND
LR-A1-SW9	1.83	10.71	ND
LR-A1-SW10	1.7	40.2	ND
LR-A1-SW11	1.52	6.3	ND
LR-A1-SW12	3.57	58.5	ND
LR-A1-SW13	1.62	7.2	ND

MDEQ Commercial Sub-Category I Direct Contact Criteria : As = 6.6 mg/kg, Pb = 400 mg/kg, benzo(a)pyrene = 1.4 mg/kg

Table 3-2

**Area 2 Analytical results of Verification Sampling
Linden Road Site Parcels No. 2 and No. 3 Soil Remediation
July/August 1998
(mg/kg)**

Sample ID	Benzo (a) pyrene
LR-A2-A2S	ND
LR-A2-A3S	ND
LR-A2-A4S	ND
LR-A2-A5S	3.5
LR-A2-A5Sa	ND
LR-A2-A6S	ND
LR-A2-A7S	ND
LR-A2-A8S	ND
LR-A2-A9S	ND
LR-A2-A10S	ND
LR-A2-B1S	ND
LR-A2-B2F	ND
LR-A2-B3F	ND
LR-A2-B4F	ND
LR-A2-B5F	ND
LR-A2-B6F	ND
LR-A2-B7F	ND
LR-A2-B8F	ND
LR-A2-B9F	ND
LR-A2-B10F	ND
LR-A2-B11S	ND
LR-A2-C1S	ND
LR-A2-C2F	ND
LR-A2-C3F	ND
LR-A2-C4F	ND
LR-A2-C5F	ND
LR-A2-C6F	ND
LR-A2-C7F	ND
LR-A2-C8F	ND
LR-A2-C9F	ND
LR-A2-C10F	ND
LR-A2-C11S	ND
LR-A2-D1S	ND
LR-A2-D2F	ND
LR-A2-D3F	ND
LR-A2-D4F	ND
LR-A2-D5F	ND
LR-A2-D6F	ND
LR-A2-D7F	ND
LR-A2-D8F	ND

MDEQ Commercial Sub-Category I Direct Contact Criteria for benzo(a)pyrene = 1.4 mg/kg).

Table 3-2

Area 2 Analytical results of Verification Sampling
Linden Road Site Parcels No. 2 and No. 3 Soil Remediation
July/August 1998
(mg/kg)
(Continued)

Sample ID	Benzo (a) pyrene
LR-A2-D9F	ND
LR-A2-D10F	ND
LR-A2-D11S	ND
LR-A2-E1S	ND
LR-A2-E2F	ND
LR-A2-E3F	ND
LR-A2-E4F	ND
LR-A2-E5F	ND
LR-A2-E6F	ND
LR-A2-E7F	ND
LR-A2-E8F	ND
LR-A2-E9F	ND
LR-A2-E10F	ND
LR-A2-E11S	ND
LR-A2-F2S	ND
LR-A2-F3S	ND
LR-A2-F4S	ND
LR-A2-F5S	ND
LR-A2-F6S	ND
LR-A2-F7S	ND
LR-A2-F8S	ND
LR-A2-F9S	ND
LR-A2-F10S	ND

MDEQ Commercial Sub-Category I Direct Contact Criteria for benzo(a)pyrene = 1.4 mg/kg).

Table 3-3

**Area 3 - Analytical Results of Verification Sampling
Linden Road Site Parcels No. 2 and No. 3 Soil Remediation
July/August 1998
(mg/kg)**

Sample ID	Arsenic
LR-A3-01	5.45
LR-A3-02	0.63
LR-A3-03	0.65
LR-A3-04	1.47
LR-A3-05	2.13
LR-A3-06	7.19
LR-A3-06a	12.6
LR-A3-07	4.10
LR-A3-08	9.73
LR-A3-08a	26.8
LR-A3-09	4.22
LR-A3-10	12.3
LR-A3-10a	17.4
LR-A3-11	0.79
LR-A3-12	4.68
LR-A3-13	9.82
LR-A3-13a	9.01
LR-A3-14	21.6
LR-A3-14a	7.09
LR-A3-10-3	4.07
LR-A3-08-3	2.82
LR-A3-14-2	1.93

MDEQ Commerical Sub-Category I Direct Contact Criteria for Arsenic = 6.6 mg/kg.

Table 3-4

**Area 4 - Analytical Results of Verification Sampling
Linden Road Site Parcels No. 2 and No. 3 Soil Remediation
July/August 1998
(mg/kg)**

Sample ID	Arsenic
LR-A4-01	0.84
LR-A4-02	4.17
LR-A4-03	0.99
LR-A4-04	2.7
LR-A4-05	2.8
LR-A4-06	1.08
LR-A4-07	2.03
LR-A4-08	13.4
LR-A4-08a	3.00
LR-A4-09	1.94
LR-A4-10	1.81
LR-A4-11	7.98
LR-A4-11a	7.75
LR-A4-12	1.33

MDEQ Commercial Sub-Category I Direct Contact Criteria for Arsenic = 6.6 mg/kg

Table 3-5

**Area 5 - Analytical Results of Verification Sampling
Linden Road Site Parcels No. 2 and No. 3 Soil Remediation
July/August 1998
(mg/kg)**

Sample ID	Arsenic
LR-A5-01F	10.5
LR-A5-02F	4.26
LR-A5-03F	5.72
LR-A5-04F	7.74
LR-A5-05F	12.4
LR-A5-06F	9.29

MDEQ Commerical Sub-Category I Direct Contact Criteria for Arsenic = 6.6 mg/kg.

SECTION 4

SUMMARY AND CONCLUSIONS

During July and August 1998, WESTON, on behalf of GM, conducted soil remediation and verification sampling in five separate areas within the Linden Road site Parcels No. 2 and No. 3. The verification sampling was performed in conjunction with soil/fill excavation and consolidation activities at the site. All sampling activities were performed in accordance with the requirements of an MDEQ-approved sampling plan for this project. The objective of the soil remediation was to clean up the two above-referenced parcels comprising the frontage property to meet the MDEQ Commercial Sub-Category I criteria which is equivalent to the Residential Direct Contact criteria.

Based upon the subsurface soil sampling investigation conducted in April and May 1998 (WESTON, July 1997), the remediation of soils from five areas, and the soil remediation verification sampling conducted in July and August 1998, the following conclusions are made:

- Except for minor exceedances in arsenic concentrations, analytical results indicate that residual constituent concentrations in the subsurface soil within Parcels No. 1 and No. 2 are below the MDEQ Generic Commercial Sub-Category I criteria which is equivalent to the Residential Direct Contact criteria.
- A calculation of average residual arsenic concentration using results of 149 subsurface soil samples collected from Parcels No. 2 and No. 3 indicates that the 95 percent UCL for residual arsenic is 6.2 mg/kg which is below the MDEQ Generic Commercial Sub-Category I criteria which is equivalent to the Residential Direct Contact criteria.
- The approximately 400-foot-wide frontage property (Parcels No. 2 and No. 3) within the Linden Road site has been remediated to meet the MDEQ Generic Commercial Sub-Category I criteria which is equivalent to the Residential Direct Contact criteria.

APPENDIX A

ANALYTICAL RESULTS OF VERIFICATION SAMPLING



Fire & Environmental Consulting Laboratories, Inc.

One East Complex 1451 East Lansing Drive, Suite 222 East Lansing, MI 48823
Phone (517) 332-0167 Fax (517) 332-6333

July 17, 1998

Attention: Mr. Jack Gallagher

Weston
3 Hawthorn PKY. Suite 400
Vernon Hills, IL 60061

Analytical Laboratory Report

FECL #(s): AA62503-AA62510

Project: Weston

Samples collected by: J. GALLAGHER

Date/Time Submitted: 07/16/98 15:14

PO #: Verbal

FECL #: AA62503

Tag: LR-A1-B3

Date/Time Collected: 07/15/98 14:15

Matrix: Soil

Container(s): 1-4oz Glass

Preservation: Refrigeration/None

FECL #: AA62504

Tag: LR-A1-B4

Date/Time Collected: 07/15/98 14:20

Matrix: Soil

Container(s): 1-4oz Glass

Preservation: Refrigeration/None

FECL #: AA62505

Tag: LR-A1-C3

Date/Time Collected: 07/15/98 14:30

Matrix: Soil

Container(s): 1-4oz Glass

Preservation: Refrigeration/None



Analytical Laboratory Report
Weston
July 17, 1998

FECL #: AA62506
Tag: LR-A1-C4
Date/Time Collected: 07/15/98 14:40
Matrix: Soil
Container(s): 1-4oz Glass
Preservation: Refrigeration/None

FECL #: AA62507
Tag: LR-A1-C5
Date/Time Collected: 07/15/98 14:50
Matrix: Soil
Container(s): 1-4oz Glass
Preservation: Refrigeration/None

FECL #: AA62508
Tag: LR-A2-Da
Date/Time Collected: 07/15/98 14:55
Matrix: Soil
Container(s): 1-4oz Glass
Preservation: Refrigeration/None

FECL #: AA62509
Tag: LR-A2-Ea
Date/Time Collected: 07/15/98 15:10
Matrix: Soil
Container(s): 1-4oz Glass
Preservation: Refrigeration/None

FECL #: AA62510
Tag: LR-A2-Fa
Date/Time Collected: 07/15/98 15:15
Matrix: Soil
Container(s): 1-4oz Glass
Preservation: Refrigeration/None



Analytical Laboratory Report

Weston

July 17, 1998

FECL #: AA62503

Tag: LR-A1-B3

Date/Time Collected: 07/15/98 14:15

Matrix: Soil

Analysis	Results	Units	MDL	Method	Analyst	Date Run
<i>Metals</i>						
Arsenic	7.14	mg/kg	0.50	6020	P R	07/16/98
Lead	8.5	mg/kg	1.0	6020	P R	07/16/98
<i>Organics</i>						
Benzo(a)pyrene	Not detected	mg/kg	0.33	8270	JB	07/17/98
PNA Extraction	Completed				JKB	07/16/98

FECL #: AA62504

Tag: LR-A1-B4

Date/Time Collected: 07/15/98 14:20

Matrix: Soil

Analysis	Results	Units	MDL	Method	Analyst	Date Run
<i>Metals</i>						
Arsenic	9.96	mg/kg	0.50	6020	P R	07/16/98
Lead	10.3	mg/kg	1.0	6020	P R	07/16/98
<i>Organics</i>						
Benzo(a)pyrene	Not detected	mg/kg	0.33	8270	JB	07/17/98
PNA Extraction	Completed				JKB	07/16/98

FECL #: AA62505

Tag: LR-A1-C3

Date/Time Collected: 07/15/98 14:30

Matrix: Soil

Analysis	Results	Units	MDL	Method	Analyst	Date Run
<i>Metals</i>						
Arsenic	9.86	mg/kg	0.50	6020	P R	07/16/98
Lead	11.4	mg/kg	1.0	6020	P R	07/16/98



Analytical Laboratory Report
Weston
July 17, 1998

FECL #: AA62505 (Continued)
Tag: LR-A1-C3
Date/Time Collected: 07/15/98 14:30
Matrix: Soil

Analysis	Results	Units	MDL	Method	Analyst	Date Run
<i>Organics</i>						
Benzo(a)pyrene	Not detected	mg/kg	0.33	8270	JB	07/17/98
PNA Extraction	Completed				JKB	07/16/98

FECL #: AA62506
Tag: LR-A1-C4
Date/Time Collected: 07/15/98 14:40
Matrix: Soil

Analysis	Results	Units	MDL	Method	Analyst	Date Run
<i>Metals</i>						
Arsenic	2.24	mg/kg	0.50	6020	P R	07/16/98
Lead	3.3	mg/kg	1.0	6020	P R	07/16/98
<i>Organics</i>						
Benzo(a)pyrene	Not detected	mg/kg	0.33	8270	JB	07/17/98
PNA Extraction	Completed				JKB	07/16/98

FECL #: AA62507
Tag: LR-A1-C5
Date/Time Collected: 07/15/98 14:50
Matrix: Soil

Analysis	Results	Units	MDL	Method	Analyst	Date Run
<i>Metals</i>						
Arsenic	10.6	mg/kg	0.50	6020	P R	07/16/98
Lead	8.5	mg/kg	1.0	6020	P R	07/16/98
<i>Organics</i>						
Benzo(a)pyrene	Not detected	mg/kg	0.33	8270	JB	07/17/98
PNA Extraction	Completed				JKB	07/16/98



Analytical Laboratory Report
 Weston
 July 17, 1998

FECL #: AA62508
Tag: LR-A2-Da
Date/Time Collected: 07/15/98 14:55
Matrix: Soil

Analysis	Results	Units	MDL	Method	Analyst	Date Run
Metals						
Arsenic	1.07	mg/kg	0.50	6020	P R	07/16/98
Lead	6.1	mg/kg	1.0	6020	P R	07/16/98
Organics						
Benzo(a)pyrene	Not detected	mg/kg	0.33	8270	JB	07/17/98
PNA Extraction	Completed				JKB	07/16/98

FECL #: AA62509
Tag: LR-A2-Ea
Date/Time Collected: 07/15/98 15:10
Matrix: Soil

Analysis	Results	Units	MDL	Method	Analyst	Date Run
Metals						
Arsenic	4.20	mg/kg	0.50	6020	P R	07/16/98
Lead	9.1	mg/kg	1.0	6020	P R	07/16/98
Organics						
Benzo(a)pyrene	Not detected	mg/kg	0.33	8270	JB	07/17/98
PNA Extraction	Completed				JKB	07/16/98

FECL #: AA62510
Tag: LR-A2-Fa
Date/Time Collected: 07/15/98 15:15
Matrix: Soil

Analysis	Results	Units	MDL	Method	Analyst	Date Run
Metals						
Arsenic	1.42	mg/kg	0.50	6020	P R	07/16/98
Lead	3.3	mg/kg	1.0	6020	P R	07/16/98



Analytical Laboratory Report
Weston
July 17, 1998

FECL #: AA62510 (Continued)
Tag: LR-A2-Fa
Date/Time Collected: 07/15/98 15:15
Matrix: Soil

Analysis	Results	Units	MDL	Method	Analyst	Date Run
<i>Organics</i>						
Benzo(a)pyrene	Not detected	mg/kg	0.33	8270	JB	07/17/98
PNA Extraction	Completed				JKB	07/16/98

Note: Methods may be modified for improved performance.
Results reported on a dry weight basis, where applicable.
Results relate only to items tested.
Report shall not be reproduced except in full, without the written approval of FECL.

Violetta F. Murshak

Violetta F. Murshak
Laboratory Director



Fire & Environmental Consulting Laboratories, Inc.

One East Complex 1451 East Lansing Drive, Suite 222 East Lansing, MI 48823
Phone (517) 332-0167 Fax (517) 332-6333

July 17, 1998

Attention: Mr. Jack Gallagher

Weston
3 Hawthron PKY. Suite 400
Vernon Hills, IL 60061

Analytical Laboratory Report

FECL #(s): AA62511-AA62516

Project: Weston
Samples collected by: J. GALLAGHER
Date/Time Submitted: 07/16/98 15:14
PO #: Verbal

FECL #: AA62511
Tag: LR-A1-D2
Date/Time Collected: 07/16/98 11:10
Matrix: Soil
Container(s): 1-4oz Glass
Preservation: Refrigeration/None

FECL #: AA62512
Tag: LR-A1-D3
Date/Time Collected: 07/16/98 11:15
Matrix: Soil
Container(s): 1-4oz Glass
Preservation: Refrigeration/None

FECL #: AA62513
Tag: LR-A1-D4
Date/Time Collected: 07/16/98 11:20
Matrix: Soil
Container(s): 1-4oz Glass
Preservation: Refrigeration/None



Analytical Laboratory Report
Weston
July 17, 1998

FECL #: AA62514
Tag: LR-A1-D5
Date/Time Collected: 07/16/98 11:25
Matrix: Soil
Container(s): 1-4oz Glass
Preservation: Refrigeration/None

FECL #: AA62515
Tag: LR-A1-D6
Date/Time Collected: 07/16/98 11:40
Matrix: Soil
Container(s): 1-4oz Glass
Preservation: Refrigeration/None

FECL #: AA62516
Tag: LR-A1-D7
Date/Time Collected: 07/16/98 11:45
Matrix: Soil
Container(s): 1-4oz Glass
Preservation: Refrigeration/None



Analytical Laboratory Report
Weston
July 17, 1998

FECL #: AA62511
Tag: LR-A1-D2
Date/Time Collected: 07/16/98 11:10
Matrix: Soil

Analysis	Results	Units	MDL	Method	Analyst	Date Run
Metals						
Arsenic	11.3	mg/kg	0.50	6020	P R	07/16/98
Lead	9.6	mg/kg	1.0	6020	P R	07/16/98
Organics						
Benzo(a)pyrene	Not detected	mg/kg	0.33	8270	JB	07/17/98
PNA Extraction	Completed				JKB	07/16/98

FECL #: AA62512
Tag: LR-A1-D3
Date/Time Collected: 07/16/98 11:15
Matrix: Soil

Analysis	Results	Units	MDL	Method	Analyst	Date Run
Metals						
Arsenic	9.69	mg/kg	0.50	6020	P R	07/16/98
Lead	9.8	mg/kg	1.0	6020	P R	07/16/98
Organics						
Benzo(a)pyrene	Not detected	mg/kg	0.33	8270	JB	07/17/98
PNA Extraction	Completed				JKB	07/16/98

FECL #: AA62513
Tag: LR-A1-D4
Date/Time Collected: 07/16/98 11:20
Matrix: Soil

Analysis	Results	Units	MDL	Method	Analyst	Date Run
Metals						
Arsenic	18.0	mg/kg	0.50	6020	P R	07/16/98
Lead	8.5	mg/kg	1.0	6020	P R	07/16/98



Analytical Laboratory Report
Weston
July 17, 1998

FECL #: AA62513 (Continued)
Tag: LR-A1-D4
Date/Time Collected: 07/16/98 11:20
Matrix: Soil

Analysis	Results	Units	MDL	Method	Analyst	Date Run
<i>Organics</i>						
Benzo(a)pyrene	Not detected	mg/kg	0.33	8270	JB	07/17/98
PNA Extraction	Completed				JKB	07/16/98

FECL #: AA62514
Tag: LR-A1-D5
Date/Time Collected: 07/16/98 11:25
Matrix: Soil

Analysis	Results	Units	MDL	Method	Analyst	Date Run
<i>Metals</i>						
Arsenic	11.7	mg/kg	0.50	6020	P R	07/16/98
Lead	7.5	mg/kg	1.0	6020	P R	07/16/98
<i>Organics</i>						
Benzo(a)pyrene	Not detected	mg/kg	0.33	8270	JB	07/17/98
PNA Extraction	Completed				JKB	07/16/98

FECL #: AA62515
Tag: LR-A1-D6
Date/Time Collected: 07/16/98 11:40
Matrix: Soil

Analysis	Results	Units	MDL	Method	Analyst	Date Run
<i>Metals</i>						
Arsenic	6.40	mg/kg	0.50	6020	P R	07/16/98
Lead	6.9	mg/kg	1.0	6020	P R	07/16/98
<i>Organics</i>						
Benzo(a)pyrene	Not detected	mg/kg	0.33	8270	JB	07/17/98
PNA Extraction	Completed				JKB	07/16/98



Analytical Laboratory Report
Weston
July 17, 1998

FECL #: AA62516
Tag: LR-A1-D7
Date/Time Collected: 07/16/98 11:45
Matrix: Soil

Analysis	Results	Units	MDL	Method	Analyst	Date Run
Metals						
Arsenic	6.17	mg/kg	0.50	6020	P R	07/16/98
Lead	7.0	mg/kg	1.0	6020	P R	07/16/98
Organics						
Benzo(a)pyrene	Not detected	mg/kg	0.33	8270	JB	07/17/98
PNA Extraction	Completed				JKB	07/16/98

Note: Methods may be modified for improved performance.
Results reported on a dry weight basis, where applicable.
Results relate only to items tested.
Report shall not be reproduced except in full, without the written approval of FECL.

Violetta F. Murshak

Violetta F. Murshak
Laboratory Director



Fire & Environmental Consulting Laboratories, Inc.

One East Complex 1451 East Lansing Dr., Suite 222 East Lansing, MI 48823 (517) 332-0167 FAX (517) 332-6333
Indianapolis (317) 577-8087

INVOICE TO

CHAIN OF CUSTODY RECORD

REPORT TO

NAME Bob Metcalf
 ADDRESS _____
 CITY _____ STATE _____ ZIP CODE _____
 P.O. NO. _____ PHONE NO. _____ FAX NO. _____

NAME Jack Gallagher
 ADDRESS 3 Hawthorn Parkway Ste 400
 CITY Vernon Hills STATE IL ZIP CODE 60061
 PHONE NO. (810) 733-3089 FAX NO. Hotel (810) 232-2225 Office (847) 918-4053

PROJECT NO. _____ CLIENT GM
 SAMPLER SIGNATURE [Signature] SAMPLER - PLEASE PRINT NAME Jack Gallagher
 AFFILIATION WESTON

PRESERVATIVE CODE _____
 REFRIGERATE (Y/N) _____
 BOTTLE TYPE 4-02
 SAMPLE TYPE
 GW WW SW SOIL
 SLUDGE OTHER _____
 CODE: A = NONE
 B = HNO₃
 C = H₂SO₄
 D = NaOH
 E = HCL
 F = Ice

FEC LAB. NO.	SAMPLE COLLECTION YEAR:		SAMPLE TAG IDENTIFICATION-DESCRIPTION	TOTAL NO. CONTAINERS
	DATE	TIME		
<u>503</u>	<u>7/15/98</u>	<u>1415</u>	<u>LR-A1-B3</u>	<u>1</u>
<u>504</u>		<u>1420</u>	<u>- B4</u>	
<u>505</u>		<u>1430</u>	<u>- C3</u>	
<u>506</u>		<u>1440</u>	<u>- C4</u>	
<u>507</u>		<u>1450</u>	<u>- C5</u>	
<u>508</u>		<u>1455</u>	<u>LR-A2-Da</u>	
<u>509</u>		<u>1510</u>	<u>LR-A2-Ea</u>	
<u>510</u>		<u>1515</u>	<u>LR-A2-Fa</u>	

ANALYSES

<u>1</u>	<u>Pb, As, Benzo(a) pyrene</u>
	<u>Benzo (q) pyrene</u>
	<u>24 hr. TAT</u>
	<u>FAX results to Jack @ Hotel and to Bobu @ Office. (#s above)</u>

RELINQUISHED BY: SIGNATURE [Signature] DATE 7/16/98 TIME 1315
 RECEIVED BY: SIGNATURE Isaiah M. [Signature] DATE 7/16/98 TIME 1315

RELINQUISHED BY: SIGNATURE Isaiah M. [Signature] DATE 7/16/98 TIME 1514
 RECEIVED AT FECL BY: SIGNATURE [Signature] DATE 7/16/98 TIME 1514

RELINQUISHED BY: SIGNATURE _____ DATE _____ TIME _____
 RECEIVED BY: SIGNATURE _____ DATE _____ TIME _____

SEAL NO. _____ SEAL INTACT YES NO INITIALS _____
 SEAL NO. _____ SEAL INTACT YES NO INITIALS _____
 NOTES: TEMP. ON ARRIVAL _____



Fire & Environmental Consulting Laboratories, Inc.

One East Complex 1451 East Lansing Dr., Suite 222 East Lansing, MI 48823 (517) 332-0167 FAX (517) 332-6333
Indianapolis (317) 577-8087

INVOICE TO

CHAIN OF CUSTODY RECORD

REPORT TO

NAME Bob Metcalf
 ADDRESS _____
 CITY _____ STATE _____ ZIP CODE _____
 P.O. NO. _____ PHONE NO. _____ FAX NO. _____

NAME Jack Gallagher
 ADDRESS 3 Hawthorn Parkway Ste 400
 CITY Vernon Hills STATE IL ZIP CODE 60061
 PHONE NO. (810) 733-3029 FAX NO. Hotel (810) 232-4625 / Office (847) 918-4055

PROJECT NO. _____ CLIENT GM
 SAMPLER SIGNATURE Jack Gallagher SAMPLER - PLEASE PRINT NAME Jack Gallagher
 AFFILIATION WESTON

PRESERVATIVE CODE _____
 REFRIGERATE (Y/N) _____
 BOTTLE TYPE 4-07
 SAMPLE TYPE: GW WW SW SOIL
 SLUDGE OTHER _____
 CODE: A = NONE, B = HNO₃, C = H₂SO₄, D = NaOH, E = HCL, F = Ice

FEC LAB. NO.	SAMPLE COLLECTION YEAR:		SAMPLE TAG IDENTIFICATION-DESCRIPTION	TOTAL NO. CONTAINERS
	DATE	TIME		
<u>62511</u>	<u>7/16/98</u>	<u>1110</u>	<u>LR-A1-D2</u>	<u>1</u>
<u>512</u>	↓	<u>1115</u>	<u>-D3</u>	↓
<u>513</u>	↓	<u>1120</u>	<u>-D4</u>	↓
<u>514</u>	↓	<u>1125</u>	<u>-D5</u>	↓
<u>515</u>	↓	<u>1140</u>	<u>-D6</u>	↓
<u>516</u>	↓	<u>1145</u>	<u>-D7</u>	↓

ANALYSES Benzene, pyrene, Ice
Pb, As, Arsenic

↓ ↓ ↓ ↓

24 hr TAT
FAX results to Jack @ Hotel
and to Bobu @ office
(#s above)

RELINQUISHED BY: SIGNATURE Jack Gallagher DATE 7/16/98 TIME 1315
 RECEIVED BY: SIGNATURE Isaiah Murchio DATE 7-16-98 TIME 1316

RELINQUISHED BY: SIGNATURE Isaiah Murchio DATE 7/16/98 TIME 1,141
 RECEIVED AT FECL BY: SIGNATURE J. Berchio DATE 7-16-98 TIME 1514

RELINQUISHED BY: SIGNATURE _____ DATE _____ TIME _____
 RECEIVED BY: SIGNATURE _____ DATE _____ TIME _____

SEAL NO. _____ SEAL INTACT YES NO INITIALS _____ NOTES: TEMP. ON ARRIVAL _____
 SEAL NO. _____ SEAL INTACT YES NO INITIALS _____



Fire & Environmental Consulting Laboratories, Inc.

One East Complex 1451 East Lansing Drive, Suite 222 East Lansing, MI 48823
Phone (517) 332-0167 · Fax (517) 332-6333

July 20, 1998

Attention: Mr. Jack Gallagher

Weston
3 Hawthorn Pky.
Vernon Hills, IL 60061

Analytical Laboratory Report

FECL #(s): AA62566-AA62573

Project: GM

Samples collected by: J. GALLAGHER

Date/Time Submitted: 07/17/98 17:50

PO #: Verbal

FECL #: AA62566

Tag: LR-A1-E2

Date/Time Collected: 07/17/98 11:05

Matrix: Soil

Container(s): 1-4oz. glass

Preservation: Refrigeration/None

FECL #: AA62567

Tag: LR-A1-E3

Date/Time Collected: 07/17/98 11:10

Matrix: Soil

Container(s): 1-4oz. glass

Preservation: Refrigeration/None

FECL #: AA62568

Tag: LR-A1-E4

Date/Time Collected: 07/17/98 11:20

Matrix: Soil

Container(s): 1-4oz. glass

Preservation: Refrigeration/None



Analytical Laboratory Report
Weston
July 20, 1998

FECL #: AA62569
Tag: LR-A1-E5
Date/Time Collected: 07/17/98 11:30
Matrix: Soil
Container(s): 1-4oz. glass
Preservation: Refrigeration/None

FECL #: AA62570
Tag: LR-A1-E6
Date/Time Collected: 07/17/98 11:35
Matrix: Soil
Container(s): 1-4oz. glass
Preservation: Refrigeration/None

FECL #: AA62571
Tag: LR-A1-E7
Date/Time Collected: 07/17/98 11:40
Matrix: Soil
Container(s): 1-4oz. glass
Preservation: Refrigeration/None

FECL #: AA62572
Tag: LR-A1-E8
Date/Time Collected: 07/17/98 11:50
Matrix: Soil
Container(s): 1-4oz. glass
Preservation: Refrigeration/None

FECL #: AA62573
Tag: LR-A1-E9
Date/Time Collected: 07/17/98 11:55
Matrix: Soil
Container(s): 1-4oz. glass
Preservation: Refrigeration/None



Analytical Laboratory Report
Weston
July 20, 1998

FECL #: AA62566
Tag: LR-A1-E2
Date/Time Collected: 07/17/98 11:05
Matrix: Soil

Analysis	Results	Units	MDL	Method	Analyst	Date Run
Metals						
Arsenic	8.83	mg/kg	0.50	6020	P R	07/20/98
Lead	6.4	mg/kg	1.0	6020	P R	07/20/98
Organics						
Benzo(a)pyrene	Not detected	mg/kg	0.33	8270	JB	07/20/98
PNA Extraction	Completed				KJT	07/19/98

FECL #: AA62567
Tag: LR-A1-E3
Date/Time Collected: 07/17/98 11:10
Matrix: Soil

Analysis	Results	Units	MDL	Method	Analyst	Date Run
Metals						
Arsenic	6.29	mg/kg	0.50	6020	P R	07/20/98
Lead	7.7	mg/kg	1.0	6020	P R	07/20/98
Organics						
Benzo(a)pyrene	Not detected	mg/kg	0.33	8270	JB	07/20/98
PNA Extraction	Completed				KJT	07/19/98

FECL #: AA62568
Tag: LR-A1-E4
Date/Time Collected: 07/17/98 11:20
Matrix: Soil

Analysis	Results	Units	MDL	Method	Analyst	Date Run
Metals						
Arsenic	4.87	mg/kg	0.50	6020	P R	07/20/98
Lead	6.0	mg/kg	1.0	6020	P R	07/20/98



Analytical Laboratory Report
Weston
July 20, 1998

FECL #: AA62568 (Continued)
Tag: LR-A1-E4
Date/Time Collected: 07/17/98 11:20
Matrix: Soil

Analysis	Results	Units	MDL	Method	Analyst	Date Run
<i>Organics</i>						
Benzo(a)pyrene	Not detected	mg/kg	0.33	8270	JB	07/20/98
PNA Extraction	Completed				KJT	07/19/98

FECL #: AA62569
Tag: LR-A1-E5
Date/Time Collected: 07/17/98 11:30
Matrix: Soil

Analysis	Results	Units	MDL	Method	Analyst	Date Run
<i>Metals</i>						
Arsenic	6.80	mg/kg	0.50	6020	P R	07/20/98
Lead	8.0	mg/kg	1.0	6020	P R	07/20/98
<i>Organics</i>						
Benzo(a)pyrene	Not detected	mg/kg	0.33	8270	JB	07/20/98
PNA Extraction	Completed				KJT	07/19/98

FECL #: AA62570
Tag: LR-A1-E6
Date/Time Collected: 07/17/98 11:35
Matrix: Soil

Analysis	Results	Units	MDL	Method	Analyst	Date Run
<i>Metals</i>						
Arsenic	6.90	mg/kg	0.50	6020	P R	07/20/98
Lead	14.8	mg/kg	1.0	6020	P R	07/20/98
<i>Organics</i>						
Benzo(a)pyrene	Not detected	mg/kg	0.33	8270	JB	07/20/98
PNA Extraction	Completed				KJT	07/19/98



Analytical Laboratory Report
Weston
July 20, 1998

FECL #: AA62571
Tag: LR-A1-E7
Date/Time Collected: 07/17/98 11:40
Matrix: Soil

Analysis	Results	Units	MDL	Method	Analyst	Date Run
<i>Metals</i>						
Arsenic	16.6	mg/kg	0.50	6020	P R	07/20/98
Lead	8.8	mg/kg	1.0	6020	P R	07/20/98
<i>Organics</i>						
Benzo(a)pyrene	Not detected	mg/kg	0.33	8270	JB	07/20/98
PNA Extraction	Completed				KJT	07/19/98

FECL #: AA62572
Tag: LR-A1-E8
Date/Time Collected: 07/17/98 11:50
Matrix: Soil

Analysis	Results	Units	MDL	Method	Analyst	Date Run
<i>Metals</i>						
Arsenic	6.35	mg/kg	0.50	6020	P R	07/20/98
Lead	15.1	mg/kg	1.0	6020	P R	07/20/98
<i>Organics</i>						
Benzo(a)pyrene	Not detected	mg/kg	0.33	8270	JB	07/20/98
PNA Extraction	Completed				KJT	07/19/98

FECL #: AA62573
Tag: LR-A1-E9
Date/Time Collected: 07/17/98 11:55
Matrix: Soil

Analysis	Results	Units	MDL	Method	Analyst	Date Run
<i>Metals</i>						
Arsenic	8.67	mg/kg	0.50	6020	P R	07/20/98
Lead	10.4	mg/kg	1.0	6020	P R	07/20/98



Analytical Laboratory Report
Weston
July 20, 1998

FECL #: AA62573 (Continued)
Tag: LR-A1-E9
Date/Time Collected: 07/17/98 11:55
Matrix: Soil

Analysis	Results	Units	MDL	Method	Analyst	Date Run
<i>Organics</i>						
Benzo(a)pyrene	Not detected	mg/kg	0.33	8270	JB	07/20/98
PNA Extraction	Completed				KJT	07/19/98

Note: Methods may be modified for improved performance.
Results reported on a dry weight basis, where applicable.
Results relate only to items tested.
Report shall not be reproduced except in full, without the written approval of FECL.

Violetta F. Murshak
Violetta F. Murshak
Laboratory Director



Fire & Environmental Consulting Laboratories, Inc.

One East Complex 1451 East Lansing Drive, Suite 222 East Lansing, MI 48823
Phone (517) 332-0167 Fax (517) 332-6333

July 24, 1998

Attention: Mr. Jack Gallagher

Weston
3 Hawthorn Pky Ste 400
Vernon Hills, IL 60061

Analytical Laboratory Report

FECL #(s): AA62713-AA62737

Project: GM

Samples collected by: J. GALLAGHER

Date/Time Submitted: 07/23/98 10:53

PO #: Verbal

FECL #: AA62713

Tag: LR-A1-F2

Date/Time Collected: 07/22/98 13:10

Matrix: Soil

Container(s): 1-4oz Glass

Preservation: Refrigeration/None

FECL #: AA62714

Tag: LR-A1-F3

Date/Time Collected: 07/22/98 13:15

Matrix: Soil

Container(s): 1-4oz Glass

Preservation: Refrigeration/None

FECL #: AA62715

Tag: LR-A1-F4

Date/Time Collected: 07/22/98 13:20

Matrix: Soil

Container(s): 1-4oz Glass

Preservation: Refrigeration/None



Analytical Laboratory Report
Weston
July 24, 1998

FECL #: AA62716
Tag: LR-A1-F5
Date/Time Collected: 07/22/98 13:30
Matrix: Soil
Container(s): 1-4oz Glass
Preservation: Refrigeration/None

FECL #: AA62717
Tag: LR-A1-F6
Date/Time Collected: 07/22/98 13:35
Matrix: Soil
Container(s): 1-4oz Glass
Preservation: Refrigeration/None

FECL #: AA62718
Tag: LR-A1-F7
Date/Time Collected: 07/22/98 13:40
Matrix: Soil
Container(s): 1-4oz Glass
Preservation: Refrigeration/None

FECL #: AA62719
Tag: LR-A1-F8
Date/Time Collected: 07/22/98 13:50
Matrix: Soil
Container(s): 1-4oz Glass
Preservation: Refrigeration/None

FECL #: AA62720
Tag: LR-A1-F9
Date/Time Collected: 07/22/98 13:55
Matrix: Soil
Container(s): 1-4oz Glass
Preservation: Refrigeration/None

FECL #: AA62721
Tag: LR-A1-J5
Date/Time Collected: 07/22/98 14:15
Matrix: Soil
Container(s): 1-4oz Glass
Preservation: Refrigeration/None



Analytical Laboratory Report
Weston
July 24, 1998

FECL #: AA62722
Tag: LR-A1-J6
Date/Time Collected: 07/22/98 14:20
Matrix: Soil
Container(s): 1-4oz Glass
Preservation: Refrigeration/None

FECL #: AA62723
Tag: LR-A1-J7
Date/Time Collected: 07/22/98 14:25
Matrix: Soil
Container(s): 1-4oz Glass
Preservation: Refrigeration/None

FECL #: AA62724
Tag: LR-A1-K2
Date/Time Collected: 07/22/98 14:40
Matrix: Soil
Container(s): 1-4oz Glass
Preservation: Refrigeration/None

FECL #: AA62725
Tag: LR-A1-K3
Date/Time Collected: 07/22/98 14:50
Matrix: Soil
Container(s): 1-4oz Glass
Preservation: Refrigeration/None

FECL #: AA62726
Tag: LR-A1-K4
Date/Time Collected: 07/22/98 14:55
Matrix: Soil
Container(s): 1-4oz Glass
Preservation: Refrigeration/None

FECL #: AA62727
Tag: LR-A1-K5
Date/Time Collected: 07/22/98 16:00
Matrix: Soil
Container(s): 1-4oz Glass
Preservation: Refrigeration/None



Analytical Laboratory Report
Weston
July 24, 1998

FECL #: AA62728
Tag: LR-A1-K6
Date/Time Collected: 07/22/98 16:05
Matrix: Soil
Container(s): 1-4oz Glass
Preservation: Refrigeration/None

FECL #: AA62729
Tag: LR-A1-K7
Date/Time Collected: 07/22/98 16:10
Matrix: Soil
Container(s): 1-4oz Glass
Preservation: Refrigeration/None

FECL #: AA62730
Tag: LR-A1-L2
Date/Time Collected: 07/22/98 16:15
Matrix: Soil
Container(s): 1-4oz Glass
Preservation: Refrigeration/None

FECL #: AA62731
Tag: LR-A1-L3
Date/Time Collected: 07/22/98 16:20
Matrix: Soil
Container(s): 1-4oz Glass
Preservation: Refrigeration/None

FECL #: AA62732
Tag: LR-A1-L4
Date/Time Collected: 07/22/98 16:25
Matrix: Soil
Container(s): 1-4oz Glass
Preservation: Refrigeration/None

FECL #: AA62733
Tag: LR-A1-SW9
Date/Time Collected: 07/22/98 16:30
Matrix: Soil
Container(s): 1-4oz Glass
Preservation: Refrigeration/None



Analytical Laboratory Report
Weston
July 24, 1998

FECL #: AA62734
Tag: LR-A1-SW10
Date/Time Collected: 07/22/98 16:35
Matrix: Soil
Container(s): 1-4oz Glass
Preservation: Refrigeration/None

FECL #: AA62735
Tag: LR-A1-SW11
Date/Time Collected: 07/22/98 16:40
Matrix: Soil
Container(s): 1-4oz Glass
Preservation: Refrigeration/None

FECL #: AA62736
Tag: LR-A1-SW12
Date/Time Collected: 07/22/98 16:45
Matrix: Soil
Container(s): 1-4oz Glass
Preservation: Refrigeration/None

FECL #: AA62737
Tag: LR-A2-A5Sa
Date/Time Collected: 07/23/98 08:30
Matrix: Soil
Container(s): 1-4oz Glass
Preservation: Refrigeration/None



Analytical Laboratory Report
Weston
July 24, 1998

FECL #: AA62713
Tag: LR-A1-F2
Date/Time Collected: 07/22/98 13:10
Matrix: Soil

Analysis	Results	Units	MDL	Method	Analyst	Date Run
Metals						
Arsenic	8.09	mg/kg	0.50	6020	P R	07/23/98
Lead	9.8	mg/kg	1.0	6020	P R	07/23/98
Organics						
Benzo(a)pyrene	Not detected	mg/kg	0.33	8270	JB	07/24/98
PNA Extraction	Completed				JKB	07/23/98

FECL #: AA62714
Tag: LR-A1-F3
Date/Time Collected: 07/22/98 13:15
Matrix: Soil

Analysis	Results	Units	MDL	Method	Analyst	Date Run
Metals						
Arsenic	4.64	mg/kg	0.50	6020	P R	07/23/98
Lead	6.2	mg/kg	1.0	6020	P R	07/23/98
Organics						
Benzo(a)pyrene	Not detected	mg/kg	0.33	8270	JB	07/24/98
PNA Extraction	Completed				JKB	07/23/98

FECL #: AA62715
Tag: LR-A1-F4
Date/Time Collected: 07/22/98 13:20
Matrix: Soil

Analysis	Results	Units	MDL	Method	Analyst	Date Run
Metals						
Arsenic	3.55	mg/kg	0.50	6020	P R	07/23/98
Lead	7.3	mg/kg	1.0	6020	P R	07/23/98



Analytical Laboratory Report
 Weston
 July 24, 1998

FECL #: AA62715 (Continued)
Tag: LR-A1-F4
Date/Time Collected: 07/22/98 13:20
Matrix: Soil

Analysis	Results	Units	MDL	Method	Analyst	Date Run
<i>Organics</i>						
Benzo(a)pyrene	Not detected	mg/kg	0.33	8270	JB	07/24/98
PNA Extraction	Completed				JKB	07/23/98

FECL #: AA62716
Tag: LR-A1-F5
Date/Time Collected: 07/22/98 13:30
Matrix: Soil

Analysis	Results	Units	MDL	Method	Analyst	Date Run
<i>Metals</i>						
Arsenic	3.51	mg/kg	0.50	6020	P R	07/23/98
Lead	6.2	mg/kg	1.0	6020	P R	07/23/98
<i>Organics</i>						
Benzo(a)pyrene	Not detected	mg/kg	0.33	8270	JB	07/24/98
PNA Extraction	Completed				JKB	07/23/98

FECL #: AA62717
Tag: LR-A1-F6
Date/Time Collected: 07/22/98 13:35
Matrix: Soil

Analysis	Results	Units	MDL	Method	Analyst	Date Run
<i>Metals</i>						
Arsenic	5.84	mg/kg	0.50	6020	P R	07/23/98
Lead	7.1	mg/kg	1.0	6020	P R	07/23/98
<i>Organics</i>						
Benzo(a)pyrene	Not detected	mg/kg	0.33	8270	JB	07/24/98
PNA Extraction	Completed				JKB	07/23/98



Analytical Laboratory Report
Weston
July 24, 1998

FECL #: AA62718
Tag: LR-A1-F7
Date/Time Collected: 07/22/98 13:40
Matrix: Soil

Analysis	Results	Units	MDL	Method	Analyst	Date Run
Metals						
Arsenic	4.03	mg/kg	0.50	6020	P R	07/23/98
Lead	19.3	mg/kg	1.0	6020	P R	07/23/98
Organics						
Benzo(a)pyrene	Not detected	mg/kg	0.33	8270	JB	07/24/98
PNA Extraction	Completed				JKB	07/23/98

FECL #: AA62719
Tag: LR-A1-F8
Date/Time Collected: 07/22/98 13:50
Matrix: Soil

Analysis	Results	Units	MDL	Method	Analyst	Date Run
Metals						
Arsenic	2.74	mg/kg	0.50	6020	P R	07/23/98
Lead	7.3	mg/kg	1.0	6020	P R	07/23/98
Organics						
Benzo(a)pyrene	Not detected	mg/kg	0.33	8270	JB	07/24/98
PNA Extraction	Completed				JKB	07/23/98

FECL #: AA62720
Tag: LR-A1-F9
Date/Time Collected: 07/22/98 13:55
Matrix: Soil

Analysis	Results	Units	MDL	Method	Analyst	Date Run
Metals						
Arsenic	1.86	mg/kg	0.50	6020	P R	07/23/98
Lead	4.5	mg/kg	1.0	6020	P R	07/23/98



Analytical Laboratory Report
Weston
July 24, 1998

FECL #: AA62720 (Continued)
Tag: LR-A1-F9
Date/Time Collected: 07/22/98 13:55
Matrix: Soil

Analysis	Results	Units	MDL	Method	Analyst	Date Run
<i>Organics</i>						
Benzo(a)pyrene	Not detected	mg/kg	0.33	8270	JB	07/24/98
PNA Extraction	Completed				JKB	07/23/98

FECL #: AA62721
Tag: LR-A1-J5
Date/Time Collected: 07/22/98 14:15
Matrix: Soil

Analysis	Results	Units	MDL	Method	Analyst	Date Run
<i>Metals</i>						
Arsenic	4.05	mg/kg	0.50	6020	P R	07/23/98
Lead	5.7	mg/kg	1.0	6020	P R	07/23/98
<i>Organics</i>						
Benzo(a)pyrene	Not detected	mg/kg	0.33	8270	JB	07/24/98
PNA Extraction	Completed				JKB	07/23/98

FECL #: AA62722
Tag: LR-A1-J6
Date/Time Collected: 07/22/98 14:20
Matrix: Soil

Analysis	Results	Units	MDL	Method	Analyst	Date Run
<i>Metals</i>						
Arsenic	3.37	mg/kg	0.50	6020	P R	07/23/98
Lead	6.4	mg/kg	1.0	6020	P R	07/23/98
<i>Organics</i>						
Benzo(a)pyrene	Not detected	mg/kg	0.33	8270	JB	07/24/98
PNA Extraction	Completed				JKB	07/23/98



Analytical Laboratory Report

Weston

July 24, 1998

FECL #: AA62723

Tag: LR-A1-J7

Date/Time Collected: 07/22/98 14:25

Matrix: Soil

Analysis	Results	Units	MDL	Method	Analyst	Date Run
<i>Metals</i>						
Arsenic	3.76	mg/kg	0.50	6020	P R	07/23/98
Lead	7.0	mg/kg	1.0	6020	P R	07/23/98
<i>Organics</i>						
Benzo(a)pyrene	Not detected	mg/kg	0.33	8270	JB	07/24/98
PNA Extraction	Completed				JKB	07/23/98

FECL #: AA62724

Tag: LR-A1-K2

Date/Time Collected: 07/22/98 14:40

Matrix: Soil

Analysis	Results	Units	MDL	Method	Analyst	Date Run
<i>Metals</i>						
Arsenic	3.54	mg/kg	0.50	6020	P R	07/23/98
Lead	7.3	mg/kg	1.0	6020	P R	07/23/98
<i>Organics</i>						
Benzo(a)pyrene	Not detected	mg/kg	0.33	8270	JB	07/24/98
PNA Extraction	Completed				JKB	07/23/98

FECL #: AA62725

Tag: LR-A1-K3

Date/Time Collected: 07/22/98 14:50

Matrix: Soil

Analysis	Results	Units	MDL	Method	Analyst	Date Run
<i>Metals</i>						
Arsenic	3.62	mg/kg	0.50	6020	P R	07/23/98
Lead	6.3	mg/kg	1.0	6020	P R	07/23/98



Analytical Laboratory Report
Weston
July 24, 1998

FECL #: AA62725 (Continued)

Tag: LR-A1-K3

Date/Time Collected: 07/22/98 14:50

Matrix: Soil

Analysis	Results	Units	MDL	Method	Analyst	Date Run
<i>Organics</i>						
Benzo(a)pyrene	Not detected	mg/kg	0.33	8270	JB	07/24/98
PNA Extraction	Completed				JKB	07/23/98

FECL #: AA62726

Tag: LR-A1-K4

Date/Time Collected: 07/22/98 14:55

Matrix: Soil

Analysis	Results	Units	MDL	Method	Analyst	Date Run
<i>Metals</i>						
Arsenic	4.15	mg/kg	0.50	6020	P R	07/23/98
Lead	6.0	mg/kg	1.0	6020	P R	07/23/98
<i>Organics</i>						
Benzo(a)pyrene	Not detected	mg/kg	0.33	8270	JB	07/24/98
PNA Extraction	Completed				JKB	07/23/98

FECL #: AA62727

Tag: LR-A1-K5

Date/Time Collected: 07/22/98 16:00

Matrix: Soil

Analysis	Results	Units	MDL	Method	Analyst	Date Run
<i>Metals</i>						
Arsenic	4.55	mg/kg	0.50	6020	P R	07/23/98
Lead	19.8	mg/kg	1.0	6020	P R	07/23/98
<i>Organics</i>						
Benzo(a)pyrene	Not detected	mg/kg	0.33	8270	JB	07/24/98
PNA Extraction	Completed				JKB	07/23/98



Analytical Laboratory Report
Weston
July 24, 1998

FECL #: AA62728
Tag: LR-A1-K6
Date/Time Collected: 07/22/98 16:05
Matrix: Soil

Analysis	Results	Units	MDL	Method	Analyst	Date Run
Metals						
Arsenic	3.67	mg/kg	0.50	6020	P R	07/23/98
Lead	8.5	mg/kg	1.0	6020	P R	07/23/98
Organics						
Benzo(a)pyrene	Not detected	mg/kg	0.33	8270	JB	07/24/98
PNA Extraction	Completed				JKB	07/23/98

FECL #: AA62729
Tag: LR-A1-K7
Date/Time Collected: 07/22/98 16:10
Matrix: Soil

Analysis	Results	Units	MDL	Method	Analyst	Date Run
Metals						
Arsenic	3.78	mg/kg	0.50	6020	P R	07/23/98
Lead	6.1	mg/kg	1.0	6020	P R	07/23/98
Organics						
Benzo(a)pyrene	Not detected	mg/kg	0.33	8270	JB	07/24/98
PNA Extraction	Completed				JKB	07/23/98

FECL #: AA62730
Tag: LR-A1-L2
Date/Time Collected: 07/22/98 16:15
Matrix: Soil

Analysis	Results	Units	MDL	Method	Analyst	Date Run
Metals						
Arsenic	3.30	mg/kg	0.50	6020	P R	07/23/98
Lead	6.0	mg/kg	1.0	6020	P R	07/23/98



Analytical Laboratory Report
 Weston
 July 24, 1998

FECL #: AA62730 (Continued)
Tag: LR-A1-L2
Date/Time Collected: 07/22/98 16:15
Matrix: Soil

Analysis	Results	Units	MDL	Method	Analyst	Date Run
<i>Organics</i>						
Benzo(a)pyrene	Not detected	mg/kg	0.33	8270	JB	07/24/98
PNA Extraction	Completed				JKB	07/23/98

FECL #: AA62731
Tag: LR-A1-L3
Date/Time Collected: 07/22/98 16:20
Matrix: Soil

Analysis	Results	Units	MDL	Method	Analyst	Date Run
<i>Metals</i>						
Arsenic	5.25	mg/kg	0.50	6020	P R	07/23/98
Lead	12.4	mg/kg	1.0	6020	P R	07/23/98
<i>Organics</i>						
Benzo(a)pyrene	Not detected	mg/kg	0.33	8270	JB	07/24/98
PNA Extraction	Completed				JKB	07/23/98

FECL #: AA62732
Tag: LR-A1-L4
Date/Time Collected: 07/22/98 16:25
Matrix: Soil

Analysis	Results	Units	MDL	Method	Analyst	Date Run
<i>Metals</i>						
Arsenic	1.06	mg/kg	0.50	6020	P R	07/23/98
Lead	7.9	mg/kg	1.0	6020	P R	07/23/98
<i>Organics</i>						
Benzo(a)pyrene	Not detected	mg/kg	0.33	8270	JB	07/24/98
PNA Extraction	Completed				JKB	07/23/98



Analytical Laboratory Report
 Weston
 July 24, 1998

FECL #: AA62733
Tag: LR-A1-SW9
Date/Time Collected: 07/22/98 16:30
Matrix: Soil

Analysis	Results	Units	MDL	Method	Analyst	Date Run
<i>Metals</i>						
Arsenic	1.83	mg/kg	0.50	6020	P R	07/23/98
Lead	10.7	mg/kg	1.0	6020	P R	07/23/98
<i>Organics</i>						
Benzo(a)pyrene	Not detected	mg/kg	0.33	8270	JB	07/24/98
PNA Extraction	Completed				JKB	07/23/98

FECL #: AA62734
Tag: LR-A1-SW10
Date/Time Collected: 07/22/98 16:35
Matrix: Soil

Analysis	Results	Units	MDL	Method	Analyst	Date Run
<i>Metals</i>						
Arsenic	1.70	mg/kg	0.50	6020	P R	07/23/98
Lead	40.2	mg/kg	1.0	6020	P R	07/23/98
<i>Organics</i>						
Benzo(a)pyrene	Not detected	mg/kg	0.33	8270	JB	07/24/98
PNA Extraction	Completed				JKB	07/23/98

FECL #: AA62735
Tag: LR-A1-SW11
Date/Time Collected: 07/22/98 16:40
Matrix: Soil

Analysis	Results	Units	MDL	Method	Analyst	Date Run
<i>Metals</i>						
Arsenic	1.52	mg/kg	0.50	6020	P R	07/23/98
Lead	6.3	mg/kg	1.0	6020	P R	07/23/98



Analytical Laboratory Report
 Weston
 July 24, 1998

FECL #: AA62735 (Continued)
Tag: LR-A1-SW11
Date/Time Collected: 07/22/98 16:40
Matrix: Soil

Analysis	Results	Units	MDL	Method	Analyst	Date Run
<i>Organics</i>						
Benzo(a)pyrene	Not detected	mg/kg	0.33	8270	JB	07/24/98
PNA Extraction	Completed				JKB	07/23/98

FECL #: AA62736
Tag: LR-A1-SW12
Date/Time Collected: 07/22/98 16:45
Matrix: Soil

Analysis	Results	Units	MDL	Method	Analyst	Date Run
<i>Metals</i>						
Arsenic	3.57	mg/kg	0.50	6020	P R	07/23/98
Lead	58.5	mg/kg	1.0	6020	P R	07/23/98
<i>Organics</i>						
Benzo(a)pyrene	Not detected	mg/kg	0.33	8270	JB	07/24/98
PNA Extraction	Completed				JKB	07/23/98

FECL #: AA62737
Tag: LR-A2-A5Sa
Date/Time Collected: 07/23/98 08:30
Matrix: Soil

Analysis	Results	Units	MDL	Method	Analyst	Date Run
<i>Metals</i>						
Arsenic	19.4	mg/kg	0.50	6020	P R	07/23/98
Lead	15.5	mg/kg	1.0	6020	P R	07/23/98
<i>Organics</i>						
Benzo(a)pyrene	Not detected	mg/kg	0.33	8270	JB	07/24/98
PNA Extraction	Completed				JKB	07/23/98



Analytical Laboratory Report
Weston
July 24, 1998

Note: Methods may be modified for improved performance.
Results reported on a dry weight basis, where applicable.
Results relate only to items tested.
Report shall not be reproduced except in full, without the written approval of FECL.

Violetta F. Murshak

Violetta F. Murshak
Laboratory Director



Fire & Environmental Consulting Laboratories, Inc.

One East Complex 1451 East Lansing Drive, Suite 222 East Lansing, MI 48823
Phone (517) 332-0167 Fax (517) 332-6333

August 17, 1998

Attention: Mr. Jack Gallagher

Weston
3 Hawthorne PKY Ste. 400
Vernon Hill, IL 60061

Analytical Laboratory Report

FECL #(s): AA63857-AA63864

Project: GM Weston

Samples collected by: J. GALLAGHER

Date/Time Submitted: 08/13/98 18:00

PO #: Verbal

FECL #: AA63857

Tag: LR-A1-G2

Date/Time Collected: 08/13/98 09:10

Matrix: Soil

Container(s): 1-4oz Glass

Preservation: Refrigeration/None

FECL #: AA63858

Tag: LR-A1-G3

Date/Time Collected: 08/13/98 09:10

Matrix: Soil

Container(s): 1-4oz Glass

Preservation: Refrigeration/None

FECL #: AA63859

Tag: LR-A1-H2

Date/Time Collected: 08/13/98 09:10

Matrix: Soil

Container(s): 1-4oz Glass

Preservation: Refrigeration/None



Analytical Laboratory Report
Weston
August 17, 1998

FECL #: AA63860
Tag: LR-A1-H3
Date/Time Collected: 08/13/98 09:10
Matrix: Soil
Container(s): 1-4oz Glass
Preservation: Refrigeration/None

FECL #: AA63861
Tag: LR-BK1
Date/Time Collected: 08/13/98 09:10
Matrix: Soil
Container(s): 1-4oz Glass
Preservation: Refrigeration/None

FECL #: AA63862
Tag: LR-BK2
Date/Time Collected: 08/13/98 09:10
Matrix: Soil
Container(s): 1-4oz Glass
Preservation: Refrigeration/None

FECL #: AA63863
Tag: LR-BK3
Date/Time Collected: 08/13/98 09:10
Matrix: Soil
Container(s): 1-4oz Glass
Preservation: Refrigeration/None

FECL #: AA63864
Tag: LR-BK4
Date/Time Collected: 08/13/98 09:10
Matrix: Soil
Container(s): 1-4oz Glass
Preservation: Refrigeration/None



Analytical Laboratory Report
 Weston
 August 17, 1998

FECL #: AA63857
Tag: LR-A1-G2
Date/Time Collected: 08/13/98 09:10
Matrix: Soil

Analysis	Results	Units	MDL	Method	Analyst	Date Run
Metals						
Arsenic	4.74	mg/kg	0.50	6020	P R	08/14/98
Lead	5.3	mg/kg	1.0	6020	P R	08/14/98
Organics						
Benzo(a)pyrene	Not detected	mg/kg	0.33	8270	JB	08/14/98
PNA Extraction	Completed				JKB	08/14/98

FECL #: AA63858
Tag: LR-A1-G3
Date/Time Collected: 08/13/98 09:10
Matrix: Soil

Analysis	Results	Units	MDL	Method	Analyst	Date Run
Metals						
Arsenic	6.96	mg/kg	0.50	6020	P R	08/14/98
Lead	7.2	mg/kg	1.0	6020	P R	08/14/98
Organics						
Benzo(a)pyrene	Not detected	mg/kg	0.33	8270	JB	08/14/98
PNA Extraction	Completed				JKB	08/14/98

FECL #: AA63859
Tag: LR-A1-H2
Date/Time Collected: 08/13/98 09:10
Matrix: Soil

Analysis	Results	Units	MDL	Method	Analyst	Date Run
Metals						
Arsenic	4.93	mg/kg	0.50	6020	P R	08/14/98
Lead	27.1	mg/kg	1.0	6020	P R	08/14/98



Analytical Laboratory Report
Weston
August 17, 1998

FECL #: AA63859 (Continued)

Tag: LR-A1-H2

Date/Time Collected: 08/13/98 09:10

Matrix: Soil

Analysis	Results	Units	MDL	Method	Analyst	Date Run
<i>Organics</i>						
Benzo(a)pyrene	Not detected	mg/kg	0.33	8270	JB	08/14/98
PNA Extraction	Completed				JKB	08/14/98

FECL #: AA63860

Tag: LR-A1-H3

Date/Time Collected: 08/13/98 09:10

Matrix: Soil

Analysis	Results	Units	MDL	Method	Analyst	Date Run
<i>Metals</i>						
Arsenic	5.55	mg/kg	0.50	6020	P R	08/14/98
Lead	5.8	mg/kg	1.0	6020	P R	08/14/98
<i>Organics</i>						
Benzo(a)pyrene	Not detected	mg/kg	0.33	8270	JB	08/14/98
PNA Extraction	Completed				JKB	08/14/98

FECL #: AA63861

Tag: LR-BK1

Date/Time Collected: 08/13/98 09:10

Matrix: Soil

Analysis	Results	Units	MDL	Method	Analyst	Date Run
<i>Metals</i>						
Arsenic	3.68	mg/kg	0.50	6020	P R	08/14/98



Analytical Laboratory Report
Weston
August 17, 1998

FECL #: AA63862
Tag: LR-BK2
Date/Time Collected: 08/13/98 09:10
Matrix: Soil

Analysis	Results	Units	MDL	Method	Analyst	Date Run
<i>Metals</i>						
Arsenic	1.40	mg/kg	0.50	6020	P R	08/14/98

FECL #: AA63863
Tag: LR-BK3
Date/Time Collected: 08/13/98 09:10
Matrix: Soil

Analysis	Results	Units	MDL	Method	Analyst	Date Run
<i>Metals</i>						
Arsenic	2.60	mg/kg	0.50	6020	P R	08/14/98

FECL #: AA63864
Tag: LR-BK4
Date/Time Collected: 08/13/98 09:10
Matrix: Soil

Analysis	Results	Units	MDL	Method	Analyst	Date Run
<i>Metals</i>						
Arsenic	2.95	mg/kg	0.50	6020	P R	08/14/98



Analytical Laboratory Report
Weston
August 17, 1998

Note: Methods may be modified for improved performance.
Results reported on a dry weight basis, where applicable.
Results relate only to items tested.
Report shall not be reproduced except in full, without the written approval of FECL.

Violetta F. Murshak

Violetta F. Murshak
Laboratory Director



Fire & Environmental Consulting Laboratories, Inc.

One East Complex 1451 East Lansing Dr., Suite 222 East Lansing, MI 48823 (517) 332-0167 FAX (517) 332-6333
Indianapolis (317) 577-8087

INVOICE TO

CHAIN OF CUSTODY RECORD

REPORT TO

NAME Bob Metcalf

ADDRESS _____

CITY _____ STATE _____ ZIP CODE _____

P.O. NO. _____ PHONE NO. _____ FAX NO. _____

NAME Jack Gallagher (WESTON)

ADDRESS 3 Hawthorn Parkway Ste 400

CITY Vernon Hills STATE IL ZIP CODE 60061

PHONE NO. (810) 733-3029 FAX NO. Site Babu 847 918 (810) 733-3029 (810) 733-3408

PROJECT NO. _____ CLIENT GM

SAMPLER SIGNATURE Jack Gallagher SAMPLER PLEASE PRINT NAME Jack Gallagher

AFFILIATION WESTON

PRESERVATIVE CODE F

REFRIGERATE (Y/N) _____

BOTTLE TYPE _____

SAMPLE TYPE
 GW WW SW SOIL
 SLUDGE OTHER _____

CODE: A = NONE
 B = HNO₃
 C = H₂SO₄
 D = NaOH
 E = HCL
 F = Ice

FEC LAB. NO.	SAMPLE COLLECTION YEAR:		SAMPLE TAG IDENTIFICATION-DESCRIPTION	TOTAL NO. CONTAINERS
	DATE	TIME		
83857	8/13/98	0910	LR-A1-G2	1
858		0915	- G3	
859		0920	- H2	
860		0925	- H3	
861		0945	LR-BK1	
862		0950	LR-BK2	
863		0955	LR-BK3	
864		1000	LR-BK4	

ANALYSES				
1				Arsenic, Lead, Benz(a)pyrene
				↓ ↓ ↓
				Arsenic only

RELINQUISHED BY: SIGNATURE Jack Gallagher DATE 8/13/98 TIME _____

RECEIVED BY: SIGNATURE [Signature] DATE 8-13-98 TIME 15:19

RELINQUISHED BY: SIGNATURE _____ DATE _____ TIME _____

RECEIVED BY: SIGNATURE _____ DATE _____ TIME _____

RELINQUISHED BY: SIGNATURE [Signature] DATE 8-13-98 TIME 18:05

RECEIVED AT FECL BY: SIGNATURE [Signature] DATE _____ TIME _____

SEAL NO. _____ SEAL INTACT YES NO INITIALS _____

SEAL NO. _____ SEAL INTACT YES NO INITIALS _____

NOTES: TEMP. ON ARRIVAL _____



Fire & Environmental Consulting Laboratories, Inc.

One East Complex 1451 East Lansing Drive, Suite 222 East Lansing, MI 48823
Phone (517) 332-0167 Fax (517) 332-6333

August 05, 1998

Attention: Mr. Jack Gallagher

Weston
3 Hawthorne PKY Ste. 400
Vernon Hill, IL 60061

Analytical Laboratory Report

FECL #(s): AA63464-AA63469

Project: GM

Samples collected by: J. GALLAGHER

Date/Time Submitted: 08/04/98 17:40

PO #: Verbal

FECL #: AA63464

Tag: LR-A1-G4

Date/Time Collected: 08/04/98

Matrix: Soil

Container(s): 1-4oz Glass

Preservation: Refrigeration/None

FECL #: AA63465

Tag: LR-A1-G5

Date/Time Collected: 08/04/98

Matrix: Soil

Container(s): 1-4oz Glass

Preservation: Refrigeration/None

FECL #: AA63466

Tag: LR-A1-G6

Date/Time Collected: 08/04/98

Matrix: Soil

Container(s): 1-4oz Glass

Preservation: Refrigeration/None



Analytical Laboratory Report
Weston
August 05, 1998

FECL #: AA63467
Tag: LR-A1-G7
Date/Time Collected: 08/04/98
Matrix: Soil
Container(s): 1-4oz Glass
Preservation: Refrigeration/None

FECL #: AA63468
Tag: LR-A1-H4
Date/Time Collected: 08/04/98
Matrix: Soil
Container(s): 1-4oz Glass
Preservation: Refrigeration/None

FECL #: AA63469
Tag: LR-A1-H5
Date/Time Collected: 08/04/98
Matrix: Soil
Container(s): 1-4oz Glass
Preservation: Refrigeration/None



Analytical Laboratory Report
Weston
August 05, 1998

FECL #: AA63464
Tag: LR-A1-G4
Date/Time Collected: 08/04/98
Matrix: Soil

Analysis	Results	Units	MDL	Method	Analyst	Date Run
Metals						
Arsenic	5.11	mg/kg	0.50	6020	P R	08/04/98
Lead	5.7	mg/kg	1.0	6020	P R	08/04/98
Organics						
Benzo(a)pyrene	Not detected	mg/kg	0.33	8270	JB	08/05/98
Pna extraction	Completed				KJT	08/05/98

FECL #: AA63465
Tag: LR-A1-G5
Date/Time Collected: 08/04/98
Matrix: Soil

Analysis	Results	Units	MDL	Method	Analyst	Date Run
Metals						
Arsenic	4.57	mg/kg	0.50	6020	P R	08/04/98
Lead	6.1	mg/kg	1.0	6020	P R	08/04/98
Organics						
Benzo(a)pyrene	Not detected	mg/kg	0.33	8270	JB	08/05/98
Pna extraction	Completed				KJT	08/05/98

FECL #: AA63466
Tag: LR-A1-G6
Date/Time Collected: 08/04/98
Matrix: Soil

Analysis	Results	Units	MDL	Method	Analyst	Date Run
Metals						
Arsenic	6.20	mg/kg	0.50	6020	P R	08/04/98
Lead	6.2	mg/kg	1.0	6020	P R	08/04/98



Analytical Laboratory Report
Weston
August 05, 1998

FECL #: AA63466 (Continued)
Tag: LR-A1-G6
Date/Time Collected: 08/04/98
Matrix: Soil

Analysis	Results	Units	MDL	Method	Analyst	Date Run
<i>Organics</i>						
Benzo(a)pyrene	Not detected	mg/kg	0.33	8270	JB	08/05/98
Pna extraction	Completed				KJT	08/05/98

FECL #: AA63467
Tag: LR-A1-G7
Date/Time Collected: 08/04/98
Matrix: Soil

Analysis	Results	Units	MDL	Method	Analyst	Date Run
<i>Metals</i>						
Arsenic	5.29	mg/kg	0.50	6020	P R	08/04/98
Lead	5.5	mg/kg	1.0	6020	P R	08/04/98
<i>Organics</i>						
Benzo(a)pyrene	Not detected	mg/kg	0.33	8270	JB	08/05/98
Pna extraction	Completed				KJT	08/05/98

FECL #: AA63468
Tag: LR-A1-H4
Date/Time Collected: 08/04/98
Matrix: Soil

Analysis	Results	Units	MDL	Method	Analyst	Date Run
<i>Metals</i>						
Arsenic	5.53	mg/kg	0.50	6020	P R	08/04/98
Lead	5.5	mg/kg	1.0	6020	P R	08/04/98
<i>Organics</i>						
Benzo(a)pyrene	Not detected	mg/kg	0.33	8270	JB	08/05/98
Pna extraction	Completed				KJT	08/05/98



Analytical Laboratory Report
Weston
August 05, 1998

FECL #: AA63469
Tag: LR-A1-H5
Date/Time Collected: 08/04/98
Matrix: Soil

Analysis	Results	Units	MDL	Method	Analyst	Date Run
Metals						
Arsenic	4.12	mg/kg	0.50	6020	P R	08/04/98
Lead	5.7	mg/kg	1.0	6020	P R	08/04/98
Organics						
Benzo(a)pyrene	Not detected	mg/kg	0.33	8270	JB	08/05/98
Pna extraction	Completed				KJT	08/05/98

Note: Methods may be modified for improved performance.
Results reported on a dry weight basis, where applicable.
Results relate only to items tested.
Report shall not be reproduced except in full, without the written approval of FECL.

Violetta F. Murshak

Violetta F. Murshak
Laboratory Director



INVOICE TO **CHAIN OF CUSTODY RECORD** **REPORT TO**

NAME **Bob Metcalf**
 ADDRESS
 CITY STATE ZIP CODE
 P.O. NO. PHONE NO. FAX NO.

NAME **Jack Gallagher**
 ADDRESS **3 Hawthorn Parkway Ste 400**
 CITY **Vernon Hills** STATE **IL** ZIP CODE **60061**
 PHONE NO. **(810) 733-3029** FAX NO. **Site (810) 733-3029 / Office (847) 918-4055**

PROJECT NO. CLIENT **GM**
 SAMPLER SIGNATURE **Jack Gallagher** SAMPLER - PLEASE PRINT NAME **Jack Gallagher**
 AFFILIATION **WESTON**

PRESERVATIVE CODE **F** SAMPLE TYPE
 REFRIGERATE (Y/N) GW WW SW SOIL
 SLUDGE OTHER
 BOTTLE TYPE **4-oz** CODE: A = NONE, B = HNO₃, C = H₂SO₄, D = NaOH, E = HCL, F = Ice

FEC LAB. NO.	SAMPLE COLLECTION YEAR:		SAMPLE TAG IDENTIFICATION-DESCRIPTION	TOTAL NO. CONTAINERS
	DATE	TIME		
634164	8/4/98		LR-A1-G4	1
465	↓		-G5	↓
466	↓		-G6	↓
467	↓		-G7	↓
468	↓		-H4	↓
469	↓		-H5	↓

ANALYSES				
1				As, Pb, Benzo(a)pyrene
↓	↓	↓	↓	

24-hr TAT
FAX results to site & office (above)

RELINQUISHED BY: SIGNATURE **Jack Gallagher** DATE **8/4/98** TIME
 RECEIVED BY: SIGNATURE **Chris Allen** DATE **8/9/98** TIME **16:29**
 RELINQUISHED BY: SIGNATURE DATE TIME
 RECEIVED BY: SIGNATURE DATE TIME

RELINQUISHED BY: SIGNATURE DATE TIME
 RECEIVED AT FECL BY: SIGNATURE DATE TIME
 SEAL NO. SEAL INTACT YES NO INITIALS
 SEAL NO. SEAL INTACT YES NO INITIALS
 NOTES: TEMP. ON ARRIVAL



Fire & Environmental Consulting Laboratories, Inc.

One East Complex 1451 East Lansing Drive, Suite 222 East Lansing, MI 48823
Phone (517) 332-0167 Fax (517) 332-6333

August 05, 1998

Attention: Mr. Jack Gallagher

Weston
3 Hawthone PKY Ste. 400
Vernon Hills IL 60061

Analytical Laboratory Report

FECL #(s): AA63392-AA63401

Project: GM

Samples collected by: J. GALLAGHER
Date/Time Submitted: 08/03/98 16:11
PO #: Verbal

FECL #: AA63392

Tag: LR-A1-H6
Date/Time Collected: 08/03/98 10:50
Matrix: Soil
Container(s): 1-4oz Glass
Preservation: Refrigeration/None

FECL #: AA63393

Tag: LR-A1-H7
Date/Time Collected: 08/03/98 10:55
Matrix: Soil
Container(s): 1-4oz Glass
Preservation: Refrigeration/None

FECL #: AA63394

Tag: LR-A1-H8
Date/Time Collected: 08/03/98 11:00
Matrix: Soil
Container(s): 1-4oz Glass
Preservation: Refrigeration/None



Analytical Laboratory Report
Weston
August 05, 1998

FECL #: AA63395
Tag: LR-A1-H9
Date/Time Collected: 08/03/98 11:05
Matrix: Soil
Container(s): 1-4oz Glass
Preservation: Refrigeration/None

FECL #: AA63396
Tag: LR-A1-G9
Date/Time Collected: 08/03/98 13:45
Matrix: Soil
Container(s): 1-4oz Glass
Preservation: Refrigeration/None

FECL #: AA63397
Tag: LR-A1-SW6
Date/Time Collected: 08/03/98 13:55
Matrix: Soil
Container(s): 1-4oz Glass
Preservation: Refrigeration/None

FECL #: AA63398
Tag: LR-A1-SW7
Date/Time Collected: 08/03/98 14:10
Matrix: Soil
Container(s): 1-4oz Glass
Preservation: Refrigeration/None

FECL #: AA63399
Tag: LR-A1-SW8
Date/Time Collected: 08/03/98 14:20
Matrix: Soil
Container(s): 1-4oz Glass
Preservation: Refrigeration/None

FECL #: AA63400
Tag: LR-A1-SW13
Date/Time Collected: 08/03/98 14:30
Matrix: Soil
Container(s): 1-4oz Glass
Preservation: Refrigeration/None



Analytical Laboratory Report
Weston
August 05, 1998

FECL #: AA63401
Tag: LR-A1-G8
Date/Time Collected: 08/03/98 14:45
Matrix: Soil
Container(s): 1-4oz Glass
Preservation: Refrigeration/None



Analytical Laboratory Report
Weston
August 05, 1998

FECL #: AA63392
Tag: LR-A1-H6
Date/Time Collected: 08/03/98 10:50
Matrix: Soil

Analysis	Results	Units	MDL	Method	Analyst	Date Run
Metals						
Arsenic	4.23	mg/kg	0.50	6020	P R	08/04/98
Lead	11.2	mg/kg	1.0	6020	P R	08/04/98
Organics						
Benzo(a)pyrene	Not detected	mg/kg	0.33	8270	JB	08/04/98
Pna extraction	Completed				JKB	08/03/98

FECL #: AA63393
Tag: LR-A1-H7
Date/Time Collected: 08/03/98 10:55
Matrix: Soil

Analysis	Results	Units	MDL	Method	Analyst	Date Run
Metals						
Arsenic	3.94	mg/kg	0.50	6020	P R	08/04/98
Lead	8.8	mg/kg	1.0	6020	P R	08/04/98
Organics						
Benzo(a)pyrene	Not detected	mg/kg	0.33	8270	JB	08/04/98
Pna extraction	Completed				JKB	08/03/98

FECL #: AA63394
Tag: LR-A1-H8
Date/Time Collected: 08/03/98 11:00
Matrix: Soil

Analysis	Results	Units	MDL	Method	Analyst	Date Run
Metals						
Arsenic	1.59	mg/kg	0.50	6020	P R	08/04/98
Lead	9.5	mg/kg	1.0	6020	P R	08/04/98



Analytical Laboratory Report
Weston
August 05, 1998

FECL #: AA63394 (Continued)
Tag: LR-A1-H8
Date/Time Collected: 08/03/98 11:00
Matrix: Soil

Analysis	Results	Units	MDL	Method	Analyst	Date Run
<i>Organics</i>						
Benzo(a)pyrene	Not detected	mg/kg	0.33	8270	JB	08/04/98
Pna extraction	Completed				JKB	08/03/98

FECL #: AA63395
Tag: LR-A1-H9
Date/Time Collected: 08/03/98 11:05
Matrix: Soil

Analysis	Results	Units	MDL	Method	Analyst	Date Run
<i>Metals</i>						
Arsenic	3.92	mg/kg	0.50	6020	P R	08/04/98
Lead	5.4	mg/kg	1.0	6020	P R	08/04/98
<i>Organics</i>						
Benzo(a)pyrene	Not detected	mg/kg	0.33	8270	JB	08/04/98
Pna extraction	Completed				JKB	08/03/98

FECL #: AA63396
Tag: LR-A1-G9
Date/Time Collected: 08/03/98 13:45
Matrix: Soil

Analysis	Results	Units	MDL	Method	Analyst	Date Run
<i>Metals</i>						
Arsenic	4.64	mg/kg	0.50	6020	P R	08/04/98
Lead	16.0	mg/kg	1.0	6020	P R	08/04/98
<i>Organics</i>						
Benzo(a)pyrene	Not detected	mg/kg	0.33	8270	JB	08/04/98
Pna extraction	Completed				JKB	08/03/98



Analytical Laboratory Report
Weston
August 05, 1998

FECL #: AA63397
Tag: LR-A1-SW6
Date/Time Collected: 08/03/98 13:55
Matrix: Soil

Analysis	Results	Units	MDL	Method	Analyst	Date Run
Metals						
Arsenic	0.87	mg/kg	0.50	6020	P R	08/04/98
Lead	9.9	mg/kg	1.0	6020	P R	08/04/98
Organics						
Benzo(a)pyrene	Not detected	mg/kg	0.33	8270	JB	08/04/98
Pna extraction	Completed				JKB	08/03/98

FECL #: AA63398
Tag: LR-A1-SW7
Date/Time Collected: 08/03/98 14:10
Matrix: Soil

Analysis	Results	Units	MDL	Method	Analyst	Date Run
Metals						
Arsenic	3.31	mg/kg	0.50	6020	P R	08/04/98
Lead	139	mg/kg	1.0	6020	P R	08/04/98
Organics						
Benzo(a)pyrene	Not detected	mg/kg	1	8270	JB	08/04/98
Pna extraction	Completed				JKB	08/03/98

FECL #: AA63399
Tag: LR-A1-SW8
Date/Time Collected: 08/03/98 14:20
Matrix: Soil

Analysis	Results	Units	MDL	Method	Analyst	Date Run
Metals						
Arsenic	1.59	mg/kg	0.50	6020	P R	08/04/98
Lead	18.3	mg/kg	1.0	6020	P R	08/04/98



Analytical Laboratory Report
Weston
August 05, 1998

FECL #: AA63399 (Continued)
Tag: LR-A1-SW8
Date/Time Collected: 08/03/98 14:20
Matrix: Soil

Analysis	Results	Units	MDL	Method	Analyst	Date Run
<i>Organics</i>						
Benzo(a)pyrene	Not detected	mg/kg	0.33	8270	JB	08/04/98
Pna extraction	Completed				JKB	08/03/98

FECL #: AA63400
Tag: LR-A1-SW13
Date/Time Collected: 08/03/98 14:30
Matrix: Soil

Analysis	Results	Units	MDL	Method	Analyst	Date Run
<i>Metals</i>						
Arsenic	1.62	mg/kg	0.50	6020	P R	08/04/98
Lead	7.2	mg/kg	1.0	6020	P R	08/04/98
<i>Organics</i>						
Benzo(a)pyrene	Not detected	mg/kg	0.33	8270	JB	08/04/98
Pna extraction	Completed				JKB	08/03/98

FECL #: AA63401
Tag: LR-A1-G8
Date/Time Collected: 08/03/98 14:45
Matrix: Soil

Analysis	Results	Units	MDL	Method	Analyst	Date Run
<i>Metals</i>						
Arsenic	3.87	mg/kg	0.50	6020	P R	08/04/98
Lead	9.4	mg/kg	1.0	6020	P R	08/04/98
<i>Organics</i>						
Benzo(a)pyrene	Not detected	mg/kg	0.33	8270	JB	08/04/98
Pna extraction	Completed				JKB	08/03/98



Analytical Laboratory Report
Weston
August 05, 1998

Note: Methods may be modified for improved performance.
Results reported on a dry weight basis, where applicable.
Results relate only to items tested.
Report shall not be reproduced except in full, without the written approval of FECL.

Violetta F. Murshak

Violetta F. Murshak
Laboratory Director



Fire & Environmental Consulting Laboratories, Inc.

One East Complex 1451 East Lansing Drive, Suite 222 East Lansing, MI 48823
Phone (517) 332-0167 Fax (517) 332-6333

July 30, 1998

Attention: Mr. Jack Gallagher

Weston
3 Hawthorn PKY Ste. 400
Vernon Hills, IL 60061

Analytical Laboratory Report

FECL #(s): AA63079-AA63087

Project: GM

Samples collected by: J. GALLAGHER
Date/Time Submitted: 07/29/98 14:30
PO #: Verbal

FECL #: AA63079

Tag: LR-A1-J2
Date/Time Collected: 07/29/98 10:30
Matrix: Soil
Container(s): 1-4oz Glass
Preservation: Refrigeration/None

FECL #: AA63080

Tag: LR-A1-J3
Date/Time Collected: 07/29/98 10:35
Matrix: Soil
Container(s): 1-4oz Glass
Preservation: Refrigeration/None

FECL #: AA63081

Tag: LR-A1-J4
Date/Time Collected: 07/29/98 10:45
Matrix: Soil
Container(s): 1-4oz Glass
Preservation: Refrigeration/None



Analytical Laboratory Report
Weston
July 30, 1998

FECL #: AA63082

Tag: LR-A1-I2
Date/Time Collected: 07/29/98 10:55
Matrix: Soil
Container(s): 1-4oz Glass
Preservation: Refrigeration/None

FECL #: AA63083

Tag: LR-A1-I3
Date/Time Collected: 07/29/98 11:00
Matrix: Soil
Container(s): 1-4oz Glass
Preservation: Refrigeration/None

FECL #: AA63084

Tag: LR-A1-I4
Date/Time Collected: 07/29/98 11:05
Matrix: Soil
Container(s): 1-4oz Glass
Preservation: Refrigeration/None

FECL #: AA63085

Tag: LR-A1-I5
Date/Time Collected: 07/29/98 11:15
Matrix: Soil
Container(s): 1-4oz Glass
Preservation: Refrigeration/None

FECL #: AA63086

Tag: LR-A1-I6
Date/Time Collected: 07/29/98 11:25
Matrix: Soil
Container(s): 1-4oz Glass
Preservation: Refrigeration/None

FECL #: AA63087

Tag: LR-A1-I7
Date/Time Collected: 07/29/98 11:35
Matrix: Soil
Container(s): 1-4oz Glass
Preservation: Refrigeration/None



Analytical Laboratory Report
Weston
July 30, 1998

FECL #: AA63079
Tag: LR-A1-J2
Date/Time Collected: 07/29/98 10:30
Matrix: Soil

Analysis	Results	Units	MDL	Method	Analyst	Date Run
Metals						
Arsenic	6.09	mg/kg	0.50	6020	P R	07/30/98
Lead	24.1	mg/kg	1.0	6020	P R	07/30/98
Organics						
Benzo(a)pyrene	Not detected	mg/kg	0.33	8270	JB	07/29/98
PNA Extraction	Completed				JKB	07/29/98

FECL #: AA63080
Tag: LR-A1-J3
Date/Time Collected: 07/29/98 10:35
Matrix: Soil

Analysis	Results	Units	MDL	Method	Analyst	Date Run
Metals						
Arsenic	8.17	mg/kg	0.50	6020	P R	07/30/98
Lead	7.2	mg/kg	1.0	6020	P R	07/30/98
Organics						
Benzo(a)pyrene	Not detected	mg/kg	0.33	8270	JB	07/29/98
PNA Extraction	Completed				JKB	07/29/98

FECL #: AA63081
Tag: LR-A1-J4
Date/Time Collected: 07/29/98 10:45
Matrix: Soil

Analysis	Results	Units	MDL	Method	Analyst	Date Run
Metals						
Arsenic	5.78	mg/kg	0.50	6020	P R	07/30/98
Lead	8.6	mg/kg	1.0	6020	P R	07/30/98



Analytical Laboratory Report
 Weston
 July 30, 1998

FECL #: AA63081 (Continued)
Tag: LR-A1-J4
Date/Time Collected: 07/29/98 10:45
Matrix: Soil

Analysis	Results	Units	MDL	Method	Analyst	Date Run
<i>Organics</i>						
Benzo(a)pyrene	Not detected	mg/kg	0.33	8270	JB	07/29/98
PNA Extraction	Completed				JKB	07/29/98

FECL #: AA63082
Tag: LR-A1-I2
Date/Time Collected: 07/29/98 10:55
Matrix: Soil

Analysis	Results	Units	MDL	Method	Analyst	Date Run
<i>Metals</i>						
Arsenic	8.87	mg/kg	0.50	6020	P R	07/30/98
Lead	6.3	mg/kg	1.0	6020	P R	07/30/98
<i>Organics</i>						
Benzo(a)pyrene	Not detected	mg/kg	0.33	8270	JB	07/29/98
PNA Extraction	Completed				JKB	07/29/98

FECL #: AA63083
Tag: LR-A1-I3
Date/Time Collected: 07/29/98 11:00
Matrix: Soil

Analysis	Results	Units	MDL	Method	Analyst	Date Run
<i>Metals</i>						
Arsenic	5.87	mg/kg	0.50	6020	P R	07/30/98
Lead	13.4	mg/kg	1.0	6020	P R	07/30/98
<i>Organics</i>						
Benzo(a)pyrene	Not detected	mg/kg	0.33	8270	JB	07/29/98
PNA Extraction	Completed				JKB	07/29/98



Analytical Laboratory Report
Weston
July 30, 1998

FECL #: AA63084
Tag: LR-A1-I4
Date/Time Collected: 07/29/98 11:05
Matrix: Soil

Analysis	Results	Units	MDL	Method	Analyst	Date Run
Metals						
Arsenic	7.77	mg/kg	0.50	6020	P R	07/30/98
Lead	7.0	mg/kg	1.0	6020	P R	07/30/98
Organics						
Benzo(a)pyrene	Not detected	mg/kg	0.33	8270	JB	07/29/98
PNA Extraction	Completed				JKB	07/29/98

FECL #: AA63085
Tag: LR-A1-I5
Date/Time Collected: 07/29/98 11:15
Matrix: Soil

Analysis	Results	Units	MDL	Method	Analyst	Date Run
Metals						
Arsenic	6.09	mg/kg	0.50	6020	P R	07/30/98
Lead	6.5	mg/kg	1.0	6020	P R	07/30/98
Organics						
Benzo(a)pyrene	Not detected	mg/kg	0.33	8270	JB	07/29/98
PNA Extraction	Completed				JKB	07/29/98

FECL #: AA63086
Tag: LR-A1-I6
Date/Time Collected: 07/29/98 11:25
Matrix: Soil

Analysis	Results	Units	MDL	Method	Analyst	Date Run
Metals						
Arsenic	5.89	mg/kg	0.50	6020	P R	07/30/98
Lead	5.8	mg/kg	1.0	6020	P R	07/30/98



Analytical Laboratory Report
 Weston
 July 30, 1998

FECL #: AA63086 (Continued)
Tag: LR-A1-I6
Date/Time Collected: 07/29/98 11:25
Matrix: Soil

Analysis	Results	Units	MDL	Method	Analyst	Date Run
<i>Organics</i>						
Benzo(a)pyrene	Not detected	mg/kg	0.33	8270	JB	07/29/98
PNA Extraction	Completed				JKB	07/29/98

FECL #: AA63087
Tag: LR-A1-I7
Date/Time Collected: 07/29/98 11:35
Matrix: Soil

Analysis	Results	Units	MDL	Method	Analyst	Date Run
<i>Metals</i>						
Arsenic	5.00	mg/kg	0.50	6020	P R	07/30/98
Lead	5.7	mg/kg	1.0	6020	P R	07/30/98
<i>Organics</i>						
Benzo(a)pyrene	Not detected	mg/kg	0.33	8270	JB	07/29/98
PNA Extraction	Completed				JKB	07/29/98

Note: Methods may be modified for improved performance.
 Results reported on a dry weight basis, where applicable.
 Results relate only to items tested.
 Report shall not be reproduced except in full, without the written approval of FECL.

Violetta F. Murshak

Violetta F. Murshak
Laboratory Director



Fire & Environmental Consulting Laboratories, Inc.

One East Complex 1451 East Lansing Drive, Suite 222 East Lansing, MI 48823
Phone (517) 332-0167 Fax (517) 332-6333

July 16, 1998

Attention: Mr. Jack Gallagher

Weston
3 Hawthron Pky.
Vernon Hills, IL 60061

Analytical Laboratory Report

FECL #(s): AA62416-AA62420

Project: GM

Samples collected by: J. GALLAGHER
Date/Time Submitted: 07/15/98 15:30
PO #: Verbal

FECL #: AA62416

Tag: LR-A1-SW1
Date/Time Collected: 07/15/98 11:05
Matrix: Soil
Container(s): 1-4oz Glass
Preservation: Refrigeration/None

FECL #: AA62417

Tag: LR-A1-SW2
Date/Time Collected: 07/15/98 11:10
Matrix: Soil
Container(s): 1-4oz Glass
Preservation: Refrigeration/None

FECL #: AA62418

Tag: LR-A1-SW3
Date/Time Collected: 07/15/98 11:15
Matrix: Soil
Container(s): 1-4oz Glass
Preservation: Refrigeration/None



Analytical Laboratory Report
Weston
July 16, 1998

FECL #: AA62419
Tag: LR-A1-SW4
Date/Time Collected: 07/15/98 11:20
Matrix: Soil
Container(s): 1-4oz Glass
Preservation: Refrigeration/None

FECL #: AA62420
Tag: LR-A1-SW5
Date/Time Collected: 07/15/98 11:25
Matrix: Soil
Container(s): 1-4oz Glass
Preservation: Refrigeration/None



Analytical Laboratory Report
Weston
July 16, 1998

FECL #: AA62416
Tag: LR-A1-SW1
Date/Time Collected: 07/15/98 11:05
Matrix: Soil

Analysis	Results	Units	MDL	Method	Analyst	Date Run
<i>Metals</i>						
Arsenic	7.83	mg/kg	0.50	6020	P R	07/15/98
Lead	8.7	mg/kg	1.0	6020	P R	07/15/98
<i>Organics</i>						
Benzo(a)pyrene	Not detected	mg/kg	0.33	8270	JB	07/16/98

FECL #: AA62417
Tag: LR-A1-SW2
Date/Time Collected: 07/15/98 11:10
Matrix: Soil

Analysis	Results	Units	MDL	Method	Analyst	Date Run
<i>Metals</i>						
Arsenic	3.64	mg/kg	0.50	6020	P R	07/15/98
Lead	6.8	mg/kg	1.0	6020	P R	07/15/98
<i>Organics</i>						
Benzo(a)pyrene	Not detected	mg/kg	0.33	8270	JB	07/16/98

FECL #: AA62418
Tag: LR-A1-SW3
Date/Time Collected: 07/15/98 11:15
Matrix: Soil

Analysis	Results	Units	MDL	Method	Analyst	Date Run
<i>Metals</i>						
Arsenic	6.16	mg/kg	0.50	6020	P R	07/15/98
Lead	6.3	mg/kg	1.0	6020	P R	07/15/98
<i>Organics</i>						
Benzo(a)pyrene	Not detected	mg/kg	0.33	8270	JB	07/16/98



Analytical Laboratory Report
Weston
July 16, 1998

FECL #: AA62419
Tag: LR-A1-SW4
Date/Time Collected: 07/15/98 11:20
Matrix: Soil

Analysis	Results	Units	MDL	Method	Analyst	Date Run
Metals						
Arsenic	10.8	mg/kg	0.50	6020	P R	07/15/98
Lead	35.7	mg/kg	1.0	6020	P R	07/15/98
Organics						
Benzo(a)pyrene	Not detected	mg/kg	0.33	8270	JB	07/16/98

FECL #: AA62420
Tag: LR-A1-SW5
Date/Time Collected: 07/15/98 11:25
Matrix: Soil

Analysis	Results	Units	MDL	Method	Analyst	Date Run
Metals						
Arsenic	8.45	mg/kg	0.50	6020	P R	07/15/98
Lead	6.5	mg/kg	1.0	6020	P R	07/15/98
Organics						
Benzo(a)pyrene	Not detected	mg/kg	0.33	8270	JB	07/16/98

Note: Methods may be modified for improved performance.
Results reported on a dry weight basis, where applicable.
Results relate only to items tested.
Report shall not be reproduced except in full, without the written approval of FECL.

Violetta F. Murshak
Violetta F. Murshak
Laboratory Director

INVOICE TO

CHAIN OF CUSTODY RECORD

REPORT TO

NAME Bob Metcalf
 ADDRESS _____
 CITY _____ STATE _____ ZIP CODE _____
 P.O. NO. _____ PHONE NO. _____ FAX NO. _____

NAME Sack Gallagher
 ADDRESS 3 Hawthorn Parkway
 CITY Vernon Hills STATE IL ZIP CODE 60061
 PHONE NO. (810) 232-733-3029 FAX NO. (810) 232-9625 Hotel office (847) 918-4055

PROJECT NO. _____ CLIENT GM
 SAMPLER (SIGNATURE) [Signature] SAMPLER - PLEASE PRINT NAME Sack Gallagher
 AFFILIATION WESTON

PRESERVATIVE CODE _____
 REFRIGERATE (Y/N) _____
 BOTTLE TYPE _____
 SAMPLE TYPE: GW WW SW SOIL
 SLUDGE OTHER _____
 CODE: A = NONE, B = HNO₃, C = H₂SO₄, D = NaOH, E = HCL, F = _____

FEC LAB. NO.	SAMPLE COLLECTION YEAR:		SAMPLE TAG IDENTIFICATION-DESCRIPTION	TOTAL NO. CONTAINERS
	DATE	TIME		
<u>62416</u>	<u>7/15/98</u>	<u>1105</u>	<u>LR-A1-SW1</u>	<u>1</u>
<u>62417</u>	↓	<u>1110</u>	↓ <u>SW2</u>	↓
<u>62418</u>	↓	<u>1115</u>	↓ <u>SW3</u>	↓
<u>62419</u>	↓	<u>1120</u>	↓ <u>SW4</u>	↓
<u>62420</u>	↓	<u>1125</u>	↓ <u>SW5</u>	↓

4-02

ANALYSES

1 ↓ Pb, As, Benzo (a) pyrene

↓ ↓ ↓

2" HR R-5

RELINQUISHED BY: SIGNATURE [Signature] DATE 7/15/98 TIME 1430
 RECEIVED BY: SIGNATURE [Signature] DATE 7/15/98 TIME 2:30
 RELINQUISHED BY: SIGNATURE [Signature] DATE 7/15/98 TIME 3:10
 RECEIVED BY: SIGNATURE _____ DATE _____ TIME _____

RELINQUISHED BY: SIGNATURE _____ DATE _____ TIME _____
 RECEIVED AT FECL BY: SIGNATURE _____ DATE _____ TIME _____
 SEAL NO. _____ SEAL INTACT YES NO INITIALS _____
 SEAL NO. _____ SEAL INTACT YES NO INITIALS _____
 NOTES: TEMP. ON ARRIVAL 1 hr



Fire & Environmental Consulting Laboratories, Inc.

One East Complex 1451 East Lansing Drive, Suite 222 East Lansing, MI 48823
Phone (517) 332-0167 Fax (517) 332-6333

July 13, 1998

Attention: Mr. Jack Gallagher

Roy F. Weston
3 Hawthorne Parkway Ste. 400
Vernon Hills, IL 60061

Analytical Laboratory Report

FECL #(s): AA62290-AA62309

Project: GM

Samples collected by: J. GALLAGHER
Date/Time Submitted: 07/10/98 17:00
PO #: Verbal

FECL #: AA62290

Tag: LR-A2-A25
Date/Time Collected: 07/10/98 12:20
Matrix: Soil
Container(s): 1-Glass
Preservation: Refrigeration/None

FECL #: AA62291

Tag: LR-A2-A3S
Date/Time Collected: 07/10/98 12:25
Matrix: Soil
Container(s): 1-Glass
Preservation: Refrigeration/None

FECL #: AA62292

Tag: LR-A2-A4S
Date/Time Collected: 07/10/98 12:30
Matrix: Soil
Container(s): 1-Glass
Preservation: Refrigeration/None



Analytical Laboratory Report
Roy F. Weston
July 13, 1998

FECL #: AA62293
Tag: LR-A2-A5S
Date/Time Collected: 07/10/98 12:35
Matrix: Soil
Container(s): 1-Glass
Preservation: Refrigeration/None

FECL #: AA62294
Tag: LR-A2-B1S
Date/Time Collected: 07/10/98 12:40
Matrix: Soil
Container(s): 1-Glass
Preservation: Refrigeration/None

FECL #: AA62295
Tag: LR-A2-C1S
Date/Time Collected: 07/10/98 12:45
Matrix: Soil
Container(s): 1-Glass
Preservation: Refrigeration/None

FECL #: AA62296
Tag: LR-A2-F4S
Date/Time Collected: 07/10/98 12:50
Matrix: Soil
Container(s): 1-Glass
Preservation: Refrigeration/None

FECL #: AA62297
Tag: LR-A2-F5S
Date/Time Collected: 07/10/98 12:55
Matrix: Soil
Container(s): 1-Glass
Preservation: Refrigeration/None

FECL #: AA62298
Tag: LR-A2-B2F
Date/Time Collected: 07/10/98 13:00
Matrix: Soil
Container(s): 1-Glass
Preservation: Refrigeration/None



Analytical Laboratory Report
Roy F. Weston
July 13, 1998

FECL #: AA62299
Tag: LR-A2-B3F
Date/Time Collected: 07/10/98 13:05
Matrix: Soil
Container(s): 1-Glass
Preservation: Refrigeration/None

FECL #: AA62300
Tag: LR-A2-B4F
Date/Time Collected: 07/10/98 13:10
Matrix: Soil
Container(s): 1-Glass
Preservation: Refrigeration/None

FECL #: AA62301
Tag: LR-A2-B5F
Date/Time Collected: 07/10/98 13:20
Matrix: Soil
Container(s): 1-Glass
Preservation: Refrigeration/None

FECL #: AA62302
Tag: LR-A2-C2F
Date/Time Collected: 07/10/98 13:25
Matrix: Soil
Container(s): 1-Glass
Preservation: Refrigeration/None

FECL #: AA62303
Tag: LR-A2-C3F
Date/Time Collected: 07/10/98 13:30
Matrix: Soil
Container(s): 1-Glass
Preservation: Refrigeration/None

FECL #: AA62304
Tag: LR-A2-C4F
Date/Time Collected: 07/10/98 13:35
Matrix: Soil
Container(s): 1-Glass
Preservation: Refrigeration/None



Analytical Laboratory Report
Roy F. Weston
July 13, 1998

FECL #: AA62305
Tag: LR-A2-C5F
Date/Time Collected: 07/10/98 13:40
Matrix: Soil
Container(s): 1-Glass
Preservation: Refrigeration/None

FECL #: AA62306
Tag: LR-A2-D4F
Date/Time Collected: 07/10/98 13:45
Matrix: Soil
Container(s): 1-Glass
Preservation: Refrigeration/None

FECL #: AA62307
Tag: LR-A2-D5F
Date/Time Collected: 07/10/98 13:50
Matrix: Soil
Container(s): 1-Glass
Preservation: Refrigeration/None

FECL #: AA62308
Tag: LR-A2-E4F
Date/Time Collected: 07/10/98 13:55
Matrix: Soil
Container(s): 1-Glass
Preservation: Refrigeration/None

FECL #: AA62309
Tag: LR-A2-E5F
Date/Time Collected: 07/10/98 14:00
Matrix: Soil
Container(s): 1-Glass
Preservation: Refrigeration/None



Analytical Laboratory Report
Roy F. Weston
July 13, 1998

FECL #: AA62290
Tag: LR-A2-A25
Date/Time Collected: 07/10/98 12:20
Matrix: Soil

Analysis	Results	Units	MDL	Method	Analyst	Date Run
<i>Organics</i>						
Benzo(a)pyrene	Not detected	mg/kg	0.33	8270	SMP	07/12/98
PNA Extraction	Completed				MVM	07/11/98

FECL #: AA62291
Tag: LR-A2-A3S
Date/Time Collected: 07/10/98 12:25
Matrix: Soil

Analysis	Results	Units	MDL	Method	Analyst	Date Run
<i>Organics</i>						
Benzo(a)pyrene	Not detected	mg/kg	0.33	8270	SMP	07/12/98
PNA Extraction	Completed				MVM	07/11/98

FECL #: AA62292
Tag: LR-A2-A4S
Date/Time Collected: 07/10/98 12:30
Matrix: Soil

Analysis	Results	Units	MDL	Method	Analyst	Date Run
<i>Organics</i>						
Benzo(a)pyrene	Not detected	mg/kg	0.33	8270	SMP	07/12/98
PNA Extraction	Completed				MVM	07/11/98



Analytical Laboratory Report
Roy F. Weston
July 13, 1998

FECL #: AA62293
Tag: LR-A2-A5S
Date/Time Collected: 07/10/98 12:35
Matrix: Soil

Analysis	Results	Units	MDL	Method	Analyst	Date Run
<i>Organics</i>						
Benzo(a)pyrene	Not detected	mg/kg	* 1	8270	SMP	07/12/98
PNA Extraction	Completed				MVM	07/11/98

FECL #: AA62294
Tag: LR-A2-B1S
Date/Time Collected: 07/10/98 12:40
Matrix: Soil

Analysis	Results	Units	MDL	Method	Analyst	Date Run
<i>Organics</i>						
Benzo(a)pyrene	Not detected	mg/kg	0.33	8270	SMP	07/12/98
PNA Extraction	Completed				MVM	07/11/98

FECL #: AA62295
Tag: LR-A2-C1S
Date/Time Collected: 07/10/98 12:45
Matrix: Soil

Analysis	Results	Units	MDL	Method	Analyst	Date Run
<i>Organics</i>						
Benzo(a)pyrene	Not detected	mg/kg	0.33	8270	SMP	07/12/98
PNA Extraction	Completed				MVM	07/11/98

* Estimated due to matrix interference.



Analytical Laboratory Report
Roy F. Weston
July 13, 1998

FECL #: AA62296
Tag: LR-A2-F4S
Date/Time Collected: 07/10/98 12:50
Matrix: Soil

Analysis	Results	Units	MDL	Method	Analyst	Date Run
<i>Organics</i>						
Benzo(a)pyrene	Not detected	mg/kg	0.33	8270	SMP	07/12/98
PNA Extraction	Completed				MVM	07/11/98

FECL #: AA62297
Tag: LR-A2-F5S
Date/Time Collected: 07/10/98 12:55
Matrix: Soil

Analysis	Results	Units	MDL	Method	Analyst	Date Run
<i>Organics</i>						
Benzo(a)pyrene	Not detected	mg/kg	0.33	8270	SMP	07/12/98
PNA Extraction	Completed				MVM	07/11/98

FECL #: AA62298
Tag: LR-A2-B2F
Date/Time Collected: 07/10/98 13:00
Matrix: Soil

Analysis	Results	Units	MDL	Method	Analyst	Date Run
<i>Organics</i>						
Benzo(a)pyrene	Not detected	mg/kg	0.33	8270	SMP	07/12/98
PNA Extraction	Completed				MVM	07/11/98



Analytical Laboratory Report
Roy F. Weston
July 13, 1998

FECL #: AA62299
Tag: LR-A2-B3F
Date/Time Collected: 07/10/98 13:05
Matrix: Soil

Analysis	Results	Units	MDL	Method	Analyst	Date Run
<i>Organics</i>						
Benzo(a)pyrene PNA Extraction	Not detected Completed	mg/kg	0.33	8270	SMP MVM	07/12/98 07/11/98

FECL #: AA62300
Tag: LR-A2-B4F
Date/Time Collected: 07/10/98 13:10
Matrix: Soil

Analysis	Results	Units	MDL	Method	Analyst	Date Run
<i>Organics</i>						
Benzo(a)pyrene PNA Extraction	Not detected Completed	mg/kg	0.33	8270	SMP MVM	07/12/98 07/11/98

FECL #: AA62301
Tag: LR-A2-B5F
Date/Time Collected: 07/10/98 13:20
Matrix: Soil

Analysis	Results	Units	MDL	Method	Analyst	Date Run
<i>Organics</i>						
Benzo(a)pyrene PNA Extraction	Not detected Completed	mg/kg	0.33	8270	SMP MVM	07/12/98 07/11/98



Analytical Laboratory Report
 Roy F. Weston
 July 13, 1998

FECL #: AA62302
Tag: LR-A2-C2F
Date/Time Collected: 07/10/98 13:25
Matrix: Soil

Analysis	Results	Units	MDL	Method	Analyst	Date Run
<i>Organics</i>						
Benzo(a)pyrene	Not detected	mg/kg	0.33	8270	SMP	07/12/98
PNA Extraction	Completed				MVM	07/11/98

FECL #: AA62303
Tag: LR-A2-C3F
Date/Time Collected: 07/10/98 13:30
Matrix: Soil

Analysis	Results	Units	MDL	Method	Analyst	Date Run
<i>Organics</i>						
Benzo(a)pyrene	Not detected	mg/kg	0.33	8270	SMP	07/12/98
PNA Extraction	Completed				MVM	07/11/98

FECL #: AA62304
Tag: LR-A2-C4F
Date/Time Collected: 07/10/98 13:35
Matrix: Soil

Analysis	Results	Units	MDL	Method	Analyst	Date Run
<i>Organics</i>						
Benzo(a)pyrene	Not detected	mg/kg	0.33	8270	SMP	07/12/98
PNA Extraction	Completed				MVM	07/11/98



Analytical Laboratory Report
Roy F. Weston
July 13, 1998

FECL #: AA62305
Tag: LR-A2-C5F
Date/Time Collected: 07/10/98 13:40
Matrix: Soil

Analysis	Results	Units	MDL	Method	Analyst	Date Run
<i>Organics</i>						
Benzo(a)pyrene	Not detected	mg/kg	0.33	8270	SMP	07/12/98
PNA Extraction	Completed				MVM	07/11/98

FECL #: AA62306
Tag: LR-A2-D4F
Date/Time Collected: 07/10/98 13:45
Matrix: Soil

Analysis	Results	Units	MDL	Method	Analyst	Date Run
<i>Organics</i>						
Benzo(a)pyrene	Not detected	mg/kg	0.33	8270	SMP	07/12/98
PNA Extraction	Completed				MVM	07/11/98

FECL #: AA62307
Tag: LR-A2-D5F
Date/Time Collected: 07/10/98 13:50
Matrix: Soil

Analysis	Results	Units	MDL	Method	Analyst	Date Run
<i>Organics</i>						
Benzo(a)pyrene	Not detected	mg/kg	0.33	8270	SMP	07/12/98
PNA Extraction	Completed				MVM	07/11/98



Analytical Laboratory Report
 Roy F. Weston
 July 13, 1998

FECL #: AA62308
Tag: LR-A2-E4F
Date/Time Collected: 07/10/98 13:55
Matrix: Soil

Analysis	Results	Units	MDL	Method	Analyst	Date Run
<i>Organics</i>						
Benzo(a)pyrene	Not detected	mg/kg	0.33	8270	SMP	07/12/98
PNA Extraction	Completed				MVM	07/11/98

FECL #: AA62309
Tag: LR-A2-E5F
Date/Time Collected: 07/10/98 14:00
Matrix: Soil

Analysis	Results	Units	MDL	Method	Analyst	Date Run
<i>Organics</i>						
Benzo(a)pyrene	Not detected	mg/kg	0.33	8270	SMP	07/12/98
PNA Extraction	Completed				MVM	07/11/98

Note: Methods may be modified for improved performance.
 Results reported on a dry weight basis, where applicable.
 Results relate only to items tested.
 Report shall not be reproduced except in full, without the written approval of FECL.

Violetta F. Murshak
Violetta F. Murshak
Laboratory Director



Fire & Environmental Consulting Laboratories, Inc.

One East Complex 1451 East Lansing Dr., Suite 222 East Lansing, MI 48823 (517) 332-0167 FAX (517) 332-6333
Indianapolis (317) 577-8087

INVOICE TO

NAME Bob Metcalf
 ADDRESS _____
 CITY _____ STATE _____ ZIP CODE _____
 P.O. NO. _____ PHONE NO. _____ FAX NO. _____

CHAIN OF CUSTODY RECORD

REPORT TO

NAME Jack Gallagher / Weston
 ADDRESS 3 Hawthorn Parkway Ste 400
 CITY Vernon Hills STATE IL ZIP CODE 60061
 PHONE NO. (810) 733-3029 FAX NO. Hotel (810) 232-9635 / Office (847) 918-4055

PROJECT NO. _____ CLIENT GM
 SAMPLER (SIGNATURE) Jack Gallagher SAMPLER - PLEASE PRINT NAME Jack Gallagher
 AFFILIATION WESTON

PRESERVATIVE CODE F SAMPLE TYPE
 REFRIGERATE (Y/N) _____ GW WW SW SOIL
 SLUDGE OTHER _____
 BOTTLE TYPE _____ CODE: A = NONE
 B = HNO₃
 C = H₂SO₄
 D = NaOH
 E = HCL
 F = Ice

FEC LAB. NO.	SAMPLE COLLECTION YEAR:		SAMPLE TAG IDENTIFICATION-DESCRIPTION	TOTAL NO. CONTAINERS
	DATE	TIME		
22290	7/10/98	1200	LR-A2-A25	1
22291		1235	- A35	
22292		1230	- A45	
22293		1235	- A55	
22294		1240	- B15	
22295		1245	- C15	
			- D15	
			- E15	
			- F25	
			- F35	
22296		1250	- F45	
22297		1255	✓ - F55	
22298		1300	- B2F	
22299		1305	- B3F	
2300	✓	1310	✓ - B4F	✓

ANALYSES	PRESERVATIVE CODE									
	1	2	3	4	5	6	7	8	9	10
<u>Benzo (a) pyrene</u>										

24hr TAT
 FAX to Bobu
 at Office +
 to JB @ Hotel

RELINQUISHED BY: SIGNATURE _____ DATE _____ TIME _____
 RECEIVED BY: SIGNATURE _____ DATE _____ TIME _____
 RELINQUISHED BY: SIGNATURE _____ DATE _____ TIME _____
 RECEIVED BY: SIGNATURE _____ DATE _____ TIME _____

RELINQUISHED BY: SIGNATURE Jack Gallagher DATE 7/10/98 TIME 1700
 RECEIVED AT FEEL BY: SIGNATURE J. Burkin DATE 7/10/98 TIME 1200
 SEAL NO. _____ SEAL INTACT YES NO INITIALS _____ NOTES: TEMP. ON ARRIVAL _____
 SEAL NO. _____ SEAL INTACT YES NO INITIALS _____



Fire & Environmental Consulting Laboratories, Inc.

One East Complex 1451 East Lansing Drive, Suite 222 East Lansing, MI 48823
Phone (517) 332-0167 Fax (517) 332-6333

July 10, 1998

Attention: Mr. Jack Gallagher

Roy F. Weston
3 Hawthorn Parkway Suite 400
Vernon Hills IL 60061

Analytical Laboratory Report

FECL #(s): AA62163-AA62196

Project: Rush analyses

Samples collected by: J. GALLAGHER

Date/Time Submitted: 07/09/98 18:25

PO #: Verbal

FECL #: AA62163

Tag: LR-A2-A65

Date/Time Collected: 07/09/98 10:45

Matrix: Soil

Container(s): 1-4oz. glass

Preservation: Refrigeration/None

FECL #: AA62164

Tag: LR-A2-A7S

Date/Time Collected: 07/09/98 10:50

Matrix: Soil

Container(s): 1-4oz. glass

Preservation: Refrigeration/None

FECL #: AA62165

Tag: LR-A2-A8S

Date/Time Collected: 07/09/98 10:55

Matrix: Soil

Container(s): 1-4oz. glass

Preservation: Refrigeration/None



Analytical Laboratory Report
Roy F. Weston
July 10, 1998

FECL #: AA62166
Tag: LR-A2-A9S
Date/Time Collected: 07/09/98 11:00
Matrix: Soil
Container(s): 1-4oz. glass
Preservation: Refrigeration/None

FECL #: AA62167
Tag: LR-A2-A10S
Date/Time Collected: 07/09/98 11:05
Matrix: Soil
Container(s): 1-4oz. glass
Preservation: Refrigeration/None

FECL #: AA62168
Tag: LR-A2-B11S
Date/Time Collected: 07/09/98 11:10
Matrix: Soil
Container(s): 1-4oz. glass
Preservation: Refrigeration/None

FECL #: AA62169
Tag: LR-A2-C11S
Date/Time Collected: 07/09/98 11:15
Matrix: Soil
Container(s): 1-4oz. glass
Preservation: Refrigeration/None

FECL #: AA62170
Tag: LR-A2-D11S
Date/Time Collected: 07/09/98 11:20
Matrix: Soil
Container(s): 1-4oz. glass
Preservation: Refrigeration/None

FECL #: AA62171
Tag: LR-A2-E11S
Date/Time Collected: 07/09/98 11:25
Matrix: Soil
Container(s): 1-4oz. glass
Preservation: Refrigeration/None



Analytical Laboratory Report
Roy F. Weston
July 10, 1998

FECL #: AA62172
Tag: LR-A2-F6S
Date/Time Collected: 07/09/98 11:30
Matrix: Soil
Container(s): 1-4oz. glass
Preservation: Refrigeration/None

FECL #: AA62173
Tag: LR-A2-F7S
Date/Time Collected: 07/09/98 11:35
Matrix: Soil
Container(s): 1-4oz. glass
Preservation: Refrigeration/None

FECL #: AA62174
Tag: LR-A2-F8S
Date/Time Collected: 07/09/98 11:40
Matrix: Soil
Container(s): 1-4oz. glass
Preservation: Refrigeration/None

FECL #: AA62175
Tag: LR-A2-F9S
Date/Time Collected: 07/09/98 11:45
Matrix: Soil
Container(s): 1-4oz. glass
Preservation: Refrigeration/None

FECL #: AA62176
Tag: LR-A2-F10S
Date/Time Collected: 07/09/98 11:50
Matrix: Soil
Container(s): 1-4oz. glass
Preservation: Refrigeration/None

FECL #: AA62177
Tag: LR-A2-B6F
Date/Time Collected: 07/09/98 13:00
Matrix: Soil
Container(s): 1-4oz. glass
Preservation: Refrigeration/None



Analytical Laboratory Report
Roy F. Weston
July 10, 1998

FECL #: AA62178
Tag: LR-A2-C6F
Date/Time Collected: 07/09/98 13:10
Matrix: Soil
Container(s): 1-4oz. glass
Preservation: Refrigeration/None

FECL #: AA62179
Tag: LR-A2-D6F
Date/Time Collected: 07/09/98 13:20
Matrix: Soil
Container(s): 1-4oz. glass
Preservation: Refrigeration/None

FECL #: AA62180
Tag: LR-A2-E6F
Date/Time Collected: 07/09/98 13:30
Matrix: Soil
Container(s): 1-4oz. glass
Preservation: Refrigeration/None

FECL #: AA62181
Tag: LR-A2-B7F
Date/Time Collected: 07/09/98 13:40
Matrix: Soil
Container(s): 1-4oz. glass
Preservation: Refrigeration/None

FECL #: AA62182
Tag: LR-A2-C7F
Date/Time Collected: 07/09/98 13:50
Matrix: Soil
Container(s): 1-4oz. glass
Preservation: Refrigeration/None

FECL #: AA62183
Tag: LR-A2-D7F
Date/Time Collected: 07/09/98 14:00
Matrix: Soil
Container(s): 1-4oz. glass
Preservation: Refrigeration/None



Analytical Laboratory Report
Roy F. Weston
July 10, 1998

FECL #: AA62184
Tag: LR-A2-E7F
Date/Time Collected: 07/09/98 14:10
Matrix: Soil
Container(s): 1-4oz. glass
Preservation: Refrigeration/None

FECL #: AA62185
Tag: LR-A2-B8F
Date/Time Collected: 07/09/98 14:20
Matrix: Soil
Container(s): 1-4oz. glass
Preservation: Refrigeration/None

FECL #: AA62186
Tag: LR-A2-C8F
Date/Time Collected: 07/09/98 14:30
Matrix: Soil
Container(s): 1-4oz. glass
Preservation: Refrigeration/None

FECL #: AA62187
Tag: LR-A2-D8F
Date/Time Collected: 07/09/98 14:40
Matrix: Soil
Container(s): 1-4oz. glass
Preservation: Refrigeration/None

FECL #: AA62188
Tag: LR-A2-E8F
Date/Time Collected: 07/09/98 14:50
Matrix: Soil
Container(s): 1-4oz. glass
Preservation: Refrigeration/None

FECL #: AA62189
Tag: LR-A2-B9F
Date/Time Collected: 07/09/98 13:05
Matrix: Soil
Container(s): 1-4oz. glass
Preservation: Refrigeration/None



Analytical Laboratory Report
Roy F. Weston
July 10, 1998

FECL #: AA62190
Tag: LR-A2-C9F
Date/Time Collected: 07/09/98 13:15
Matrix: Soil
Container(s): 1-4oz. glass
Preservation: Refrigeration/None

FECL #: AA62191
Tag: LR-A2-D9F
Date/Time Collected: 07/09/98 13:25
Matrix: Soil
Container(s): 1-4oz. glass
Preservation: Refrigeration/None

FECL #: AA62192
Tag: LR-A2-E9F
Date/Time Collected: 07/09/98 13:35
Matrix: Soil
Container(s): 1-4oz. glass
Preservation: Refrigeration/None

FECL #: AA62193
Tag: LR-A2-B10F
Date/Time Collected: 07/09/98 13:45
Matrix: Soil
Container(s): 1-4oz. glass
Preservation: Refrigeration/None

FECL #: AA62194
Tag: LR-A2-C10F
Date/Time Collected: 07/09/98 13:55
Matrix: Soil
Container(s): 1-4oz. glass
Preservation: Refrigeration/None

FECL #: AA62195
Tag: LR-A2-D10F
Date/Time Collected: 07/09/98 12:50
Matrix: Soil
Container(s): 1-4oz. glass
Preservation: Refrigeration/None



Analytical Laboratory Report
Roy F. Weston
July 10, 1998

FECL #: AA62196
Tag: LR-A2-E10F
Date/Time Collected: 07/09/98 12:55
Matrix: Soil
Container(s): 1-4oz. glass
Preservation: Refrigeration/None



Analytical Laboratory Report
Roy F. Weston
July 10, 1998

FECL #: AA62163
Tag: LR-A2-A65
Date/Time Collected: 07/09/98 10:45
Matrix: Soil

Analysis	Results	Units	MDL	Method	Analyst	Date Run
<i>Organics</i>						
Benzo(a)pyrene	Not detected	mg/kg	0.33	8270	JB	07/09/98
PNA Extraction	Completed				JKB	07/09/98

FECL #: AA62164
Tag: LR-A2-A7S
Date/Time Collected: 07/09/98 10:50
Matrix: Soil

Analysis	Results	Units	MDL	Method	Analyst	Date Run
<i>Organics</i>						
Benzo(a)pyrene	Not detected	mg/kg	0.33	8270	JB	07/09/98
PNA Extraction	Completed				JKB	07/09/98

FECL #: AA62165
Tag: LR-A2-A8S
Date/Time Collected: 07/09/98 10:55
Matrix: Soil

Analysis	Results	Units	MDL	Method	Analyst	Date Run
<i>Organics</i>						
Benzo(a)pyrene	Not detected	mg/kg	0.33	8270	JB	07/09/98
PNA Extraction	Completed				JKB	07/09/98



Analytical Laboratory Report
Roy F. Weston
July 10, 1998

FECL #: AA62166
Tag: LR-A2-A9S
Date/Time Collected: 07/09/98 11:00
Matrix: Soil

Analysis	Results	Units	MDL	Method	Analyst	Date Run
<i>Organics</i>						
Benzo(a)pyrene	Not detected	mg/kg	0.33	8270	JB	07/09/98
PNA Extraction	Completed				JKB	07/09/98

FECL #: AA62167
Tag: LR-A2-A10S
Date/Time Collected: 07/09/98 11:05
Matrix: Soil

Analysis	Results	Units	MDL	Method	Analyst	Date Run
<i>Organics</i>						
Benzo(a)pyrene	Not detected	mg/kg	0.33	8270	JB	07/09/98
PNA Extraction	Completed				JKB	07/09/98

FECL #: AA62168
Tag: LR-A2-B11S
Date/Time Collected: 07/09/98 11:10
Matrix: Soil

Analysis	Results	Units	MDL	Method	Analyst	Date Run
<i>Organics</i>						
Benzo(a)pyrene	Not detected	mg/kg	0.33	8270	JB	07/09/98
PNA Extraction	Completed				JKB	07/09/98



Analytical Laboratory Report
Roy F. Weston
July 10, 1998

FECL #: AA62169
Tag: LR-A2-C11S
Date/Time Collected: 07/09/98 11:15
Matrix: Soil

Analysis	Results	Units	MDL	Method	Analyst	Date Run
<i>Organics</i>						
Benzo(a)pyrene	Not detected	mg/kg	0.33	8270	JB	07/09/98
PNA Extraction	Completed				JKB	07/09/98

FECL #: AA62170
Tag: LR-A2-D11S
Date/Time Collected: 07/09/98 11:20
Matrix: Soil

Analysis	Results	Units	MDL	Method	Analyst	Date Run
<i>Organics</i>						
Benzo(a)pyrene	Not detected	mg/kg	0.33	8270	JB	07/09/98
PNA Extraction	Completed				JKB	07/09/98

FECL #: AA62171
Tag: LR-A2-E11S
Date/Time Collected: 07/09/98 11:25
Matrix: Soil

Analysis	Results	Units	MDL	Method	Analyst	Date Run
<i>Organics</i>						
Benzo(a)pyrene	Not detected	mg/kg	0.33	8270	JB	07/09/98
PNA Extraction	Completed				JKB	07/09/98



Analytical Laboratory Report
Roy F. Weston
July 10, 1998

FECL #: AA62172
Tag: LR-A2-F6S
Date/Time Collected: 07/09/98 11:30
Matrix: Soil

Analysis	Results	Units	MDL	Method	Analyst	Date Run
<i>Organics</i>						
Benzo(a)pyrene	Not detected	mg/kg	0.33	8270	JB	07/09/98
PNA Extraction	Completed				JKB	07/09/98

FECL #: AA62173
Tag: LR-A2-F7S
Date/Time Collected: 07/09/98 11:35
Matrix: Soil

Analysis	Results	Units	MDL	Method	Analyst	Date Run
<i>Organics</i>						
Benzo(a)pyrene	Not detected	mg/kg	0.33	8270	JB	07/09/98
PNA Extraction	Completed				JKB	07/09/98

FECL #: AA62174
Tag: LR-A2-F8S
Date/Time Collected: 07/09/98 11:40
Matrix: Soil

Analysis	Results	Units	MDL	Method	Analyst	Date Run
<i>Organics</i>						
Benzo(a)pyrene	Not detected	mg/kg	0.33	8270	JB	07/09/98
PNA Extraction	Completed				JKB	07/09/98



Analytical Laboratory Report
Roy F. Weston
July 10, 1998

FECL #: AA62175
Tag: LR-A2-F9S
Date/Time Collected: 07/09/98 11:45
Matrix: Soil

Analysis	Results	Units	MDL	Method	Analyst	Date Run
<i>Organics</i>						
Benzo(a)pyrene	Not detected	mg/kg	0.33	8270	JB	07/09/98
PNA Extraction	Completed				JKB	07/09/98

FECL #: AA62176
Tag: LR-A2-F10S
Date/Time Collected: 07/09/98 11:50
Matrix: Soil

Analysis	Results	Units	MDL	Method	Analyst	Date Run
<i>Organics</i>						
Benzo(a)pyrene	Not detected	mg/kg	0.33	8270	JB	07/09/98
PNA Extraction	Completed				JKB	07/09/98

FECL #: AA62177
Tag: LR-A2-B6F
Date/Time Collected: 07/09/98 13:00
Matrix: Soil

Analysis	Results	Units	MDL	Method	Analyst	Date Run
<i>Organics</i>						
Benzo(a)pyrene	Not detected	mg/kg	0.33	8270	JB	07/09/98
PNA Extraction	Completed				JKB	07/09/98



Analytical Laboratory Report
Roy F. Weston
July 10, 1998

FECL #: AA62178
Tag: LR-A2-C6F
Date/Time Collected: 07/09/98 13:10
Matrix: Soil

Analysis	Results	Units	MDL	Method	Analyst	Date Run
<i>Organics</i>						
Benzo(a)pyrene	Not detected	mg/kg	0.33	8270	JB	07/09/98
PNA Extraction	Completed				JKB	07/09/98

FECL #: AA62179
Tag: LR-A2-D6F
Date/Time Collected: 07/09/98 13:20
Matrix: Soil

Analysis	Results	Units	MDL	Method	Analyst	Date Run
<i>Organics</i>						
Benzo(a)pyrene	Not detected	mg/kg	0.33	8270	JB	07/09/98
PNA Extraction	Completed				JKB	07/09/98

FECL #: AA62180
Tag: LR-A2-E6F
Date/Time Collected: 07/09/98 13:30
Matrix: Soil

Analysis	Results	Units	MDL	Method	Analyst	Date Run
<i>Organics</i>						
Benzo(a)pyrene	Not detected	mg/kg	0.33	8270	JB	07/09/98
PNA Extraction	Completed				JKB	07/09/98



Analytical Laboratory Report
Roy F. Weston
July 10, 1998

FECL #: AA62181
Tag: LR-A2-B7F
Date/Time Collected: 07/09/98 13:40
Matrix: Soil

Analysis	Results	Units	MDL	Method	Analyst	Date Run
<i>Organics</i>						
Benzo(a)pyrene	Not detected	mg/kg	0.33	8270	JB	07/10/98
PNA Extraction	Completed				JKB	07/09/98

FECL #: AA62182
Tag: LR-A2-C7F
Date/Time Collected: 07/09/98 13:50
Matrix: Soil

Analysis	Results	Units	MDL	Method	Analyst	Date Run
<i>Organics</i>						
Benzo(a)pyrene	Not detected	mg/kg	0.33	8270	JB	07/10/98
PNA Extraction	Completed				JKB	07/09/98

FECL #: AA62183
Tag: LR-A2-D7F
Date/Time Collected: 07/09/98 14:00
Matrix: Soil

Analysis	Results	Units	MDL	Method	Analyst	Date Run
<i>Organics</i>						
Benzo(a)pyrene	Not detected	mg/kg	0.33	8270	JB	07/10/98
PNA Extraction	Completed				JKB	07/09/98



Analytical Laboratory Report
Roy F. Weston
July 10, 1998

FECL #: AA62184
Tag: LR-A2-E7F
Date/Time Collected: 07/09/98 14:10
Matrix: Soil

Analysis	Results	Units	MDL	Method	Analyst	Date Run
<i>Organics</i>						
Benzo(a)pyrene	Not detected	mg/kg	0.33	8270	JB	07/10/98
PNA Extraction	Completed				JKB	07/09/98

FECL #: AA62185
Tag: LR-A2-B8F
Date/Time Collected: 07/09/98 14:20
Matrix: Soil

Analysis	Results	Units	MDL	Method	Analyst	Date Run
<i>Organics</i>						
Benzo(a)pyrene	Not detected	mg/kg	0.33	8270	JB	07/10/98
PNA Extraction	Completed				JKB	07/09/98

FECL #: AA62186
Tag: LR-A2-C8F
Date/Time Collected: 07/09/98 14:30
Matrix: Soil

Analysis	Results	Units	MDL	Method	Analyst	Date Run
<i>Organics</i>						
Benzo(a)pyrene	Not detected	mg/kg	0.33	8270	JB	07/10/98
PNA Extraction	Completed				JKB	07/09/98



Analytical Laboratory Report
Roy F. Weston
July 10, 1998

FECL #: AA62187
Tag: LR-A2-D8F
Date/Time Collected: 07/09/98 14:40
Matrix: Soil

Analysis	Results	Units	MDL	Method	Analyst	Date Run
<i>Organics</i>						
Benzo(a)pyrene	Not detected	mg/kg	0.33	8270	JB	07/10/98
PNA Extraction	Completed				JKB	07/09/98

FECL #: AA62188
Tag: LR-A2-E8F
Date/Time Collected: 07/09/98 14:50
Matrix: Soil

Analysis	Results	Units	MDL	Method	Analyst	Date Run
<i>Organics</i>						
Benzo(a)pyrene	Not detected	mg/kg	0.33	8270	JB	07/10/98
PNA Extraction	Completed				JKB	07/09/98

FECL #: AA62189
Tag: LR-A2-B9F
Date/Time Collected: 07/09/98 13:05
Matrix: Soil

Analysis	Results	Units	MDL	Method	Analyst	Date Run
<i>Organics</i>						
Benzo(a)pyrene	Not detected	mg/kg	0.33	8270	JB	07/10/98
PNA Extraction	Completed				JKB	07/09/98



Analytical Laboratory Report
Roy F. Weston
July 10, 1998

FECL #: AA62190
Tag: LR-A2-C9F
Date/Time Collected: 07/09/98 13:15
Matrix: Soil

Analysis	Results	Units	MDL	Method	Analyst	Date Run
<i>Organics</i>						
Benzo(a)pyrene	Not detected	mg/kg	0.33	8270	JB	07/10/98
PNA Extraction	Completed				JKB	07/09/98

FECL #: AA62191
Tag: LR-A2-D9F
Date/Time Collected: 07/09/98 13:25
Matrix: Soil

Analysis	Results	Units	MDL	Method	Analyst	Date Run
<i>Organics</i>						
Benzo(a)pyrene	Not detected	mg/kg	0.33	8270	JB	07/10/98
PNA Extraction	Completed				JKB	07/09/98

FECL #: AA62192
Tag: LR-A2-E9F
Date/Time Collected: 07/09/98 13:35
Matrix: Soil

Analysis	Results	Units	MDL	Method	Analyst	Date Run
<i>Organics</i>						
Benzo(a)pyrene	Not detected	mg/kg	0.33	8270	JB	07/10/98
PNA Extraction	Completed				JKB	07/09/98



Analytical Laboratory Report
Roy F. Weston
July 10, 1998

FECL #: AA62193
Tag: LR-A2-B10F
Date/Time Collected: 07/09/98 13:45
Matrix: Soil

Analysis	Results	Units	MDL	Method	Analyst	Date Run
<i>Organics</i>						
Benzo(a)pyrene	Not detected	mg/kg	0.33	8270	JB	07/10/98
PNA Extraction	Completed				JKB	07/09/98

FECL #: AA62194
Tag: LR-A2-C10F
Date/Time Collected: 07/09/98 13:55
Matrix: Soil

Analysis	Results	Units	MDL	Method	Analyst	Date Run
<i>Organics</i>						
Benzo(a)pyrene	Not detected	mg/kg	0.33	8270	JB	07/10/98
PNA Extraction	Completed				JKB	07/09/98

FECL #: AA62195
Tag: LR-A2-D10F
Date/Time Collected: 07/09/98 12:50
Matrix: Soil

Analysis	Results	Units	MDL	Method	Analyst	Date Run
<i>Organics</i>						
Benzo(a)pyrene	Not detected	mg/kg	0.33	8270	JB	07/10/98
PNA Extraction	Completed				JKB	07/09/98



Analytical Laboratory Report
Roy F. Weston
July 10, 1998

FECL #: AA62196
Tag: LR-A2-E10F
Date/Time Collected: 07/09/98 12:55
Matrix: Soil

Analysis	Results	Units	MDL	Method	Analyst	Date Run
<i>Organics</i>						
Benzo(a)pyrene	Not detected	mg/kg	0.33	8270	JB	07/10/98
PNA Extraction	Completed				JKB	07/09/98

Note: Methods may be modified for improved performance.
Results reported on a dry weight basis, where applicable.
Results relate only to items tested.
Report shall not be reproduced except in full, without the written approval of FECL.

Violetta F. Murshak

Violetta F. Murshak
Laboratory Director



Fire & Environmental Consulting Laboratories, Inc.

One East Complex 1451 East Lansing Drive, Suite 222 East Lansing, MI 48823
Phone (517) 332-0167 Fax (517) 332-6333

July 14, 1998

Attention: Mr. Jack Gallagher

Weston
3 Hawthorn Parkway Ste. 400
Vernon Hills, IL 60061

Analytical Laboratory Report

FECL #(s): AA62342-AA62349

Project: GM

Samples collected by: J. GALLAGHER

Date/Time Submitted: 07/13/98 15:41

PO #: Verbal

FECL #: AA62342

Tag: LR-A2-D1S

Date/Time Collected: 07/13/98 11:00

Matrix: Soil

Container(s): 1-Glass

Preservation: Refrigeration/None

FECL #: AA62343

Tag: LR-A2-E1S

Date/Time Collected: 07/13/98 11:05

Matrix: Soil

Container(s): 1-Glass

Preservation: Refrigeration/None

FECL #: AA62344

Tag: LR-A2-F2S

Date/Time Collected: 07/13/98 11:10

Matrix: Soil

Container(s): 1-Glass

Preservation: Refrigeration/None



Analytical Laboratory Report
Weston
July 14, 1998

FECL #: AA62345
Tag: LR-A2-F3S
Date/Time Collected: 07/13/98 11:15
Matrix: Soil
Container(s): 1-Glass
Preservation: Refrigeration/None

FECL #: AA62346
Tag: LR-A2-D2F
Date/Time Collected: 07/13/98 11:20
Matrix: Soil
Container(s): 1-Glass
Preservation: Refrigeration/None

FECL #: AA62347
Tag: LR-A2-E2F
Date/Time Collected: 07/13/98 11:25
Matrix: Soil
Container(s): 1-Glass
Preservation: Refrigeration/None

FECL #: AA62348
Tag: LR-A2-D3F
Date/Time Collected: 07/13/98 11:30
Matrix: Soil
Container(s): 1-Glass
Preservation: Refrigeration/None

FECL #: AA62349
Tag: LR-A2-E3F
Date/Time Collected: 07/13/98 11:35
Matrix: Soil
Container(s): 1-Glass
Preservation: Refrigeration/None



Analytical Laboratory Report
Weston
July 14, 1998

FECL #: AA62342
Tag: LR-A2-D1S
Date/Time Collected: 07/13/98 11:00
Matrix: Soil

Analysis	Results	Units	MDL	Method	Analyst	Date Run
<i>Organics</i>						
Benzo(a)pyrene	Not detected	mg/kg	0.33	8270	JB	07/13/98
PNA Extraction	Completed				JKB	07/13/98

FECL #: AA62343
Tag: LR-A2-E1S
Date/Time Collected: 07/13/98 11:05
Matrix: Soil

Analysis	Results	Units	MDL	Method	Analyst	Date Run
<i>Organics</i>						
Benzo(a)pyrene	Not detected	mg/kg	0.33	8270	JB	07/13/98
PNA Extraction	Completed				JKB	07/13/98

FECL #: AA62344
Tag: LR-A2-F2S
Date/Time Collected: 07/13/98 11:10
Matrix: Soil

Analysis	Results	Units	MDL	Method	Analyst	Date Run
<i>Organics</i>						
Benzo(a)pyrene	Not detected	mg/kg	0.33	8270	JB	07/13/98
PNA Extraction	Completed				JKB	07/13/98



Analytical Laboratory Report
Weston
July 14, 1998

FECL #: AA62345
Tag: LR-A2-F3S
Date/Time Collected: 07/13/98 11:15
Matrix: Soil

Analysis	Results	Units	MDL	Method	Analyst	Date Run
<i>Organics</i>						
Benzo(a)pyrene	Not detected	mg/kg	0.33	8270	JB	07/13/98
PNA Extraction	Completed				JKB	07/13/98

FECL #: AA62346
Tag: LR-A2-D2F
Date/Time Collected: 07/13/98 11:20
Matrix: Soil

Analysis	Results	Units	MDL	Method	Analyst	Date Run
<i>Organics</i>						
Benzo(a)pyrene	Not detected	mg/kg	0.33	8270	JB	07/13/98
PNA Extraction	Completed				JKB	07/13/98

FECL #: AA62347
Tag: LR-A2-E2F
Date/Time Collected: 07/13/98 11:25
Matrix: Soil

Analysis	Results	Units	MDL	Method	Analyst	Date Run
<i>Organics</i>						
Benzo(a)pyrene	Not detected	mg/kg	0.33	8270	JB	07/13/98
PNA Extraction	Completed				JKB	07/13/98



Analytical Laboratory Report
Weston
July 14, 1998

FECL #: AA62348
Tag: LR-A2-D3F
Date/Time Collected: 07/13/98 11:30
Matrix: Soil

Analysis	Results	Units	MDL	Method	Analyst	Date Run
<i>Organics</i>						
Benzo(a)pyrene	Not detected	mg/kg	0.33	8270	JB	07/13/98
PNA Extraction	Completed				JKB	07/13/98

FECL #: AA62349
Tag: LR-A2-E3F
Date/Time Collected: 07/13/98 11:35
Matrix: Soil

Analysis	Results	Units	MDL	Method	Analyst	Date Run
<i>Organics</i>						
Benzo(a)pyrene	Not detected	mg/kg	0.33	8270	JB	07/13/98
PNA Extraction	Completed				JKB	07/13/98

Note: Methods may be modified for improved performance.
Results reported on a dry weight basis, where applicable.
Results relate only to items tested.
Report shall not be reproduced except in full, without the written approval of FECL.

Violetta F. Murshak
Violetta F. Murshak
Laboratory Director



Fire & Environmental Consulting Laboratories, Inc.

One East Complex 1451 East Lansing Drive, Suite 222 East Lansing, MI 48823
Phone (517) 332-0167 Fax (517) 332-6333

July 06, 1998

Attention: Mr. Jack Gallagher

Weston
3 Hawthorn Parkway Ste 400
Vernon Hills, IL 60061

Analytical Laboratory Report

FECL #(s): AA62006-AA62019

Project: GM

Samples collected by: J. GALLAGHER

Date/Time Submitted: 07/02/98 16:35

PO #: Verbal

FECL #: AA62006

Tag: LR-A#-01

Date/Time Collected: 07/02/98

Matrix: Soil

Container(s): 1-Glass

Preservation: Refrigeration/None

FECL #: AA62007

Tag: LR-A3-02

Date/Time Collected: 07/02/98

Matrix: Soil

Container(s): 1-Glass

Preservation: Refrigeration/None

FECL #: AA62008

Tag: LR-A3-03

Date/Time Collected: 07/02/98

Matrix: Soil

Container(s): 1-Glass

Preservation: Refrigeration/None

The logo for FECL, consisting of the letters 'FECL' in a bold, sans-serif font, enclosed within a stylized hexagonal border with a small circle at the top and bottom.

Analytical Laboratory Report
Weston
July 06, 1998

FECL #: AA62009
Tag: I.R-A3-04
Date/Time Collected: 07/02/98
Matrix: Soil
Container(s): 1-Glass
Preservation: Refrigeration/None

FECL #: AA62010
Tag: I.R-A3-05
Date/Time Collected: 07/02/98
Matrix: Soil
Container(s): 1-Glass
Preservation: Refrigeration/None

FECL #: AA62011
Tag: I.R-A3-06
Date/Time Collected: 07/02/98
Matrix: Soil
Container(s): 1-Glass
Preservation: Refrigeration/None

FECL #: AA62012
Tag: I.R-A3-07
Date/Time Collected: 07/02/98
Matrix: Soil
Container(s): 1-Glass
Preservation: Refrigeration/None

FECL #: AA62013
Tag: I.R-A3-08
Date/Time Collected: 07/02/98
Matrix: Soil
Container(s): 1-Glass
Preservation: Refrigeration/None

FECL #: AA62014
Tag: I.R-A3-09
Date/Time Collected: 07/02/98
Matrix: Soil
Container(s): 1-Glass
Preservation: Refrigeration/None



Analytical Laboratory Report
Weston
July 06, 1998

FECL #: AA62015
Tag: I.R-A3-10
Date/Time Collected: 07/02/98
Matrix: Soil
Container(s): 1-Glass
Preservation: Refrigeration/None

FECL #: AA62016
Tag: I.R-A3-11
Date/Time Collected: 07/02/98
Matrix: Soil
Container(s): 1-Glass
Preservation: Refrigeration/None

FECL #: AA62017
Tag: I.R-A3-12
Date/Time Collected: 07/02/98
Matrix: Soil
Container(s): 1-Glass
Preservation: Refrigeration/None

FECL #: AA62018
Tag: I.R-A3-13
Date/Time Collected: 07/02/98
Matrix: Soil
Container(s): 1-Glass
Preservation: Refrigeration/None

FECL #: AA62019
Tag: I.R-A3-14
Date/Time Collected: 07/02/98
Matrix: Soil
Container(s): 1-Glass
Preservation: Refrigeration/None



Analytical Laboratory Report
Weston
July 06, 1998

FECL #: AA62006
Tag: LR-A#-01
Date/Time Collected: 07/02/98
Matrix: Soil

Analysis	Results	Units	MDL	Method	Analyst	Date Run
<i>Metals</i>						
Arsenic	5.45	mg/kg	0.50	6020	P R	07/06/98

FECL #: AA62007
Tag: LR-A3-02
Date/Time Collected: 07/02/98
Matrix: Soil

Analysis	Results	Units	MDL	Method	Analyst	Date Run
<i>Metals</i>						
Arsenic	0.63	mg/kg	0.50	6020	P R	07/06/98

FECL #: AA62008
Tag: LR-A3-03
Date/Time Collected: 07/02/98
Matrix: Soil

Analysis	Results	Units	MDL	Method	Analyst	Date Run
<i>Metals</i>						
Arsenic	0.65	mg/kg	0.50	6020	P R	07/06/98

FECL #: AA62009
Tag: LR-A3-04
Date/Time Collected: 07/02/98
Matrix: Soil

Analysis	Results	Units	MDL	Method	Analyst	Date Run
<i>Metals</i>						
Arsenic	1.47	mg/kg	0.50	6020	P R	07/06/98



Analytical Laboratory Report
Weston
July 06, 1998

FECL #: AA62010
Tag: I.R-A3-05
Date/Time Collected: 07/02/98
Matrix: Soil

Analysis	Results	Units	MDL	Method	Analyst	Date Run
<i>Metals</i>						
Arsenic	2.13	mg/kg	0.50	6020	P R	07/06/98

FECL #: AA62011
Tag: I.R-A3-06
Date/Time Collected: 07/02/98
Matrix: Soil

Analysis	Results	Units	MDL	Method	Analyst	Date Run
<i>Metals</i>						
Arsenic	7.19	mg/kg	0.50	6020	P R	07/06/98

FECL #: AA62012
Tag: I.R-A3-07
Date/Time Collected: 07/02/98
Matrix: Soil

Analysis	Results	Units	MDL	Method	Analyst	Date Run
<i>Metals</i>						
Arsenic	4.10	mg/kg	0.50	6020	P R	07/06/98

FECL #: AA62013
Tag: I.R-A3-08
Date/Time Collected: 07/02/98
Matrix: Soil

Analysis	Results	Units	MDL	Method	Analyst	Date Run
<i>Metals</i>						
Arsenic	9.73	mg/kg	0.50	6020	P R	07/06/98



Analytical Laboratory Report
Weston
July 06, 1998

FECL #: AA62014
Tag: LR-A3-09
Date/Time Collected: 07/02/98
Matrix: Soil

Analysis	Results	Units	MDL	Method	Analyst	Date Run
<i>Metals</i>						
Arsenic	4.22	mg/kg	0.50	6020	P R	07/06/98

FECL #: AA62015
Tag: LR-A3-10
Date/Time Collected: 07/02/98
Matrix: Soil

Analysis	Results	Units	MDL	Method	Analyst	Date Run
<i>Metals</i>						
Arsenic	12.3	mg/kg	0.50	6020	P R	07/06/98

FECL #: AA62016
Tag: LR-A3-11
Date/Time Collected: 07/02/98
Matrix: Soil

Analysis	Results	Units	MDL	Method	Analyst	Date Run
<i>Metals</i>						
Arsenic	0.79	mg/kg	0.50	6020	P R	07/06/98

FECL #: AA62017
Tag: LR-A3-12
Date/Time Collected: 07/02/98
Matrix: Soil

Analysis	Results	Units	MDL	Method	Analyst	Date Run
<i>Metals</i>						
Arsenic	4.68	mg/kg	0.50	6020	P R	07/06/98



Analytical Laboratory Report
 Weston
 July 06, 1998

FECL #: AA62018
Tag: LR-A3-13
Date/Time Collected: 07/02/98
Matrix: Soil

Analysis	Results	Units	MDL	Method	Analyst	Date Run
<i>Metals</i>						
Arsenic	9.82	mg/kg	0.50	6020	P R	07/06/98

FECL #: AA62019
Tag: LR-A3-14
Date/Time Collected: 07/02/98
Matrix: Soil

Analysis	Results	Units	MDL	Method	Analyst	Date Run
<i>Metals</i>						
Arsenic	21.6	mg/kg	0.50	6020	P R	07/06/98

Note: Methods may be modified for improved performance.
 Results reported on a dry weight basis, where applicable.
 Results relate only to items tested.
 Report shall not be reproduced except in full, without the written approval of FECL.

Violetta F. Murshak
 Violetta F. Murshak
 Laboratory Director



Fire & Environmental Consulting Laboratories, Inc.

One East Complex 1451 East Lansing Drive, Suite 222 East Lansing, MI 48823
Phone (517) 332-0167 Fax (517) 332-6333

July 13, 1998

Attention: Mr. Jack Gallagher

Weston
3 Hawthorne Parkway Ste. 400
Vernon Hills, IL 60061

Analytical Laboratory Report

FECL #(s): AA62310-AA62316

Project: GM

Samples collected by: J. GALLAGHER

Date/Time Submitted: 07/10/98 17:00

PO #: Verbal

FECL #: AA62310

Tag: LR-A3-10a

Date/Time Collected: 07/10/98 14:20

Matrix: Soil

Container(s): 1-Glass

Preservation: Refrigeration/None

FECL #: AA62311

Tag: LR-A3-6a

Date/Time Collected: 07/10/98 14:25

Matrix: Soil

Container(s): 1-Glass

Preservation: Refrigeration/None

FECL #: AA62312

Tag: LR-A3-13a

Date/Time Collected: 07/10/98 14:30

Matrix: Soil

Container(s): 1-Glass

Preservation: Refrigeration/None



Analytical Laboratory Report
Roy F. Weston
July 13, 1998

FECL #: AA62313
Tag: LR-A3-8a
Date/Time Collected: 07/10/98 14:35
Matrix: Soil
Container(s): 1-Glass
Preservation: Refrigeration/None

FECL #: AA62314
Tag: LR-A3-14a
Date/Time Collected: 07/10/98 14:40
Matrix: Soil
Container(s): 1-Glass
Preservation: Refrigeration/None

FECL #: AA62315
Tag: LR-A4-11a
Date/Time Collected: 07/10/98 14:50
Matrix: Soil
Container(s): 1-Glass
Preservation: Refrigeration/None

FECL #: AA62316
Tag: LR-A4-8a
Date/Time Collected: 07/10/98 14:55
Matrix: Soil
Container(s): 1-Glass
Preservation: Refrigeration/None



Analytical Laboratory Report
Roy F. Weston
July 13, 1998

FECL #: AA62310
Tag: LR-A3-10a
Date/Time Collected: 07/10/98 14:20
Matrix: Soil

Analysis	Results	Units	MDL	Method	Analyst	Date Run
<i>Metals</i>						
Arsenic	17.4	mg/kg	0.50	6020	E B	07/11/98

FECL #: AA62311
Tag: LR-A3-6a
Date/Time Collected: 07/10/98 14:25
Matrix: Soil

Analysis	Results	Units	MDL	Method	Analyst	Date Run
<i>Metals</i>						
Arsenic	12.6	mg/kg	0.50	6020	E B	07/11/98

FECL #: AA62312
Tag: LR-A3-13a
Date/Time Collected: 07/10/98 14:30
Matrix: Soil

Analysis	Results	Units	MDL	Method	Analyst	Date Run
<i>Metals</i>						
Arsenic	9.01	mg/kg	0.50	6020	E B	07/11/98

FECL #: AA62313
Tag: LR-A3-8a
Date/Time Collected: 07/10/98 14:35
Matrix: Soil

Analysis	Results	Units	MDL	Method	Analyst	Date Run
<i>Metals</i>						
Arsenic	26.8	mg/kg	0.50	6020	E B	07/11/98



Analytical Laboratory Report
Roy F. Weston
July 13, 1998

FECL #: AA62314
Tag: LR-A3-14a
Date/Time Collected: 07/10/98 14:40
Matrix: Soil

Analysis	Results	Units	MDL	Method	Analyst	Date Run
<i>Metals</i>						
Arsenic	7.09	mg/kg	0.50	6020	E B	07/11/98

FECL #: AA62315
Tag: LR-A4-11a
Date/Time Collected: 07/10/98 14:50
Matrix: Soil

Analysis	Results	Units	MDL	Method	Analyst	Date Run
<i>Metals</i>						
Arsenic	7.75	mg/kg	0.50	6020	E B	07/11/98

FECL #: AA62316
Tag: LR-A4-8a
Date/Time Collected: 07/10/98 14:55
Matrix: Soil

Analysis	Results	Units	MDL	Method	Analyst	Date Run
<i>Metals</i>						
Arsenic	3.00	mg/kg	0.50	6020	E B	07/11/98



Analytical Laboratory Report
Roy F. Weston
July 13, 1998

Note: Methods may be modified for improved performance.
Results reported on a dry weight basis, where applicable.
Results relate only to items tested.
Report shall not be reproduced except in full, without the written approval of FECL.

Violetta F. Murshak

Violetta F. Murshak
Laboratory Director



Fire & Environmental Consulting Laboratories, Inc.

One East Complex 1451 East Lansing Drive, Suite 222 East Lansing, MI 48823
Phone (517) 332-0167 Fax (517) 332-6333

November 13, 1998

Attention: Mr. Jack Gallagher

Weston
3 Hawthorn Parkway Ste. 400
Vernon Hills, IL 60061

Analytical Laboratory Report

FECL #(s): AA68256-AA68258

Project: GM

Samples collected by: J. GALLAGHER
Date/Time Submitted: 11/05/98 16:45
PO #: Verbal

FECL #: AA68256

Tag: LR-A3-10-3
Date/Time Collected: 11/04/98 15:10
Matrix: Soil
Container(s): 1-Glass
Preservation: Refrigeration/None

FECL #: AA68257

Tag: LR-A3-08-3
Date/Time Collected: 11/04/98 15:30
Matrix: Soil
Container(s): 1-Glass
Preservation: Refrigeration/None

FECL #: AA68258

Tag: LR-A3-14-2
Date/Time Collected: 11/04/98 15:50
Matrix: Soil
Container(s): 1-Glass
Preservation: Refrigeration/None



Analytical Laboratory Report
Weston
November 13, 1998

FECL #: AA68256
Tag: LR-A3-10-3
Date/Time Collected: 11/04/98 15:10
Matrix: Soil

Analysis	Results	Units	MDL	Method	Analyst	Date Run
<i>Inorganics</i>						
Total Solids	92.1	%	1	160.3	KT	11/12/98
<i>Metals</i>						
Arsenic	4.07	mg/kg	0.50	6020	P R	11/12/98

FECL #: AA68257
Tag: LR-A3-08-3
Date/Time Collected: 11/04/98 15:30
Matrix: Soil

Analysis	Results	Units	MDL	Method	Analyst	Date Run
<i>Inorganics</i>						
Total Solids	84.2	%	1	160.3	KT	11/12/98
<i>Metals</i>						
Arsenic	2.82	mg/kg	0.50	6020	P R	11/12/98

FECL #: AA68258
Tag: LR-A3-14-2
Date/Time Collected: 11/04/98 15:50
Matrix: Soil

Analysis	Results	Units	MDL	Method	Analyst	Date Run
<i>Inorganics</i>						
Total Solids	88.0	%	1	160.3	KT	11/12/98
<i>Metals</i>						
Arsenic	1.93	mg/kg	0.50	6020	P R	11/12/98



Analytical Laboratory Report
Weston
November 13, 1998

Note: Methods may be modified for improved performance.
Results reported on a dry weight basis, where applicable.
Results relate only to items tested.
Report shall not be reproduced except in full, without the written approval of FECL.

Violetta F. Murshak

Violetta F. Murshak
Laboratory Director



Fire & Environmental Consulting Laboratories, Inc.

One East Complex 1451 East Lansing Drive, Suite 222 East Lansing, MI 48823
Phone (517) 332-0167 Fax (517) 332-6333

July 02, 1998

Attention: Mr. Jack Gallagher

Roy F. Weston
3 Hawthorn Pky Suite 400
Veron Hills, IL 60061

Analytical Laboratory Report

FECL #(s): AA61923-AA61934

Project: Linden Rd.

Samples collected by: JACK GALLAGHER

Date/Time Submitted: 07/01/98 17:00

PO #: Verbal

FECL #: AA61923

Tag: I.R-A4-01

Date/Time Collected: 07/01/98 14:00

Matrix: Soil

Container(s): 1-4oz. Glass

Preservation: Refrigeration/None

FECL #: AA61924

Tag: I.R-A4-02

Date/Time Collected: 07/01/98 14:10

Matrix: Soil

Container(s): 1-4oz. Glass

Preservation: Refrigeration/None

FECL #: AA61925

Tag: I.R-A4-03

Date/Time Collected: 07/01/98 14:20

Matrix: Soil

Container(s): 1-4oz. Glass

Preservation: Refrigeration/None



Analytical Laboratory Report
Roy F. Weston
July 02, 1998

FECL #: AA61926

Tag: I.R-A4-04
Date/Time Collected: 07/01/98 14:30
Matrix: Soil
Container(s): 1-4oz. Glass
Preservation: Refrigeration/None

FECL #: AA61927

Tag: I.R-A4-05
Date/Time Collected: 07/01/98 14:40
Matrix: Soil
Container(s): 1-4oz. Glass
Preservation: Refrigeration/None

FECL #: AA61928

Tag: I.R-A4-06
Date/Time Collected: 07/01/98 14:50
Matrix: Soil
Container(s): 1-4oz. Glass
Preservation: Refrigeration/None

FECL #: AA61929

Tag: I.R-A4-07
Date/Time Collected: 07/01/98 15:00
Matrix: Soil
Container(s): 1-4oz. Glass
Preservation: Refrigeration/None

FECL #: AA61930

Tag: I.R-A4-08
Date/Time Collected: 07/01/98 15:10
Matrix: Soil
Container(s): 1-4oz. Glass
Preservation: Refrigeration/None

FECL #: AA61931

Tag: I.R-A4-09
Date/Time Collected: 07/01/98 15:20
Matrix: Soil
Container(s): 1-4oz. Glass
Preservation: Refrigeration/None

The logo for FECL, featuring the letters "FECL" in a bold, sans-serif font inside a stylized hexagonal shape with a small circle at the top right.

Analytical Laboratory Report
Roy F. Weston
July 02, 1998

FECL #: AA61932
Tag: I.R-A4-10
Date/Time Collected: 07/01/98 15:30
Matrix: Soil
Container(s): 1-4oz Glass
Preservation: Refrigeration/None

FECL #: AA61933
Tag: I.R-A4-11
Date/Time Collected: 07/01/98 15:40
Matrix: Soil
Container(s): 1-4oz Glass
Preservation: Refrigeration/None

FECL #: AA61934
Tag: I.R-A4-12
Date/Time Collected: 07/01/98 15:50
Matrix: Soil
Container(s): 1-4oz Glass
Preservation: Refrigeration/None



Analytical Laboratory Report
 Roy F. Weston
 July 02, 1998

FECL #: AA61923
Tag: I.R-A4-01
Date/Time Collected: 07/01/98 14:00
Matrix: Soil

Analysis	Results	Units	MDL	Method	Analyst	Date Run
<i>Metals</i>						
Arsenic	0.84	mg/kg	0.50	6020	P R	07/01/98

FECL #: AA61924
Tag: I.R-A4-02
Date/Time Collected: 07/01/98 14:10
Matrix: Soil

Analysis	Results	Units	MDL	Method	Analyst	Date Run
<i>Metals</i>						
Arsenic	4.17	mg/kg	0.50	6020	P R	07/01/98

FECL #: AA61925
Tag: I.R-A4-03
Date/Time Collected: 07/01/98 14:20
Matrix: Soil

Analysis	Results	Units	MDL	Method	Analyst	Date Run
<i>Metals</i>						
Arsenic	0.99	mg/kg	0.50	6020	P R	07/01/98

FECL #: AA61926
Tag: I.R-A4-04
Date/Time Collected: 07/01/98 14:30
Matrix: Soil

Analysis	Results	Units	MDL	Method	Analyst	Date Run
<i>Metals</i>						
Arsenic	2.70	mg/kg	0.50	6020	P R	07/01/98



Analytical Laboratory Report
 Roy F. Weston
 July 02, 1998

FECL #: AA61927
Tag: LR-A4-05
Date/Time Collected: 07/01/98 14:40
Matrix: Soil

Analysis	Results	Units	MDL	Method	Analyst	Date Run
<i>Metals</i>						
Arsenic	2.80	mg/kg	0.50	6020	P R	07/01/98

FECL #: AA61928
Tag: LR-A4-06
Date/Time Collected: 07/01/98 14:50
Matrix: Soil

Analysis	Results	Units	MDL	Method	Analyst	Date Run
<i>Metals</i>						
Arsenic	1.08	mg/kg	0.50	6020	P R	07/01/98

FECL #: AA61929
Tag: LR-A4-07
Date/Time Collected: 07/01/98 15:00
Matrix: Soil

Analysis	Results	Units	MDL	Method	Analyst	Date Run
<i>Metals</i>						
Arsenic	2.03	mg/kg	0.50	6020	P R	07/01/98

FECL #: AA61930
Tag: LR-A4-08
Date/Time Collected: 07/01/98 15:10
Matrix: Soil

Analysis	Results	Units	MDL	Method	Analyst	Date Run
<i>Metals</i>						
Arsenic	13.4	mg/kg	0.50	6020	P R	07/01/98



Analytical Laboratory Report
 Roy F. Weston
 July 02, 1998

FECL #: AA61931
Tag: LR-A4-09
Date/Time Collected: 07/01/98 15:20
Matrix: Soil

Analysis	Results	Units	MDL	Method	Analyst	Date Run
<i>Metals</i>						
Arsenic	1.94	mg/kg	0.50	6020	P R	07/01/98

FECL #: AA61932
Tag: LR-A4-10
Date/Time Collected: 07/01/98 15:30
Matrix: Soil

Analysis	Results	Units	MDL	Method	Analyst	Date Run
<i>Metals</i>						
Arsenic	1.81	mg/kg	0.50	6020	P R	07/01/98

FECL #: AA61933
Tag: LR-A4-11
Date/Time Collected: 07/01/98 15:40
Matrix: Soil

Analysis	Results	Units	MDL	Method	Analyst	Date Run
<i>Metals</i>						
Arsenic	7.98	mg/kg	0.50	6020	P R	07/01/98

FECL #: AA61934
Tag: LR-A4-12
Date/Time Collected: 07/01/98 15:50
Matrix: Soil

Analysis	Results	Units	MDL	Method	Analyst	Date Run
<i>Metals</i>						
Arsenic	1.33	mg/kg	0.50	6020	P R	07/01/98

The logo for FECL, consisting of the letters 'FECL' in a bold, sans-serif font, enclosed within a hexagonal border with a small circle at the top and bottom.

Analytical Laboratory Report
Roy F. Weston
July 02, 1998

Note: Methods may be modified for improved performance.
Results reported on a dry weight basis, where applicable.
Results relate only to items tested.
Report shall not be reproduced except in full, without the written approval of FECL.

Violetta F. Murshak

Violetta F. Murshak
Laboratory Director



Fire & Environmental Consulting Laboratories, Inc.

One East Complex 1451 East Lansing Drive, Suite 222 East Lansing, MI 48823
Phone (517) 332-0167 Fax (517) 332-6333

July 22, 1998

Attention: Mr. Jack Gallagher

Weston
3 Hawthorn PKY. Ste.400
Vernon Hills, IL 60061

Analytical Laboratory Report

FECL #(s): AA62658-AA62663

Project: GM

Samples collected by: J. GALLAGHER
Date/Time Submitted: 07/22/98 08:00
PO #: Verbal

FECL #: AA62658

Tag: LR-A5-01F
Date/Time Collected: 07/20/98 14:10
Matrix: Soil
Container(s): 1-4oz Glass
Preservation: Refrigeration/None

FECL #: AA62659

Tag: LR-A5-02F
Date/Time Collected: 07/20/98 14:15
Matrix: Soil
Container(s): 1-4oz Glass
Preservation: Refrigeration/None

FECL #: AA62660

Tag: LR-A5-03F
Date/Time Collected: 07/20/98 14:20
Matrix: Soil
Container(s): 1-4oz Glass
Preservation: Refrigeration/None



Analytical Laboratory Report
Weston
July 22, 1998

FECL #: AA62661
Tag: LR-A5-04F
Date/Time Collected: 07/20/98 14:25
Matrix: Soil
Container(s): 1-4oz Glass
Preservation: Refrigeration/None

FECL #: AA62662
Tag: LR-A5-05F
Date/Time Collected: 07/20/98 14:35
Matrix: Soil
Container(s): 1-4oz Glass
Preservation: Refrigeration/None

FECL #: AA62663
Tag: LR-A5-06F
Date/Time Collected: 07/20/98 14:45
Matrix: Soil
Container(s): 1-4oz Glass
Preservation: Refrigeration/None



Analytical Laboratory Report
Weston
July 22, 1998

FECL #: AA62658
Tag: LR-A5-01F
Date/Time Collected: 07/20/98 14:10
Matrix: Soil

Analysis	Results	Units	MDL	Method	Analyst	Date Run
<i>Metals</i>						
Arsenic	10.5	mg/kg	0.50	6020	P R	07/22/98

FECL #: AA62659
Tag: LR-A5-02F
Date/Time Collected: 07/20/98 14:15
Matrix: Soil

Analysis	Results	Units	MDL	Method	Analyst	Date Run
<i>Metals</i>						
Arsenic	4.26	mg/kg	0.50	6020	P R	07/22/98

FECL #: AA62660
Tag: LR-A5-03F
Date/Time Collected: 07/20/98 14:20
Matrix: Soil

Analysis	Results	Units	MDL	Method	Analyst	Date Run
<i>Metals</i>						
Arsenic	5.72	mg/kg	0.50	6020	P R	07/22/98

FECL #: AA62661
Tag: LR-A5-04F
Date/Time Collected: 07/20/98 14:25
Matrix: Soil

Analysis	Results	Units	MDL	Method	Analyst	Date Run
<i>Metals</i>						
Arsenic	7.74	mg/kg	0.50	6020	P R	07/22/98



Analytical Laboratory Report
Weston
July 22, 1998

FECL #: AA62662
Tag: LR-A5-05F
Date/Time Collected: 07/20/98 14:35
Matrix: Soil

Analysis	Results	Units	MDL	Method	Analyst	Date Run
<i>Metals</i>						
Arsenic	12.4	mg/kg	0.50	6020	P R	07/22/98

FECL #: AA62663
Tag: LR-A5-06F
Date/Time Collected: 07/20/98 14:45
Matrix: Soil

Analysis	Results	Units	MDL	Method	Analyst	Date Run
<i>Metals</i>						
Arsenic	9.29	mg/kg	0.50	6020	P R	07/22/98

Note: Methods may be modified for improved performance.
Results reported on a dry weight basis, where applicable.
Results relate only to items tested.
Report shall not be reproduced except in full, without the written approval of FECL.

Violetta F. Murshak

Violetta F. Murshak
Laboratory Director

APPENDIX B

**CALCULATIONS OF 95 PERCENT UPPER CONFIDENCE LIMIT (UCL)
FOR RESIDUAL ARSENIC CONCENTRATIONS IN
PARCELS NO. 2 AND NO. 3**

TABLE B-1

**CALCULATION OF 95 PERCENT UCL CONCENTRATION OF ARSENIC
LINDEN ROAD SITE
PARCELS NO. 2 AND NO. 3**

Statistical Parameters	Arsenic (mg/kg)
Mean (lognormal)	1.32116
Standard deviation(s)	0.848283
s ²	0.72
n	149
sqrt (n-1)	12.17
H (0.95)	2.074592
UCL (95%)	6.2
Maximum detected concentration	26.8
Exposure point concentration	6.2

s = standard deviation

n = number of samples

H = H-statistic, value of H (0.95) for computing one-sided Upper 95% Confidence Limit on a Lognormal Mean (see Table B-2)

95% UCL = 95 % Upper Confidence Limit on the arithmetic mean.

Source/Reference:

1. EPA, 1992. Supplemental Guidance of RAGS: Calculating the Concentration Term. OSWER Publication 9285.7-081. May 1992.
2. EPA, 1994. Soil Screening Guidance: Technical Background Document. Draft, December 1994.

TABLE B-2

**DERIVATION OF H-STATISTIC FOR
CALCULATION OF 95 PERCENT UCL CONCENTRATION OF ARSENIC
LINDEN ROAD SITE
PARCELS NO. 2 AND NO. 3**

$$H_{0.95} = (1-p)(1-q)h(1,1) + p(1-q)h(2,1) + (1-p)qh(1,2) + pqh(2,2)$$

Parameters	Values
n	149
s	0.8483
n1	101
n2	101
s1	0.8
s2	0.9
h(s1,n1)	2.035
h(s1,n2)	2.035
h(s2,n1)	2.117
h(s2,n2)	2.117
p	0.48283
q	0
H _{0.95}	2.07459206

s = standard deviation

n = number of samples

n1 = closest number less than n in Table 4-3*.

n2 = closest number greater than n in Table 4-3.

s1 = closest number less than s in Table 4-3.

s2 = closest number greater than s in Table 4-3.

n(s1,n1) = corresponds to value in Table 4-3 for s1, n1

h(s1,n2) = corresponds to value in Table 4-3 for s1, n2

h(s2,n1) = corresponds to value in Table 4-3 for s2, n1

h(s2,n2) = corresponds to value in Table 4-3 for s2, n2

$$p = \frac{s-s_1}{s_2-s_1} \quad \text{and} \quad q = \frac{n-n_1}{n_2-n_1}$$

$$H_{0.95} = (1-p)(1-q)h(s_1,n_1) + p(1-q)h(s_2,n_1) + (1-p)qh(s_1,n_2) + pqh(s_2,n_2)$$

*Table 4-3 of EPA, 1994, Soil Screening Guidance: Technical Background Document, (draft) December 1994.

TABLE B-3

**RESIDUAL ARSENIC CONCENTRATIONS
LINDEN ROAD SITE
PARCELS NO. 2 AND NO. 3
(All concentrations in mg/kg)**

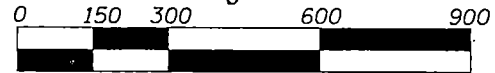
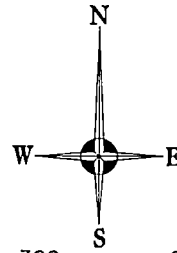
1.32	4.87	1.06
18	6.8	7.83
3.15	6.9	3.64
0.25	16.6	6.16
3.55	6.35	10.8
1.94	8.67	8.45
1.24	8.07	0.87
0.86	4.64	3.31
0.99	3.55	1.59
17.5	3.51	1.83
2.46	5.84	1.7
0.8	4.03	1.52
3.03	2.74	3.57
3.45	1.86	1.62
1.18	4.74	5.45
3.35	6.96	0.63
3.36	5.11	0.65
1.34	4.57	1.47
1.07	6.2	2.13
0.25	5.29	12.6
3.34	3.87	4.1
3.38	4.64	26.8
0.65	4.93	4.22
7.37	5.55	17.4
10.8	5.53	0.79
2.84	4.12	4.68
2.86	4.23	9.01
3.26	3.94	7.09
9.25	1.59	0.84
1.52	3.92	4.17
1.89	8.87	0.99
10.5	5.87	2.7
6.48	7.77	2.8
2.65	6.09	1.08
3.37	5.89	2.03
1.72	5	3
1.53	6.09	1.94
7.14	8.17	1.81
9.96	5.78	7.75
9.86	4.05	1.33
2.24	3.37	10.5
10.6	3.76	4.26
11.3	3.54	5.72
9.69	3.62	7.74
18	4.15	12.4
11.7	4.55	9.29
6.4	3.67	4.07
6.17	3.78	2.82
8.83	3.3	1.93
6.29	5.25	----

Date Source: data from the April/May 1997 (WESTON, July 1997) Characterization Study and July/August 1998 Verification of Soil Remediation conducted by WESTON.

APPENDIX C

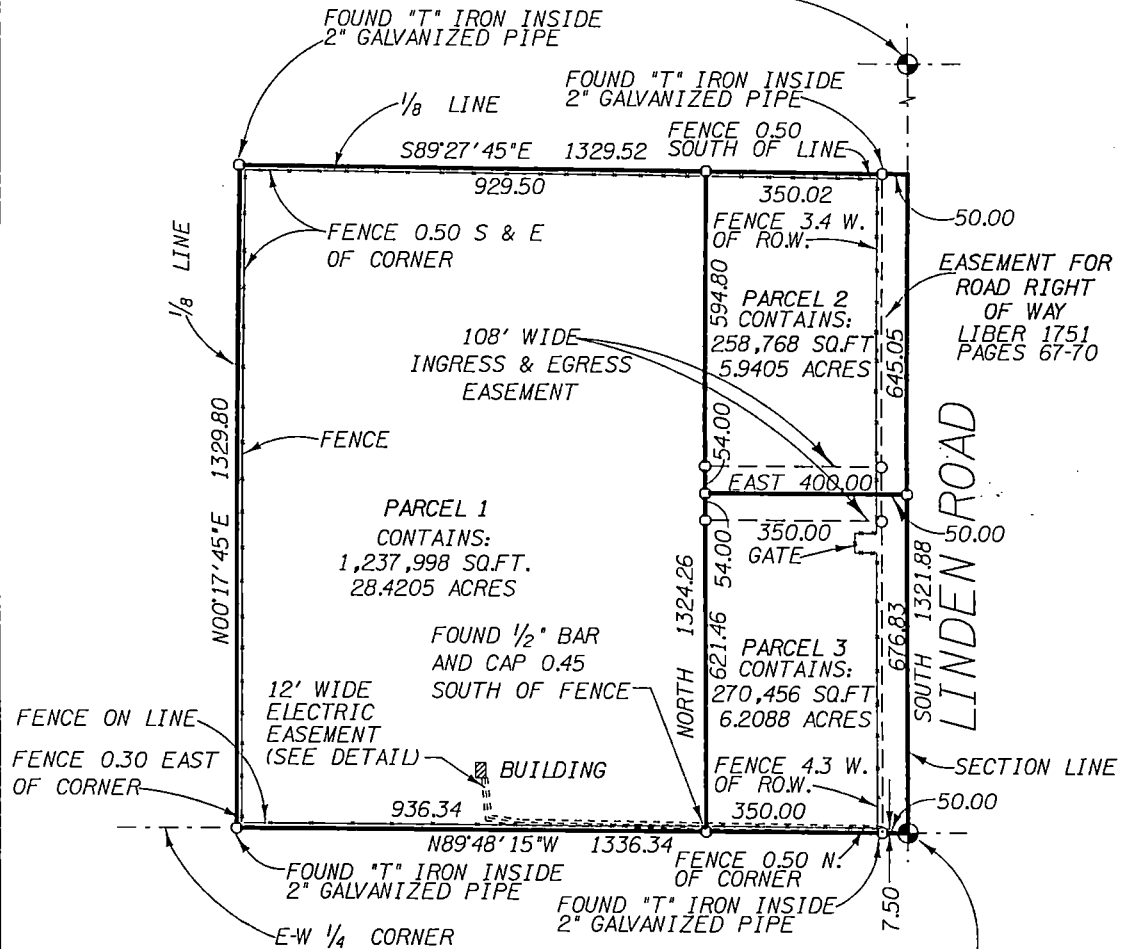
LEGAL DESCRIPTIONS OF PARCELS NO. 2 AND NO. 3

CERTIFICATE OF SURVEY



SCALE: 1" = 300'

NE CORNER
SECTION 17, T7N, R6E, FLINT TOWNSHIP
GENESEE COUNTY, MICHIGAN.
② 2" SIGN POST S40°W 62.85
NAIL & WASHER S.FACE P.POLE N45°W 60.95
NAIL & WASHER S.FACE P.POLE N40°E 63.75
NAIL & WASHER SW.FACE P.POLE S40°E 64.61



LEGEND

○ INDICATES 1/2" x 18" CAP AND STEEL BAR SET UNLESS OTHERWISE NOTED

E 1/4 CORNER FOUND 3/4" IRON IN MON. BOX
SECTION 17, T7N, R6E, FLINT TOWNSHIP,
GENESEE COUNTY, MICHIGAN.
P.K. & WASHER N. SIDE P. POLE WEST 51.40
P.K. & WASHER N. SIDE P. POLE EAST 50.50
NE CORNER C.B. S40°W 60.50
NW CORNER C.B. S40°E 61.40

05-12-99 REVISION *2 ESMT.
05-06-99 REVISION *2 ESMT.
12-12-97 PARCEL REVISION *2
11-20-97 REV. PARCEL DIVISIONS
R. L. HIGGINS, P.S. No. 21570

JOB NO. 95479.26	HUBBELL, ROTH & CLARK, INC. CONSULTING ENGINEERS	SHEET NO. 1
DATE 10-20-97	555 HULET DRIVE BLOOMFIELD HILLS, MICH.	P.O. BOX 824 48303-0824
		OF 4

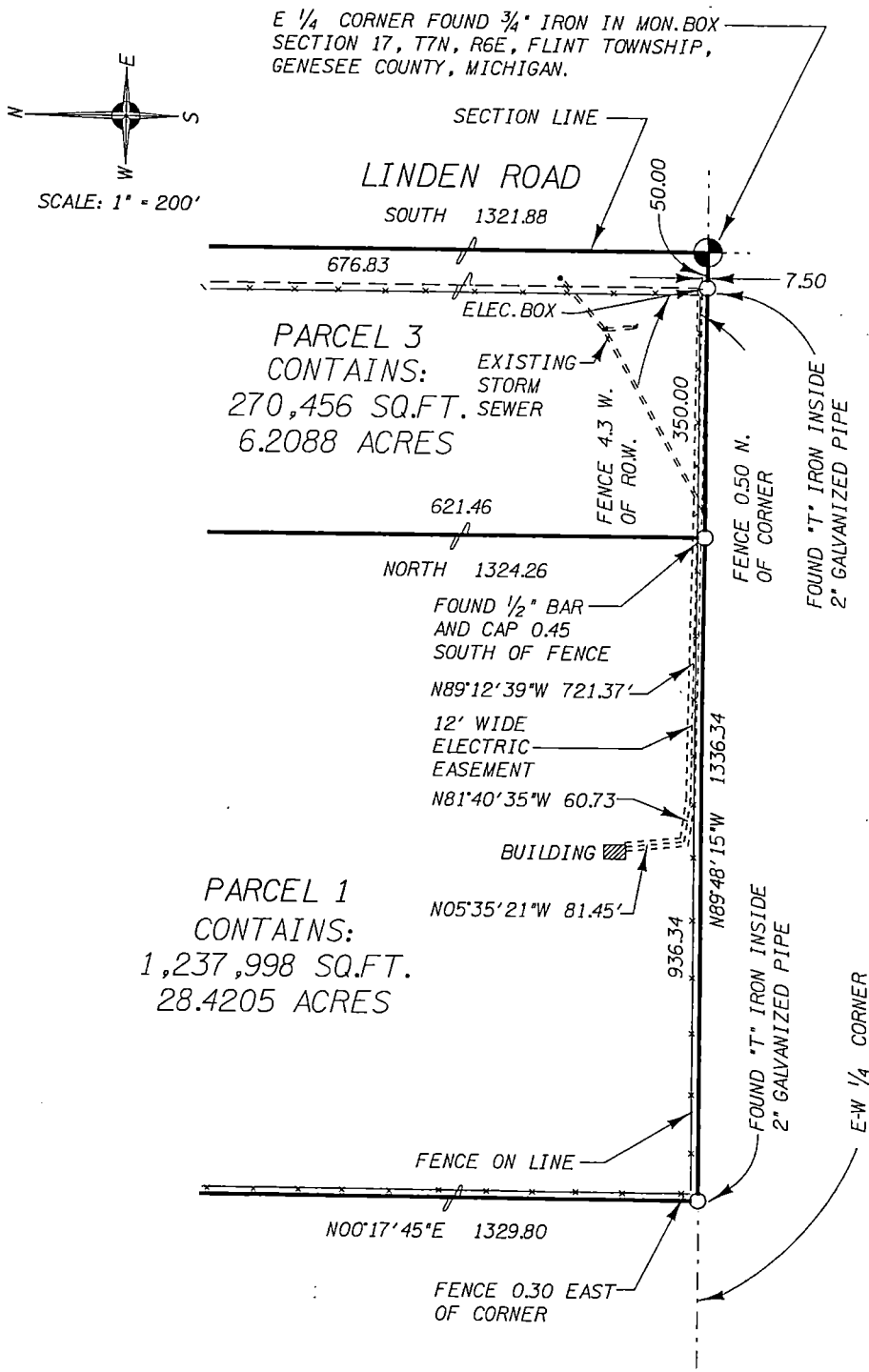
SKETCH OF EASEMENT

STROKE TIME - 20-MAY-1999 16:10

PLOT NAME - N/A

DESIGN FILE - f:\1995\199504\19950479\codd\field\95479s1.dgn

USER NAME - dhebert



JOB NO. 95479.26	HUBBELL, ROTH & CLARK, INC. CONSULTING ENGINEERS 555 HULET DRIVE BLOOMFIELD HILLS, MICH.	SHEET NO. 2
DATE 05-12-99		OF 4

R. L. HIGGINS, P.S.No. 21570

05-19-99
95479 RLH
Linden Landfill Split - REVISED 2

DESCRIPTION OF PROPERTY- (FROM RECORD)

The SE 1/4 of the NE 1/4 of Section 17, T7N, R6E, Flint Township, Genesee County, Michigan, described as: BEGINNING at the E 1/4 corner of Section 17; thence N89°48'15"W 1336.34 feet along the E-W 1/4 line to the 1/8 line; thence N00°17'45"E 1329.80 feet along the 1/8 line; thence S89°27'45"E 1329.52 feet along the 1/8 line to the east line of Section 17 and Linden Road; thence South 1321.88 feet along the east line of Section 17 and to the POINT OF BEGINNING. Containing 1,767,223 square feet or 40.5699 acres, more or less.

Subject to restrictions, reservations, and easements, if any.

DESCRIPTION OF PROPERTY- PARCEL NO. 1

A part of the SE 1/4 of the NE 1/4 of Section 17, T7N, R6E, Flint Township, Genesee County, Michigan, described as: Commencing at the E 1/4 corner of Section 17; thence N89°48'15"W 400.00 feet along the E-W 1/4 line for a POINT OF BEGINNING; thence continuing N89°48'15"W 936.34 feet along the E-W 1/4 line to the 1/8 line; thence N00°17'45"E 1329.80 feet along the 1/8 line; thence S89°27'45"E 929.50 feet; thence South 1324.26 feet to the E-W 1/4 line and to the POINT OF BEGINNING. Containing 1,237,998 square feet or 28.4205 acres, more or less.

Together with the following 108.00 foot wide easement for ingress-egress described as: Commencing at the E 1/4 corner of Section 17; thence North 676.83 feet along the east line of Section 17 and centerline of Linden Road; thence West 50.00 feet to the west right-of-way of Linden Road and for a POINT OF BEGINNING; thence South 54.00 feet along the west right-of-way of Linden Road; thence West 350.00 feet; thence North 108.00 feet; thence East 350.00 feet to the west right-of-way of Linden Road; thence South 54.00 feet along the west right-of-way of Linden Road and to the POINT OF BEGINNING. Containing a total of 37,799 square feet or 0.8678 acres, more or less.

DESCRIPTION OF ELECTRIC EASEMENT

Subject to and together with a 12.00 foot wide Electric Easement lying 6.00 feet either side of and adjoining a line described as: Commencing at the SE corner of Parcel No. 3, also being the E1/4 corner of Section 17; thence N89°48'15"W 50.00 feet; thence North 7.50 feet along the west right of way of Linden Road for a POINT OF BEGINNING; thence N89°12'39"W 721.67 feet; thence N81°40'35"W 60.73 feet; thence N05°35'21"W 81.45 feet to the POINT OF ENDING.

Subject to restrictions, reservations, and easements, if any.

DESCRIPTION OF PROPERTY- PARCEL NO. 2

A part of the SE 1/4 of the NE 1/4 of Section 17, T7N, R6E, Flint Township, Genesee County, Michigan, described as: Commencing at the E 1/4 corner of Section 17; thence North 676.83 feet along the east line of Section 17 and centerline of Linden Road for a POINT OF BEGINNING; thence continuing North 645.05 feet along the east line of Section 17 and centerline of Linden Road to the 1/8 line; thence N89°27'45"W 400.02 feet along the 1/8 line; thence South 648.80 feet; thence East 400.00 feet to the east line of Section 17 and centerline of Linden Road and to the POINT OF BEGINNING. Containing 258,768 square feet or 5.9405 acres, more or less.

Subject to and together with, the following 108.00 foot wide easement for ingress-egress described as: Commencing at the E 1/4 corner of Section 17; thence North 676.83 feet along the east line of Section 17 and centerline of Linden Road; thence West 50.00 feet to the west right-of-way of Linden Road and for a POINT OF BEGINNING; thence South 54.00 feet along the west right-of-way of Linden Road; thence West 350.00 feet; thence North 108.00 feet; thence East 350.00 feet to the west right-of-way of Linden Road; thence South 54.00 feet along the west right-of-way of Linden Road and to the POINT OF BEGINNING. Containing a total of 37,799 square feet or 0.8678 acres, more or less.

Also, Subject to the 50.00 foot wide right-of-way for Linden Road as recorded in Liber 1751, Pages 67-70, Genesee County Records.

DESCRIPTION OF PROPERTY- PARCEL NO. 3

A part of the SE 1/4 of the NE 1/4 of Section 17, T7N, R6E, Flint Township, Genesee County, Michigan, described as: BEGINNING at the E 1/4 corner of Section 17; thence N89°48'15"W 400.00 feet along the E-W 1/4 line; thence North 675.46 feet; thence East 400.00 feet to the east line of Section 17 and centerline of Linden Road; thence South 676.83 feet along the east line of Section 17 and centerline of Linden Road and to the POINT OF BEGINNING. Containing 270,456 square feet or 6.2088 acres, more or less.

Subject to and together with, the following 108.00 foot wide easement for ingress-egress described as: Commencing at the E 1/4 corner of Section 17; thence North 676.83 feet along the east line of Section 17 and centerline of Linden Road; thence West 50.00 feet to the west right-of-way of Linden Road and for a POINT OF BEGINNING; thence South 54.00 feet along the west right-of-way of Linden Road; thence West 350.00 feet; thence North 108.00 feet; thence East 350.00 feet to the west right-of-way of Linden Road; thence South 54.00 feet along the west right-of-way of Linden Road and to the POINT OF BEGINNING. Containing a total of 37,799 square feet or 0.8678 acres, more or less.

DESCRIPTION OF ELECTRIC EASEMENT

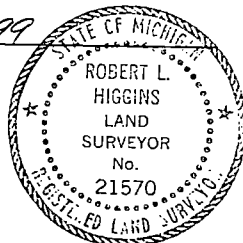
Subject to and together with a 12.00 foot wide Electric Easement lying 6.00 feet either side of and adjoining a line described as: Commencing at the SE corner of Parcel No. 3, also being the E1/4 corner of Section 17; thence N89°48'15"W 50.00 feet; thence North 7.50 feet along the west right of way of Linden Road for a POINT OF BEGINNING; thence N89°12'39"W 721.67 feet; thence N81°40'35"W 60.73 feet; thence N05°35'21"W 81.45 feet to the POINT OF ENDING.

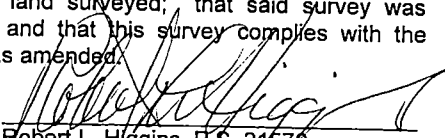
Also, Subject to the 50.00 foot wide right-of-way for Linden Road as recorded in Liber 1751, Pages 67-70, Genesee County Records.

Subject to restrictions, reservations, and easements, if any.

I HEREBY CERTIFY that this is a true and accurate survey; that this drawing is a correct representation of all the exterior boundaries of the land surveyed; that said survey was performed with an error of closure of 1 in 14500; and that this survey complies with the requirements of Section 3, Act No. 132, P.A. of 1970, as amended.

Date: 05-20-99




Robert L. Higgins, P.S. 21570
Hubbell, Roth & Clark, Inc.
555 Hulet Drive
Bloomfield Hills, Michigan 48303-0824