

INTRODUCTION

RACER Trust is issuing this Project Update to inform property owners about the planned soil and groundwater investigation that is scheduled to be completed between November 5, 2012 and November 09, 2012. This work will include completing seven shallow soil borings and three shallow groundwater monitoring wells. Two soil borings and one monitoring well will be located within the road right-of way (ROW) along North Rosemary Avenue. Three soil borings and one monitoring well will be located within the road ROW along West Michigan Avenue. One soil boring and one monitoring well will be located within the ROW along Osborne Road. One soil boring will be located within the ROW along Stanley Street.

This work is part of an investigation being completed by RACER under Michigan Department of Environmental Quality (MDEQ) approval in support of property cleanup and redevelopment. ARCADIS (RACER's consultant) has selected PM Environmental (a Lansing, Michigan based company) to complete the soil borings and install the monitoring wells. These drilling activities are estimated to take five days to complete and the hours of operation will be from approximately 8:00 am to 5:00 pm. During that time, a pick-up sized drill rig and support vehicles will be working within the road ROW between the road and the edge of the ROW. No work is scheduled to take place within the actual roadway. At the completion of each soil boring, the boring will be backfilled back the original ground surface and the surface conditions will be restored back to original conditions (see figure 1). Each well location will consist of a 2" PVC pipe and PVC well screen installed from the ground surface down to a desired depth, less than 40' below ground surface (see figure 2). The monitoring wells will be completed by installing a 2' x 2' concrete pad around an 8" diameter steel well cover which will be flush with the ground surface. The surrounding ground surface will then be restored back to original conditions.

A permit to install the soil borings and monitoring wells within the ROWs has been obtained through both the Ingham County Road Commission and the City of Lansing. Drilling techniques to be employed are standard operating procedures.

The Health and Safety of both the Public and drill rig personnel are the number one priority of RACER. There are several processes and safety measures in place to ensure safe and effective completion of the activities to protect the public and workers, including:

- A full-time, on-site, independent environmental and safety consultant to oversee and manage the work crew and equipment.
- All work will be performed in accordance with a Site Specific Health and Safety Plan. This will include establishing a "work zone" that only qualified personnel will be allowed to enter. The "work-zone" will be established by placing physical barriers at safe distances from all moving equipment to protect anyone who may be moving through the area.
- Traffic control measures will be employed, as needed, to maintain a safe flow of traffic through the area.
- To avoid damage to underground utilities, ARCADIS will contact MISSDIG a minimum of 72 hours before drilling activities are scheduled to begin. In addition, ARCADIS will hire a private utility locate contractor to clear the boring locations. ARCADIS also requires drilling contractors to hand clear all boring locations to a minimum of 6 feet below ground surface.
- If needed water will be sprayed around the boring locations to minimize dust levels.

If you have any questions please contact:

RACER Trust:

Toll Free - 855.RACER.411 or

INFO@RACERTrust.org

or Michigan Department of Environmental Quality
Mr. Pete Quackenbush 517-373-7397

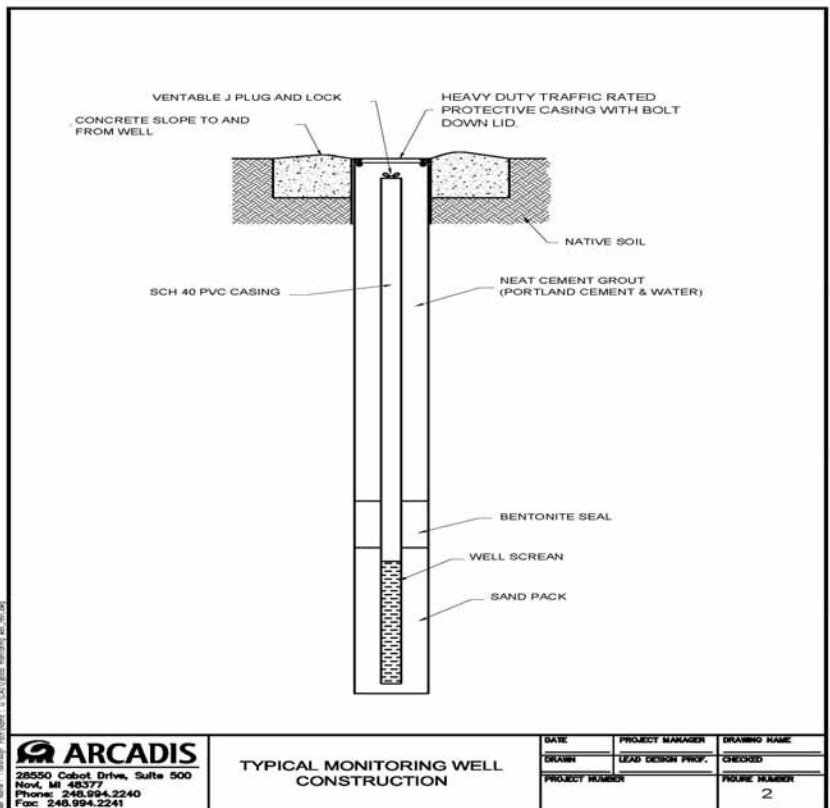
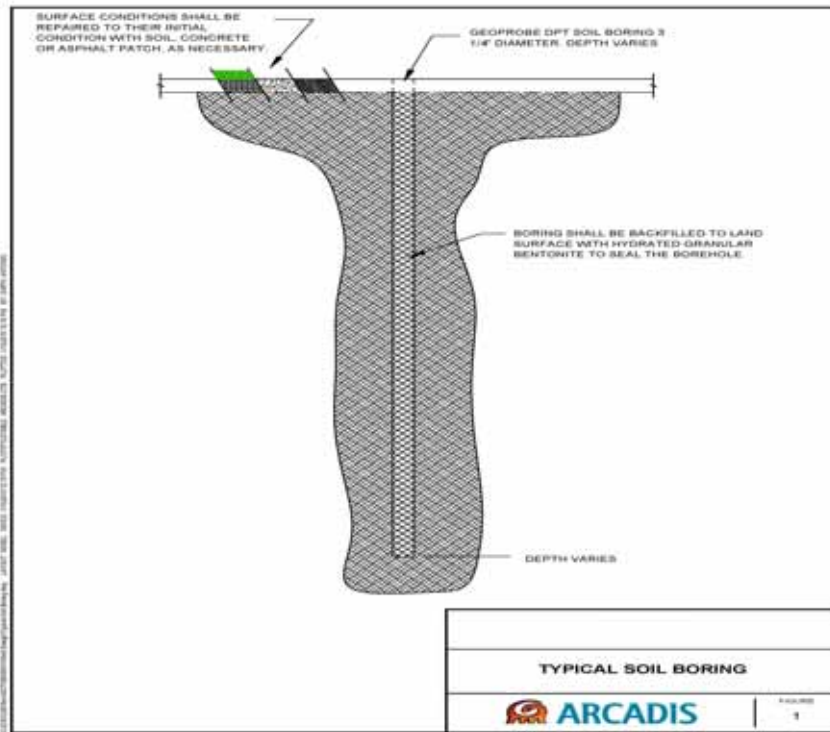
You can find more detailed information about this project by reviewing the project reports, available at the reference desk, available at the public repository in the Capital Area Public Library.



RACER CONTACT INFORMATION

855.RACER.411 | info@RACERTrust.org | 2930 Ecorse Road, Ypsilanti, MI 48198

PROJECT UPDATE



RACER CONTACT INFORMATION

855.RACER.411 | info@RACERTrust.org | 2930 Ecorse Road, Ypsilanti, MI 48198