



Genesee Industrial Land

1243 East Stanley Road

Mount Morris, MI 48458

Inquiry Number: 4978392.9

June 29, 2017

## The EDR Aerial Photo Decade Package



6 Armstrong Road, 4th floor  
Shelton, CT 06484  
Toll Free: 800.352.0050  
[www.edrnet.com](http://www.edrnet.com)

# EDR Aerial Photo Decade Package

06/29/17

**Site Name:**

Genesee Industrial Land  
1243 East Stanley Road  
Mount Morris, MI 48458  
EDR Inquiry # 4978392.9

**Client Name:**

RACER TRUST  
500 Woodward Avenue  
Detroit, MI 48226  
Contact: David Favero



Environmental Data Resources, Inc. (EDR) Aerial Photo Decade Package is a screening tool designed to assist environmental professionals in evaluating potential liability on a target property resulting from past activities. EDR's professional researchers provide digitally reproduced historical aerial photographs, and when available, provide one photo per decade.

**Search Results:**

<b>Year</b>	<b>Scale</b>	<b>Details</b>	<b>Source</b>
2012	1"=500'	Flight Year: 2012	USDA/NAIP
2010	1"=500'	Flight Year: 2010	USDA/NAIP
2009	1"=500'	Flight Year: 2009	USDA/NAIP
2006	1"=500'	Flight Year: 2006	USDA/NAIP
2005	1"=500'	Flight Year: 2005	USDA/NAIP
1999	1"=500'	Acquisition Date: March 27, 1999	USGS/DOQQ
1993	1"=500'	Flight Date: January 01, 1993	USGS
1982	1"=500'	Flight Date: October 25, 1982	USDA
1972	1"=500'	Flight Date: June 05, 1972	USDA
1967	1"=500'	Flight Date: January 01, 1967	USGS
1950	1"=500'	Flight Date: September 06, 1950	USDA
1941	1"=500'	Flight Date: July 04, 1941	USDA
1937	1"=500'	Flight Date: October 31, 1937	USDA

**When delivered electronically by EDR, the aerial photo images included with this report are for ONE TIME USE ONLY. Further reproduction of these aerial photo images is prohibited without permission from EDR. For more information contact your EDR Account Executive.**

**Disclaimer - Copyright and Trademark Notice**

This Report contains certain information obtained from a variety of public and other sources reasonably available to Environmental Data Resources, Inc. It cannot be concluded from this Report that coverage information for the target and surrounding properties does not exist from other sources. NO WARRANTY EXPRESSED OR IMPLIED, IS MADE WHATSOEVER IN CONNECTION WITH THIS REPORT. ENVIRONMENTAL DATA RESOURCES, INC. SPECIFICALLY DISCLAIMS THE MAKING OF ANY SUCH WARRANTIES, INCLUDING WITHOUT LIMITATION, MERCHANTABILITY OR FITNESS FOR A PARTICULAR USE OR PURPOSE. ALL RISK IS ASSUMED BY THE USER. IN NO EVENT SHALL ENVIRONMENTAL DATA RESOURCES, INC. BE LIABLE TO ANYONE, WHETHER ARISING OUT OF ERRORS OR OMISSIONS, NEGLIGENCE, ACCIDENT OR ANY OTHER CAUSE, FOR ANY LOSS OF DAMAGE, INCLUDING, WITHOUT LIMITATION, SPECIAL, INCIDENTAL, CONSEQUENTIAL, OR EXEMPLARY DAMAGES. ANY LIABILITY ON THE PART OF ENVIRONMENTAL DATA RESOURCES, INC. IS STRICTLY LIMITED TO A REFUND OF THE AMOUNT PAID FOR THIS REPORT. Purchaser accepts this Report "AS IS". Any analyses, estimates, ratings, environmental risk levels or risk codes provided in this Report are provided for illustrative purposes only, and are not intended to provide, nor should they be interpreted as providing any facts regarding, or prediction or forecast of, any environmental risk for any property. Only a Phase I Environmental Site Assessment performed by an environmental professional can provide information regarding the environmental risk for any property. Additionally, the information provided in this Report is not to be construed as legal advice.

Copyright 2017 by Environmental Data Resources, Inc. All rights reserved. Reproduction in any media or format, in whole or in part, of any report or map of Environmental Data Resources, Inc., or its affiliates, is prohibited without prior written permission.

EDR and its logos (including Sanborn and Sanborn Map) are trademarks of Environmental Data Resources, Inc. or its affiliates. All other trademarks used herein are the property of their respective owners.

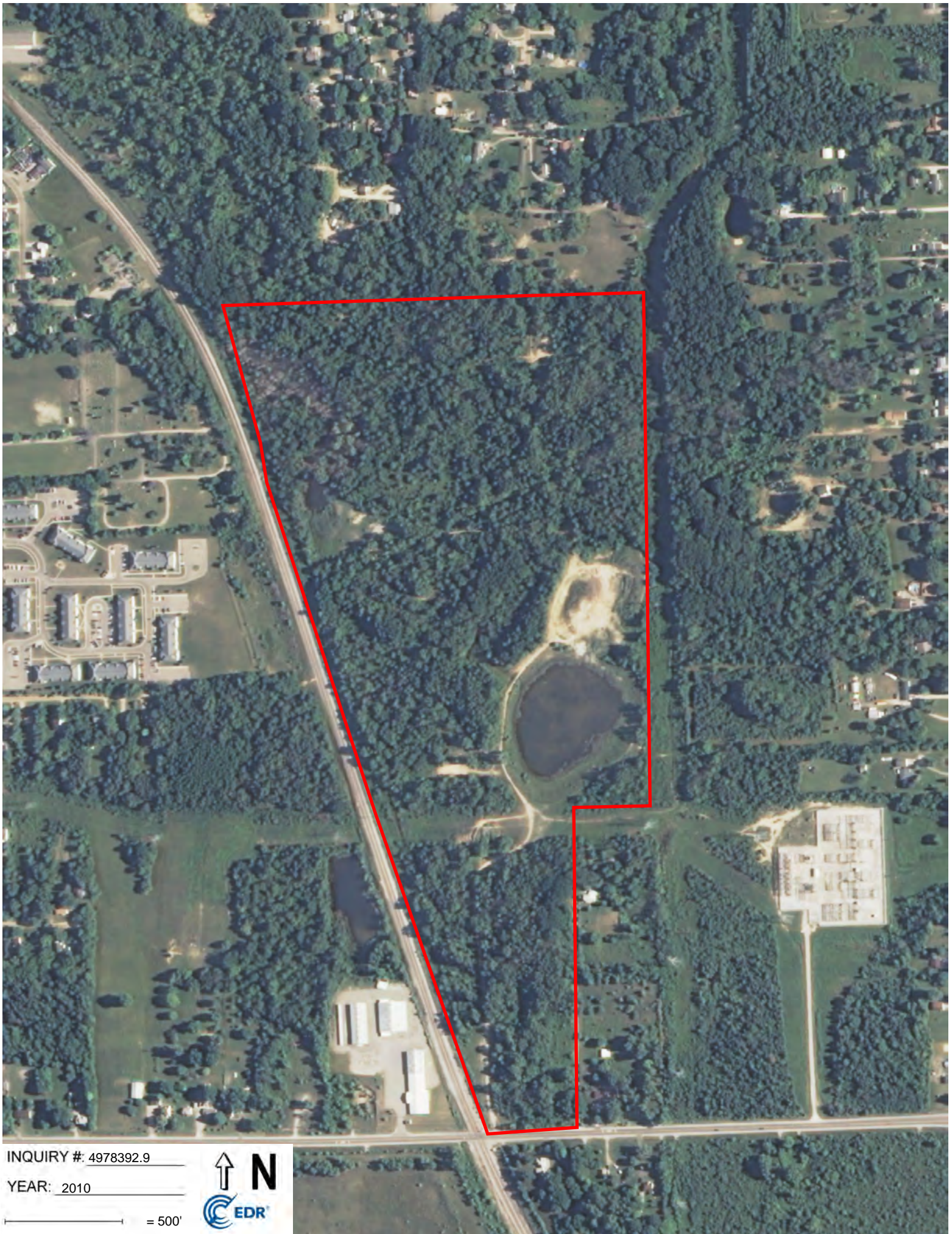


INQUIRY #: 4978392.9

YEAR: 2012

— = 500'





INQUIRY #: 4978392.9

YEAR: 2010

— = 500'





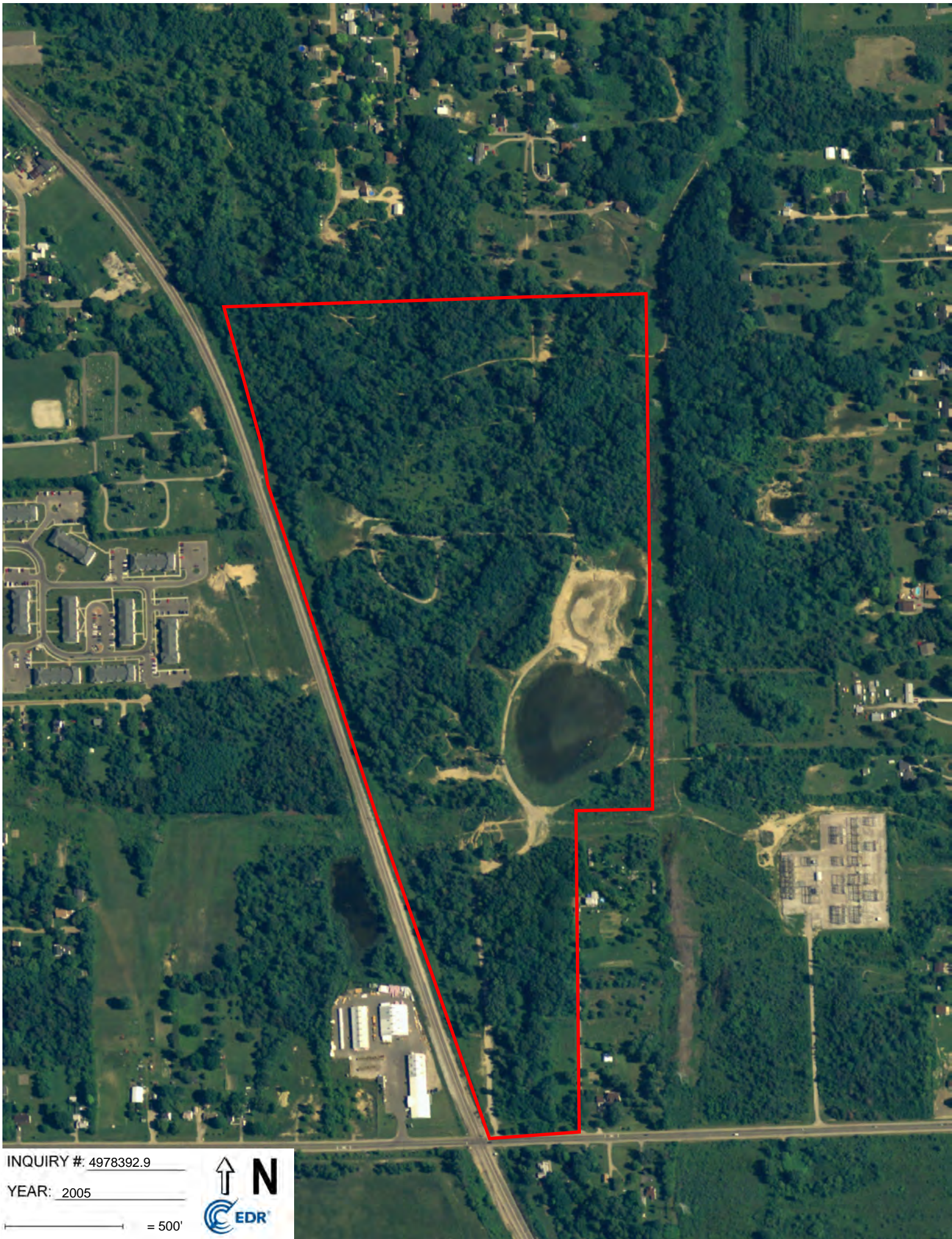


INQUIRY #: 4978392.9

YEAR: 2006

— = 500'





INQUIRY #: 4978392.9

YEAR: 2005

— = 500'





INQUIRY #: 4978392.9

YEAR: 1999

— = 500'





INQUIRY #: 4978392.9

YEAR: 1993

— = 500'





INQUIRY #: 4978392.9

YEAR: 1982

— = 500'





INQUIRY #: 4978392.9

YEAR: 1972

— = 500'





INQUIRY #: 4978392.9

YEAR: 1967

— = 500'







INQUIRY #: 4978392.9

YEAR: 1941

— = 500'





INQUIRY #: 4978392.9

YEAR: 1937

— = 500'

