

Transmitted via email

Mr. Brian Zuber
Senior Environmental Quality Analyst
Emerging Pollutants Section, WRD
Department of Environment, Great Lakes,
and Energy
PO Box 30473
Lansing, MI 48909-7974

Ms. Nicole Sanabria & Ms. Christina Hebert
Geologist and Environmental Quality Analyst
Materials Management Division
Department of Environment, Great Lakes,
and Energy
PO Box 30241
Lansing, MI 48909-7741

RE: Corrective Action Plan – South and West of Site Storm Sewer Evaluation Update
Coldwater Road Site
6220 Horton Street, Mount Morris, MI
MID 005 356 860

Date May 9, 2025

Dear Mr. Zuber, Ms. Sanabria, & Ms. Hebert:

On behalf of Revitalizing Auto Communities Environmental Response (RACER) Trust, Ramboll Americas Engineering Solutions, Inc. (Ramboll) is providing the following update to present results of sampling of storm sewers south and west of the RACER Coldwater Road Facility located at 6220 Horton Street, Mount Morris, Genesee County, Michigan (Site).

Additional sample collection was completed to provide further information to the South of Site Evaluation Letter and Task 1 of the June 3, 2022, Corrective Action Plan (CAP) submitted to the Michigan Department of Environmental, Great Lakes, and Energy (EGLE) Water Resources Division, via MiEnviro to address Violation Notice (No. VN-012757) dated May 4, 2022.

The evaluation was also conducted in response to the analytical results from per- and polyfluoroalkyl substances (PFAS), specifically perfluorooctanesulfonic acid (PFOS), samples collected on September 22, 2021, by EGLE along the Cornwell Drain.

This letter provides a summary of the additional sample collection information related to the storm sewer system along the southern Site boundary east of the middle entry drive and south of Coldwater Road, summarizes the results collected west of the Site from the storm sewer line along the eastern side of Saginaw Road, and provides a summary of the storm water inspection which was conducted during the sample collection. The storm water matrix and figure are included as **Appendix A**.

Storm water inspections have been completed quarterly since August 2019 to monitor the corrective measures performed to the storm water system to mitigate the discharge from the Site of PFAS-impacted water via storm sewers.

Ramboll
2090 Commonwealth Blvd.
Ann Arbor, MI 48105
USA

T 734-761-4000
F 734-761-2050
<https://ramboll.com>

During the storm water inspection conducted on March 20, 2025, no dripping water was observed from the plugs at MH-10E, SS-02, and the plugged clay tile pipe within the SS-02 manhole, so previous plugging efforts continue to prevent discharges of PFAS-impacted water. No flow was observed from the Site in manhole MH-17A so the previous activities to plug the sewer line and seal the section of storm sewer between manholes MH-16 (which is east of MH-17A) and MH-17A continues to prevent discharge of PFAS-impacted water.

During the stormwater inspection, standing water was found in manholes MH-18 and MH-18A through MH-18C. However, no water was observed flowing within or infiltrating into the sewer system. There was no water flowing from inside MH-18A into MH-18, which empties into the 72-inch storm water sewer along Klein Street.

Sample Collection

On March 20, 2025, six storm water samples were collected from the storm water system south of the southern Site boundary. MW-10E-W, SS-14, and SS-23 were collected along Coldwater Road near the southern Site boundary. SS-12, SS-15, and SS-16 were collected along Harry Street south of Coldwater Road from storm water flowing away from the Site (**Figure 1**). A storm water sample was also collected from SS-10 (see **Figure 2** for SS-10 sample location) from the storm sewer line along the eastern side of Saginaw Road west of Site, which was part of the lining activities. This location is sampled to further evaluate the effectiveness of the lining activities.

Prior to collecting the samples for the events there was approximately 0.23 inches of precipitation on March 20, 2025 in the area, and a weekly total of approximately 0.68 inches of precipitation at the time of sampling. The precipitation was measured by an onsite weather station.

The sample location SS-11 on East Kurtz Avenue west of Harry Street (and EGLE's CD-10 sample location) had no flow or standing water and was not sampled. A graduated 5-gallon bucket was used to estimate the flow rate at sample locations SS-14 and SS-15. The approximate flow rate at SS-14 of the municipal stormwater flowing west to east along Coldwater Road was 11 gallons per minute (gpm). During the October 2024 sampling event a flow rate of 6 gpm was recorded at SS-14. The approximate flow rate at SS-15 of the stormwater flowing north to south along Harry Street was 50 gpm. During the October 2024 sampling event a flow rate of 20 gpm was recorded at SS-15.

The sample collection was completed following the protocols set forth in the EGLE Michigan PFAS Action Response Team (MPART) Surface Water PFAS Sampling Guidance dated October 2022 and Ramboll's PFAS Sampling Field Guidance Document Number 1.07.

Samples were collected either by using the direct sampling method of collecting the water directly into the sample container or by using a peristaltic pump and high-density polyethylene tubing that was weighted down with a stainless-steel weight and lowered into the manhole.

The samples were labeled, packed on ice, and shipped via courier under routine chain-of-custody protocols to Merit Laboratories, Inc. (Merit) of East Lansing, Michigan.

Analytical Results

The storm water samples were analyzed for PFAS by method ASTM D7979-19 (no preservative). The analytical results for the recent storm water samples and historical storm water samples collected south of the Site are summarized in **Table 1**, the samples collected west of the Site are summarized in **Table 2**, and the analytical laboratory report is included in **Appendix B**.

During the March 20, 2025 sampling event, the following samples collected along Harry Street from storm water flowing away from the Site contained concentrations above the October 12, 2023 Part 201 Groundwater Generic Cleanup Criteria and Screening Levels and the Rule 57 Surface Water Quality Value of 12 ng/l for PFOS: SS-12 (210 ng/l PFOS), SS-15 (180 ng/l PFOS), and SS-16 (290 ng/l PFOS), and the following storm water samples collected along Coldwater Road near the southern Site boundary contained concentrations above 12 ng/l PFOS: SS-14 (12 ng/l PFOS) and SS-23 (210 ng/l). The sample from MH-10E-W contained a PFOS concentration of 6.5 ng/l.

A field blank sample was not collected during this sampling event.

The PFOS concentrations at MH-10E-W, and SS-14 decreased compared to the last sampling event, and the PFOS concentrations at SS-12, SS-15, SS-16, and SS-23 increased compared to the last sampling event. The results were within range of historical results, except for the results at SS-12, SS-16, and SS-23 which increased compared to the historical results.

The PFOS concentration at SS-10 collected along Saginaw Road west of the Site was 4.6 ng/l, which was consistent with historical post-lining sample results since the lining was completed in December 2021.

Conclusions and Recommendations

The PFOS concentrations in the storm sewer system south of Coldwater Road continue to fluctuate and exhibit inconsistent results. It does appear that plugging activities along the north side of Coldwater Road have decreased the PFOS mass (i.e., a significant reduction in the concentrations detected in the sewers and the flow rate of PFOS-impacted water into the sewers) since storm water modifications began in January 2019.

Given the observed increased PFOS concentration in SS-23, a sample from a new location (SS-24) was collected on May 1, 2025 within the SS-02 manhole. SS-24 was collected from the inlet that flows from the east to the west from the manhole where sample SS-13 is collected. This was done as samples from other lines that enter the manhole had similar concentrations to previous results and a result from this new sampling location will allow for evaluation of whether PFOS-impacted water may be infiltrating the sewer east of the manhole. The results from this additional sample will be submitted when it is received from the laboratory.

Subject to potential revisions based on evaluation of the results of the sample from sample location SS-24, we propose to collect another round of samples from sample location SS-10 west of the Site, and from sample locations SS-12, SS-14, SS-15, SS-16, MH-10E-W, SS-23, and for the next round add SS-13 and new location SS-24 in June 2025. An update similar to this one will be provided within approximately four weeks of receipt of the analytical results from the laboratory.



If you would like a paper copy of any of the attached information let me know. Please contact me at clifford.yantz@ramboll.com or Brendan Mullen with RACER at bmullen@racertrust.org or 201-247-4890, if you have any questions.

Yours sincerely,

RAMBOLL AMERICAS ENGINEERING SOLUTIONS, INC.

Clifford Yantz

Project Manager
1943864 - MIDWEST EAST Resources 056

M 313-333-0211
clifford.yantz@ramboll.com

CC:

Brendan Mullen (RACER Trust)
David Favero (RACER Trust)
Kevin Schneider (Ramboll)
EGLE MMD-HWS Electronic Mailbox

Enclosures:

Table 1 – South of Site Storm Water PFAS Sample Results
Table 2 – West of Site Storm Water PFAS Sample Results
Figure 1 – Storm Water Sewers – Horton Street to Dort Highway
Figure 2 – Storm Water Sewers – West of Site
Appendix A – Storm Water Monitoring Matrix and Figure
Appendix B – Analytical Laboratory Report

TABLES



TABLE 1
RACER Trust - Coldwater Road Peregrine Facilities
Per-and Polyfluoroalkyl Substances Sampling Results - Storm Water Samples South Portion of Site

Coldwater Road - Storm Water Samples - South Portion of Site

Perfluorinated Compound	Well/Sample ID:	EGLE Part 201 Generic Cleanup Criteria and Screening Levels GSI	SS-02 (Storm Sewer)	SS-02 (DUP-1) (Storm Sewer)	SS-02 (Storm Sewer)	SS-04 (Storm Sewer)	SS-DUP-2/SS-04 (Storm Sewer)	SS-08 (Storm Sewer)	SS-11 (Storm Water)
	Sample Date:		11/12/2018	11/12/2018	12/21/2021	3/19/2020	3/19/2020	8/28/2020	4/14/2022
	Precipitation Inches		0.0"	0.0"	0.0"	0.01"	0.01"	1.58"	0.0"
Perfluorobutanoic Acid (PFBA)	--	--	20	20	13	<100	<100	<10	<9.8
Perfluoropentanoic Acid (PFPeA)	--	--	<10	<10	6.1	<10	<10	<4.1	<3.9
4:2 Fluorotelomer Sulfonic Acid (4:2 FTSA)	--	--	<10	<10	<2.1	<10	<10	<2.1	<2.0
Perfluorohexanoic Acid (PFHxA)	--	--	10	10	4.5	<10	<10	<2.1	<2.0
Perfluorobutane Sulfonic Acid (PFBS)	670,000	--	<10	<10	3.1	<10	<10	<2.1	82
Perfluoroheptanoic Acid (PFHpA)	--	--	<10	<10	2.2	<10	<10	<2.1	<2.0
Perfluoropentane Sulfonic Acid (PFPeS)	--	--	<10	<10	<2.1	<10	<10	<2.1	<2.0
6:2 Fluorotelomer Sulfonic Acid (6:2 FTSA)	--	--	<10	<10	<4.2	<10	<10	<2.1	<2.0
Perfluorooctanoic Acid (PFOA)	170	--	20	20	4.8	<10	<10	1.9 J	<2.0
Perfluorohexane Sulfonic Acid (PFHxS)	210	--	20	20	3.7	<10	<10	<2.1	<2.0
Perfluorohexane Sulfonic Acid - LN (PFHxS-LN)	--	--	20	20	2.8	<10	<10	<2.1	<2.0
Perfluorohexane Sulfonic Acid - BR (PFHxS-BR)	--	--	<10	<10	<2.1	<10	<10	<2.1	<2.0
Perfluorononanoic Acid (PFNA)	30	--	<10	<10	<2.1	<10	<10	<2.1	<2.0
8:2 Fluorotelomer Sulfonic Acid (8:2 FTSA)	--	--	<10	<10	<4.2	<10	<10	<2.1	<2.0
Perfluoroheptane Sulfonic Acid (PFHpS)	--	--	10	<10	<2.1	<10	<10	<2.1	<2.0
Perfluorodecanoic Acid (PFDA)	--	--	<10	<10	<2.1	<10	<10	<2.1	<2.0
N-methyl Perfluorooctanesulfonamidoacetic Acid (N-MeFOSAA)	--	--	<10	<10	<2.1	<10	<10	<2.1	<2.0
N-Ethyl Perfluorooctane Sulfonamidoacetic Acid (EtFOSAA)	--	--	<10	<10	<4.2	<10	<10	<4.1	<3.9
Perfluorooctane Sulfonic Acid (PFOS)	12	--	1520	1250	86	<10	<10	7.3	4.8
Perfluorooctane Sulfonic Acid (PFOS-LN)	--	--	1160	950	62	<10	<10	4.1	<2.0
Perfluorooctane Sulfonic Acid (PFOS-BR)	--	--	380	280	24	<10	<10	2.8	4.1
Perfluoroundecanoic Acid (PFUnDA)	--	--	<10	<10	<2.1	<10	<10	<2.1	<2.0
Perfluorononane Sulfonic Acid (PFNS)	--	--	<10	<10	<2.1	<10	<10	<2.1	<2.0
Perfluorododecanoic Acid (PFDoDA)	--	--	<10	<10	<2.1	<10	<10	<2.1	<2.0
Perfluorodecane Sulfonic Acid (PFDS)	--	--	<10	<10	<2.1	<10	<10	<2.1	<2.0
Perfluorotridecanoic Acid (PFTrDA)	--	--	<10	<10	<2.1	<10	<10	<2.1	<2.0
Perfluorooctane Sulfonamide (FOSA)	--	--	<10	<10	<2.1	<10	<10	<2.1	<2.0
Perfluorotetradecanoic Acid (PFTeDA)	--	--	<10	<10	<4.2	<10	<10	<4.1	<3.9
11-chloroeicosafuoro-3-oxaundecane-1-sulfonic acid (11Cl-PF3OUdS)	--	--	--	--	<2.1	<10	<10	<2.1	<2.0
9-chlorohexadecafluoro-3-oxanone1-sulfonic acid (9Cl-PF3ONS)	--	--	--	--	<2.1	<10	<10	<2.1	<2.0
4,8-dioxa-3H-perfluorononanoic acid (ADONA)	--	--	--	--	<2.1	<10	<10	<2.1	<2.0
Hexafluoropropylene oxide dimer (HFPO-DA)	--	--	--	--	<10	<10	<10	<2.1	<3.9
3-Perfluoroheptyl propanoic acid (FHpPA (7:3 FTCA))	--	--	--	--	--	--	--	--	--
3-Perfluoropentyl propanoic acid (FPePA (5:3 FTCA))	--	--	--	--	--	--	--	--	--
3-Perfluoropropyl propanoic acid (FPrPA (3:3 FTCA))	--	--	--	--	--	--	--	--	--
Perfluorobutanesulfonamide (PFBSA)	--	--	--	--	--	--	--	--	--
Perfluoro-4-ethylcyclohexanesulfonate (PFECHS)	--	--	--	--	--	--	--	--	--
Perfluorohexanesulfonamide (PFHxSA)	--	--	--	--	--	--	--	--	--
Total Per-and Polyfluoroalkyl Substances	--	--	1600.0	1320.0	123.4	0.0	0.0	9.2	86.8

Notes

- 1) Detections in **bold**.
- 2) Concentrations in ng/L.
- 3) < = Not detected at specified reporting limit.
- 4) -- = Not analyzed/No criteria.
- 5) Dup = Duplicate sample.
- 6) EGLE Part 201 Groundwater Generic Cleanup Criteria and Screening Levels, October 12, 2023.
- 7) Concentration above the groundwater surface water interface (GSI) criteria are highlighted in yellow.
- 8) B - Compound also found in associated method blank.
- 9) I - Matrix interference with internal standard.
- 10) J - Estimated value less than reporting limit, but greater than MDL.
- 11) X - Elevated reporting limit due to matrix interference.
- 12) Light gray header is most recent sampling event result.
- 13) QA/QC Samples were either not detected above the reporting limit or below the EGLE Part 201 Groundwater Generic Cleanup Criteria.



TABLE 1
RACER Trust - Coldwater Road Peregrine Facilities
Per-and Polyfluoroalkyl Substances Sampling Results - Storm Water Samples South Portion of Site

Coldwater Road - Storm Water Samples - South Portion of Site

Perfluorinated Compound	Well/Sample ID:	EGLE Part 201 Generic Cleanup Criteria and Screening Levels GSI	SS-12	SS-12	SS-12	SS-12	SS-12	SS-12	SS-12
			(Storm Sewer)	(Storm Sewer)	(Storm Sewer)	(Storm Sewer)	(Storm Sewer)	(Storm Sewer)	(Storm Sewer)
Sample Date:			4/14/2022	6/22/2022	8/4/2022	1/4/2023	3/23/2023	6/27/2023	8/7/2023
Precipitation Inches			0.0"	0.03"	1.72"	0.15"	0.15"	0.42"	0.64"
Perfluorobutanoic Acid (PFBA)	--	--	<9.8	<11	<10	<10.0	<10	<10.0	<15 X
Perfluoropentanoic Acid (PFPeA)	--	--	2.1 J	4.0 J	4.2	1.1 J	<4.0	2.9 J	<3.9
4:2 Fluorotelomer Sulfonic Acid (4:2 FTSA)	--	--	<2.0	<2.1	<2.0	<2.0	<2.0	<2.0	<2.0
Perfluorohexanoic Acid (PFHxA)	--	--	3.3	5.2	4.2	2.6	2.0 J	2.7	<2.0
Perfluorobutane Sulfonic Acid (PFBS)	670,000	--	2.0	5.6	3.9	2.6	<2.0	4.4	2.3
Perfluoroheptanoic Acid (PFHpA)	--	--	2.1	2.7	2.7	<2.0	<2.0	1.7	<2.0
Perfluoropentane Sulfonic Acid (PFPeS)	--	--	<2.0	<2.1	<2.0	<2.0	<2.0	<2.0	<2.0
6:2 Fluorotelomer Sulfonic Acid (6:2 FTSA)	--	--	<2.0	<2.1	<2.0	<2.0	<2.0	<2.0	<2.0
Perfluorooctanoic Acid (PFOA)	170	--	5.8	11	7.5	2.1	<2.0	3.6	4.2
Perfluorohexane Sulfonic Acid (PFHxS)	210	--	2.8	3.5	3.0	1.6 J	<2.0	<2.0	<2.0
Perfluorohexane Sulfonic Acid - LN (PFHxS-LN)	--	--	1.7 J	2.8	2.4	<2.0	<2.0	<2.0	<2.0
Perfluorohexane Sulfonic Acid - BR (PFHxS-BR)	--	--	<2.0	<2.1	<2.0	<2.0	<2.0	<2.0	<2.0
Perfluorononanoic Acid (PFNA)	30	--	<2.0	<2.1	<2.0	<2.0	<2.0	<2.0	<2.0
8:2 Fluorotelomer Sulfonic Acid (8:2 FTSA)	--	--	<2.0	<2.1	<2.0	<2.0	<2.0	<2.0	<2.0
Perfluoroheptane Sulfonic Acid (PFHpS)	--	--	<2.0	<2.1	<2.0	<2.0	<2.0	<2.0	<2.0
Perfluorodecanoic Acid (PFDA)	--	--	<2.0	<2.1	<2.0	<2.0	<2.0	<2.0	<2.0
N-methyl Perfluorooctanesulfonamidoacetic Acid (N-MeFOSAA)	--	--	<2.0	<2.1	<2.0	<2.0	<2.0	<2.0	<2.0
N-Ethyl Perfluorooctane Sulfonamidoacetic Acid (EtFOSAA)	--	--	<3.9	<4.2	<4.1	<4.0	<4.0	<4.0	<3.9
Perfluorooctane Sulfonic Acid (PFOS)	12	--	140	91	190	86	34	64	93
Perfluorooctane Sulfonic Acid (PFOS-LN)	--	--	100	63	140	68	28	46	71
Perfluorooctane Sulfonic Acid (PFOS-BR)	--	--	34	28	44	17	6	17	19
Perfluoroundecanoic Acid (PFUNDA)	--	--	<2.0	<2.1	<2.0	<2.0	<2.0	<2.0	<2.0
Perfluorononane Sulfonic Acid (PFNS)	--	--	<2.0	<2.1	<2.0	<2.0	<2.0	<2.0	<2.0
Perfluorododecanoic Acid (PFDDoDA)	--	--	<2.0	<2.1	<2.0	<2.0	<2.0	<2.0	<2.0
Perfluorodecane Sulfonic Acid (PFDS)	--	--	<2.0	<2.1	<2.0	<2.0	<2.0	<2.0	<2.0
Perfluorotridecanoic Acid (PFTrDA)	--	--	<2.0	<2.1	<2.0	<2.0	<2.0	<2.0	<2.0
Perfluorooctane Sulfonamide (FOSA)	--	--	<2.0	<2.1	<2.0	<2.0	<2.0	<2.0	<2.0
Perfluorotetradecanoic Acid (PFTeDA)	--	--	<3.9	<4.2	<4.1	<4.0	<4.0	<4.0	<3.9
11-chloroeicosafluoro-3-oxaundecane-1-sulfonic acid (11Cl-PF3OUdS)	--	--	<2.0	<2.1	<2.0	<2.0	<2.0	<2.0	<2.0
9-chlorohexadecafluoro-3-oxanone-1-sulfonic acid (9Cl-PF3ONS)	--	--	<2.0	<2.1	<2.0	<2.0	<2.0	<2.0	<2.0
4,8-dioxa-3H-perfluorononanoic acid (ADONA)	--	--	<2.0	<2.1	<2.0	<2.0	<2.0	<2.0	<2.0
Hexafluoropropylene oxide dimer (HFPO-DA)	--	--	<3.9	<11	<10	<10.0	<2.0	<2.0	<2.0
3-Perfluoroheptyl propanoic acid (FHpPA (7:3 FTCA))	--	--	--	--	--	--	--	<4.0	<3.9
3-Perfluoropentyl propanoic acid (FPePA (5:3 FTCA))	--	--	--	--	--	--	--	<4.0	<3.9
3-Perfluoropropyl propanoic acid (FPrPA (3:3 FTCA))	--	--	--	--	--	--	--	<4.0	<3.9
Perfluorobutanesulfonamide (PFBSA)	--	--	--	--	--	--	--	<2.0	<2.0
Perfluoro-4-ethylcyclohexanesulfonate (PFECHS)	--	--	--	--	--	--	--	19	17
Perfluorohexanesulfonamide (PFHxSA)	--	--	--	--	--	--	--	<2.0	<2.0
Total Per-and Polyfluoroalkyl Substances	--	--	158.1	123.0	215.5	96.0	36.0	98.3	116.5

Notes

- 1) Detections in **bold**.
- 2) Concentrations in ng/L.
- 3) < = Not detected at specified reporting limit.
- 4) -- = Not analyzed/No criteria.
- 5) Dup = Duplicate sample.
- 6) EGLE Part 201 Groundwater Generic Cleanup Criteria and Screening Levels, October 12, 2023.
- 7) Concentration above the groundwater surface water interface (GSI) criteria are highlighted in yellow.
- 8) B - Compound also found in associated method blank.
- 9) I - Matrix interference with internal standard.
- 10) J - Estimated value less than reporting limit, but greater than MDL.
- 11) X - Elevated reporting limit due to matrix interference.
- 12) Light gray header is most recent sampling event result.
- 13) QA/QC Samples were either not detected above the reporting limit or below the EGLE Part 201 Groundwater Generic Cleanup Criteria.



TABLE 1
RACER Trust - Coldwater Road Peregrine Facilities
Per-and Polyfluoroalkyl Substances Sampling Results - Storm Water Samples South Portion of Site

Coldwater Road - Storm Water Samples - South Portion of Site

Perfluorinated Compound	Well/Sample ID:	EGLE Part 201 Generic Cleanup Criteria and Screening Levels GSI	SS-12 (Storm Sewer)	SS-12 (Storm Sewer)	SS-12-20241014 (Storm Sewer)	SS-12-20250320 (Storm Sewer)	SS-13 (Storm Sewer)	SS-13 (Storm Sewer)
	Sample Date:		12/18/2023	6/17/2024	10/14/2024	3/20/2025	5/16/2022	8/4/2022
		Precipitation Inches	0.24"	0.45"	0.70"	0.23"	0.71"	1.72"
Perfluorobutanoic Acid (PFBA)	--	--	<9.8	8.8 J	4.4 J	<10	<39	<10
Perfluoropentanoic Acid (PFPeA)	--	--	<3.9	1.7 J	<3.9	<4.1	<3.9	1.6 J
4:2 Fluorotelomer Sulfonic Acid (4:2 FTSA)	--	--	<2.0	<2.1	<2.0	<2.0	<2.0	<2.0
Perfluorohexanoic Acid (PFHxA)	--	--	2.0	4.3	2.7	3.2	2.5	3.2
Perfluorobutane Sulfonic Acid (PFBS)	670,000	--	2.1	2.5	1.9 J	1.7 J	<2.0	3.5
Perfluoroheptanoic Acid (PFHpA)	--	--	<3.9	1.4 J	<2.0	1.4 J	<2.0	1.8 J
Perfluoropentane Sulfonic Acid (PFPeS)	--	--	<2.0	<2.1	0.84 J	1.8 J	<2.0	<2.0
6:2 Fluorotelomer Sulfonic Acid (6:2 FTSA)	--	--	<2.0	<2.1	<2.0	<2.0	<2.0	<2.0
Perfluorooctanoic Acid (PFOA)	170	--	1.5 J	4.7	1.9 J	3.0	<2.0	4.8
Perfluorohexane Sulfonic Acid (PFHxS)	210	--	<2.0	3.0	2.3	4.3	<2.0	3.5
Perfluorohexane Sulfonic Acid - LN (PFHxS-LN)	--	--	<2.0	2.3	1.9 J	3.4	<2.0	2.5
Perfluorohexane Sulfonic Acid - BR (PFHxS-BR)	--	--	<2.0	<2.1	<2.0	<2.0	<2.0	<2.0
Perfluorononanoic Acid (PFNA)	30	--	<2.0	<2.1	<2.0	<2.0	<2.0	<2.0
8:2 Fluorotelomer Sulfonic Acid (8:2 FTSA)	--	--	<2.0	<2.1	<2.0	<2.0	<2.0	<2.0
Perfluoroheptane Sulfonic Acid (PFHpS)	--	--	<2.0	<2.1	<2.0	1.8 J	<2.0	<2.0
Perfluorodecanoic Acid (PFDA)	--	--	<2.0	<2.1	<2.0	<2.0	<2.0	<2.0
N-methyl Perfluorooctanesulfonamidoacetic Acid (N-MeFOSAA)	--	--	<2.0	<2.1	<2.0	<2.0	<2.0	<2.0
N-Ethyl Perfluorooctane Sulfonamidoacetic Acid (EtFOSAA)	--	--	<3.9	<4.1	<3.9	<4.1	<3.9	<4.0
Perfluorooctane Sulfonic Acid (PFOS)	12	--	22	100	85	210	20	25
Perfluorooctane Sulfonic Acid (PFOS-LN)	--	--	16	74	62	150	16	17
Perfluorooctane Sulfonic Acid (PFOS-BR)	--	--	5.7	25	22	51	4.0	6.7
Perfluoroundecanoic Acid (PFUnDA)	--	--	<2.0	<2.1	<2.0	<2.0	<2.0	<2.0
Perfluorononane Sulfonic Acid (PFNS)	--	--	<2.0	<2.1	<2.0	<2.0	<2.0	<2.0
Perfluorododecanoic Acid (PFDDoDA)	--	--	<2.0	<2.1	<2.0	<2.0	<2.0	<2.0
Perfluorodecane Sulfonic Acid (PFDS)	--	--	<2.0	<2.1	<2.0	<2.0	<2.0	<2.0
Perfluorotridecanoic Acid (PFTrDA)	--	--	<2.0	<2.1	<2.0	<2.0	<2.0	<2.0
Perfluorooctane Sulfonamide (FOSA)	--	--	<2.0	<2.1	<2.0	<2.0	<2.0	<2.0
Perfluorotetradecanoic Acid (PFTeDA)	--	--	<3.9	<4.1	<3.9	<4.1	<3.9	<4.0
11-chloroicosafuoro-3-oxaundecane-1-sulfonic acid (11Cl-PF30UdS)	--	--	<2.0	<2.1	<2.0	<2.0	<2.0	<2.0
9-chlorohexadecafluoro-3-oxanone1-sulfonic acid (9Cl-PF30NS)	--	--	<2.0	<2.1	<2.0	<2.0	<2.0	<2.0
4,8-dioxa-3H-perfluorononanoic acid (ADONA)	--	--	<2.0	<2.1	<2.0	<2.0	<2.0	<2.0
Hexafluoropropylene oxide dimer (HFPO-DA)	--	--	<9.8	<10	<9.8	<10	<3.9	<10
3-Perfluoroheptyl propanoic acid (FHpPA (7:3 FTCA))	--	--	<9.8	<10	<9.8	<10	--	--
3-Perfluoropentyl propanoic acid (FPePA (5:3 FTCA))	--	--	<9.8	<10	<9.8	<10	--	--
3-Perfluoropropyl propanoic acid (FPrPA (3:3 FTCA))	--	--	<9.8	<10	<9.8	<10	--	--
Perfluorobutanesulfonamide (PFBSA)	--	--	0.71 J	0.81 J	<2.0	<2.0	--	--
Perfluoro-4-ethylcyclohexanesulfonate (PFECHS)	--	--	11	41	38	120	--	--
Perfluorohexanesulfonamide (PFHxSA)	--	--	<2.0	<2.1	<2.0	<2.0	--	--
Total Per-and Polyfluoroalkyl Substances	--	--	39.3	168.2	137.0	347.2	22.5	43.4

Notes

- 1) Detections in **bold**.
- 2) Concentrations in ng/L.
- 3) < = Not detected at specified reporting limit.
- 4) -- = Not analyzed/No criteria.
- 5) Dup = Duplicate sample.
- 6) EGLE Part 201 Groundwater Generic Cleanup Criteria and Screening Levels, October 12, 2023.
- 7) Concentration above the groundwater surface water interface (GSI) criteria are highlighted in yellow.
- 8) B - Compound also found in associated method blank.
- 9) I - Matrix interference with internal standard.
- 10) J - Estimated value less than reporting limit, but greater than MDL.
- 11) X - Elevated reporting limit due to matrix interference.
- 12) Light gray header is most recent sampling event result.
- 13) QA/QC Samples were either not detected above the reporting limit or below the EGLE Part 201 Groundwater Generic Cleanup Criteria.



TABLE 1
RACER Trust - Coldwater Road Peregrine Facilities
Per-and Polyfluoroalkyl Substances Sampling Results - Storm Water Samples South Portion of Site

Coldwater Road - Storm Water Samples - South Portion of Site

Perfluorinated Compound	Well/Sample ID:	EGLE Part 201 Generic Cleanup Criteria and Screening Levels GSI	SS-14 (Storm Sewer)	SS-14 (Storm Sewer)	SS-14 (Storm Sewer)	SS-14 (Storm Sewer)	SS-14 (Storm Sewer)	SS-14 (Storm Sewer)	SS-14 (Storm Sewer)
	Sample Date:		5/16/2022	6/22/2022	8/4/2022	1/4/2023	3/23/2023	6/27/2023	8/7/2023
	Precipitation Inches		0.71"	0.03"	1.72"	0.15"	0.15"	0.42"	0.64"
Perfluorobutanoic Acid (PFBA)	--		14	12	<10	<10	<10	<9.7	<21 X
Perfluoropentanoic Acid (PFPeA)	--		2.1 J	5.2	3.5 J	<4.0	<4.0	3.0 J	<3.8
4:2 Fluorotelomer Sulfonic Acid (4:2 FTSA)	--		<2.1	<2.1	<2.0	<2.0	<2.0	<1.9	<1.9
Perfluorohexanoic Acid (PFHxA)	--		4.3	7.0	3.5	2.2	2.0	2.7	3.0
Perfluorobutane Sulfonic Acid (PFBS)	670,000		2.8	6.7	3.5	2.5	<2.0	6.3	3.3
Perfluoroheptanoic Acid (PFHpA)	--		2.3	5.0	2.9	<2.0	<2.0	2.4	2.7
Perfluoropentane Sulfonic Acid (PFPeS)	--		<2.1	<2.1	<2.0	<2.0	<2.0	<1.9	<1.9
6:2 Fluorotelomer Sulfonic Acid (6:2 FTSA)	--		<2.1	<2.1	<2.0	<2.0	<2.0	<1.9	<1.9
Perfluorooctanoic Acid (PFOA)	170		8.4	15	5.1	2.1	<2.0	4.7	6.0
Perfluorohexane Sulfonic Acid (PFHxS)	210		1.8 J	4.5	2.1	<2.0	<2.0	<1.9	<1.9
Perfluorohexane Sulfonic Acid - LN (PFHxS-LN)	--		<2.1	3.7	<2.0	<2.0	<2.0	<1.9	<1.9
Perfluorohexane Sulfonic Acid - BR (PFHxS-BR)	--		<2.1	<2.1	<2.0	<2.0	<2.0	<1.9	<1.9
Perfluorononanoic Acid (PFNA)	30		<2.1	<2.1	<2.0	<2.0	<2.0	<1.9	<1.9
8:2 Fluorotelomer Sulfonic Acid (8:2 FTSA)	--		<2.1	<2.1	<2.0	<2.0	<2.0	<1.9	<1.9
Perfluoroheptane Sulfonic Acid (PFHpS)	--		<2.1	<2.1	<2.0	<2.0	<2.0	<1.9	<1.9
Perfluorodecanoic Acid (PFDA)	--		<2.1	<2.1	<2.0	<2.0	<2.0	<1.9	<1.9
N-methyl Perfluorooctanesulfonamidoacetic Acid (N-MeFOSAA)	--		<2.1	<2.1	<2.0	<2.0	<2.0	<1.9	<1.9
N-Ethyl Perfluorooctane Sulfonamidoacetic Acid (EtFOSAA)	--		<4.1	<4.1	<4.0	<4.0	<4.0	<3.9	<3.8
Perfluorooctane Sulfonic Acid (PFOS)	12		30	39	21	12	6.3	24	33
Perfluorooctane Sulfonic Acid (PFOS-LN)	--		20	24	13	7.1	3.8	14	22
Perfluorooctane Sulfonic Acid (PFOS-BR)	--		9.1	14	8	5.4	2.5	9.3	10
Perfluoroundecanoic Acid (PFUNDA)	--		<2.1	<2.1	<2.0	<2.0	<2.0	<1.9	<1.9
Perfluorononane Sulfonic Acid (PFNS)	--		<2.1	<2.1	<2.0	<2.0	<2.0	<1.9	<1.9
Perfluorododecanoic Acid (PFDoDA)	--		<2.1	<2.1	<2.0	<2.0	<2.0	<1.9	<1.9
Perfluorodecane Sulfonic Acid (PFDS)	--		<2.1	<2.1	<2.0	<2.0	<2.0	<1.9	<1.9
Perfluorotridecanoic Acid (PFTrDA)	--		<2.1	<2.1	<2.0	<2.0	<2.0	<1.9	<1.9
Perfluorooctane Sulfonamide (FOSA)	--		<2.1	<2.1	<2.0	<2.0	<2.0	<1.9	<1.9
Perfluorotetradecanoic Acid (PFTeDA)	--		<4.1	<4.1	<4.0	<4.0	<4.0	<3.9	<3.8
11-chloroeicosafluoro-3-oxaundecane-1-sulfonic acid (11Cl-PF3OUdS)	--		<2.1	<2.1	<2.0	<2.0	<2.0	<1.9	<1.9
9-chlorohexadecafluoro-3-oxanone-1-sulfonic acid (9Cl-PF3ONS)	--		<2.1	<2.1	<2.0	<2.0	<2.0	<1.9	<1.9
4,8-dioxa-3H-perfluorononanoic acid (ADONA)	--		<2.1	<2.1	<2.0	<2.0	<2.0	<1.9	<1.9
Hexafluoropropylene oxide dimer (HFPO-DA)	--		<4.1	<10	<10	<10	<2.0	<1.9	<1.9
3-Perfluoroheptyl propanoic acid (FHpPA (7:3 FTCA))	--		--	--	--	--	--	<3.9	<3.8
3-Perfluoropentyl propanoic acid (FPePA (5:3 FTCA))	--		--	--	--	--	--	<3.9	<3.8
3-Perfluoropropyl propanoic acid (FPrPA (3:3 FTCA))	--		--	--	--	--	--	<3.9	<3.8
Perfluorobutanesulfonamide (PFBSA)	--		--	--	--	--	--	<1.9	<1.9
Perfluoro-4-ethylcyclohexanesulfonate (PFECHS)	--		--	--	--	--	--	9.0	5.4
Perfluorohexanesulfonamide (PFHxSA)	--		--	--	--	--	--	<1.9	<1.9
Total Per-and Polyfluoroalkyl Substances	--		65.7	94.4	41.6	18.8	8.3	52.1	53.4

Notes

- 1) Detections in **bold**.
- 2) Concentrations in ng/L.
- 3) < = Not detected at specified reporting limit.
- 4) -- = Not analyzed/No criteria.
- 5) Dup = Duplicate sample.
- 6) EGLE Part 201 Groundwater Generic Cleanup Criteria and Screening Levels, October 12, 2023.
- 7) Concentration above the groundwater surface water interface (GSI) criteria are highlighted in yellow.
- 8) B - Compound also found in associated method blank.
- 9) I - Matrix interference with internal standard.
- 10) J - Estimated value less than reporting limit, but greater than MDL.
- 11) X - Elevated reporting limit due to matrix interference.
- 12) Light gray header is most recent sampling event result.
- 13) QA/QC Samples were either not detected above the reporting limit or below the EGLE Part 201 Groundwater Generic Cleanup Criteria.



TABLE 1
RACER Trust - Coldwater Road Peregrine Facilities
Per-and Polyfluoroalkyl Substances Sampling Results - Storm Water Samples South Portion of Site

Coldwater Road - Storm Water Samples - South Portion of Site

Perfluorinated Compound	Well/Sample ID:	EGLE Part 201 Generic Cleanup Criteria and Screening Levels GSI	SS-14 (Storm Sewer)	SS-14 (Storm Sewer)	SS-14-20241014 (Storm Sewer)	SS-14-20250320 (Storm Sewer)	SS-15 (Storm Sewer)	SS-15 (Storm Sewer)	SS-15 (Storm Sewer)
	Sample Date:		12/18/2023	6/17/2024	10/14/2024	3/20/2025	8/4/2022	1/4/2023	3/23/2023
		Precipitation Inches	0.24"	0.45"	0.70"	0.23"	1.72"	0.15"	0.15"
Perfluorobutanoic Acid (PFBA)	--	--	<10	7.9 J	<11	<9.8	<10	<10	<9.8
Perfluoropentanoic Acid (PFPeA)	--	--	<4.1	1.8 J	1.5 J	<3.9	4.1 J	1.8 J	<3.9
4:2 Fluorotelomer Sulfonic Acid (4:2 FTSA)	--	--	<2.1	<2.0	<2.1	<2.0	<2.1	<2.0	<2.0
Perfluorohexanoic Acid (PFHxA)	--	--	1.7 J	2.7	2.2	<2.0	3.5	3.2	1.7 J
Perfluorobutane Sulfonic Acid (PFBS)	670,000	--	2.3	3.1	2.3	<2.0	3.5	3.1	1.7 J
Perfluoroheptanoic Acid (PFHpA)	--	--	<4.1	0.91 J	1.2 J	<2.0	1.8 J	1.6 J	<2.0
Perfluoropentane Sulfonic Acid (PFPeS)	--	--	<2.1	<2.0	<2.1	<2.0	<2.1	<2.0	<2.0
6:2 Fluorotelomer Sulfonic Acid (6:2 FTSA)	--	--	<2.1	<2.0	<2.1	<2.0	<2.1	<2.0	<2.0
Perfluorooctanoic Acid (PFOA)	170	--	1.6 J	3.4	2.3	<2.0	5.5	2.9	<2.0
Perfluorohexane Sulfonic Acid (PFHxS)	210	--	<2.1	1.7 J	<2.1	<2.0	2.9	<2.0	<2.0
Perfluorohexane Sulfonic Acid - LN (PFHxS-LN)	--	--	<2.1	1.1 J	<2.1	<2.0	2.2	<2.0	<2.0
Perfluorohexane Sulfonic Acid - BR (PFHxS-BR)	--	--	<2.1	<2.0	<2.1	<2.0	<2.1	<2.0	<2.0
Perfluorononanoic Acid (PFNA)	30	--	<2.1	1.2 J	<2.1	<2.0	<2.1	<2.0	<2.0
8:2 Fluorotelomer Sulfonic Acid (8:2 FTSA)	--	--	<2.1	<2.0	<2.1	<2.0	<2.1	<2.0	<2.0
Perfluoroheptane Sulfonic Acid (PFHpS)	--	--	<2.1	<2.0	<2.1	<2.0	<2.1	<2.0	<2.0
Perfluorodecanoic Acid (PFDA)	--	--	<2.1	<2.0	<2.1	<2.0	<2.1	<2.0	<2.0
N-methyl Perfluorooctanesulfonamidoacetic Acid (N-MeFOSAA)	--	--	<2.1	<2.0	<2.1	<2.0	<2.1	<2.0	<2.0
N-Ethyl Perfluorooctane Sulfonamidoacetic Acid (EtFOSAA)	--	--	<4.1	<4.0	<4.2	<3.9	<4.1	<4.1	<3.9
Perfluorooctane Sulfonic Acid (PFOS)	12	--	17	52	50	12	220	100	29
Perfluorooctane Sulfonic Acid (PFOS-LN)	--	--	12	38	36	8.7	170	72	22
Perfluorooctane Sulfonic Acid (PFOS-BR)	--	--	4.3	13	13	2.8	50	27	6.8
Perfluoroundecanoic Acid (PFUNDA)	--	--	<2.1	<2.0	<2.1	<2.0	<2.1	<2.0	<2.0
Perfluorononane Sulfonic Acid (PFNS)	--	--	<2.1	<2.0	<2.1	<2.0	<2.1	<2.0	<2.0
Perfluorododecanoic Acid (PFDoDA)	--	--	<2.1	<2.0	<2.1	<2.0	<2.1	<2.0	<2.0
Perfluorodecane Sulfonic Acid (PFDS)	--	--	<2.1	<2.0	<2.1	<2.0	<2.1	<2.0	<2.0
Perfluorotridecanoic Acid (PFTrDA)	--	--	<2.1	<2.0	<2.1	<2.0	<2.1	<2.0	<2.0
Perfluorooctane Sulfonamide (FOSA)	--	--	<2.1	<2.0	<2.1	<2.0	<2.1	<2.0	<2.0
Perfluorotetradecanoic Acid (PFTeDA)	--	--	<4.1	<4.0	<4.2	<3.9	<4.1	<4.1	<4.1
11-chloroeicosafluoro-3-oxaundecane-1-sulfonic acid (11Cl-PF3OUdS)	--	--	<2.1	<2.0	<2.1	<2.0	<2.1	<2.0	<2.0
9-chlorohexadecafluoro-3-oxanone-1-sulfonic acid (9Cl-PF3ONS)	--	--	<2.1	<2.0	<2.1	<2.0	<2.1	<2.0	<2.0
4,8-dioxa-3H-perfluorononanoic acid (ADONA)	--	--	<2.1	<2.0	<2.1	<2.0	<2.1	<2.0	<2.0
Hexafluoropropylene oxide dimer (HFPO-DA)	--	--	<10	<10	<11	<9.8	<10	<10	<2.0
3-Perfluoroheptyl propanoic acid (FHpPA (7:3 FTCA))	--	--	<10	<10	<11	<9.8	--	--	--
3-Perfluoropentyl propanoic acid (FPePA (5:3 FTCA))	--	--	<10	<10	<11	<9.8	--	--	--
3-Perfluoropropyl propanoic acid (FPrPA (3:3 FTCA))	--	--	<10	<10	<11	<9.8	--	--	--
Perfluorobutanesulfonamide (PFBSA)	--	--	0.70 J	<2.0	<2.1	<2.0	--	--	--
Perfluoro-4-ethylcyclohexanesulfonate (PFECHS)	--	--	4.6	12	14	4.0	--	--	--
Perfluorohexanesulfonamide (PFHxSA)	--	--	<2.1	<2.0	<2.1	<2.0	--	--	--
Total Per-and Polyfluoroalkyl Substances	--	--	27.9	86.7	73.5	16.0	241.3	112.6	32.4

Notes

- 1) Detections in **bold**.
- 2) Concentrations in ng/L.
- 3) < = Not detected at specified reporting limit.
- 4) -- = Not analyzed/No criteria.
- 5) Dup = Duplicate sample.
- 6) EGLE Part 201 Groundwater Generic Cleanup Criteria and Screening Levels, October 12, 2023.
- 7) Concentration above the groundwater surface water interface (GSI) criteria are highlighted in yellow.
- 8) B - Compound also found in associated method blank.
- 9) I - Matrix interference with internal standard.
- 10) J - Estimated value less than reporting limit, but greater than MDL.
- 11) X - Elevated reporting limit due to matrix interference.
- 12) Light gray header is most recent sampling event result.
- 13) QA/QC Samples were either not detected above the reporting limit or below the EGLE Part 201 Groundwater Generic Cleanup Criteria.



TABLE 1
RACER Trust - Coldwater Road Peregrine Facilities
Per-and Polyfluoroalkyl Substances Sampling Results - Storm Water Samples South Portion of Site

Coldwater Road - Storm Water Samples - South Portion of Site

Perfluorinated Compound	Well/Sample ID:	EGLE Part 201 Generic Cleanup Criteria and Screening Levels GSI	SS-15 (Storm Sewer)	SS-15 (Storm Sewer)	SS-15 (Storm Sewer)	SS-15-20241014 (Storm Sewer)	SS-15-20250320 (Storm Sewer)	SS-16 (Storm Sewer)	SS-16 (Storm Sewer)
	Sample Date:		6/27/2023	12/18/2023	6/17/2024	10/14/2024	3/20/2025	1/4/2023	3/23/2023
	Precipitation Inches		0.42"	0.24"	0.45"	0.70"	0.23"	0.15"	0.15"
Perfluorobutanoic Acid (PFBA)	--	--	10	<9.8	<9.6	<9.7	<9.9	<10	<11
Perfluoropentanoic Acid (PFPeA)	--	--	<3.9	<3.9	<4.6 X	2.1 J	<4.0	<4.2	<4.3
4:2 Fluorotelomer Sulfonic Acid (4:2 FTSA)	--	--	<2.0	<2.0	<1.9	<1.9	<2.0	<2.1	<2.1
Perfluorohexanoic Acid (PFHxA)	--	--	1.9 J	2.0	3.2	2.6	3.2	2.8	<2.1
Perfluorobutane Sulfonic Acid (PFBS)	670,000	--	4.3	1.4 J	1.9	1.9 J	2.3	2.3	<2.1
Perfluoroheptanoic Acid (PFHpA)	--	--	<2.0	<3.9	1.0 J	<1.9	1.3 J	<2.1	<2.1
Perfluoropentane Sulfonic Acid (PFPeS)	--	--	<2.0	<2.0	<1.9	<1.9	1.3 J	<2.1	<2.1
6:2 Fluorotelomer Sulfonic Acid (6:2 FTSA)	--	--	<2.0	<2.0	<1.9	<1.9	<2.0	<2.1	<2.1
Perfluorooctanoic Acid (PFOA)	170	--	3.2	0.99 J	3.6	1.6 J	2.7	3.2	<2.1
Perfluorohexane Sulfonic Acid (PFHxS)	210	--	<2.0	<2.0	0.99 J	1.9 J	2.5	<2.1	<2.1
Perfluorohexane Sulfonic Acid - LN (PFHxS-LN)	--	--	<2.0	<2.0	0.96 J	1.4 J	2.5	<2.1	<2.1
Perfluorohexane Sulfonic Acid - BR (PFHxS-BR)	--	--	<2.0	<2.0	<1.9	<1.9	<2.0	<2.1	<2.1
Perfluorononanoic Acid (PFNA)	30	--	<2.0	<2.0	<1.9	<1.9	<2.0	<2.1	<2.1
8:2 Fluorotelomer Sulfonic Acid (8:2 FTSA)	--	--	<2.0	<2.0	<1.9	<1.9	<2.0	<2.1	<2.1
Perfluoroheptane Sulfonic Acid (PFHpS)	--	--	<2.0	<2.0	<1.9	<1.9	<2.0	<2.1	<2.1
Perfluorodecanoic Acid (PFDA)	--	--	<2.0	<2.0	<1.9	<1.9	0.77 J	<2.1	<2.1
N-methyl Perfluorooctanesulfonamidoacetic Acid (N-MeFOSAA)	--	--	<2.0	<2.0	<1.9	<1.9	<2.0	<2.1	<2.1
N-Ethyl Perfluorooctane Sulfonamidoacetic Acid (EtFOSAA)	--	--	<3.9	<3.9	<3.8	<3.9	<4.0	<4.2	<4.3
Perfluorooctane Sulfonic Acid (PFOS)	12	--	86	23	100	73	180	99	27
Perfluorooctane Sulfonic Acid (PFOS-LN)	--	--	56	17	79	52	130	72	21
Perfluorooctane Sulfonic Acid (PFOS-BR)	--	--	28	5.3	21	19	38	27	5.1
Perfluoroundecanoic Acid (PFUnDA)	--	--	<2.0	<2.0	<1.9	<1.9	<2.0	<2.1	<2.1
Perfluorononane Sulfonic Acid (PFNS)	--	--	<2.0	<2.0	<1.9	<1.9	<2.0	<2.1	<2.1
Perfluorododecanoic Acid (PFDoDA)	--	--	<2.0	<2.0	<1.9	<1.9	<2.0	<2.1	<2.1
Perfluorodecane Sulfonic Acid (PFDS)	--	--	<2.0	<2.0	<1.9	<1.9	<2.0	<2.1	<2.1
Perfluorotridecanoic Acid (PFTrDA)	--	--	<2.0	<2.0	<1.9	<1.9	<2.0	<2.1	<2.1
Perfluorooctane Sulfonamide (FOSA)	--	--	<2.0	<2.0	<1.9	<1.9	<2.0	<2.1	<2.1
Perfluorotetradecanoic Acid (PFTeDA)	--	--	<3.9	<3.9	<3.8	<3.9	<4.0	<4.2	<4.3
11-chloroeicosafluoro-3-oxaundecane-1-sulfonic acid (11Cl-PF3OUdS)	--	--	<2.0	<2.0	<1.9	<1.9	<2.0	<2.1	<2.1
9-chlorohexadecafluoro-3-oxanone-1-sulfonic acid (9Cl-PF3ONS)	--	--	<2.0	<2.0	<1.9	<1.9	<2.0	<2.1	<2.1
4,8-dioxa-3H-perfluorononanoic acid (ADONA)	--	--	<2.0	<2.0	<1.9	<1.9	<2.0	<2.1	<2.1
Hexafluoropropylene oxide dimer (HFPO-DA)	--	--	<2.0	<9.8	<9.6	<9.7	<9.9	<10	<2.0
3-Perfluoroheptyl propanoic acid (FHpPA (7:3 FTCA))	--	--	<3.9	<9.8	<9.6	<9.7	<9.9	--	--
3-Perfluoropentyl propanoic acid (FPePA (5:3 FTCA))	--	--	<3.9	<9.8	<9.6	<9.7	<9.9	--	--
3-Perfluoropropyl propanoic acid (FPrPA (3:3 FTCA))	--	--	<3.9	<9.8	<9.6	<9.7	<9.9	--	--
Perfluorobutanesulfonamide (PFBSA)	--	--	1.2 J	0.62 J	<1.9	<1.9	<2.0	--	--
Perfluoro-4-ethylcyclohexanesulfonate (PFECHS)	--	--	20	6.0	27	27	89	--	--
Perfluorohexanesulfonamide (PFHxSA)	--	--	<2.0	<2.0	<1.9	<1.9	<2.0	--	--
Total Per-and Polyfluoroalkyl Substances	--	--	126.6	34.0	137.7	110.1	283.1	107.3	27.0

Notes

- 1) Detections in **bold**.
- 2) Concentrations in ng/L.
- 3) < = Not detected at specified reporting limit.
- 4) -- = Not analyzed/No criteria.
- 5) Dup = Duplicate sample.
- 6) EGLE Part 201 Groundwater Generic Cleanup Criteria and Screening Levels, October 12, 2023.
- 7) Concentration above the groundwater surface water interface (GSI) criteria are highlighted in yellow.
- 8) B - Compound also found in associated method blank.
- 9) I - Matrix interference with internal standard.
- 10) J - Estimated value less than reporting limit, but greater than MDL.
- 11) X - Elevated reporting limit due to matrix interference.
- 12) Light gray header is most recent sampling event result.
- 13) QA/QC Samples were either not detected above the reporting limit or below the EGLE Part 201 Groundwater Generic Cleanup Criteria.



TABLE 1
RACER Trust - Coldwater Road Peregrine Facilities
Per-and Polyfluoroalkyl Substances Sampling Results - Storm Water Samples South Portion of Site

Coldwater Road - Storm Water Samples - South Portion of Site

Perfluorinated Compound	Well/Sample ID:	EGLE Part 201 Generic Cleanup Criteria and Screening Levels GSI	SS-16 (Storm Sewer)	SS-16 (Storm Sewer)	SS-16 (Storm Sewer)	SS-16-20241014 (Storm Sewer)	SS-16-20250320 (Storm Sewer)	SS-19 (Storm Sewer)	SS-20 (Storm Sewer)
	Sample Date:		6/27/2023	12/18/2023	6/17/2024	10/14/2024	3/20/2025	3/23/2023	3/23/2023
	Precipitation Inches		0.42"	0.24"	0.45"	0.70"	0.23"	0.15"	0.15"
Perfluorobutanoic Acid (PFBA)	--	10	<9.4	<9.4	<10	4.5 J	<15 X	<10	<9.7
Perfluoropentanoic Acid (PFPeA)	--	<3.8	<3.8	2.8 J	2.2 J	3.6 J	1.9 J	<3.9	<3.9
4:2 Fluorotelomer Sulfonic Acid (4:2 FTSA)	--	<1.9	<1.9	<2.0	<1.9	<2.1	<2.0	<1.9	<1.9
Perfluorohexanoic Acid (PFHxA)	--	<1.9	2.1	2.6	2.4	4.6	2.0 J	<1.9	<1.9
Perfluorobutane Sulfonic Acid (PFBS)	670,000	2.5	1.2 J	1.5 J	1.7 J	1.9 J	<2.0	<1.9	<1.9
Perfluoroheptanoic Acid (PFHpA)	--	<1.9	<3.8	0.96 J	<1.9	2.5	1.5 J	<2.3 X	<2.3 X
Perfluoropentane Sulfonic Acid (PFPeS)	--	<1.9	<1.9	<2.0	<1.9	<2.1	<2.0	<1.9	<1.9
6:2 Fluorotelomer Sulfonic Acid (6:2 FTSA)	--	<1.9	<1.9	<2.0	<1.9	<2.1	<2.0	4.3	4.3
Perfluorooctanoic Acid (PFOA)	170	2.0	1.6 J	3.4	1.9	6.2	<2.0	<1.9	<1.9
Perfluorohexane Sulfonic Acid (PFHxS)	210	<1.9	<1.9	1.6 J	1.8 J	3.9	<2.0	<1.9	<1.9
Perfluorohexane Sulfonic Acid - LN (PFHxS-LN)	--	<1.9	<1.9	<2.0	1.2 J	2.8	<2.0	<1.9	<1.9
Perfluorohexane Sulfonic Acid - BR (PFHxS-BR)	--	<1.9	<1.9	<2.0	<1.9	<2.1	<2.0	<1.9	<1.9
Perfluorononanoic Acid (PFNA)	30	<1.9	<1.9	<2.0	<1.9	1.9 J	<2.0	<1.9	<1.9
8:2 Fluorotelomer Sulfonic Acid (8:2 FTSA)	--	<1.9	<1.9	<2.0	<1.9	<2.1	<2.0	<1.9	<1.9
Perfluoroheptane Sulfonic Acid (PFHpS)	--	<1.9	<1.9	<2.0	1.1 J	1.9 J	<2.0	<1.9	<1.9
Perfluorodecanoic Acid (PFDA)	--	<1.9	<1.9	<2.0	<1.9	1.7 J	<2.0	<1.9	<1.9
N-methyl Perfluorooctanesulfonamidoacetic Acid (N-MeFOSAA)	--	<1.9	<1.9	<2.0	<1.9	<2.1	<2.0	<1.9	<1.9
N-Ethyl Perfluorooctane Sulfonamidoacetic Acid (EtFOSAA)	--	<3.8	<3.8	<4.0	<3.8	<4.1	<4.0	<3.9	<3.9
Perfluorooctane Sulfonic Acid (PFOS)	12	63	30	82	59	290	5.6	3.6	3.6
Perfluorooctane Sulfonic Acid (PFOS-LN)	--	39	23	66	42	250	3.3	1.9 J	1.9 J
Perfluorooctane Sulfonic Acid (PFOS-BR)	--	23	7.3	13	16	34	2.2	<1.9	<1.9
Perfluoroundecanoic Acid (PFUnDA)	--	<1.9	<1.9	<2.0	<1.9	<2.1	<2.0	<1.9	<1.9
Perfluorononane Sulfonic Acid (PFNS)	--	<1.9	<1.9	<2.0	<1.9	<2.1	<2.0	<1.9	<1.9
Perfluorododecanoic Acid (PFDoDA)	--	<1.9	<1.9	<2.0	<1.9	<2.1	<2.0	<1.9	<1.9
Perfluorodecane Sulfonic Acid (PFDS)	--	<1.9	<1.9	<2.0	<1.9	<2.1	<2.0	<1.9	<1.9
Perfluorotridecanoic Acid (PFTrDA)	--	<1.9	<1.9	<2.0	<1.9	<2.1	<2.0	<1.9	<1.9
Perfluorooctane Sulfonamide (FOSA)	--	<1.9	<1.9	<2.0	<1.9	<2.1	<2.0	<1.9	<1.9
Perfluorotetradecanoic Acid (PFTeDA)	--	<3.8	<3.8	<4.0	<3.8	<4.1	<4.0	<3.9	<3.9
11-chloroeicosafluoro-3-oxaundecane-1-sulfonic acid (11Cl-PF3OUdS)	--	<1.9	<1.9	<2.0	<1.9	<2.1	<2.0	<1.9	<1.9
9-chlorohexadecafluoro-3-oxanone-1-sulfonic acid (9Cl-PF3ONS)	--	<1.9	<1.9	<2.0	<1.9	<2.1	<2.0	<1.9	<1.9
4,8-dioxa-3H-perfluorononanoic acid (ADONA)	--	<1.9	<1.9	<2.0	<1.9	<2.1	<2.0	<1.9	<1.9
Hexafluoropropylene oxide dimer (HFPO-DA)	--	<1.9	<9.4	<10	<9.5	<10	<2.0	<1.9	<1.9
3-Perfluoroheptyl propanoic acid (FHpPA (7:3 FTCA))	--	<3.8	<9.4	<10	<9.5	<10	--	--	--
3-Perfluoropentyl propanoic acid (FPePA (5:3 FTCA))	--	<3.8	<9.4	<10	<9.5	<10	--	--	--
3-Perfluoropropyl propanoic acid (FPrPA (3:3 FTCA))	--	<3.8	<9.4	<10	<9.5	<10	--	--	--
Perfluorobutanesulfonamide (PFBSA)	--	<1.9	0.62 J	<2.0	<1.9	<2.1	--	--	--
Perfluoro-4-ethylcyclohexanesulfonate (PFECHS)	--	15	9.1	17	25	78	--	--	--
Perfluorohexanesulfonamide (PFHxSA)	--	<1.9	<1.9	<2.0	<1.9	<2.1	--	--	--
Total Per-and Polyfluoroalkyl Substances	--	92.5	44.6	111.9	99.6	396.2	11.0	7.9	7.9

Notes

- 1) Detections in **bold**.
- 2) Concentrations in ng/L.
- 3) < = Not detected at specified reporting limit.
- 4) -- = Not analyzed/No criteria.
- 5) Dup = Duplicate sample.
- 6) EGLE Part 201 Groundwater Generic Cleanup Criteria and Screening Levels, October 12, 2023.
- 7) Concentration above the groundwater surface water interface (GSI) criteria are highlighted in yellow.
- 8) B - Compound also found in associated method blank.
- 9) I - Matrix interference with internal standard.
- 10) J - Estimated value less than reporting limit, but greater than MDL.
- 11) X - Elevated reporting limit due to matrix interference.
- 12) Light gray header is most recent sampling event result.
- 13) QA/QC Samples were either not detected above the reporting limit or below the EGLE Part 201 Groundwater Generic Cleanup Criteria.



TABLE 1
RACER Trust - Coldwater Road Peregrine Facilities
Per-and Polyfluoroalkyl Substances Sampling Results - Storm Water Samples South Portion of Site

Coldwater Road - Storm Water Samples - South Portion of Site

Perfluorinated Compound	Well/Sample ID:	EGLE Part 201 Generic Cleanup Criteria and Screening Levels GSI	SS-22 (Storm Sewer)	SS-23 (Storm Sewer)	SS-23 (Storm Sewer)	SS-23 (Storm Sewer)	SS-23-20241014 (Storm Sewer)	SS-23-20250320 (Storm Sewer)
	Sample Date:		8/7/2023	8/7/2023	12/18/2023	6/17/2024	10/14/2024	3/20/2025
	Precipitation Inches		0.64"	0.64"	0.24"	0.45"	0.70"	0.23"
Perfluorobutanoic Acid (PFBA)	--	--	<10	<15 X	<9.6	6.8 J	5.7 J	<10.0
Perfluoropentanoic Acid (PFPeA)	--	--	<4.0	2.2 J	<3.8	2.0 J	1.6 J	<4.0
4:2 Fluorotelomer Sulfonic Acid (4:2 FTSA)	--	--	<2.0	<2.0	<1.9	<2.0	<2.1	<2.0
Perfluorohexanoic Acid (PFHxA)	--	--	2.0 J	1.8 J	1.5 J	3.9	3.0	4.2
Perfluorobutane Sulfonic Acid (PFBS)	670,000	--	2.3	2.5	2.2	2.6	2.3	2.4
Perfluoroheptanoic Acid (PFHpA)	--	--	<2.0	1.9 J	<3.8	0.82 J	1.2 J	<2.0
Perfluoropentane Sulfonic Acid (PFPeS)	--	--	<2.0	<2.0	<1.9	<2.0	0.89 J	1.4 J
6:2 Fluorotelomer Sulfonic Acid (6:2 FTSA)	--	--	<2.0	<2.0	<1.9	<2.0	<2.1	<2.0
Perfluorooctanoic Acid (PFOA)	170	--	3.2	5.3	1.6 J	4.1	2.3	2.7
Perfluorohexane Sulfonic Acid (PFHxS)	210	--	<2.0	<2.0	1.1 J	3.1	2.5	5.0
Perfluorohexane Sulfonic Acid - LN (PFHxS-LN)	--	--	<2.0	<2.0	1.1 J	2.0	1.9 J	3.9
Perfluorohexane Sulfonic Acid - BR (PFHxS-BR)	--	--	<2.0	<2.0	<1.9	<2.0	<2.1	<2.0
Perfluorononanoic Acid (PFNA)	30	--	<2.0	<2.0	<1.9	0.98 J	0.97 J	<2.0
8:2 Fluorotelomer Sulfonic Acid (8:2 FTSA)	--	--	<2.0	<2.0	<1.9	<2.0	<2.1	<2.0
Perfluoroheptane Sulfonic Acid (PFHpS)	--	--	<2.0	<2.0	<1.9	1.0 J	<2.1	<2.0
Perfluorodecanoic Acid (PFDA)	--	--	<2.0	<2.0	<1.9	<2.0	0.64 J	0.66 J
N-methyl Perfluorooctanesulfonamidoacetic Acid (N-MeFOSAA)	--	--	<2.0	<2.0	<1.9	<2.0	<2.1	<2.0
N-Ethyl Perfluorooctane Sulfonamidoacetic Acid (EtFOSAA)	--	--	<4.0	<3.9	<3.8	<3.9	<4.1	<2.0
Perfluorooctane Sulfonic Acid (PFOS)	12	--	320	60	32	92	120	210
Perfluorooctane Sulfonic Acid (PFOS-LN)	--	--	260	45	22	66	86	150
Perfluorooctane Sulfonic Acid (PFOS-BR)	--	--	61	14	9.4	23	29	52
Perfluoroundecanoic Acid (PFUnDA)	--	--	<2.0	<2.0	<1.9	<2.0	<2.1	<2.0
Perfluorononane Sulfonic Acid (PFNS)	--	--	<2.0	<2.0	<1.9	<2.0	<2.1	<2.0
Perfluorododecanoic Acid (PFDoDA)	--	--	<2.0	<2.0	<1.9	<2.0	<2.1	<2.0
Perfluorodecane Sulfonic Acid (PFDS)	--	--	<2.0	<2.0	<1.9	<2.0	<2.1	<2.0
Perfluorotridecanoic Acid (PFTrDA)	--	--	<2.0	<2.0	<1.9	<2.0	<2.1	<2.0
Perfluorooctane Sulfonamide (FOSA)	--	--	<2.0	<2.0	<1.9	<2.0	<2.1	<2.0
Perfluorotetradecanoic Acid (PFTeDA)	--	--	<4.0	<3.9	<3.8	<3.9	<4.1	<4.0
11-chloroicosafuoro-3-oxaundecane-1-sulfonic acid (11Cl-PF30UdS)	--	--	<2.0	<2.0	<1.9	<2.0	<2.1	<2.0
9-chlorohexadecafluoro-3-oxanone1-sulfonic acid (9Cl-PF30NS)	--	--	<2.0	<2.0	<1.9	<2.0	<2.1	<2.0
4,8-dioxa-3H-perfluorononanoic acid (ADONA)	--	--	<2.0	<2.0	<1.9	<2.0	<2.1	<2.0
Hexafluoropropylene oxide dimer (HFPO-DA)	--	--	<2.0	<2.0	<9.6	<9.8	<10	<10
3-Perfluoroheptyl propanoic acid (FHpPA (7:3 FTCA))	--	--	<4.0	<3.9	<9.6	<9.8	<10	<10
3-Perfluoropentyl propanoic acid (FPePA (5:3 FTCA))	--	--	<4.0	<3.9	<9.6	<9.8	<10	<10
3-Perfluoropropyl propanoic acid (FPrPA (3:3 FTCA))	--	--	<4.0	<3.9	<9.6	<9.8	<10	<10
Perfluorobutanesulfonamide (PFBSA)	--	--	<2.0	<2.0	0.74 J	<2.0	<2.1	<2.0
Perfluoro-4-ethylcyclohexanesulfonate (PFECHS)	--	--	49	14	20	51	49	120
Perfluorohexanesulfonamide (PFHxSA)	--	--	<2.0	<2.0	<1.9	<2.0	<2.1	<2.0
Total Per-and Polyfluoroalkyl Substances	--	--	376.5	87.7	59.1	168.3	190.1	346.4

Notes

- 1) Detections in **bold**.
- 2) Concentrations in ng/L.
- 3) < = Not detected at specified reporting limit.
- 4) -- = Not analyzed/No criteria.
- 5) Dup = Duplicate sample.
- 6) EGLE Part 201 Groundwater Generic Cleanup Criteria and Screening Levels, October 12, 2023.
- 7) Concentration above the groundwater surface water interface (GSI) criteria are highlighted in yellow.
- 8) B - Compound also found in associated method blank.
- 9) I - Matrix interference with internal standard.
- 10) J - Estimated value less than reporting limit, but greater than MDL.
- 11) X - Elevated reporting limit due to matrix interference.
- 12) Light gray header is most recent sampling event result.
- 13) QA/QC Samples were either not detected above the reporting limit or below the EGLE Part 201 Groundwater Generic Cleanup Criteria.



TABLE 1
RACER Trust - Coldwater Road Peregrine Facilities
Per-and Polyfluoroalkyl Substances Sampling Results - Storm Water Samples South Portion of Site

Coldwater Road - Storm Water Samples - South Portion of Site

Perfluorinated Compound	Well/Sample ID:	EGLE Part 201 Generic Cleanup Criteria and Screening Levels GSI	MH-10E (Storm Sewer)	MH-10E (Storm Sewer)	MH-10E-W (Storm Sewer)	MH-10E-W (Storm Sewer)	MH-10E-W (Storm Sewer)	MH-10E-W (Storm Sewer)	MH-10E-W (Storm Sewer)
	Sample Date:		3/19/2020	8/3/2020	8/3/2020	12/18/2020	3/11/2021	8/4/2022	1/4/2023
		Precipitation Inches	0.01"	1.02"	1.02"	0.01"	0.07"	1.72"	0.15"
Perfluorobutanoic Acid (PFBA)	--	--	<9.8	<9.9	<9.8	<10	<10	<9.8	<9.8
Perfluoropentanoic Acid (PFPeA)	--	--	<9.8	1.4 J	1.3 J	<4.2	<4.1	3.5 J	<3.9
4:2 Fluorotelomer Sulfonic Acid (4:2 FTSA)	--	--	<9.8	<2.0	<2.0	<2.1	<2.1	<2.0	<2.0
Perfluorohexanoic Acid (PFHxA)	--	--	<9.8	2.9	2.2	<2.1	<2.1	3.2	2.9
Perfluorobutane Sulfonic Acid (PFBS)	670,000	--	<9.8	1.9 J	4.0	4.7	<2.1	3.5	1.9 J
Perfluoroheptanoic Acid (PFHpA)	--	--	<9.8	2.0	1.6 J	<2.1	<2.1	2.1	1.4 J
Perfluoropentane Sulfonic Acid (PFPeS)	--	--	<9.8	<2.0	<2.0	<2.1	<2.1	<2.0	<2.0
6:2 Fluorotelomer Sulfonic Acid (6:2 FTSA)	--	--	<9.8	<2.0	<2.0	<2.1	<2.1	<2.0	<2.0
Perfluorooctanoic Acid (PFOA)	170	--	<9.8	4.8	5.8	<2.1	<2.1	6.6	2.7
Perfluorohexane Sulfonic Acid (PFHxS)	210	--	<9.8	<2.0	2.2	<2.1	<2.1	<2.0	<2.0
Perfluorohexane Sulfonic Acid - LN (PFHxS-LN)	--	--	<9.8	<2.0	1.7 J	<2.1	<2.1	<2.0	<2.0
Perfluorohexane Sulfonic Acid - BR (PFHxS-BR)	--	--	<9.8	<2.0	<2.0	<2.1	<2.1	<2.0	<2.0
Perfluorononanoic Acid (PFNA)	30	--	<9.8	<2.0	<2.0	<2.1	<2.1	<2.0	<2.0
8:2 Fluorotelomer Sulfonic Acid (8:2 FTSA)	--	--	<9.8	<2.0	<2.0	<2.1	<2.1	<2.0	<2.0
Perfluoroheptane Sulfonic Acid (PFHpS)	--	--	<9.8	<2.0	<2.0	<2.1	<2.1	<2.0	<2.0
Perfluorodecanoic Acid (PFDA)	--	--	<9.8	<2.0	<2.0	<2.1	<2.1	<2.0	<2.0
N-methyl Perfluorooctanesulfonamidoacetic Acid (N-MeFOSAA)	--	--	<9.8	<2.0	<2.0	<2.1	<2.1	<2.0	<2.0
N-Ethyl Perfluorooctane Sulfonamidoacetic Acid (EtFOSAA)	--	--	<9.8	<3.9	<3.9	<4.2	<4.1	<3.9	<3.9
Perfluorooctane Sulfonic Acid (PFOS)	12	--	70	61	39	10	3.2	15	8.1
Perfluorooctane Sulfonic Acid (PFOS-LN)	--	--	49	44	24	3.5	<2.1	8.3	4.5
Perfluorooctane Sulfonic Acid (PFOS-BR)	--	--	19	14	12	5.9	<2.1	6.1	3.4
Perfluoroundecanoic Acid (PFUNDA)	--	--	<9.8	<2.0	<2.0	<2.1	<2.1	<2.0	<2.0
Perfluorononane Sulfonic Acid (PFNS)	--	--	<9.8	<2.0	<2.0	<2.1	<2.1	<2.0	<2.0
Perfluorododecanoic Acid (PFDDoDA)	--	--	<9.8	<2.0	<2.0	<2.1	<2.1	<2.0	<2.0
Perfluorodecane Sulfonic Acid (PFDS)	--	--	<9.8	<2.0	<2.0	<2.1	<2.1	<2.0	<2.0
Perfluorotridecanoic Acid (PFTrDA)	--	--	<9.8	<2.0	<2.0	<2.1	<2.1	<2.0	<2.0
Perfluorooctane Sulfonamide (FOSA)	--	--	<9.8	<2.0	<2.0	<2.1	<2.1	<2.0	<2.0
Perfluorotetradecanoic Acid (PFTeDA)	--	--	<9.8	<3.9	<3.9	<4.2	<4.1	<3.9	<3.9
11-chloroeicosafluoro-3-oxaundecane-1-sulfonic acid (11Cl-PF3OUdS)	--	--	<9.8	<2.0	<2.0	<2.1	<2.1	<2.0	<2.0
9-chlorohexadecafluoro-3-oxanone-1-sulfonic acid (9Cl-PF3ONS)	--	--	<9.8	<2.0	<2.0	<2.1	<2.1	<2.0	<2.0
4,8-dioxa-3H-perfluorononanoic acid (ADONA)	--	--	<9.8	<2.0	<2.0	<2.1	<2.1	<2.0	<2.0
Hexafluoropropylene oxide dimer (HFPO-DA)	--	--	<9.8	<2.0	<2.0	<2.0	<2.1	<9.8	<9.8
3-Perfluoroheptyl propanoic acid (FHpPA (7:3 FTCA))	--	--	--	--	--	--	--	--	--
3-Perfluoropentyl propanoic acid (FPePA (5:3 FTCA))	--	--	--	--	--	--	--	--	--
3-Perfluoropropyl propanoic acid (FPrPA (3:3 FTCA))	--	--	--	--	--	--	--	--	--
Perfluorobutanesulfonamide (PFBSA)	--	--	--	--	--	--	--	--	--
Perfluoro-4-ethylcyclohexanesulfonate (PFECHS)	--	--	--	--	--	--	--	--	--
Perfluorohexanesulfonamide (PFHxSA)	--	--	--	--	--	--	--	--	--
Total Per-and Polyfluoroalkyl Substances	--	--	70.0	74.0	56.1	14.7	3.2	33.9	17.0

Notes

- 1) Detections in **bold**.
- 2) Concentrations in ng/L.
- 3) < = Not detected at specified reporting limit.
- 4) -- = Not analyzed/No criteria.
- 5) Dup = Duplicate sample.
- 6) EGLE Part 201 Groundwater Generic Cleanup Criteria and Screening Levels, October 12, 2023.
- 7) Concentration above the groundwater surface water interface (GSI) criteria are highlighted in yellow.
- 8) B - Compound also found in associated method blank.
- 9) I - Matrix interference with internal standard.
- 10) J - Estimated value less than reporting limit, but greater than MDL.
- 11) X - Elevated reporting limit due to matrix interference.
- 12) Light gray header is most recent sampling event result.
- 13) QA/QC Samples were either not detected above the reporting limit or below the EGLE Part 201 Groundwater Generic Cleanup Criteria.



TABLE 1
RACER Trust - Coldwater Road Peregrine Facilities
Per-and Polyfluoroalkyl Substances Sampling Results - Storm Water Samples South Portion of Site

Coldwater Road - Storm Water Samples - South Portion of Site

Perfluorinated Compound	Well/Sample ID:	EGLE Part 201 Generic Cleanup Criteria and Screening Levels GSI	MH-10E-W (Storm Sewer)	MH-10E-W (Storm Sewer)	MH-10E-W (Storm Sewer)	MH-10E-W (Storm Sewer)	MH-10E-W-20241014 (Storm Sewer)	MH-10E-W-20250320 (Storm Sewer)
	Sample Date:		3/23/2023	6/27/2023	12/18/2023	6/17/2024	10/14/2024	3/20/2025
		Precipitation Inches	0.15"	0.42"	0.24"	0.45"	0.70"	0.23"
Perfluorobutanoic Acid (PFBA)	--	--	<10	10	<9.8	8.0 J	<10	<10
Perfluoropentanoic Acid (PFPeA)	--	--	1.1 J	3.5 J	<3.9	1.9 J	1.6 J	<4.1
4:2 Fluorotelomer Sulfonic Acid (4:2 FTSA)	--	--	<2.0	<1.9	<2.0	<1.9	<2.1	<2.0
Perfluorohexanoic Acid (PFHxA)	--	--	<2.0	3.5	2.2	2.6	2.1	<2.0
Perfluorobutane Sulfonic Acid (PFBS)	670,000	--	<2.0	7.2	3.7	3.5	2.6	<2.0
Perfluoroheptanoic Acid (PFHpA)	--	--	<2.0	2.5	<3.9	1.5 J	<2.1	<2.0
Perfluoropentane Sulfonic Acid (PFPeS)	--	--	<2.0	<1.9	<2.0	<1.9	<2.1	<2.0
6:2 Fluorotelomer Sulfonic Acid (6:2 FTSA)	--	--	<2.0	<1.9	<2.0	<1.9	<2.1	<2.0
Perfluorooctanoic Acid (PFOA)	170	--	<2.0	6.9	3.4	5.5	<2.1	<2.0
Perfluorohexane Sulfonic Acid (PFHxS)	210	--	<2.0	1.5 J	<2.0	1.1 J	<2.1	<2.0
Perfluorohexane Sulfonic Acid - LN (PFHxS-LN)	--	--	<2.0	1.5 J	<2.0	<1.9	<2.1	<2.0
Perfluorohexane Sulfonic Acid - BR (PFHxS-BR)	--	--	<2.0	<1.9	<2.0	<1.9	<2.1	<2.0
Perfluorononanoic Acid (PFNA)	30	--	<2.0	2.0	<2.0	1.0 J	<2.1	<2.0
8:2 Fluorotelomer Sulfonic Acid (8:2 FTSA)	--	--	<2.0	<1.9	<2.0	<1.9	<2.1	<2.0
Perfluoroheptane Sulfonic Acid (PFHpS)	--	--	<2.0	<1.9	<2.0	<1.9	<2.1	<2.0
Perfluorodecanoic Acid (PFDA)	--	--	<2.0	<1.9	<2.0	<1.9	<2.1	<2.0
N-methyl Perfluorooctanesulfonamidoacetic Acid (N-MeFOSAA)	--	--	<2.0	<1.9	<2.0	<1.9	<2.1	<2.0
N-Ethyl Perfluorooctane Sulfonamidoacetic Acid (EtFOSAA)	--	--	<4.0	<3.8	<3.9	<3.9	<4.1	<4.1
Perfluorooctane Sulfonic Acid (PFOS)	12	--	5.7	58	22	27	11	6.5
Perfluorooctane Sulfonic Acid (PFOS-LN)	--	--	3.9	39	14	17	6.4	3.7
Perfluorooctane Sulfonic Acid (PFOS-BR)	--	--	<2.0	18	7.2	8.4	5.0	2.9
Perfluoroundecanoic Acid (PFUnDA)	--	--	<2.0	<1.9	<2.0	<1.9	<2.1	<2.0
Perfluorononane Sulfonic Acid (PFNS)	--	--	<2.0	<1.9	<2.0	<1.9	<2.1	<2.0
Perfluorododecanoic Acid (PFDoDA)	--	--	<2.0	<1.9	<2.0	<1.9	<2.1	<2.0
Perfluorodecane Sulfonic Acid (PFDS)	--	--	<2.0	<1.9	<2.0	<1.9	<2.1	<2.0
Perfluorotridecanoic Acid (PFTrDA)	--	--	<2.0	<1.9	<2.0	<1.9	<2.1	<2.0
Perfluorooctane Sulfonamide (FOSA)	--	--	<2.0	<1.9	<2.0	<1.9	<2.1	<2.0
Perfluorotetradecanoic Acid (PFTeDA)	--	--	<4.0	<3.8	<3.9	<3.9	<4.1	<4.1
11-chloroicosafuoro-3-oxaundecane-1-sulfonic acid (11Cl-PF30UdS)	--	--	<2.0	<1.9	<2.0	<1.9	<2.1	<2.0
9-chlorohexadecafluoro-3-oxanone1-sulfonic acid (9Cl-PF30NS)	--	--	<2.0	<1.9	<2.0	<1.9	<2.1	<2.0
4,8-dioxa-3H-perfluorononanoic acid (ADONA)	--	--	<2.0	<1.9	<2.0	<1.9	<2.1	<2.0
Hexafluoropropylene oxide dimer (HFPO-DA)	--	--	<2.0	<1.9	<9.8	<9.7	<10	<10
3-Perfluoroheptyl propanoic acid (FHpPA (7:3 FTCA))	--	--	--	<3.8	<9.8	<9.7	<10	<10
3-Perfluoropentyl propanoic acid (FPePA (5:3 FTCA))	--	--	--	<3.8	<9.8	<9.7	<10	<10
3-Perfluoropropyl propanoic acid (FPrPA (3:3 FTCA))	--	--	--	<3.8	<9.8	<9.7	<10	<10
Perfluorobutanesulfonamide (PFBSA)	--	--	--	<1.9	0.82	<1.9	<2.1	<2.0
Perfluoro-4-ethylcyclohexanesulfonate (PFECHS)	--	--	--	9.5	2.6	2.9	2.3	1.0 J
Perfluorohexanesulfonamide (PFHxSA)	--	--	--	<1.9	<2.0	<1.9	<2.1	<2.0
Total Per-and Polyfluoroalkyl Substances	--	--	6.8	104.6	34.7	55.0	19.6	7.5

Notes

- 1) Detections in **bold**.
- 2) Concentrations in ng/L.
- 3) < = Not detected at specified reporting limit.
- 4) -- = Not analyzed/No criteria.
- 5) Dup = Duplicate sample.
- 6) EGLE Part 201 Groundwater Generic Cleanup Criteria and Screening Levels, October 12, 2023.
- 7) Concentration above the groundwater surface water interface (GSI) criteria are highlighted in yellow.
- 8) B - Compound also found in associated method blank.
- 9) I - Matrix interference with internal standard.
- 10) J - Estimated value less than reporting limit, but greater than MDL.
- 11) X - Elevated reporting limit due to matrix interference.
- 12) Light gray header is most recent sampling event result.
- 13) QA/QC Samples were either not detected above the reporting limit or below the EGLE Part 201 Groundwater Generic Cleanup Criteria.



TABLE 2
RACER Trust - Coldwater Road Peregrine Facilities
Per-and Polyfluoroalkyl Substances Sampling Results
Storm Water Samples - West of Site

Coldwater Rd - Storm Water Samples West of Site

Perfluorinated Compound	Well/Sample ID:	EGLE Part 201 Generic Cleanup Criteria and Screening Levels GSI	SS-06	SS-06	SS-06	SS-DUP-	SS-06	SS-10	SS-10	SS-10
			(Storm Sewer)	(Storm Sewer)	(Storm Sewer)	031121 (SS-06) Storm Sewer	(Storm Sewer)			
Sample Date:			8/28/2020	12/18/2020	3/11/2021	3/11/2021	6/29/2021	9/7/2022	1/4/2023	3/23/2023
	Precipitation Inches		1.58"	0.01"	0.07"	0.07"	0.40"	0.0"	0.15"	0.15"
Perfluorobutanoic Acid (PFBA)	--	--	<10	<9.9	<10	<11	<11	11	<9.7	<9.5
Perfluoropentanoic Acid (PFPeA)	--	--	<4.1	20	1.4 J	1.9 J	3.1 J	7.9	<3.9	1.7 J
4:2 Fluorotelomer Sulfonic Acid (4:2 FTSA)	--	--	<2.0	<2.0	<2.1	<2.1	<2.1	<2.1	<1.9	<1.9
Perfluorohexanoic Acid (PFHxA)	--	--	1.8 J	<2.0	<2.1	1.5 J	3.2	7.2	<1.9	1.4 J
Perfluorobutane Sulfonic Acid (PFBS)	670,000	2.1	1.6 J	3.3	3.4	4.8	23	<1.9	2.4	
Perfluoroheptanoic Acid (PFHpA)	--	--	<2.0	<2.0	<2.1	<2.1	<2.1	5.1	<1.9	<1.9
Perfluoropentane Sulfonic Acid (PFPeS)	--	--	<2.0	<2.0	3.2	2.2	<2.1	<2.1	<1.9	<1.9
6:2 Fluorotelomer Sulfonic Acid (6:2 FTSA)	--	--	<2.0	<2.0	<2.1	<2.1	<4.2	<2.1	<1.9	<1.9
Perfluorooctanoic Acid (PFOA)	170	2.6	<2.0	<2.1	<2.1	<2.1	2.0 J	9.7	<1.9	<1.9
Perfluorohexane Sulfonic Acid (PFHxS)	210	3.4	<2.0	9.3	9.4	2.9	4.2	<1.9	1.5 J	
Perfluorohexane Sulfonic Acid - LN (PFHxS-LN)	--	--	2.4	<2.0	7.3	7.3	2.1 J	3.0	<1.9	<1.9
Perfluorohexane Sulfonic Acid - BR (PFHxS-BR)	--	--	<2.0	<2.0	<2.1	<2.1	<2.1	<2.1	<1.9	<1.9
Perfluorononanoic Acid (PFNA)	30	<2.0	<2.0	<2.1	<2.1	<2.1	<2.1	<2.1	<1.9	<1.9
8:2 Fluorotelomer Sulfonic Acid (8:2 FTSA)	--	--	<2.0	<2.0	<2.1	<2.1	<2.1	<2.1	<1.9	<1.9
Perfluoroheptane Sulfonic Acid (PFHpS)	--	--	<2.0	<2.0	2.2	<2.1	<2.1	<2.1	<1.9	<1.9
Perfluorodecanoic Acid (PFDA)	--	--	<2.0	<2.0	<2.1	<2.1	<2.1	<2.1	<1.9	<1.9
N-methyl Perfluorooctanesulfonamidoacetic Acid (N-MeFOSAA)	--	--	<2.0	<2.0	<2.1	<2.1	<2.1	<2.1	<1.9	<1.9
N-Ethyl Perfluorooctane Sulfonamidoacetic Acid (EtFOSAA)	--	--	<4.1	<3.9	<4.1	<4.2	<4.2	<4.1	<3.9	<3.9
Perfluorooctane Sulfonic Acid (PFOS)	12	85	3.6	180	160	14	17	<1.9	12	
Perfluorooctane Sulfonic Acid (PFOS-LN)	--	--	49	<2.0	88	81	5.7	3.8	<1.9	4.8
Perfluorooctane Sulfonic Acid (PFOS-BR)	--	--	37	<2.0	86	76	8.5	13	<1.9	6.8
Perfluoroundecanoic Acid (PFUnDA)	--	--	<2.0	<2.0	<2.1	<2.1	<2.1	<2.1	<1.9	<1.9
Perfluorononane Sulfonic Acid (PFNS)	--	--	<2.0	<2.0	<2.1	<2.1	<2.1	<2.1	<1.9	<1.9
Perfluorododecanoic Acid (PFDoDA)	--	--	<2.0	<2.0	<2.1	<2.1	<2.1	<2.1	<1.9	<1.9
Perfluorodecane Sulfonic Acid (PFDS)	--	--	<2.0	<2.0	<2.1	<2.1	<2.1	<2.1	<1.9	<1.9
Perfluorotridecanoic Acid (PFTrDA)	--	--	<2.0	<2.0	<2.1	<2.1	<2.1	<2.1	<1.9	<1.9
Perfluorooctane Sulfonamide (FOSA)	--	--	<2.0	<2.0	<2.1	<2.1	<2.1	<2.1	<1.9	<1.9
Perfluorotetradecanoic Acid (PFTeDA)	--	--	<4.1	<3.9	<4.1	<4.2	<4.2	<4.1	<3.9	<3.8
11-chloroeicosafuoro-3-oxaundecane-1-sulfonic acid (11Cl-PF30Uds)	--	--	<2.0	<2.0	<2.1	<2.1	<2.1	<2.1	<1.9	<1.9
9-chlorohexadecafluoro-3-oxanone1-sulfonic acid (9Cl-PF30NS)	--	--	<2.0	<2.0	<2.1	<2.1	<2.1	<2.1	<1.9	<1.9
4,8-dioxa-3H-perfluorononanoic acid (ADONA)	--	--	<2.0	<2.0	<2.1	<2.1	<2.1	<2.1	<1.9	<1.9
Hexafluoropropylene oxide dimer (HFPO-DA)	--	--	<2.0	<2.0	<2.1	<2.1	<11	<10	<9.7	<1.9
3-Perfluoroheptyl propanoic acid (FHpPA (7:3 FTCA))	--	--	--	--	--	--	--	--	--	--
3-Perfluoropentyl propanoic acid (FPePA (5:3 FTCA))	--	--	--	--	--	--	--	--	--	--
3-Perfluoropropyl propanoic acid (FPrPA (3:3 FTCA))	--	--	--	--	--	--	--	--	--	--
Perfluorobutanesulfonamide (PFBSA)	--	--	--	--	--	--	--	--	--	--
Perfluoro-4-ethylcyclohexanesulfonate (PFECHS)	--	--	--	--	--	--	--	--	--	--
Perfluorohexanesulfonamide (PFHxSA)	--	--	--	--	--	--	--	--	--	--
Total Per-and Polyfluoroalkyl Substances	--	--	94.9	25.2	199.4	178.4	30.0	85.1	0.0	19.0

Notes

- 1) Detections in **bold**.
- 2) Concentrations in ng/L.
- 3) < = Not detected at specified reporting limit.
- 4) -- = Not analyzed/No criteria.
- 5) Dup = Duplicate sample.
- 6) EGLE Part 201 Groundwater Generic Cleanup Criteria and Screening Levels, October 12, 2023.
- 7) Concentration above the groundwater surface water interface (GSI) criteria are highlighted in yellow.
- 8) The detection of PFBA in Field Blank-062520 was caused from the centrifuge tubes leaching out PFBA during the extraction process. The 5X Rule was applied to PFBA detections. If the sample value(s) is less than 5 times the blank concentration (5X Rule), then positive results are qualified "U,"undetected.
- 9) B - Compound also found in associated method blank.
- 10) I - Matrix interference with internal standard.
- 11) J - Estimated value less than reporting limit, but greater than MDL.
- 12) X - Elevated reporting limit due to matrix interference.
- 13) Light gray header is most recent sampling event result.
- 14) QA/QC Samples were either not detected above the reporting limit or below the EGLE Part 201 Groundwater Generic Cleanup Criteria.



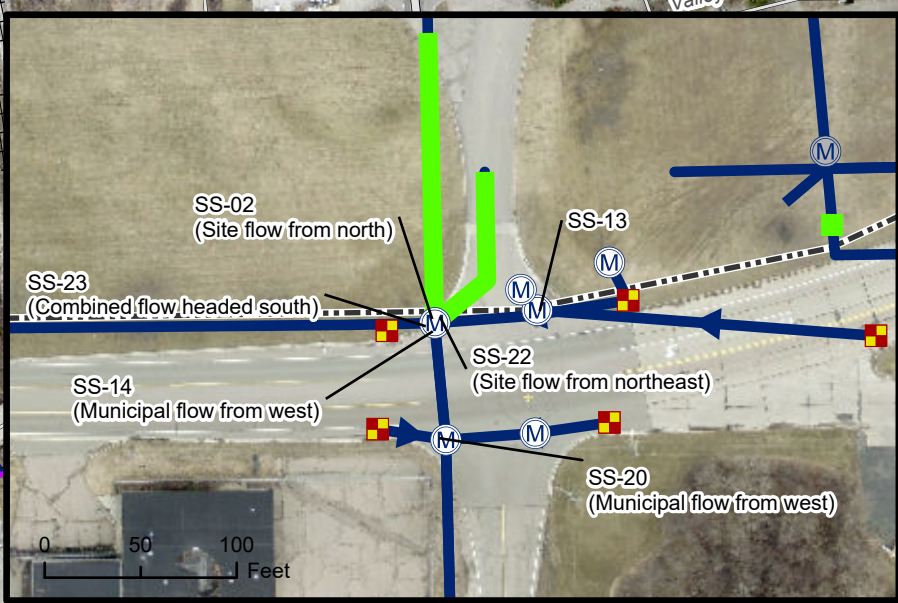
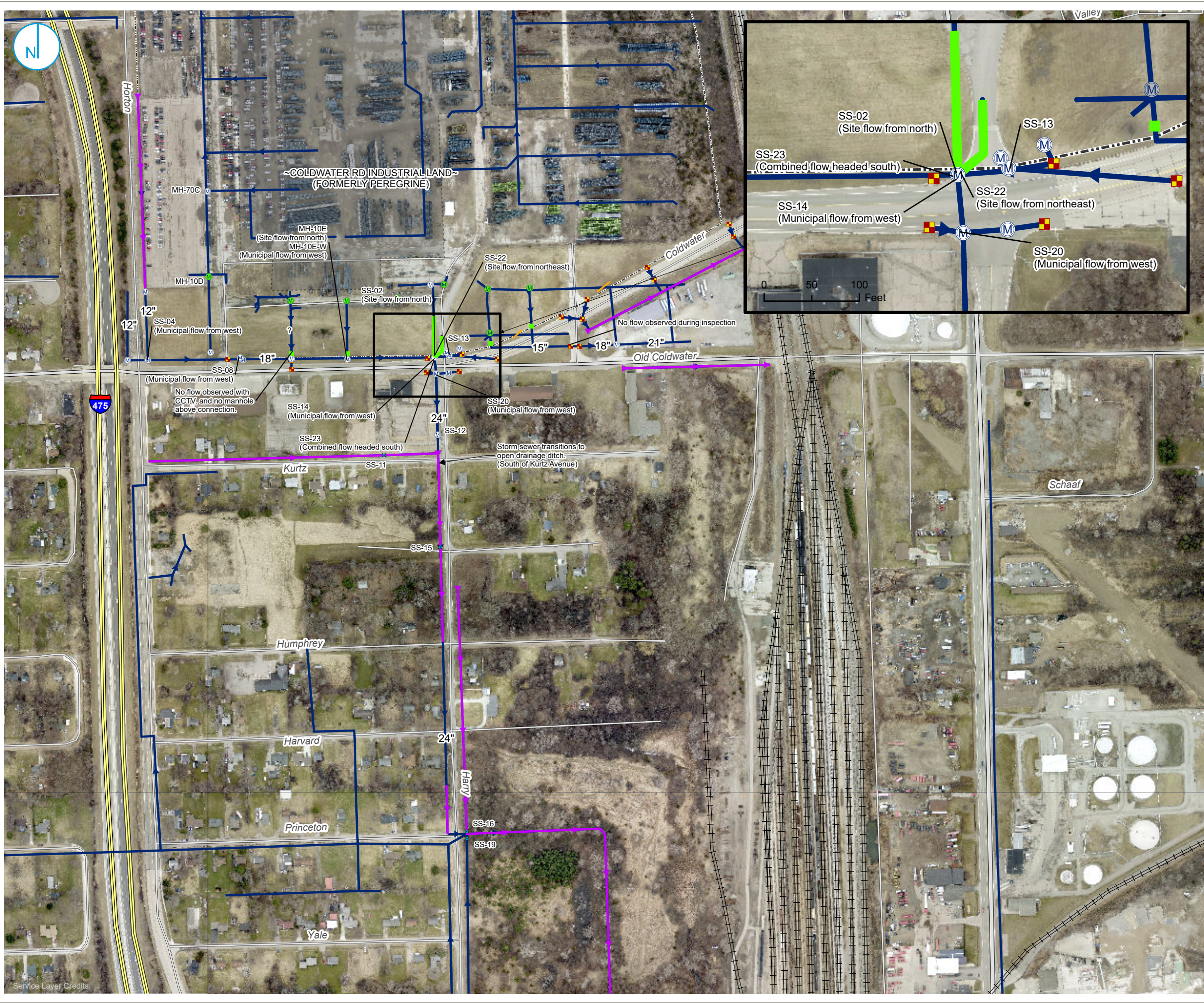
TABLE 2
RACER Trust - Coldwater Road Peregrine Facilities
Per-and Polyfluoroalkyl Substances Sampling Results
Storm Water Samples - West of Site

Coldwater Rd - Storm Water Samples West of Site

Perfluorinated Compound	Well/Sample ID:	EGLE Part 201 Generic Cleanup Criteria and Screening Levels GSI	SS-10	SS-10	SS-10	SS-10- 20241014	SS-10- 20250320	MH-18 (Storm Sewer)	MH-18 (Storm Sewer)	MH-18 (Storm Sewer)	MH-18 (Storm Sewer)	MH-18 (Storm Sewer)
Sample Date:			6/27/2023	12/18/2023	6/17/2024	10/14/2024	3/20/2025	11/5/2019	8/3/2020	12/18/2020	3/11/2021	6/29/2021
Precipitation Inches			0.42"	0.24"	0.45"	0.70"	0.23"	0.07"	1.02"	0.01"	0.07"	0.40"
Perfluorobutanoic Acid (PFBA)	--	--	<14 X	<10	<10	<10	<9.5	<20	<10	<10	<9.9	15
Perfluoropentanoic Acid (PFPeA)	--	--	<6.4 X	2.0 J	<4.1	<4.1	<5.9 X	<10	<4.0	<4.1	<3.9	2.4 J
4:2 Fluorotelomer Sulfonic Acid (4:2 FTSA)	--	--	<1.9	<2.0	<2.0	<2.1	<1.9	<10	<2.0	<2.0	<2.0	<2.0
Perfluorohexanoic Acid (PFHxA)	--	--	3.5	2.0	2.2	<2.1	<1.9	<10	<2.0	<2.0	1.9 J	2.7
Perfluorobutane Sulfonic Acid (PFBS)	670,000	--	3.5	2.4	3.7	4.5	2.1	<10	<2.0	4.8	6.8	6.3
Perfluoroheptanoic Acid (PFHpA)	--	--	1.9 J	<4.1	<2.0	<2.1	<1.9	<10	<2.0	<2.0	<2.0	<2.0
Perfluoropentane Sulfonic Acid (PFPeS)	--	--	<1.9	<2.0	<2.0	<2.1	<1.9	<10	2.2	8.1	14	13
6:2 Fluorotelomer Sulfonic Acid (6:2 FTSA)	--	--	<1.9	<2.0	<2.0	<2.1	<1.9	<10	<2.0	<2.0	<2.0	<3.9
Perfluorooctanoic Acid (PFOA)	170	--	2.2	0.99 J	2.1	1.7 J	<1.9	<10	<2.0	1.8 J	<2.0	3.7
Perfluorohexane Sulfonic Acid (PFHxS)	210	--	<1.9	1.1 J	1.6 J	<2.1	<1.9	15	8.6	33	40	30
Perfluorohexane Sulfonic Acid - LN (PFHxS-LN)	--	--	<1.9	1.1 J	<2.0	<2.1	<1.9	12	7.4	28	31	24
Perfluorohexane Sulfonic Acid - BR (PFHxS-BR)	--	--	<1.9	<2.0	<2.0	<2.1	<1.9	<10	<2.0	4.3	7.9	5.3
Perfluorononanoic Acid (PFNA)	30	--	<1.9	<2.0	<2.0	<2.1	<1.9	<10	<2.0	<2.0	<2.0	<2.0
8:2 Fluorotelomer Sulfonic Acid (8:2 FTSA)	--	--	<1.9	<2.0	<2.0	<2.1	<1.9	<10	<2.0	<2.0	<2.0	<2.0
Perfluoroheptane Sulfonic Acid (PFHpS)	--	--	<1.9	<2.0	<2.0	<2.1	<1.9	<10	2.5	9.8	5.5	4.8
Perfluorodecanoic Acid (PFDA)	--	--	<1.9	<2.0	<2.0	<2.1	<1.9	<10	<2.0	<2.0	<2.0	<2.0
N-methyl Perfluorooctanesulfonamidoacetic Acid (N-MeFOSAA)	--	--	<1.9	<2.0	<2.0	<2.1	<1.9	<10	<2.0	<2.0	<2.0	<2.0
N-Ethyl Perfluorooctane Sulfonamidoacetic Acid (EtFOSAA)	--	--	<3.9	<4.1	<4.1	<4.1	<3.8	<10	<4.0	<4.1	<3.9	<3.9
Perfluorooctane Sulfonic Acid (PFOS)	12	--	11	11	14	9.2	4.6	210	240	460	280	310
Perfluorooctane Sulfonic Acid (PFOS-LN)	--	--	3.9	2.8	4.0	4.0	1.4 J	110	150	230	130	180
Perfluorooctane Sulfonic Acid (PFOS-BR)	--	--	6.8	7.7	9.0	5.8	2.9	91	88	230	140	130
Perfluoroundecanoic Acid (PFUnDA)	--	--	<1.9	<2.0	<2.0	<2.1	<1.9	<10	<2.0	<2.0	<2.0	<2.0
Perfluorononane Sulfonic Acid (PFNS)	--	--	<1.9	<2.0	<2.0	<2.1	<1.9	<10	<2.0	<2.0	<2.0	<2.0
Perfluorododecanoic Acid (PFDoDA)	--	--	<1.9	<2.0	<2.0	<2.1	<1.9	<10	<2.0	<2.0	<2.0	<2.0
Perfluorodecane Sulfonic Acid (PFDS)	--	--	<1.9	<2.0	<2.0	<2.1	<1.9	<10	<2.0	<2.0	<2.0	<2.0
Perfluorotridecanoic Acid (PFTrDA)	--	--	<1.9	<2.0	<2.0	<2.1	<1.9	<10	<2.0	<2.0	<2.0	<2.0
Perfluorooctane Sulfonamide (FOSA)	--	--	<1.9	<2.0	<2.0	<2.1	<1.9	<10	<2.0	<2.0	<2.0	<2.0
Perfluorotetradecanoic Acid (PFTeDA)	--	--	<3.9	<4.1	<4.1	<4.1	<3.8	<10	<4.0	<4.1	<3.9	<3.9
11-chlorooicosafluoro-3-oxaundecane-1-sulfonic acid (11Cl-PF3OUdS)	--	--	<1.9	<2.0	<2.0	<2.1	<1.9	<10	<2.0	<2.0	<2.0	<2.0
9-chlorohexadecafluoro-3-oxanone1-sulfonic acid (9Cl-PF3ONS)	--	--	<1.9	<2.0	<2.0	<2.1	<1.9	<10	<2.0	<2.0	<2.0	<2.0
4,8-dioxa-3H-perfluorononanoic acid (ADONA)	--	--	<1.9	<2.0	<2.0	<2.1	<1.9	<10	<2.0	<2.0	<2.0	<2.0
Hexafluoropropylene oxide dimer (HFPO-DA)	--	--	<1.9	<10	<10	<10	<9.5	<10	<2.0	<2.0	<2.0	<9.9
3-Perfluorohexyl propanoic acid (FHpPA (7:3 FTCA))	--	--	<3.9	<10	<10	<10	<9.5	--	--	--	--	--
3-Perfluoropentyl propanoic acid (FPePA (5:3 FTCA))	--	--	<3.9	<10	<10	<10	<9.5	--	--	--	--	--
3-Perfluoropropyl propanoic acid (FPrPA (3:3 FTCA))	--	--	<3.9	<10	<10	<10	<9.5	--	--	--	--	--
Perfluorobutanesulfonamide (PFBSA)	--	--	2.7	1.0 J	1.6 J	2.5	1.3 J	--	--	--	--	--
Perfluoro-4-ethylcyclohexanesulfonate (PFECHS)	--	--	9.7	19	13	6.9	8.6	--	--	--	--	--
Perfluorohexanesulfonamide (PFHxSA)	--	--	<1.9	<2.0	<2.0	<2.1	<1.9	--	--	--	--	--
Total Per-and Polyfluoroalkyl Substances	--	--	34.5	39.5	38.2	24.8	16.6	225.0	253.3	517.5	348.2	387.9

- Notes
- 1) Detections in **bold**.
 - 2) Concentrations in ng/L.
 - 3) < = Not detected at specified reporting limit.
 - 4) -- = Not analyzed/No criteria.
 - 5) Dup = Duplicate sample.
 - 6) EGLE Part 201 Groundwater Generic Cleanup Criteria and Screening Levels, October 12, 2023.
 - 7) Concentration above the groundwater surface water interface (GSI) criteria are highlighted in yellow.
 - 8) The detection of PFBA in Field Blank-062520 was caused from the centrifuge tubes leaching out PFBA during the extraction process. The 5X Rule was applied to PFBA detections. If the sample value(s) is less than 5 times the blank concentration (5X Rule), then positive results are qualified "U,"undetected.
 - 9) B - Compound also found in associated method blank.
 - 10) I - Matrix interference with internal standard.
 - 11) J - Estimated value less than reporting limit, but greater than MDL.
 - 12) X - Elevated reporting limit due to matrix interference.
 - 13) Light gray header is most recent sampling event result.
 - 14) QA/QC Samples were either not detected above the reporting limit or below the EGLE Part 201 Groundwater Generic Cleanup Criteria.

FIGURES



- M ABANDONED MANHOLE
- STORM SEWER DRAIN
- M STORM SEWER MANHOLE
- █ PIPE PLUG
- ✕ SURFACE WATER
- ↔ OPEN DRAINAGE DITCH
- ▶ STORM SEWER
- TEST PIT
- FORMER BUILDING
- PROPERTY BOUNDARY

0 175 350
Feet

**GENESEE STORM SEWERS
(HORTON ST TO N DORT HWY)**

RACER TRUST
COLDWATER ROAD
FLINT, MICHIGAN

FIGURE 01

RAMBOLL AMERICAS
ENGINEERING SOLUTIONS, INC.
A RAMBOLL COMPANY



Service Layer Credits:



KLEIN STREET AREA STORM SEWER CONFIGURATION

RACER TRUST
 COLDWATER ROAD
 FLINT, MICHIGAN

FIGURE 02

RAMBOLL AMERICAS
 ENGINEERING SOLUTIONS, INC.
 A RAMBOLL COMPANY



**APPENDIX A
STORM WATER MONITORING
MATRIX AND FIGURE**

TABLE 1
RACER Trust - Coldwater Road
Per- and Polyfluoroalkyl Substances Stormwater Monitoring Matrix

STORM WATER MONITORING LOCATIONS SAMPLE ID / DESCRIPTION	VISUAL FLOW OBSERVATION (YES/NO)	FLOW RATE ESTIMATE (GPM)	SAMPLE COLLECTED FOR PFAS ANALYSIS (YES/NO)	OTHER OBSERVATIONS
SITE & POND AREA	DATE:	Thursday, March 20, 2025		
Middle Pond to Western Pond Spillway - Discharge to Western Pond (Sample ID: SW-13)	No flow	--	--	
Western Pond Berm (Sample ID: SW-15)	No flow	--	--	
Area West of Western Pond Berm - Check for Poned Water in Area	Yes	--	--	
MH-18C - Receives discharge, if any, from Western pond	No flow	--	--	little water in manhole, no flow
MH-18B - Receives water from MH-18C	No flow	--	--	little water in manhole, no flow
MH-18A - Receives water from MH-18B	No flow	--	--	little water in manhole, no flow
MH-18 - Receives water from MH-18A, discharge monitoring point (Sample ID: MH-18)	No flow	--	--	
MH-10 - East of Entrance Gate Along Drive (near OBG MW-4) - Check Water Level	13" below rim	--	--	
RAILROAD SPURS EAST OF PONDS				
Eastern RR Spur - Flow from South to North from Peregrine Property (Sample ID: SS-NP)	Yes	--	--	
Western RR Spur - Flow from South to North from West of Landfill (Sample ID: SS-NL)	Yes	--	--	
DRAINAGE DITCHES WEST OF RMA				
Eastern Ditch - Flow from South (Sample ID: SS-17)	No flow	--	--	
Western Ditch - Flow from South (Sample ID: SS-18)	No flow	--	--	
INDIVIDUAL STORM WATER MANHOLES - Klein Street				
Corner of George St and E Klein St - 72-Inch Line from East - Downstream of MH-16 plug (Sample ID: MH-17A)	No flow from plug	--	--	
Corner of George St and E Klein St - Flow from the South From Neighborhood	Yes	approx. 4-5 gpm	--	
INDIVIDUAL STORM WATER MANHOLES - Saginaw Road				
Northeast Corner of Saginaw Rd and E Klein St - Flow from the South (Sample ID: SS-05)	Yes	--	--	
Northeast Corner of Saginaw Rd and E Klein St - Flow from the East	Yes	--	--	
Northeast Corner of Saginaw Rd and E Klein St - Combined flow toward West Sample ID: SS-07)	Yes	--	--	
North of E Klein St on Eastside of Saginaw Rd - Municipal Flow from North (Sample ID: SS-10)	Yes	approx. 4-5 gpm	YES	
North of E Klein St on Eastside of Saginaw Rd (west of OBG MW-26) - Flow Coming from Site	No flow	--	--	
INDIVIDUAL STORM WATER MANHOLES - Coldwater Road				
Corner of Coldwater Rd and Horton Ave - Municipal Flow from West (Sample ID: SS-04)	Yes	approx. 0.25-0.5 gpm	--	
Coldwater Rd Approx. 170 ft West of MH-10E - Municipal Flow from West (Sample ID: SS-08)	Yes	--	--	
Coldwater Rd Approx. 300 ft West of SS-02 - Municipal Flow from West (Sample ID: MH-10E-W)	Yes	--	YES	
Coldwater Rd Approx. 300 ft West of SS-02 - Check Plugged Pipe - Flow from RACER Site (Sample ID: MH-10E)	No flow from plug	--	--	
Coldwater Rd for Peregrine Site - Municipal Flow from West (Sample ID: SS-14)	Yes	approx. 11 gpm	YES	
Coldwater Rd for Peregrine Site - Check Plugged Pipe - Flow from RACER Site (Sample ID: SS-02)	No flow from plug	--	--	

Precipitation Past 24 hours: 0.23"

Note: -- No sample/information was collected.

**APPENDIX B
LABORATORY ANALYTICAL REPORTS**



Analytical Laboratory Report

Report ID: S72614.01(01)
Generated on 04/08/2025

Report to

Attention: Clifford Yantz
Ramboll Americas
2090 Commonwealth Blvd
Ann Arbor, MI 48105

Phone: 313-333-0211 FAX:
Email: Clifford.Yantz@ramboll.com

Report produced by

Merit Laboratories, Inc.
2680 East Lansing Drive
East Lansing, MI 48823

Phone: (517) 332-0167 FAX: (517) 332-6333

Contacts for report questions:
John Lavery (johnlavery@meritlabs.com)
Barbara Ball (bball@meritlabs.com)

Additional Contacts: Kevin Schneider, Nicole Pitkorchemny

Report Summary

Lab Sample ID(s): S72614.01-S72614.07
Project: RACER Coldwater Rd
Collected Date(s): 03/20/2025
Submitted Date/Time: 03/20/2025 15:40
Sampled by: Kevin Schneider
P.O. #: 1940011180 TASK 37

Table of Contents

- Cover Page (Page 1)
- General Report Notes (Page 2)
- Report Narrative (Page 2)
- Laboratory Accreditations (Page 3)
- Qualifier Descriptions (Page 3)
- Glossary of Abbreviations (Page 3)
- Method Summary (Page 4)
- Parameter Summary (Page 5)
- Sample Summary (Page 6)

Maya Murshak
Technical Director



Analytical Laboratory Report

General Report Notes

Analytical results relate only to the samples tested, in the condition received by the laboratory.

Methods may be modified for improved performance.

Results reported on a dry weight basis where applicable.

'Not detected' indicates that parameter was not found at a level equal to or greater than the reporting limit (RL).

When MDL results are provided, then 'Not detected' indicates that parameter was not found at a level equal to or greater than the MDL.

40 CFR Part 136 Table II Required Containers, Preservation Techniques and Holding Times for the Clean Water Act specify that samples for acrolein and acrylonitrile, and 2-chloroethylvinyl ether need to be preserved at a pH in the range of 4 to 5 or if not preserved, analyzed within 3 days of sampling.

QA/QC corresponding to this analytical report is a separate document with the same Merit ID reference and is available upon request.

Starred (*) analytes are not NY NELAP accredited.

Samples are held by the lab for 30 days from the final report date unless a written request to hold longer is provided by the client.

Report shall not be reproduced except in full, without the written approval of Merit Laboratories, Inc.

Limits for drinking water samples, are listed as the MCL Limits (Maximum Contaminant Level Concentrations)

PFAS requirement: Section 9.3.8 of U.S. EPA Method 537.1 states "If the method analyte(s) found in the Field Sample is present in the

FRB at a concentration greater than 1/3 the MRL, then all samples collected with that FRB are invalid and must be recollected and reanalyzed."

Samples submitted without an accompanying FRB may not be acceptable for compliance purposes.

Wisconsin PFAs analysis: MDL = LOD; RL = LOQ. LOD and LOQ are adjusted for dilution.

All accreditations/certifications held by this laboratory are listed on page 3. Not all accreditations/certifications are applicable to this report.

For a specific list of accredited analytes, please feel free to contact the laboratory or visit <https://www.meritlabs.com/certifications>.

Report Narrative

There is no additional narrative for this analytical report



Analytical Laboratory Report

Laboratory Accreditations (For Reference Only)

Authority	Accreditation ID
Michigan DEQ	#9956
DOD ELAP & ISO/IEC 17025:2017	#69699 PJLA Testing
WBENC	#2005110032
Ohio VAP	#CL0002
Indiana DOH	#C-MI-07
New York NELAC	#11814
North Carolina DENR	#680
North Carolina DOH	#26702
Pennsylvania DEP	#68-05884
Wisconsin DNR	FID# 399147320

Qualifier Descriptions

Qualifier	Description
!	Result is outside of stated limit criteria
B	Compound also found in associated method blank
E	Concentration exceeds calibration range
F	Analysis run outside of holding time
G	Estimated result due to extraction run outside of holding time
H	Sample submitted and run outside of holding time
I	Matrix interference with internal standard
J	Estimated value less than reporting limit, but greater than MDL
L	Elevated reporting limit due to low sample amount
M	Result reported to MDL not RDL
O	Analysis performed by outside laboratory. See attached report.
R	Preliminary result
S	Surrogate recovery outside of control limits
T	No correction for total solids
X	Elevated reporting limit due to matrix interference
Y	Elevated reporting limit due to high target concentration
b	Value detected less than reporting limit, but greater than MDL
e	Reported value estimated due to interference
j	Analyte also found in associated method blank
o	Associated EIS outside of control limits
p	Benzo(b)Fluoranthene and Benzo(k)Fluoranthene integrated as one peak.
q	Qualifier ion ratio outside of control limits
x	Preserved from bulk sample

Glossary of Abbreviations

Abbreviation	Description
RL/RDL	Reporting Limit
MDL	Method Detection Limit
MS	Matrix Spike
MSD	Matrix Spike Duplicate
SW	EPA SW 846 (Soil and Wastewater) Methods
E	EPA Methods
SM	Standard Methods
LN	Linear
BR	Branched



Analytical Laboratory Report

Method Summary

Method	Version
ASTMD7979-19M	ASTM Method D7979 - 19 Modified (Isotopic Dilution)



Analytical Laboratory Report

Parameter Summary

Parameter	Synonym	Cas #
PFBA	Perfluorobutanoic Acid	375-22-4
PFPeA	Perfluoropentanoic Acid	2706-90-3
4:2 FTSA	4:2 Fluorotelomer Sulfonic Acid	757124-72-4
PFHxA	Perfluorohexanoic Acid	307-24-4
PFBS	Perfluorobutane sulfonic Acid	375-73-5
PFHpA	Perfluoroheptanoic Acid	375-85-9
PFPeS	Perfluoropentane Sulfonic Acid	2706-91-4
6:2 FTSA	6:2 Fluorotelomer Sulfonic Acid	27619-97-2
PFOA	Perfluorooctanoic Acid	335-67-1
PFHxS	Perfluorohexane Sulfonic Acid	355-46-4
PFHxS-LN	Perfluorohexane Sulfonic Acid - LN	355-46-4-LN
PFHxS-BR	Perfluorohexane Sulfonic Acid - BR	355-46-4-BR
PFNA	Perfluorononanoic Acid	375-95-1
8:2 FTSA	8:2 Fluorotelomer Sulfonic Acid	39108-34-4
PFHpS	Perfluoroheptane Sulfonic Acid	375-92-8
PFDA	Perfluorodecanoic Acid	335-76-2
N-MeFOSAA	N-methyl perfluorooctanesulfonamidoacetic acid	2355-31-9
EtFOSAA	N-Ethyl Perfluorooctane Sulfonamidoacetic Acid	2991-50-6
PFOS	Perfluorooctane Sulfonic Acid	1763-23-1
PFOS-LN	Perfluorooctane Sulfonic Acid - LN	1763-23-1-LN
PFOS-BR	Perfluorooctane Sulfonic Acid - BR	1763-23-1-BR
PFUnDA	Perfluoroundecanoic Acid	2058-94-8
PFNS	Perfluorononane Sulfonic Acid	68259-12-1
PFDoDA	Perfluorododecanoic Acid	307-55-1
PFDS	Perfluorodecane Sulfonic Acid	335-77-3
PFTTrDA	Perfluorotridecanoic Acid	72629-94-8
FOSA	Perfluorooctane Sulfonamide	754-91-6
PFTeDA	Perfluorotetradecanoic Acid	376-06-7
11Cl-PF3OUdS	11-chloroeicosafuoro-3-oxaundecane-1-sulfonic acid	763051-92-9
9Cl-PF3ONS	9-chlorohexadecafluoro-3-oxanone1-sulfonic acid	756426-58-1
ADONA	4,8-dioxa-3H-perfluorononanoic acid	919005-14-4
HFPO-DA	Hexafluoropropylene oxide dimer	13252-13-6
FHpPA (7:3 FTCA)	3-Perfluoroheptyl propanoic acid	812-70-4
FPePA (5:3 FTCA)	3-Perfluoropentyl propanoic acid	914637-49-3
FPrPA (3:3 FTCA)	3-Perfluoropropyl propanoic acid	356-02-5
PFBSA	Perfluorobutanesulfonamide	30334-69-1
PFECHS	Perfluoro-4-ethylcyclohexanesulfonate	67584-42-3
PFHxSA	Perfluorohexanesulfonamide	41997-13-1



Analytical Laboratory Report

Sample Summary (7 samples)

Sample ID	Sample Tag	Matrix	Collected Date/Time
S72614.01	SS-10-20250320	Liquid	03/20/25 12:15
S72614.02	SS-12-20250320	Liquid	03/20/25 11:10
S72614.03	SS-14-20250320	Liquid	03/20/25 11:36
S72614.04	SS-15-20250320	Liquid	03/20/25 10:54
S72614.05	SS-16-20250320	Liquid	03/20/25 10:44
S72614.06	MH-10E-W-20250320	Liquid	03/20/25 12:00
S72614.07	SS-23-20250320	Liquid	03/20/25 11:42



Analytical Laboratory Report

Lab Sample ID: S72614.01

Sample Tag: SS-10-20250320

Collected Date/Time: 03/20/2025 12:15

Matrix: Liquid

COC Reference: 69303

Sample Containers

#	Type	Preservative(s)	Refrigerated?	Arrival Temp. (C)	Thermometer #
1	15mL Centrifuge Tube	None	Yes	4.9	IR

Extraction / Prep.

Parameter	Result	Method	Run Date	Analyst	Flags
Initial wt. (g) / Final wt. (g) / Volume (ml)*	11.74/6.48/10	ASTMD7979-19M	03/21/25 11:30	CED	

Organics

34 PFAs, Method: ASTMD7979-19M, Run Date: 03/21/25 14:38, Analyst: CED

Parameter	Result	RL	MDL	Units	Dilution	CAS#	Flags
PFBA*	Not detected	9.5	1.5	ng/L	1.9	375-22-4	
PFPeA*	Not detected	5.9	0.76	ng/L	1.9	2706-90-3	X
4:2 FTSA*	Not detected	1.9	0.76	ng/L	1.9	757124-72-4	
PFHxA*	Not detected	1.9	0.38	ng/L	1.9	307-24-4	
PFBS*	2.1	1.9	0.76	ng/L	1.9	375-73-5	
PFHpA*	Not detected	1.9	0.95	ng/L	1.9	375-85-9	
PFPeS*	Not detected	1.9	0.76	ng/L	1.9	2706-91-4	
6:2 FTSA*	Not detected	1.9	1.1	ng/L	1.9	27619-97-2	
PFOA*	Not detected	1.9	1.5	ng/L	1.9	335-67-1	
PFHxS*	Not detected	1.9	1.1	ng/L	1.9	355-46-4	
PFHxS-LN*	Not detected	1.9	1.1	ng/L	1.9	355-46-4-LN	
PFHxS-BR*	Not detected	1.9	1.1	ng/L	1.9	355-46-4-BR	
PFNA*	Not detected	1.9	0.76	ng/L	1.9	375-95-1	
8:2 FTSA*	Not detected	1.9	0.95	ng/L	1.9	39108-34-4	
PFHpS*	Not detected	1.9	1.1	ng/L	1.9	375-92-8	
PFDA*	Not detected	1.9	0.57	ng/L	1.9	335-76-2	
N-MeFOSAA*	Not detected	1.9	1.3	ng/L	1.9	2355-31-9	
EtFOSAA*	Not detected	3.8	1.9	ng/L	1.9	2991-50-6	
PFOS*	4.6	1.9	1.1	ng/L	1.9	1763-23-1	
PFOS-LN*	1.4	1.9	1.1	ng/L	1.9	1763-23-1-LN	J
PFOS-BR*	2.9	1.9	1.1	ng/L	1.9	1763-23-1-BR	
PFUnDA*	Not detected	1.9	0.95	ng/L	1.9	2058-94-8	
PFNS*	Not detected	1.9	0.95	ng/L	1.9	68259-12-1	
PFDODA*	Not detected	1.9	0.57	ng/L	1.9	307-55-1	
PFDS*	Not detected	1.9	1.1	ng/L	1.9	335-77-3	
PFTTrDA*	Not detected	1.9	0.95	ng/L	1.9	72629-94-8	
FOSA*	Not detected	1.9	0.76	ng/L	1.9	754-91-6	
PFTeDA*	Not detected	3.8	0.38	ng/L	1.9	376-06-7	
11Cl-PF3OUdS*	Not detected	1.9	0.76	ng/L	1.9	763051-92-9	
9Cl-PF3ONS*	Not detected	1.9	0.76	ng/L	1.9	756426-58-1	
ADONA*	Not detected	1.9	0.95	ng/L	1.9	919005-14-4	
HFPO-DA*	Not detected	9.5	1.9	ng/L	1.9	13252-13-6	
FHpPA (7:3 FTCA)*	Not detected	9.5	1.9	ng/L	1.9	812-70-4	
FPePA (5:3 FTCA)*	Not detected	9.5	1.9	ng/L	1.9	914637-49-3	
FPrPA (3:3 FTCA)*	Not detected	9.5	0.95	ng/L	1.9	356-02-5	

X-Elevated reporting limit due to matrix interference

J-Estimated value less than reporting limit, but greater than MDL



Analytical Laboratory Report

Lab Sample ID: S72614.01 (continued)

Sample Tag: SS-10-20250320

34 PFAs, Method: ASTMD7979-19M, Run Date: 03/21/25 14:38, Analyst: CED (continued)

Parameter	Result	RL	MDL	Units	Dilution	CAS#	Flags
PFBSA*	1.3	1.9	1.1	ng/L	1.9	30334-69-1	J
PFECHS*	8.6	1.9	0.95	ng/L	1.9	67584-42-3	
PFHxSA*	Not detected	1.9	0.76	ng/L	1.9	41997-13-1	

J-Estimated value less than reporting limit, but greater than MDL



Analytical Laboratory Report

Lab Sample ID: S72614.02

Sample Tag: SS-12-20250320

Collected Date/Time: 03/20/2025 11:10

Matrix: Liquid

COC Reference: 69303

Sample Containers

#	Type	Preservative(s)	Refrigerated?	Arrival Temp. (C)	Thermometer #
1	15mL Centrifuge Tube	None	Yes	4.9	IR

Extraction / Prep.

Parameter	Result	Method	Run Date	Analyst	Flags
Initial wt. (g) / Final wt. (g) / Volume (ml)*	11.40/6.48/10	ASTMD7979-19M	03/21/25 11:30	CED	

Organics

34 PFAs, Method: ASTMD7979-19M, Run Date: 03/21/25 14:58, Analyst: CED

Parameter	Result	RL	MDL	Units	Dilution	CAS#	Flags
PFBA*	Not detected	10	1.6	ng/L	2.03	375-22-4	
PFPeA*	Not detected	4.1	0.81	ng/L	2.03	2706-90-3	
4:2 FTSA*	Not detected	2.0	0.81	ng/L	2.03	757124-72-4	
PFHxA*	3.2	2.0	0.41	ng/L	2.03	307-24-4	
PFBS*	1.7	2.0	0.81	ng/L	2.03	375-73-5	J
PFHpA*	1.4	2.0	1.0	ng/L	2.03	375-85-9	J
PFPeS*	1.8	2.0	0.81	ng/L	2.03	2706-91-4	J
6:2 FTSA*	Not detected	2.0	1.2	ng/L	2.03	27619-97-2	
PFOA*	3.0	2.0	1.6	ng/L	2.03	335-67-1	
PFHxS*	4.3	2.0	1.2	ng/L	2.03	355-46-4	
PFHxS-LN*	3.4	2.0	1.2	ng/L	2.03	355-46-4-LN	
PFHxS-BR*	Not detected	2.0	1.2	ng/L	2.03	355-46-4-BR	
PFNA*	Not detected	2.0	0.81	ng/L	2.03	375-95-1	
8:2 FTSA*	Not detected	2.0	1.0	ng/L	2.03	39108-34-4	
PFHpS*	1.8	2.0	1.2	ng/L	2.03	375-92-8	J
PFDA*	Not detected	2.0	0.61	ng/L	2.03	335-76-2	
N-MeFOSAA*	Not detected	2.0	1.4	ng/L	2.03	2355-31-9	
EtFOSAA*	Not detected	4.1	2.0	ng/L	2.03	2991-50-6	
PFOS*	210	2.0	1.2	ng/L	2.03	1763-23-1	
PFOS-LN*	150	2.0	1.2	ng/L	2.03	1763-23-1-LN	
PFOS-BR*	51	2.0	1.2	ng/L	2.03	1763-23-1-BR	
PFUnDA*	Not detected	2.0	1.0	ng/L	2.03	2058-94-8	
PFNS*	Not detected	2.0	1.0	ng/L	2.03	68259-12-1	
PFDODA*	Not detected	2.0	0.61	ng/L	2.03	307-55-1	
PFDS*	Not detected	2.0	1.2	ng/L	2.03	335-77-3	
PFTTrDA*	Not detected	2.0	1.0	ng/L	2.03	72629-94-8	
FOSA*	Not detected	2.0	0.81	ng/L	2.03	754-91-6	
PFTeDA*	Not detected	4.1	0.41	ng/L	2.03	376-06-7	
11Cl-PF3OUdS*	Not detected	2.0	0.81	ng/L	2.03	763051-92-9	
9Cl-PF3ONS*	Not detected	2.0	0.81	ng/L	2.03	756426-58-1	
ADONA*	Not detected	2.0	1.0	ng/L	2.03	919005-14-4	
HFPO-DA*	Not detected	10	2.0	ng/L	2.03	13252-13-6	
FHpPA (7:3 FTCA)*	Not detected	10	2.0	ng/L	2.03	812-70-4	
FPePA (5:3 FTCA)*	Not detected	10	2.0	ng/L	2.03	914637-49-3	
FPrPA (3:3 FTCA)*	Not detected	10	1.0	ng/L	2.03	356-02-5	
PFBSA*	Not detected	2.0	1.2	ng/L	2.03	30334-69-1	

J-Estimated value less than reporting limit, but greater than MDL



Analytical Laboratory Report

Lab Sample ID: S72614.02 (continued)

Sample Tag: SS-12-20250320

34 PFAs, Method: ASTMD7979-19M, Run Date: 03/21/25 14:58, Analyst: CED (continued)

Parameter	Result	RL	MDL	Units	Dilution	CAS#	Flags
PFECHS*	120	2.0	1.0	ng/L	2.03	67584-42-3	
PFHxSA*	Not detected	2.0	0.81	ng/L	2.03	41997-13-1	



Analytical Laboratory Report

Lab Sample ID: S72614.03

Sample Tag: SS-14-20250320

Collected Date/Time: 03/20/2025 11:36

Matrix: Liquid

COC Reference: 69303

Sample Containers

#	Type	Preservative(s)	Refrigerated?	Arrival Temp. (C)	Thermometer #
1	15mL Centrifuge Tube	None	Yes	4.9	IR

Extraction / Prep.

Parameter	Result	Method	Run Date	Analyst	Flags
Initial wt. (g) / Final wt. (g) / Volume (ml)*	12.08/6.48/11	ASTMD7979-19M	03/21/25 11:30	CED	

Organics

34 PFAs, Method: ASTMD7979-19M, Run Date: 03/21/25 15:18, Analyst: CED

Parameter	Result	RL	MDL	Units	Dilution	CAS#	Flags
PFBA*	Not detected	9.8	1.6	ng/L	1.96	375-22-4	
PFPeA*	Not detected	3.9	0.78	ng/L	1.96	2706-90-3	
4:2 FTSA*	Not detected	2.0	0.78	ng/L	1.96	757124-72-4	
PFHxA*	Not detected	2.0	0.39	ng/L	1.96	307-24-4	
PFBS*	Not detected	2.0	0.78	ng/L	1.96	375-73-5	
PFHpA*	Not detected	2.0	0.98	ng/L	1.96	375-85-9	
PFPeS*	Not detected	2.0	0.78	ng/L	1.96	2706-91-4	
6:2 FTSA*	Not detected	2.0	1.2	ng/L	1.96	27619-97-2	
PFOA*	Not detected	2.0	1.6	ng/L	1.96	335-67-1	
PFHxS*	Not detected	2.0	1.2	ng/L	1.96	355-46-4	
PFHxS-LN*	Not detected	2.0	1.2	ng/L	1.96	355-46-4-LN	
PFHxS-BR*	Not detected	2.0	1.2	ng/L	1.96	355-46-4-BR	
PFNA*	Not detected	2.0	0.78	ng/L	1.96	375-95-1	
8:2 FTSA*	Not detected	2.0	0.98	ng/L	1.96	39108-34-4	
PFHpS*	Not detected	2.0	1.2	ng/L	1.96	375-92-8	
PFDA*	Not detected	2.0	0.59	ng/L	1.96	335-76-2	
N-MeFOSAA*	Not detected	2.0	1.4	ng/L	1.96	2355-31-9	
EtFOSAA*	Not detected	3.9	2.0	ng/L	1.96	2991-50-6	
PFOS*	12	2.0	1.2	ng/L	1.96	1763-23-1	
PFOS-LN*	8.7	2.0	1.2	ng/L	1.96	1763-23-1-LN	
PFOS-BR*	2.8	2.0	1.2	ng/L	1.96	1763-23-1-BR	
PFUnDA*	Not detected	2.0	0.98	ng/L	1.96	2058-94-8	
PFNS*	Not detected	2.0	0.98	ng/L	1.96	68259-12-1	
PFDODA*	Not detected	2.0	0.59	ng/L	1.96	307-55-1	
PFDS*	Not detected	2.0	1.2	ng/L	1.96	335-77-3	
PFTTrDA*	Not detected	2.0	0.98	ng/L	1.96	72629-94-8	
FOSA*	Not detected	2.0	0.78	ng/L	1.96	754-91-6	
PFTeDA*	Not detected	3.9	0.39	ng/L	1.96	376-06-7	
11Cl-PF3OUdS*	Not detected	2.0	0.78	ng/L	1.96	763051-92-9	
9Cl-PF3ONS*	Not detected	2.0	0.78	ng/L	1.96	756426-58-1	
ADONA*	Not detected	2.0	0.98	ng/L	1.96	919005-14-4	
HFPO-DA*	Not detected	9.8	2.0	ng/L	1.96	13252-13-6	
FHpPA (7:3 FTCA)*	Not detected	9.8	2.0	ng/L	1.96	812-70-4	
FPePA (5:3 FTCA)*	Not detected	9.8	2.0	ng/L	1.96	914637-49-3	
FPrPA (3:3 FTCA)*	Not detected	9.8	0.98	ng/L	1.96	356-02-5	
PFBSA*	Not detected	2.0	1.2	ng/L	1.96	30334-69-1	
PFECHS*	4.0	2.0	0.98	ng/L	1.96	67584-42-3	



Analytical Laboratory Report

Lab Sample ID: S72614.03 (continued)

Sample Tag: SS-14-20250320

34 PFAs, Method: ASTMD7979-19M, Run Date: 03/21/25 15:18, Analyst: CED (continued)

Parameter	Result	RL	MDL	Units	Dilution	CAS#	Flags
PFHxSA*	Not detected	2.0	0.78	ng/L	1.96	41997-13-1	



Analytical Laboratory Report

Lab Sample ID: S72614.04

Sample Tag: SS-15-20250320

Collected Date/Time: 03/20/2025 10:54

Matrix: Liquid

COC Reference: 69303

Sample Containers

#	Type	Preservative(s)	Refrigerated?	Arrival Temp. (C)	Thermometer #
1	15mL Centrifuge Tube	None	Yes	4.9	IR

Extraction / Prep.

Parameter	Result	Method	Run Date	Analyst	Flags
Initial wt. (g) / Final wt. (g) / Volume (ml)*	11.52/6.48/10	ASTMD7979-19M	03/21/25 11:30	CED	

Organics

34 PFAs, Method: ASTMD7979-19M, Run Date: 03/21/25 15:38, Analyst: CED

Parameter	Result	RL	MDL	Units	Dilution	CAS#	Flags
PFBA*	Not detected	9.9	1.6	ng/L	1.98	375-22-4	
PFPeA*	Not detected	4.0	0.79	ng/L	1.98	2706-90-3	
4:2 FTSA*	Not detected	2.0	0.79	ng/L	1.98	757124-72-4	
PFHxA*	3.2	2.0	0.40	ng/L	1.98	307-24-4	
PFBS*	2.3	2.0	0.79	ng/L	1.98	375-73-5	
PFHpA*	1.3	2.0	0.99	ng/L	1.98	375-85-9	J
PFPeS*	1.3	2.0	0.79	ng/L	1.98	2706-91-4	J
6:2 FTSA*	Not detected	2.0	1.2	ng/L	1.98	27619-97-2	
PFOA*	2.7	2.0	1.6	ng/L	1.98	335-67-1	
PFHxS*	2.5	2.0	1.2	ng/L	1.98	355-46-4	
PFHxS-LN*	2.5	2.0	1.2	ng/L	1.98	355-46-4-LN	
PFHxS-BR*	Not detected	2.0	1.2	ng/L	1.98	355-46-4-BR	
PFNA*	Not detected	2.0	0.79	ng/L	1.98	375-95-1	
8:2 FTSA*	Not detected	2.0	0.99	ng/L	1.98	39108-34-4	
PFHpS*	Not detected	2.0	1.2	ng/L	1.98	375-92-8	
PFDA*	0.77	2.0	0.59	ng/L	1.98	335-76-2	J
N-MeFOSAA*	Not detected	2.0	1.4	ng/L	1.98	2355-31-9	
EtFOSAA*	Not detected	4.0	2.0	ng/L	1.98	2991-50-6	
PFOS*	180	2.0	1.2	ng/L	1.98	1763-23-1	
PFOS-LN*	130	2.0	1.2	ng/L	1.98	1763-23-1-LN	
PFOS-BR*	38	2.0	1.2	ng/L	1.98	1763-23-1-BR	
PFUnDA*	Not detected	2.0	0.99	ng/L	1.98	2058-94-8	
PFNS*	Not detected	2.0	0.99	ng/L	1.98	68259-12-1	
PFDODA*	Not detected	2.0	0.59	ng/L	1.98	307-55-1	
PFDS*	Not detected	2.0	1.2	ng/L	1.98	335-77-3	
PFTTrDA*	Not detected	2.0	0.99	ng/L	1.98	72629-94-8	
FOSA*	Not detected	2.0	0.79	ng/L	1.98	754-91-6	
PFTeDA*	Not detected	4.0	0.40	ng/L	1.98	376-06-7	
11Cl-PF3OUdS*	Not detected	2.0	0.79	ng/L	1.98	763051-92-9	
9Cl-PF3ONS*	Not detected	2.0	0.79	ng/L	1.98	756426-58-1	
ADONA*	Not detected	2.0	0.99	ng/L	1.98	919005-14-4	
HFPO-DA*	Not detected	9.9	2.0	ng/L	1.98	13252-13-6	
FHpPA (7:3 FTCA)*	Not detected	9.9	2.0	ng/L	1.98	812-70-4	
FPePA (5:3 FTCA)*	Not detected	9.9	2.0	ng/L	1.98	914637-49-3	
FPrPA (3:3 FTCA)*	Not detected	9.9	0.99	ng/L	1.98	356-02-5	
PFBSA*	Not detected	2.0	1.2	ng/L	1.98	30334-69-1	

J-Estimated value less than reporting limit, but greater than MDL



Analytical Laboratory Report

Lab Sample ID: S72614.04 (continued)

Sample Tag: SS-15-20250320

34 PFAs, Method: ASTMD7979-19M, Run Date: 03/21/25 15:38, Analyst: CED (continued)

Parameter	Result	RL	MDL	Units	Dilution	CAS#	Flags
PFECHS*	89	2.0	0.99	ng/L	1.98	67584-42-3	
PFHxSA*	Not detected	2.0	0.79	ng/L	1.98	41997-13-1	



Analytical Laboratory Report

Lab Sample ID: S72614.05

Sample Tag: SS-16-20250320

Collected Date/Time: 03/20/2025 10:44

Matrix: Liquid

COC Reference: 69303

Sample Containers

#	Type	Preservative(s)	Refrigerated?	Arrival Temp. (C)	Thermometer #
1	15mL Centrifuge Tube	None	Yes	4.9	IR

Extraction / Prep.

Parameter	Result	Method	Run Date	Analyst	Flags
Initial wt. (g) / Final wt. (g) / Volume (ml)*	11.83/6.48/11	ASTMD7979-19M	03/21/25 11:30	CED	

Organics

34 PFAs, Method: ASTMD7979-19M, Run Date: 03/21/25 16:18, Analyst: CED

Parameter	Result	RL	MDL	Units	Dilution	CAS#	Flags
PFBA*	Not detected	15	1.6	ng/L	2.06	375-22-4	X
PFPeA*	3.6	4.1	0.82	ng/L	2.06	2706-90-3	J
4:2 FTSA*	Not detected	2.1	0.82	ng/L	2.06	757124-72-4	
PFHxA*	4.6	2.1	0.41	ng/L	2.06	307-24-4	
PFBS*	1.9	2.1	0.82	ng/L	2.06	375-73-5	J
PFHpA*	2.5	2.1	1.0	ng/L	2.06	375-85-9	
PFPeS*	Not detected	2.1	0.82	ng/L	2.06	2706-91-4	
6:2 FTSA*	Not detected	2.1	1.2	ng/L	2.06	27619-97-2	
PFOA*	6.2	2.1	1.6	ng/L	2.06	335-67-1	
PFHxS*	3.9	2.1	1.2	ng/L	2.06	355-46-4	
PFHxS-LN*	2.8	2.1	1.2	ng/L	2.06	355-46-4-LN	
PFHxS-BR*	Not detected	2.1	1.2	ng/L	2.06	355-46-4-BR	
PFNA*	1.9	2.1	0.82	ng/L	2.06	375-95-1	J
8:2 FTSA*	Not detected	2.1	1.0	ng/L	2.06	39108-34-4	
PFHpS*	1.9	2.1	1.2	ng/L	2.06	375-92-8	J
PFDA*	1.7	2.1	0.62	ng/L	2.06	335-76-2	J
N-MeFOSAA*	Not detected	2.1	1.4	ng/L	2.06	2355-31-9	
EtFOSAA*	Not detected	4.1	2.1	ng/L	2.06	2991-50-6	
PFOS*	290	2.1	1.2	ng/L	2.06	1763-23-1	
PFOS-LN*	250	2.1	1.2	ng/L	2.06	1763-23-1-LN	
PFOS-BR*	34	2.1	1.2	ng/L	2.06	1763-23-1-BR	
PFUnDA*	Not detected	2.1	1.0	ng/L	2.06	2058-94-8	
PFNS*	Not detected	2.1	1.0	ng/L	2.06	68259-12-1	
PFDODA*	Not detected	2.1	0.62	ng/L	2.06	307-55-1	
PFDS*	Not detected	2.1	1.2	ng/L	2.06	335-77-3	
PFTTrDA*	Not detected	2.1	1.0	ng/L	2.06	72629-94-8	
FOSA*	Not detected	2.1	0.82	ng/L	2.06	754-91-6	
PFTeDA*	Not detected	4.1	0.41	ng/L	2.06	376-06-7	
11Cl-PF3OUdS*	Not detected	2.1	0.82	ng/L	2.06	763051-92-9	
9Cl-PF3ONS*	Not detected	2.1	0.82	ng/L	2.06	756426-58-1	
ADONA*	Not detected	2.1	1.0	ng/L	2.06	919005-14-4	
HFPO-DA*	Not detected	10	2.1	ng/L	2.06	13252-13-6	
FHpPA (7:3 FTCA)*	Not detected	10	2.1	ng/L	2.06	812-70-4	
FPePA (5:3 FTCA)*	Not detected	10	2.1	ng/L	2.06	914637-49-3	
FPrPA (3:3 FTCA)*	Not detected	10	1.0	ng/L	2.06	356-02-5	

X-Elevated reporting limit due to matrix interference

J-Estimated value less than reporting limit, but greater than MDL



Analytical Laboratory Report

Lab Sample ID: S72614.05 (continued)

Sample Tag: SS-16-20250320

34 PFAs, Method: ASTMD7979-19M, Run Date: 03/21/25 16:18, Analyst: CED (continued)

Parameter	Result	RL	MDL	Units	Dilution	CAS#	Flags
PFBSA*	Not detected	2.1	1.2	ng/L	2.06	30334-69-1	
PFECHS*	78	2.1	1.0	ng/L	2.06	67584-42-3	
PFHxSA*	Not detected	2.1	0.82	ng/L	2.06	41997-13-1	



Analytical Laboratory Report

Lab Sample ID: S72614.06

Sample Tag: MH-10E-W-20250320

Collected Date/Time: 03/20/2025 12:00

Matrix: Liquid

COC Reference: 69303

Sample Containers

#	Type	Preservative(s)	Refrigerated?	Arrival Temp. (C)	Thermometer #
1	15mL Centrifuge Tube	None	Yes	4.9	IR

Extraction / Prep.

Parameter	Result	Method	Run Date	Analyst	Flags
Initial wt. (g) / Final wt. (g) / Volume (ml)*	11.87/6.48/11	ASTMD7979-19M	03/21/25 11:30	CED	

Organics

34 PFAs, Method: ASTMD7979-19M, Run Date: 03/21/25 16:38, Analyst: CED

Parameter	Result	RL	MDL	Units	Dilution	CAS#	Flags
PFBA*	Not detected	10	1.6	ng/L	2.04	375-22-4	
PFPeA*	Not detected	4.1	0.82	ng/L	2.04	2706-90-3	
4:2 FTSA*	Not detected	2.0	0.82	ng/L	2.04	757124-72-4	
PFHxA*	Not detected	2.0	0.41	ng/L	2.04	307-24-4	
PFBS*	Not detected	2.0	0.82	ng/L	2.04	375-73-5	
PFHpA*	Not detected	2.0	1.0	ng/L	2.04	375-85-9	
PFPeS*	Not detected	2.0	0.82	ng/L	2.04	2706-91-4	
6:2 FTSA*	Not detected	2.0	1.2	ng/L	2.04	27619-97-2	
PFOA*	Not detected	2.0	1.6	ng/L	2.04	335-67-1	
PFHxS*	Not detected	2.0	1.2	ng/L	2.04	355-46-4	
PFHxS-LN*	Not detected	2.0	1.2	ng/L	2.04	355-46-4-LN	
PFHxS-BR*	Not detected	2.0	1.2	ng/L	2.04	355-46-4-BR	
PFNA*	Not detected	2.0	0.82	ng/L	2.04	375-95-1	
8:2 FTSA*	Not detected	2.0	1.0	ng/L	2.04	39108-34-4	
PFHpS*	Not detected	2.0	1.2	ng/L	2.04	375-92-8	
PFDA*	Not detected	2.0	0.61	ng/L	2.04	335-76-2	
N-MeFOSAA*	Not detected	2.0	1.4	ng/L	2.04	2355-31-9	
EtFOSAA*	Not detected	4.1	2.0	ng/L	2.04	2991-50-6	
PFOS*	6.5	2.0	1.2	ng/L	2.04	1763-23-1	
PFOS-LN*	3.7	2.0	1.2	ng/L	2.04	1763-23-1-LN	
PFOS-BR*	2.9	2.0	1.2	ng/L	2.04	1763-23-1-BR	
PFUnDA*	Not detected	2.0	1.0	ng/L	2.04	2058-94-8	
PFNS*	Not detected	2.0	1.0	ng/L	2.04	68259-12-1	
PFDODA*	Not detected	2.0	0.61	ng/L	2.04	307-55-1	
PFDS*	Not detected	2.0	1.2	ng/L	2.04	335-77-3	
PFTTrDA*	Not detected	2.0	1.0	ng/L	2.04	72629-94-8	
FOSA*	Not detected	2.0	0.82	ng/L	2.04	754-91-6	
PFTeDA*	Not detected	4.1	0.41	ng/L	2.04	376-06-7	
11Cl-PF3OUdS*	Not detected	2.0	0.82	ng/L	2.04	763051-92-9	
9Cl-PF3ONS*	Not detected	2.0	0.82	ng/L	2.04	756426-58-1	
ADONA*	Not detected	2.0	1.0	ng/L	2.04	919005-14-4	
HFPO-DA*	Not detected	10	2.0	ng/L	2.04	13252-13-6	
FHpPA (7:3 FTCA)*	Not detected	10	2.0	ng/L	2.04	812-70-4	
FPePA (5:3 FTCA)*	Not detected	10	2.0	ng/L	2.04	914637-49-3	
FPrPA (3:3 FTCA)*	Not detected	10	1.0	ng/L	2.04	356-02-5	
PFBSA*	Not detected	2.0	1.2	ng/L	2.04	30334-69-1	
PFECHS*	1.0	2.0	1.0	ng/L	2.04	67584-42-3	J

J-Estimated value less than reporting limit, but greater than MDL



Analytical Laboratory Report

Lab Sample ID: S72614.06 (continued)

Sample Tag: MH-10E-W-20250320

34 PFAs, Method: ASTMD7979-19M, Run Date: 03/21/25 16:38, Analyst: CED (continued)

Parameter	Result	RL	MDL	Units	Dilution	CAS#	Flags
PFHxSA*	Not detected	2.0	0.82	ng/L	2.04	41997-13-1	



Analytical Laboratory Report

Lab Sample ID: S72614.07

Sample Tag: SS-23-20250320

Collected Date/Time: 03/20/2025 11:42

Matrix: Liquid

COC Reference: 69303

Sample Containers

#	Type	Preservative(s)	Refrigerated?	Arrival Temp. (C)	Thermometer #
1	15mL Centrifuge Tube	None	Yes	4.9	IR

Extraction / Prep.

Parameter	Result	Method	Run Date	Analyst	Flags
Initial wt. (g) / Final wt. (g) / Volume (ml)*	11.50/6.48/10	ASTMD7979-19M	03/21/25 11:30	CED	

Organics

34 PFAs, Method: ASTMD7979-19M, Run Date: 03/21/25 17:18, Analyst: CED

Parameter	Result	RL	MDL	Units	Dilution	CAS#	Flags
PFBA*	Not detected	10.0	1.6	ng/L	1.99	375-22-4	
PFPeA*	Not detected	4.0	0.80	ng/L	1.99	2706-90-3	
4:2 FTSA*	Not detected	2.0	0.80	ng/L	1.99	757124-72-4	
PFHxA*	4.2	2.0	0.40	ng/L	1.99	307-24-4	
PFBS*	2.4	2.0	0.80	ng/L	1.99	375-73-5	
PFHpA*	Not detected	2.0	1.00	ng/L	1.99	375-85-9	
PFPeS*	1.4	2.0	0.80	ng/L	1.99	2706-91-4	J
6:2 FTSA*	Not detected	2.0	1.2	ng/L	1.99	27619-97-2	
PFOA*	2.7	2.0	1.6	ng/L	1.99	335-67-1	
PFHxS*	5.0	2.0	1.2	ng/L	1.99	355-46-4	
PFHxS-LN*	3.9	2.0	1.2	ng/L	1.99	355-46-4-LN	
PFHxS-BR*	Not detected	2.0	1.2	ng/L	1.99	355-46-4-BR	
PFNA*	Not detected	2.0	0.80	ng/L	1.99	375-95-1	
8:2 FTSA*	Not detected	2.0	1.00	ng/L	1.99	39108-34-4	
PFHpS*	Not detected	2.0	1.2	ng/L	1.99	375-92-8	
PFDA*	0.66	2.0	0.60	ng/L	1.99	335-76-2	J
N-MeFOSAA*	Not detected	2.0	1.4	ng/L	1.99	2355-31-9	
EtFOSAA*	Not detected	4.0	2.0	ng/L	1.99	2991-50-6	
PFOS*	210	2.0	1.2	ng/L	1.99	1763-23-1	
PFOS-LN*	150	2.0	1.2	ng/L	1.99	1763-23-1-LN	
PFOS-BR*	52	2.0	1.2	ng/L	1.99	1763-23-1-BR	
PFUnDA*	Not detected	2.0	1.00	ng/L	1.99	2058-94-8	
PFNS*	Not detected	2.0	1.00	ng/L	1.99	68259-12-1	
PFDODA*	Not detected	2.0	0.60	ng/L	1.99	307-55-1	
PFDS*	Not detected	2.0	1.2	ng/L	1.99	335-77-3	
PFTTrDA*	Not detected	2.0	1.00	ng/L	1.99	72629-94-8	
FOSA*	Not detected	2.0	0.80	ng/L	1.99	754-91-6	
PFTeDA*	Not detected	4.0	0.40	ng/L	1.99	376-06-7	
11Cl-PF3OUdS*	Not detected	2.0	0.80	ng/L	1.99	763051-92-9	
9Cl-PF3ONS*	Not detected	2.0	0.80	ng/L	1.99	756426-58-1	
ADONA*	Not detected	2.0	1.00	ng/L	1.99	919005-14-4	
HFPO-DA*	Not detected	10.0	2.0	ng/L	1.99	13252-13-6	
FHpPA (7:3 FTCA)*	Not detected	10.0	2.0	ng/L	1.99	812-70-4	
FPePA (5:3 FTCA)*	Not detected	10.0	2.0	ng/L	1.99	914637-49-3	
FPrPA (3:3 FTCA)*	Not detected	10.0	1.00	ng/L	1.99	356-02-5	
PFBSA*	Not detected	2.0	1.2	ng/L	1.99	30334-69-1	

J-Estimated value less than reporting limit, but greater than MDL



Analytical Laboratory Report

Lab Sample ID: S72614.07 (continued)

Sample Tag: SS-23-20250320

34 PFAs, Method: ASTMD7979-19M, Run Date: 03/21/25 17:18, Analyst: CED (continued)

Parameter	Result	RL	MDL	Units	Dilution	CAS#	Flags
PFECHS*	120	2.0	1.00	ng/L	1.99	67584-42-3	
PFHxSA*	Not detected	2.0	0.80	ng/L	1.99	41997-13-1	

Merit Laboratories Login Checklist

Lab Set ID:S72614

Client:RAMBOLL (Ramboll Americas)

Project: RACER Coldwater Rd

Submitted:03/20/2025 15:40 Login User: JEH

Attention: Clifford Yantz

Address: Ramboll Americas
2090 Commonwealth Blvd
Ann Arbor, MI 48105

Phone: 313-333-0211 FAX:
Email: Clifford.Yantz@ramboll.com

Selection	Description	Note
-----------	-------------	------

Sample Receiving

- | | | |
|-----|--|--|
| 01. | <input checked="" type="checkbox"/> Yes <input type="checkbox"/> No <input type="checkbox"/> N/A | Samples are received at 4C +/- 2C Thermometer # IR: 4.9C |
| 02. | <input checked="" type="checkbox"/> Yes <input type="checkbox"/> No <input type="checkbox"/> N/A | Received on ice/ cooling process begun |
| 03. | <input type="checkbox"/> Yes <input checked="" type="checkbox"/> No <input type="checkbox"/> N/A | Samples shipped |
| 04. | <input type="checkbox"/> Yes <input checked="" type="checkbox"/> No <input type="checkbox"/> N/A | Samples left in 24 hr. drop box |
| 05. | <input type="checkbox"/> Yes <input type="checkbox"/> No <input checked="" type="checkbox"/> N/A | Are there custody seals/tape or is the drop box locked |

Chain of Custody

- | | | |
|-----|--|--|
| 06. | <input checked="" type="checkbox"/> Yes <input type="checkbox"/> No <input type="checkbox"/> N/A | COC adequately filled out |
| 07. | <input checked="" type="checkbox"/> Yes <input type="checkbox"/> No <input type="checkbox"/> N/A | COC signed and relinquished to the lab |
| 08. | <input checked="" type="checkbox"/> Yes <input type="checkbox"/> No <input type="checkbox"/> N/A | Sample tag on bottles match COC |
| 09. | <input type="checkbox"/> Yes <input checked="" type="checkbox"/> No <input type="checkbox"/> N/A | Subcontracting needed? Subcontracted to: |

Preservation

- | | | |
|-----|--|---|
| 10. | <input checked="" type="checkbox"/> Yes <input type="checkbox"/> No <input type="checkbox"/> N/A | Do sample have correct chemical preservation |
| 11. | <input type="checkbox"/> Yes <input type="checkbox"/> No <input checked="" type="checkbox"/> N/A | Completed pH checks on preserved samples? (no VOAs) |
| 12. | <input type="checkbox"/> Yes <input checked="" type="checkbox"/> No <input type="checkbox"/> N/A | Did any samples need to be preserved in the lab? |

Bottle Conditions

- | | | |
|-----|--|---|
| 13. | <input checked="" type="checkbox"/> Yes <input type="checkbox"/> No <input type="checkbox"/> N/A | All bottles intact |
| 14. | <input checked="" type="checkbox"/> Yes <input type="checkbox"/> No <input type="checkbox"/> N/A | Appropriate analytical bottles are used |
| 15. | <input checked="" type="checkbox"/> Yes <input type="checkbox"/> No <input type="checkbox"/> N/A | Merit bottles used |
| 16. | <input checked="" type="checkbox"/> Yes <input type="checkbox"/> No <input type="checkbox"/> N/A | Sufficient sample volume received |
| 17. | <input type="checkbox"/> Yes <input checked="" type="checkbox"/> No <input type="checkbox"/> N/A | Samples require laboratory filtration |
| 18. | <input checked="" type="checkbox"/> Yes <input type="checkbox"/> No <input type="checkbox"/> N/A | Samples submitted within holding time |
| 19. | <input type="checkbox"/> Yes <input type="checkbox"/> No <input checked="" type="checkbox"/> N/A | Do water VOC, TOX, DO or Alkalinity bottles contain |

Corrective action for all exceptions is to call the client and to notify the project manager.

Client Review By: _____ Date: _____

REPORT TO

CHAIN OF CUSTODY RECORD

INVOICE T

CONTACT NAME *Kevin Schneider / Clifford Yantz*
 COMPANY *Ramboll*
 ADDRESS *2090 Commonwealth Blvd*
 CITY *Ann Arbor* STATE *MI* ZIP CODE *48105*
 PHONE NO. *313-333-0211* FAX NO. _____ P.O. NO. *1940011180 Task 37*
 E-MAIL ADDRESS *Kevin.Schneider@Ramboll.com* *Clifford.Yantz@Ramboll.com* QUOTE NO. _____

CONTACT NAME *K SAME*
 COMPANY _____
 ADDRESS _____
 CITY _____ STATE _____ ZIP CODE _____
 PHONE NO. _____ E-MAIL ADDRESS _____

PROJECT NO./NAME *RAGER Coldwater Rd* SAMPLER(S) - PLEASE PRINT/SIGN NAME *Kevin Schneider K SLL*
 TURNAROUND TIME REQUIRED 1 DAY 2 DAYS 3 DAYS STANDARD OTHER _____
 DELIVERABLES REQUIRED LEVEL II LEVEL III LEVEL IV EDD OTHER _____

MATRIX CODE: GW=GROUNDWATER WW=WASTEWATER S=SOIL L=LIQUID SD=SOLID
 SL=SLUDGE DW=DRINKING WATER O=OIL WP=WIPE A=AIR W=WASTE

Containers & Preservatives

MERIT LAB NO. <small>FOR LAB USE ONLY</small>	YEAR		SAMPLE TAG IDENTIFICATION-DESCRIPTION	MATRIX	# OF BOTTLES	NONE	HCl	HNO ₃	H ₂ SO ₄	NaOH	MeOH	OTHER	PFAS (M79)	Certifications	
	DATE	TIME												<input type="checkbox"/> OHIO VAP	<input type="checkbox"/> Drinking W
<i>70614.01</i>	<i>3/20/25</i>	<i>1215</i>	<i>SS-10-20250320</i>	<i>L</i>	<i>3</i>	<i>X</i>							<i>X</i>	<input type="checkbox"/> DoD	<input type="checkbox"/> NPDES
<i>.02</i>	<i>1110</i>		<i>SS-12-20250320</i>	<i>L</i>	<i>3</i>	<i>X</i>							<i>X</i>	<input type="checkbox"/> Detroit	<input type="checkbox"/> New York
<i>.03</i>	<i>1136</i>		<i>SS-14-20250320</i>	<i>L</i>	<i>3</i>	<i>X</i>							<i>X</i>	<input type="checkbox"/> Other	
<i>.04</i>	<i>1054</i>		<i>SS-15-20250320</i>	<i>L</i>	<i>3</i>	<i>X</i>							<i>X</i>	Special Instructions <i>low level reporting with estimated val</i>	
<i>.05</i>	<i>1044</i>		<i>SS-16-20250320</i>	<i>L</i>	<i>3</i>	<i>X</i>							<i>X</i>	<i>34 PFAS list</i>	
<i>.06</i>	<i>1200</i>		<i>MH-10E-W-20250320</i>	<i>L</i>	<i>3</i>	<i>X</i>							<i>X</i>	<i>Please provide es</i>	
<i>.07</i>	<i>1142</i>		<i>SS-23-20250320</i>	<i>L</i>	<i>3</i>	<i>X</i>							<i>X</i>		

RELINQUISHED BY: *[Signature]* Sampler DATE *3/20/25* TIME *12:30*
 SIGNATURE/ORGANIZATION _____
 RELINQUISHED BY: *[Signature]* DATE *3/20/25* TIME *1:00*
 SIGNATURE/ORGANIZATION _____
 RELINQUISHED BY: *[Signature]* DATE *3/20/25* TIME *1:54*
 SIGNATURE/ORGANIZATION _____
 RELINQUISHED BY: *[Signature]* DATE *3/20/25* TIME *1:40*
 SIGNATURE/ORGANIZATION _____

RELINQUISHED BY: _____ DATE _____ TIME _____
 SIGNATURE/ORGANIZATION _____
 RELINQUISHED BY: _____ DATE _____ TIME _____
 SIGNATURE/ORGANIZATION _____
 SEAL NO. _____ SEAL INTACT YES NO INITIALS _____ NOTES: _____ TEMP. ON ARRIVAL *4.9*
 SEAL NO. _____ SEAL INTACT YES NO INITIALS _____



Quality Control Report

Report ID: QC-S72614-01
Generated on 04/08/2025

Report to
Attention: Clifford Yantz
Ramboll Americas
2090 Commonwealth Blvd
Ann Arbor, MI 48105

Report Produced by
Merit Laboratories
2680 East Lansing Drive
East Lansing, MI 48823

Phone: 313-333-0211 FAX:

Phone: (517) 332-0167 FAX: (517) 332-6333

Report Summary

Lab Sample ID(s): S72614.01-S72614.07
Project: RACER Coldwater Rd
Submitted Date/Time: 03/20/2025 15:40
Sampled by: Kevin Schneider
P.O. #: 1940011180 TASK 37

QC Report Sections

Cover Page (Page 1)
Analysis Summary (Pages 2-8)
Prep Batch Summary (Page 9)
Internal Standards per Lab Sample (Pages 10-16)
Internal Standards per QC Sample (Pages 17-24)
Batch QC Results (Pages 25-32)

Report Flag Descriptions

*: QC result is outside of indicated control limits
W: Surrogate result not applicable due to sample dilution

I certify that this data package is in compliance with the terms and conditions of the program, and project, and contractual requirements both technically and for completeness. Release of the data contained in this hardcopy data package and its computer-readable data submitted has been authorized by the Quality Assurance Manager and his/her designee, as verified by the following signature.

Barbara Ball
Quality Assurance Manager

QC Report - Analysis Summary

Lab Sample ID: S72614.01

Sample Tag: SS-10-20250320

Collected Date/Time: 03/20/2025 12:15

Matrix: Liquid

COC Reference: 69303

Analysis	Method	Run Date/Time	Batch ID	Prep ID	Surr	QC Types
Organics - Volatiles						
34 PFAs	ASTMD7979-19M	03/21/25 14:38	SE250321W1	PF250321W1	Yes	BLK/LCS/LCSD/MS/DU

QC Report - Analysis Summary

Lab Sample ID: S72614.02

Sample Tag: SS-12-20250320

Collected Date/Time: 03/20/2025 11:10

Matrix: Liquid

COC Reference: 69303

Analysis	Method	Run Date/Time	Batch ID	Prep ID	Surr	QC Types
Organics - Volatiles						
34 PFAs	ASTMD7979-19M	03/21/25 14:58	SE250321W1	PF250321W1	Yes	BLK/LCS/LCSD/MS/DU

QC Report - Analysis Summary

Lab Sample ID: S72614.03

Sample Tag: SS-14-20250320

Collected Date/Time: 03/20/2025 11:36

Matrix: Liquid

COC Reference: 69303

Analysis	Method	Run Date/Time	Batch ID	Prep ID	Surr	QC Types
Organics - Volatiles						
34 PFAs	ASTMD7979-19M	03/21/25 15:18	SE250321W1	PF250321W1	Yes	BLK/LCS/LCSD/MS/DU

QC Report - Analysis Summary

Lab Sample ID: S72614.04

Sample Tag: SS-15-20250320

Collected Date/Time: 03/20/2025 10:54

Matrix: Liquid

COC Reference: 69303

Analysis	Method	Run Date/Time	Batch ID	Prep ID	Surr	QC Types
Organics - Volatiles						
34 PFAs	ASTMD7979-19M	03/21/25 15:38	SE250321W1	PF250321W1	Yes	BLK/LCS/LCSD/MS/DU

QC Report - Analysis Summary

Lab Sample ID: S72614.05

Sample Tag: SS-16-20250320

Collected Date/Time: 03/20/2025 10:44

Matrix: Liquid

COC Reference: 69303

Analysis	Method	Run Date/Time	Batch ID	Prep ID	Surr	QC Types
Organics - Volatiles						
34 PFAs	ASTMD7979-19M	03/21/25 16:18	SE250321W1	PF250321W1	Yes	BLK/LCS/LCSD/MS/DU

QC Report - Analysis Summary

Lab Sample ID: S72614.06

Sample Tag: MH-10E-W-20250320

Collected Date/Time: 03/20/2025 12:00

Matrix: Liquid

COC Reference: 69303

Analysis	Method	Run Date/Time	Batch ID	Prep ID	Surr	QC Types
Organics - Volatiles						
34 PFAs	ASTMD7979-19M	03/21/25 16:38	SE250321W1	PF250321W1	Yes	BLK/LCS/LCSD/MS/DU

QC Report - Analysis Summary

Lab Sample ID: S72614.07

Sample Tag: SS-23-20250320

Collected Date/Time: 03/20/2025 11:42

Matrix: Liquid

COC Reference: 69303

Analysis	Method	Run Date/Time	Batch ID	Prep ID	Surr	QC Types
Organics - Volatiles						
34 PFAs	ASTMD7979-19M	03/21/25 17:18	SE250321W1	PF250321W1	Yes	BLK/LCS/LCSD/MS/DU

QC Report - Prep Batch Summary

Organics - Volatiles, Prep Batch ID: PF250321W1

Surrogates: Yes, QC Types: BLK/LCS/LCSD/MS/DUP

Sample ID	Analysis	Method	Run Date/Time	Batch ID
S72614.01	34 PFAs	ASTMD7979-19M	03/21/25 14:38	SE250321W1
S72614.02	34 PFAs	ASTMD7979-19M	03/21/25 14:58	SE250321W1
S72614.03	34 PFAs	ASTMD7979-19M	03/21/25 15:18	SE250321W1
S72614.04	34 PFAs	ASTMD7979-19M	03/21/25 15:38	SE250321W1
S72614.05	34 PFAs	ASTMD7979-19M	03/21/25 16:18	SE250321W1
S72614.06	34 PFAs	ASTMD7979-19M	03/21/25 16:38	SE250321W1
S72614.07	34 PFAs	ASTMD7979-19M	03/21/25 17:18	SE250321W1

QC Report - Internal Standards per Lab Sample

Lab Sample ID: S72614.01

Sample Tag: SS-10-20250320

Collected Date/Time: 03/20/2025 12:15

Matrix: Liquid

COC Reference: 69303

Organics - Volatiles, Analysis: 34 PFAs

Run in Batch: SE250321W1, Run Date: 03/21/2025 14:38, Matrix: WW, Dilution: 1.9

Internal Standard	Flags	%Rec	LCL	UCL
M2-4:2FTSA		116.0	50.0	150.0
M2-6:2FTSA		97.0	50.0	150.0
M2-8:2FTSA		90.2	50.0	150.0
M2PFTeDA		137.5	12.0	218.0
M3PFBS		114.5	50.0	150.0
M3PFHxS		115.5	50.0	150.0
M4PFHpA		101.0	50.0	150.0
M5PFHxA		113.5	50.0	150.0
M5PFPeA		107.9	50.0	150.0
M6PFDA		106.8	50.0	150.0
M7PFUnDA		109.6	50.0	150.0
M8FOSA		103.8	50.0	150.0
M8PFOA		107.4	50.0	150.0
M8PFOS		102.4	50.0	150.0
M9-PFNA		102.9	50.0	150.0
MPFBA		117.2	50.0	150.0
MPFDoDA		117.2	50.0	150.0
d3N-MeFOSAA		103.8	50.0	150.0
d5EtFOSAA		114.0	50.0	150.0
MHFPO-DA		96.9	50.0	150.0

QC Report - Internal Standards per Lab Sample

Lab Sample ID: S72614.02

Sample Tag: SS-12-20250320

Collected Date/Time: 03/20/2025 11:10

Matrix: Liquid

COC Reference: 69303

Organics - Volatiles, Analysis: 34 PFAs

Run in Batch: SE250321W1, Run Date: 03/21/2025 14:58, Matrix: WW, Dilution: 2.03

Internal Standard	Flags	%Rec	LCL	UCL
M2-4:2FTSA		121.2	50.0	150.0
M2-6:2FTSA		110.9	50.0	150.0
M2-8:2FTSA		118.3	50.0	150.0
M2PFTeDA		145.7	12.0	218.0
M3PFBS		124.1	50.0	150.0
M3PFHxS		119.4	50.0	150.0
M4PFHpA		112.7	50.0	150.0
M5PFHxA		126.6	50.0	150.0
M5PFPeA		118.8	50.0	150.0
M6PFDA		121.9	50.0	150.0
M7PFUnDA		122.2	50.0	150.0
M8FOSA		112.5	50.0	150.0
M8PFOA		113.2	50.0	150.0
M8PFOS		112.5	50.0	150.0
M9-PFNA		118.4	50.0	150.0
MPFBA		123.0	50.0	150.0
MPFDoDA		128.2	50.0	150.0
d3N-MeFOSAA		118.2	50.0	150.0
d5EtFOSAA		127.6	50.0	150.0
MHFPO-DA		105.7	50.0	150.0

QC Report - Internal Standards per Lab Sample

Lab Sample ID: S72614.03

Sample Tag: SS-14-20250320

Collected Date/Time: 03/20/2025 11:36

Matrix: Liquid

COC Reference: 69303

Organics - Volatiles, Analysis: 34 PFAs

Run in Batch: SE250321W1, Run Date: 03/21/2025 15:18, Matrix: WW, Dilution: 1.96

Internal Standard	Flags	%Rec	LCL	UCL
M2-4:2FTSA		122.8	50.0	150.0
M2-6:2FTSA		106.8	50.0	150.0
M2-8:2FTSA		96.8	50.0	150.0
M2PFTeDA		133.0	12.0	218.0
M3PFBS		117.6	50.0	150.0
M3PFHxS		123.5	50.0	150.0
M4PFHpA		119.9	50.0	150.0
M5PFHxA		119.4	50.0	150.0
M5PFPeA		117.3	50.0	150.0
M6PFDA		112.0	50.0	150.0
M7PFUnDA		122.0	50.0	150.0
M8FOSA		109.9	50.0	150.0
M8PFOA		117.3	50.0	150.0
M8PFOS		112.9	50.0	150.0
M9-PFNA		120.3	50.0	150.0
MPFBA		121.9	50.0	150.0
MPFDoDA		121.1	50.0	150.0
d3N-MeFOSAA		107.0	50.0	150.0
d5EtFOSAA		126.7	50.0	150.0
MHFPO-DA		104.8	50.0	150.0

QC Report - Internal Standards per Lab Sample

Lab Sample ID: S72614.04

Sample Tag: SS-15-20250320

Collected Date/Time: 03/20/2025 10:54

Matrix: Liquid

COC Reference: 69303

Organics - Volatiles, Analysis: 34 PFAs

Run in Batch: SE250321W1, Run Date: 03/21/2025 15:38, Matrix: WW, Dilution: 1.98

Internal Standard	Flags	%Rec	LCL	UCL
M2-4:2FTSA		115.2	50.0	150.0
M2-6:2FTSA		108.3	50.0	150.0
M2-8:2FTSA		92.1	50.0	150.0
M2PFTeDA		112.1	12.0	218.0
M3PFBS		116.0	50.0	150.0
M3PFHxS		115.0	50.0	150.0
M4PFHpA		105.6	50.0	150.0
M5PFHxA		123.5	50.0	150.0
M5PFPeA		116.7	50.0	150.0
M6PFDA		115.3	50.0	150.0
M7PFUnDA		112.9	50.0	150.0
M8FOSA		109.3	50.0	150.0
M8PFOA		115.1	50.0	150.0
M8PFOS		102.9	50.0	150.0
M9-PFNA		110.3	50.0	150.0
MPFBA		122.8	50.0	150.0
MPFDoDA		121.9	50.0	150.0
d3N-MeFOSAA		109.5	50.0	150.0
d5EtFOSAA		117.1	50.0	150.0
MHFPO-DA		105.1	50.0	150.0

QC Report - Internal Standards per Lab Sample

Lab Sample ID: S72614.05

Sample Tag: SS-16-20250320

Collected Date/Time: 03/20/2025 10:44

Matrix: Liquid

COC Reference: 69303

Organics - Volatiles, Analysis: 34 PFAs

Run in Batch: SE250321W1, Run Date: 03/21/2025 16:18, Matrix: WW, Dilution: 2.06

Internal Standard	Flags	%Rec	LCL	UCL
M2-4:2FTSA		129.6	50.0	150.0
M2-6:2FTSA		113.1	50.0	150.0
M2-8:2FTSA		93.1	50.0	150.0
M2PFTeDA		133.3	12.0	218.0
M3PFBS		123.1	50.0	150.0
M3PFHxS		117.0	50.0	150.0
M4PFHpA		114.7	50.0	150.0
M5PFHxA		120.7	50.0	150.0
M5PFPeA		119.7	50.0	150.0
M6PFDA		121.8	50.0	150.0
M7PFUnDA		123.7	50.0	150.0
M8FOSA		111.8	50.0	150.0
M8PFOA		121.6	50.0	150.0
M8PFOS		108.7	50.0	150.0
M9-PFNA		120.4	50.0	150.0
MPFBA		129.5	50.0	150.0
MPFDoDA		124.8	50.0	150.0
d3N-MeFOSAA		114.2	50.0	150.0
d5EtFOSAA		124.1	50.0	150.0
MHFPO-DA		109.9	50.0	150.0

QC Report - Internal Standards per Lab Sample

Lab Sample ID: S72614.06

Sample Tag: MH-10E-W-20250320

Collected Date/Time: 03/20/2025 12:00

Matrix: Liquid

COC Reference: 69303

Organics - Volatiles, Analysis: 34 PFAs

Run in Batch: SE250321W1, Run Date: 03/21/2025 16:38, Matrix: WW, Dilution: 2.04

Internal Standard	Flags	%Rec	LCL	UCL
M2-4:2FTSA		114.8	50.0	150.0
M2-6:2FTSA		109.0	50.0	150.0
M2-8:2FTSA		106.0	50.0	150.0
M2PFTeDA		129.3	12.0	218.0
M3PFBS		117.3	50.0	150.0
M3PFHxS		116.4	50.0	150.0
M4PFHpA		115.7	50.0	150.0
M5PFHxA		117.0	50.0	150.0
M5PFPeA		117.3	50.0	150.0
M6PFDA		121.7	50.0	150.0
M7PFUnDA		121.3	50.0	150.0
M8FOSA		113.0	50.0	150.0
M8PFOA		117.2	50.0	150.0
M8PFOS		115.4	50.0	150.0
M9-PFNA		117.9	50.0	150.0
MPFBA		121.8	50.0	150.0
MPFDoDA		122.9	50.0	150.0
d3N-MeFOSAA		110.0	50.0	150.0
d5EtFOSAA		124.3	50.0	150.0
MHFPO-DA		104.9	50.0	150.0

QC Report - Internal Standards per Lab Sample

Lab Sample ID: S72614.07

Sample Tag: SS-23-20250320

Collected Date/Time: 03/20/2025 11:42

Matrix: Liquid

COC Reference: 69303

Organics - Volatiles, Analysis: 34 PFAs

Run in Batch: SE250321W1, Run Date: 03/21/2025 17:18, Matrix: WW, Dilution: 1.99

Internal Standard	Flags	%Rec	LCL	UCL
M2-4:2FTSA		114.5	50.0	150.0
M2-6:2FTSA		97.7	50.0	150.0
M2-8:2FTSA		96.0	50.0	150.0
M2PFTeDA		129.9	12.0	218.0
M3PFBS		113.4	50.0	150.0
M3PFHxS		108.8	50.0	150.0
M4PFHpA		112.5	50.0	150.0
M5PFHxA		109.6	50.0	150.0
M5PFPeA		112.2	50.0	150.0
M6PFDA		113.8	50.0	150.0
M7PFUnDA		118.7	50.0	150.0
M8FOSA		101.7	50.0	150.0
M8PFOA		108.0	50.0	150.0
M8PFOS		103.1	50.0	150.0
M9-PFNA		106.8	50.0	150.0
MPFBA		118.2	50.0	150.0
MPFDoDA		113.9	50.0	150.0
d3N-MeFOSAA		104.6	50.0	150.0
d5EtFOSAA		115.9	50.0	150.0
MHFPO-DA		104.8	50.0	150.0

QC Report - Internal Standards per QC Sample

Organics - Volatiles, Prep Batch ID: PF250321W1

QC Types: BLK/LCS/LCSD/MS/DUP

Blank (BLK)

Lab Sample ID: SE250321TOP.BLK250321

Run in Batch: SE250321TOP, Run Date: 03/21/2025 12:58, Prep Date: 03/21/2025, Matrix: WW, Dilution: 1

Internal Standard	Flags	%Rec	LCL	UCL
M2-4:2FTSA		97.2	50.0	150.0
M2-6:2FTSA		94.0	50.0	150.0
M2-8:2FTSA		90.8	50.0	150.0
M2PFTeDA		107.9	12.0	218.0
M3PFBS		109.4	50.0	150.0
M3PFHxS		107.6	50.0	150.0
M4PFHpA		98.2	50.0	150.0
M5PFHxA		110.6	50.0	150.0
M5PFPeA		105.3	50.0	150.0
M6PFDA		108.1	50.0	150.0
M7PFUnDA		107.9	50.0	150.0
M8FOSA		106.4	50.0	150.0
M8PFOA		105.5	50.0	150.0
M8PFOS		97.7	50.0	150.0
M9-PFNA		103.6	50.0	150.0
MPFBA		102.0	50.0	150.0
MPFDoDA		111.3	50.0	150.0
d3N-MeFOSAA		93.2	50.0	150.0
d5EtFOSAA		105.9	50.0	150.0
MHFPO-DA		94.7	50.0	150.0
d-N-EtFOSA-M		96.7	50.0	150.0
d-N-MeFOSA-M		111.9	50.0	150.0
d7-N-MeFOSE-M		101.3	50.0	150.0
d9-N-EtFOSE-M		108.2	50.0	150.0

QC Report - Internal Standards per QC Sample

Blank (BLK)

Lab Sample ID: SE250321W1.BLK250321

Run in Batch: SE250321W1, Run Date: 03/21/2025 12:58, Prep Date: 03/21/2025, Matrix: WW, Dilution: 1

Internal Standard	Flags	%Rec	LCL	UCL
M2-4:2FTSA		97.2	50.0	150.0
M2-6:2FTSA		94.0	50.0	150.0
M2-8:2FTSA		90.8	50.0	150.0
M2PFTeDA		107.9	12.0	218.0
M3PFBS		109.4	50.0	150.0
M3PFHxS		107.6	50.0	150.0
M4PFHpA		98.2	50.0	150.0
M5PFHxA		110.6	50.0	150.0
M5PFPeA		105.3	50.0	150.0
M6PFDA		108.1	50.0	150.0
M7PFUnDA		107.9	50.0	150.0
M8FOSA		106.4	50.0	150.0
M8PFOA		105.5	50.0	150.0
M8PFOS		97.7	50.0	150.0
M9-PFNA		103.6	50.0	150.0
MPFBA		102.0	50.0	150.0
MPFDoDA		111.3	50.0	150.0
d3N-MeFOSAA		93.2	50.0	150.0
d5EtFOSAA		105.9	50.0	150.0
MHFPO-DA		94.7	50.0	150.0

QC Report - Internal Standards per QC Sample

Laboratory Control Sample (LCS)

Lab Sample ID: SE250321TOP.LCS250321

Run in Batch: SE250321TOP, Run Date: 03/21/2025 12:18, Prep Date: 03/21/2025, Matrix: WW, Dilution: 1

Internal Standard	Flags	%Rec	LCL	UCL
M2-4:2FTSA		93.8	50.0	150.0
M2-6:2FTSA		94.4	50.0	150.0
M2-8:2FTSA		93.1	50.0	150.0
M2PFTeDA		109.3	12.0	218.0
M3PFBS		97.3	50.0	150.0
M3PFHxS		94.2	50.0	150.0
M4PFHpA		97.4	50.0	150.0
M5PFHxA		99.3	50.0	150.0
M5PFPeA		98.9	50.0	150.0
M6PFDA		100.5	50.0	150.0
M7PFUnDA		94.8	50.0	150.0
M8FOSA		91.3	50.0	150.0
M8PFOA		99.8	50.0	150.0
M8PFOS		89.7	50.0	150.0
M9-PFNA		99.3	50.0	150.0
MPFBA		94.8	50.0	150.0
MPFDoDA		103.0	50.0	150.0
d3N-MeFOSAA		83.9	50.0	150.0
d5EtFOSAA		101.0	50.0	150.0
MHFPO-DA		90.0	50.0	150.0
d-N-EtFOSA-M		93.8	50.0	150.0
d-N-MeFOSA-M		98.6	50.0	150.0
d7-N-MeFOSE-M		101.2	50.0	150.0
d9-N-EtFOSE-M		100.8	50.0	150.0

QC Report - Internal Standards per QC Sample

Laboratory Control Sample (LCS)

Lab Sample ID: SE250321W1.LCS250321

Run in Batch: SE250321W1, Run Date: 03/21/2025 12:18, Prep Date: 03/21/2025, Matrix: WW, Dilution: 1

Internal Standard	Flags	%Rec	LCL	UCL
M2-4:2FTSA		93.8	50.0	150.0
M2-6:2FTSA		94.4	50.0	150.0
M2-8:2FTSA		93.1	50.0	150.0
M2PFTeDA		109.3	12.0	218.0
M3PFBS		97.3	50.0	150.0
M3PFHxS		94.2	50.0	150.0
M4PFHpA		97.4	50.0	150.0
M5PFHxA		99.3	50.0	150.0
M5PFPeA		98.9	50.0	150.0
M6PFDA		100.5	50.0	150.0
M7PFUnDA		94.8	50.0	150.0
M8FOSA		91.3	50.0	150.0
M8PFOA		99.8	50.0	150.0
M8PFOS		89.7	50.0	150.0
M9-PFNA		99.3	50.0	150.0
MPFBA		94.8	50.0	150.0
MPFDoDA		103.0	50.0	150.0
d3N-MeFOSAA		83.9	50.0	150.0
d5EtFOSAA		101.0	50.0	150.0
MHFPO-DA		90.0	50.0	150.0

QC Report - Internal Standards per QC Sample

Laboratory Control Sample Duplicate (LCSD)

Lab Sample ID: SE250321TOP.LCSD250321, Parent Sample ID: SE250321TOP.LCS250321

Run in Batch: SE250321TOP, Run Date: 03/21/2025 12:38, Prep Date: 03/21/2025, Matrix: WW, Dilution: 1

Internal Standard	Flags	%Rec	LCL	UCL
M2-4:2FTSA		98.8	50.0	150.0
M2-6:2FTSA		102.9	50.0	150.0
M2-8:2FTSA		86.6	50.0	150.0
M2PFTeDA		92.3	12.0	218.0
M3PFBS		102.8	50.0	150.0
M3PFHxS		100.0	50.0	150.0
M4PFHpA		95.7	50.0	150.0
M5PFHxA		106.6	50.0	150.0
M5PFPeA		99.3	50.0	150.0
M6PFDA		96.8	50.0	150.0
M7PFUnDA		104.1	50.0	150.0
M8FOSA		93.7	50.0	150.0
M8PFOA		100.7	50.0	150.0
M8PFOS		96.0	50.0	150.0
M9-PFNA		104.1	50.0	150.0
MPFBA		96.4	50.0	150.0
MPFDoDA		104.0	50.0	150.0
d3N-MeFOSAA		89.1	50.0	150.0
d5EtFOSAA		106.0	50.0	150.0
MHFPO-DA		89.1	50.0	150.0
d-N-EtFOSA-M		88.4	50.0	150.0
d-N-MeFOSA-M		110.4	50.0	150.0
d7-N-MeFOSE-M		100.9	50.0	150.0
d9-N-EtFOSE-M		97.4	50.0	150.0

QC Report - Internal Standards per QC Sample

Laboratory Control Sample Duplicate (LCSD)

Lab Sample ID: SE250321W1.LCSD250321, Parent Sample ID: SE250321W1.LCS250321

Run in Batch: SE250321W1, Run Date: 03/21/2025 12:38, Prep Date: 03/21/2025, Matrix: WW, Dilution: 1

Internal Standard	Flags	%Rec	LCL	UCL
M2-4:2FTSA		98.8	50.0	150.0
M2-6:2FTSA		102.9	50.0	150.0
M2-8:2FTSA		86.6	50.0	150.0
M2PFTeDA		92.3	12.0	218.0
M3PFBS		102.8	50.0	150.0
M3PFHxS		100.0	50.0	150.0
M4PFHpA		95.7	50.0	150.0
M5PFHxA		106.6	50.0	150.0
M5PFPeA		99.3	50.0	150.0
M6PFDA		96.8	50.0	150.0
M7PFUnDA		104.1	50.0	150.0
M8FOSA		93.7	50.0	150.0
M8PFOA		100.7	50.0	150.0
M8PFOS		96.0	50.0	150.0
M9-PFNA		104.1	50.0	150.0
MPFBA		96.4	50.0	150.0
MPFDoDA		104.0	50.0	150.0
d3N-MeFOSAA		89.1	50.0	150.0
d5EtFOSAA		106.0	50.0	150.0
MHFPO-DA		89.1	50.0	150.0

QC Report - Internal Standards per QC Sample

Matrix Spike (MS)

Lab Sample ID: SE250321W1.7261404M, Parent Sample ID: S72614.04

Run in Batch: SE250321W1, Run Date: 03/21/2025 15:58, Prep Date: 03/21/2025, Matrix: WW, Dilution: 1.98

Internal Standard	Flags	%Rec	LCL	UCL
M2-4:2FTSA		118.4	50.0	150.0
M2-6:2FTSA		113.8	50.0	150.0
M2-8:2FTSA		101.2	50.0	150.0
M2PFTeDA		124.1	12.0	218.0
M3PFBS		123.5	50.0	150.0
M3PFHxS		123.5	50.0	150.0
M4PFHpA		117.6	50.0	150.0
M5PFHxA		120.7	50.0	150.0
M5PFPeA		120.7	50.0	150.0
M6PFDA		128.6	50.0	150.0
M7PFUnDA		119.4	50.0	150.0
M8FOSA		112.3	50.0	150.0
M8PFOA		116.9	50.0	150.0
M8PFOS		112.3	50.0	150.0
M9-PFNA		119.3	50.0	150.0
MPFBA		126.3	50.0	150.0
MPFDoDA		120.9	50.0	150.0
d3N-MeFOSAA		114.7	50.0	150.0
d5EtFOSAA		127.7	50.0	150.0
MHFPO-DA		102.6	50.0	150.0

QC Report - Internal Standards per QC Sample

Duplicate (DUP)

Lab Sample ID: SE250321W1.7261406D, Parent Sample ID: S72614.06

Run in Batch: SE250321W1, Run Date: 03/21/2025 16:58, Prep Date: 03/21/2025, Matrix: WW, Dilution: 2.04

Internal Standard	Flags	%Rec	LCL	UCL
M2-4:2FTSA		120.0	50.0	150.0
M2-6:2FTSA		110.2	50.0	150.0
M2-8:2FTSA		113.6	50.0	150.0
M2PFTeDA		155.3	12.0	218.0
M3PFBS		119.2	50.0	150.0
M3PFHxS		115.7	50.0	150.0
M4PFHpA		106.8	50.0	150.0
M5PFHxA		120.9	50.0	150.0
M5PFPeA		118.8	50.0	150.0
M6PFDA		123.6	50.0	150.0
M7PFUnDA		119.2	50.0	150.0
M8FOSA		112.4	50.0	150.0
M8PFOA		116.9	50.0	150.0
M8PFOS		108.1	50.0	150.0
M9-PFNA		115.8	50.0	150.0
MPFBA		121.5	50.0	150.0
MPFDoDA		131.1	50.0	150.0
d3N-MeFOSAA		114.5	50.0	150.0
d5EtFOSAA		126.3	50.0	150.0
MHFPO-DA		107.2	50.0	150.0

QC Report - Batch QC Results

Organics - Volatiles, Prep Batch ID: PF250321W1

Surrogates: Yes, QC Types: BLK/LCS/LCSD/MS/DUP

Blank (BLK)

Lab Sample ID: SE250321TOP.BLK250321

Run in Batch: SE250321TOP, Run Date: 03/21/2025 12:58, Prep Date: 03/21/2025, Matrix: WW, Dilution: 1

Analyte	Flags	Conc	RDL	Units
PFBA		ND	10	ng/l
PFMPA		ND	2	ng/l
FPrPA (3:3 FTCA)		ND	10	ng/l
PFPeA		ND	4	ng/l
PFPPrS		ND	2	ng/l
PFMBA		ND	2	ng/l
4:2 FTSA		ND	2	ng/l
NFDHA		ND	2	ng/l
PFHxA		ND	2	ng/l
PFBS		ND	2	ng/l
HFPO-DA		ND	10	ng/l
FPePA (5:3 FTCA)		ND	10	ng/l
PFEESA		ND	2	ng/l
PFHpA		ND	2	ng/l
ADONA		ND	2	ng/l
PFPeS		ND	2	ng/l
6:2 FTSA		ND	2	ng/l
PFBSA		ND	2	ng/l
PFOA		ND	2	ng/l
PFHxS-BR		ND	2	ng/l
PFHxS		ND	2	ng/l
PFHxS-LN		ND	2	ng/l
FHpPA (7:3 FTCA)		ND	10	ng/l
PFNA		ND	2	ng/l
8:2 FTSA		ND	2	ng/l
PFECHS		ND	2	ng/l
PFHpS		ND	2	ng/l
N-MeFOSAA		ND	2	ng/l
PFDA		ND	2	ng/l
EtFOSAA		ND	4	ng/l
PFOS-BR		ND	2	ng/l
PFOS		ND	2	ng/l
PFOS-LN		ND	2	ng/l
PFHxSA		ND	2	ng/l
PFUnDA		ND	2	ng/l
9CL-PF3ONS		ND	2	ng/l
PFNS		ND	2	ng/l
PFDoDA		ND	2	ng/l
PFDS		ND	2	ng/l
PFTTrDA		ND	2	ng/l
FOSA		ND	2	ng/l
11CL-PF3OUdS		ND	2	ng/l
PFTeDA		ND	4	ng/l
PFDOS		ND	6	ng/l
NMeFOSE		ND	4	ng/l
NMeFOSAM		ND	2	ng/l

QC Report - Batch QC Results

Organics - Volatiles, Prep Batch ID: PF250321W1 (continued)

Surrogates: Yes, QC Types: BLK/LCS/LCSD/MS/DUP

Blank (BLK) (continued)

Lab Sample ID: SE250321TOP.BLK250321

Run in Batch: SE250321TOP, Run Date: 03/21/2025 12:58, Prep Date: 03/21/2025, Matrix: WW, Dilution: 1

Analyte	Flags	Conc	RDL	Units
NEtFOSE		ND	4	ng/l
NEtFOSAM		ND	2	ng/l

Blank (BLK)

Lab Sample ID: SE250321W1.BLK250321

Run in Batch: SE250321W1, Run Date: 03/21/2025 12:58, Prep Date: 03/21/2025, Matrix: WW, Dilution: 1

Analyte	Flags	Conc	RDL	Units
PFBA		ND	10	ng/l
PFMPA		ND	2	ng/l
FPrPA (3:3 FTCA)		ND	10	ng/l
PFPeA		ND	4	ng/l
PFPPrS		ND	2	ng/l
PFMBA		ND	2	ng/l
4:2 FTSA		ND	2	ng/l
NFDHA		ND	2	ng/l
PFHxA		ND	2	ng/l
PFBS		ND	2	ng/l
HFPO-DA		ND	10	ng/l
FPePA (5:3 FTCA)		ND	10	ng/l
PFEESA		ND	2	ng/l
PFHpA		ND	2	ng/l
ADONA		ND	2	ng/l
PFPeS		ND	2	ng/l
6:2 FTSA		ND	2	ng/l
PFBSA		ND	2	ng/l
PFOA		ND	2	ng/l
PFHxS-BR		ND	2	ng/l
PFHxS		ND	2	ng/l
PFHxS-LN		ND	2	ng/l
FHpPA (7:3 FTCA)		ND	10	ng/l
PFNA		ND	2	ng/l
8:2 FTSA		ND	2	ng/l
PFECHS		ND	2	ng/l
PFHpS		ND	2	ng/l
N-MeFOSAA		ND	2	ng/l
PFDA		ND	2	ng/l
EtFOSAA		ND	4	ng/l
PFOS-BR		ND	2	ng/l
PFOS		ND	2	ng/l
PFOS-LN		ND	2	ng/l
PFHxSA		ND	2	ng/l
PFUnDA		ND	2	ng/l
9CL-PF3ONS		ND	2	ng/l
PFNS		ND	2	ng/l
PFDoDA		ND	2	ng/l
PFDS		ND	2	ng/l

QC Report - Batch QC Results

Organics - Volatiles, Prep Batch ID: PF250321W1 (continued)

Surrogates: Yes, QC Types: BLK/LCS/LCSD/MS/DUP

Blank (BLK) (continued)

Lab Sample ID: SE250321W1.BLK250321

Run in Batch: SE250321W1, Run Date: 03/21/2025 12:58, Prep Date: 03/21/2025, Matrix: WW, Dilution: 1

Analyte	Flags	Conc	RDL	Units
PFTTrDA		ND	2	ng/l
FOSA		ND	2	ng/l
11CL-PF3OUdS		ND	2	ng/l
PFTTeDA		ND	4	ng/l

Laboratory Control Sample (LCS)

Lab Sample ID: SE250321TOP.LCS250321

Run in Batch: SE250321TOP, Run Date: 03/21/2025 12:18, Prep Date: 03/21/2025, Matrix: WW, Dilution: 1

Analyte	Flags	% Rec	LCL	UCL
PFBA		103.6	70.0	130.0
PFMPA		97.8	70.0	130.0
FPrPA (3:3 FTCA)		112.8	70.0	130.0
PFPeA		105.8	70.0	130.0
PFPPrS		85.0	70.0	130.0
PFMBA		94.0	70.0	130.0
4:2 FTSA		99.2	70.0	130.0
NFDHA		99.4	70.0	130.0
PFHxA		115.2	70.0	130.0
PFBS		111.0	70.0	130.0
HFPO-DA		100.4	70.0	130.0
FPePA (5:3 FTCA)	*	134.6	70.0	130.0
PFEESA		105.2	70.0	130.0
PFHpA		108.0	70.0	130.0
ADONA		97.4	70.0	130.0
PFPeS		101.0	70.0	130.0
6:2 FTSA		100.4	70.0	130.0
PFBSA		107.0	70.0	130.0
PFOA		104.6	70.0	130.0
PFHxS		106.8	70.0	130.0
FHpPA (7:3 FTCA)		108.6	70.0	130.0
PFNA		105.6	70.0	130.0
8:2 FTSA		100.0	70.0	130.0
PFECHS		108.6	70.0	130.0
PFHpS		117.4	70.0	130.0
N-MeFOSAA		126.0	70.0	130.0
PFDA		106.8	70.0	130.0
EtFOSAA		101.8	70.0	130.0
PFOS		107.2	70.0	130.0
PFHxSA		107.2	70.0	130.0
PFUnDA		113.0	70.0	130.0
9CL-PF3ONS		103.6	70.0	130.0
PFNS		92.6	70.0	130.0
PFDoDA		106.2	70.0	130.0
PFDS		101.2	70.0	130.0
PFTTrDA		106.2	70.0	130.0
FOSA		105.8	70.0	130.0

QC Report - Batch QC Results

Organics - Volatiles, Prep Batch ID: PF250321W1 (continued)

Surrogates: Yes, QC Types: BLK/LCS/LCSD/MS/DUP

Laboratory Control Sample (LCS) (continued)

Lab Sample ID: SE250321TOP.LCS250321

Run in Batch: SE250321TOP, Run Date: 03/21/2025 12:18, Prep Date: 03/21/2025, Matrix: WW, Dilution: 1

Analyte	Flags	% Rec	LCL	UCL
11CL-PF3OUdS		91.0	70.0	130.0
PFTeDA		116.0	70.0	130.0
PFDOS		110.0	70.0	130.0
NMeFOSE		100.2	70.0	130.0
NMeFOSAM		119.6	70.0	130.0
NEtFOSE		111.2	70.0	130.0
NEtFOSAM		115.6	70.0	130.0

Laboratory Control Sample (LCS)

Lab Sample ID: SE250321W1.LCS250321

Run in Batch: SE250321W1, Run Date: 03/21/2025 12:18, Prep Date: 03/21/2025, Matrix: WW, Dilution: 1

Analyte	Flags	% Rec	LCL	UCL
PFBA		103.6	70.0	130.0
PFMPA		97.8	70.0	130.0
FPrPA (3:3 FTCA)		112.8	70.0	130.0
PFPeA		105.8	70.0	130.0
PFPPrS		85.0	70.0	130.0
PFMBA		94.0	70.0	130.0
4:2 FTSA		99.2	70.0	130.0
NFDHA		99.4	70.0	130.0
PFHxA		115.2	70.0	130.0
PFBS		111.0	70.0	130.0
HFPO-DA		100.4	70.0	130.0
FPePA (5:3 FTCA)	*	134.6	70.0	130.0
PFEESA		105.2	70.0	130.0
PFHpA		108.0	70.0	130.0
ADONA		97.4	70.0	130.0
PFPeS		101.0	70.0	130.0
6:2 FTSA		100.4	70.0	130.0
PFBSA		107.0	70.0	130.0
PFOA		104.8	70.0	130.0
PFHxS		106.8	70.0	130.0
FHpPA (7:3 FTCA)		108.6	70.0	130.0
PFNA		105.0	70.0	130.0
8:2 FTSA		100.0	70.0	130.0
PFECHS		108.6	70.0	130.0
PFHpS		117.4	70.0	130.0
N-MeFOSAA		126.0	70.0	130.0
PFDA		106.8	70.0	130.0
EtFOSAA		101.8	70.0	130.0
PFOS		107.2	70.0	130.0
PFHxSA		107.2	70.0	130.0
PFUnDA		113.0	70.0	130.0
9CL-PF3ONS		103.6	70.0	130.0
PFNS		92.6	70.0	130.0
PFDODA		106.2	70.0	130.0

QC Report - Batch QC Results

Organics - Volatiles, Prep Batch ID: PF250321W1 (continued)

Surrogates: Yes, QC Types: BLK/LCS/LCSD/MS/DUP

Laboratory Control Sample (LCS) (continued)

Lab Sample ID: SE250321W1.LCS250321

Run in Batch: SE250321W1, Run Date: 03/21/2025 12:18, Prep Date: 03/21/2025, Matrix: WW, Dilution: 1

Analyte	Flags	% Rec	LCL	UCL
PFDS		101.2	70.0	130.0
PFTTrDA		106.2	70.0	130.0
FOSA		106.8	70.0	130.0
11CL-PF3OUdS		91.0	70.0	130.0
PFTeDA		116.0	70.0	130.0

Laboratory Control Sample Duplicate (LCSD)

Lab Sample ID: SE250321TOP.LCSD250321, Parent Sample ID: SE250321TOP.LCS250321

Run in Batch: SE250321TOP, Run Date: 03/21/2025 12:38, Prep Date: 03/21/2025, Matrix: WW, Dilution: 1

Analyte	Flags	% Rec	LCL	UCL	RPD	RPD CL
PFBA		97.2	70.0	130.0	6.4	30.0
PFMPA		88.0	70.0	130.0	10.5	30.0
FPrPA (3:3 FTCA)		112.6	70.0	130.0	0.2	30.0
PFPeA		102.8	70.0	130.0	2.9	30.0
PFPPrS		79.0	70.0	130.0	7.3	30.0
PFMBA		87.6	70.0	130.0	7.0	30.0
4:2 FTSA		86.2	70.0	130.0	14.0	30.0
NFDHA		89.8	70.0	130.0	10.1	30.0
PFHxA		103.6	70.0	130.0	10.6	30.0
PFBS		98.6	70.0	130.0	11.8	30.0
HFPO-DA		103.4	70.0	130.0	2.9	30.0
FPePA (5:3 FTCA)		105.4	70.0	130.0	24.3	30.0
PFEESA		93.4	70.0	130.0	11.9	30.0
PFHpA		101.2	70.0	130.0	6.5	30.0
ADONA		92.8	70.0	130.0	4.8	30.0
PFPeS		92.2	70.0	130.0	9.1	30.0
6:2 FTSA		85.0	70.0	130.0	16.6	30.0
PFBSA		101.2	70.0	130.0	5.6	30.0
PFOA		103.0	70.0	130.0	1.5	30.0
PFHxS		95.2	70.0	130.0	11.5	30.0
FHpPA (7:3 FTCA)		112.2	70.0	130.0	3.3	30.0
PFNA		93.2	70.0	130.0	12.5	30.0
8:2 FTSA		105.2	70.0	130.0	5.1	30.0
PFECHS		103.0	70.0	130.0	5.3	30.0
PFHpS		107.2	70.0	130.0	9.1	30.0
N-MeFOSAA		116.2	70.0	130.0	8.1	30.0
PFDA		108.0	70.0	130.0	1.1	30.0
EtFOSAA		91.8	70.0	130.0	10.3	30.0
PFOS		102.2	70.0	130.0	4.8	30.0
PFHxSA		104.2	70.0	130.0	2.8	30.0
PFUnDA		95.0	70.0	130.0	17.3	30.0
9CL-PF3ONS		88.8	70.0	130.0	15.4	30.0
PFNS		90.2	70.0	130.0	2.6	30.0
PFDODA		98.4	70.0	130.0	7.6	30.0
PFDS		96.4	70.0	130.0	4.9	30.0
PFTTrDA		92.6	70.0	130.0	13.7	30.0

QC Report - Batch QC Results

Organics - Volatiles, Prep Batch ID: PF250321W1 (continued)

Surrogates: Yes, QC Types: BLK/LCS/LCSD/MS/DUP

Laboratory Control Sample Duplicate (LCSD) (continued)

Lab Sample ID: SE250321TOP.LCSD250321, Parent Sample ID: SE250321TOP.LCS250321

Run in Batch: SE250321TOP, Run Date: 03/21/2025 12:38, Prep Date: 03/21/2025, Matrix: WW, Dilution: 1

Analyte	Flags	% Rec	LCL	UCL	RPD	RPD CL
FOSA		98.2	70.0	130.0	7.5	30.0
11CL-PF3OUdS		86.2	70.0	130.0	5.4	30.0
PFTeDA		114.2	70.0	130.0	1.6	30.0
PFDOS		105.2	70.0	130.0	4.5	30.0
NMeFOSE		99.4	70.0	130.0	0.8	30.0
NMeFOSAM		97.0	70.0	130.0	20.9	30.0
NEtFOSE		114.8	70.0	130.0	3.2	30.0
NEtFOSAM		108.8	70.0	130.0	6.1	30.0

Laboratory Control Sample Duplicate (LCSD)

Lab Sample ID: SE250321W1.LCSD250321, Parent Sample ID: SE250321W1.LCS250321

Run in Batch: SE250321W1, Run Date: 03/21/2025 12:38, Prep Date: 03/21/2025, Matrix: WW, Dilution: 1

Analyte	Flags	% Rec	LCL	UCL	RPD	RPD CL
PFBA		97.2	70.0	130.0	6.4	30.0
PFMPA		88.0	70.0	130.0	10.5	30.0
FPrPA (3:3 FTCA)		112.6	70.0	130.0	0.2	30.0
PFPeA		102.8	70.0	130.0	2.9	30.0
PFPPrS		79.0	70.0	130.0	7.3	30.0
PFMBA		87.6	70.0	130.0	7.0	30.0
4:2 FTSA		86.2	70.0	130.0	14.0	30.0
NFDHA		89.8	70.0	130.0	10.1	30.0
PFHxA		103.6	70.0	130.0	10.6	30.0
PFBS		98.6	70.0	130.0	11.8	30.0
HFPO-DA		103.4	70.0	130.0	2.9	30.0
FPePA (5:3 FTCA)		105.4	70.0	130.0	24.3	30.0
PFEESA		93.4	70.0	130.0	11.9	30.0
PFHpA		101.2	70.0	130.0	6.5	30.0
ADONA		92.8	70.0	130.0	4.8	30.0
PFPeS		92.2	70.0	130.0	9.1	30.0
6:2 FTSA		85.0	70.0	130.0	16.6	30.0
PFBSA		101.2	70.0	130.0	5.6	30.0
PFOA		102.4	70.0	130.0	2.3	30.0
PFHxS		95.2	70.0	130.0	11.5	30.0
FHpPA (7:3 FTCA)		112.2	70.0	130.0	3.3	30.0
PFNA		92.2	70.0	130.0	13.0	30.0
8:2 FTSA		105.2	70.0	130.0	5.1	30.0
PFECHS		103.0	70.0	130.0	5.3	30.0
PFHpS		107.2	70.0	130.0	9.1	30.0
N-MeFOSAA		116.2	70.0	130.0	8.1	30.0
PFDA		108.0	70.0	130.0	1.1	30.0
EtFOSAA		91.8	70.0	130.0	10.3	30.0
PFOS		102.2	70.0	130.0	4.8	30.0
PFHxSA		104.2	70.0	130.0	2.8	30.0
PFUnDA		95.0	70.0	130.0	17.3	30.0
9CL-PF3ONS		88.8	70.0	130.0	15.4	30.0
PFNS		90.2	70.0	130.0	2.6	30.0

QC Report - Batch QC Results

Organics - Volatiles, Prep Batch ID: PF250321W1 (continued)

Surrogates: Yes, QC Types: BLK/LCS/LCSD/MS/DUP

Laboratory Control Sample Duplicate (LCSD) (continued)

Lab Sample ID: SE250321W1.LCSD250321, Parent Sample ID: SE250321W1.LCS250321

Run in Batch: SE250321W1, Run Date: 03/21/2025 12:38, Prep Date: 03/21/2025, Matrix: WW, Dilution: 1

Analyte	Flags	% Rec	LCL	UCL	RPD	RPD CL
PFDoDA		98.4	70.0	130.0	7.6	30.0
PFDS		96.4	70.0	130.0	4.9	30.0
PFTTrDA		92.6	70.0	130.0	13.7	30.0
FOSA		98.2	70.0	130.0	8.4	30.0
11CL-PF3OUdS		86.2	70.0	130.0	5.4	30.0
PFTeDA		114.2	70.0	130.0	1.6	30.0

Matrix Spike (MS)

Lab Sample ID: SE250321W1.7261404M, Parent Sample ID: S72614.04

Run in Batch: SE250321W1, Run Date: 03/21/2025 15:58, Prep Date: 03/21/2025, Matrix: WW, Dilution: 1.98

Analyte	Flags	% Rec	LCL	UCL
PFBA		101.0	70.0	130.0
PFPeA		96.0	70.0	130.0
4:2 FTSA		87.9	70.0	130.0
PFHxA		107.9	70.0	130.0
PFBS		90.6	70.0	130.0
PFHpA		93.6	70.0	130.0
PFPeS		90.6	70.0	130.0
6:2 FTSA		81.8	70.0	130.0
PFOA		96.3	70.0	130.0
PFHxS		90.4	70.0	130.0
PFNA		93.9	70.0	130.0
8:2 FTSA		83.8	70.0	130.0
PFHpS		94.9	70.0	130.0
PFDA		88.1	70.0	130.0
N-MeFOSAA		97.0	70.0	130.0
EtFOSAA		85.9	70.0	130.0
PFOS		80.8	70.0	130.0
PFUnDA		97.0	70.0	130.0
PFNS		82.8	70.0	130.0
PFDoDA		90.9	70.0	130.0
PFDS		84.8	70.0	130.0
PFTTrDA		90.9	70.0	130.0
FOSA		94.9	70.0	130.0
PFTeDA		93.9	70.0	130.0
11CL-PF3OUdS		77.8	70.0	130.0
9CL-PF3ONS		87.9	70.0	130.0
ADONA		90.9	70.0	130.0
HFPO-DA		101.0	70.0	130.0
FHpPA (7:3 FTCA)		96.0	70.0	130.0
FPePA (5:3 FTCA)		111.1	70.0	130.0
FPrPA (3:3 FTCA)		101.0	70.0	130.0
PFBSA		92.9	70.0	130.0
PFECHS		102.0	70.0	130.0
PFHxSA		97.0	70.0	130.0

QC Report - Batch QC Results

Organics - Volatiles, Prep Batch ID: PF250321W1 (continued)

Surrogates: Yes, QC Types: BLK/LCS/LCSD/MS/DUP

Duplicate (DUP)

Lab Sample ID: SE250321W1.7261406D, Parent Sample ID: S72614.06

Run in Batch: SE250321W1, Run Date: 03/21/2025 16:58, Prep Date: 03/21/2025, Matrix: WW, Dilution: 2.04

Analyte	Flags	RPD	RPD CL
PFBA		NC	30.0
PFPeA		NC	30.0
4:2 FTSA		NC	30.0
PFHxA		NC	30.0
PFBS		NC	30.0
PFFHpA		NC	30.0
PFPeS		NC	30.0
6:2 FTSA		NC	30.0
PFOA		NC	30.0
PFHxS		NC	30.0
PFHxS-LN		NC	30.0
PFHxS-BR		NC	30.0
PFNA		NC	30.0
8:2 FTSA		NC	30.0
PFFHpS		NC	30.0
PFDA		NC	30.0
N-MeFOSAA		NC	30.0
EtFOSAA		NC	30.0
PFOS		9.7	30.0
PFOS-LN		14.5	30.0
PFOS-BR		10.9	30.0
PFUnDA		NC	30.0
PFNS		NC	30.0
PFDoDA		NC	30.0
PFDS		NC	30.0
PFTTrDA		NC	30.0
FOSA		NC	30.0
PFTeDA		NC	30.0
11CL-PF3OUdS		NC	30.0
9CL-PF3ONS		NC	30.0
ADONA		NC	30.0
HFPO-DA		NC	30.0
FHpPA (7:3 FTCA)		NC	30.0
FPePA (5:3 FTCA)		NC	30.0
FPrPA (3:3 FTCA)		NC	30.0
PFBSA		NC	30.0
PFECHS	J	9.5	30.0
PFHxSA		NC	30.0

