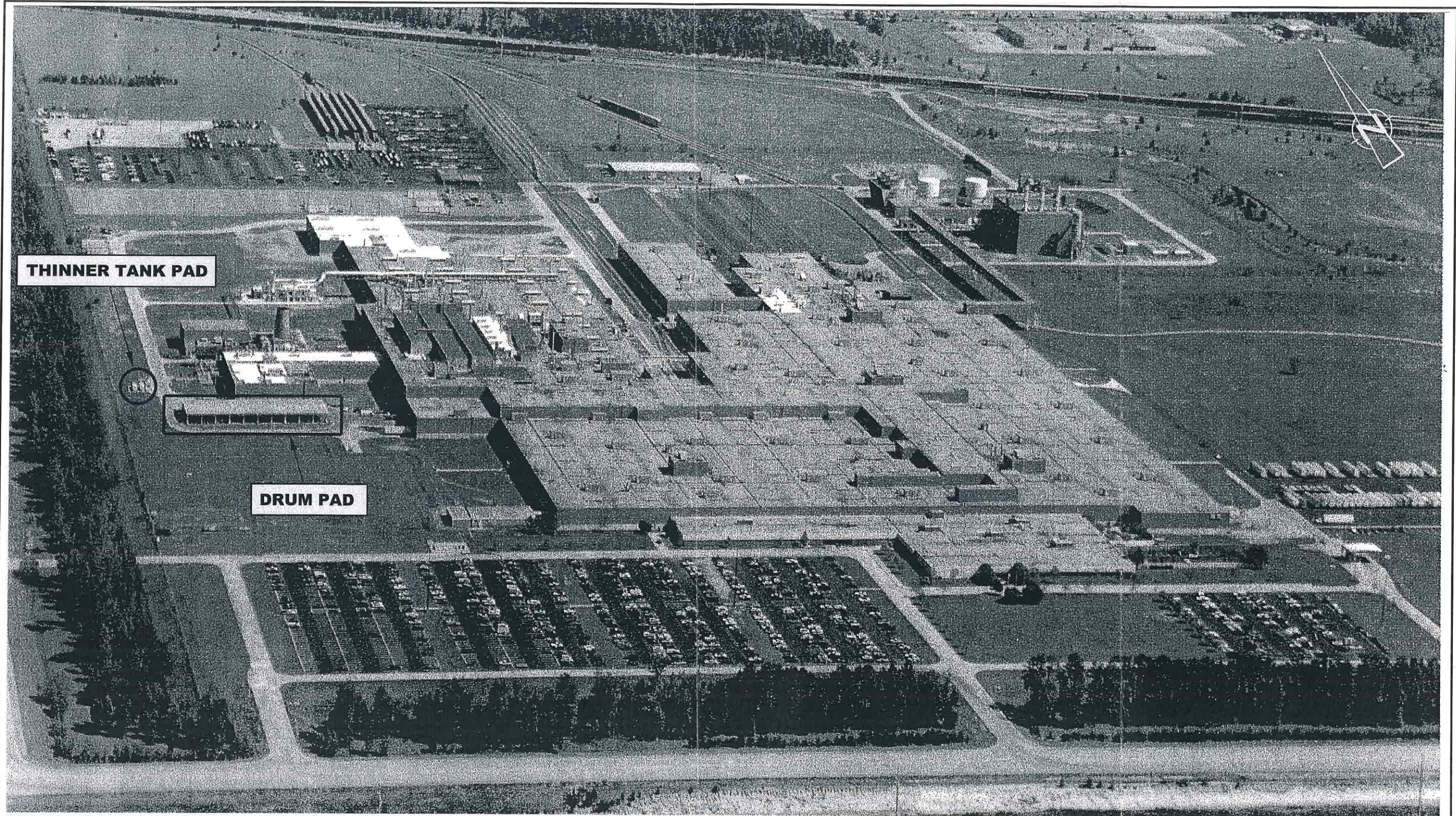


RE: BASE MAP TAKEN FROM USGS 7.5 MINUTE TOPOGRAPHIC MAP, "GREENWOOD, LA".



Figure 1  
**VICINITY MAP**  
**SHREVEPORT TRUCK ASSEMBLY PLANT**  
**CADDO PARISH, LOUISIANA**  
**GENERAL MOTORS CORPORATION, SHREVEPORT, LOUISIANA**



RE: AERIAL PHOTOGRAPH PROVIDED BY CLIENT.

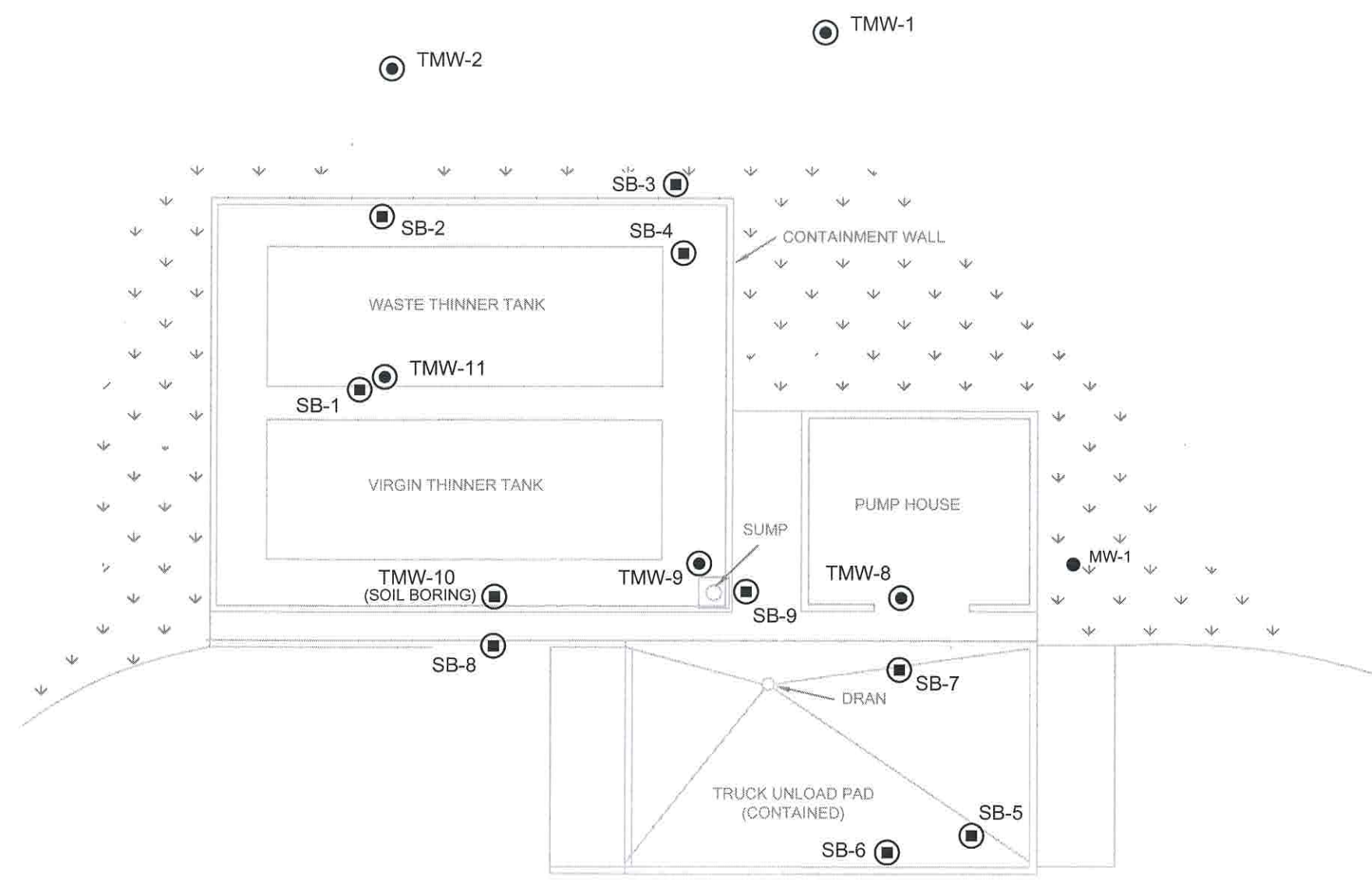
NOT TO SCALE

Figure 2

FACILITY MAP  
SHREVEPORT TRUCK ASSEMBLY PLANT  
CADDO PARISH, LOUISIANA

*GENERAL MOTORS CORPORATION, SHREVEPORT, LOUISIANA*





**LEGEND**

- SB-5 SOIL BORING SAMPLE LOCATION
- TMW-1 SOIL BORING/TEMPORARY MONITOR WELL SAMPLE LOCATION
- MW-1 MONITOR WELL LOCATION

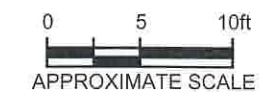
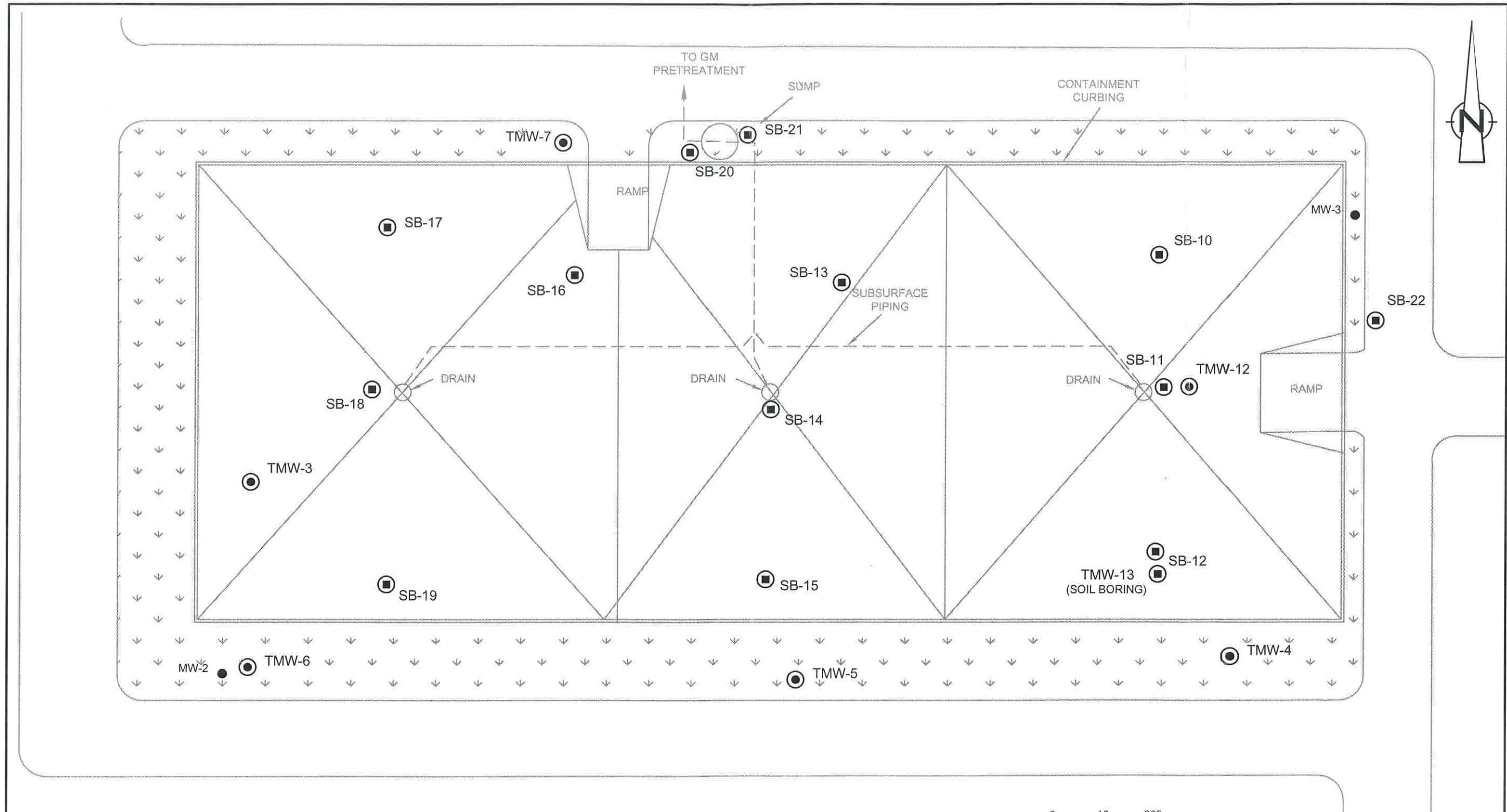


Figure 3  
 SITE PLAN WITH SAMPLE LOCATIONS-THINNER TANK PAD  
 SHREVEPORT TRUCK ASSEMBLY PLANT  
 CADDO PARISH, LOUISIANA  
 GENERAL MOTORS CORPORATION, SHREVEPORT, LOUISIANA



RE: C-K ASSOCIATES, INC. FIGURE, 840-0142-08,  
 "SOLVENT TANK MANAGEMENT PAD SAMPLE LOCATIONS",  
 DATED JULY 30, 2001.



**LEGEND**

- SB-10 SOIL BORING SAMPLE LOCATION
- TMW-4 SOIL BORING/TEMPORARY MONITOR WELL SAMPLE LOCATION
- MW-1 MONITOR WELL LOCATION

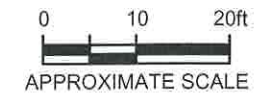


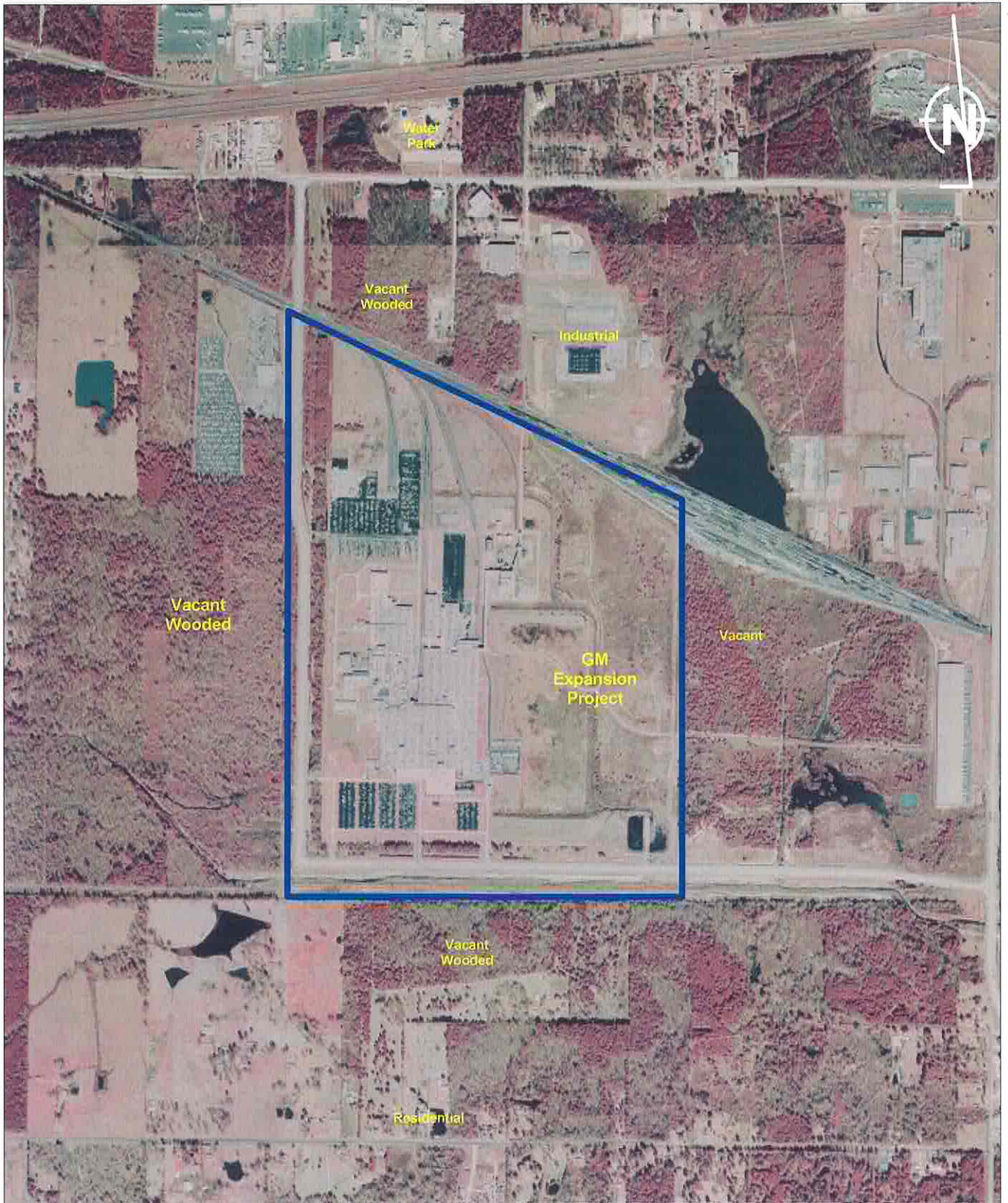
Figure 4

SITE PLAN WITH SAMPLE LOCATIONS-DRUM PAD  
 SHREVEPORT TRUCK ASSEMBLY PLANT  
 SHREVEPORT, LOUISIANA

*GENERAL MOTORS CORPORATION, SHREVEPORT, LOUISIANA*



RE: C-K ASSOCIATES, INC. FIGURE, 840-0142-07,  
 "DRUM WASTE MANAGEMENT PAD", DATED JULY 30, 2001.

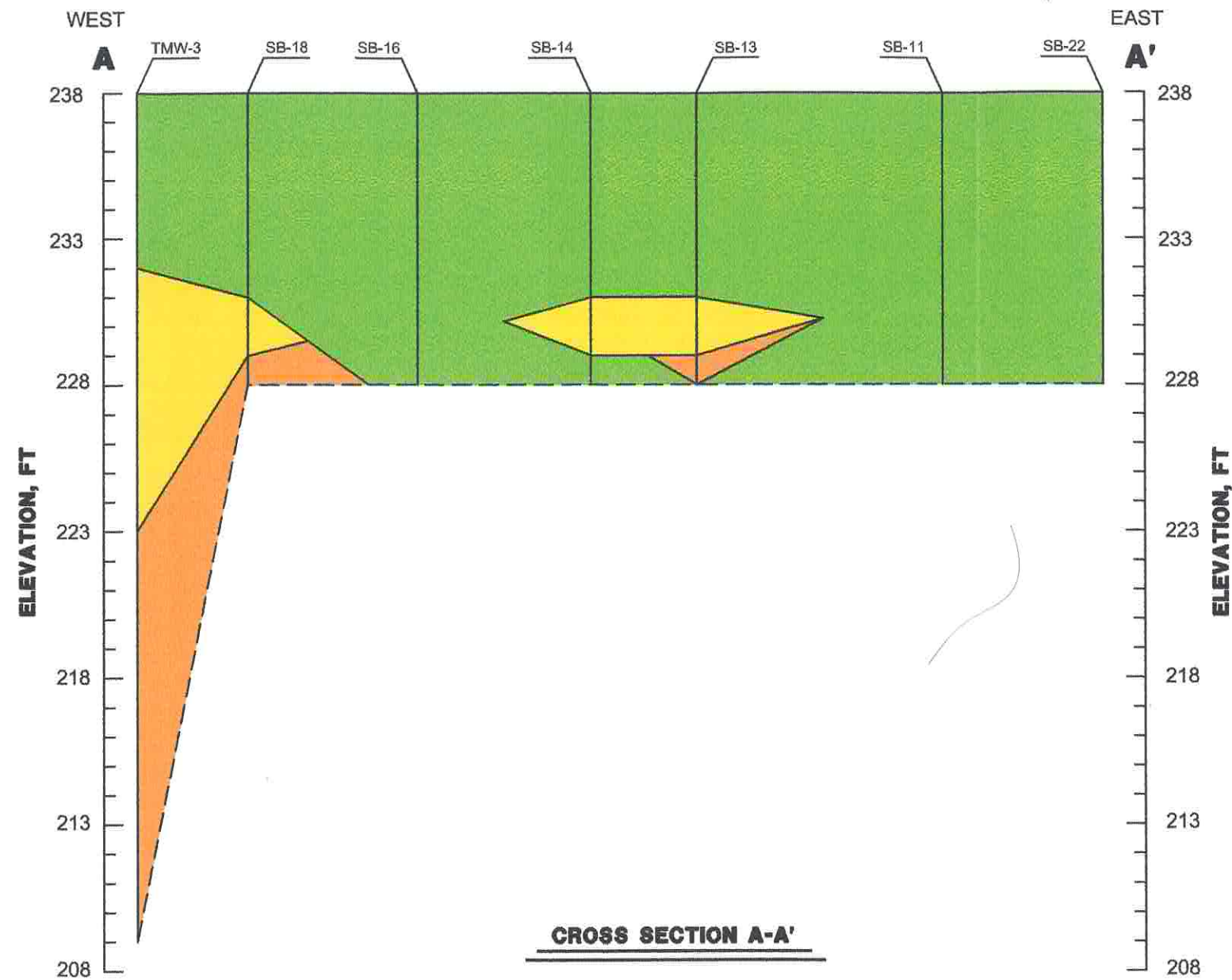


RE: 1998 COLOR INFRARED AERIAL PHOTOGRAPH FROM LOSCO.

1500 0 1500 Feet

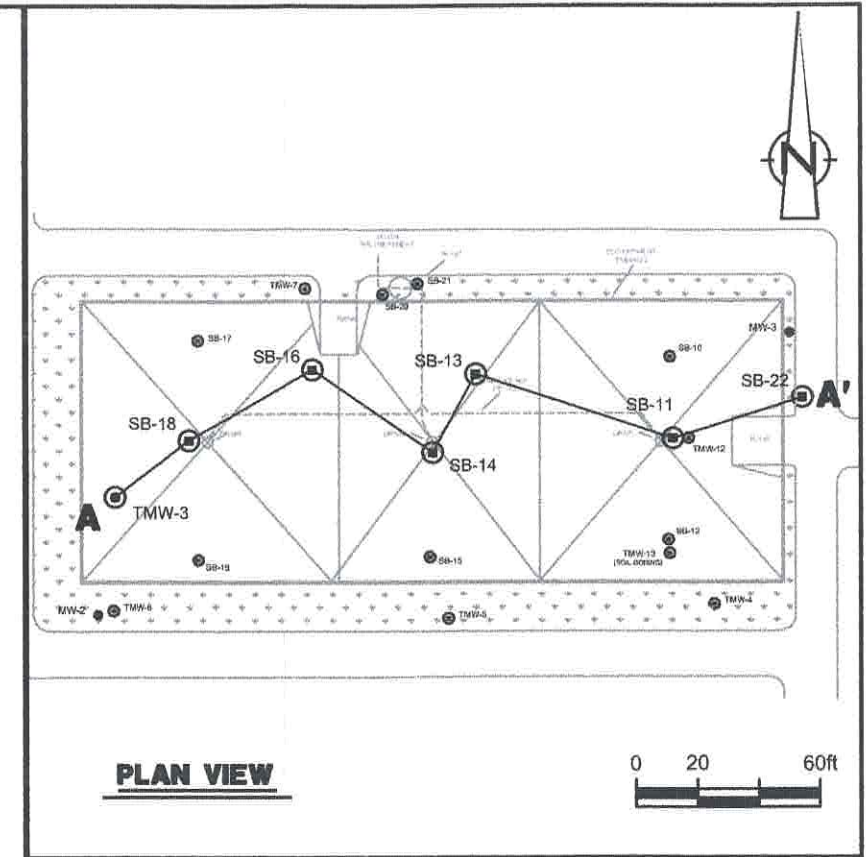
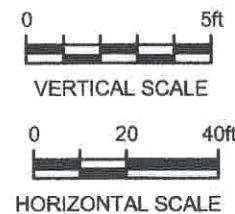


Figure 5  
**SURROUNDING LAND USE MAP**  
**SHREVEPORT TRUCK ASSEMBLY PLANT**  
**CADDO PARISH, LOUISIANA**  
**GENERAL MOTORS CORPORATION, SHREVEPORT, LOUISIANA**



**CROSS SECTION A-A'**

NOTES: 1.) SOIL STRATIFICATION IS SIMPLIFIED AND INFERRED BETWEEN BOREHOLES. ACTUAL CONDITIONS MAY VARY.  
 2.) REFER TO INDIVIDUAL BORING LOGS FOR DETAILS.



**PLAN VIEW**

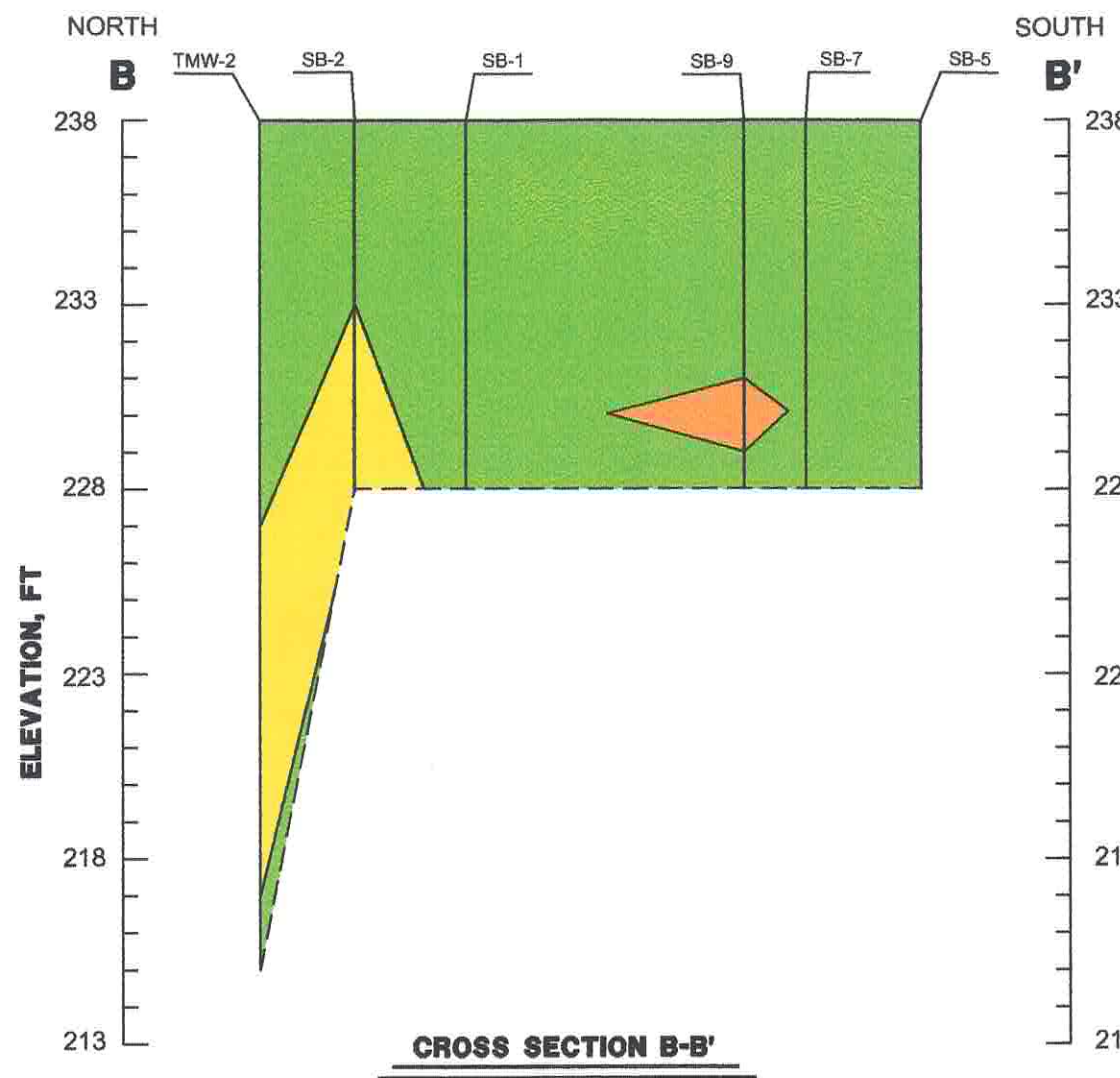
- LEGEND**
- SB-10 (●) SOIL BORING SAMPLE LOCATION
  - TMW-3 (●) SOIL BORING/TEMPORARY MONITOR WELL SAMPLE LOCATION
  - (Orange box) CLAYEY SAND (SC)
  - (Yellow box) CLAYEY SILT (ML)
  - (Green box) CLAY TO SILTY CLAY (CH-CL)

**Figure 6A**

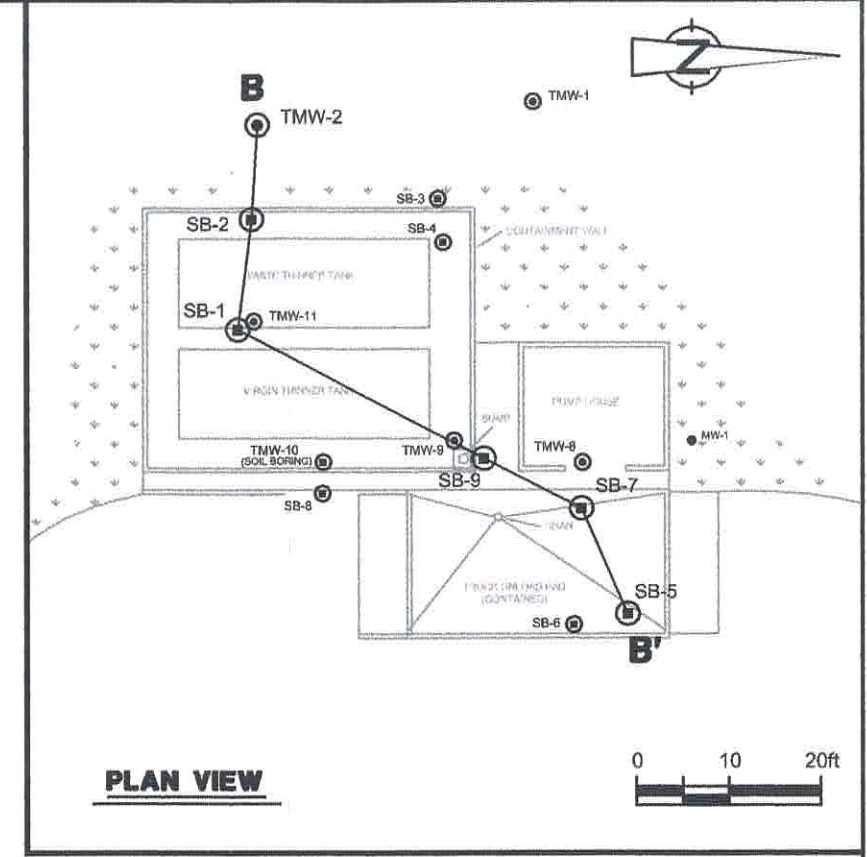
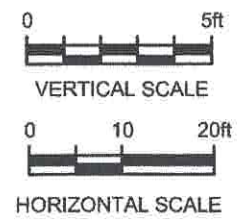
**SOIL PROFILE CROSS SECTION A-A'**  
**SHREVEPORT TRUCK ASSEMBLY PLANT**  
**SHREVEPORT, LOUISIANA**  
**GENERAL MOTORS CORPORATION, SHREVEPORT, LOUISIANA**

RE: C-K ASSOCIATES, INC. FIGURE, 840-0142-07,  
 "DRUM WASTE MANAGEMENT PAD", DATED JULY 30, 2001.





NOTES: 1.) SOIL STRATIFICATION IS SIMPLIFIED AND INFERRED BETWEEN BOREHOLES. ACTUAL CONDITIONS MAY VARY.  
 2.) REFER TO INDIVIDUAL BORING LOGS FOR DETAILS.

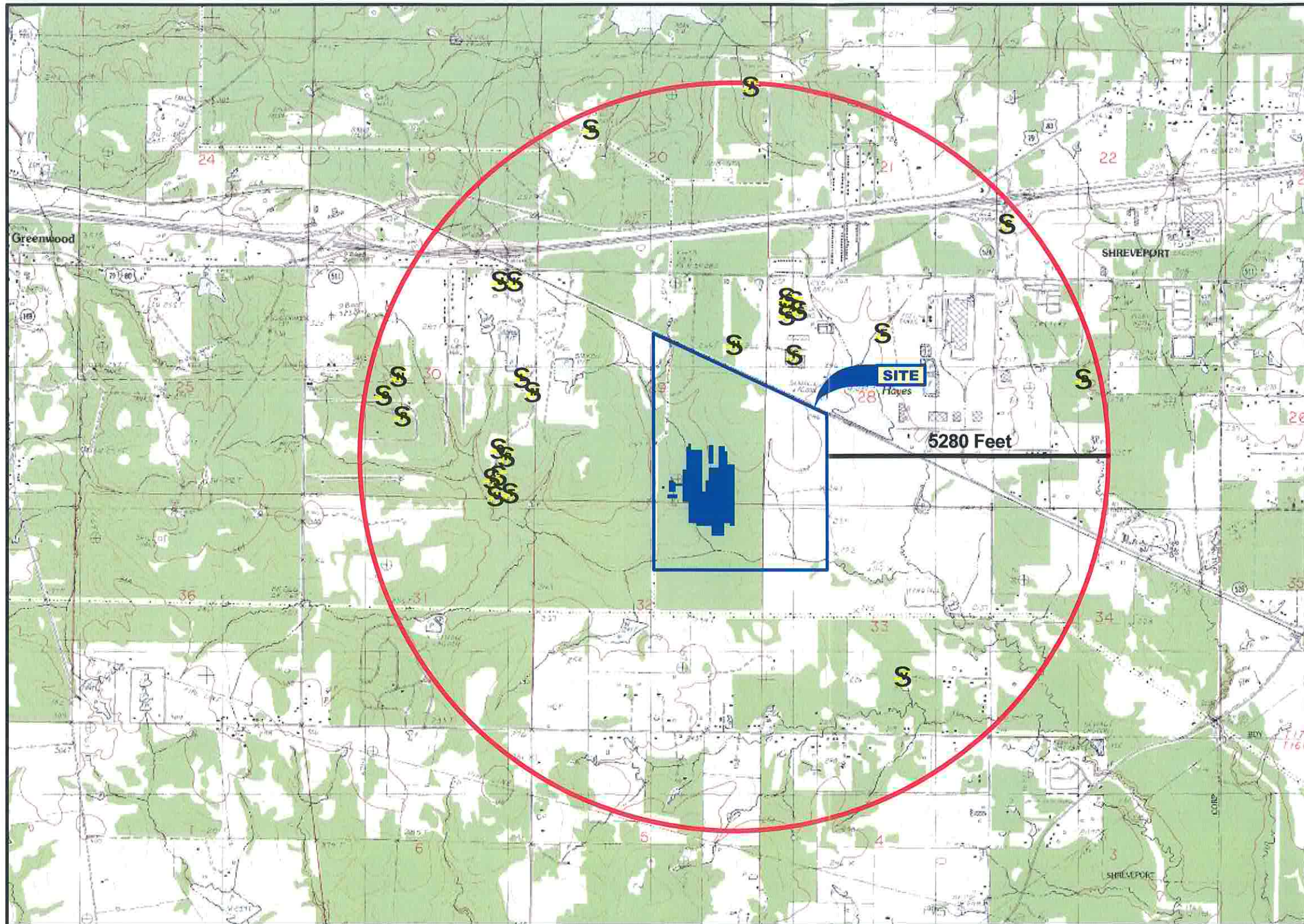


- LEGEND**
- SB-9 (circle with square) SOIL BORING SAMPLE LOCATION
  - TMW-2 (circle with dot) SOIL BORING/TEMPORARY MONITOR WELL SAMPLE LOCATION
  - (orange box) CLAYEY SAND (SC)
  - (yellow box) CLAYEY SILT (ML)
  - (green box) SILTY CLAY (CL)

Figure 6B  
 SOIL PROFILE CROSS SECTION B-B'  
 SHREVEPORT TRUCK ASSEMBLY PLANT  
 SHREVEPORT, LOUISIANA  
 GENERAL MOTORS CORPORATION, SHREVEPORT, LOUISIANA

RE: C-K ASSOCIATES, INC. FIGURE, 840-0142-07,  
 "DRUM WASTE MANAGEMENT PAD", DATED JULY 30, 2001.





| Well | Owner Name      | DOTD No. | Depth(ft) | Well Type     |
|------|-----------------|----------|-----------|---------------|
| A    | THRENTS, GLENN  |          | 180       | DOMESTIC      |
| B    | GAYLE, EDWIN    |          | 175       | DOMESTIC      |
| C    | FOODMAKER       |          | 18        | MONITOR       |
| C    | FOODMAKER       |          | 20        | MONITOR       |
| C    | FOODMAKER       |          | 20        | MONITOR       |
| D    | HOOD, RICKY     |          | 200       | DOMESTIC      |
| E    | CADDO PARISH FM | -110     | 165       | DOMESTIC      |
| F    | ROADWAY EXPRESS |          | 34        | MONITOR       |
| F    | ROADWAY EXPRESS |          | 62        | MONITOR       |
| F    | ROADWAY EXPRESS |          | 32        | MONITOR       |
| G    | VOITH FABRICS   |          | 30        | MONITOR       |
| G    | VOITH FABRICS   |          | 58        | MONITOR       |
| G    | VOITH FABRICS   |          | 29        | MONITOR       |
| G    | VOITH FABRICS   |          | 26        | MONITOR       |
| G    | VOITH FABRICS   |          | 22        | MONITOR       |
| G    | VOITH FABRICS   |          | 28        | MONITOR       |
| H    | INTERSTATE CONC | -672     | 209       | INDUSTRIAL    |
| J    | INTERNAT MACHIN | -680     | 190       | PUBLIC SUPPLY |
| K    | INTERNAT MACHIN | -702     | 170       | PUBLIC SUPPLY |
| L    | LAMPKINS, ERNES |          | 240       | DOMESTIC      |
| M    | CHANDLER, BOB   |          | 220       | DOMESTIC      |
| N    | GREENWOOD WTR   | -545     | 222       | PUBLIC SUPPLY |
| O    | HEFNER, S P     |          | 270       | DOMESTIC      |
| P    | TILLER, BOBBY   |          | 210       | DOMESTIC      |
| Q    | EBLING, BILLY W |          | 224       | DOMESTIC      |
| R    | MCKINNON, HARRY |          | 227       | DOMESTIC      |
| S    | FLOWERS, RAY    |          | 200       | DOMESTIC      |
| S    | TURK, ROBERT    |          | 233       | DOMESTIC      |
| T    | LUBAS, DAVID    |          | 210       | DOMESTIC      |
| U    | GRAVES, TONY    |          | 190       | DOMESTIC      |
| V    | BYRD, LULA      |          | 180       | DOMESTIC      |

**LEGEND**

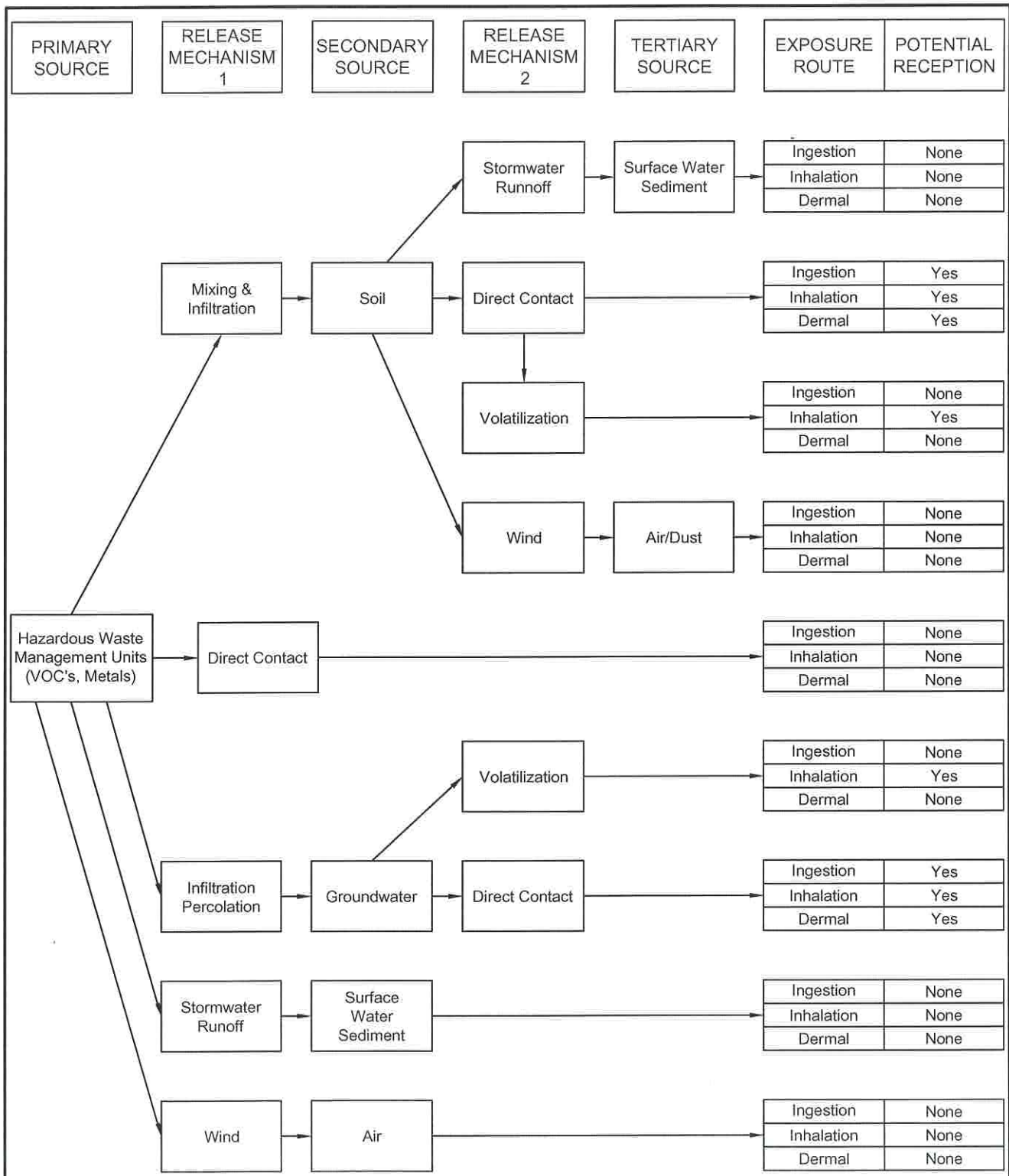
**S** WELL LOCATION



RE: BASE MAP TAKEN FROM USGS 7.5 MINUTE TOPOGRAPHIC MAP, "GREENWOOD, LA".



Figure 7  
**WATER WELL MAP**  
**SHREVEPORT TRUCK ASSEMBLY PLANT**  
**CADDO PARISH, LOUISIANA**  
**GENERAL MOTORS CORPORATION, SHREVEPORT, LOUISIANA**

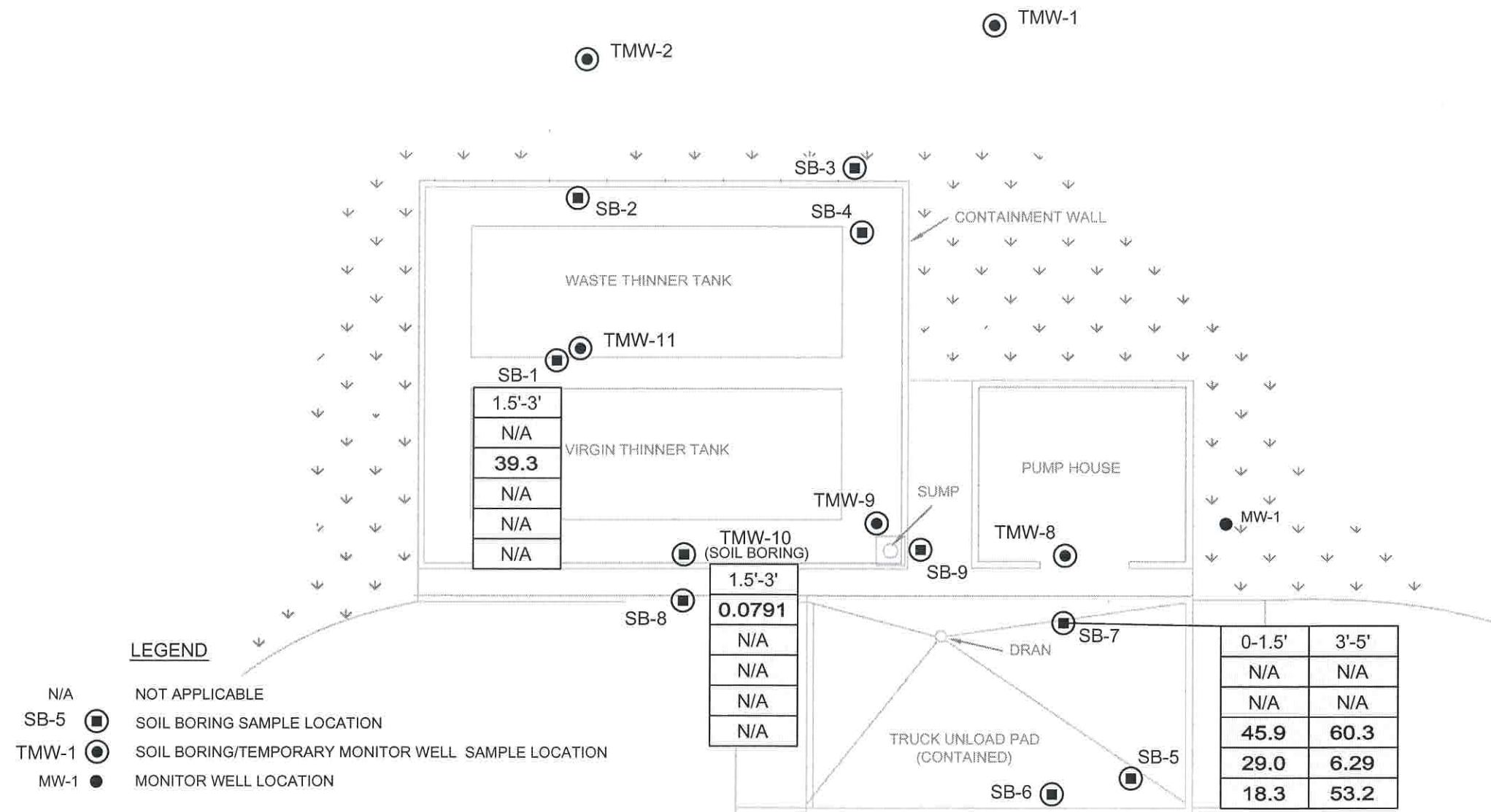


Note: Potential exposures include construction workers only.

Figure 8

CONCEPTUAL SITE MODEL  
 THINNER TANK PAD AND DRUM PAD  
 SHREVEPORT TRUCK ASSEMBLY PLANT  
 GENERAL MOTORS CORPORATION, SHREVEPORT, LOUISIANA





| DEPTH OF SAMPLE, FT | BENZENE CONCENTRATION, mg/kg | ETHYLBENZENE CONCENTRATION, mg/kg | 2-BUTANONE (MEL) CONCENTRATION, mg/kg | 4-METHYL-2-PENTANONE (MIK) CONCENTRATION, mg/kg | ACETONE CONCENTRATION, mg/kg |
|---------------------|------------------------------|-----------------------------------|---------------------------------------|---|------------------------------|
| 1.5'-3'             | N/A                          | 39.3                              | N/A                                   | N/A   | N/A                          |
| 1.5'-3'             | 0.0791                       | N/A                               | N/A                                   | N/A   | N/A                          |
| 0-1.5'              | N/A                          | N/A                               | 45.9                                  | 29.0  | 18.3                         |
| 3'-5'               | N/A                          | N/A                               | 60.3                                  | 6.29  | 53.2                         |

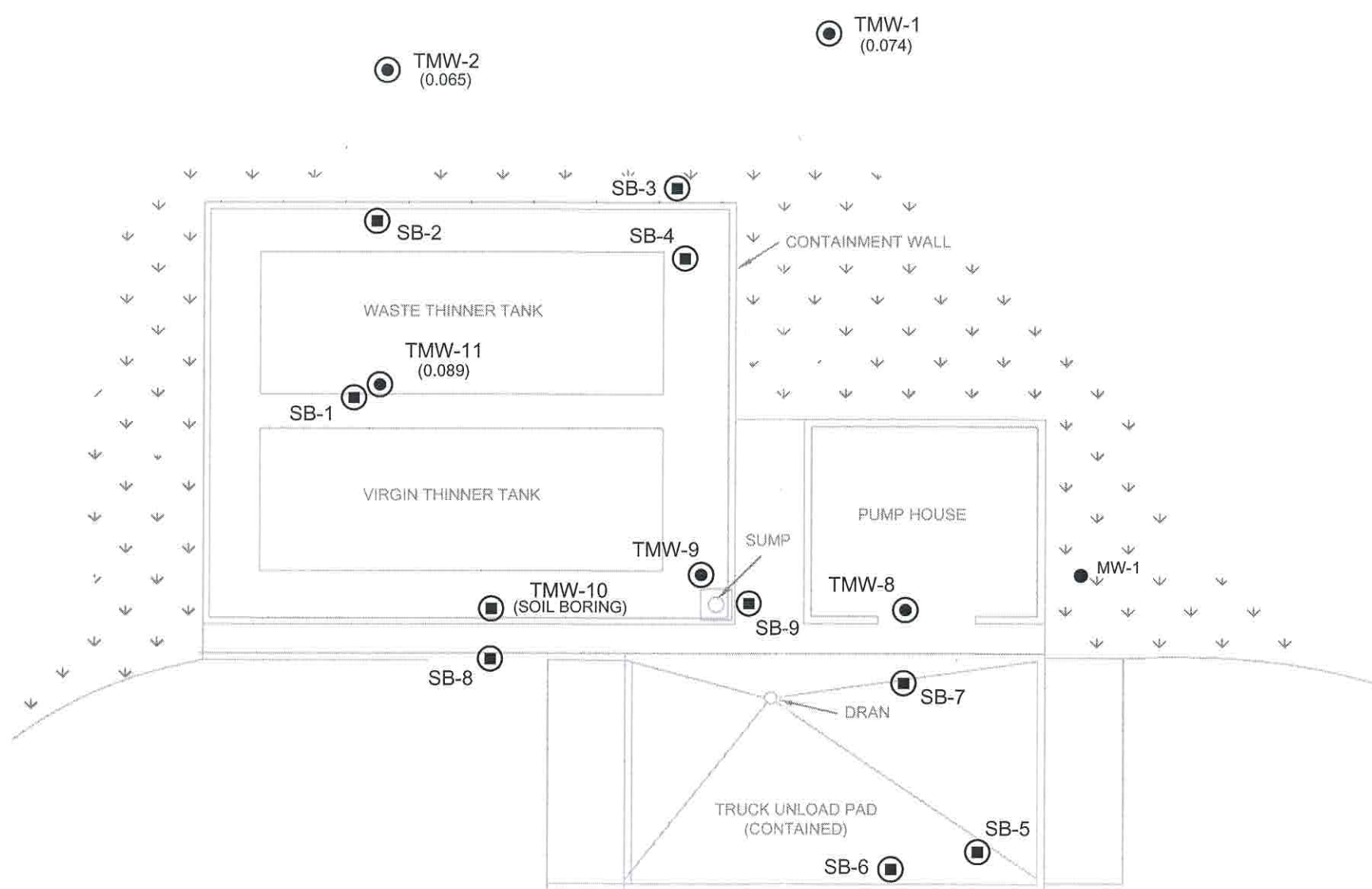
NOTE: ONLY THOSE CONSTITUENTS DETECTED ABOVE RECAP SCREENING STANDARDS ARE DEPICTED.

RE: C-K ASSOCIATES, INC. FIGURE, 840-0142-08,  
"SOLVENT TANK MANAGEMENT PAD SAMPLE LOCATIONS",  
DATED JULY 30, 2001.



Figure 9  
SOIL CONSTITUENT CONCENTRATIONS - THINNER TANK PAD  
SHREVEPORT TRUCK ASSEMBLY PLANT  
CADDO PARISH, LOUISIANA  
GENERAL MOTORS CORPORATION, SHREVEPORT, LOUISIANA





**LEGEND**

- SB-5 SOIL BORING SAMPLE LOCATION
- TMW-1 SOIL BORING/TEMPORARY MONITOR WELL SAMPLE LOCATION
- MW-1 MONITOR WELL LOCATION
- (0.065) ARSENIC CONCENTRATION, mg/L

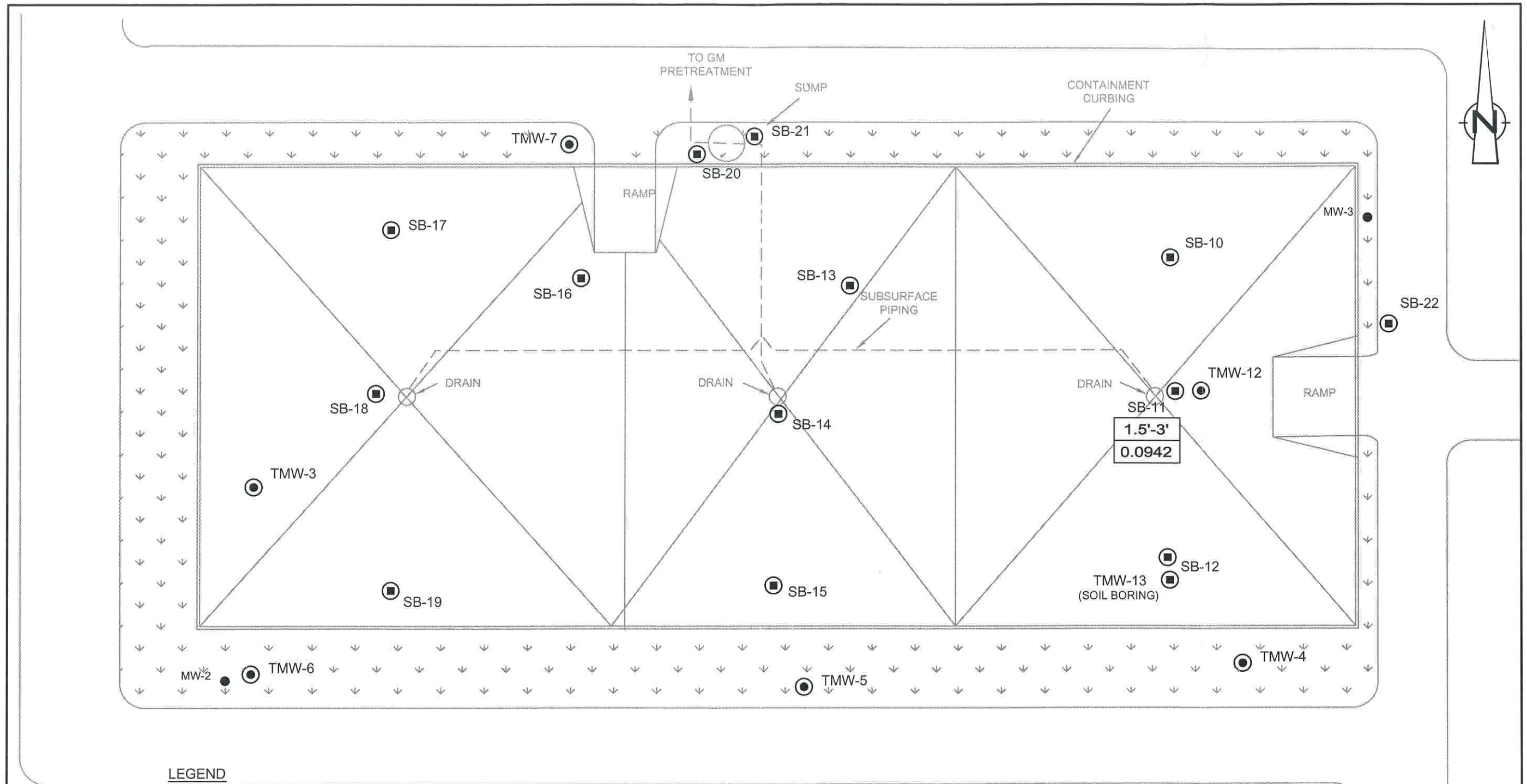
NOTE: ONLY THOSE CONSTITUENTS DETECTED ABOVE RECAP SCREENING STANDARDS ARE DEPICTED.

RE: C-K ASSOCIATES, INC. FIGURE, 840-0142-08,  
"SOLVENT TANK MANAGEMENT PAD SAMPLE LOCATIONS",  
DATED JULY 30, 2001.



Figure 10  
GROUNDWATER CONSTITUENT CONCENTRATIONS-THINNER TANK PAD  
SHREVEPORT TRUCK ASSEMBLY PLANT  
CADDO PARISH, LOUISIANA  
*GENERAL MOTORS CORPORATION, SHREVEPORT, LOUISIANA*





**LEGEND**

- SB-10 SOIL BORING SAMPLE LOCATION
- TMW-4 SOIL BORING/TEMPORARY MONITOR WELL SAMPLE LOCATION
- MW-1 MONITOR WELL LOCATION

| DEPTH OF SAMPLE, FT.                 |
|--------------------------------------|
| TRICHLOROETHENE CONCENTRATION, mg/kg |

NOTE: ONLY THOSE CONSTITUENTS DETECTED ABOVE RECAP SCREENING STANDARDS ARE DEPICTED.

RE: C-K ASSOCIATES, INC. FIGURE, 840-0142-07, "DRUM WASTE MANAGEMENT PAD", DATED JULY 30, 2001.

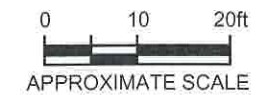
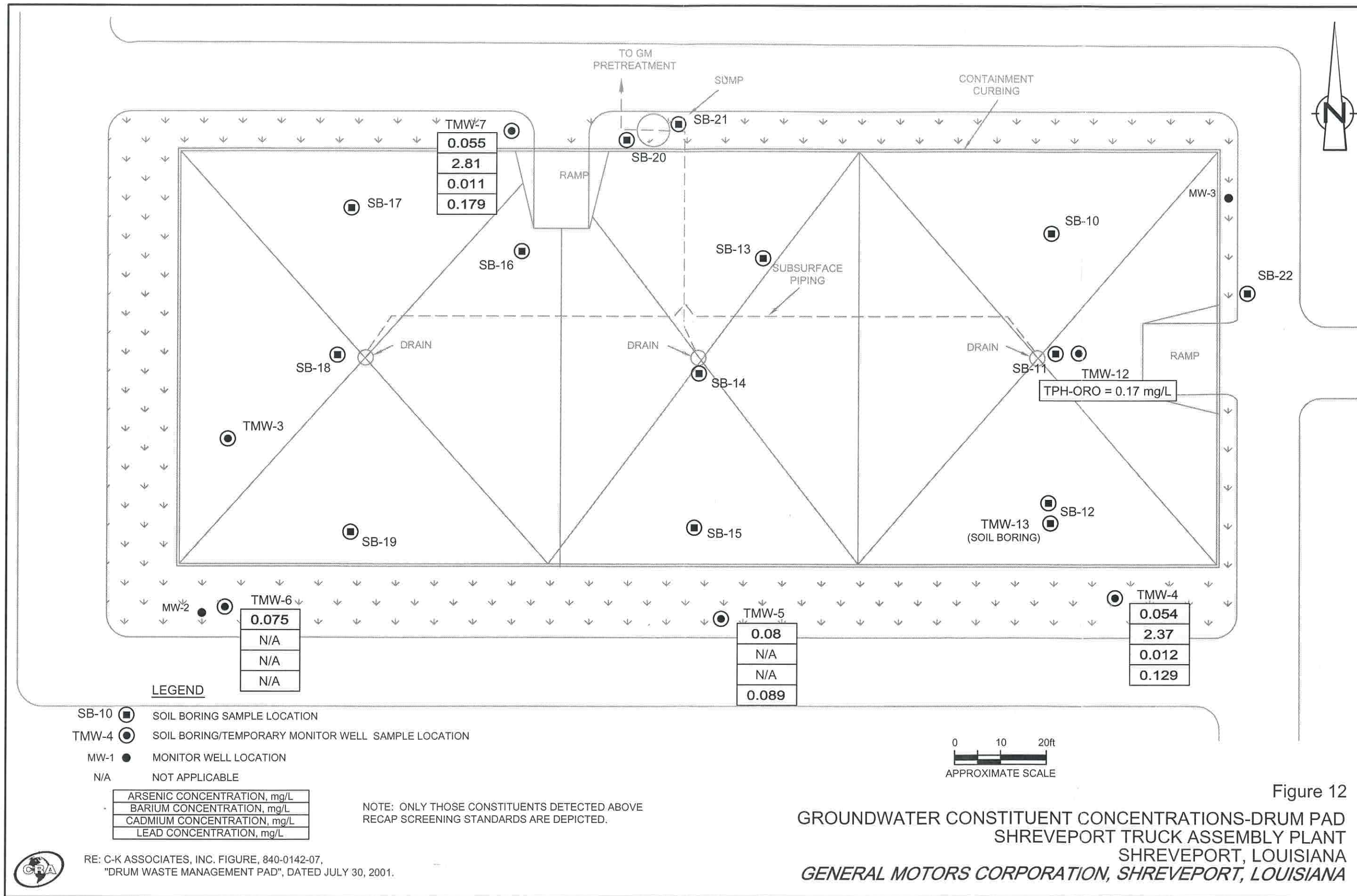


Figure 11

SOIL CONSTITUENT CONCENTRATIONS-DRUM PAD  
SHREVEPORT TRUCK ASSEMBLY PLANT  
SHREVEPORT, LOUISIANA

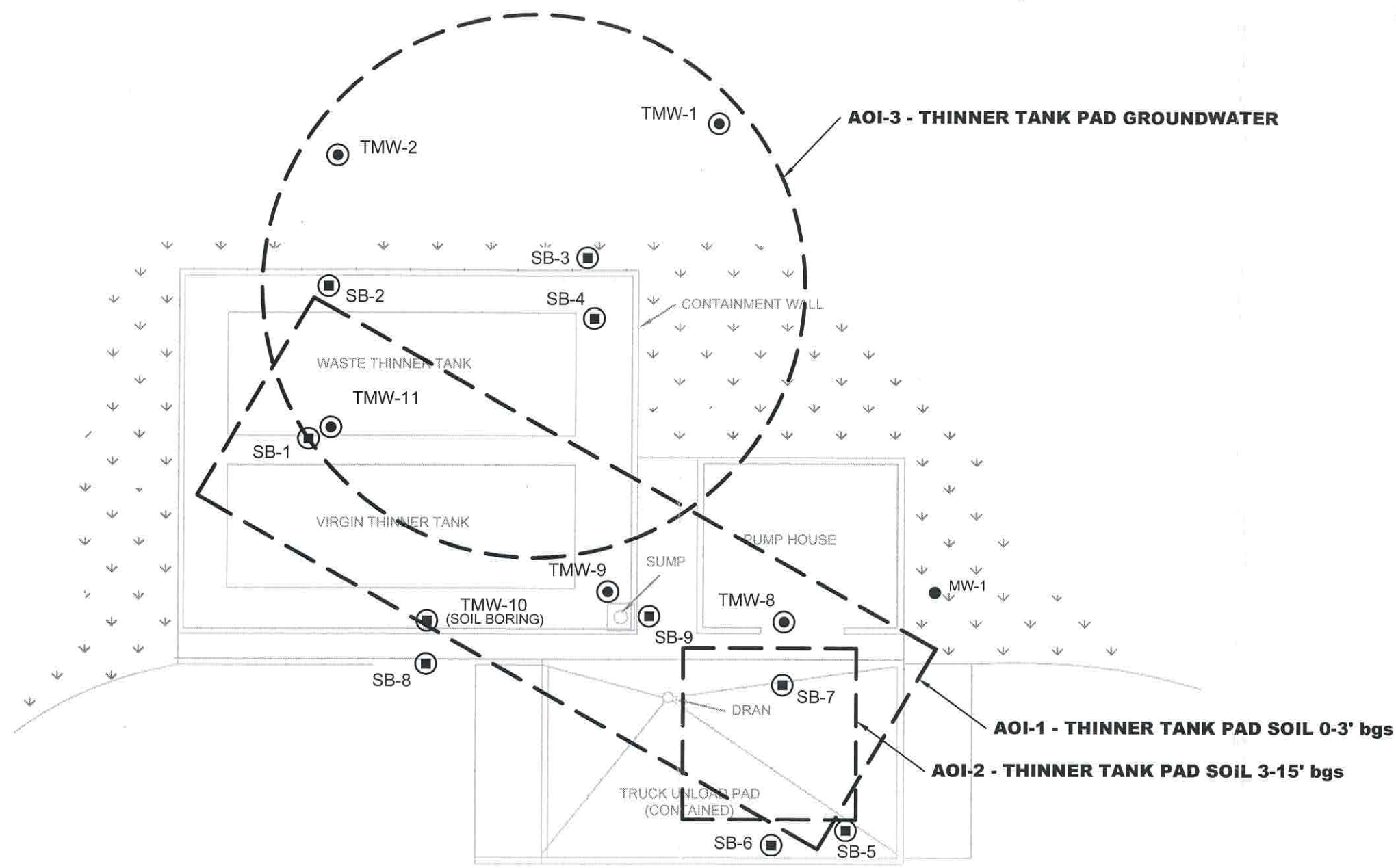
*GENERAL MOTORS CORPORATION, SHREVEPORT, LOUISIANA*





RE: C-K ASSOCIATES, INC. FIGURE, 840-0142-07,  
"DRUM WASTE MANAGEMENT PAD", DATED JULY 30, 2001.





**LEGEND**

- SB-5 SOIL BORING SAMPLE LOCATION
- TMW-1 SOIL BORING/TEMPORARY MONITOR WELL SAMPLE LOCATION
- MW-1 MONITOR WELL LOCATION

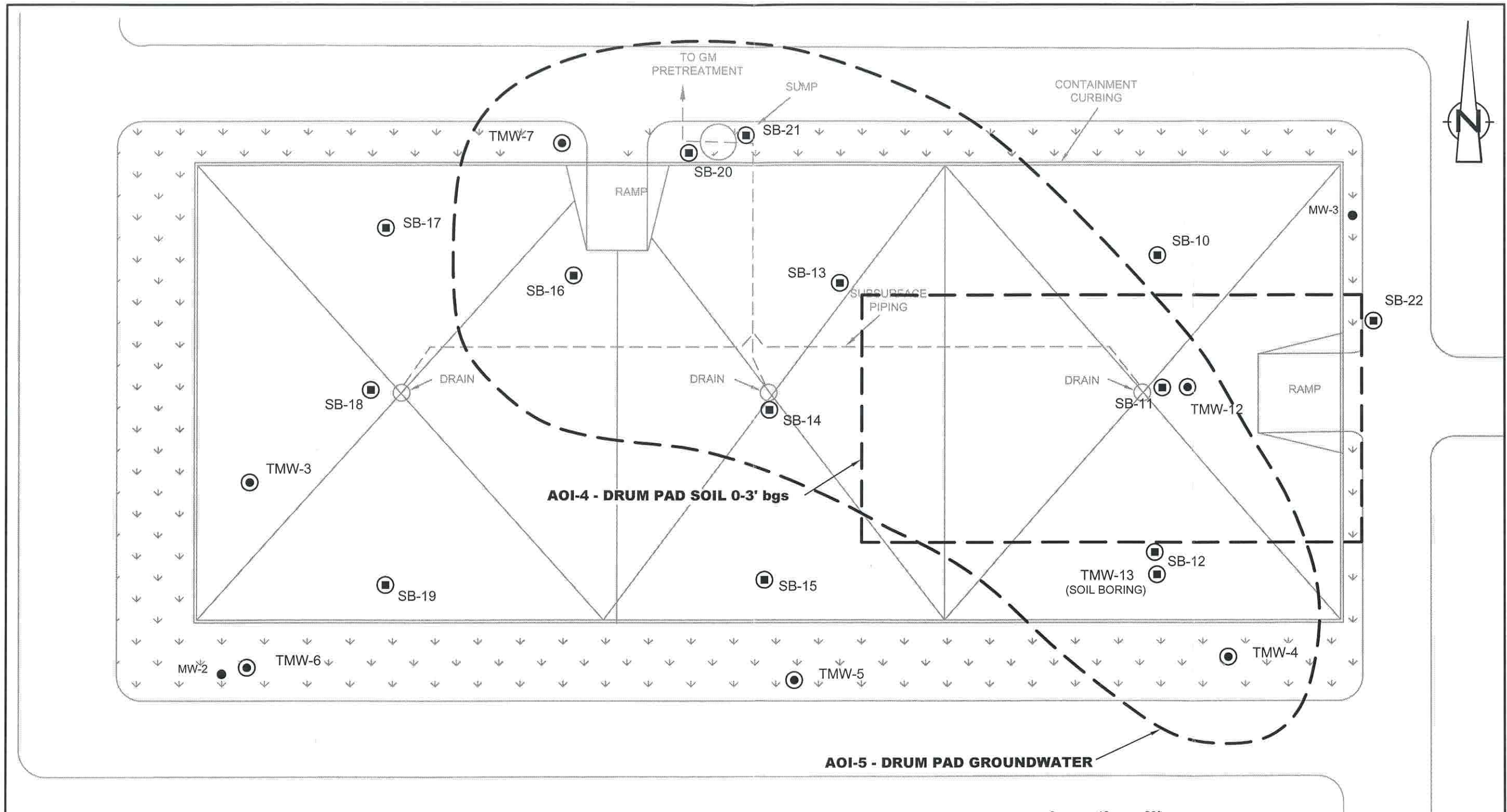


RE: C-K ASSOCIATES, INC. FIGURE, 840-0142-08,  
"SOLVENT TANK MANAGEMENT PAD SAMPLE LOCATIONS",  
DATED JULY 30, 2001.



Figure 13

AOI LOCATIONS - THINNER TANK PAD  
SHREVEPORT TRUCK ASSEMBLY PLANT  
CADDO PARISH, LOUISIANA  
*GENERAL MOTORS CORPORATION, SHREVEPORT, LOUISIANA*



**LEGEND**

- SB-10 SOIL BORING SAMPLE LOCATION
- TMW-4 SOIL BORING/TEMPORARY MONITOR WELL SAMPLE LOCATION
- MW-1 MONITOR WELL LOCATION

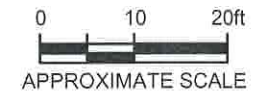
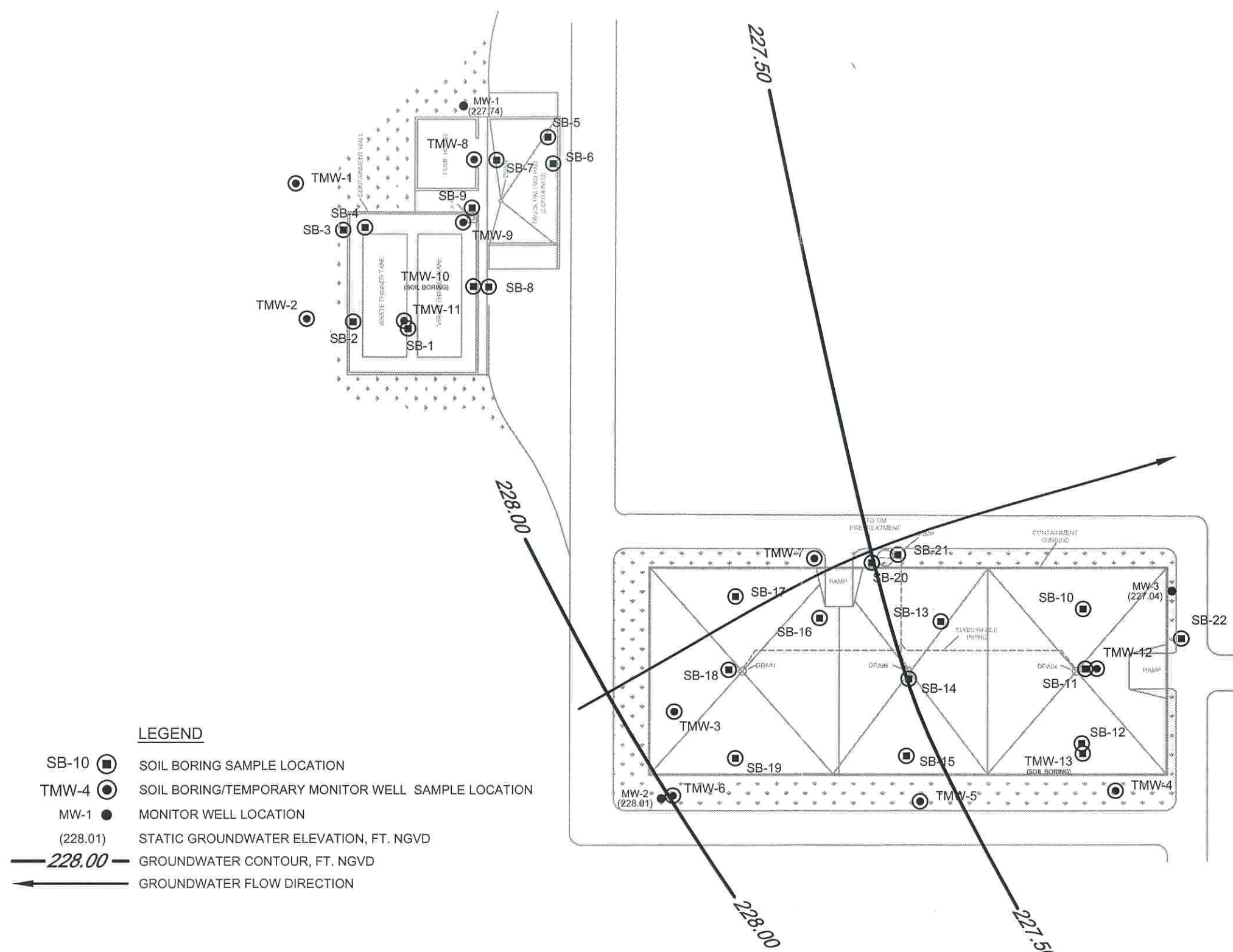


Figure 14

AOI LOCATIONS - DRUM PAD  
 SHREVEPORT TRUCK ASSEMBLY PLANT  
 SHREVEPORT, LOUISIANA  
**GENERAL MOTORS CORPORATION, SHREVEPORT, LOUISIANA**



RE: C-K ASSOCIATES, INC. FIGURE, 840-0142-07,  
 "DRUM WASTE MANAGEMENT PAD", DATED JULY 30, 2001.



**LEGEND**

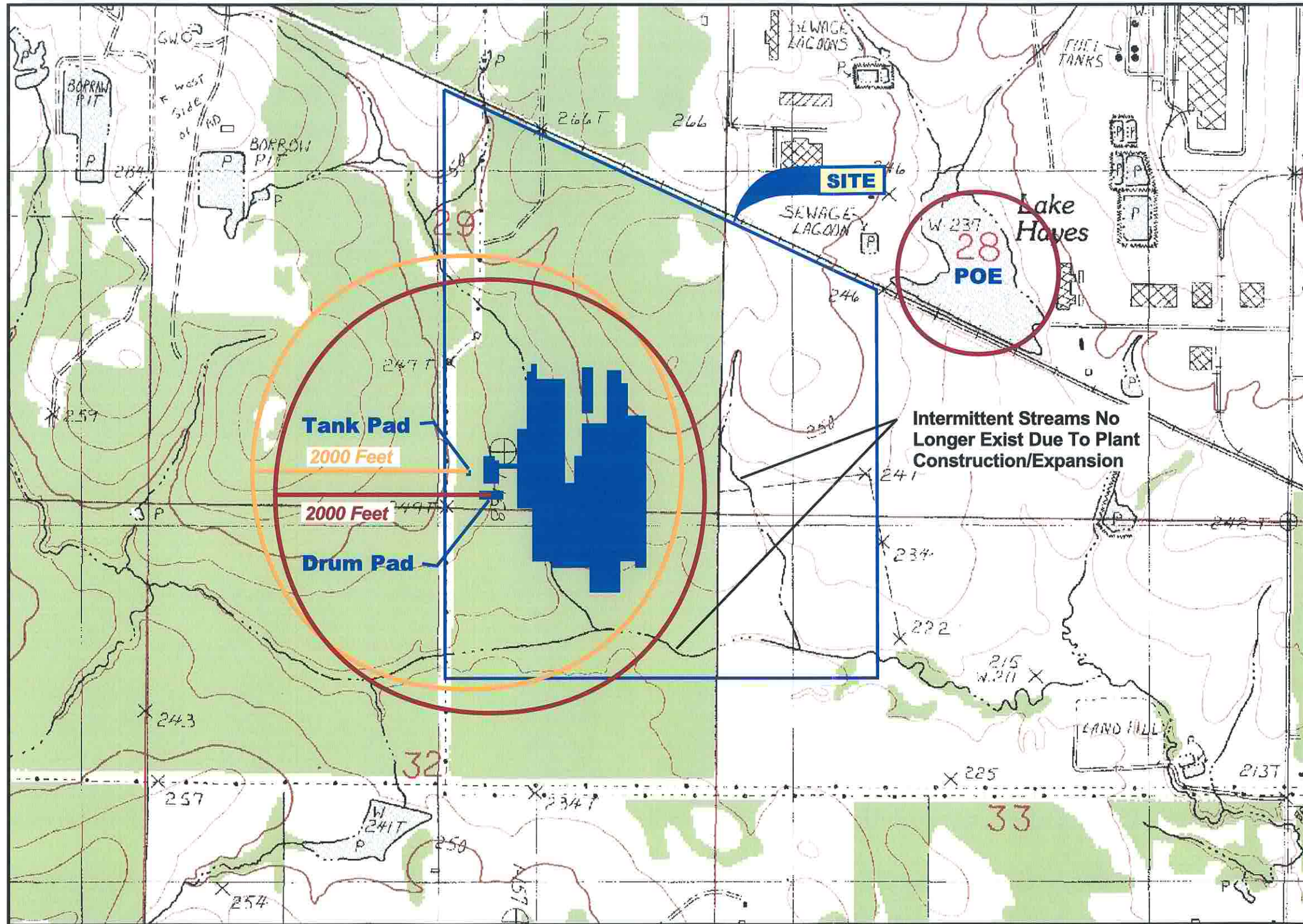
- SB-10 SOIL BORING SAMPLE LOCATION
- TMW-4 SOIL BORING/TEMPORARY MONITOR WELL SAMPLE LOCATION
- MW-1 MONITOR WELL LOCATION
- (228.01) STATIC GROUNDWATER ELEVATION, FT. NGVD
- 228.00** GROUNDWATER CONTOUR, FT. NGVD
- GROUNDWATER FLOW DIRECTION



Figure 15  
POTENTIOMETRIC MAP  
SHREVEPORT TRUCK ASSEMBLY PLANT  
SHREVEPORT, LOUISIANA  
*GENERAL MOTORS CORPORATION, SHREVEPORT, LOUISIANA*



RE: C-K ASSOCIATES, INC. FIGURE, 840-0142-07,  
"DRUM WASTE MANAGEMENT PAD", DATED JULY 30, 2001.



RE: BASE MAP TAKEN FROM USGS 7.5 MINUTE TOPOGRAPHIC MAP, "GREENWOOD, LA".



Figure 16  
**POINT OF EXPOSURE (POE) MAP**  
**SHREVEPORT TRUCK ASSEMBLY PLANT**  
**CADDO PARISH, LOUISIANA**  
**GENERAL MOTORS CORPORATION, SHREVEPORT, LOUISIANA**

17332-00(001)PR-BR004 SEPT 30/2003