

Ms. Christine Matlock
Materials Management Division
Michigan Department of Environment, Great Lakes, and Energy
525 West Allegan
Constitution Hall, 1st Floor South
Lansing, Michigan 48909-7742

Arcadis of Michigan, LLC
28550 Cabot Drive
Suite 500
Novi
Michigan 48377
Tel 248 994 2240
Fax 248 994 2241
www.arcadis.com

Subject:
Southeast Plant 2 PFAS Investigation – Phase 2

Environment

Dear Christine:

Date:
June 12, 2020

This scope of work has been prepared by Arcadis on behalf of the Revitalizing Auto Communities Environmental Response (RACER) Trust for Plant 2 located in Lansing, Michigan (Site). This scope of work describes the further delineation and monitoring of poly and per-fluorinated alkyl substances (PFAS) detected in soil and groundwater located in the southeastern portion of the of Plant 2.

Contact:
Patrick Curry

In March 2019, as part of a sitewide evaluation of PFAS impact to storm sewers, concentrations of Perfluorooctanesulfonic acid (PFOS) were identified at concentrations above the Part 201 Groundwater-Surface Water Interface (GSI) criteria of 12 nanograms per liter (ng/L) (EGLE, 2018) at manhole P2-MH-96 and P2-MH-97 (1,160 ng/L and 394 ng/L, respectively). These results are elevated relative to the downgradient sample locations and indicated an area of the Site that is the primary contributor of PFAS to storm sewers. As summarized in the *Southeast Plant 2 PFAS Investigation Summary*, dated December 12, 2019, soil and groundwater impacts were identified in areas surrounding the elevated detections in the storm sewers. Maximum concentrations of PFOS detected in soil and groundwater are shown on **Figure 1**.

Phone:
810-225-1920

Email:
patrick.curry@arcadis.com

Our ref:
30042872

PHASE 2 SCOPE OF WORK

Based on the results of the first phase of work, the objectives of the Phase 2 activities are as follows:

- Sample additional existing monitoring wells and complete additional vertical aquifer profile (VAP) borings to better characterize the extent of perched PFAS impacts associated with the southeast PFAS area.
- Complete one deep boring near the center of the southeast PFAS area to confirm PFAS has not migrated to the underlying bedrock.

- Install a deep weathered bedrock monitoring well (if groundwater is encountered)

The existing monitoring wells, proposed VAP borings, and proposed deep boring location are shown on **Figure 1**.

Laboratory Analysis

Samples will be sent to SGS Accutest Laboratory (SGS) located in Orlando, Florida and analyzed for the 28 PFAS outlined in the Michigan Department of Environment, Great Lakes, and Energy (EGLE) PFAS Minimum Laboratory Analyte List (EGLE 2019) using modified USEPA Method 537 with isotope dilution. The following field QA/QC samples will be collected and submitted to SGS for analysis:

- Field Duplicates – One (1) field duplicate will be submitted blind for every ten (10) samples collected.
- Matrix Spikes/Matrix Spike Duplicates (MS/MSD) – One (1) sample for every twenty (20) samples will be collected in triplicate and submitted for MS/MSD analysis.
- Equipment Blanks – One (1) equipment blank will be collected per sampling device. Equipment blanks will be collected by pouring PFAS free water over the decontaminated sampling device and collecting the rinsate in a laboratory provided container.

Existing Monitoring Wells

Three (3) existing monitoring wells will be sampled for PFAS, including MW-03-07 and MW-03-08, located east of the southeast Plant 2 PFAS, and P2-MW-02 located to the south.

Shallow VAP Borings

A total of five (5) VAP borings will be completed to further characterize the extent of PFAS in groundwater near the southeast Plant 2 PFAS area. A direct push drilling rig will be used to advance soil borings and collect groundwater samples for PFAS analysis using a screen point sampling device. Continuous soil cores will be collected at each location and described by an Arcadis geologist. Specifically:

- The borings will be completed to a depth of up to 40 feet below grade or to the top of the dense glacial till.
- Below the water table, up to two (2) vertical aquifer profile (VAP) samples will be collected from permeable zones encountered within the predominantly clay matrix.
- Following completion of the boring, the tooling will be withdrawn, and the borehole will be backfilled with bentonite chips to grade.

Deep Boring

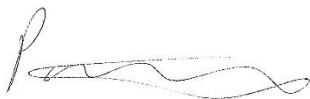
A deep soil boring (1) will be completed near the center of the southeast Plant 2 PFAS area using sonic drilling methods. Bedrock at Plants 2 and 6 becomes shallower moving to the southeast and is expected to be encountered at 50-60 feet bgs in the study area. Care will be taken during drilling to not drag PFAS impacts from the perched zone into deeper sediments.

- The sonic borehole will be advanced to the glacial till unit encountered beneath the fill material (~20-30 feet bgs). A 6-inch inside diameter permanent steel casing will then be cemented into the glacial till.

- Once the steel casing has cured (minimum of 24 hours), a 6-inch borehole will then be advanced through the steel casing to the weathered bedrock zone.
- Soil samples will be collected nominally every 10 feet, beginning at the ground surface and continuing to the weathered bedrock zone, for analysis of PFAS to confirm PFAS is not migrating vertically from the perched zone to the bedrock aquifer.
- Upon reaching the weathered bedrock/bedrock zone, a groundwater sampling assembly will be lowered within the borehole to verify the presence and depth to groundwater. Assuming groundwater is encountered, a groundwater sample will be collected for analysis of PFAS.
- Assuming groundwater is encountered, a 2-inch diameter well will be installed in weathered bedrock consisting of a 5-foot stainless steel wire wrap screen and PVC riser.
- An appropriate sand pack will be placed around the well screen followed by at least 2 feet of choker sand, and then neat cement to grade.
- The monitoring well will be developed by alternating a surge block and submersible pump until relatively free of fine-grained material and then completed with a locking stick-up well cover.

Following completion of the Phase 2 investigation activities, RACER will provide a summary of the results to EGLE. Recommendations for additional work will be based on the findings and further discussion with EGLE. If you have any questions regarding the scope of work described above, please contact Patrick Curry (Arcadis) at 810-225-1926 or Dave Favero (RACER Trust) at 734-879-9525.

Sincerely,



Patrick Curry, PG, CPG
Technical Expert

Copies:
Dave Favero, RACER Trust

Enclosures:

Figures

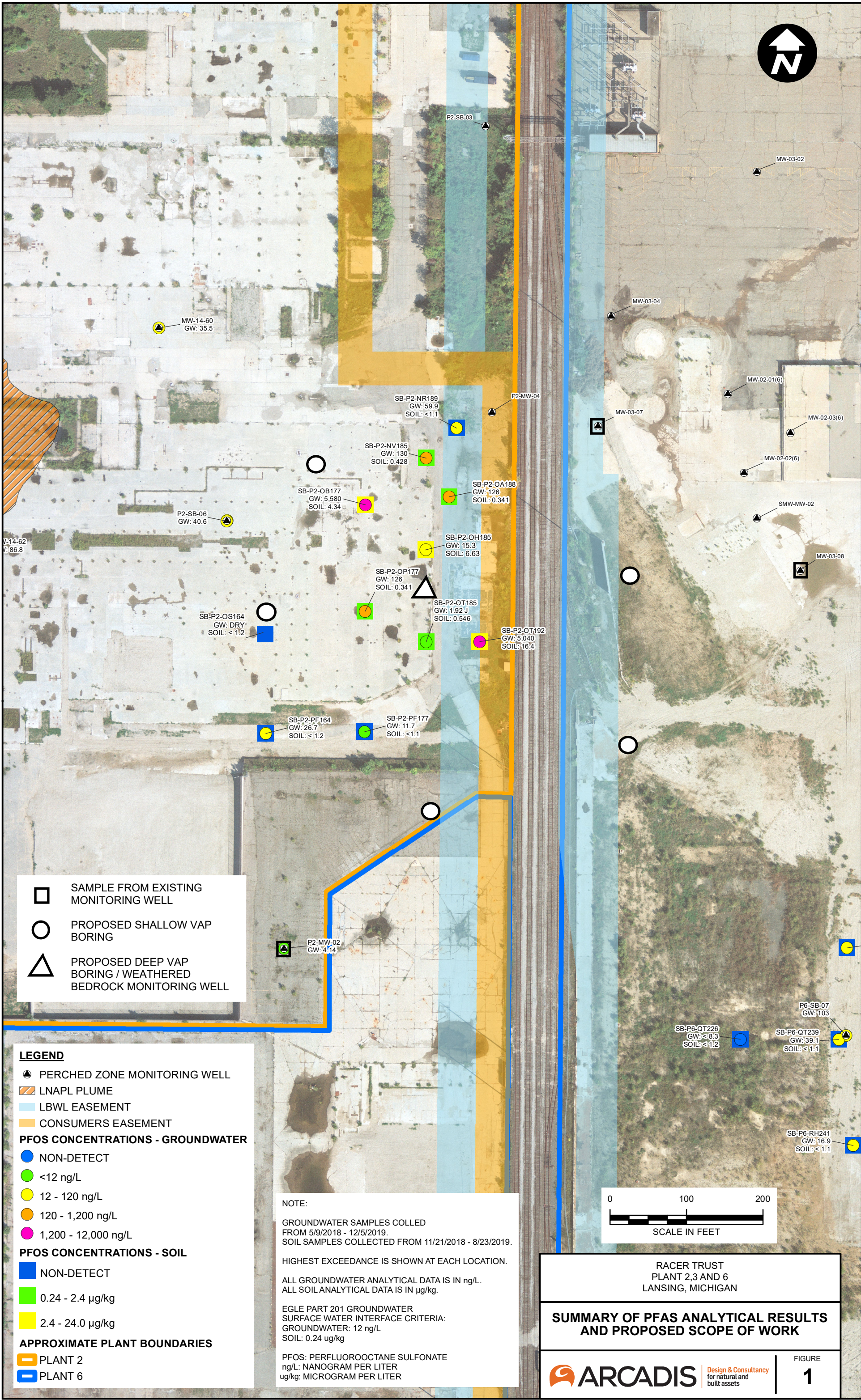
- 1 Summary of PFOS Analytical Results and Proposed Scope of Work

Attachments

- 1 Poly- and Perfluorinated Alkyl Substances (PFAS) Field Sampling Guidance

FIGURES





- SAMPLE FROM EXISTING MONITORING WELL
- PROPOSED SHALLOW VAP BORING
- PROPOSED DEEP VAP BORING / WEATHERED BEDROCK MONITORING WELL

LEGEND

- PERCHED ZONE MONITORING WELL
- LNAPL PLUME
- LBWL EASEMENT
- CONSUMERS EASEMENT

PFOS CONCENTRATIONS - GROUNDWATER

- NON-DETECT
- <12 ng/L
- 12 - 120 ng/L
- 120 - 1,200 ng/L
- 1,200 - 12,000 ng/L

PFOS CONCENTRATIONS - SOIL

- NON-DETECT
- 0.24 - 2.4 µg/kg
- 2.4 - 24.0 µg/kg

APPROXIMATE PLANT BOUNDARIES

- PLANT 2
- PLANT 6

NOTE:

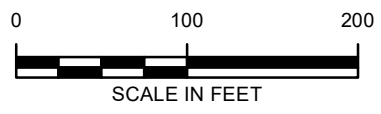
GROUNDWATER SAMPLES COLLECTED FROM 5/9/2018 - 12/5/2019.
 SOIL SAMPLES COLLECTED FROM 11/21/2018 - 8/23/2019.

HIGHEST EXCEEDANCE IS SHOWN AT EACH LOCATION.

ALL GROUNDWATER ANALYTICAL DATA IS IN ng/L.
 ALL SOIL ANALYTICAL DATA IS IN µg/kg.

EGLE PART 201 GROUNDWATER SURFACE WATER INTERFACE CRITERIA:
 GROUNDWATER: 12 ng/L
 SOIL: 0.24 µg/kg

PFOS: PERFLUOROOCTANE SULFONATE
 ng/L: NANOGRAM PER LITER
 µg/kg: MICROGRAM PER LITER



RACER TRUST
 PLANT 2,3 AND 6
 LANSING, MICHIGAN

SUMMARY OF PFAS ANALYTICAL RESULTS AND PROPOSED SCOPE OF WORK

ARCADIS Design & Consultancy for natural and built assets

FIGURE **1**

5 hUW a Ybh%

D: 5 G'GUa d`]b[`; i]XUbWY'



POLY- AND PERFLUORINATED ALKYL SUBSTANCES (PFAS) FIELD SAMPLING GUIDANCE

Rev: 4

Rev Date: March 26, 2019

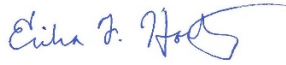


VERSION CONTROL

Revision No	Revision Date	Page No(s)	Description	Reviewed by
0	April 27, 2017	All	Initial Release	Erica Kalve Erika Houtz Sue Tauro
1	June 19, 2018	1 through 4 and 17	Updated Information on Sampling Materials	Erica Kalve Erika Houtz
2	October 15, 2018	6 to 16	Minor updates on laboratory elements, updates to decontamination procedures, and clarification on equipment and reagent blank collection	Erika Houtz Erica Kalve
3	December 17, 2018	4, 6, 17	Removed Sharpies from acceptable field writing implements; Changed language in Section 3.2 and Section 10.5 to provide stricter guidance for DoD projects.	Erika Houtz, Erica Kalve
4	March 26, 2019	4,5	Removed Citranox from acceptable Decon solutions in Table 1a, added all fluoropolymer containing materials to prohibited items in Table 1b. Made a correction that Liquinox contains trace levels of 1,4 Dioxane, not Alconox.	Erika Houtz

APPROVAL SIGNATURES

Prepared by:



3/26/2019

Erika F. Houtz, PhD, PE
Environmental Engineer and PFAS Analytical
Lead

Date:

Reviewed by:



12/17/2018

Erica Kalve, PG-CA
Emerging Contaminants Focus Group Leader

Date:

1 INTRODUCTION

This document describes general and/or specific procedures, methods, actions, steps, and considerations to be used and observed by Arcadis staff when performing work, tasks, or actions under the scope and relevancy of this document. This document may describe expectations, requirements, guidance, recommendations, and/or instructions pertinent to the service, work task, or activity it covers.

It is the responsibility of the Arcadis Certified Project Manager (CPM) to provide this document to the persons conducting services that fall under the scope and purpose of this procedure, instruction, and/or guidance. The Arcadis CPM will also ensure that the persons conducting the work falling under this document are appropriately trained and familiar with its content. The persons conducting the work under this document are required to meet the minimum competency requirements outlined herein, and inquire to the CPM regarding any questions, misunderstanding, or discrepancy related to the work under this document.

This document is not considered to be all inclusive nor does it apply to any and all projects. It is the CPM's responsibility to determine the proper scope and personnel required for each project. There may be project- and/or client- and/or state-specific requirements that may be more or less stringent than what is described herein. The CPM is responsible for informing Arcadis and/or Subcontractor personnel of omissions and/or deviations from this document that may be required for the project. In turn, project staff are required to inform the CPM if or when there is a deviation or omission from work performed as compared to what is described herein.

In following this document to execute the scope of work for a project, it may be necessary for staff to make professional judgment decisions to meet the project's scope of work based upon site conditions, staffing expertise, state-specific requirements, health and safety concerns, etc. Staff are required to consult with the CPM when or if a deviation or omission from this document is required that has not already been previously approved by the CPM. Upon approval by the CPM, the staff can perform the deviation or omission as confirmed by the CPM.

2 SCOPE AND APPLICATION

The purpose of this Technical Guidance Instructions (TGI) is to provide guidance on field sampling to be used for poly-and perfluorinated alkyl substances (PFASs). This protocol was adapted from various sources including Arcadis Australia, Transport Canada, and the U.S Army Corp of Engineers (USACE) Omaha. In general, sampling techniques used for PFAS site characterization are consistent with conventional sampling techniques used in the environmental industry, but special consideration is made regarding PFAS-containing materials and cross-contamination potential. **Table 1a** provides a summary of materials that have been approved for site investigation; this list is expected to grow longer as industry experience increases. **Table 1b** provides a summary of field equipment and materials that have available testing information and/or industry knowledge regarding PFAS cross-contamination potential and it is recommended that these materials be prohibited for sample collection; for materials that are suspected of containing PFASs and/or to retain PFASs, these recommendations are considered preliminary and subject to change.

Table 1a: Summary of Acceptable Sampling Equipment and Materials for PFAS Site Investigations

Sampling Materials	Additional Considerations	References
Water Sampling Materials		
High density polyethylene (HDPE) or silicone tubing materials	--	DER 2016; USACE 2016; NHDES 2016; MassDEP 2017
HDPE HydraSleeves™	Low density polyethylene (LDPE) HydraSleeves™ are not recommended	USACE 2016; MassDEP 2017
Drilling and Soil Sampling Materials		
PFAS-free drilling fluids	--	DER 2016
PFAS-free makeup water	Confirm PFAS-free water source via laboratory analysis prior to investigation	--
Acetate liners	For use in soil sampling	USACE 2016
Sample Containers and Storage		
HDPE sample containers with HDPE lined lids for soil and water samples	Laboratory should provide; whole bottle analysis of aqueous samples combined with a solvent rinse of bottle is recommended	DER 2016, MassDEP 2017
Ice contained in plastic (polyethylene) bags (double bagged)	--	DER 2016; USACE 2016; NHDES 2016; MassDEP 2017
Field Documentation		
Ball point pens	--	MassDEP 2017
Standard paper and paper labels	--	DER 2016; USACE 2016; NHDES 2016; MassDEP 2017
Decontamination		
Water-only decontamination	Confirm PFAS-free water source via laboratory analysis prior to investigation	DER 2016
Alconox® or Liquinox® followed by deionized water or PFAS-free water rinse	Liquinox® known to contain trace levels of 1,4-dioxane	NHDES 2016; USACE 2016; MassDEP 2017
Methanol, isopropanol, or acetone	Special health and safety precautions are necessary	UNEP 2015; USACE 2016

Note: This list is considered preliminary and additional materials may be added as additional information becomes available. Project teams are expected to follow a methodical evaluation process of materials to be used and confirm acceptance prior to implementation of field activities.

Table 1b: Summary of Sampling Equipment and Materials Not Recommended for PFAS Site Investigations.

Sampling Materials	Known PFAS-Containing Materials	Suspected PFAS-Containing Materials	Materials with Potential to Retain PFASs	References
Water Sampling Materials				
Teflon®, PTFE-containing or other fluoropolymer coated or containing field equipment (e.g., tubing, bailers, liners, tape, plumbing paste, pump parts)	x			DER 2016; USACE 2016; NHDES 2016; MassDEP 2017
Passive diffusion bags			x	MassDEP 2017
LDPE HydraSleeves™			x	USACE 2016; MassDEP 2017
Water particle filters			x	MassDEP 2017
Drilling and Soil Sampling Materials				
Aluminum foil			x	DER 2016; USACE 2016; NHDES 2016; MassDEP 2017
Drilling fluid containing PFASs	x	x		DER 2016
Sample Containers and Storage				
Glass sample containers with lined lids			x	DER 2016; USACE 2016; NHDES 2016; MassDEP 2017
LDPE containers and lined lids			x	USACE 2016
Teflon® or PTFE- lined lids on containers (e.g., sample containers, rinsate water storage containers)	x			DER 2016; USACE 2016; NHDES 2016; MassDEP 2017
Reusable chemical or gel ice packs (e.g., BlueIce®)		x		DER 2016; USACE 2016; NHDES 2016; MassDEP 2017
Field Documentation				
Self-sticking notes and similar office products (e.g., 3M Post-it-notes)		x		DER 2016; USACE 2016; NHDES 2016; MassDEP 2017
Waterproof paper, notebooks, and labels	x			DER 2016, MassDEP 2017
Non-Sharpie® markers		x		NHDES 2016
Decontamination				
[Some] detergents and decontamination solutions (e.g., Decon 90® Decontamination Solution)	x	x		DER 2016; NHDES 2016; MassDEP 2017

Note: For materials that are suspected of containing PFASs, or have the potential to retain PFASs, project specific considerations may provide adequate justification for use during the field event. For example, further evaluation may be conducted in the form of pre-field equipment blank sample analysis.

Downloaded and printed copies from the Approved Procedure Library are uncontrolled documents.

Given the extremely low detection limits associated with PFAS analysis and the many potential sources of trace levels of PFASs, field personnel are advised to err on the side of caution by strictly following these protocols, frequently replacing nitrile gloves, and rinsing field equipment to help mitigate the potential for false detections of PFASs. A summary of other specific items related to field sampling for PFASs are discussed in the sections below.

This TGI applies to all Arcadis and subcontractor personnel involved in field sampling for PFAS.

3 PERSONNEL QUALIFICATIONS

3.1 Sampling Personnel

Field personnel must have current health and safety training, including 40-hour HAZWOPER training, site supervisor training, and site-specific training, as needed. In addition, field personnel will be versed in the other relevant SOPs (e.g., low flow sampling) and will possess the skills and experience necessary to successfully complete the desired field work. The site Health and Safety Plan (HASP) and other documents will identify any other training requirements such as site-specific safety training or access control requirements.

3.2 Laboratories

These laboratories are example laboratories that could be used to analyze environmental media for PFASs, pending project approval:

- United States: TestAmerica, SGS, Vista, ALS, and Eurofins
- Canada: Axys-SGS and Maxxam Laboratories

Other laboratories may be used if they are appropriately accredited for PFAS analysis according to any project requirements. It is recommended that a laboratory is Environmental Laboratory Accreditation Program (ELAP)-accredited for PFAS analysis in accordance with the Department of Defense (DoD) Quality Systems Manual (QSM) 5.1 Table B-15 or any subsequent updates. **For all data collection efforts at DoD sites, PFAS data must be obtained using a method that is DoD ELAP-accredited under QSM 5.1 or later.**

4 EQUIPMENT LIST

The following equipment and materials must be available for sampling:

- Site plan of sampling locations, relevant work plan (or equivalent), and this TGI;
- Appropriate health and safety equipment, as specified in the site HASP;
- Dedicated plastic sheeting (preferably high-density polyethylene [HDPE]) or other clean surface to prevent sample contact with the ground;
- Conductivity/temperature/pH meter;
- Dissolved oxygen meter, oxidation reduction potential meter, and turbidity meter;
- Depth to water meter;

- If using low-flow groundwater sampling techniques, peristaltic pump (groundwater sampling)/bladder pump (with PFAS free bladder/ HDPE bladder), flow through cell, and accompanying HDPE and silicone tubing;
- Hydrasleeves, if using Hydrasleeves for groundwater sampling;
- Metal trowel for soil samples; specialized soil/sediment sampling equipment as required;
- Brushes for scrubbing sampling equipment;
- Pens, pencils, and/or Sharpies for writing;
- Clipboards, field binders, and field note pages that are not waterproof;
- Labeled sample bottles:
 - Water: HDPE bottles fitted with polypropylene screw cap only; some types of PFAS samples (primarily drinking water) may require preservative, which will be indicated by the laboratory conducting the analysis. The laboratory will specify the sample bottle volume.
 - Soil and sediment: HDPE bottles fitted with polypropylene screw cap only; no preservatives. The laboratory will specify the sample bottle volume.
- If high concentrations of PFASs related to class B firefighting foams are expected, bring additional small vials to conduct field-based shaker tests for foaming;
- Ziploc® bags to hold ice and samples;
- Bottles containing “PFAS-free” water used for reagent blanks;
- Labeled coolers for samples with ice; Blue ice is not permitted;
- Deionized or distilled water for initial decontamination rinsing;
- “PFAS-free” water provided by the laboratory for final decontamination rinsing;
- Methanol, isopropanol, or acetone if able to be brought safely to field site; especially important for decontamination during soil sampling;
- Alconox or Liquinox®;
- Packing and shipping materials;
- Groundwater Sampling Log; and
- Chain-of-Custody (COC) Forms.

5 CAUTIONS

5.1 Food Packaging

Some food packaging may be treated with PFAS-containing chemicals to prevent permeation of oil and water in the food outside of the packaging. To avoid potential food packaging-related PFAS contact:

- Do not bring any food outside of the field vehicles onsite and eat snacks and meals offsite.
- Wash hands after eating.
- Remove any field garments or outer layers prior to eating. Do not put them back on until done eating and hands are washed.

5.2 Field Gear

5.2.1 Clothing

Many types of clothing are treated with PFASs for stain and water resistance, in particular outdoor performance wear under brand names such as Gore-Tex®. To avoid potential clothing-related PFAS contact:

- Do not wear any outdoor performance wear that is water or stain resistant, or appears to be. Err on the side of caution.
- Wear pre-laundered (multiple washings, i.e. 6+) clothing that is not stain resistant or water proof.
- Natural fabrics such as cotton are preferred. Synthetic fabrics may also be acceptable if there is no indication on the label that the fabric is water and stain resistant.
- Most importantly, avoid contacting your clothing with sampling equipment, bottles, and samples.

5.2.2 Personal Protective Equipment

Safety Footwear

Some safety footwear has been treated to provide a degree of waterproofing and increased durability and may represent a source of trace PFASs. For the health and safety of field personnel, footwear must be protected at all times to avoid potential PFAS contamination. To do this:

- Do not contact your footwear with equipment, bottles, or samples in any way.
- Do not allow gloves used for sampling to come in contact with safety footwear.

Nitrile Gloves

Wear disposable nitrile gloves at all times. Don a new pair of nitrile gloves **before** the following activities at each sample location:

- Decontamination of re-usable sampling equipment;
- Contact with sample bottles or “PFAS-free” water bottles;
- Insertion of anything into the sample ports (e.g., HDPE tubing); and
- Handling of any quality assurance/quality control (QA/QC) samples including field blanks and equipment blanks.

Don a new pair of nitrile gloves **after** the following activities:

- Handling of any non-dedicated sampling equipment;
- Contact with contaminated surfaces; or
- When judged necessary by field personnel.

5.3 Personal Hygiene

- Shower at night.
- Do not use personal care products after showering such as lotions, makeup, and perfumes, UNLESS medically necessary.
- Use sunscreen and insect repellent ONLY if necessary for health and safety. If they are necessary, apply sunscreen and repellent prior to initiating field sampling. If sunscreen and/or repellent need to

Downloaded and printed copies from the Approved Procedure Library are uncontrolled documents.

be reapplied, ensure a safe distance away from the sampling locations and equipment (i.e., more than 10 meters (m) away). Wash hands after application.

5.4 Visitors

Visitors to the site are asked to remain at least 10 m from sampling areas.

5.5 Rain Events

Special care should be taken when rain is falling at the project site:

- Do not perform field sampling when rain fall is persistent at a consistent rate that saturates the ground (i.e., formation of puddles) because rain gear is not permitted while sampling. Intermittent showers or fog are acceptable conditions to proceed. If rain showers occur; field gear must be removed from the monitoring well location until the rain subsides.
- If project timelines are tight, consider the use of a gazebo tent that can be erected over the top of the monitoring well to provide shelter from the rain. The canopy material is possibly a PFAS-treated surface and should be managed as such; therefore, wear gloves when moving the tent, change them immediately after moving the tent, and avoid further contact with the tent until all sampling activities have been finished and the team is ready to move on to the next site.

6 HEALTH AND SAFETY CONSIDERATIONS

- The ability to safely access the surface water sampling locations must be verified before sampling.
- Field activities must be performed in accordance with the site HASP, a copy of which will be present onsite during such activities.
- Safety hazards associated with sampling surface water include fast-moving water, deep water, and steep slopes close to sampling sites. Use extreme caution when approaching sampling sites.
- If thunder or lightning is present, discontinue sampling and take cover until 30 minutes have passed after the last occurrence of thunder or lighting.
- Use caution when removing well caps as well may be under pressure, cap can dislodge forcefully and cause injury.

7 PROCEDURE

7.1 Field Equipment Cleaning

Reusable field sampling equipment will require cleaning between uses. For groundwater sampling, between uses, decontaminate the flow-through cell and any non-dedicated equipment (i.e., interface probe of depth to water meter) that comes into contact with well water. Trowels and other materials used to sample soil samples will also require decontamination, although dedicated, single use equipment such as liners should be used where possible.

After donning a new pair of nitrile gloves:

- Rinse sampling equipment with Alconox or Liquinox® cleaning solution; Scrub equipment with a plastic brush if needed;
- Rinse two times with distilled water or deionized water;

Downloaded and printed copies from the Approved Procedure Library are uncontrolled documents.

- Rinse one time with “PFAS-free” water or once with methanol/isopropanol/acetone, if it is available, and once with “PFAS-free” water; organic solvents are especially useful for decontaminating soil sampling equipment. If organic cleaning solvents cannot be brought to site, scrub equipment a second time after a single distilled or deionized water rinse, then rinse two times with distilled or deionized water and once with “PFAS-free” water (i.e., two scrubbing and four water rinsings total).
- Collect all rinsate in a sealed pail for disposal. Do not reuse decontamination solutions between sampling locations.

7.2 Borehole/Monitoring Well Development

If a drill rig is being used to drill for soil cores or to install monitoring wells, wear clean nitrile gloves before collecting each continuous soil sample. Additional requirements include the following:

- Verify in writing with the manufacturer that single-use liners used to collect each sample are made of a material that does not contain PFASs;
- Collect soil samples in laboratory-supplied HDPE bottles.
- Store the sample bottles in coolers and keep at a temperature of 0 to 6°C until transported to the laboratory.

7.2.1 Well Condition Survey/ Water Level Monitoring

Using equipment that has been thoroughly decontaminated according to the procedures in Section 7.1, conduct the well condition surveys and water level monitoring:

- Conduct monitoring well inspections and record water levels.
- Use an interface probe to evaluate presence/absence of non-aqueous phase liquid (NAPL).
- Measure the depth to water from the top of the polyvinyl chloride (PVC) riser and the total depth of the well.
- Record information in the field notes.

7.2.2 Monitoring Well Development and Purging

Follow these requirements for monitoring well development and purging:

- Do not use Teflon™ tubing for purging or sample collection. HDPE tubing is acceptable.
- Do not re-use materials between wells. Upon completion of use, remove all disposable materials (such as HDPE and/or silicone tubing) and place in heavy duty garbage bags for disposal.
- During development of the well, create sufficient energy to agitate the water column and create flow reversals in the well screen, filter pack and formation to loosen fine-grained materials and draw them into the well. The pumping or bailing action should then draw all drilling fluids and fine-grained material out of the borehole and adjacent formation and then out of the well. Review the Arcadis Monitoring Well Development guidance (Arcadis 2010) for more detailed information.
- Follow the low-flow purge and sampling techniques per the U.S. Protection Agency’s (EPA’s) guidance document titled *Low Stress (Low Flow) purging and Sampling Procedure for the Collection of Ground Water Samples from Monitoring Wells* (2010) and ASTM’s standard titled *Standard Practice for Low-Flow Purging and Sampling for Wells and Devices Used for Ground-Water Quality Investigations* (2002). Also available for review is the Arcadis Low-Flow Groundwater Purging and Sampling Procedures for Monitoring Wells (Arcadis 2011).

- To purge the well, if using HDPE tubing and a peristaltic pump, insert the end of the tubing to the approximate depth of the midpoint of the screened section of the monitoring wells. Measure the length of HDPE tubing to be inserted into each monitoring well and pre-cut it to approximate lengths (such as the previously measured arm span of a field technician) to avoid contact with any materials other than the monitoring well and peristaltic pump. Flow rates should be as low as can be reasonably achieved. Collect and appropriately dispose of purge water.
- Silicone tubing should direct the purge water through a flow-through cell for field parameter measurements of pH, conductivity, temperature, dissolved oxygen, and turbidity. Calibrate the instrument in the field prior to use. Decontaminate the instrument and flow-through cell at each monitoring well location before purging.
- Record field parameters in intervals (generally of 3-minute duration) to ensure purge water has cycled through the flow-through cell. Sample the wells after field parameter measurements indicate stabilization, which allows collection of representative formation water (generally acceptable standards are three consecutive pH readings to within ± 0.1 units, and three consecutive conductivity, temperature and dissolved oxygen measurements to within 3%). Turbidity must be monitored, but does not need to be used as a stabilization indicator of purge completion. Record field parameter measurements at each well. Drawdown should be monitored throughout the purge.
- If wells are suspected to be dewatering throughout the purge (i.e., reduced flow rate/difficulty pumping water or bubbles begin to come through the flow through cell), turn off the pump and allow the water level to recover for $\frac{1}{2}$ hour, followed by sample collection. Document these activities in the field notes.

7.3 Sample Collection

Different laboratories may supply sample collection bottles of varying sizes depending on the type of media to be sampled.

7.3.1 Sample Containers

- Collect samples in HDPE bottles fitted with an unlined (no Teflon™), polypropylene screw cap.
- Complete bottle labels after the caps have been placed back on each bottle.
- Do not use glass bottles due to potential loss of analyte through adsorption. This is particularly important for aqueous samples.
- Review with analytical lab the sample size, sample container, etc. depending upon the type of PFAS analysis that is being requested.

7.3.2 Soil Sampling

Before Sample Collection

- Place plastic sheeting adjacent to the sample port for use as a clean work area, if conditions allow. Otherwise, prevent sampling equipment from contacting the ground or other surface that could compromise sample integrity.
- Trowels or drilling equipment that will come into contact with a sample should be decontaminated prior to sample collection, preferably with methanol/isopropanol/acetone;
- Don a new set of nitrile gloves. Do not use gloved hands to subsequently handle papers, pens, clothes, etc., before collecting samples.
- Use the HDPE bottles that are supplied by the laboratory. Make sure that the caps remain on the bottle until immediately prior to sample collection.

Downloaded and printed copies from the Approved Procedure Library are uncontrolled documents.

During Sample Collection

- Collect soil samples using a clean stainless steel trowel or with single-use PFAS-free liners;
- Place soil samples in labeled HDPE bottles supplied by the laboratory.
- Note the time on the sample label.
- Collect any necessary duplicates/co-located samples and matrix spikes – verify with laboratory whether they need to be collected in separate sample bottles.
- Collect any necessary equipment blanks. The best timing to collect equipment blanks is immediately after the collection of a sample likely to contain high concentrations of PFASs, after the sampling equipment has been appropriately decontaminated.
- Collect any necessary field reagent blanks. This sample should be collected after field staff return from an offsite break (e.g., lunch) to capture any potential cross-contamination from field personnel.

After Sample Collection

- Place soil sample bottles in a sealed Ziploc[®] bag (optional).
- Record the label information and time of sampling in the field notes.
- Place soil sample bottles in coolers that are durable in transportation and keep the temperature between 0 and 6°C until transported to the laboratory. Do not use blue ice.

7.3.3 Groundwater Sampling

Before Sample Collection

- Place plastic sheeting adjacent to the sample port for use as a clean work area, if conditions allow. Otherwise, prevent sampling equipment from contacting the ground or other surface that could compromise sample integrity.
- Don a new set of nitrile gloves. Do not use gloved hands to subsequently handle papers, pens, clothes, etc., before collecting samples.
- Use the labeled HDPE bottles that are supplied by the laboratory. Make sure that the caps remain on the bottle until immediately prior to sample collection.
- Measure depth to water and field parameters. Turbidity and the physical appearance of the purged water should be noted on the Groundwater Sampling Log.

During Sample Collection

- Start groundwater sample collection upon stabilization of field parameters.
- If low-flow groundwater sampling techniques are being used, disconnect the silicone tubing from the flow-through cell, enabling collection of groundwater samples prior to passing through the cell.
- Hydrasleeves are also considered acceptable for sampling of PFAS in groundwater – consult the project manager to determine which technique should be used. In general, low flow sampling is preferable.
- Collect groundwater samples (to the neck of the bottle, some headspace is acceptable) from the dedicated sampling ports at the center of the well screen. While collecting the sample, make sure the bottle cap remains in the other hand of the sampler, until replaced on the bottle.
- To mitigate cross contamination, collect groundwater samples in a pre-determined order from least impacted to greater impacted based on previous analytical data or knowledge about past activities at the site. If no analytical data are available, samples are to be collected in the following order:
 1. First sample the upgradient well(s).

2. Next, sample the well located furthest downgradient of the interpreted or known source.
 3. The remaining wells should be progressively sampled in order from downgradient to upgradient, such that the wells closest to the interpreted or known source are sampled last.
- NOTE: If high concentrations of PFASs related to class B firefighting foams are expected in a groundwater sample, conduct a Shaker test by collecting and shaking a small portion of the sample (~10 to 25 mL) on site in a small disposable vial. If foaming is noted within the sample, document the foaming when samples are submitted for analysis; the 'shaker test' vial can then be disposed. This shaker test provides information about how each of the samples should be handled analytically.
 - After collecting the sample, tightly screw on the polypropylene cap (snug, but not too tight). This will minimize leaking or cross contamination of the sample. Most PFASs, including all analytes measured by USEPA Method 537, are not volatile at environmental pH.
 - Note the time on the sample label.
 - Collect any necessary duplicates and matrix spikes. As the laboratory should be analyzing the entire aqueous sample rather than sub-sampling, separate bottles will be required for these samples.
 - Collect any necessary equipment blanks. The best timing to collect equipment blanks is immediately after the collection of a sample likely to contain high concentrations of PFASs, after the sampling equipment has been appropriately decontaminated.
 - Collect any necessary field reagent blanks. This sample should be collected after field staff return from an offsite break (e.g., lunch) to capture any potential cross-contamination from field personnel.
 - Do not rinse PFAS sample bottles during sampling. Do not filter samples.

After Sample Collection

- Place groundwater sample bottles in a sealed Ziploc[®] bag (optional).
- Record the label information and time of sampling in the field notes and COC. Note 'shake test' results if appropriate.
- Place groundwater samples in coolers that are durable in transportation and keep the temperature between 0 and 6°C until transported to the laboratory. **Do not use blue ice. Store PFAS samples in a separate cooler from other types of samples.**
- Treat all disposable sampling materials as single use and dispose of them appropriately after sampling at each monitoring well.

7.3.4 Sediment Sampling

Before Sample Collection

- Place plastic sheeting (preferably HDPE) adjacent to the sample port for use as a clean work area, if conditions allow. Otherwise, prevent sampling equipment from contacting the ground or other surface that could compromise sample integrity.
- Don a new set of nitrile gloves. Do not use gloved hands to subsequently handle papers, pens, clothes, etc., before collecting samples.
- Use the HDPE bottles that are supplied by the laboratory. Make sure that the caps remain on the bottle until immediately prior to sample collection.

During Sample Collection

- Where surface water samples and sediment samples are collected at the same location, collect surface water samples first to minimize siltation.

- Collect sediment samples either manually using a stainless steel trowel or using a petite ponar grab sampler, depending on field conditions at each sampling location during sampling program.
- Collect sediment samples from the upper 10 cm of sediment.
- For a sample to be acceptable overlying, low turbidity water must be present.
- Decant the overlying water and use a stainless steel trowel to collect only the upper 5 centimeters (cm) of sediment.
- Collect sediment samples directly into laboratory-supplied bottles that are suitable in both material and size.
- Do not overfill the sample bottle.
- Make sure that the sample does not contain vegetation, that the sediment is undisturbed, and that the sampler shows no signs of winnowing or leaking.
- Make sure bottle caps remain in the gloved hand of the sampler until sampling is complete and caps are replaced on the bottle.
- Note the time on the sample label.
- Collect any necessary duplicates and matrix spikes.
- Collect any necessary equipment blanks. The best timing to collect equipment blanks is immediately after the collection of a sample likely to contain high concentrations of PFASs, after the sampling equipment has been appropriately decontaminated.
- Collect any necessary field reagent blanks. This sample should be collected after field staff return from an offsite break (e.g., lunch) to capture any potential cross-contamination from field personnel.

After Sample Collection

- Place sample bottles in a sealed Ziploc® bag (optional).
- Record the label information and time of sampling in the field notes.
- Place samples in coolers that are durable in transportation and keep the temperature between 0 and 6°C until transported to the laboratory. **Do not use blue ice. Store PFAS samples in a separate cooler from other types of samples.**
- Measure surface water pH, conductivity, temperature, and total dissolved solids (TDS) at each location **after** both surface water and sediment sampling is completed.

7.3.5 Surface Water Sampling

Before Sample Collection

- Place plastic sheeting (preferably HDPE) adjacent to the sample port for use as a clean work area, if conditions allow. Otherwise, prevent sampling equipment from contacting the ground or other surface that could compromise sample integrity.
- Don a new set of nitrile gloves. Do not use gloved hands to subsequently handle papers, pens, clothes, etc., before collecting samples.
- Use the HDPE bottles that are supplied by the laboratory. Make sure that the caps remain on the bottle until immediately prior to sample collection.

During Sample Collection

- Avoid sampling the surface.
- Where surface water samples and sediment samples are collected at the same location, collect surface water samples first to minimize siltation.

- Collect surface water samples directly into laboratory-supplied bottles; wide-mouth bottles may be preferable to narrow mouth bottles for ease of surface water collection.
- Make sure bottle caps remain in the gloved hand of the sampler until sampling is complete and caps are replaced on the bottle.
- Note the time on the sample bottle.
- Collect any necessary duplicates and matrix spikes. As the laboratory should be analyzing the entire aqueous sample rather than sub-sampling, separate bottles will be required for these samples.
- Collect any necessary equipment blanks. The best timing to collect equipment blanks is immediately after the collection of a sample likely to contain high concentrations of PFASs, after the sampling equipment has been appropriately decontaminated.
- Collect any necessary field reagent blanks. This sample should be collected after field staff return from an offsite break (e.g., lunch) to capture any potential cross-contamination from field personnel.

After Sample Collection

- Place sample bottles in a sealed Ziploc® bag (optional).
- Record the label information and time of sampling in the field notes.
- Place samples in coolers that are durable in transportation and keep the temperature between 0 and 6°C until transported to the laboratory. **Do not use blue ice. Store PFAS samples in a separate cooler from other types of samples.**
- Measure surface water pH, conductivity, temperature, and TDS at each location **after** both surface water and sediment sampling.

7.4 Shipping

- If samples cannot be shipped the same day as collected, arrange an appropriate means of keeping the samples cool overnight and maintain the temperature between 0 and 10°C for the first 48 hours after collection, and then between 0 and 6°C thereafter.
- Store samples in appropriate transport bottles (coolers) with ice (Ziploc® bags for use as ice containers) with appropriate labeling. **Do not use blue ice. Store PFAS samples in a separate cooler from other types of samples.**
- Complete the appropriate procedures for COC, handling, packing, and shipping.
- Fill out and check COC Forms against the labels on the sample bottles progressively after each sample is collected.
- Place all disposable sampling materials (such as plastic sheeting, and health and safety equipment) in appropriate containers.
- Ship samples via courier service with priority overnight delivery. Tracking numbers for all shipments should be provided and recorded after they have been sent out to ensure their timely delivery.
- Do not ship samples via Fed Ex for Saturday delivery.

8 WASTE MANAGEMENT

All rinsate should be collected in a sealed pail for disposal. Drill cuttings and purge water will be managed as specified in the Field Sampling Plan (FSP) or Work Plan, and according to state and/or federal requirements. PPE and decontaminated fluids will be contained separately and staged at the sampling location. Containers must be labeled at the time of collection. Labels will include date, location(s), site

name, city, state, and description of matrix contained (e.g., soil, groundwater, PPE). General guidelines for investigation derived waste (IDW) handling and storage are set forth in a separate IDW guidance document (Arcadis 2009).

Typical waste characterization procedures include collection of a composite sample of the drill cutting material and a composite sample of the purge water for laboratory analysis. Samples are typically analyzed for disposal toxicity characteristic leaching procedure (TCLP) analysis for metals and VOCs. For PFASs, a simple leach test with neutral pH water may be more indicative of actual risk. Additionally, generators of waste are required to include analysis of other constituents that are reasonably believed to be present including (in this case) PFASs.

Emerging contaminants pose a unique challenge for disposal because acceptance of such waste will be based on the local facility and their permit restrictions. Project teams will be required to identify appropriate facilities based on the facility's legal ability to accept the waste and the team should confirm that the facility is meeting the regulatory requirements for accepting waste containing PFASs. In general, facilities that provide solidification and/or incineration will be likely to meet the necessary requirements to accept PFAS-containing waste. The facility will then provide the definitive laboratory analysis requirements needed to meet their permit requirements for waste classification.

9 DATA RECORDING AND MANAGEMENT

9.1 Field Notes

Waterproof field books must not be used for field notes. Instead, field notes should be on loose paper on Masonite, plastic, or aluminum clip boards. Other requirements for field notes include:

- Pens, pencils, and Sharpies may be used.
- Keep field notes and writing implements away from samples and sampling materials.
- One person should conduct sampling while another records field notes.
- Do not write on sampling bottles unless they are closed.

9.2 Other Project Documentation

- Complete Groundwater Sampling Logs.
- Make sure COC Forms are properly completed. Verify which PFAS analytes (e.g., just PFOS and PFOA, some or all of the 537 list, etc.) are required for analysis and note on the COC.

10 QUALITY CONTROL

Refer to quality control requirements for the project to ensure that appropriate quality assurance and quality control (QA/QC) samples are collected. When collecting QA/QC samples, the same guidelines apply as when collecting regular samples – specifically that:

- Samples should be collected in laboratory-supplied HDPE bottles;
- Bottle caps must remain in the hand of the sampler until replaced on the bottle;
- Labels must be completed after the caps have been placed back on each bottle; and

- Samples must be stored in appropriate transport bottles (coolers) with ice (Ziploc® bags for use as ice containers) with appropriate labeling. **Do not use blue ice. Store PFAS samples in a separate cooler from other types of samples.**

10.1 Equipment Blanks (if relevant)

QA/QC sampling typically includes daily collection of equipment blanks using the laboratory-supplied “PFAS-free” water. For peristaltic pump tubing, laboratory supplied “PFAS-free” water should be poured into a clean HDPE sample bottle and then pumped through new HDPE tubing using the peristaltic pump (with new silicone tubing). The best timing to collect equipment blanks is immediately after the collection of a sample likely to contain high concentrations of PFASs, after the sampling equipment has been appropriately decontaminated.

10.2 Field Duplicates

QA/QC sampling typically includes the collection of one field duplicate for every 10 or 20 samples collected. Each duplicate sample will be collected immediately after the initial sample of which it is a duplicate into a separate laboratory-provided sample bottle. Do not indicate to the laboratory which sample the duplicate replicates, i.e. it should be given a blind reference on the COC and sample name such as “duplicate”.

10.3 Field Reagent Blanks

QA/QC sampling for PFASs typically includes the submission of one laboratory supplied field reagent blank per day. The field reagent blank sample is brought to the site in a laboratory-supplied sample bottle. Field staff transfer the laboratory-supplied reagent blank to an empty sample bottle. This sample should be collected after field staff return from an offsite break (e.g., lunch) to capture any potential cross-contamination from field personnel and should be placed in the same cooler as the other PFAS samples.

10.4 Matrix Spikes (optional in some cases)

QA/QC sampling includes submitting a sample to be used as a matrix spike if the project requires it. If a separate sample bottle is required, an additional sample will be collected immediately after the initial sample of which it is a duplicate into a separate laboratory-supplied sample bottle.

10.5 Laboratory Analytical QA/QC

- Arcadis recommends that any request for PFAS analysis in groundwater or soil should be conducted by an ELAP-accredited method compliant with QSM 5.1 Table B-15. Requirements laid out in Table B-15 strictly govern acceptable laboratory data quality for PFAS analysis in environmental samples. **For all data collection efforts at DoD sites, PFAS data must be obtained using a method that is DoD ELAP-accredited under QSM 5.1 or later.**
- Laboratory QA/QC should consist of one laboratory blank and one laboratory control sample (or blank spike) per batch of samples, and additional QA/QCs as indicated by the laboratory QA/QC procedures.
- Isotope dilution should be used for quantification with isotope-labeled surrogate standards, as available, according to the guidelines of QSM 5.1 Table B-15. USEPA Method 537 does not allow for isotope dilution in their PFAS drinking water method.

- For drinking water, groundwater, and surface water samples, laboratories must extract the entire sample and include a solvent rinse of the bottle for analysis. Aqueous samples should generally not be sub-sampled prior to analysis, unless they are high concentration and require serial dilution (US DoD 2017).
- Soil samples should be analyzed in their entirety or thoroughly homogenized before extraction and analysis.
- As part of the internal QA/QC of laboratory results, relative percent difference (RPD) should be calculated between samples and corresponding field or laboratory duplicates. The laboratory quality assurance portion of the laboratory certificates should be reviewed to verify that all calculations/recoveries were within acceptable limits as established by the laboratory method and guidelines in Table B-15 of QSM 5.1 or later (USDoD 2017).

11 REFERENCES

Arcadis Australia. 2017. Soil and Concrete Sampling for PFAS. April.

Arcadis. 2010. Monitoring Well Development, Rev. #2.2. March 22.

Arcadis. 2009. Investigation-Derived Waste Handling and Storage, Rev. #2. March 6.

Arcadis. 2011. Low-Flow Groundwater Purging and Sampling Procedures for Monitoring Wells, Rev. #4. February 2.

ASTM. 2002. ASTM D6771-02 - Standard Practice for Low-Flow Purging and Sampling for Wells and Devices Used for Ground-Water Quality Investigations (Withdrawn 2011). Available at: <https://www.astm.org/Standards/D6771.htm>.

Department of Environment Regulation (DER). Government of Western Australia. 2016. Interim Guideline on the Assessment and Management of Perfluoroalkyl and Polyfluoroalkyl Substances (PFAS). Contaminated Sites Guidelines. February.

Massachusetts Department of Environmental Protection (MassDEP). 2017. DRAFT Fact Sheet, Guidance on Sampling and Analysis for PFAS at Disposal Sites Regulated under the Massachusetts Contingency Plan. January.

New Hampshire Department of Environmental Services (NHDES). 2016. Perfluorinated Compound (PFC) Sample Collection Guidance. November.

United Nations Environment Programme (UNEP). 2015. PFAS analysis in water for the Global Monitoring Plan of the Stockholm Convention, Set-up and guidelines for monitoring. Jana Weiss, Jacob de Boer, Urs Berger, Derek Muir, Ting Ruan, Alejandra Torre, Foppe Smedes, Branislav Vrana, Fabrice Clavient, and Heidelore Fiedler. Division of Technology, Industry and Economics. Geneva. April.

United States Army Corps of Engineers (USACE). 2016. DRAFT – Standard Operating Procedure 047: Per/Poly Fluorinated Alkyl Substances (PFAS) Field Sampling. Revision: 1. March.

U.S. Army Corps of Engineers – Omaha District. 2016. Chemistry Requirements – PFAS.

U.S. Department of Defense (DoD). 2017. Consolidated Quality Systems Manual (QSM) for Environmental Laboratories, Version 5.1. In conjunction with the U.S. Department of Energy. January.

U.S. Environmental Protection Agency. 2009. USEPA Method 537: Determination of Selected Perfluorinated Alkyl Acids in Drinking Water by Solid Phase Extraction and Liquid Chromatography/Tandem Mass Spectrometry (LC/MS/MS), version 1.1, September. National Exposure Research Laboratory, Office of Research and Development.

U.S. Environmental Protection Agency. 2010. Low Stress (Low Flow) purging and Sampling Procedure for the Collection of Ground Water Samples from Monitoring Wells. Available at:

[Downloaded and printed copies from the Approved Procedure Library are uncontrolled documents.](#)

POLY- AND PERFLUORINATED ALKYL SUBSTANCES (PFAS) FIELD SAMPLING GUIDANCE

Rev Date: March 26, 2019

<https://www.epa.gov/quality/low-stress-low-flow-purging-and-sampling-procedure-collection-groundwater-samples-monitoring>.

Transport Canada. February 2016, Per-and Polyfluorinated Alkyl Substances (PFAS) Field Sampling Guidance.