



September 14, 2006

James F. Hartnett
Remediation and Liability Management Company, Inc.
1 General Motors Drive
Suite 2
Syracuse, New York 13206-1127

Re: Ley Creek PCB Dredgings Site
July 2006 OM&M Inspection

File: 4966/34124 #2

Dear Jim:

This letter documents the Operation, Maintenance, and Monitoring (OM&M) site inspection conducted on July 19, 2006 by O'Brien & Gere at the Ley Creek PCB Dredgings Site (the Site), located in Syracuse, New York. This inspection was performed in accordance with the NYSDEC-approved OM&M Manual, dated September 2001.

SITE INSPECTION

On July 19, 2006, an OM&M site inspection was performed at the Site. The inspection checklist with comments is attached. The inspection photographs are also attached with descriptions of the photographs. The approximate locations of where the photographs were taken are shown in the attached site figures with corresponding photograph numbers.

The following outstanding issues have been observed during previous site inspections:

- Rutting of the stone access road (Figures 2, 3, and 4)
- Exposed erosion control fabric along overflow spillway from CB -3 (Figure 3, Photograph 20)
- A significant amount of vegetation within the stone access road throughout the Site (Photograph 3)
- Tree establishment along the fence line and between the access road and Ley Creek (Figures 1 through 5, Photographs 10 and 17)
- Vegetation through pavement/cracks in asphalt and damage to asphalt (Figure 3)
- Delineation of the wetland area with signage.

James F. Hartnett
September 14, 2006
Page 2

Additional issues observed during the July 2006 inspection are as follows:

- Clogged catch basins CB-1, CB-2 and partially clogged CB-3 (Figures 1 and 3, Photographs 5, 14, and 18)
- Further tree/shrub establishment and growth, some trees approximately 2" in diameter (Figures 1 through 5, Photographs 10 and 17)
- Animal burrow in vegetative cover and buried monitoring well MW-12 (Figure 2, Photograph 13)
- Monitoring well OBG-21D lock broken and J-plug not in PVC riser (Figure 4, Photograph 21)
- Monitoring well OBG-3D concrete flush-mount casing shifted (Figure 5, Photograph 23)
- Erosion where CB-1 overflow spillway crosses access road (Figure 1, Photograph 8 and 9)
- Exposed soil with no vegetation in CB-2 overflow spillway near access road (Figure 3, Photograph 15)
- Concrete rubble near Factory Avenue (Figure 3) and garbage near CB-1 (Photograph 6)
- Organic debris scattered throughout Site due to recent flooding (Photographs 4, 11, 21, and 22)
- Garbage box of used oil (Figure 4)
- Significant vegetation growth along Factory Avenue site perimeter fence and within the Site in general (Figures 1, 2, and 3, Photograph 1).

The next semi-annual OM&M inspection is scheduled to occur October 2nd or 3rd of 2006.

If you should have any questions pertaining to the information presented in this letter, please feel free to contact me at (315) 437-6100.

Very truly yours,

O'BRIEN & GERE ENGINEERS, INC.



Bradley A. Kubiak, P.E.
Senior Project Engineer

I:\DIV71\Projects\4966\34124\2_corres\Client\July 2006 OM&M Inspection\jh OMM ltr 091406.doc

cc: Douglas Crawford, P.E.
Maureen Markert, P.E.
Nick Wobbrock

Inspection checklist

Date Performed: July 19, 2006			Weather: Sunny 80 F	
Site Name: Ley Creek PCB Dredgings Site			Inspector Name: Brad Kubiak and Nick Wobbrock	
Site Location: Syracuse, New York			Inspector Signature: <i>Brad Kubiak</i> / <i>Nick Wobbrock</i>	
Item	Task	Response		Comments
		Yes	No	
Vegetative Cover	Visually inspect surface conditions.			
	1. Areas of settlement?		X	
	2. Areas of erosion?	X		Exposed soil with no vegetation in CB-2 overflow spillway near access road (Figure 3, Photograph 15).
	3. Areas where geotextile visible due to erosion?	X		Refer to Photographs 9 and 20, Figures 1 and 3.
	4. Areas of slope instability?		X	
	5. Lack or thinning vegetation?		X	
	6. Presence of burrowing animals?	X		Near MW-12, refer to Photograph 13 and Figure 2.
	7. Areas of damage?		X	
	8. Drainage problems?	X		CB-1 and CB-2 plugged, CB-3 partially plugged (Figures 1 and 3, Photographs 5, 14, and 18).
	9. Mowing required?	X		
Access Road	Visually inspect conditions.			
	1. Areas of settlement?		X	

Inspection checklist

Date Performed: July 19, 2006			Weather: Sunny 80 F	
Site Name: Ley Creek PCB Dredgings Site			Inspector Name: Brad Kubiak and Nick Wobbrock	
Site Location: Syracuse, New York			Inspector Signature: <i>Bradley Kubiak / Nick Wobbrock</i>	
Item	Task	Response		Comments
		Yes	No	
Access Road	2. Areas of erosion?	X		Minimally where CB-1 overflow spillway crosses access road (Figure 1, Photograph 8 and 9).
	3. Areas rutted or potholes present?	X		Figures 2, 3, and 4.
	4. Areas of damage?		X	
Surface Water Drainage	Visually inspect ditches, catch basins, etc.			
	1. Accumulation of debris?	X		Due to recent flooding contributing to clogged catch basins (Fig. 1, 3, and 4, Photo. 5, 14, and 18).
	2. Excessive scouring?		X	
	3. Areas of damage?		X	
Ground Water Wells	Visually inspect conditions.			
	1. Casings secure and locked?		X	OBG-21D lock damaged and missing J-plug (Fig. 4, Photo. 21), OBG-3D flush mount shifted (Fig. 5, Photo. 23).
	2. Areas of damage?	X		MW-12 buried due to adjacent burrow (Figure 2, Photograph 13).
Sanitary sewer access paths	Visually inspect conditions.			
	1. Cracks in asphalt?	X		Refer to Figure 3.
	2. Manhole covers in place?	X		

Inspection checklist

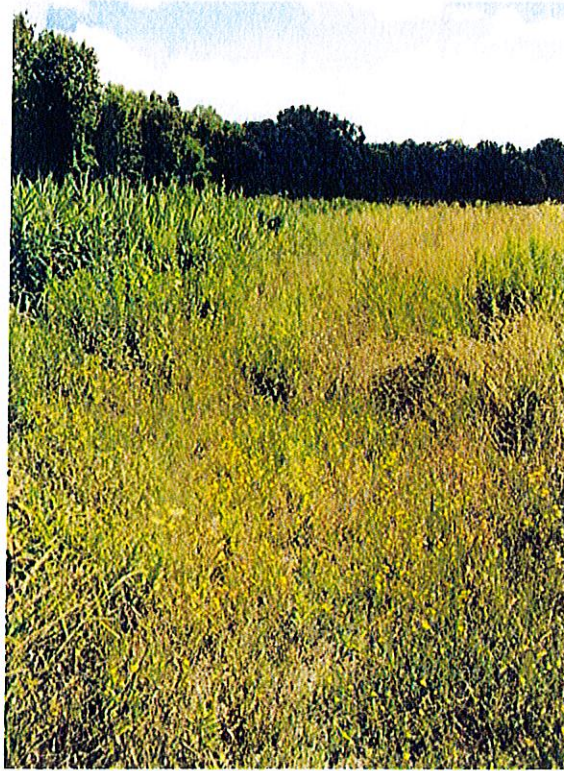
Date Performed: July 19, 2006		Weather: Sunny 80 F		
Site Name: Ley Creek PCB Dredgings Site		Inspector Name: Brad Kubiak and Nick Wobbrock		
Site Location: Syracuse, New York		Inspector Signature: <i>Bradley K. Kubiak / Nick Wobbrock</i>		
Item	Task	Response		Comments
		Yes	No	
Sanitary sewer access paths	3. Debris accumulating in access paths?		X	
	Visually inspect fences and gates			
Physical Site Security	1. Signs intact?	X		
	2. Fence breached?		X	
	3. Access gates locked?	X		
	4. Areas of damage?		X	
Note any additional comments.				
Significant vegetation within the stone access road throughout the Site (Photograph 3).				
Significant vegetation growth along Factory Avenue site perimeter fence (Figures 1, 2, and 3, Photograph 1).				
Organic debris within vegetative cover (Figures 1, 2, 3, and 4, Photographs 4, 11, 21, and 22).				



Photograph 1: Looking at west entrance gate vegetation growth.



Photograph 2: View near west entrance looking east down site parallel to Factory Avenue.



Photograph 3: View down site access road approximately 140' from west access gate.



Photograph 4: Organic debris from flooding south of access road adjacent to Ley Creek.



Photograph 5: Stagnant water in CB-1 indicates clogging.



Photograph 6: Garbage near CB-1.



Photograph 7: View looking east of CB-1 overflow spillway showing significant vegetation.



Photograph 8: Erosion in CB-1 overflow spillway along access road.



Photograph 9: Woven geotextile exposed due to erosion where CB-1 overflow spillway crosses access road.



Photograph 10: Tree establishment.



Photograph 11: View of organic debris from flooding.



Photograph 12: View looking east from MW-12.



Photograph 13: View of burrow near MW-12. MW-12 buried and not identified.



Photograph 14: Stagnant water in CB-2 indicates clogging.



Photograph 15: View of soil with no vegetation in CB-2 overflow spillway near access road.



Photograph 16: View looking east from CB-2 overflow spillway.



Photograph 17: Tree establishment between access road and Ley Creek.



Photograph 18: CB-3 partially clogged.



Paragraph 19: View looking east near CB-3 overflow spillway.



Photograph 20: Exposed geotextile fabric due to erosion along CB-3 overflow spillway.



Photograph 21: Organic debris from flooding around OBG-21D.



Photograph 22: Organic debris from flooding.



Photograph 23: OBG-3D flush mount casing appears moved.



Photograph 24: Overflow spillway CB-4.



Photograph 25: View of CB-5.



Photograph 26: View from east end of site looking west parallel to Factory Avenue.

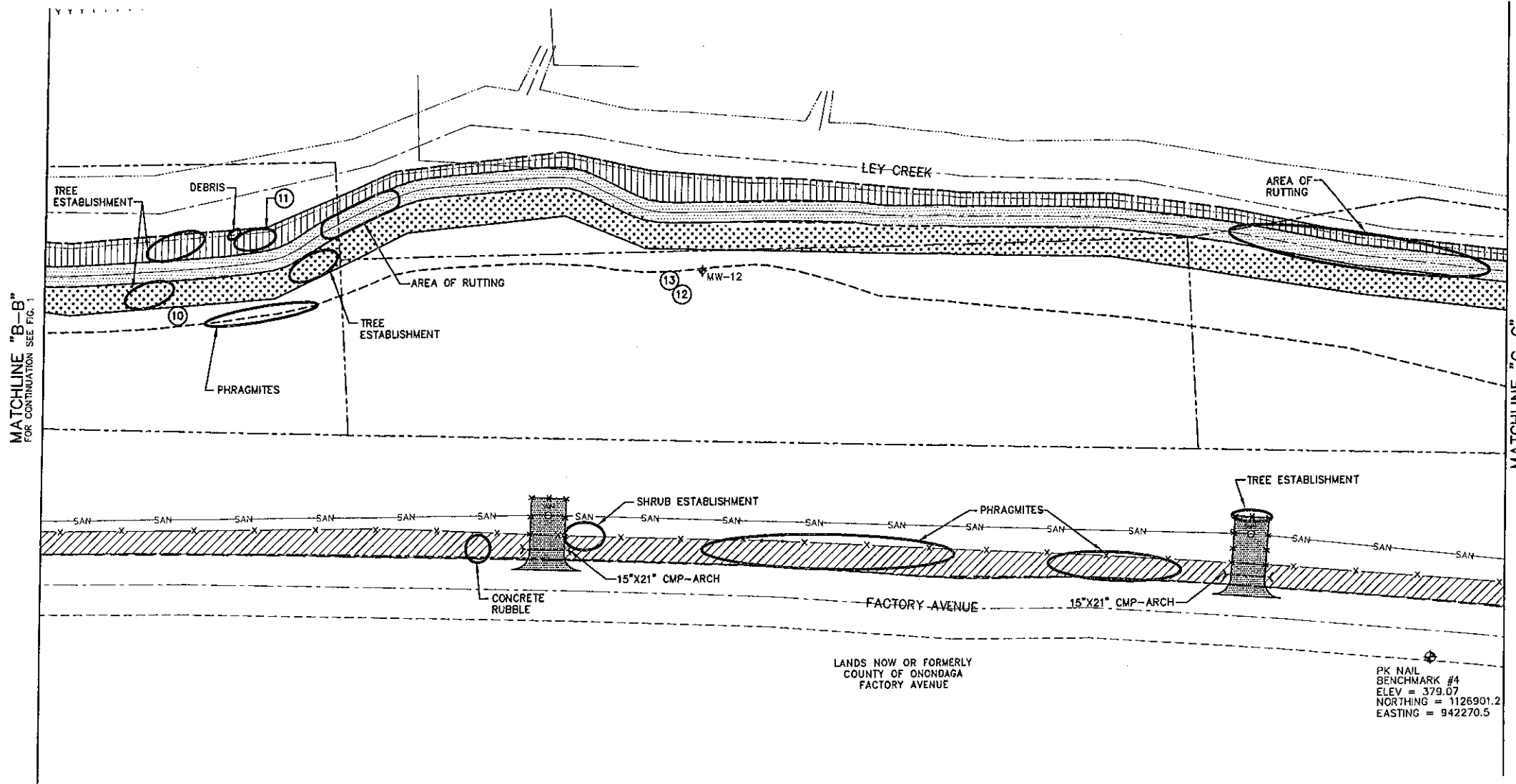


Photograph 27: Access road entrance from east end of site.

Sep 12, 2006 - 1:43pm

I:\DW71\Projects\4966\34124\Drawings\Figures\34124-036.DWG

FIGURE 2



MATCHLINE "B-B"
FOR CONTINUATION SEE FIG. 1

MATCHLINE "C-C"
FOR CONTINUATION SEE FIG. 3



- LEGEND**
- SEEDED WITH CANARY GRASS
 - OVERHEAD WIRES
 - PROPERTY BOUNDARY
 - EDGE OF WOODS
 - UTILITY POLE
 - GUY WIRE
 - SANITARY SEWER
 - SANITARY MANHOLE
 - CATCH BASIN
 - SECURITY FENCE (SEE GENERAL NOTE 4)
 - PAVEMENT
 - GRAVEL ACCESS ROAD
 - LIMITS OF SOIL LOCATED ALONG FACTORY AVENUE RELOCATED BENEATH COVER SYSTEM
 - CATCH BASIN
 - MODIFIED MONITORING WELL
 - MONITORING WELL PRESUMED DESTROYED
 - ABANDONED MONITORING WELL
 - NEW MONITORING WELL
 - LIMITS OF EROSION CONTROL MAT
 - LIMITS OF COVER SYSTEM
 - LIMITS OF NON-WOVEN GEOTEXTILE
 - PHOTOGRAPH LOCATION

LEY CREEK PCB DREDGINGS SITE
SYRACUSE, NEW YORK
SITE REMEDIATION PROJECT

JULY 2006
OM&M INSPECTION
PARTIAL SITE PLAN

1" = 40'

FILE NO. 4966.34124.042
SEPTEMBER 2006



Sep 12, 2006 - 1:43pm

D:\71\Projects\4966\34124\Drawings\Figures\34124-036.DWG

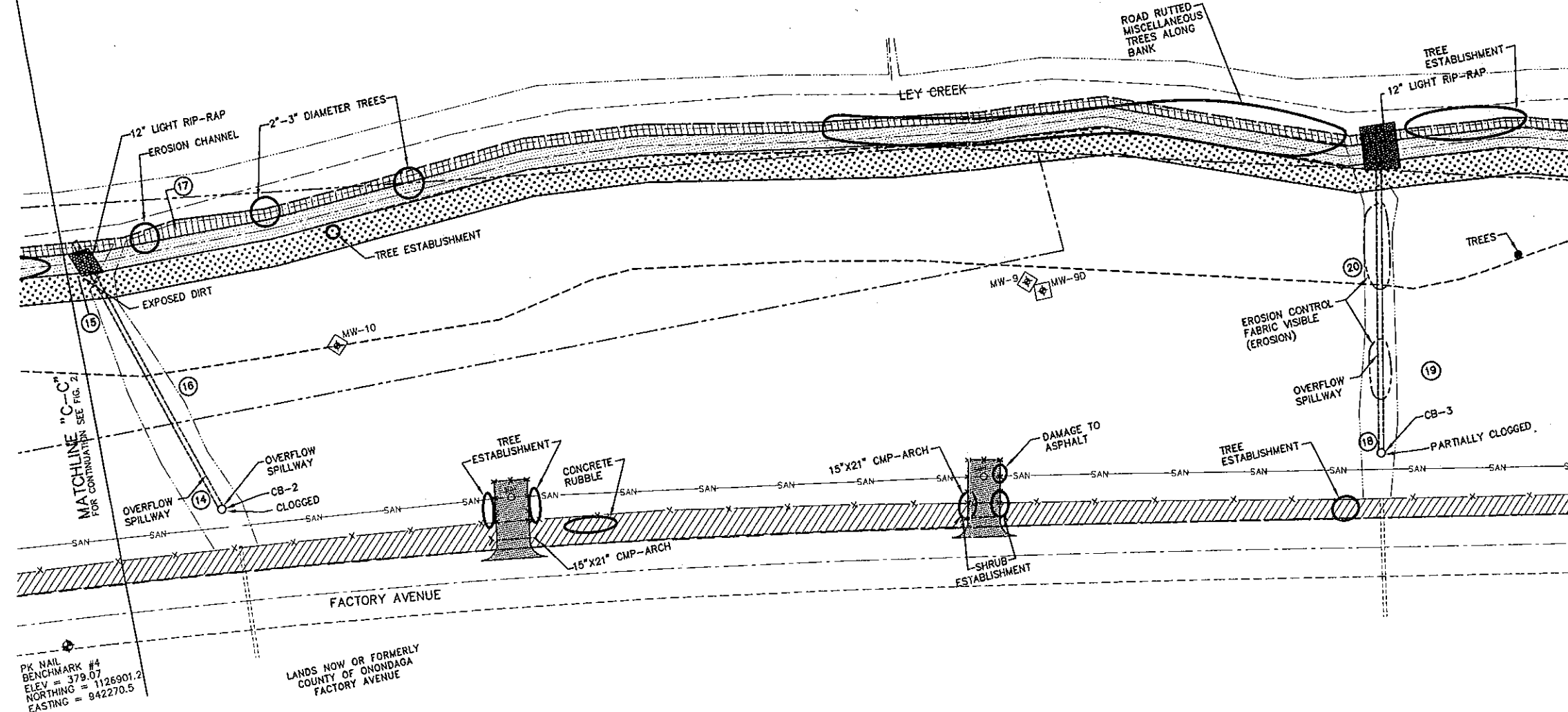


FIGURE 3

LEGEND

- SEEDED WITH CANARY GRASS
- OVERHEAD WIRES
- PROPERTY BOUNDARY
- EDGE OF WOODS
- UTILITY POLE
- GUY WIRE
- SANITARY SEWER
- SANITARY MANHOLE
- CATCH BASIN
- SECURITY FENCE (SEE GENERAL NOTE 4)
- PAVEMENT
- GRAVEL ACCESS ROAD
- LIMITS OF SOIL LOCATED ALONG FACTORY AVENUE RELOCATED BENEATH COVER SYSTEM
- CATCH BASIN
- MODIFIED MONITORING WELL
- MONITORING WELL PRESUMED DESTROYED
- ABANDONED MONITORING WELL
- NEW MONITORING WELL
- LIMITS OF EROSION CONTROL MAT
- LIMITS OF COVER SYSTEM
- LIMITS OF NON-WOVEN GEOTEXTILE
- PHOTOGRAPH LOCATION

LEY CREEK PCB DREDGINGS SITE
SYRACUSE, NEW YORK
SITE REMEDIATION PROJECT

JULY 2006
OM&M INSPECTION
PARTIAL SITE PLAN



FILE NO. 4966.34124.043
SEPTEMBER 2006

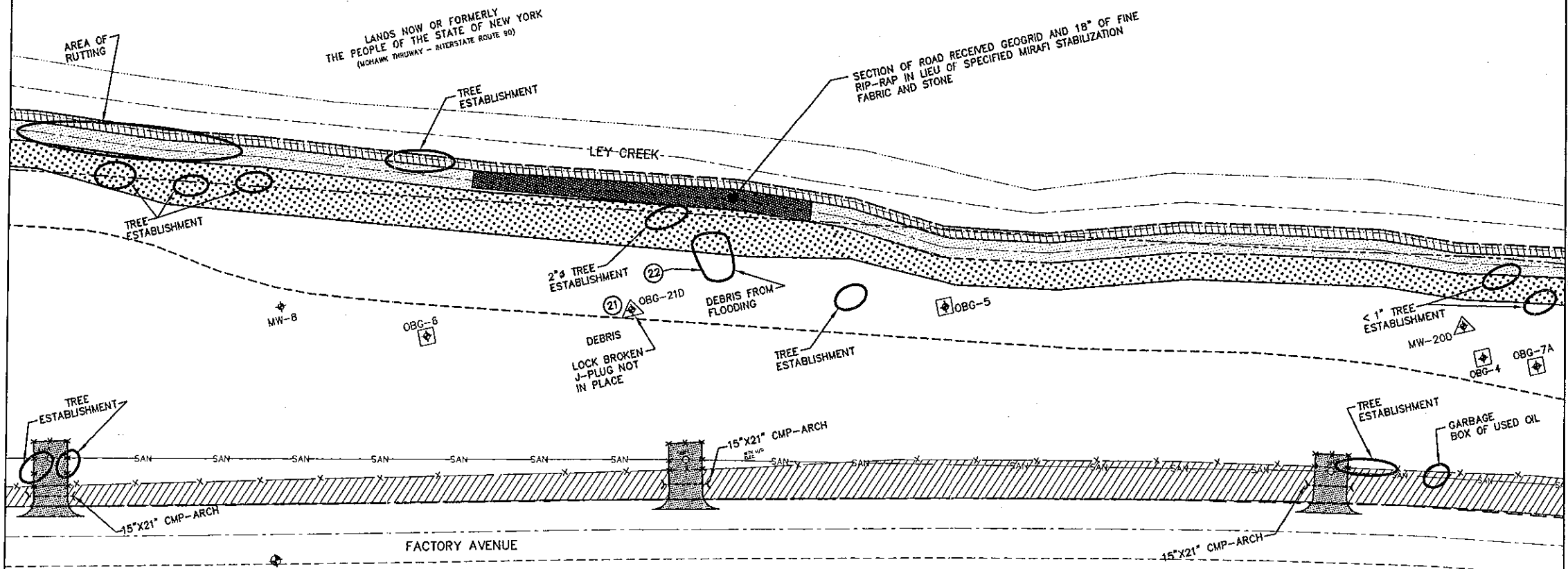


Sep 12, 2006 - 1:42pm

\\D:\71\Projects\4966\34124\Drawings\Figures\34124-036.DWG

MATCHLINE "D-D"
FOR CONTINUATION SEE FIG. 3

MATCHLINE "E-E"
FOR CONTINUATION SEE FIG. 5



PK NAIL
BENCHMARK #3
ELEV = 378.89
NORTHING = 1126717.1
EASTING = 943351.0

FIGURE 4

- LEGEND**
- SEEDED WITH CANARY GRASS
 - OVERHEAD WIRES
 - PROPERTY BOUNDARY
 - EDGE OF WOODS
 - UTILITY POLE
 - GUY WIRE
 - SANITARY SEWER
 - SANITARY MANHOLE
 - CATCH BASIN
 - SECURITY FENCE (SEE GENERAL NOTE 4)
 - PAVEMENT
 - GRAVEL ACCESS ROAD
 - LIMITS OF SOIL LOCATED ALONG FACTORY AVENUE RELOCATED BENEATH COVER SYSTEM
 - CATCH BASIN
 - MODIFIED MONITORING WELL
 - MONITORING WELL PRESUMED DESTROYED
 - ABANDONED MONITORING WELL
 - NEW MONITORING WELL
 - LIMITS OF EROSION CONTROL MAT
 - LIMITS OF COVER SYSTEM
 - LIMITS OF NON-WOVEN GEOTEXTILE
 - PHOTOGRAPH LOCATION

LEY CREEK PCB DREDGINGS SITE
SYRACUSE, NEW YORK
SITE REMEDIATION PROJECT

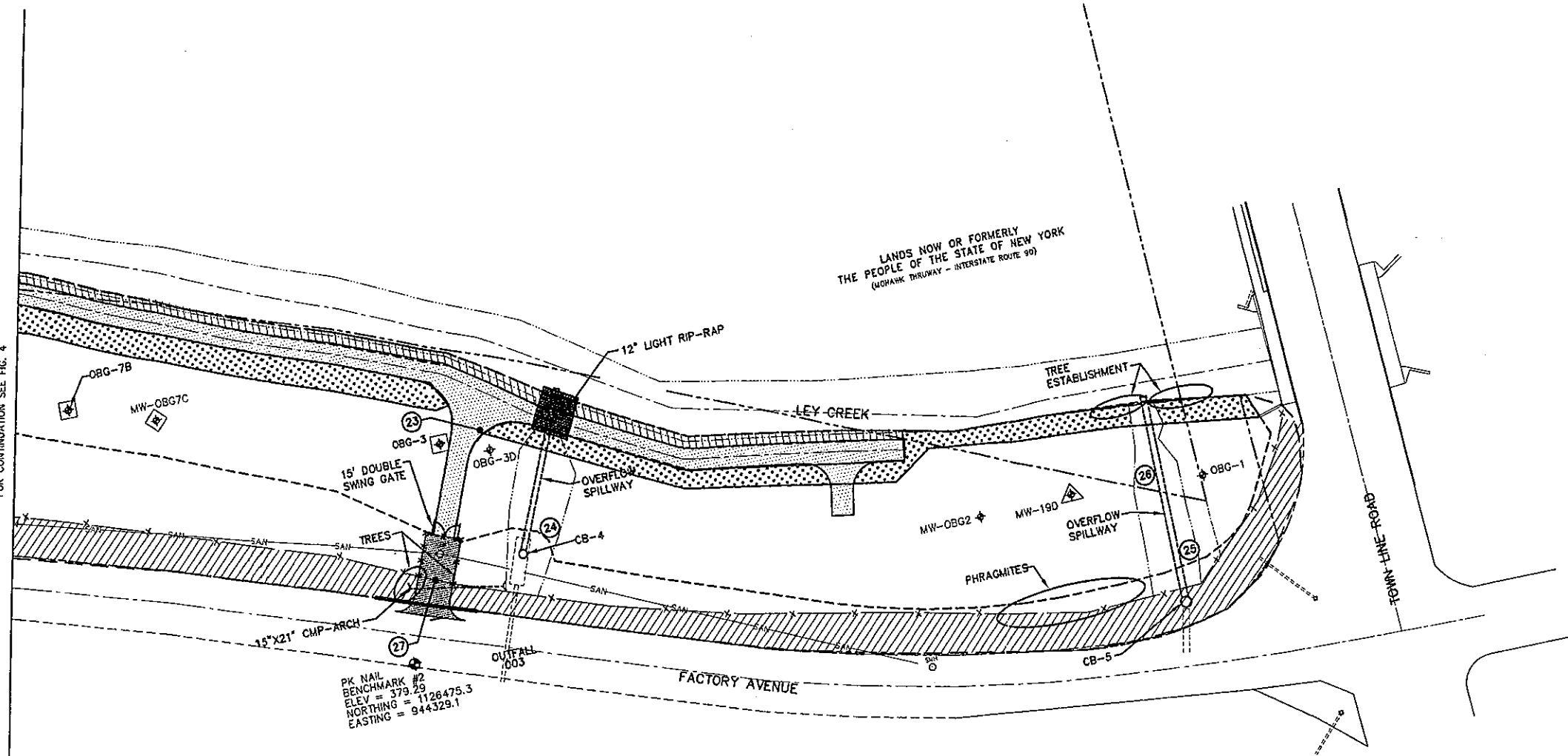
JULY 2006
OM&M INSPECTION
PARTIAL SITE PLAN



FILE NO. 4966.34124.044
SEPTEMBER 2006



MATCHLINE "E-E"
FOR CONTINUATION SEE FIG. 4



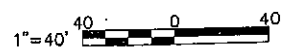
PK NAIL
BENCHMARK #2
ELEV = 379.29
NORTHING = 1126475.3
EASTING = 944329.1

FIGURE 5

- LEGEND**
- SEEDING WITH CANARY GRASS
 - OVERHEAD WIRES
 - PROPERTY BOUNDARY
 - EDGE OF WOODS
 - UTILITY POLE
 - GUY WIRE
 - SANITARY SEWER
 - SANITARY MANHOLE
 - CATCH BASIN
 - SECURITY FENCE (SEE GENERAL NOTE 4)
 - PAVEMENT
 - GRAVEL ACCESS ROAD
 - LIMITS OF SOIL LOCATED ALONG FACTORY AVENUE RELOCATED BENEATH COVER SYSTEM
 - CATCH BASIN
 - MODIFIED MONITORING WELL
 - MONITORING WELL PRESUMED DESTROYED
 - ABANDONED MONITORING WELL
 - NEW MONITORING WELL
 - LIMITS OF EROSION CONTROL MAT
 - LIMITS OF COVER SYSTEM
 - LIMITS OF NON-WOVEN GEOTEXTILE
 - PHOTOGRAPH LOCATION

LEY CREEK PCB DREDGINGS SITE
SYRACUSE, NEW YORK
SITE REMEDIATION PROJECT

JULY 2006
OM&M INSPECTION
PARTIAL SITE PLAN



FILE NO. 4966.34124.045
SEPTEMBER 2006

